



# Bucket Mount Kit

## Titan® HD Series Riding Mower

Model No. 136-9045

### Installation Instructions

#### ⚠ WARNING

##### CALIFORNIA Proposition 65 Warning

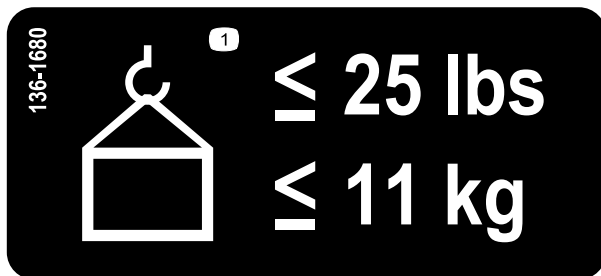
This product contains a chemical or chemicals known to the State of California to cause cancer, birth defects, or reproductive harm.

## Safety

### Safety and Instructional Decals



Safety decals and instructions are easily visible to the operator and are located near any area of potential danger. Replace any decal that is damaged or missing.



decal136-1680

136-1680

1. Maximum weight is 11 kg (25 lb)



# Installation

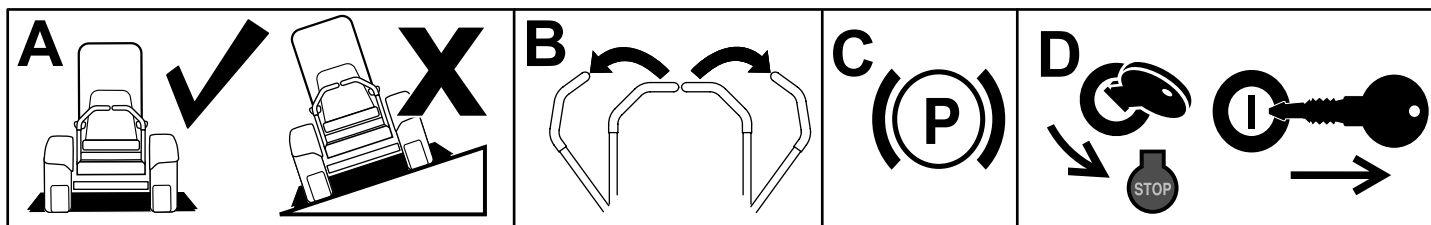
## Loose Parts

Use the chart below to verify that all parts have been shipped.

Description	Qty.	Use
No parts required	—	Prepare the machine.
Upper mount	1	Install the kit.
Main bracket	1	
Top bracket	1	
Lower support bracket	1	
Welded support bracket	1	
Carriage bolt (5/16 x 7/8 inch)	4	
Nut (5/16 inch)	3	
Knob	1	
Fist clamp	1	
Slotted screw	1	
Locknut	1	
Bolt (5/16 x 1 inch)	3	Mount the kit to the machine.
Nut (5/16 inch)—use only 4 for 2017 and older machines	6	
Carriage bolt (5/16 x 7/8 inch)—use only 1 for 2017 and older machines	4	
Inner support bracket—2018 and newer machines only	1	
Front-weight kit (sold seperately)	1	Install a front-weight kit (if needed).

## Preparing the Machine

1. Park the machine on a level surface.
2. Move the motion-control levers to the NEUTRAL-LOCK position.
3. Engage the parking brake.
4. Shut off the engine and remove the key.



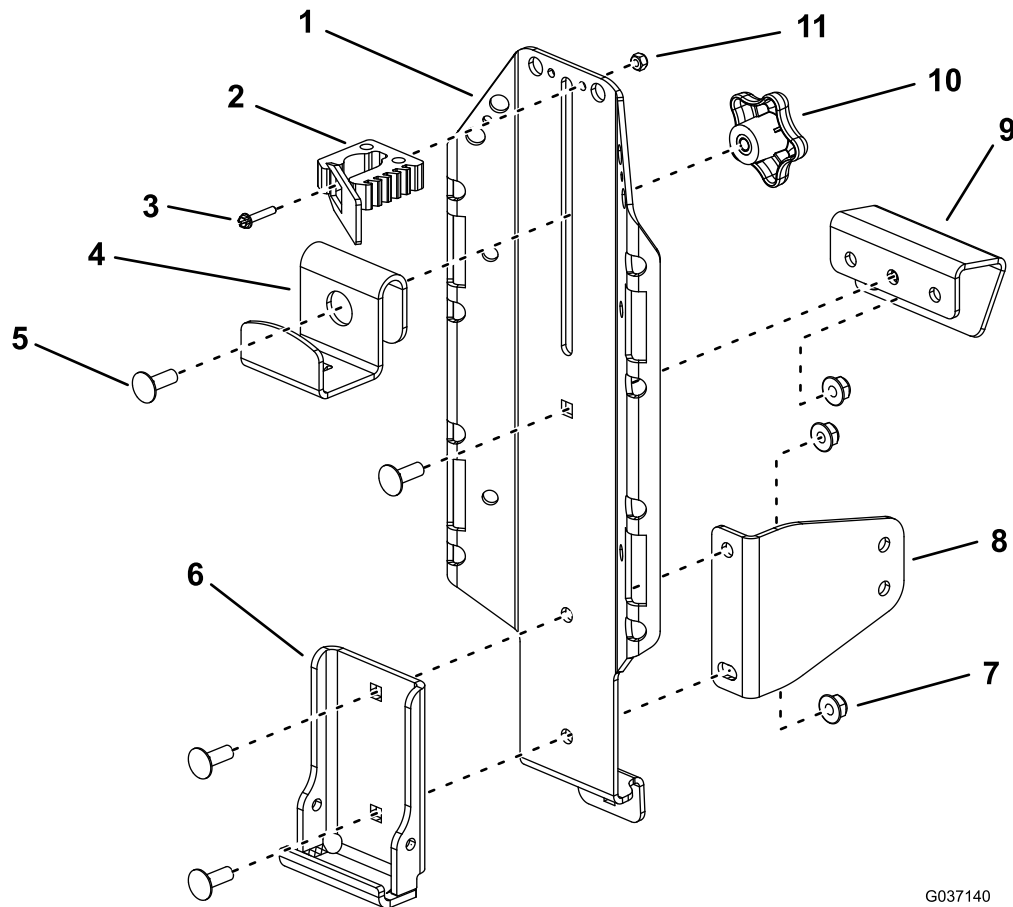
g037289  
g037289

Figure 1

# Assembling the Kit

Assemble the kit as shown in [Figure 2](#). Ensure to loosely install the upper mount to the main bracket; refer to [Figure 3](#) to determine which hole to use in the upper mount.

**Note:** Install the lower support bracket only if you are mounting the kit in front of the rear tires. Install the bracket so that the large face is oriented rearward on the machine; [Figure 2](#) or shows the bracket orientation for mounting the kit on the left side of the machine.



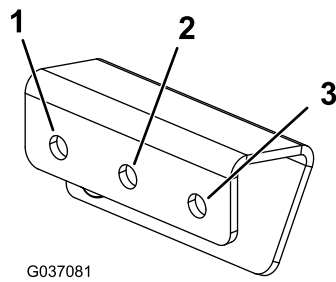
G037140

g037140

**Figure 2**

- |                          |                                    |                                      |                  |
|--------------------------|------------------------------------|--------------------------------------|------------------|
| 1. Main bracket          | 4. Top bracket                     | 7. Nut (5/16 inch)                   | 10. Knob         |
| 2. Fist clamp (optional) | 5. Carriage bolt (5/16 x 7/8 inch) | 8. Lower support bracket (if needed) | 11. Locknut (#8) |
| 3. Slotted screw         | 6. Welded support bracket          | 9. Upper mount                       |                  |

**Note:** Mounting the fist clamp is optional. If mounting the fist clamp to the main bracket is inconvenient for mounting some accessories, you may alternatively mount it to a bucket (sold separately); drill a hole (5.1 mm or 0.2 inch diameter) into the bucket and mount the fist clamp to it using the slotted screw and locknut.



**Figure 3**

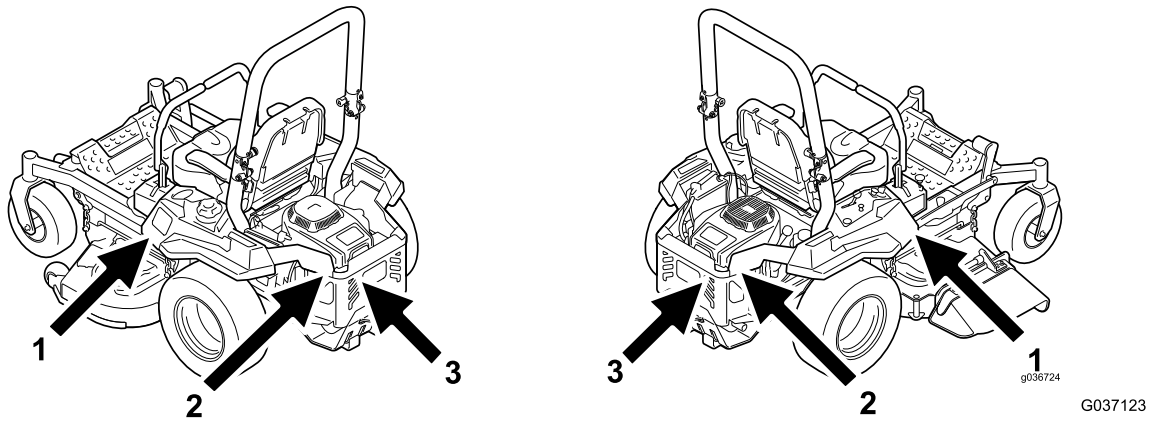
1. Use this hole if you are mounting the kit in front of the left, rear tire.
2. Use this hole if you are mounting the kit in any location behind the rear tires.
3. Use this hole if you are mounting the kit in front of the right, rear tire.

## Mounting the Kit to the Machine

### Mounting Locations

You can mount this kit in 6 locations on the machine ([Figure 4](#)). Refer to 1 of the following procedures to mount the kit in the desired location.

**Note:** For 1500 series machines, you can only mount the kit in the 2 locations in front of the rear tires.



**Figure 4**

1. In front of the rear tire
2. Side of the engine guard
3. Rear engine guard

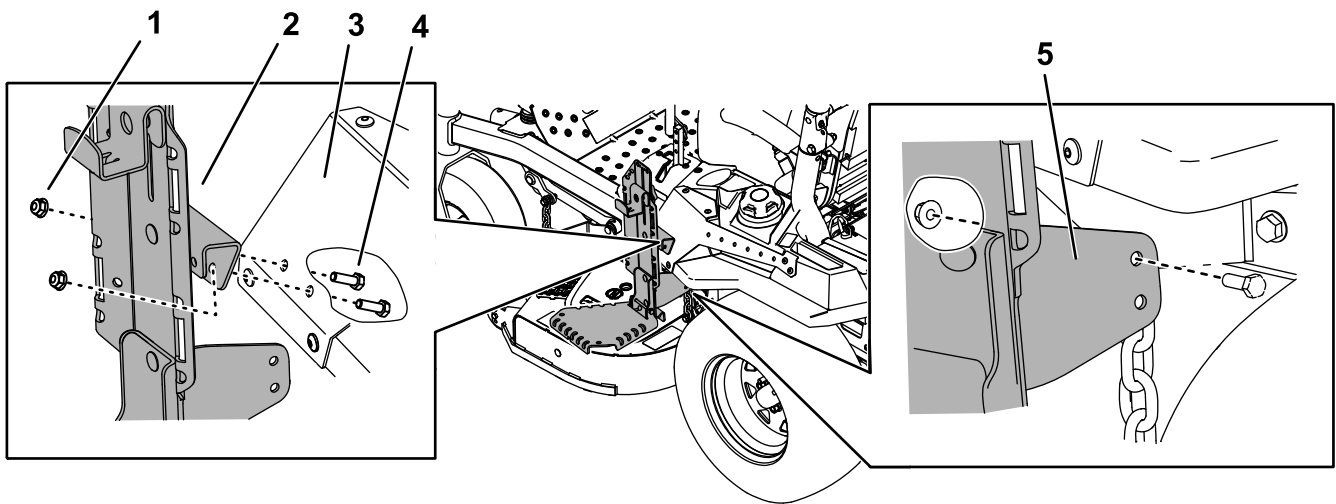
# Mounting the Kit in Front of the Rear Tires

## For 2017 and Older Machines

1. Secure the mount assembly to the console cover using 2 bolts (5/16 x 1 inch) and 2 nuts (5/16 inch) as shown in [Figure 5](#) or [Figure 6](#).
2. Tighten the fasteners securing the upper mount to the main bracket.
3. Secure the lower support bracket to the rear side of the bracket under the console cover using 1 bolt (5/16 x 1 inch) and 1 nut (5/16 inch) as shown in [Figure 5](#) or [Figure 6](#).

**Note:** You will not use the bottom hole in the main bracket or lower support bracket.

**Note:** Ensure that the assembly is vertical. If it hangs at an angle, the lower support bracket may be installed incorrectly.

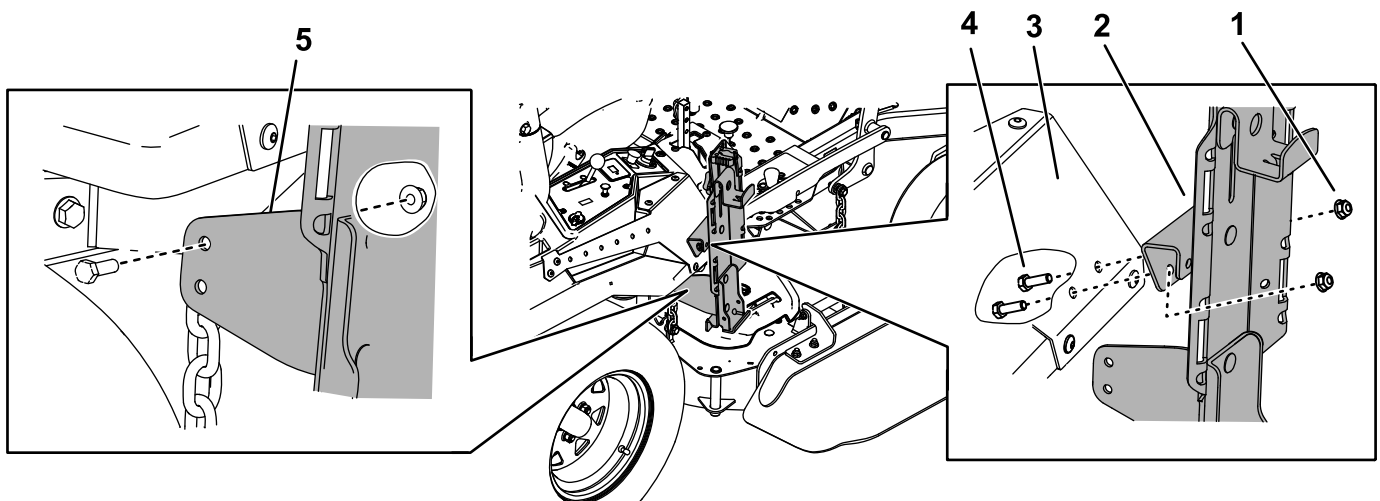


g213937

**Figure 5**

Mounting the kit to the left side of the machine

- |                    |                         |                          |
|--------------------|-------------------------|--------------------------|
| 1. Nut (5/16 inch) | 3. Console cover        | 5. Lower support bracket |
| 2. Mount assembly  | 4. Bolt (5/16 x 1 inch) |                          |



g213522

**Figure 6**

Mounting the kit to the right side of the machine

- |                    |                         |                          |
|--------------------|-------------------------|--------------------------|
| 1. Nut (5/16 inch) | 3. Console cover        | 5. Lower support bracket |
| 2. Mount assembly  | 4. Bolt (5/16 x 1 inch) |                          |

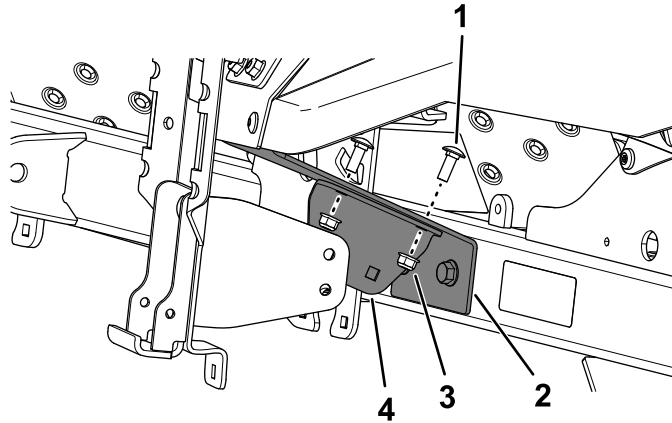
# Mounting the Kit in Front of the Rear Tires

## For 2018 and Newer Machines

1. Secure the mount assembly to the console cover using 2 bolts (5/16 x 1 inch) and 2 nuts (5/16 inch) as shown in [Figure 5](#) or [Figure 6](#).
2. Tighten the fasteners securing the upper mount to the main bracket.
3. Secure the inner support bracket to the pod support bracket using 2 carriage bolts (5/16 x 7/8 inch) and 2 nuts (5/16 inch) as shown in [Figure 7](#).

When installing the inner support bracket on the **left** side of the machine, orient the inner support bracket as shown in [Figure 8](#).

When installing the inner support bracket on the **right** side of the machine, orient the inner support bracket as shown in [Figure 9](#).

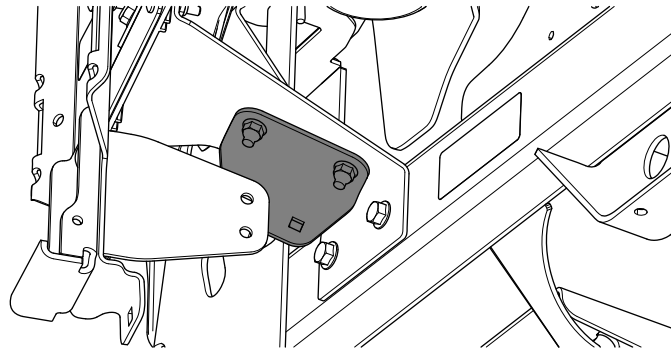


g225469

**Figure 7**

Mounting the kit to the left side of the machine

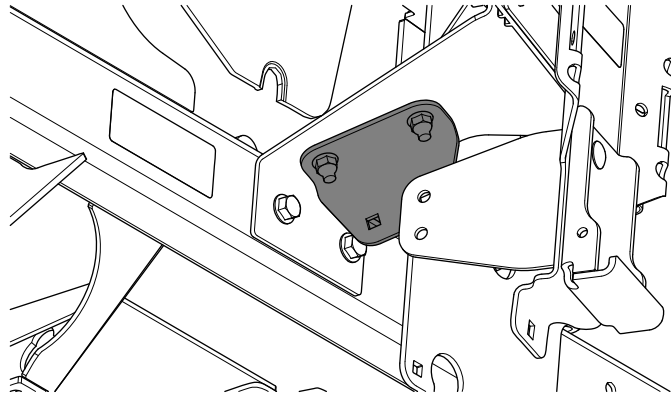
- |                                    |                          |
|------------------------------------|--------------------------|
| 1. Carriage bolt (5/16 x 7/8 inch) | 3. Nut (5/16 inch)       |
| 2. Pod support bracket             | 4. Inner support bracket |



g225470

**Figure 8**

Mounting the kit to the left side of the machine



g225471

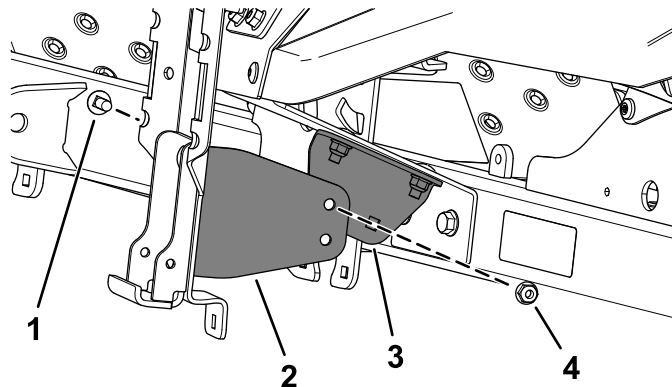
**Figure 9**

Mounting the kit to the right side of the machine

- 
4. Secure the lower support bracket to the inner support bracket under the console cover using 1 bolt (5/16 x 7/8 inch) and 1 nut (5/16 inch) as shown in [Figure 10](#).

**Note:** You will not use the bottom hole in the main bracket or lower support bracket.

**Note:** Ensure that the assembly is vertical. If it hangs at an angle, the lower support bracket may be installed incorrectly.



g225517

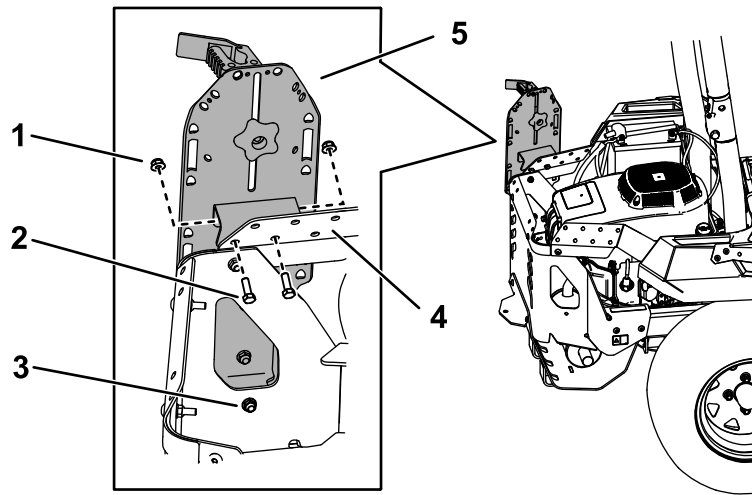
**Figure 10**

Mounting the kit to the left side of the machine

- |                                    |                          |
|------------------------------------|--------------------------|
| 1. Carriage bolt (5/16 x 7/8 inch) | 3. Inner support bracket |
| 2. Lower support bracket           | 4. Nut (5/16 inch)       |
-

## Mounting the Kit to the Side of the Engine Guard

1. Secure the mount assembly to the side upper guard using 2 bolts (5/16 x 1 inch) and 2 nuts (5/16 inch) as shown in [Figure 11](#) or [Figure 12](#).
2. Tighten the fasteners securing the upper mount to the main bracket.
3. Secure the bottom of the main bracket to the engine guard using 1 carriage bolt (5/16 x 7/8 inch) and 1 nut (5/16 inch) as shown in [Figure 11](#) or [Figure 12](#).

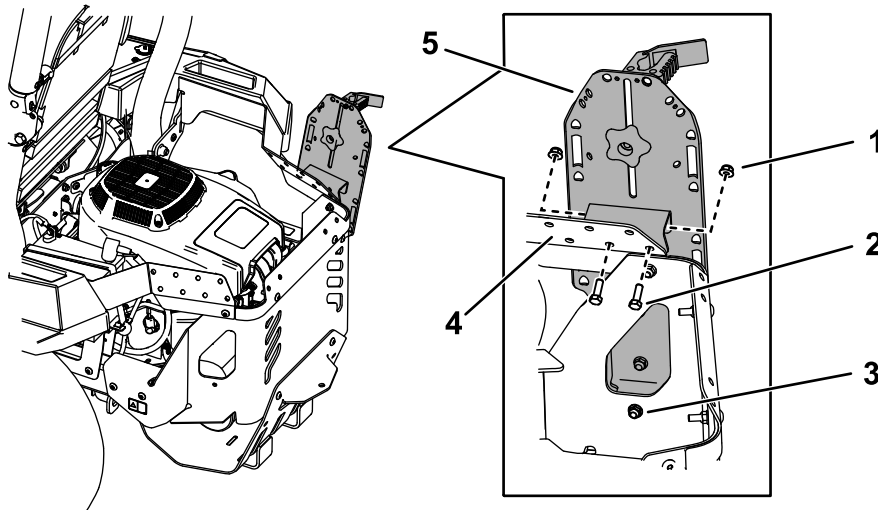


g213523

**Figure 11**

Mounting the kit to the left side of the engine guard

- |  |                     |
|--|---------------------|
| 1. Nut (5/16 inch)                                     | 4. Side upper guard |
| 2. Bolt (5/16 x 1 inch)                                | 5. Mount assembly   |
| 3. Carriage bolt (5/16 x 7/8 inch) and nut (5/16 inch) |                     |



g213524

**Figure 12**

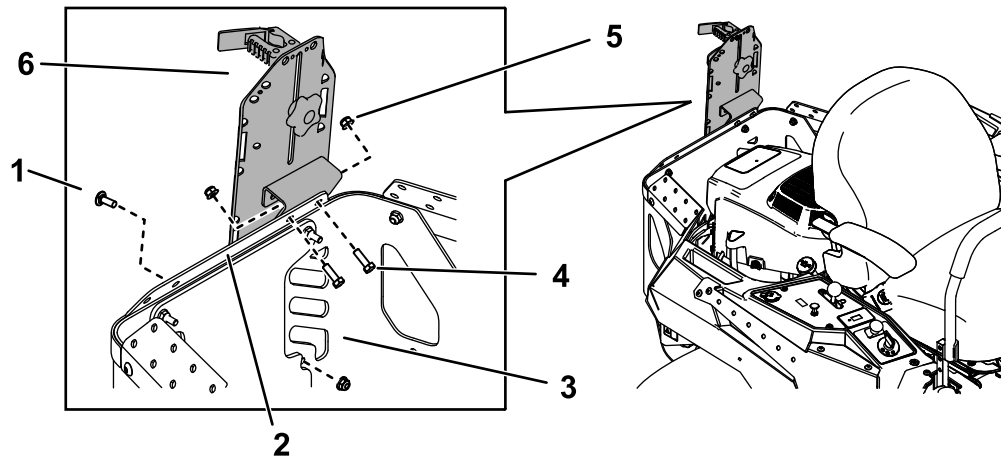
Mounting the kit to the right side of the engine guard

- |  |                     |
|--|---------------------|
| 1. Nut (5/16 inch)                                     | 4. Side upper guard |
| 2. Bolt (5/16 x 1 inch)                                | 5. Mount assembly   |
| 3. Carriage bolt (5/16 x 7/8 inch) and nut (5/16 inch) |                     |



## Mounting the Kit to the Rear Engine Guard

1. Secure the mount assembly to the rear upper guard using 2 bolts (5/16 x 1 inch) and 2 nuts (5/16 inch) as shown in [Figure 13](#) or [Figure 14](#).
2. Tighten the fasteners securing the upper mount to the main bracket.
3. Secure the bottom of the main bracket to the rear engine guard using 1 carriage bolt (5/16 x 7/8 inch) and 1 nut (5/16 inch) as shown in [Figure 13](#) or [Figure 14](#).

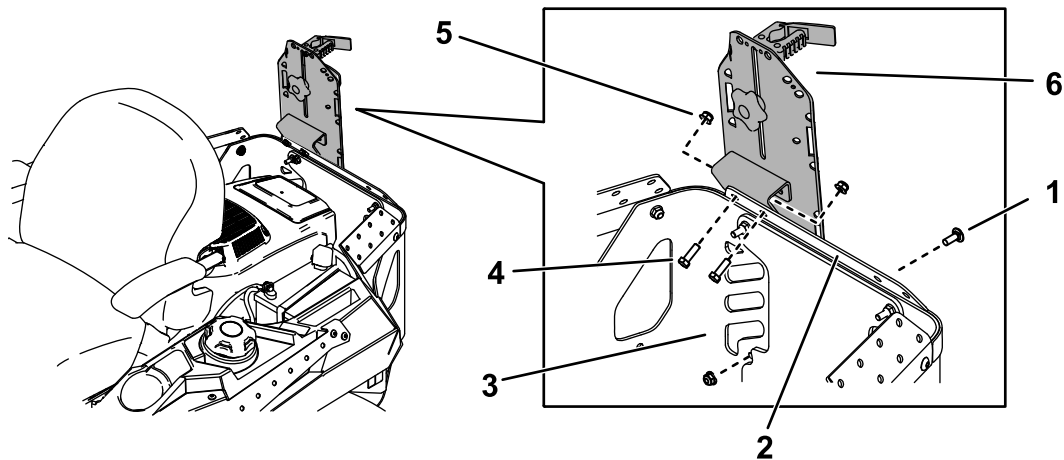


g213525

**Figure 13**

Mounting the kit to the left side of the rear engine guard (roll bar not shown for clarity)

- |                                    |                         |                    |
|------------------------------------|-------------------------|--------------------|
| 1. Carriage bolt (5/16 x 7/8 inch) | 3. Rear engine guard    | 5. Nut (5/16 inch) |
| 2. Rear upper guard                | 4. Bolt (5/16 x 1 inch) | 6. Mount assembly  |



g213526

**Figure 14**

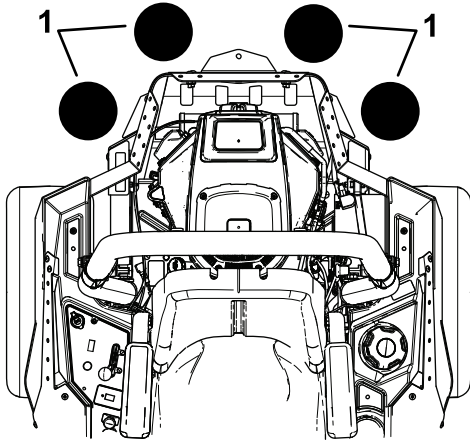
Mounting the kit to the right side of the rear engine guard (roll bar not shown for clarity)

- |                                    |                         |                    |
|------------------------------------|-------------------------|--------------------|
| 1. Carriage bolt (5/16 x 7/8 inch) | 3. Rear engine guard    | 5. Nut (5/16 inch) |
| 2. Rear upper guard                | 4. Bolt (5/16 x 1 inch) | 6. Mount assembly  |

# Installing a Front-Weight Kit

## For Machines with 2 or More Accessory-Mount Kits

If 2 or more accessory-mount kits (i.e., bucket kit or universal mount kit) are added to any of the 4 locations shown in [Figure 15](#), add a front-weight kit. Contact your Authorized Service Dealer for the front-weight kit.



**Figure 15**

g037417

1. Add a front-weight kit when 2 or more accessory-mount kits are installed at these positions.

## Operation

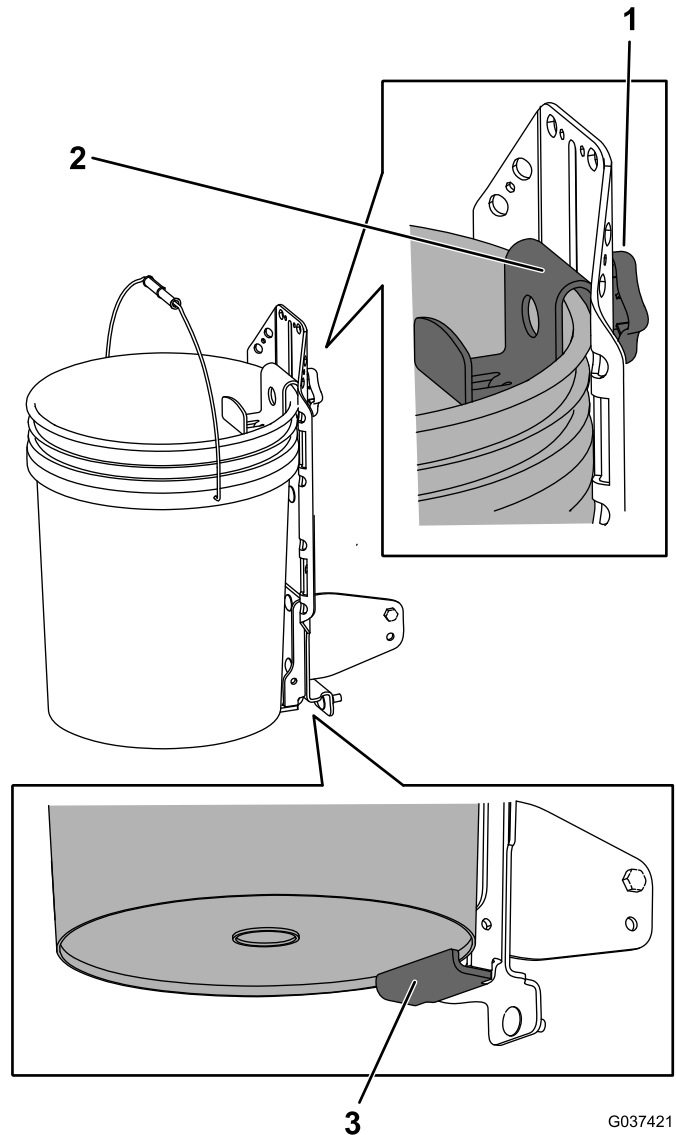
### Mounting Attachments

Use only Toro-approved attachments and accessories. The maximum capacity is 11.3 kg (25 lb).

Use the holes in the mounting brackets to secure attachments or accessories.

## Mounting a Bucket

1. Loosen the knob and raise the top bracket. Tighten the knob to hold it in place ([Figure 16](#)).
2. Place the bottom lip of the bucket over the bottom ledge of the welded support bracket ([Figure 16](#)).
3. Loosen the knob and lower the top bracket as far as possible over the rim of the bucket. Tighten the knob ([Figure 16](#)).



G037421

g037421

**Figure 16**

Fist clamp not shown

1. Knob
2. Top bracket over the rim of the bucket
3. Bottom ledge of the support bracket

**Notes:**



**Count on it.**