



# DH 210 Lawn Tractor

Model No. 74585—Serial No. 313000001 and Up

Model No. 74596—Serial No. 313000001 and Up

Form No. 3377-248 Rev B

## Setup Instructions

### Loose Parts

Use the chart below to verify that all parts have been shipped.

Procedure	Description	Qty.	Use
<b>1</b>	Steering wheel	1	Install the steering wheel.
	Roll pin	1	
	Spacer	1	
	Cap	1	
<b>2</b>	Seat	1	Install the seat.
	Bolts	2	
	Adjusting knob	2	
	Spacers	2	
	Spring washers	2	
<b>3</b>	Collector cover	1	Assemble the grass collector.
	Cover frame	1	
	Handle	1	
	Spring washer	2	
	Handle screw	2	
	Screw	6	
	Steel washer	6	
	Rubber washer	12	
	Nut	6	
	Outer frame	1	
	Hinge pin	2	
	Snap ring	2	
	Grass collector dump lever	1	
	Grass collector dump lever screw	1	
<b>4</b>	No parts required	—	Check the oil level.
<b>5</b>	No parts required	—	Activate the battery.
<b>6</b>	No parts required	—	Fill the Fuel Tank.
<b>7</b>	No parts required	—	Check the tire pressure.
<b>8</b>	No parts required	—	Lubricate the machine.



# 1

## Installing the Steering Wheel

Parts needed for this procedure:

1	Steering wheel
1	Roll pin
1	Spacer
1	Cap

### Procedure

1. Position the front wheels straight ahead.
2. Install the plastic spacer over the steering wheel shaft (smaller diameter first).
3. Slide the steering wheel over the shaft, aligning the holes on each side of the steering wheel with the holes in the spacer and with the holes in the shaft.
4. Drive the roll pin through the holes in the steering wheel, the plastic spacer, and the shaft with a hammer to secure the steering wheel.
5. Place the cap onto the steering wheel.

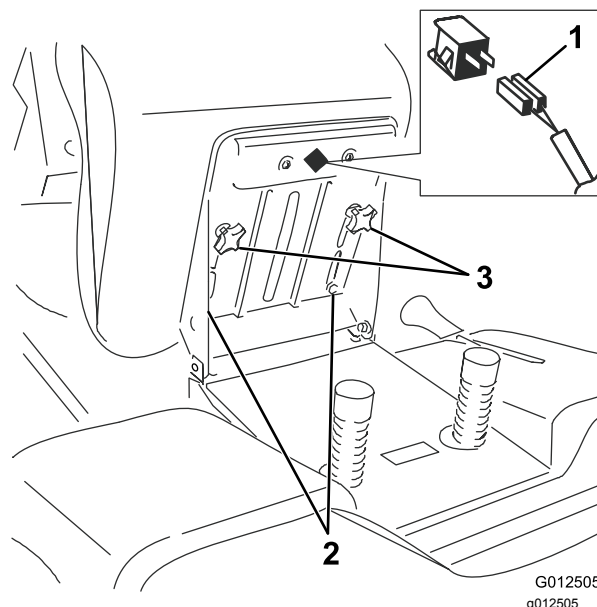


Figure 1

1. Safety switch
  2. Bolts and spacers
  3. Adjusting knobs and spring washers
- 
3. Install the 2 adjusting knobs and 2 spring washers (Figure 1).
  4. Ensure that the safety switch is connected to the seat (Figure 1).

# 2

## Installing the Seat

Parts needed for this procedure:

1	Seat
2	Bolts
2	Adjusting knob
2	Spacers
2	Spring washers

### Procedure

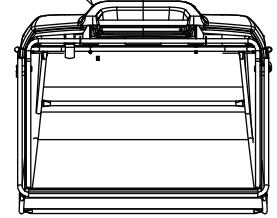
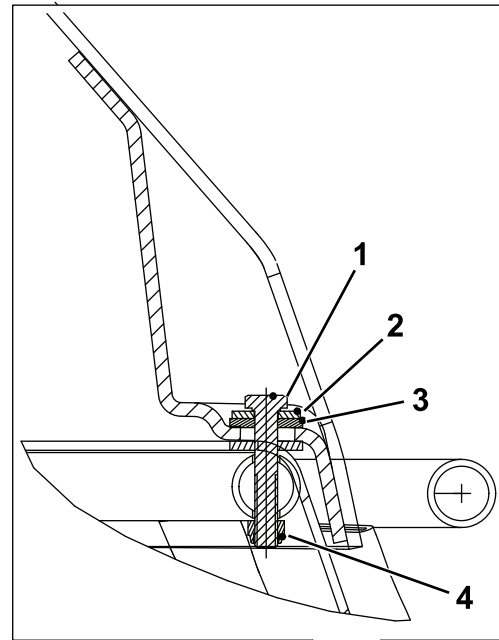
1. Remove the plastic cover from the seat and discard it.
2. Set the seat in place and secure it with the 2 bolts, and 2 spacers (Figure 1).

# 3

## Assembling the Grass Collector

### Parts needed for this procedure:

1	Collector cover
1	Cover frame
1	Handle
2	Spring washer
2	Handle screw
6	Screw
6	Steel washer
12	Rubber washer
6	Nut
1	Outer frame
2	Hinge pin
2	Snap ring
1	Grass collector dump lever
1	Grass collector dump lever screw



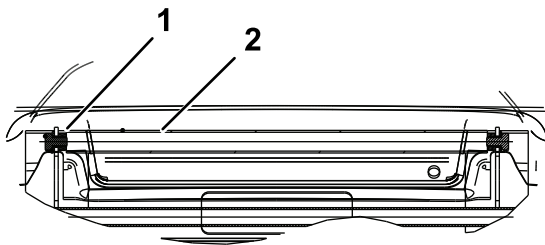
G018122  
g018122

**Figure 3**

Cross-sectional view shown

## Procedure

1. Align the collector frame with the collector cover.
2. Insert the handle into the handle holes in the collector cover (Figure 2).



G018121  
g018121

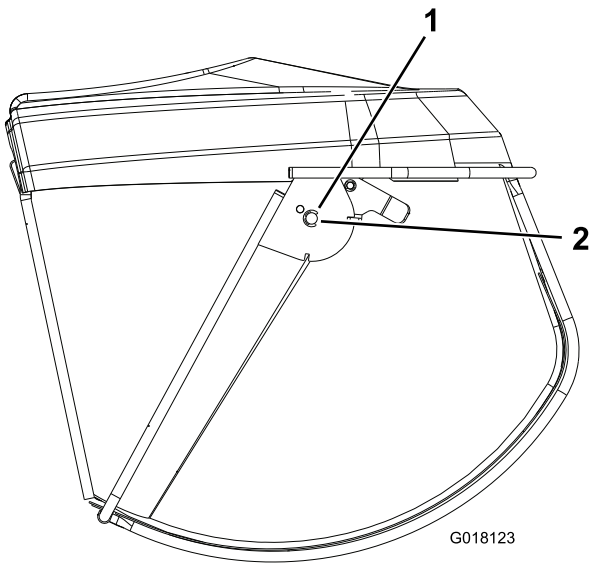
**Figure 2**

Cross-sectional view shown

1. Handle
2. Fasteners

3. Install a spring washer and a screw on each end of the handle, but do not tighten the screws.
4. Starting from the front and moving rearward, secure the collector cover to the frame at 6 locations using a screw, 1 steel washer, 2 rubber washers, and a nut at each location (Figure 3).

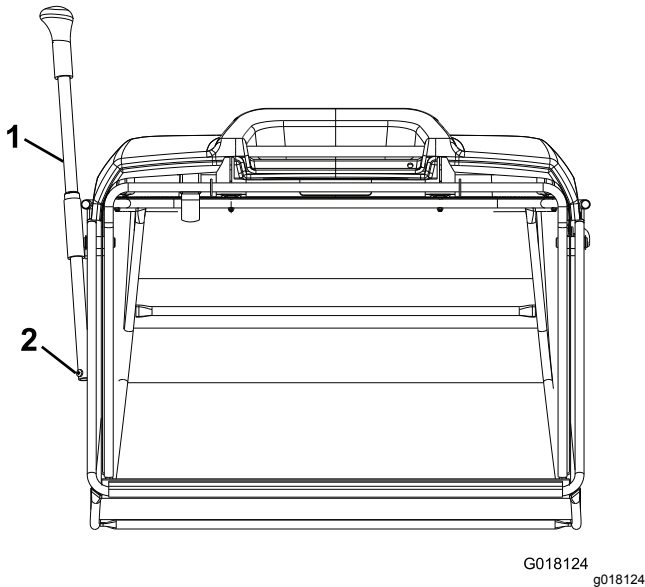
1. Screw
2. Steel washer
3. Rubber washer (2)
4. Nut
5. Tighten the handle screws that you loosely installed in step 3.
6. Assemble the outer frame to the collector frame by inserting a hinge pin (from loose parts) through the holes on each side from inside the collector (Figure 4).



**Figure 4**

1. Snap ring                      2. Hinge pin

7. Secure a hinge pin on each side of the collector (on the outside of the collector), with a snap ring installed into the groove on the pin (Figure 4).
8. Slide the handle arm assembly into position, and secure at the bottom of the grass collector dump lever with a screw.



**Figure 5**

1. Grass collector dump lever    2. Screw

**Note:** You may need to adjust the switch activation plate so that the switch operates properly.

## 4

### Checking the Oil Level

**No Parts Required**

#### Procedure

It may be necessary to add oil to the machine before first operation. Refer to the *Operator's Manual* for oil type, viscosity, and crankcase capacity. Add only enough oil to raise the level to the Full mark on the dipstick.

## 5

### Activating the Battery

**No Parts Required**

#### Procedure

1. Remove the battery from the machine; refer to the *Operator's Manual*.
2. Remove the filler caps from the top of the battery.

#### **⚠ DANGER**

**Battery electrolyte contains sulfuric acid, which is fatal if consumed and can severely burn you.**

- **Do not drink electrolyte.**
- **Avoid contact with skin, eyes, or clothing.**
- **Wear safety glasses to shield your eyes and rubber gloves to protect your hands.**
- **Fill the battery where clean water is available for flushing the skin.**
- **Follow all instructions and comply with all safety messages on the electrolyte container.**

3. Slowly pour electrolyte into each cell until the level is up to the lower part of the tube.
4. Leave the filler caps off, and connect a 3 to 4 A battery charger to the battery posts.
5. Charge the battery at a rate of 2 A or less for at least 24 hours (12 volts).

**Important:** Use only a battery charger set to 12 volts to charge the battery.

**Important:** Do not start the engine with a battery booster (jump starter) pack. Jump-starting the engine with a battery booster pack may damage electronic components of the machine.

### **⚠ WARNING**

Charging the battery produces gasses that can explode.

Never smoke near the battery, and keep sparks and flames away from the battery.

6. Install the filler caps after the battery is fully charged.
7. Install the battery in the chassis; refer to the *Operator's Manual*.

## **6**

### **Filling the Fuel Tank**

No Parts Required

#### **Procedure**

Add fuel to the fuel tank; refer to the *Operator's Manual*.

## **7**

### **Checking the Tire Pressure**

No Parts Required

#### **Procedure**

Check front and rear tires for proper inflation; refer to the *Operator's Manual* for the recommended inflation pressure.

## **8**

### **Lubricating the Machine**

No Parts Required

#### **Procedure**

Ensure that all of the necessary points on the machine are lubricated; refer to the *Operator's Manual*.

## **9**

### **Checking the Safety System**

No Parts Required

#### **Procedure**

Refer to the *Operator's Manual*.

**Notes:**

**Notes:**



**Count on it.**