



Count on it.

Parts Catalog

**MK3 200mm (8in) 4-Blade
Left-Hand Helix
Cutting Unit**

Model No. 02805—Serial No. 40000000 and Up



Ordering Replacement Parts

To order replacement parts, please supply the part number, the quantity, and the description of each part desired.

Understanding Reference Numbers

Each identified part in an illustration has a reference number. The reference number for a part also appears in the parts list, along with other information about the part.

This catalog uses two special reference number formats, one to indicate parts in a service assembly and another to indicate the quantity of a given part in an illustration.

Service Assembly Reference Numbers

Parts in service assemblies have reference numbers in the form a:b. The a represents the reference number of the entire service assembly and the b represents a sequential number unique to each part within the service assembly.

For example, a wheel assembly might be identified by reference number 6, the tire by 6:1, the valve by 6:2, and the wheel by 6:3. When you order the assembly identified by reference number 6, you receive all parts identified by reference numbers 6:1, 6:2, and 6:3. However, you may also order any part individually. Reference numbers of this type appear in illustration and in parts lists.

Reference Numbers Indicating Quantity

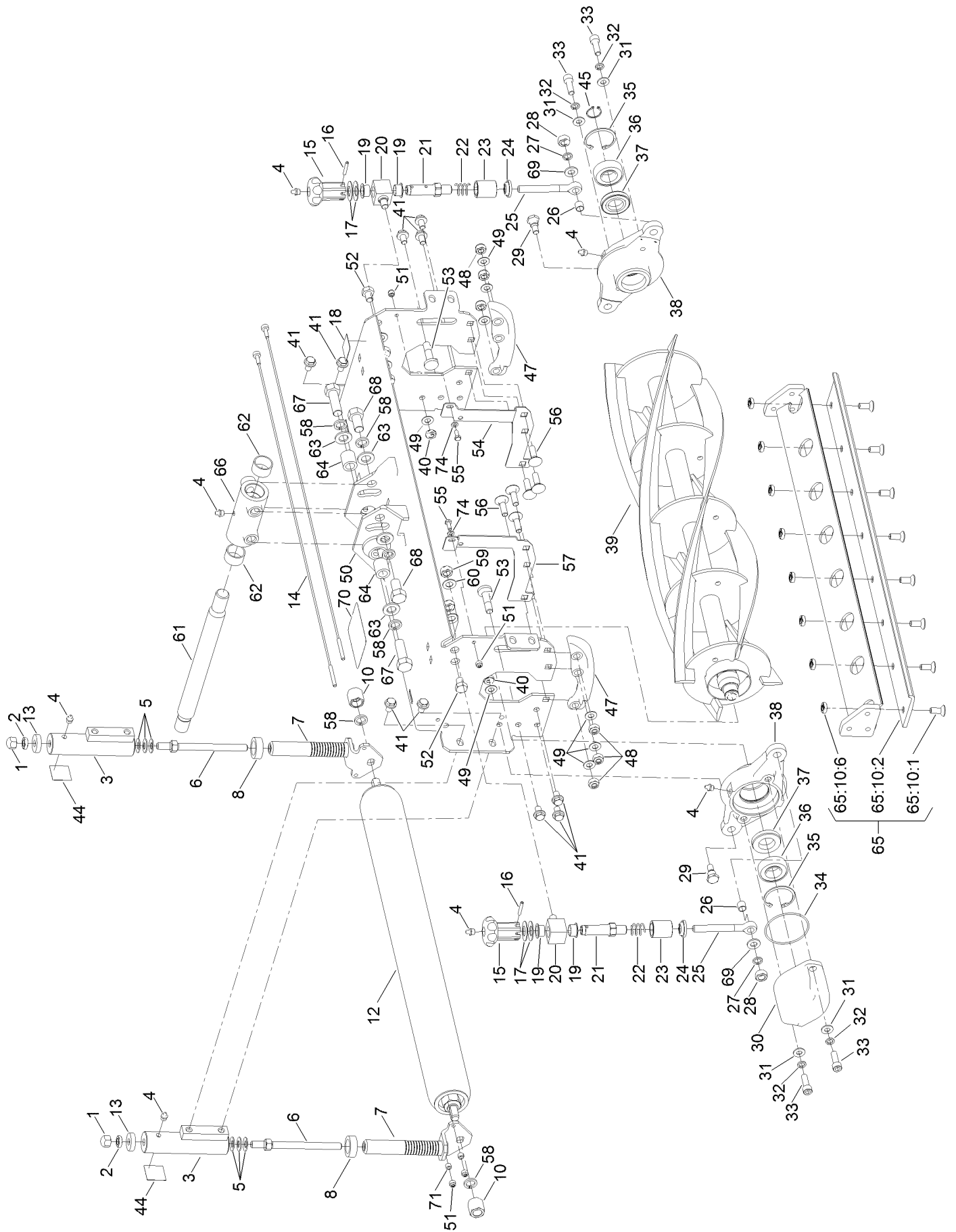
In an illustration, if a reference number indicates more than one part, the reference number has the form nX y. The n represents the quantity of the part, the X is the multiplication symbol, and the y represents the reference number.

For example, in an illustration, the reference number 2X 37 means that two of the parts identified by reference number 37 are indicated.

Contents

Left-Hand Helix Cutting Unit Assembly 4
Attachments and Accessories 6

Left-Hand Helix Cutting Unit Assembly



Left-Hand Helix Cutting Unit Assembly (continued)

<i>Ref.</i>	<i>Part Number</i>	<i>Qty.</i>	<i>Description</i>	<i>Ref.</i>	<i>Part Number</i>	<i>Qty.</i>	<i>Description</i>
1	ZNK1L000U	2	Nut-Dome	37	63-07-038	2	Seal-Lip, Single
2	ZNL1L000U	2	Nut-Hex	38	876007W	2	Casting-Bearing
3	876064W	2	Roller-Mounting	39	134-0497	1	Reel-8In, 4 Blade (LH Helix)
4	10-11-017	7	Fitting-Straight	40	ZNB1J000U	2	Nut
5	876099	6	Washer-Spring	41	63-11-019	10	Screw-HHF
6	63-01-960	2	Stud-Roller, Adjusting	44	63-13-039	2	Decal
7	111-9450	2	Shaft-Adjuster, Roller	45	40-07-017	1	Ring-Retaining, Clip
8	63-02-123	2	Spacer-Steel	47	876019W	2	Skid
10	876062	2	Roller-Nut	48	ZNN1J000U	6	Nut-Hex, NI
12	876006	1	Roller-Smooth	49	09479	8	Washer-Plain
12:99	111-2561	2	Fitting-Grease ●	50	876033C	1	Mainframe
12:99	876078	1	Kit-Bearing-Roller, Taper ●	51	09438	4	Nut-Nyloc
13	876098	2	Cap-Control, Pressure	52	ZDH1L016U	2	Screw-HH
14	63-07-072	2	Scraper-Wire	53	876069	2	Pin-Bearing
15	876013W	2	Handwheel	54	876052W	1	Bracket-Guard, LH
16	09730	2	Pin-Spiral	55	09362	2	Screw-HH
17	876034	4	Washer-Spring	56	09738	6	Bolt-Carriage
18	214053	2	Decal	57	876057W	1	Bracket-Guard, RH
19	876082	4	Bushing-Flange	58	HY4200	6	Washer-Spring
20	876047	2	Trunnion	59	ZNB1L000U	4	Nut-Other
21	876085	2	Adjuster-Sleeve	60	ZWP1L000U	4	Washer-Plain
22	876003	2	Spring-Compression	61	65-05-120	1	Pin
23	876053	2	Cage-Backlash	62	876065	2	Bushing-Sleeve
24	876054	2	Nut-Backlash, Plated	63	09491	4	Washer-Plain
25	876004	2	Bolt-Swing	64	922500	2	Bushing
26	876035	2	Bushing-Sleeve	65	876060W	1	Bottom Blade ASM
27	09599	2	Washer-Lock	65:10:1	09740	8	Screw-Sh
28	09454	2	Nut-Hex	65:10:2	111-3428	1	Blade-Bottom
29	876022	2	Pin-Pivot	65:10:6	ZNB1J000U	8	Nut
30	876009W	1	Counterweight	66	922115W	1	Casting-Pivot, Fixed
31	ZWQ1J000U	4	Washer-Plain	67	ZDH1P050U	2	Screw-HH
32	09480	4	Washer-Lock	68	09598	2	Screw-HH
33	ZCS1J030U	4	Screw-HSH	69	HY09485	2	Washer-Plain
34	876032	1	O-Ring	70	40-13-010	1	Decal-Warning
35	63-07-008	2	Ring-Retaining	71	340154	2	Bushing
36	63-07-036	2	Bearing-Ball	74	09472	2	Washer-Plain

● Not illustrated

Attachments and Accessories

For 02805 MK3 200mm (8in) 4-Blade Left-Hand Helix Cutting Unit

Product Name	Model/Part
Smooth Roller 200mm (8in) Cutting Unit.....	02822
Grooved Roller 200mm (8in) Cutting Unit	02823
Roller-Smooth Mk3 (Sealed for Life).....	111-1848
Reel 8in, 4 Blade, LH Helix	134-0497
Reel 8in, 6 Blade, LH Helix	134-0498
Reel 8in, 8 Blade, LH Helix	134-0499
Reel 8in, 10 Blade, LH Helix	134-0500
Height Of Cut Gauge Kit	63-01-760

Notes:



Count on it.