



Count on it.

Parts Catalog

QAS Nail Drag

**Sand Pro®/Infield Pro® 3040 and 5040
Traction Unit**

Model No. 08761—Serial No. 290000001 and Up



Ordering Replacement Parts

To order replacement parts, please supply the part number, the quantity, and the description of each part desired.

Understanding Reference Numbers

Each identified part in an illustration has a reference number. The reference number for a part also appears in the parts list, along with other information about the part.

This catalog uses two special reference number formats, one to indicate parts in a service assembly and another to indicate the quantity of a given part in an illustration.

Service Assembly Reference Numbers

Parts in service assemblies have reference numbers in the form a:b. The a represents the reference number of the entire service assembly and the b represents a sequential number unique to each part within the service assembly.

For example, a wheel assembly might be identified by reference number 6, the tire by 6:1, the valve by 6:2, and the wheel by 6:3. When you order the assembly identified by reference number 6, you receive all parts identified by reference numbers 6:1, 6:2, and 6:3. However, you may also order any part individually. Reference numbers of this type appear in illustration and in parts lists.

Reference Numbers Indicating Quantity

In an illustration, if a reference number indicates more than one part, the reference number has the form nX y. The n represents the quantity of the part, the X is the multiplication symbol, and the y represents the reference number.

For example, in an illustration, the reference number 2X 37 means that two of the parts identified by reference number 37 are indicated.

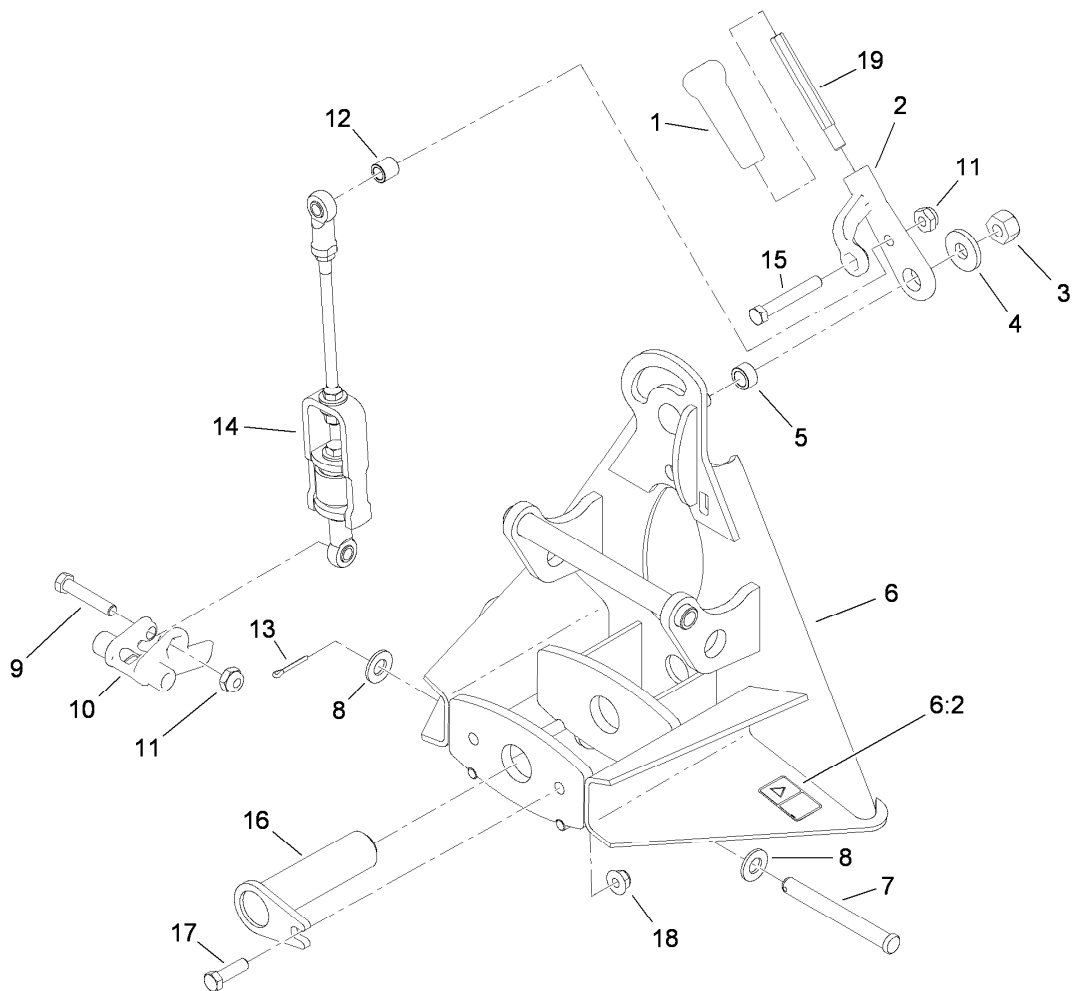
Contents

Adapter Assembly 4

Link Assembly No. 110-8105 5

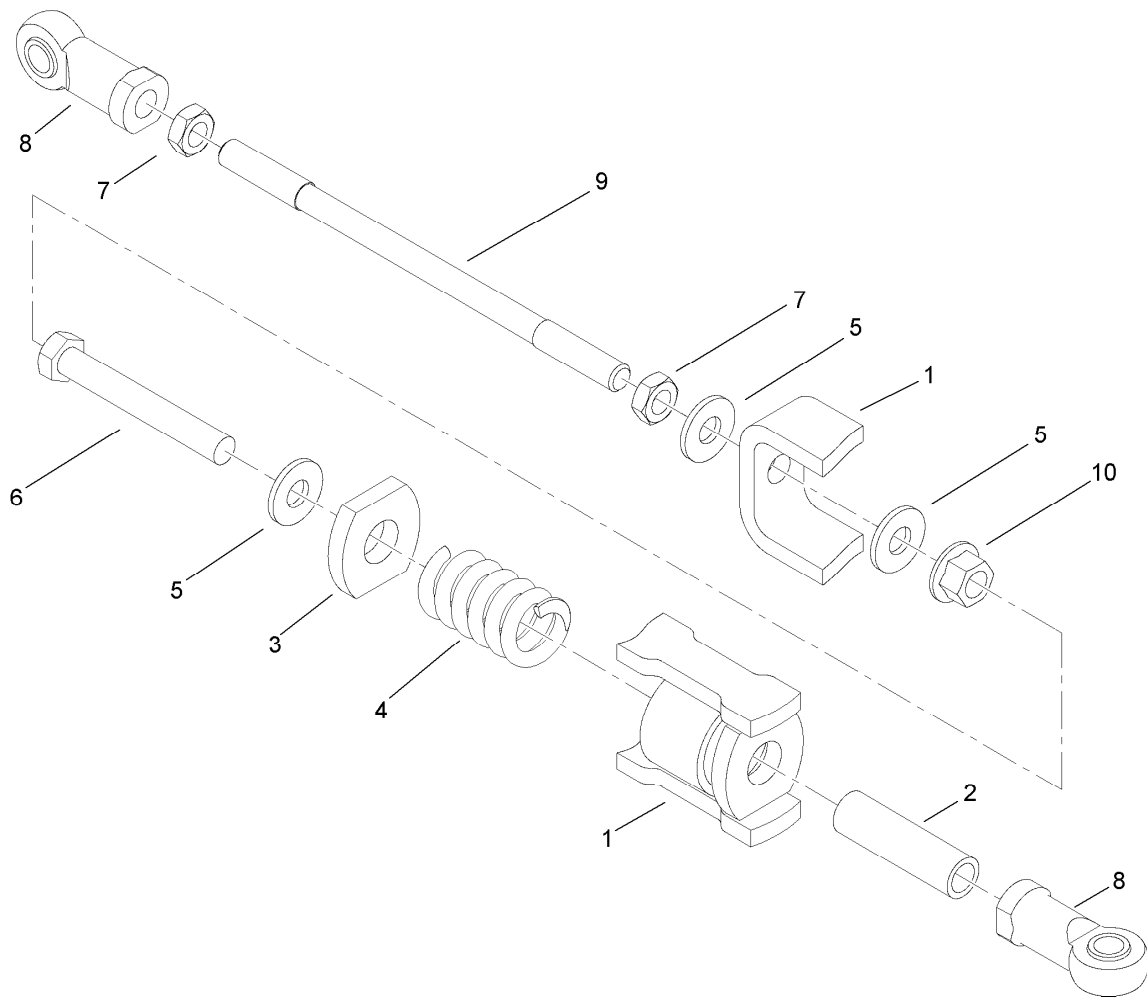
Nail Drag Assembly 6

Attachments and Accessories 7



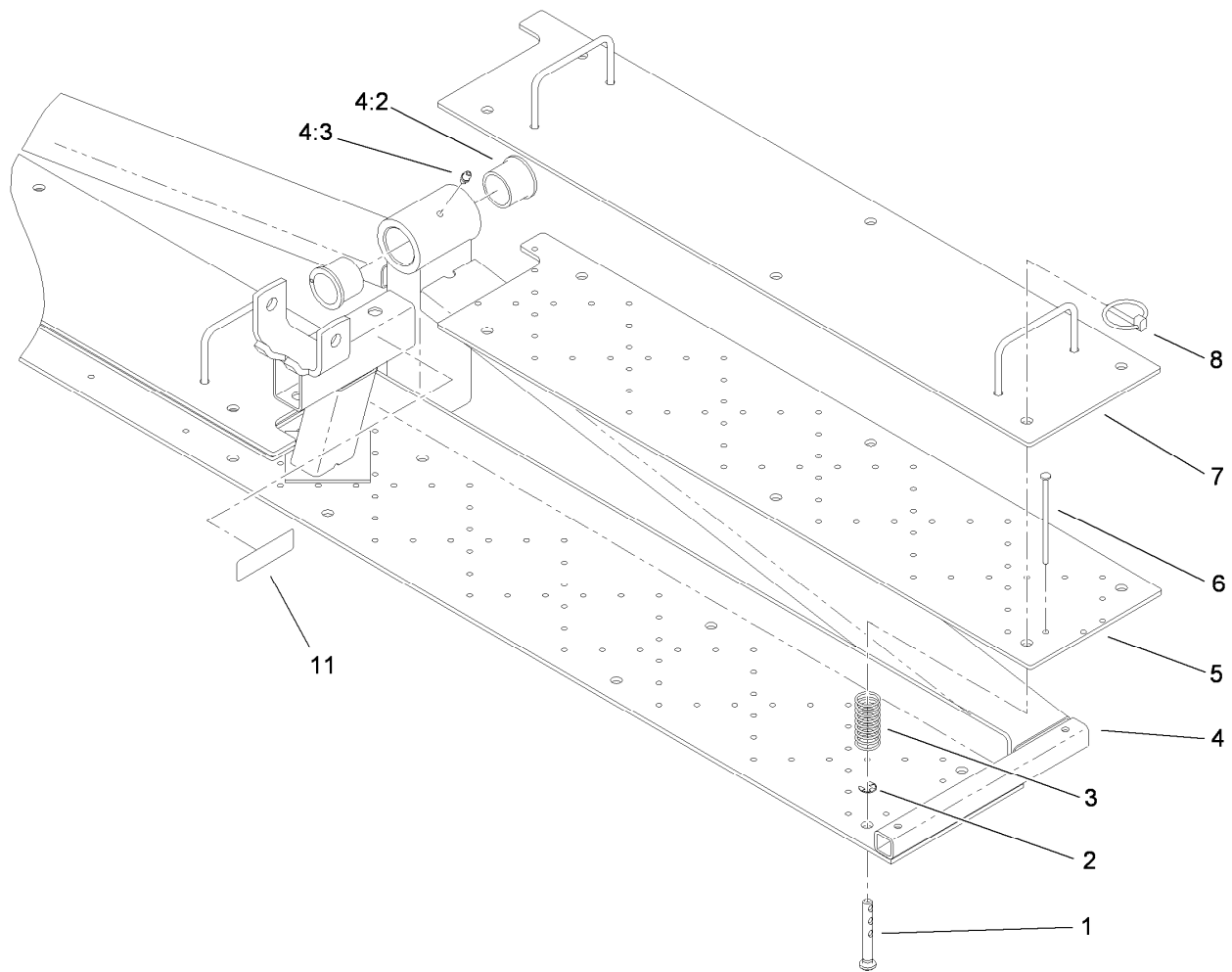
Adapter Assembly

Ref.	Part Number	Qty.	Description
1	99-7984	1	Knob-Soft Grip, Push-On
2	112-7695-03	1	Handle
3	3296-25	1	Nut-Lock, NI
4	92-2651	1	Washer
5	112-0038	1	Spacer
6	114-0621	1	Adapter ASM
6:2	106-5517	1	Decal-Warning
7	283-83	1	Pin-Clevis
8	3256-26	2	Washer-Flat
9	323-10	1	Screw-HH
10	112-7686	1	Latch
11	3296-44	2	Nut-Lock, NI
12	99-2058	1	Spacer-Support, Handle
13	3272-11	1	Pin-Cotter
14	110-8105	1	Link ASM
15	323-12	1	Screw-HH
16	114-0652	1	Pin-Lynch
17	323-7	1	Screw-HH
18	104-8301	1	Nut-HF, NI
19	114-4320	1	Rod-Handle



Link Assembly No. 110-8105

Ref.	Part Number	Qty.	Description
1	110-8111-01	1	Yoke ASM
2	110-8110	1	Spacer
3	110-8114	1	Washer
4	66-7230	1	Spring-Compression
5	3256-3	3	Washer-Flat
6	3211-12	1	Screw-HH
7	3220-3	2	Nut-HJ
8	92-7008	2	End-Rod, Female
9	110-8108	1	Rod-Link
10	32128-12	1	Nut-Lock, Flange



Nail Drag Assembly

Ref.	Part Number	Qty.	Description
1	112-7696	12	Pin-Clevis
2	32120-18	12	E-Ring
3	114-0677	12	Spring-Compression
4	114-0654	1	Frame ASM
4:2	104-0015	2	Bushing-Flange
4:3	302-5	1	Fitting-Grease
5	114-0656-03	2	Plate-Middle
6	114-0676	130	Nail
7	114-0657-03	2	Plate ASM
8	92-1298	12	Pin-Lynch
11	114-4391	1	Decal-Regulatory

Attachments and Accessories

For 08761 QAS Nail Drag Sand Pro/Infield Pro 3040 and 5040 Traction Unit

Product Name	Model/Part
Flex Groomer Kit.....	08762
Auto Drag Mat Kit	08763
Manual Drag Mat Kit	130-7852



Count on it.