

TORO®

PART NO. 98-0996

INSTALLATION INSTRUCTIONS

STEERING SHAFT KIT SAND PRO®



CAUTION

Before servicing or making adjustments to the machine, stop engine and remove key from the switch.

1. Remove roll pin securing steering wheel to upper steering shaft (Fig. 1). Remove steering wheel.

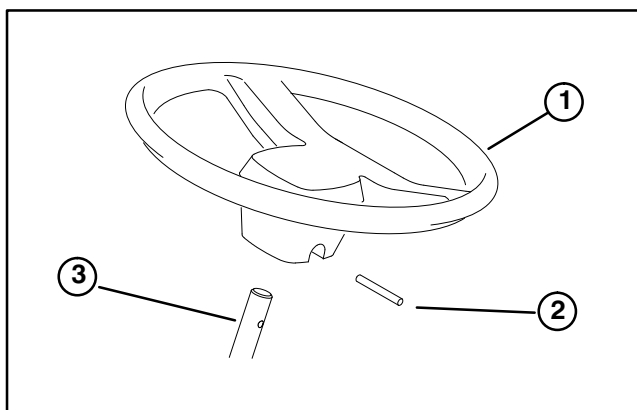


Figure 1

1. Steering wheel
2. Roll pin
3. Upper steering shaft

2. Using instructions for appropriate model, remove specified parts to gain access to steering components.

Sand Pro 2000 & 3000

- a. Remove capscrews securing dash panel to dash shroud and steering shaft assembly.

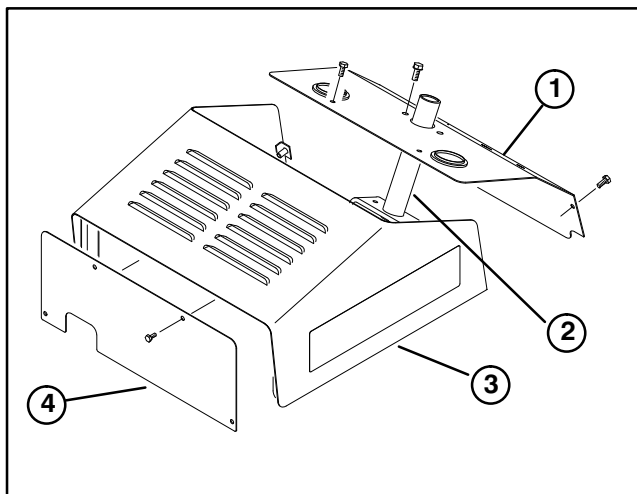


Figure 2

1. Dash panel
2. Steering shaft assembly
3. Dash shroud
4. Front panel

- b. Remove capscrews securing front panel to cooler shield and dash shroud. Remove front panel.

- c. Slide dash panel up steering shaft enough to remove dash shroud.

Sand Pro 2020 & 3020

- a. Remove capscrews securing dash panel to hood and steering shaft assembly.

- b. Remove capscrews securing hood to front shield.

- c. Slide dash panel up steering shaft enough to remove hood.

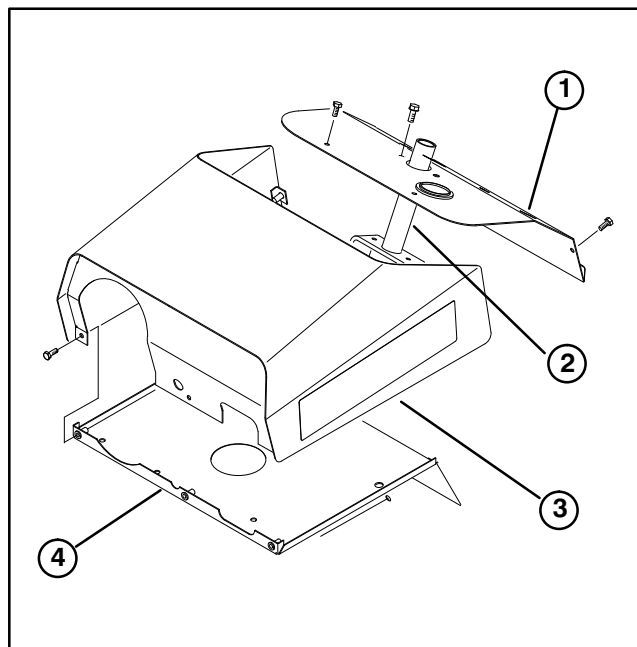


Figure 3

1. Dash panel
2. Steering shaft assembly
3. Hood
4. Front shield

Sand Pro 5000 & 5020

- a. Close fuel shut-off valve. Place drain pan under shut off-valve. Disconnect tank fuel line from valve allowing fuel to drain from fuel tank.

- b. Remove capscrew securing tilt steering lever to pin. Remove lever.

- c. Remove (4) capscrews and washers securing bottom of fuel tank to frame. Slide fuel tank and boot off steering shaft.

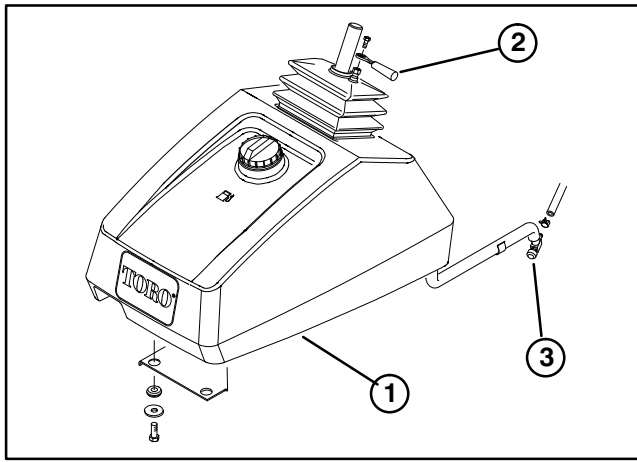


Figure 4

1. Fuel tank
2. Tilt steering lever
3. Fuel shut-off valve

d. On Sand Pro 5000 only – Remove capscrews, washers and nuts securing chain shield to frame (Fig. 5).

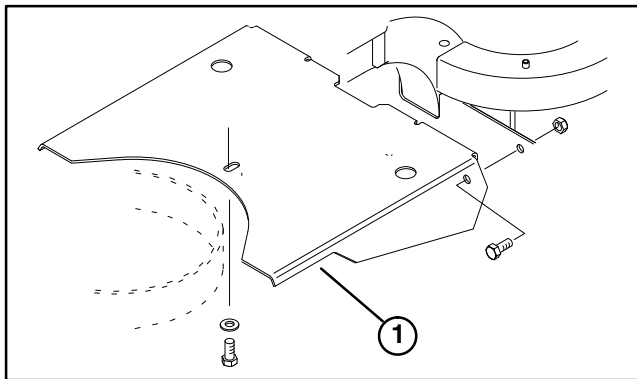


Figure 5

1. Chain shield

d. On Sand Pro 5020 only – Remove capscrews and nuts securing fuel tank bracket to frame.

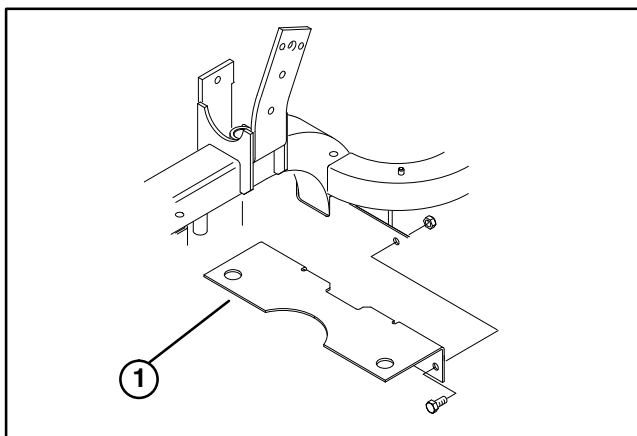


Figure 6

1. Fuel tank bracket

3. Loosen steering chain tension enough so it can be removed from steering shaft sprocket.

4. Remove roll pin securing top of lower steering shaft to universal joint (Fig. 7). Remove and discard sprocket and shaft.

5. Assemble new sprocket, drive pin, grease fitting and lower steering shaft (Fig. 7).

NOTE: All models use straight grease fitting, except Sand Pro 5020, which uses the 90° elbow grease fitting.

6. Install new assembly and secure to universal joint with previously removed roll pin.

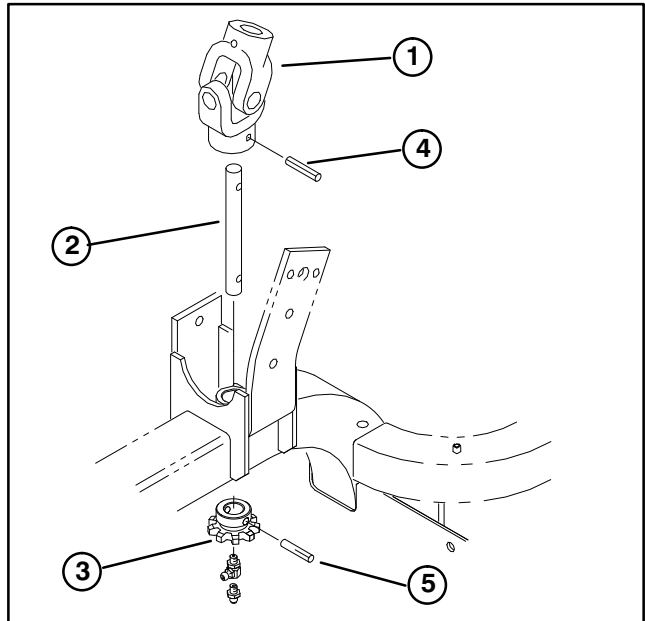


Figure 7

1. Universal joint
2. Lower steering shaft
3. Sprocket
4. Roll pin
5. Drive pin

7. On Sand Pro 5000 only – Using dimension shown in figure 8, locate, mark and drill a .50" dia. hole in chain shield. Install chain shield with fasteners previously removed.

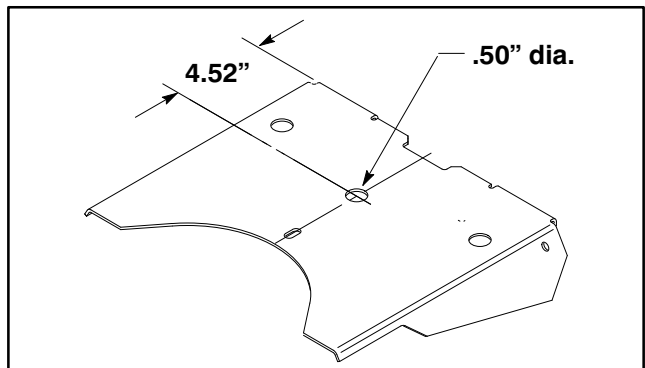


Figure 8

8. Re-assemble all components to machine and adjust chain tension.

9. Lubricate grease fitting with general purpose lithium base grease.

NOTE: We do not recommend lubricating the steering chain unless it becomes stiff because of rust. If the chain rusts, it may be lubricated lightly with a DRY-TYPE LUBRICANT.