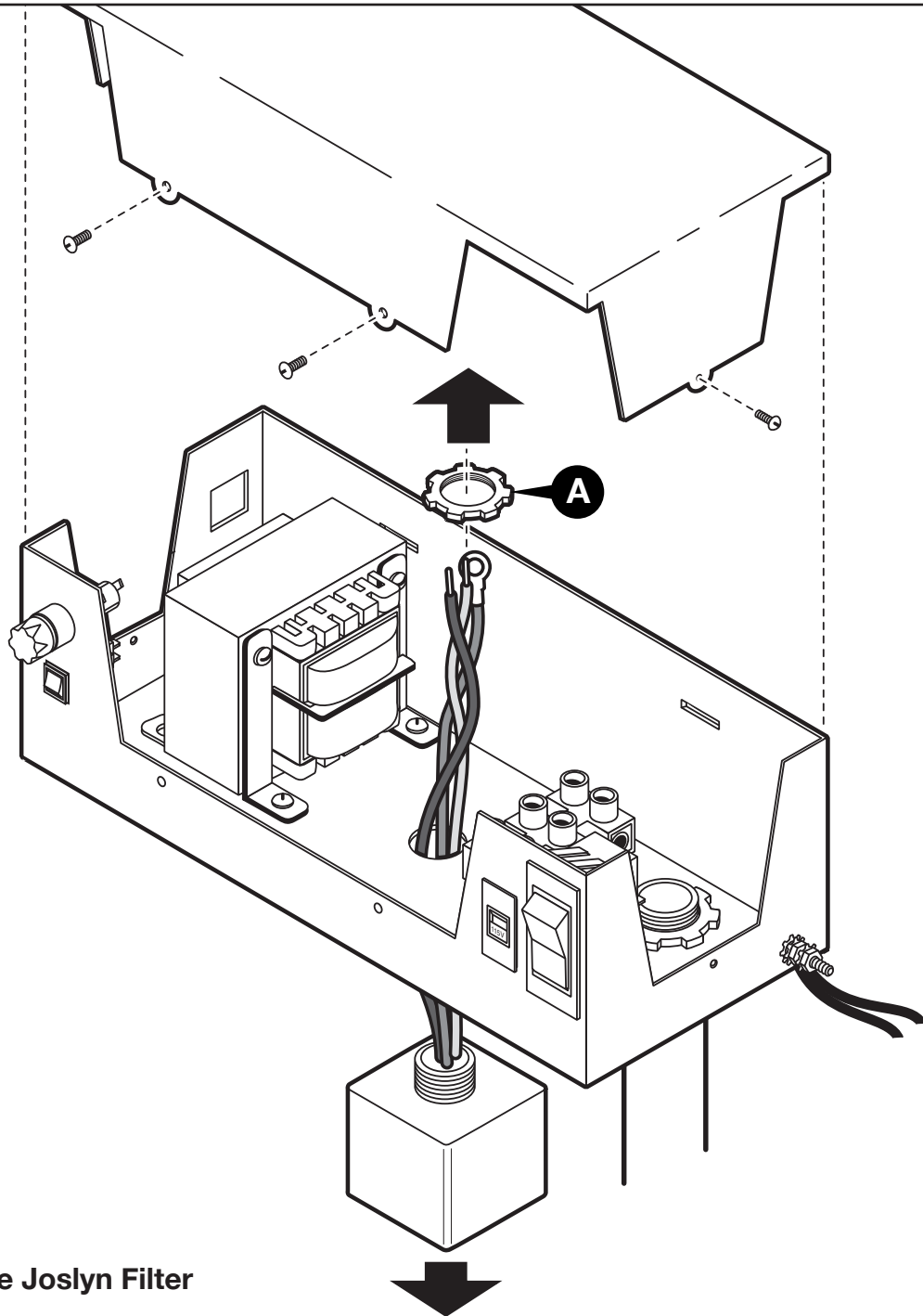
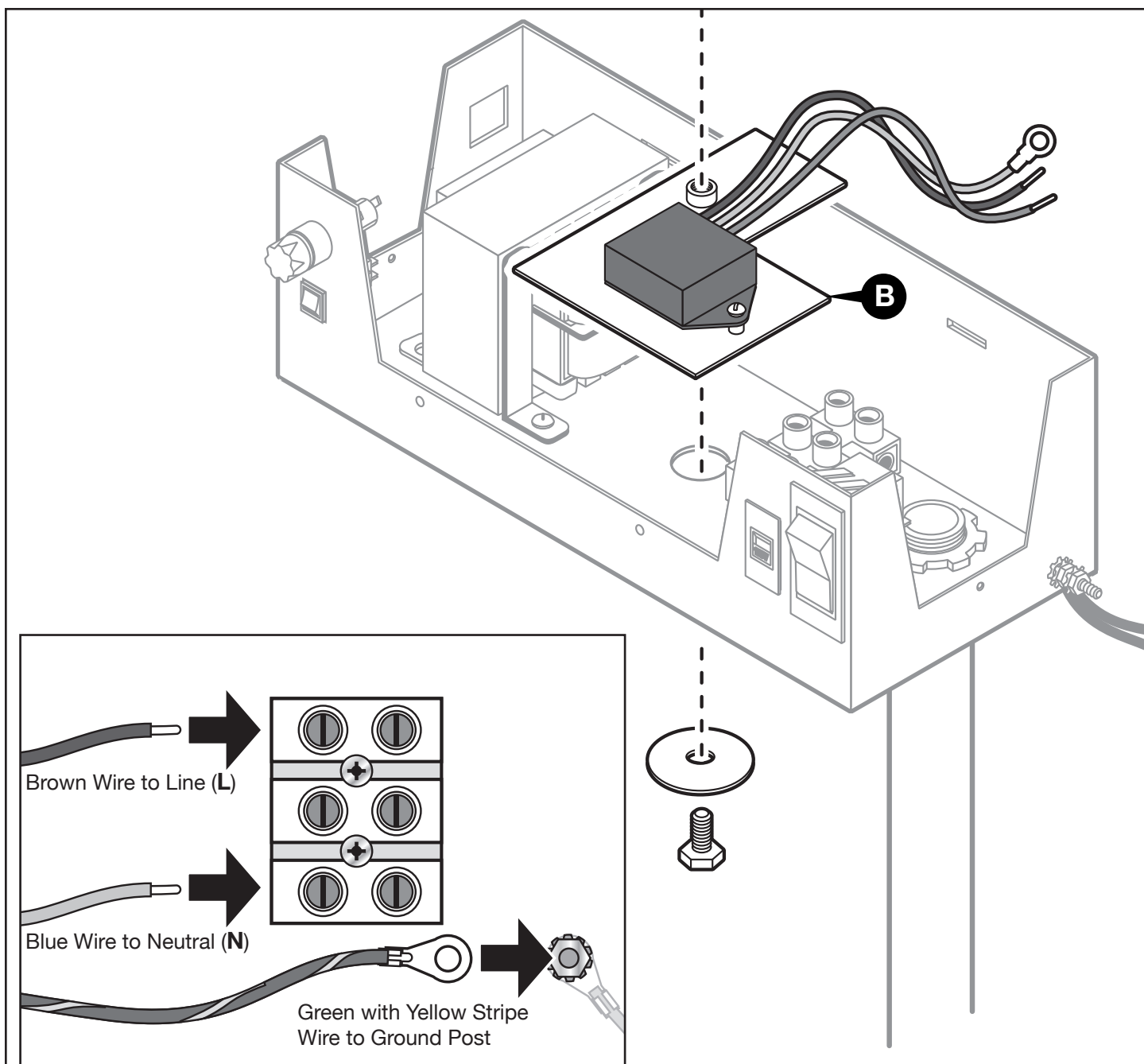


Transient Filter Kit for OSMAC Installation Instructions



Removing the Joslyn Filter

- Step 1 – Turn the power off to the satellite.
- Step 2 – Remove the satellite front door to access the power supply assembly.
- Step 1 – Remove the power supply cover to access the wiring.
- Step 3 – Disconnect all three Joslyn wires from the power supply terminals and ground post.
- Step 4 – Unscrew the retaining locknut (**A**) from the Joslyn to remove it from the power supply enclosure. See figure above.



Installing the Toro Transient Filter Kit

- Step 1 – Position the transient filter assembly (**B**) between the power transformer and the terminals as shown in the figure above.
- Step 2 – Secure the filter assembly with the provided washer and screw.
- Step 3 – Connect the brown transformer and filter wire into the Line (**L**) power terminal.
- Step 4 – Connect the blue transformer and filter wire into the Neutral (**N**) power terminal.
- Step 5 – Connect the green w/ yellow stripe ground wire into the power supply enclosure's ground post.
- Step 6 – Reinstall the power supply's cover and the satellite's front door.
- Step 7 – Turn the power on to the satellite and test for proper operation.