



SR-21S RECYCLER[®]
MOWER

Model No. 20494 – 8900001 & Up

Parts Catalog

ORDERING REPLACEMENT PARTS

To order replacement parts, please supply: the part number, the quantity, and the description of each part desired.

Contents

Description	Page	Description	Page
Housing Assembly	1	Engine Briggs & Stratton	
Engine & Blade Assembly	2	Model 12H802-1758-E1	6-14
Rear Axle Assembly	3	Toro Part Number Index	15-17
Handle Assembly	4	Note:	
Gear Case Assembly	5		

Accessories

Description	Model / Parts No.	Description	Model / Parts No.
Recycler Side discharge Kit	Model No. 59197		
Dethatcher Kit	Model No. 59131		
Recycler bagging Kit	Model No. 59195		

Part Description Abbreviations

Part descriptions in this catalog may include the following abbreviations.

Abbreviation	Meaning	Abbreviation	Meaning
AR	as required	HWHTF	hex washer head thread forming
ASM	assembly	INC	incorporated
CARR	carriage	LH	left hand
DEG	degrees	PH	pan head
FH	flat head	PPH	Phillips pan head
GA	gauge	PTO	power take off
HF	hex flange	RH	right hand
HFW	hex flange washer	SFH	slotted fillister head
HH	hex head	SH	square head
HHF	hex head flange	SHWH	slotted hex washer head
HHST	hex head self tapping	SPH	slotted pan head
HJ	hex jam	STD	standard
HOC	height-of-cut	TAP	self tapping
HS	hex socket	TH	truss head
HSBH	hex socket button head	TTH	Torx truss head
HSFH	hex socket flat head	WH	wing head
HSH	hex socket head		
HWH	hex washer head		

Important Format Explanations

This catalog uses special formats to convey information in illustrations and parts lists. Specifically, one format is used in conjunction with service assemblies and another with quantities associated with reference numbers.

Service Assemblies

Parts within service assemblies have reference numbers in the form $X:Y$. X is the reference number of the service assembly and Y is a sequential number unique to each part within the service assembly.

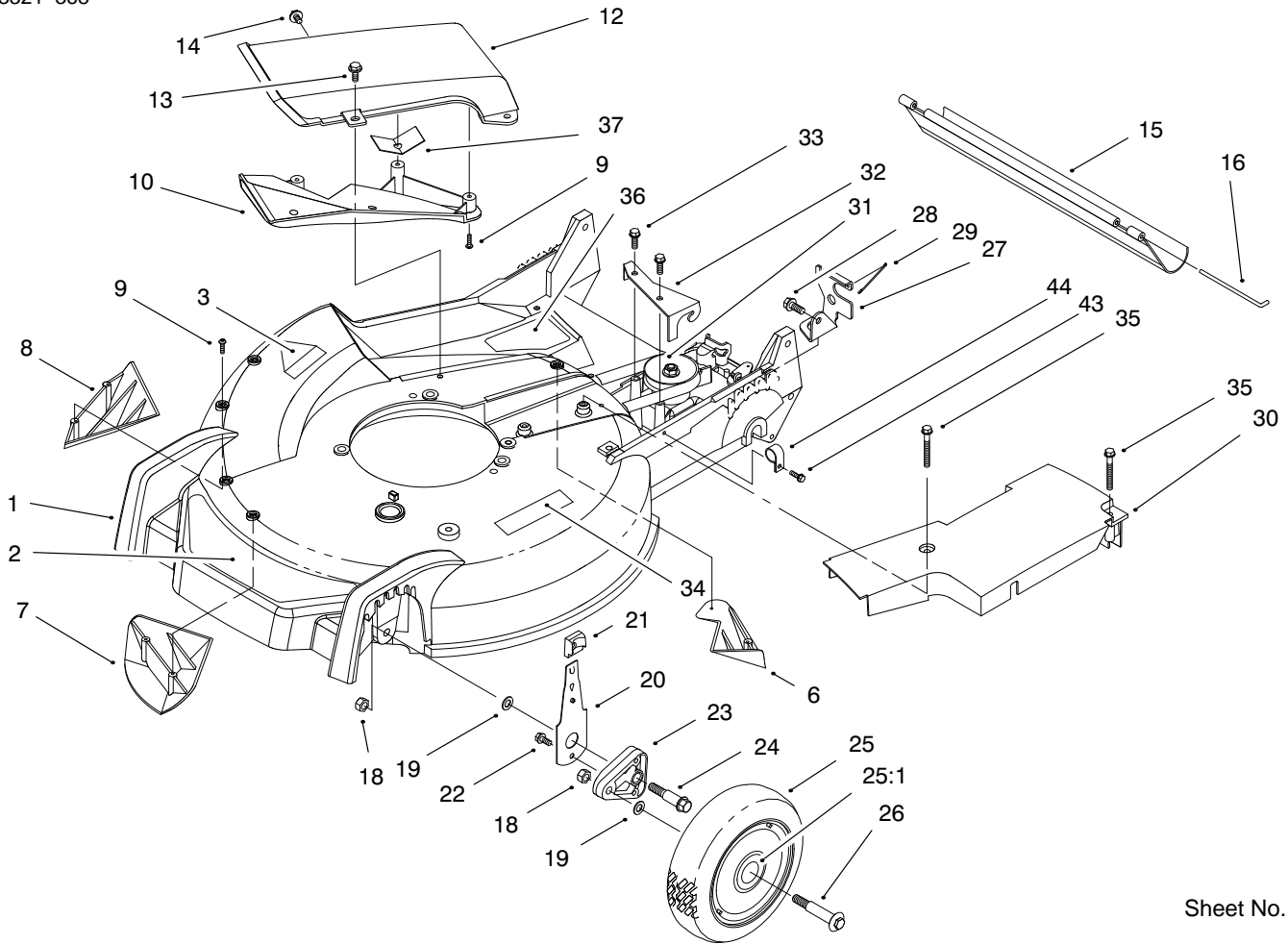
For example, a wheel assembly might be identified by reference number 6, the tire by 6:1, the valve by 6:2, and the wheel by 6:3. When you order the assembly identified by reference number 6, you receive all parts identified by reference numbers 6:1, 6:2, and 6:3. However, you may also order any part individually.

Reference numbers of this type appear in part lists and as callouts in illustrations.

Reference Numbers with Quantities

Illustrations may have a quantity in parentheses next to a reference number, in the form $X (Y)$. X is the reference number. Y in parentheses is the quantity of the part identified by the reference number.

For example, the illustration callout 4 (2) indicates that two parts are used in that instance.

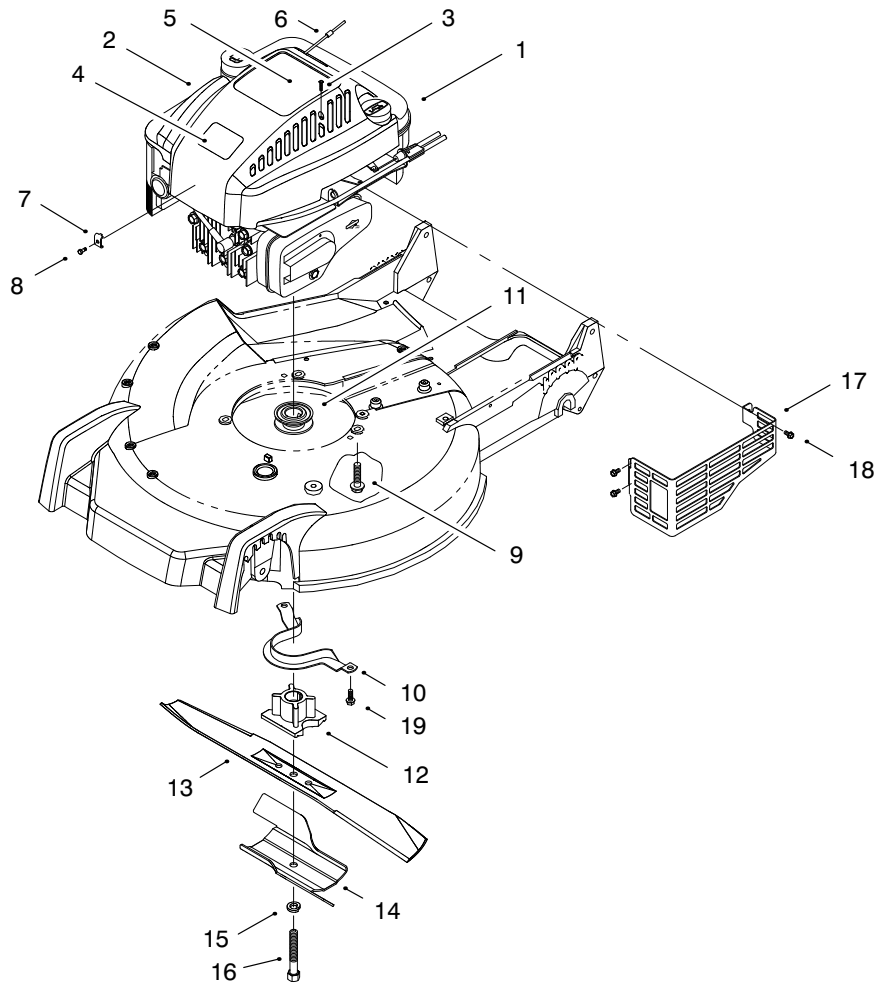


Sheet No.:2

Housing Assembly

Ref. No.	Part No.	Qty.	Description
1	98-7148	1	Housing-Rwd
2	93-3696	1	Decal-Deck
3	39-5770	1	Decal-Danger
6	92-1750	1	Plate-Kicker Rear
7	92-1720	1	Kicker-RH
8	92-1730	1	Kicker-LH
9	32144-111	6	Screw - PPH
10		1	Deflector-Recycler
11		1	Guard-Cover
12	17-5179	1	Cover-Recycler
13	46-6811	3	Screw-HWH
14	46-6810	1	Screw HWH
15	44-0580	1	Shield-Trailing
16	33-3208	1	Rod-Shield
18	3296-6	4	Nut-Lock
19	40-1940	4	Washer
20	66-0541	2	ASM-Spring Arm
21	25-7740	2	Knob-Arm
22	32144-85	2	Screw-HH
23	66-0580	2	Arm-Pivot
24	66-0560	2	Screw-Shoulder
25	14-9989	2	ASM-Wheel & Tire
25:1	27-6250	4	Bushing
26	27-6232	2	Bolt-Wheel HH
27	82-5680	1	Bracket-Adjustment
28	32144-70	1	Screw-TAP

Ref. No.	Part No.	Qty.	Description
29	46-7030	1	Retainer-Cable
30	98-1502	1	Cover-Belt
31	62-6673	1	ASM-Gearcase
32	62-4320	1	Bracket-Guide
33	49-2040	2	Screw-HH
34	93-0248	1	Decal-Warning
35	37-7260	2	Screw-TAP
36	82-8450	1	Decal-Danger
37		5	Screw-PPH

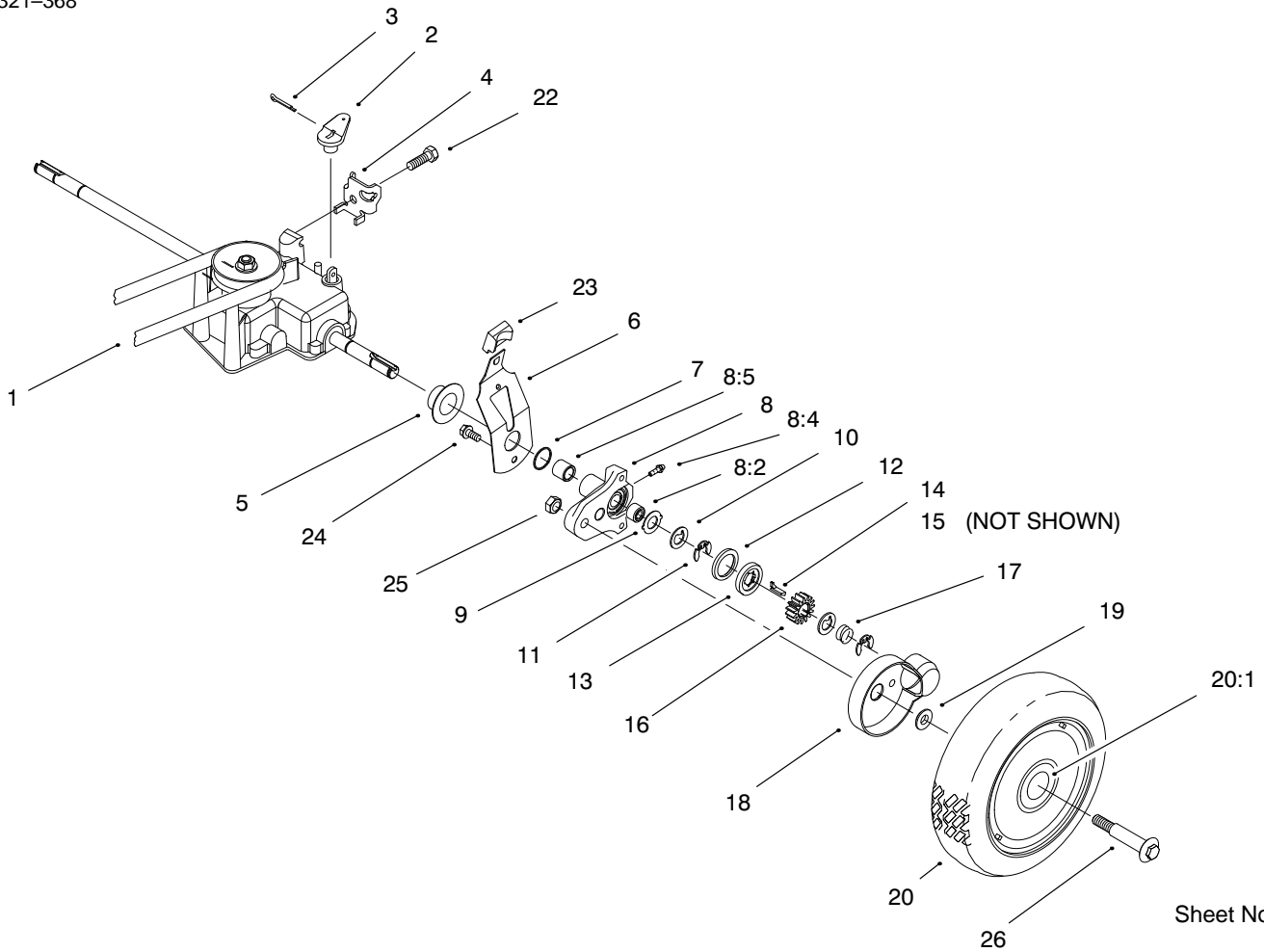


Sheet No.:3

Engine & Blade Assembly

Ref. No.	Part No.	Qty.	Description
1		1	Engine-Quantum 6.0 Hp
2	93-0243	1	Shroud
3	32144-121	2	Screw
4	98-3206	1	Plate-Logo
5	95-1671	1	Decal-Engine
6	2210-316	1	Rope-Stop
7	2210-249	1	Clamp-Casing
8	93-8470	1	Screw-Clamp
9	32144-102	3	Screw
10	66-0570	1	Guide-Belt
11	62-7550	1	Pulley-Driver
12	93-4107	1	Retainer-Blade
13	93-4106	1	Blade-Generation Iii
14	94-1608	1	Stiffener-Blade
15	3253-22	1	Washer-Lock
16	26-0670	1	Bolt-Blade
17	82-8550	1	Shield-Muffler
18	32144-73	3	Screw-HWHTF
19	32144-70	2	Screw-TAP

Ref. No.	Part No.	Qty.	Description

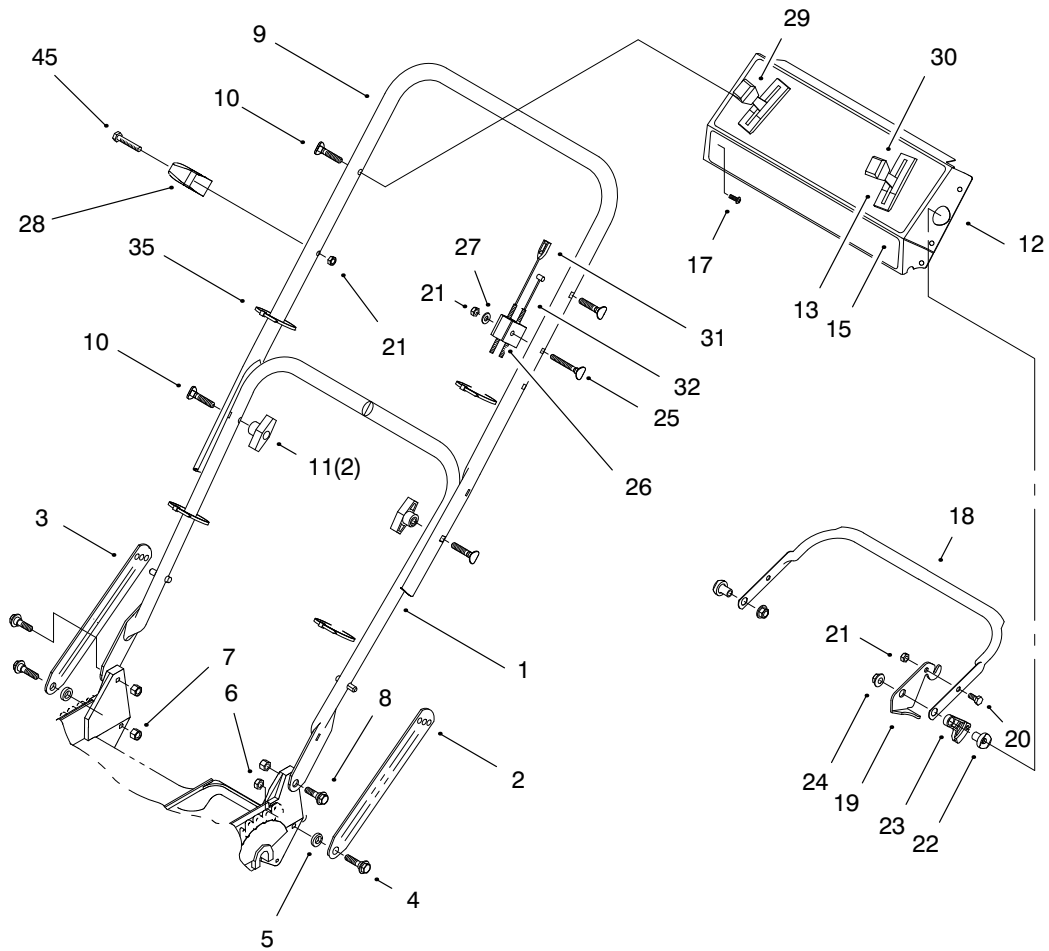


Sheet No.:4

Rear Axle Assembly

Ref. No.	Part No.	Qty.	Description
1	62-3900	1	V-Belt
2	60-8821	1	Lever-Shift
3	3272-10	1	Pin-Cotter
4	82-8780	1	Retainer-Cable
5	42-3520	2	Cap-End
6	63-8721	2	ASM-Arm
7	237-153	2	O-Ring
8	63-8701	2	ASM-Pivot
8:2	48-2060	2	Bearing-Needle
8:4	302-56	2	Fitting-Grease
8:5	70-9760	2	Bushing
9	65-4730	2	Washer-Thrust
10	65-4740	4	Washer-Thrust
11	65-2720	4	Ring-Retaining
12	65-4710	2	Ring-Friction
13	65-4760	2	Washer
14	66-6050	1	Key-Rocking LH
15	66-6040	1	Key-Locking RH
16	65-4750	2	Gear-Pinion
17	65-4720	2	Spring-Compression
18	74-1660	2	Cover-Wheel
19	74-1671	2	Spacer-Cover
20	16-0029	2	ASM-Wheel Gear & Tire
20:1	27-6250	4	Bushing
22	32144-70	1	Screw-TAP

Ref. No.	Part No.	Qty.	Description
23	25-7740	2	Knob-Arm
24	32144-85	2	Screw-HH
25	3296-6	2	Nut-Lock
26	27-6232	2	Bolt-Wheel HH

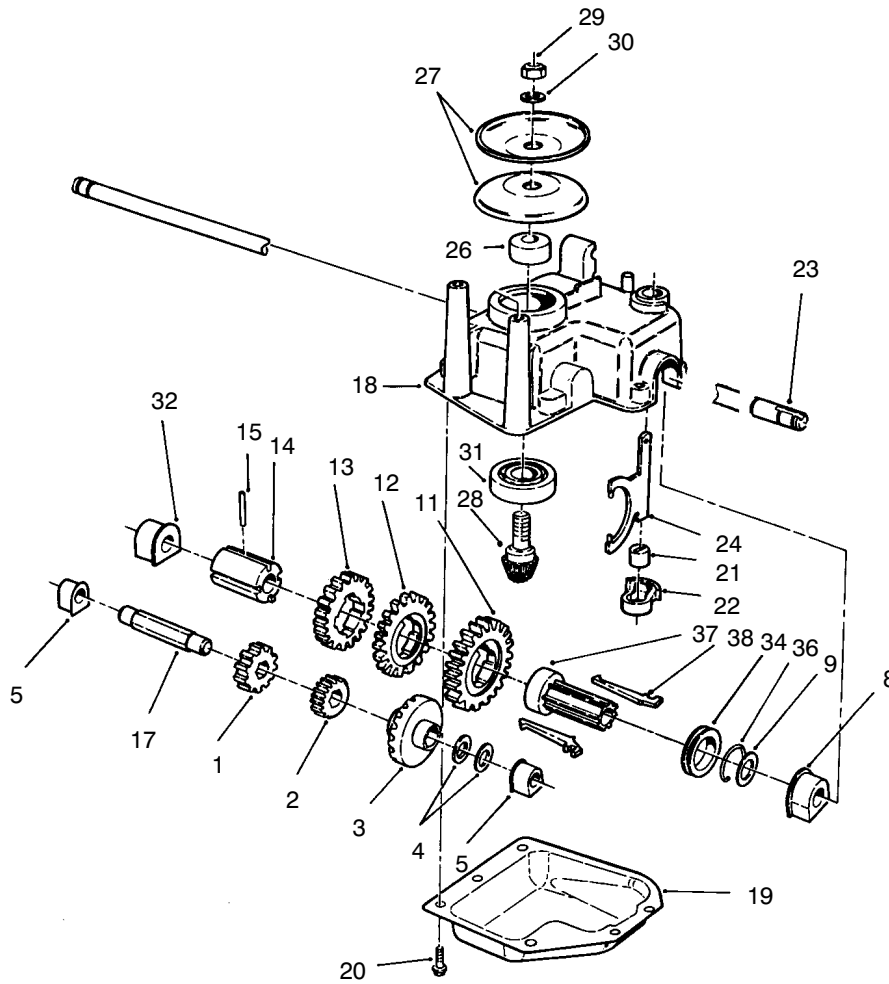


Sheet No.:5

Handle Assembly

Ref. No.	Part No.	Qty.	Description
1	82-5531	1	ASM-Handle
2	84-8361	1	Latch-Handle
3	84-8401	1	Latch-Handle
4	27-7210	2	Screw-Shoulder
5	3-3287	2	Spacer
6	3296-47	1	Nut-Lock
7	3296-72	3	Nut-Lock
8	27-7211	2	Screw-Shoulder
9	92-2278	1	Handle-Upper
10	92-2260	4	Screw-Handle
11	98-7134	2	Knob
12	98-9238	1	Panel-Control
13	98-1503	1	Decal-Instruction
15	93-3697	1	Decal-Panel
17	92-9665	5	Screw-Phil
18	71-3080	1	Bar-Control
19	66-5351	1	Lever-Control
20	321-39	1	Screw-HH
21	3296-73	3	Nut-Lock
22	49-1630	2	Spacer-Support
23	46-5520	1	Lever-Traction
24	3296-74	2	Nut-Flange
25	92-2269	1	Screw-Handle
26	46-6980	1	Support-Cable
27	3256-1	1	Washer-Flat
28	93-7383	1	Guide-Rope

Ref. No.	Part No.	Qty.	Description
29	76-2712	1	Control-Speed
30	98-7149	1	Cable-Throttle
31	93-4187	1	Cable-Brake
32	46-5481	1	Cable-Traction
35	3290-378	4	Tie-Cable
45	321-51	1	Bolt-Hex

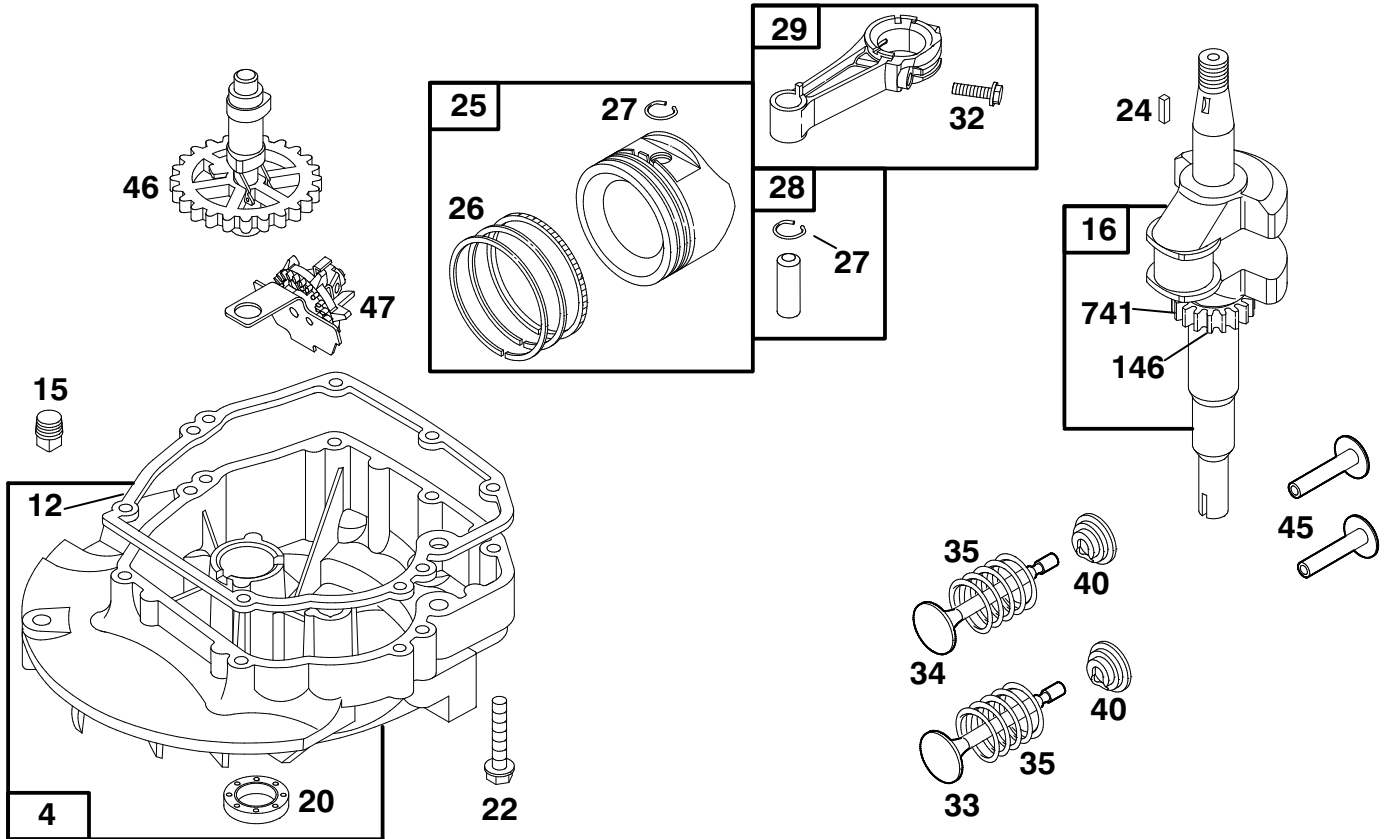


Sheet No.:101

Gear Case Assembly

Ref. No.	Part No.	Qty.	Description
1	55-3800	1	Pinion 25t 3rd Gear
2	55-3780	1	Pinion 20t 2nd Gear
3	55-3760	1	15 T Pinion
4	36-4791	2	Washer-Thrust
5	60-8750	2	Bushing
8	60-8770	1	Bushing-Output Shaft
9	36-4780	1	Washer-Thrust
11	55-3770	1	Gear 49t 1st Gear
12	55-3790	1	Gear 44t 2nd Gear
13	55-3810	1	Gear 39t 3rd Gear
14	60-8790	1	Sleeve-Gear
15	32121-120	1	Pin-Coil
17	60-8800	1	Shaft-Intermediate
18	60-8710	1	Gearcase-Upper 3 Sp
19	60-8730	1	Cover-Gearcase
20	49-2040	6	Screw-HH
21	29-9570	1	Bushing-Yoke
22	60-8810	1	Retainer-Shift-Fork
23	65-4770	1	Shaft-Output
24	60-8870	1	Yoke-Shift
26	62-6660	1	Spacer-Pulley
27	60-8840	2	Pulley-Half
28	60-8890	1	Gear-Pinion
29	3296-5	1	Nut-Lock
30	3256-24	1	Washer-Flat
31	38-7820	1	Bearing-Ball

Ref. No.	Part No.	Qty.	Description
32	60-8850	1	Bushing-Output
34	76-0770	1	Collar-Shift
36	65-5250	1	Clip-Spring
37	76-0780	1	Sleeve-Shift Key
38	76-0760	2	Key-Shift



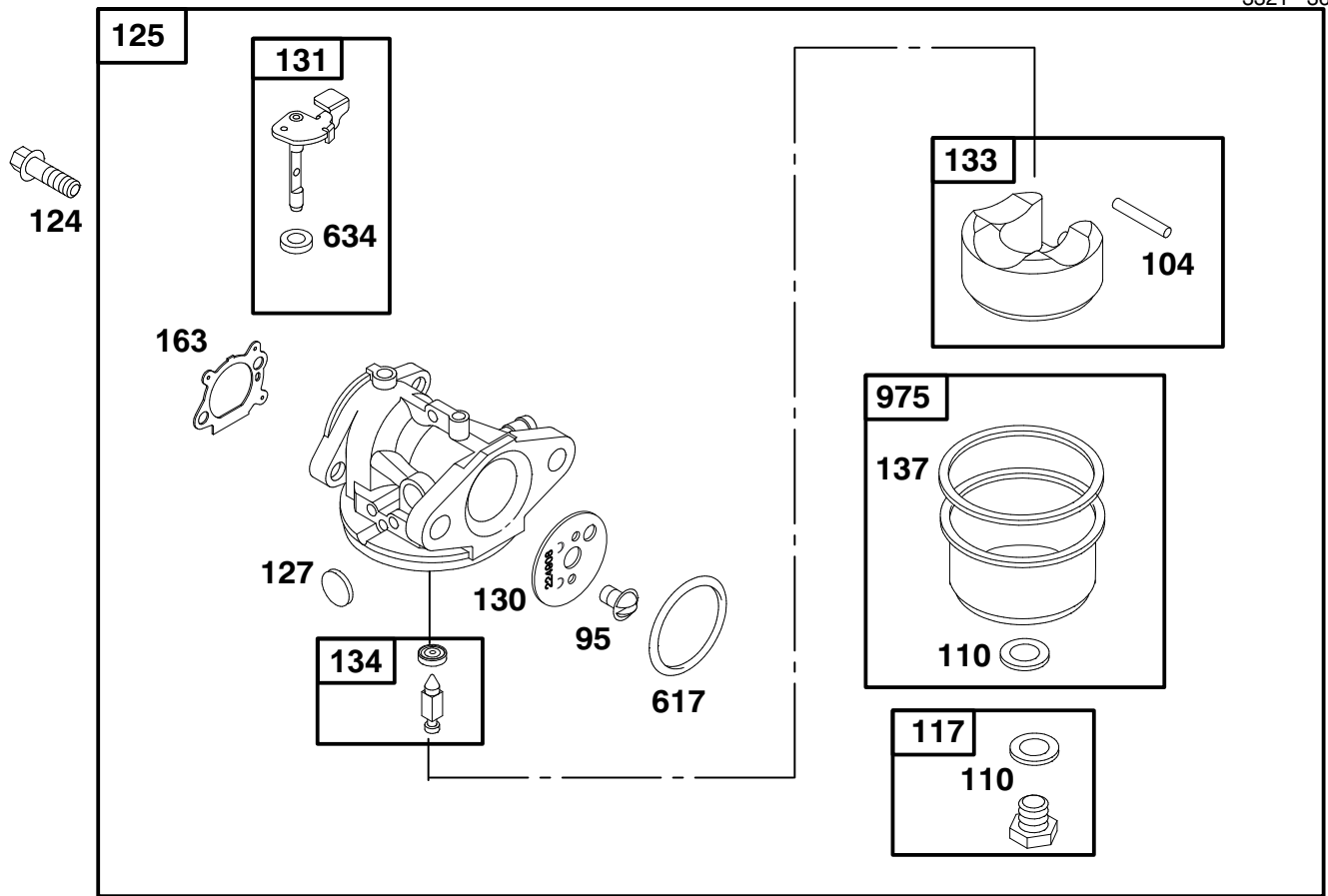
Assemblies include all parts shown in frames.

ENGINE BRIGGS & STRATTON MODEL 12H802-1758-E1

Ref. No.	Part No.	Description	No. Used
4	493279	Sump – Engine	1
★12	272198	Gasket – Crankcase	1
15	94880	Plug – Oil Drain	1
16	498573	Crankshaft	1
★20	399781	Seal – Oil	1
22	94220	Screw – Hex. Note: 94612 Screw – Hex. (One (1) Used in Hole Nearest Breather.)	1
24	222698	Key – Flywheel	1
25	499429	Piston Assy. (Standard)	1
	499430	Piston Assy. (0.010" O.S.)	1
	499431	Piston Assy. (0.020" O.S.)	1
	499432	Piston Assy. (0.030" O.S.)	1

Ref. No.	Part No.	Description	No. Used
26	499425	Ring Set (Standard)	1
	499426	Ring Set (0.010" O.S.)	1
	499427	Ring Set (0.020" O.S.)	1
	499428	Ring Set (0.030" O.S.)	1
27	263190	Lock – Piston Pin	1
28	499423	Pin – Piston (Standard)	1
29	499424	Rod Assembly – Connecting	1
32	94699	Screw – Connecting Rod	1
33	262651	Valve – Exhaust	1
34	262652	Valve – Intake	1
35	262224	Spring – Valve	1
40	93312	Retainer – Valve Spring	1
45	262204	Tappet – Valve	1
46	498275	Gear – Cam	1
47	493737	Slinger – Oil	1
146	94388	Key – Timing	1
741	262598	Gear – Timing	1

★Included in Gasket Set – Part No. 497316.



Assemblies include all parts shown in frames.

ENGINE BRIGGS & STRATTON MODEL 12H802-1758-E1

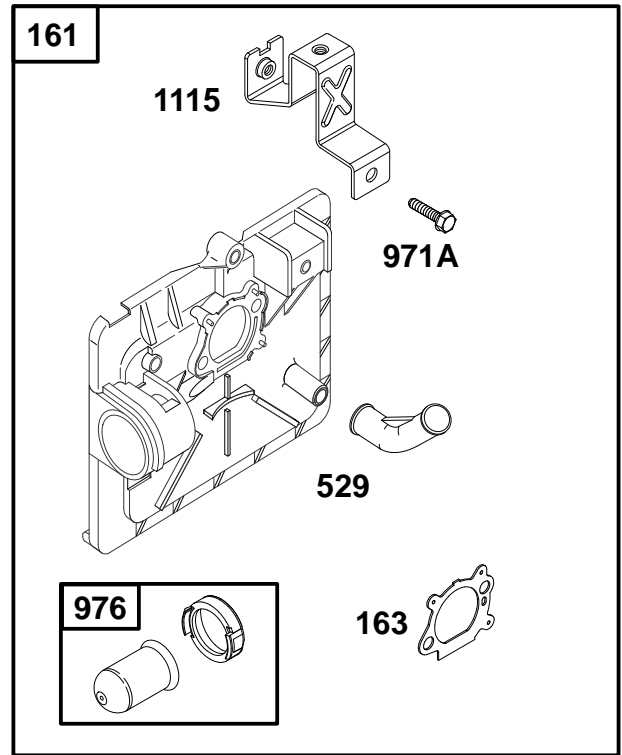
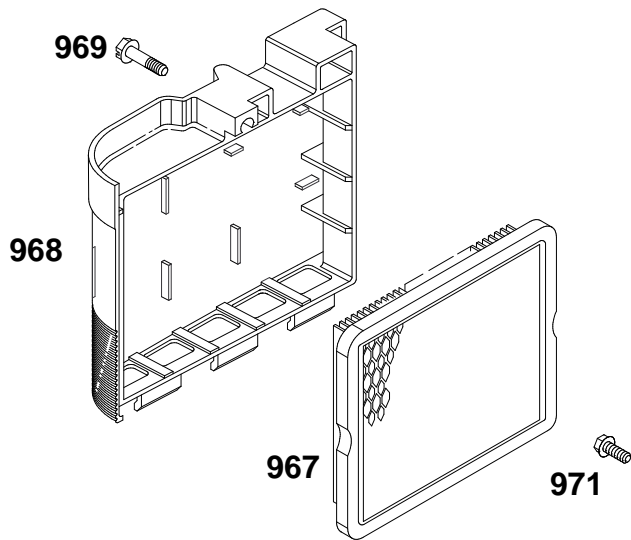
Ref. No.	Part No.	Description	No. Used
95	94098	Screw – Slotted	1
●104	231371	Pin – Float Hinge	1
◆◆110		Washer – Bowl (Sold in Kit Only).	1
117	494870	Jet – Main (Std.) Note: 497315	1
		Jet – Main (High Altitude)	1
124	94840	Screw – Hex	1
125	498170	Carburetor	1
●127		Plug – Welch (Sold in Kit Only).	1

Ref. No.	Part No.	Description	No. Used
130	224908	Valve – Throttle	1
131	493267	Shaft – Throttle	1
133	398187	Float – Carburetor	1
●134	398188	Kit – Needle/Seat	1
◆◆137		Gasket – Bowl (Sold in Kit Only).	1
◆◆*163	272653	Gasket – Air Cleaner	1
◆◆617	270344	Seal – Intake Manifold	1
◆◆634		Washer – Foam (Sold in Kit Only).	1
975	493640	Bowl – Float	1

*Included in Gasket Set – Part No. 497316.

●Included in Carburetor Kit – Part No. 498260.

◆Included in Carburetor Gasket Set – Part No. 498261.



Assemblies include all parts shown in frames.

ENGINE BRIGGS & STRATTON MODEL 12H802-1758-E1

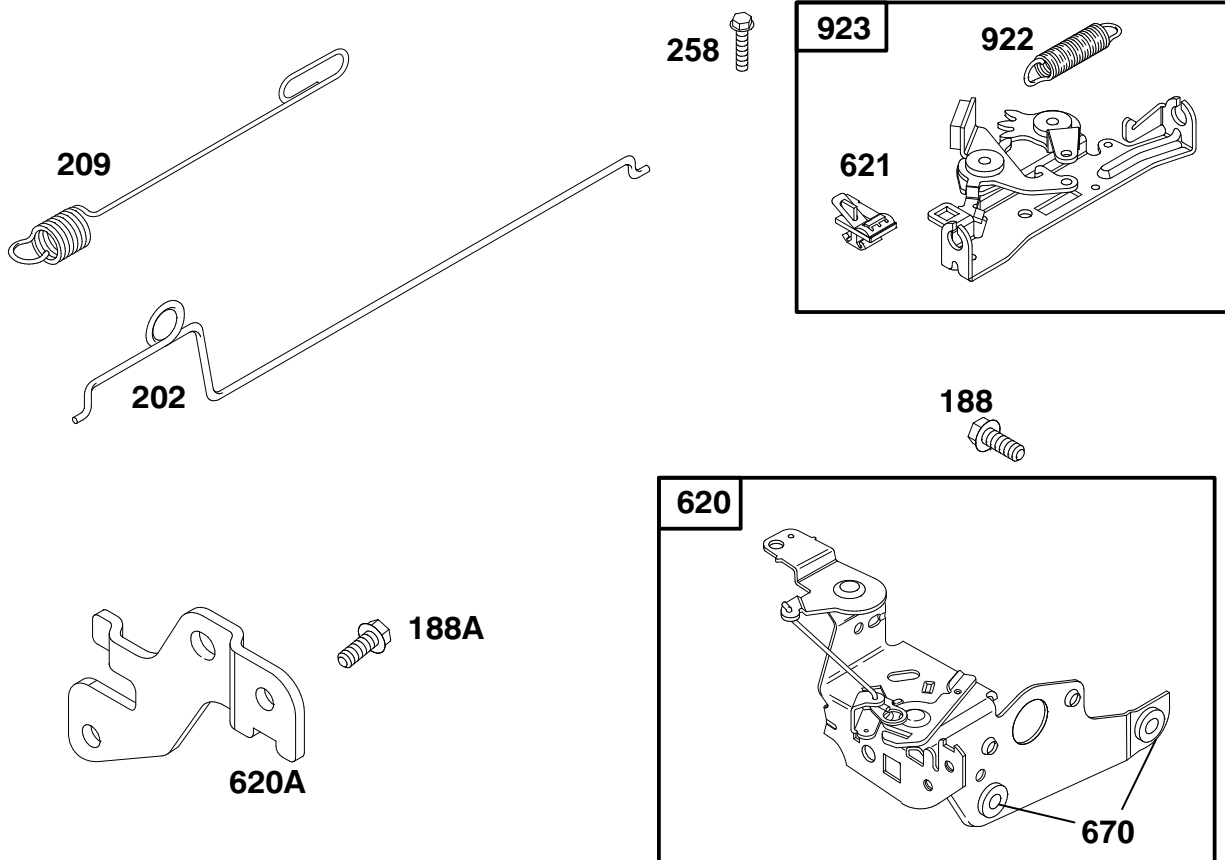
Ref. No.	Part No.	Description	No. Used
161	496116	Base – Air Cleaner	1
◆◆★163	272653	Gasket – Air Cleaner	1
529	281299	Grommet	1
967	491588	Filter – Air	1
968	281340	Cover – Air Cleaner	1

Ref. No.	Part No.	Description	No. Used
969	94872	Screw – Slotted Hex.	1
971	94873	Screw – Hex.	1
971A	94749	Screw – Hex.	1
976	496115	Primer – Carburetor	1
1115	224815	Bracket – Support	1

★Included in Gasket Set—Part No. 497316.

●Included in Carburetor Kit—Part No. 498260.

◆Included in Carburetor Gasket Set—Part No. 498261.



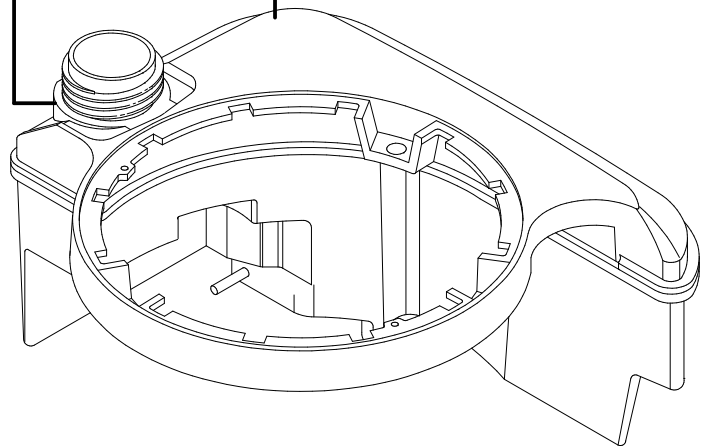
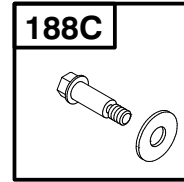
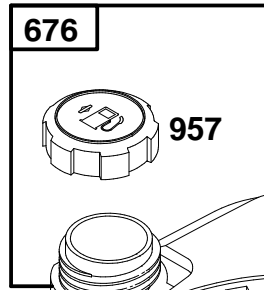
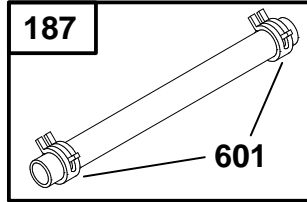
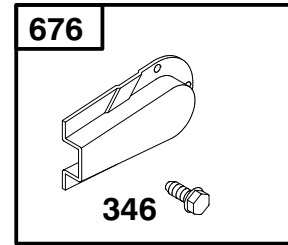
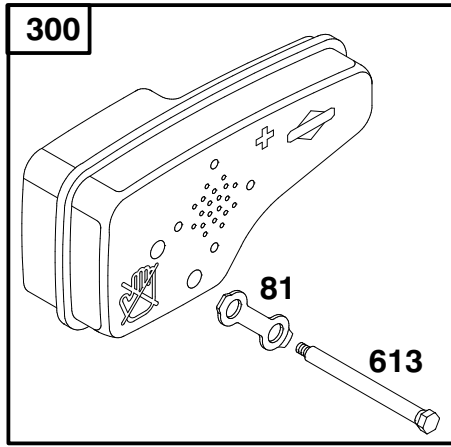
Assemblies include all parts shown in frames.

ENGINE BRIGGS & STRATTON MODEL 12H802-1758-E1

Ref. No.	Part No.	Description	No. Used
188	94644	Screw – Hex.	1
188A	94874	Screw – Hex.	1
202	262579	Link – Governor	1
209	263046	Spring – Governor	1
258	94512	Screw – Hex.	1
620	497203	Bracket – Carburetor	1

Ref. No.	Part No.	Description	No. Used
620A	225152	Bracket – Control	1
621	396847	Switch – Stop	1
★670	493823	Spacer – Bracket	1
		Note: Includes Two.	1
922	262640	Spring – Brake	1
923	493442	Brake Assembly	1

★Included in Gasket Set – Part No. 497316.

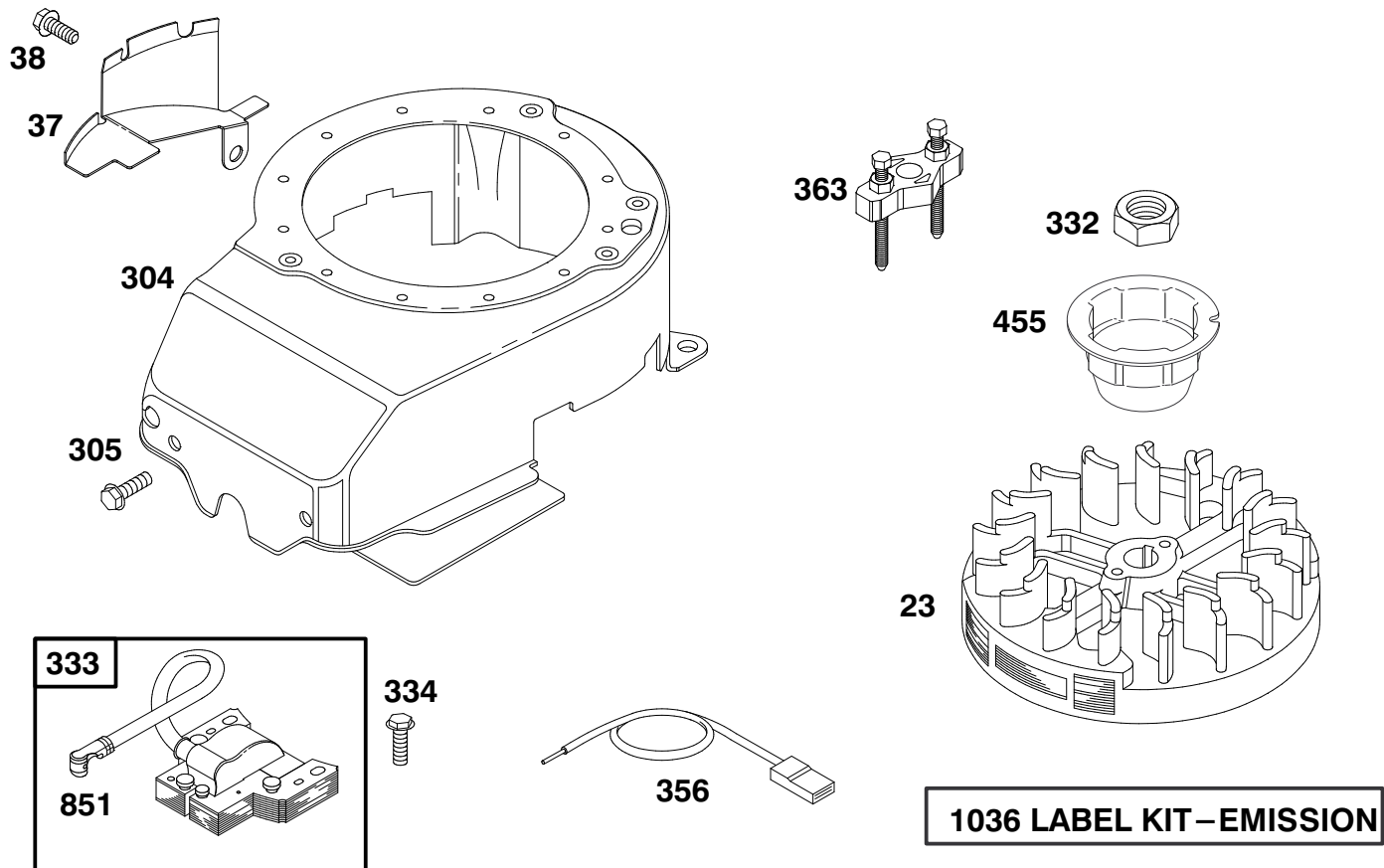


Assemblies include all parts shown in frames.

ENGINE BRIGGS & STRATTON MODEL 12H802-1758-E1

Ref. No.	Part No.	Description	No. Used
81	223664	Lock – Muffler Screw	1
187	298049	Line – Fuel (Cut to Required Length)	1
188C	398540	Screw – Shoulder	1
284	94511	Screw – Shoulder	1
300	497838	Muffler – Exhaust	1
346	94896	Screw – Hex.	1

Ref. No.	Part No.	Description	No. Used
601	93053	Clamp – Hose	1
613	94231	Screw – Shoulder	1
670A	280512	Spacer – Fuel Tank	1
676	493871	Deflector – Muffler	1
957	397974	Cap – Fuel Tank	1
972	495224	Tank – Fuel	1

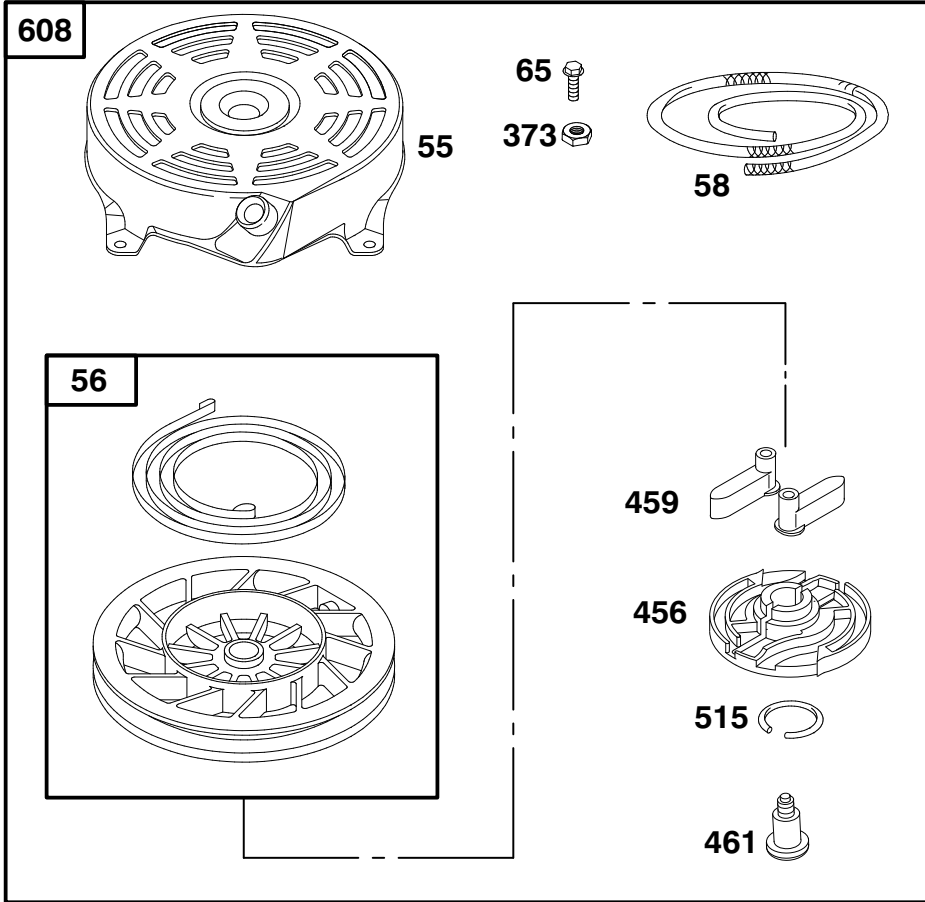


Assemblies include all parts shown in frames.

ENGINE BRIGGS & STRATTON MODEL 12H802-1758-E1

Ref. No.	Part No.	Description	No. Used
23	492177	Flywheel	1
37	224511	Guard - Flywheel	1
38	94786	Screw - Hex.	1
304	493293	Housing - Blower	1
305	94744	Screw - Hex.	1
332	94877	Nut - Flywheel	1
333	802574	Armature - Magneto	1

Ref. No.	Part No.	Description	No. Used
334	94731	Screw - Hex.	1
356	497833	Wire - Stop	1
363	19069	Puller - Flywheel	1
455	225121	Cup - Flywheel	1
851	493880	Terminal - Cable	1
1036	499341	Label Kit - Emission	1

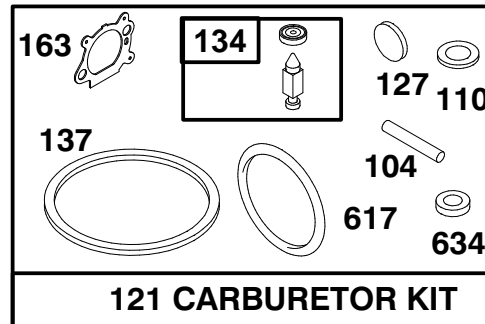
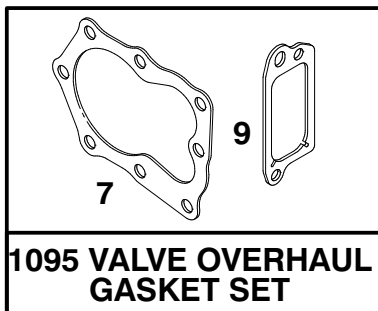
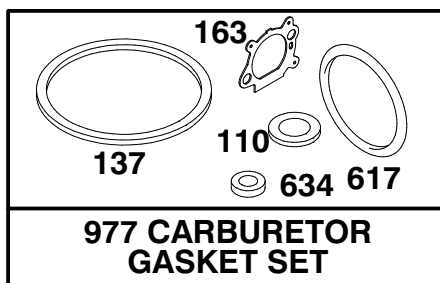
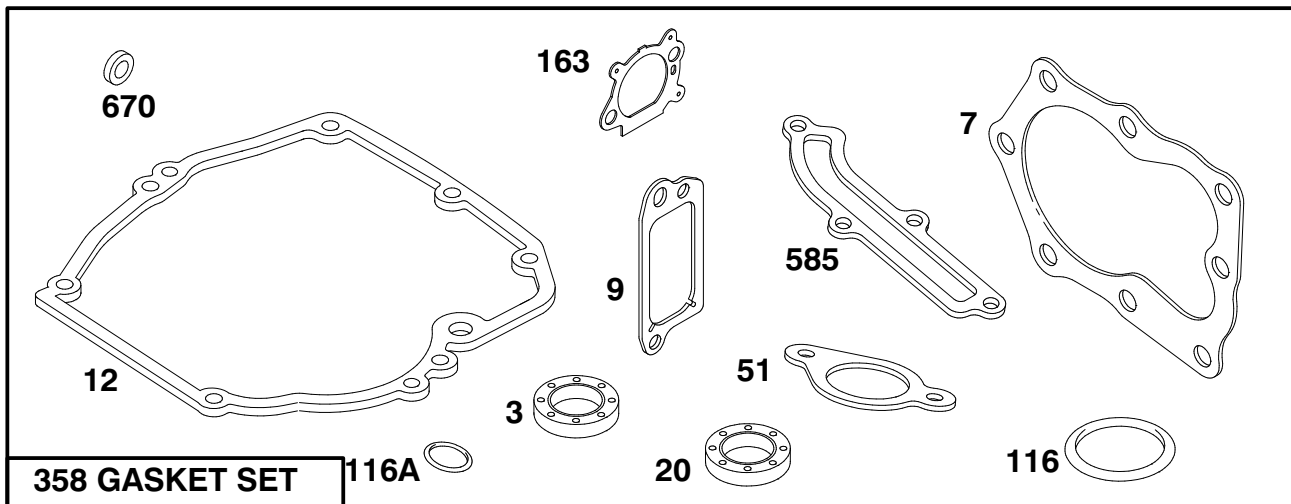


Assemblies include all parts shown in frames.

ENGINE BRIGGS & STRATTON MODEL 12H802-1758-E1

Ref. No.	Part No.	Description	No. Used
55	497440	Housing – Rewind Starter	1
56	498144	Pulley – Starter	1
58	280399	Rope – Starter	1
59	224467	Insert – Starter Grip	1
60	493926	Grip – Starter Rope	1
65	94904	Screw – Hex.	1

Ref. No.	Part No.	Description	No. Used
373	94908	Nut – Hex.	1
456	281503	Retainer – Spring	1
459	281505	Pawl – Ratchet	1
461	94943	Screw – Shoulder	1
515	263073	Spring – Friction	1
608	497680	Starter – Rewind	1



Assemblies include all parts shown in frames.

ENGINE BRIGGS & STRATTON MODEL 12H802-1758-E1

Ref. No.	Part No.	Description	No. Used
★3	299819	Seal – Oil	1
†★7	272916	Gasket – Cylinder Head	1
†★9	272481	Gasket – Breather	1
★9A	272238	Gasket – Breather	1
★12	272198	Gasket – Crankcase	1
★20	399781	Seal – Oil	1
★51	272199	Gasket – Intake	1
●104	231371	Pin – Float Hinge	1
●◆110		Washer – Bowl (Sold in Kit Only).	1
★116	280393	Seal – O Ring	1
★116A	280966	Seal – O Ring	1
121	498260	Carburetor Kit	1
●127		Plug – Welch (Sold in Kit Only).	1

Ref. No.	Part No.	Description	No. Used
●134	398188	Kit – Needle/Seat	1
●◆137		Gasket – Bowl (Sold in Kit Only).	1
●◆★163	272653	Gasket – Air Cleaner	1
358	496117	Gasket Set	1
●◆617	270344	Seal – Intake Manifold	1
●◆634		Washer – Foam (Sold in Kit Only).	1
★670	493823	Spacer – Bracket Note: Includes Two.	1
977	498261	Gasket Set – Carburetor	1
1095	498528	Gasket Set – Valve Overhaul	1

★Included in Gasket Set–Part No. 497316.

†Included in Valve Overhaul Gasket Set–Part No. 498528.

●Included in Carburetor Kit–Part No. 498260.

◆Included in Carburetor Gasket Set–Part No. 498261.

Toro Part Number Index

Part No.	Page No.	Ref. No.	Qty.	Description
3-3287	4	5	2	Spacer
14-9989	1	25	2	ASM-Wheel & Tire
16-0029	3	20	2	ASM-Wheel Gear & Tire
17-5179	1	12	1	Cover-Recycler
25-7740	1	21	2	Knob-Arm
25-7740	3	23	2	Knob-Arm
26-0670	2	16	1	Bolt-Blade
27-6232	1	26	2	Bolt-Wheel HH
27-6232	3	26	2	Bolt-Wheel HH
27-6250	1	25:1	4	Bushing
27-6250	3	20:1	4	Bushing
27-7210	4	4	2	Screw-Shoulder
27-7211	4	8	2	Screw-Shoulder
29-9570	5	21	1	Bushing-Yoke
33-3208	1	16	1	Rod-Shield
36-4780	5	9	1	Washer-Thrust
36-4791	5	4	2	Washer-Thrust
37-7260	1	35	2	Screw-TAP
38-7820	5	31	1	Bearing-Ball
39-5770	1	3	1	Decal-Danger
40-1940	1	19	4	Washer
42-3520	3	5	2	Cap-End
44-0580	1	15	1	Shield-Trailing
46-5481	4	32	1	Cable-Traction
46-5520	4	23	1	Lever-Traction
46-6810	1	14	1	Screw HWH
46-6811	1	13	3	Screw-HWH
46-6980	4	26	1	Support-Cable
46-7030	1	29	1	Retainer-Cable
48-2060	3	8:2	2	Bearing-Needle
49-1630	4	22	2	Spacer-Support
49-2040	1	33	2	Screw-HH
49-2040	5	20	6	Screw-HH
55-3760	5	3	1	15 T Pinion
55-3770	5	11	1	Gear 49t 1st Gear
55-3780	5	2	1	Pinion 20t 2nd Gear
55-3790	5	12	1	Gear 44t 2nd Gear
55-3800	5	1	1	Pinion 25t 3rd Gear
55-3810	5	13	1	Gear 39t 3rd Gear
60-8710	5	18	1	Gearcase-Upper 3 Sp
60-8730	5	19	1	Cover-Gearcase
60-8750	5	5	2	Bushing
60-8770	5	8	1	Bushing-Output Shaft
60-8790	5	14	1	Sleeve-Gear
60-8800	5	17	1	Shaft-Intermediate
60-8810	5	22	1	Retainer-Shift-Fork
60-8821	3	2	1	Lever-Shift
60-8840	5	27	2	Pulley-Half
60-8850	5	32	1	Bushing-Output
60-8870	5	24	1	Yoke-Shift
60-8890	5	28	1	Gear-Pinion
62-3900	3	1	1	V-Belt
62-4320	1	32	1	Bracket-Guide
62-6660	5	26	1	Spacer-Pulley
62-6673	1	31	1	ASM-Gearcase
62-7550	2	11	1	Pulley-Driver
63-8701	3	8	2	ASM-Pivot
63-8721	3	6	2	ASM-Arm
65-2720	3	11	4	Ring-Retaining
65-4710	3	12	2	Ring-Friction
65-4720	3	17	2	Spring-Compression
65-4730	3	9	2	Washer-Thrust

*Not Illustrated

Toro Part Number Index (cont.)

Part No.	Page No.	Ref. No.	Qty.	Description
65-4740	3	10	4	Washer-Thrust
65-4750	3	16	2	Gear-Pinion
65-4760	3	13	2	Washer
65-4770	5	23	1	Shaft-Output
65-5250	5	36	1	Clip-Spring
66-0541	1	20	2	ASM-Spring Arm
66-0560	1	24	2	Screw-Shoulder
66-0570	2	10	1	Guide-Belt
66-0580	1	23	2	Arm-Pivot
66-5351	4	19	1	Lever-Control
66-6040	3	15	1	Key-Locking RH
66-6050	3	14	1	Key-Rocking LH
70-9760	3	8:5	2	Bushing
71-3080	4	18	1	Bar-Control
74-1660	3	18	2	Cover-Wheel
74-1671	3	19	2	Spacer-Cover
76-0760	5	38	2	Key-Shift
76-0770	5	34	1	Collar-Shift
76-0780	5	37	1	Sleeve-Shift Key
76-2712	4	29	1	Control-Speed
82-5531	4	1	1	ASM-Handle
82-5680	1	27	1	Bracket-Adjustment
82-8450	1	36	1	Decal-Danger
82-8550	2	17	1	Shield-Muffler
82-8780	3	4	1	Retainer-Cable
84-8361	4	2	1	Latch-Handle
84-8401	4	3	1	Latch-Handle
92-1720	1	7	1	Kicker-RH
92-1730	1	8	1	Kicker-LH
92-1750	1	6	1	Plate-Kicker Rear
92-2260	4	10	4	Screw-Handle
92-2269	4	25	1	Screw-Handle
92-2278	4	9	1	Handle-Upper
92-9665	4	17	5	Screw-Phil
93-0243	2	2	1	Shroud
93-0248	1	34	1	Decal-Warning
93-3696	1	2	1	Decal-Deck
93-3697	4	15	1	Decal-Panel
93-4106	2	13	1	Blade-Generation Iii
93-4107	2	12	1	Retainer-Blade
93-4187	4	31	1	Cable-Brake
93-7383	4	28	1	Guide-Rope
93-8470	2	8	1	Screw-Clamp
94-1608	2	14	1	Stiffener-Blade
95-1671	2	5	1	Decal-Engine
98-1502	1	30	1	Cover-Belt
98-1503	4	13	1	Decal-Instruction
98-3206	2	4	1	Plate-Logo
98-7134	4	11	2	Knob
98-7148	1	1	1	Housing-Rwd
98-7149	4	30	1	Cable-Throttle
98-9238	4	12	1	Panel-Control
2210-249	2	7	1	Clamp-Casing
2210-316	2	6	1	Rope-Stop
237-153	3	7	2	O-Ring
302-56	3	8:4	2	Fitting-Grease
321-39	4	20	1	Screw-HH
321-51	4	45	1	Bolt-Hex
3253-22	2	15	1	Washer-Lock
3256-1	4	27	1	Washer-Flat
3256-24	5	30	1	Washer-Flat
3272-10	3	3	1	Pin-Cotter

*Not Illustrated

Toro Part Number Index (cont.)

Part No.	Page No.	Ref. No.	Qty.	Description
3290-378	4	35	4	Tie-Cable
3296-5	5	29	1	Nut-Lock
3296-6	1	18	4	Nut-Lock
3296-6	3	25	2	Nut-Lock
3296-47	4	6	1	Nut-Lock
3296-72	4	7	3	Nut-Lock
3296-73	4	21	3	Nut-Lock
3296-74	4	24	2	Nut-Flange
32121-120	5	15	1	Pin-Coil
32144-70	1	28	1	Screw-TAP
32144-70	2	19	2	Screw-TAP
32144-70	3	22	1	Screw-TAP
32144-73	2	18	3	Screw-HWHTF
32144-85	1	22	2	Screw-HH
32144-85	3	24	2	Screw-HH
32144-102	2	9	3	Screw
32144-111	1	9	6	Screw - PPH
32144-121	2	3	2	Screw