



Dirt and Rock Stakes

2226 Directional Drill

Model No. 23840

Model No. 23840E

Model No. 23934

Model No. 23934E

Installation Instructions

⚠ WARNING

CALIFORNIA Proposition 65 Warning

This product contains a chemical or chemicals known to the State of California to cause cancer, birth defects, or reproductive harm.

Loose Parts

Use the chart below to verify that all parts have been shipped.

Description	Qty.	Use
Dirt stakes	2	Install the dirt stakes.
Stake pin	2	
O-ring	2	
Rock stakes	2	Install the rock stakes.
Stake guide	2	
Spacer Plate	2	
Bolts	8	
Nuts	8	



Installing the Dirt Stakes

Preparing the Machine and Removing the Current Stakes

Note: Having 2 people or a lifting mechanism makes it easier to install the stakes.

1. Move the machine to a level surface.
2. Position the thrust frame 25.4 cm (12 inches) off the ground, with the stakes in the up position.
3. Turn the battery disconnect switch to the off position.
4. While holding the stakes, remove the O-rings and pins securing the stakes to the motors (Figure 1).

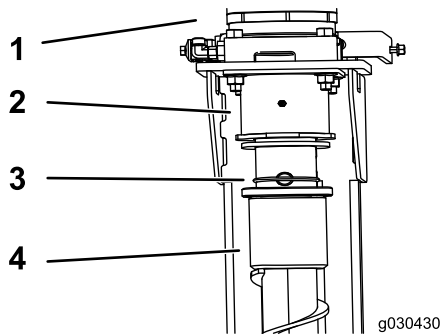


Figure 1

- | | |
|------------|-------------------|
| 1. Motor | 3. Pin and O-ring |
| 2. Coupler | 4. Stake |

5. Remove the existing stakes.
6. Pump grease into the fittings until grease begins to ooze out of the bearings (approximately 3 pumps) and wipe up any excess grease.

Installing the Dirt Stakes

Install the new stakes by aligning the hole in the stake with the hole in the motor coupler and secure it with the O-rings and pins included in this kit (Figure 2).

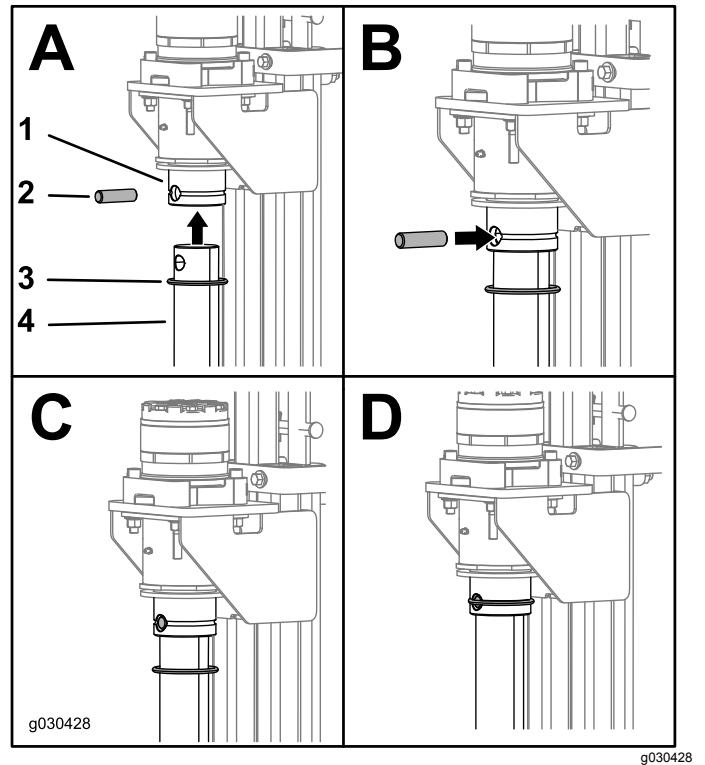


Figure 2

Rock stakes shown for illustrative purposes only.

- | | |
|------------|-----------|
| 1. Coupler | 3. O-ring |
| 2. Pin | 4. Stake |

Installing the Rock Stakes

Preparing the Machine and Removing the Current Stakes

Note: Having 2 people or a lifting mechanism makes it easier to install the stakes.

1. Move the machine to a level surface.
2. Position the thrust frame 25.4 cm (12 inches) off the ground, with the stakes in the up position.
3. Turn the battery disconnect switch to the off position.
4. Support the foot with a jack stand or equivalent.
5. While holding the stakes, remove the pins and e-clips securing the stakes to the motors ([Figure 1](#)).
6. Remove the existing stakes.

Installing the Rock Stakes

Have 2 people perform this procedure.

1. Slide the stake guide and spacer plate over the top of the rock stake as shown in [Figure 3](#).

Note: Have 1 person hold the stake in place while the other person continues this procedure.

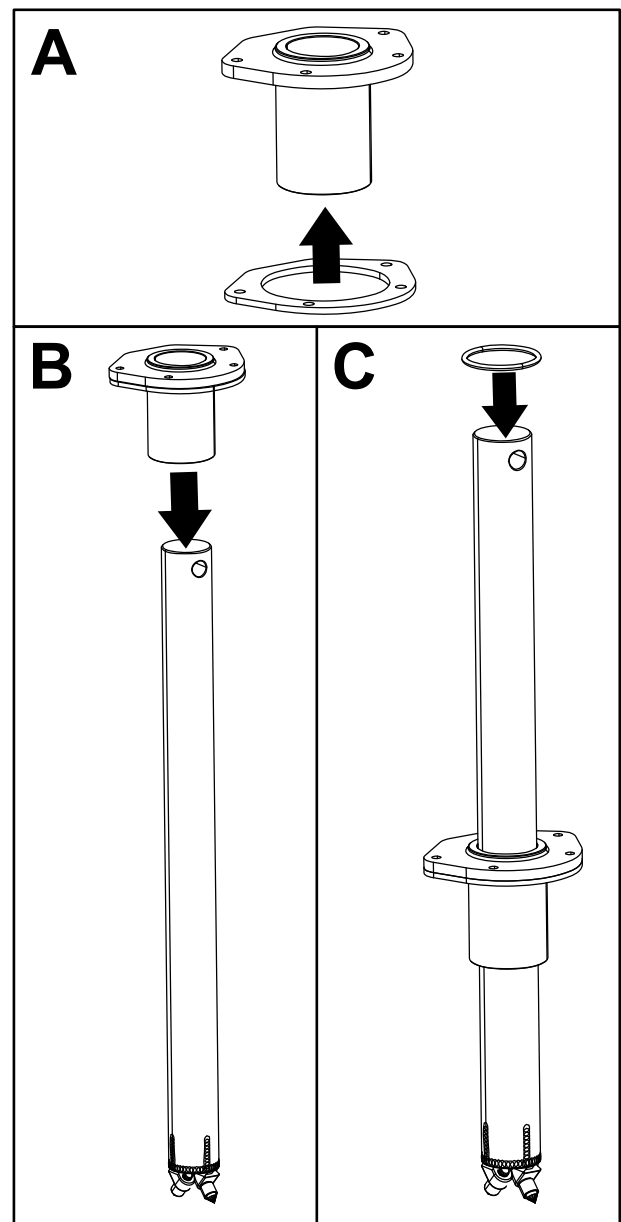
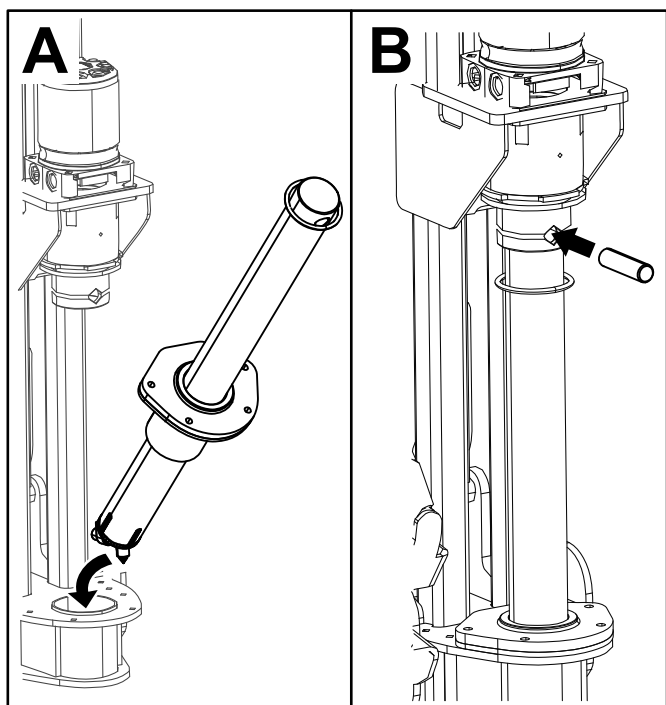


Figure 3

g231544

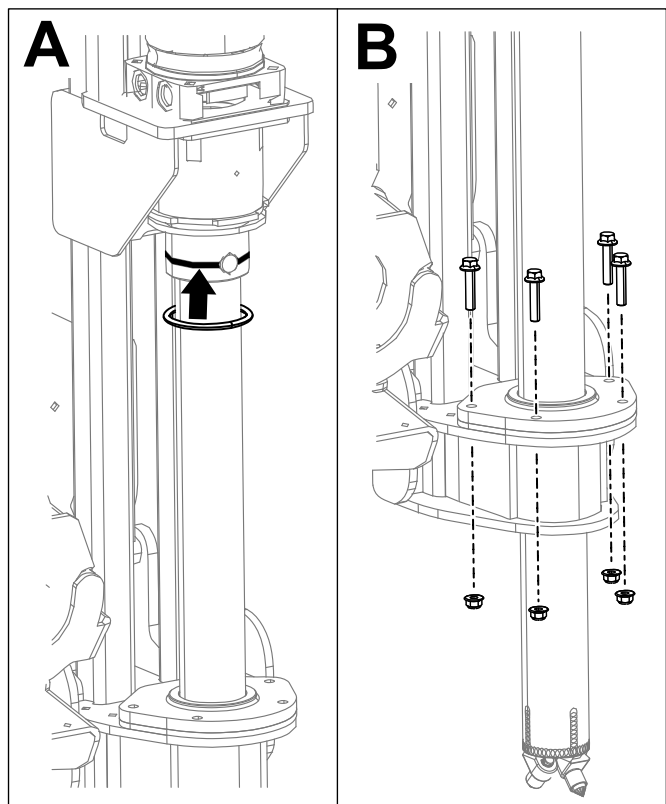
2. Place the O-ring over the stake and place the stake on the machine as shown in [Figure 3](#) and [Figure 4](#).



g231545

Figure 4

3. Align the hole in the stake with the hole in the motor and secure it with the pin and O-ring ([Figure 4](#) and [Figure 5](#)).



g231546

Figure 5

4. Secure the stake guide and spacer to the platform using 8 bolts and 8 nuts.
5. Torque the bolt to 37 to 45 N·m (27 to 33 ft-lb).