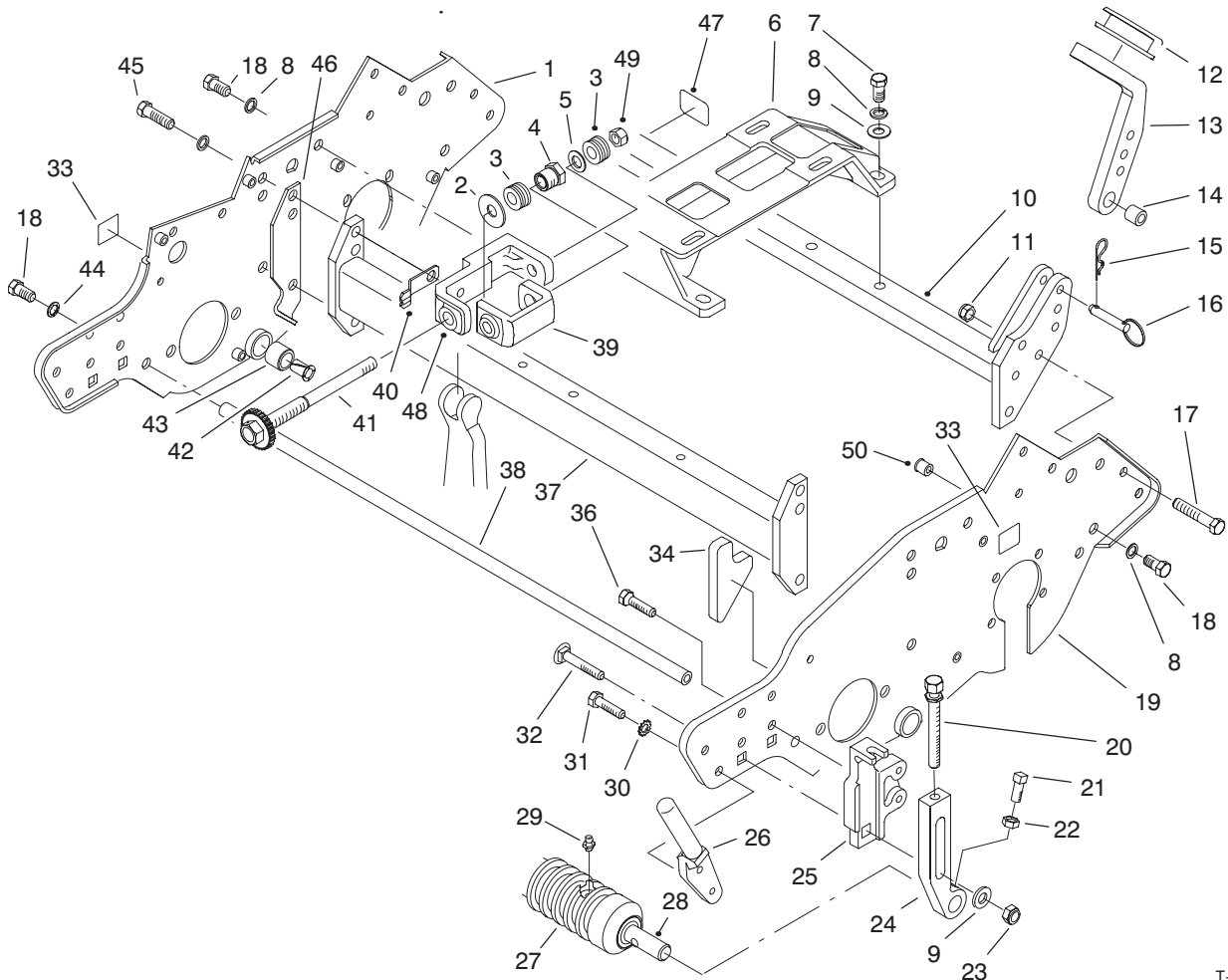



MODEL NO. 04052-80870 & UP
MODEL NO. 04052TE-80202 & UP
PARTS
CATALOG
GREENSMASTER® 1000
Traction Unit & Cutting Unit


T-1995-4

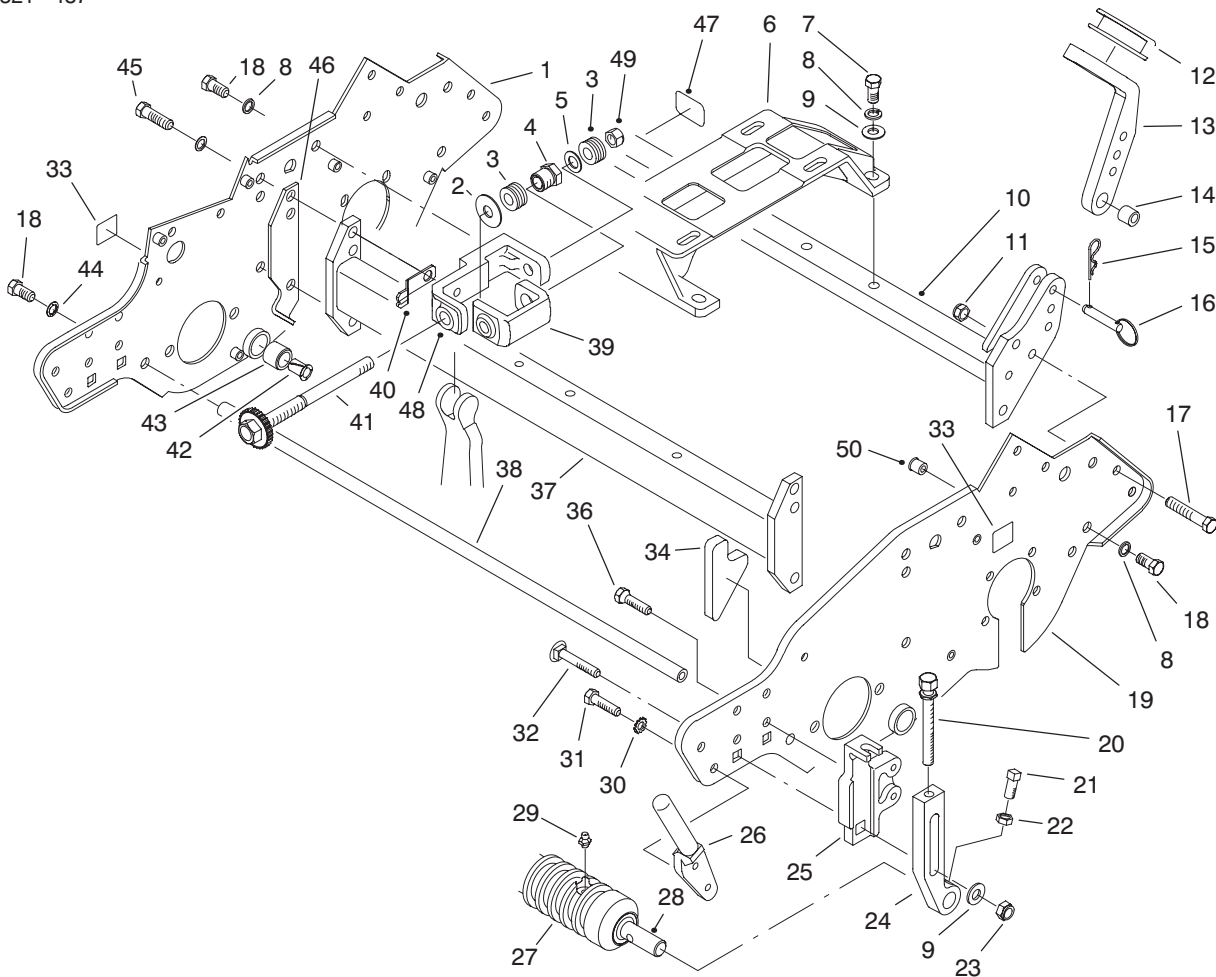
FRAME ASM

Ref. No.	Part No.	Description	No. Used	Ref. No.	Part No.	Description	No. Used
1	93-6093	Asm-Side Plate RH (Incl. Ref. #33 & 50)	1	15	3290-467	Pin-Cotter, Hair	2
2	94-5859	Washer-Hardened	2	16	93-6029	Pin-Ring	2
3	93-9043	Washer-Spring	32	17	322-9	Screw-HH	2
4	98-5913	Nut-Spring	2	18	323-4	Screw-HH	12
5	94-5858	Washer	2	19	93-6094	Asm-Side Plate LH (Incl. Ref. #33 & 50)	1
6	88-7670	Base-Engine	1	20	93-6051	Screw-Height of Cut	2
7	323-5	Screw-HH	4	21	3242-4	Screw-Set	2
8	3253-21	Washer-Spring Lock	16	22	3218-2	Nut-Jam	2
9	3256-24	Washer-Flat	6	23	3296-39	Nut-Lock	2
10	93-6025	Rear Frame	1	24	93-6090	Arm-Height of Cut	2
11	3296-29	Nut-Lock	2	25	93-6049	Bracket-Height of Cut, LH	1
12	65-7510	Grommet-Handle	2	*	93-6048	Bracket-Height of Cut, RH	1
13	93-6038	Arm-Handle LH	1	26	65-8570	Rod-Grass Catcher	2
*	93-6037	Arm-Handle RH	1	27	88-6790	Asm-Wiehle Roller (Incl. Ref. #28 & 29)	1
14	93-6024	Bushing-Handle Support	2				

© The TORO Company - 1998
All Rights Reserved

TPS

* Not Illustrated



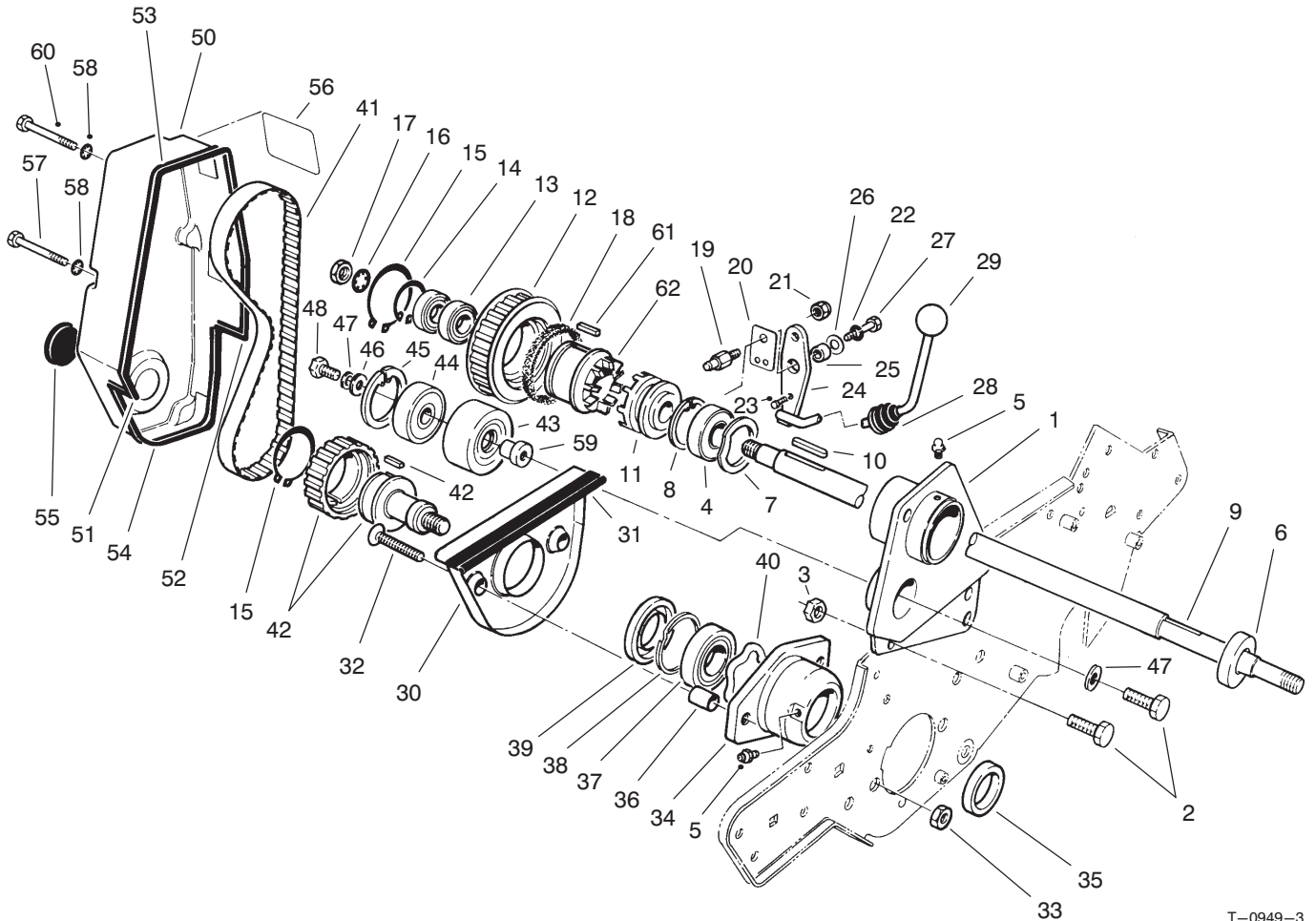
T-1995-4

FRAME ASM (Continued)

Ref. No.	Part No.	Description	No. Used
28	52-3180	Bearing	2
29	302-5	Fitting-Grease	2
30	3255-8	Washer-Lock	4
31	322-2	Screw-HH	4
32	3231-5	Screw-CARR	2
33	88-8950	Decal-Warning	3
33	93-9356	Decal-Warning (Europe)	3
33	93-9389	Decal-Warning (Japan)	3
34	93-6064	Seal-Grass Catcher	1
36	92-8914	Bolt-Tapered Face	4
37	93-6068	Asm-Front Frame Tube (Incl. Ref. #35)	1
38	88-7110	Rod-Frame Support	1
39	98-5912	Channel-Adjuster	2

Ref. No.	Part No.	Description	No. Used
40	94-5856	Spring-Detent	2
41	94-5873	Asm-Screw	2
42	52-2890	Bushing	2
43	63-9510	Asm-Bushing	2
44	3254-6	Washer-Int. Tooth Lock	2
45	323-6	Screw-HH	2
46	88-7100	Spacer-RH	1
*	88-7090	Spacer-LH	1
47	53-4860	Decal-Safety	1
47	93-7842	Decal-Safety (Japan)	1
47	93-7252	Decal-CE Mark (Europe)	1
48	94-5854	Frame-Adjuster, Bedbar	2
49	3296-48	Nut-Lock	2
50	32148-6	Insert-Threaded	9

* Not Illustrated

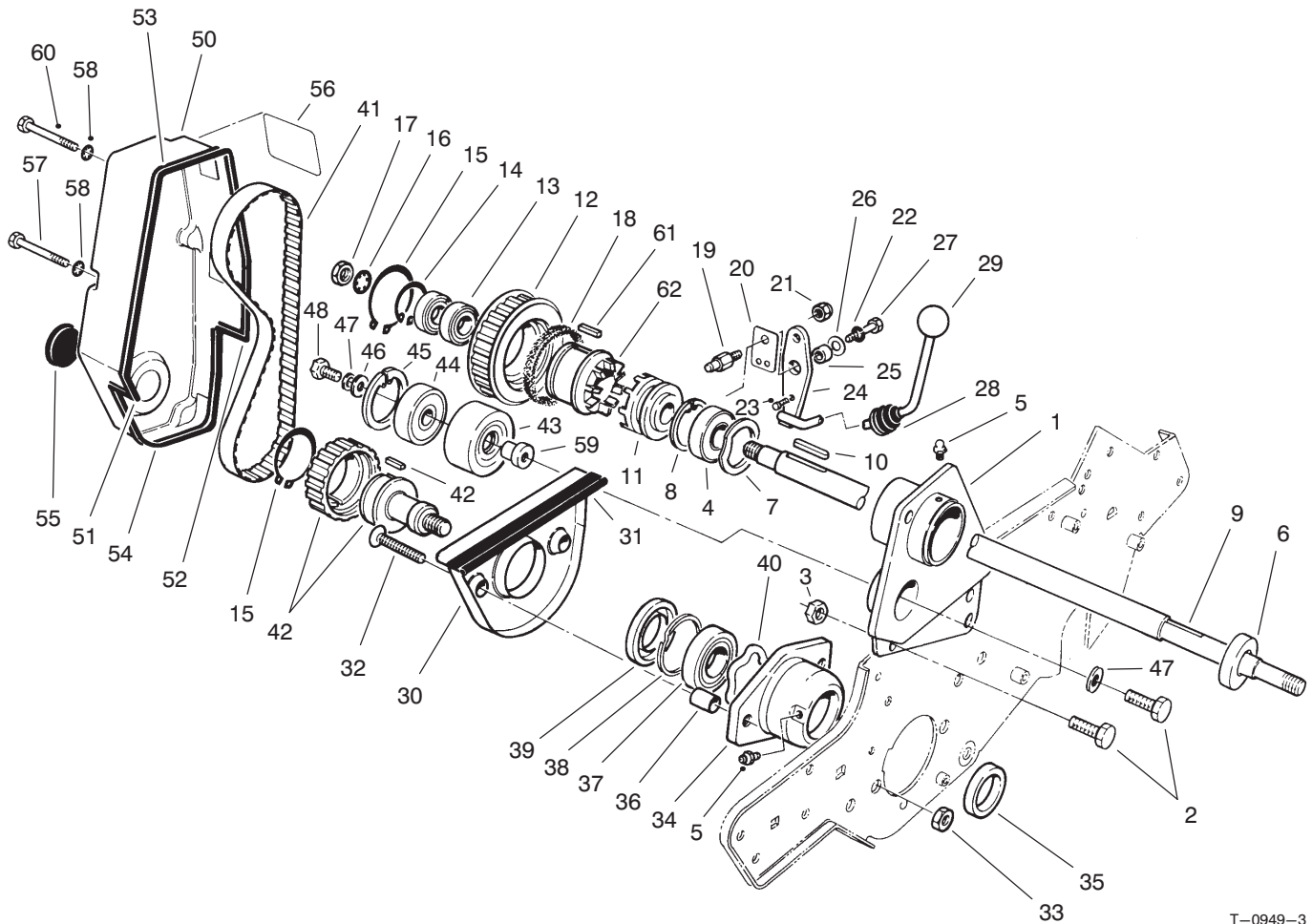


T-0949-3

REEL DRIVE ASM

Ref. No.	Part No.	Description	No. Used
1	92-8013	Housing-Clutch	1
2	322-5	Screw-HH	3
3	3296-29	Nut-Lock	2
4	251-204	Bearing-Ball	1
5	302-5	Fitting-Grease	2
6	253-118	Seal-Oil	1
7	88-7720	Washer-Wave	1
8	32120-11	Ring-Retaining	1
9	93-6056	Shaft-Power	1
10	88-7150	Key-Square	2
11	65-6940	Clutch-Jaw Driver	1
12	65-6960	Pulley-Reel Driven	1
13	251-336	Bearing-Ball	2
14	32151-89	Ring-Retaining	1
15	32151-95	Ring-Retaining	2
16	3254-4	Washer-Lock I.T.L.W.	1
17	3220-5	Nut-Jam	1
18	65-6970	Seal-Felt	1
19	93-9014	Pin-Actuator	1
20	65-6290	Spring-Clutch Detent	1
21	3296-42	Nut-Lock	1
22	3253-3	Washer-Lock	1
23	95-5731	Screw-Drive	1
24	88-7170	Lever-Clutch	1
25	88-7860	Spacer	1
26	3290-414	Washer	1

Ref. No.	Part No.	Description	No. Used
27	321-4	Screw-HH	1
28	65-8960	Boot-Clutch	1
29	233-69	Knob	1
30	65-7190	Cover-Groomer Arm	1
31	65-7131	Trim-Groomer Arm Cover	1
32	3289-23	Screw-FH	2
33	3296-39	Nut	2
34	65-8640	Housing-Bearing	1
35	253-96	Seal	1
36	65-8290	Standoff-Cover	2
37	251-342	Bearing-Self-Aligning	1
38	32151-92	Ring-Retaining	1
39	253-163	Seal	1
40	3290-485	Washer-Wave	1
41	65-6200	Belt-Reel Drive	1
42	88-7840	Asm-Pulley & Drive	1
43	88-7180	Pulley-Idler	1
44	38-7820	Bearing-Ball	1
45	32120-42	Ring-Snap	1
46	88-7200	Washer-Flat	1
47	3253-4	Washer-Lock	2
48	322-3	Screw-HH	1
50	88-7700	Cover-Reel Drive	1
51	88-7770	Strip-Seal Front	1
52	88-7780	Strip-Seal Rear	1
53	88-7790	Strip-Seal Upper	1



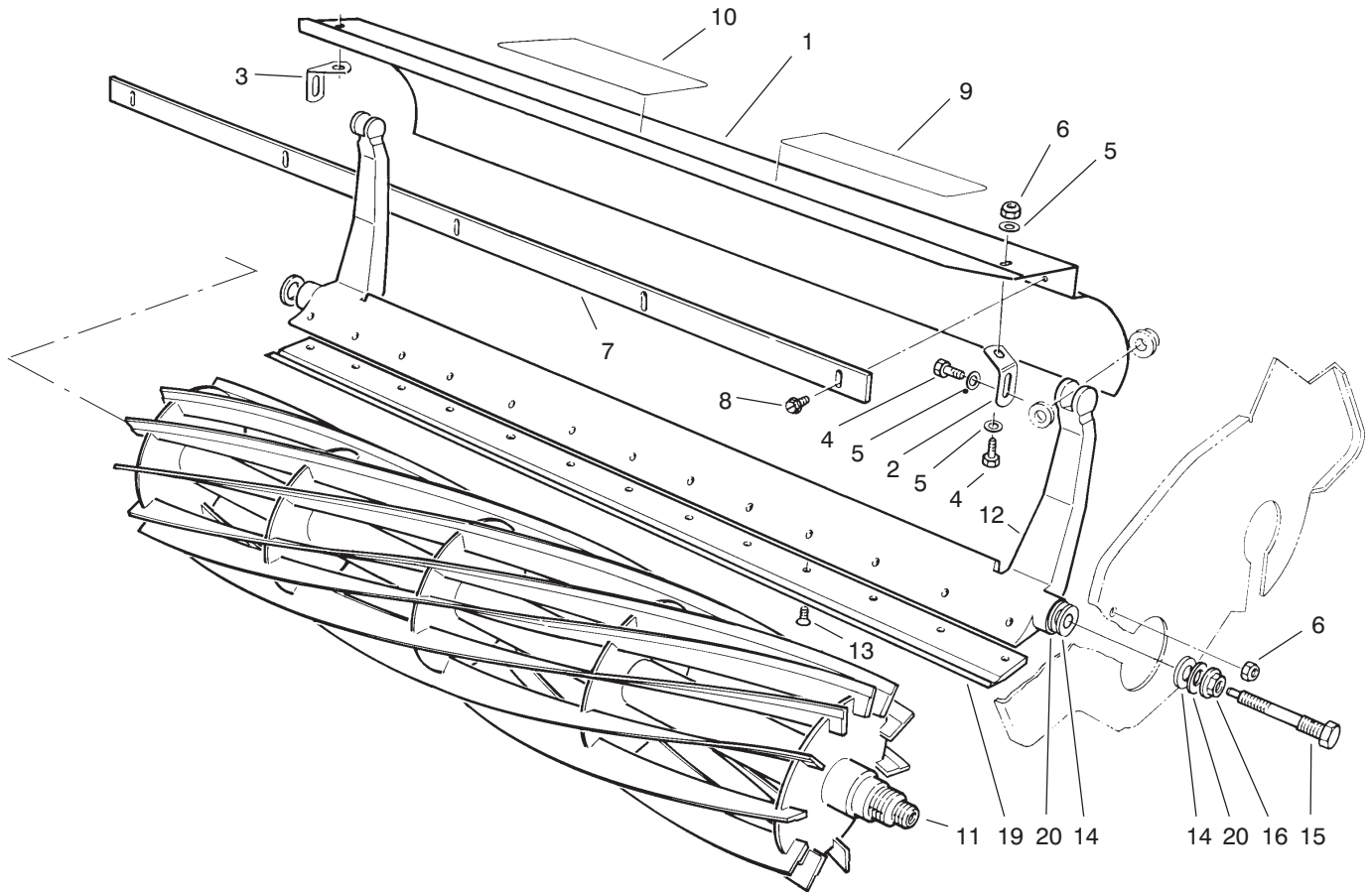
T-0949-3

REEL DRIVE ASM (Continued)

Ref. No.	Part No.	Description	No. Used
54	88-7800	Strip-Seal Lower	1
55	237-160	Plug	1
56	65-7660	Decal-Reel Engagement	1
56	93-7346	Decal-Reel Engagement (Europe)	1
56	92-4817	Decal-Reel Engagement (Japan)	1
57	321-20	Screw-HH	3
58	3254-8	Washer-Lock I.T.L.W.	4

Ref. No.	Part No.	Description	No. Used
59	88-7190	Spacer-Pulley Support	1
60	321-23	Screw-HH	1
61	65-6980	Key	1
62	65-6950	Clutch-Jaw Driven	1
*	88-7850	Asm-Idler Pulley (Incl. Ref. #43-48 & 59)	1
*	88-7830	Asm-Clutch & Pulley (Incl. Ref. #12-15 & 61-62)	1

* Not Illustrated

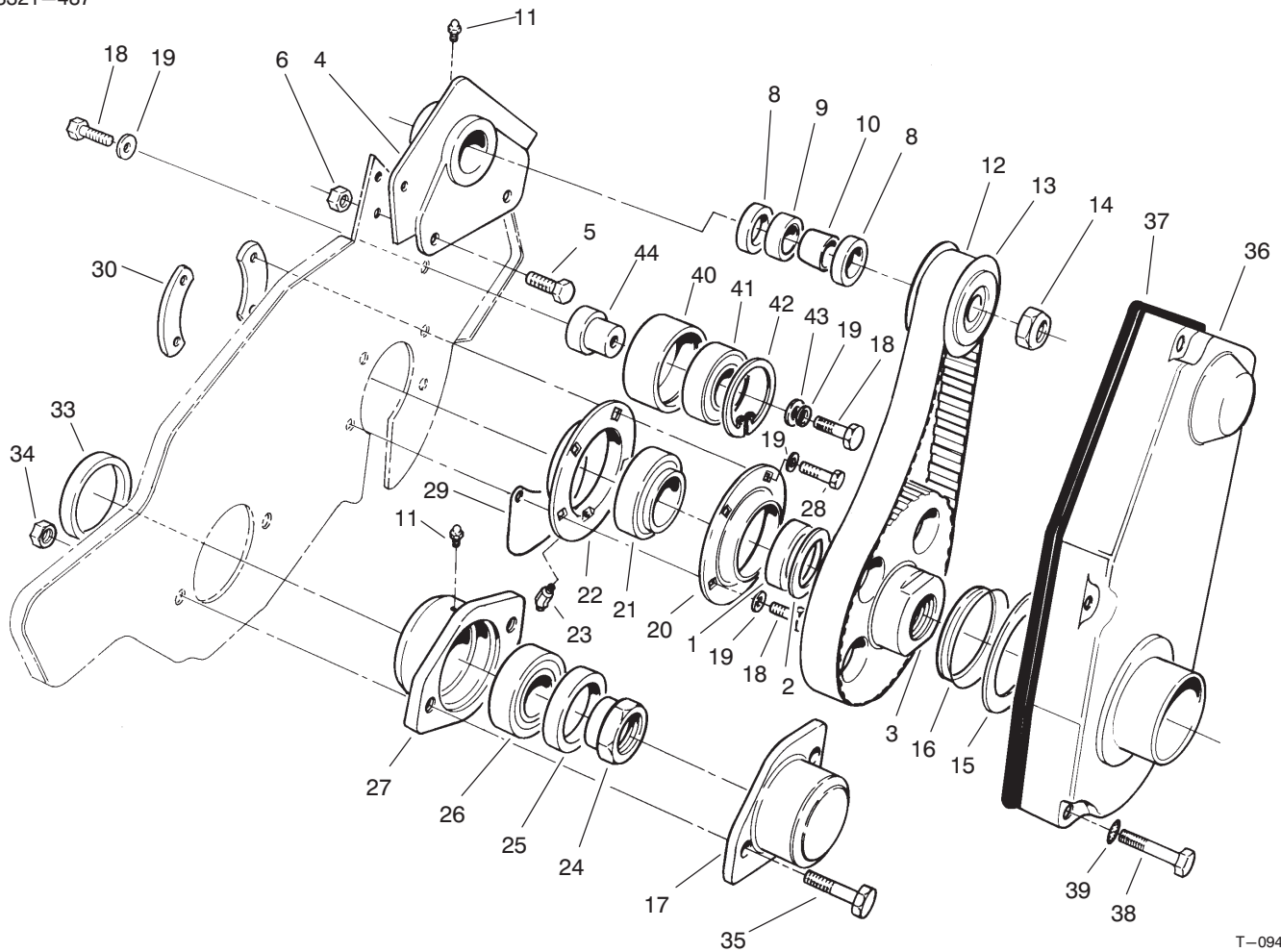


T-0947A

REEL ASM

Ref. No.	Part No.	Description	No. Used	Ref. No.	Part No.	Description	No. Used
1	93-6069	Asm-Grass Shield (Incl. Ref. #9 & 10)	1	10	93-7290	Decal-Service (Portuguese)	1
2	65-6450	Bracket-Shield LH	1	10	93-7291	Decal-Service (Swedish)	1
3	65-6460	Bracket-Shield RH	1	10	93-9391	Decal-Service (French)	1
4	321-3	Screw-HH	4	10	93-9392	Decal-Service (Spanish)	1
5	3256-22	Washer-Flat	6	10	93-9393	Decal-Service (German)	1
6	3296-42	Nut-Lock	4	10	93-9394	Decal-Service (Japan)	1
7	36-7260	Bar-Cutoff	1	11	93-6097	Asm-Reel 11 Blade	1
8	32144-73	Screw-Self Tapping	5	*	93-6087	Asm-Reel 8 Blade	1
9	62-5070	Decal-Warning	1	12	93-6053	Bedbar	1
9	93-8064	Decal-Warning (Europe)	1	13	57-4910	Screw-Special	13
9	84-6560	Decal-Warning (Japan)	1	14	52-2900	Washer-Poly	4
10	93-6098	Decal-Service	1	15	65-6270	Bolt-Bedbar	2
10	93-7285	Decal-Service (Danish)	1	16	32128-48	Nut-Flange	2
10	93-7286	Decal-Service (Dutch)	1	19	93-4264	Bedknife-1/8"	1
10	93-7287	Decal-Service (Finnish)	1	*	93-4263	Bedknife-Tournament	1
10	93-7288	Decal-Service (Italian)	1	*	93-4262	Bedknife-Micro	1
10	93-7289	Decal-Service (Norwegian)	1	20	52-2860	Washer	4

* Not Illustrated



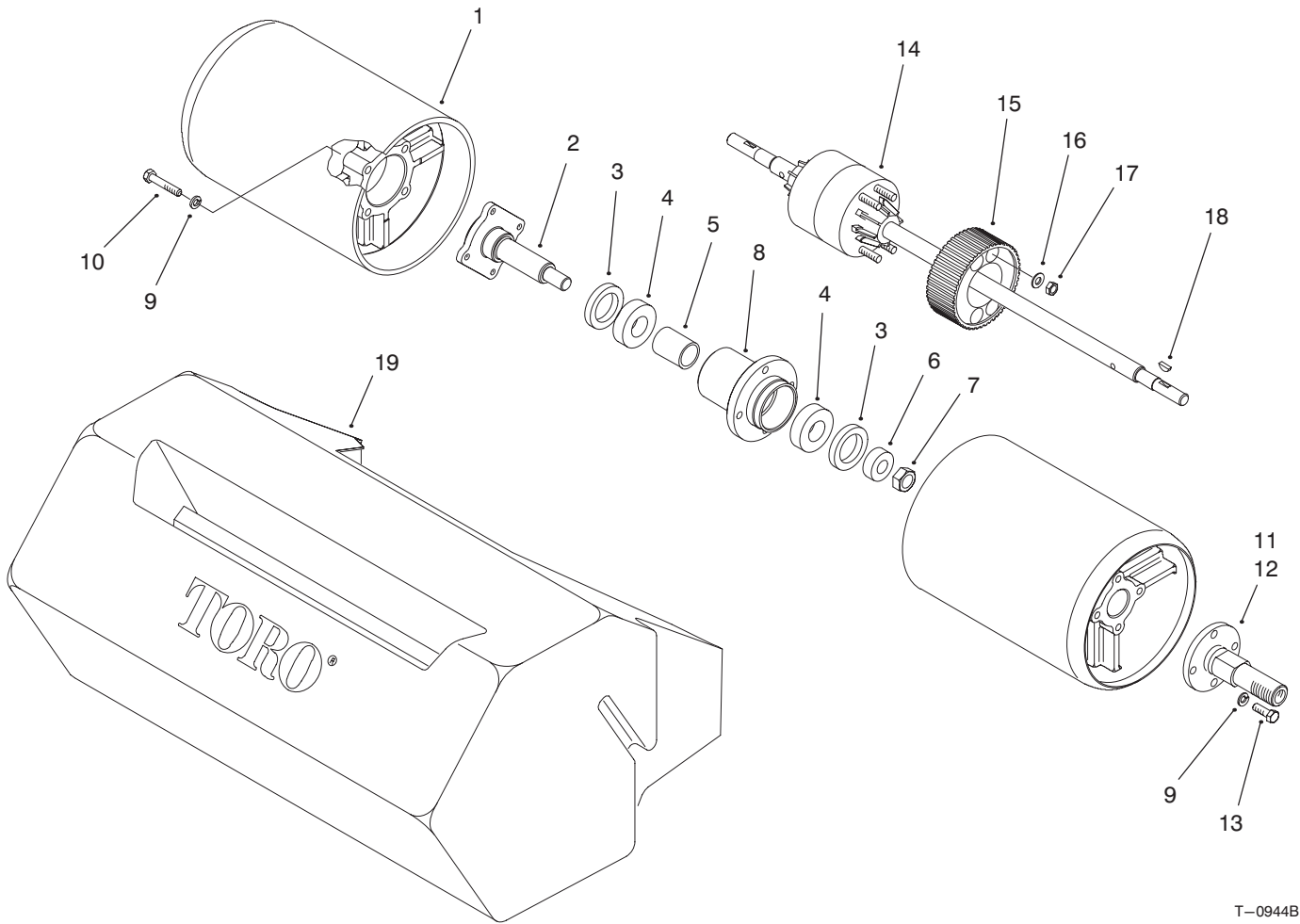
T-0945

DRUM DRIVE ASM

Ref. No.	Part No.	Description	No. Used
1	88-7530	Spacer	2
2	88-7540	Washer-Backup	2
3	94-9017	Pulley-LH	1
*	94-9016	Pulley-RH	1
4	88-7470	Housing-LH	1
*	88-7490	Housing-RH	1
5	322-5	Screw-HH	4
6	3296-29	Nut-Lock	4
8	253-160	Seal	4
9	251-338	Bearing	2
10	86-7130	Spacer	2
11	302-5	Fitting-Grease	3
12	65-6210	Belt	2
13	65-6660	Pulley	2
14	3296-57	Nut	2
15	94-9018	Washer	2
16	253-161	Seal-V-Ring	2
17	65-6220	Cover-Bearing	1
18	322-3	Screw-HH	10
19	3253-4	Washer-Lock	10
20	65-6590	Flangette	2
21	88-7880	Bearing	2
22	95-0923	Flangette	2

Ref. No.	Part No.	Description	No. Used
23	302-40	Fitting-Grease	2
24	92-7302	Nut-Bearing Lock	1
25	253-163	Seal	1
26	251-342	Bearing	1
27	65-8640	Housing-Bearing	1
29	65-8720	Closure	2
30	65-8730	Clamp-Bearing	4
33	253-96	Seal	1
34	3296-39	Nut-Lock	2
35	323-7	Screw-HH	2
36	88-7680	Cover-Drum Belt LH	1
*	88-7690	Cover-Drum Belt RH	1
37	88-7810	Seal Strip-Drum Cover	2
38	321-11	Screw-HH	8
39	3254-8	Washer-Lock I.T.L.W.	8
40	88-7180	Pulley-Idler	1
41	38-7820	Bearing-Ball	2
42	32120-42	Ring-Snap	2
43	88-7200	Washer-Flat	2
44	88-7190	Spacer-Pulley Support	2
*	88-7850	Asm-Idler Pulley (Incl. Ref. #40-44 & 18-19)	2

* Not Illustrated

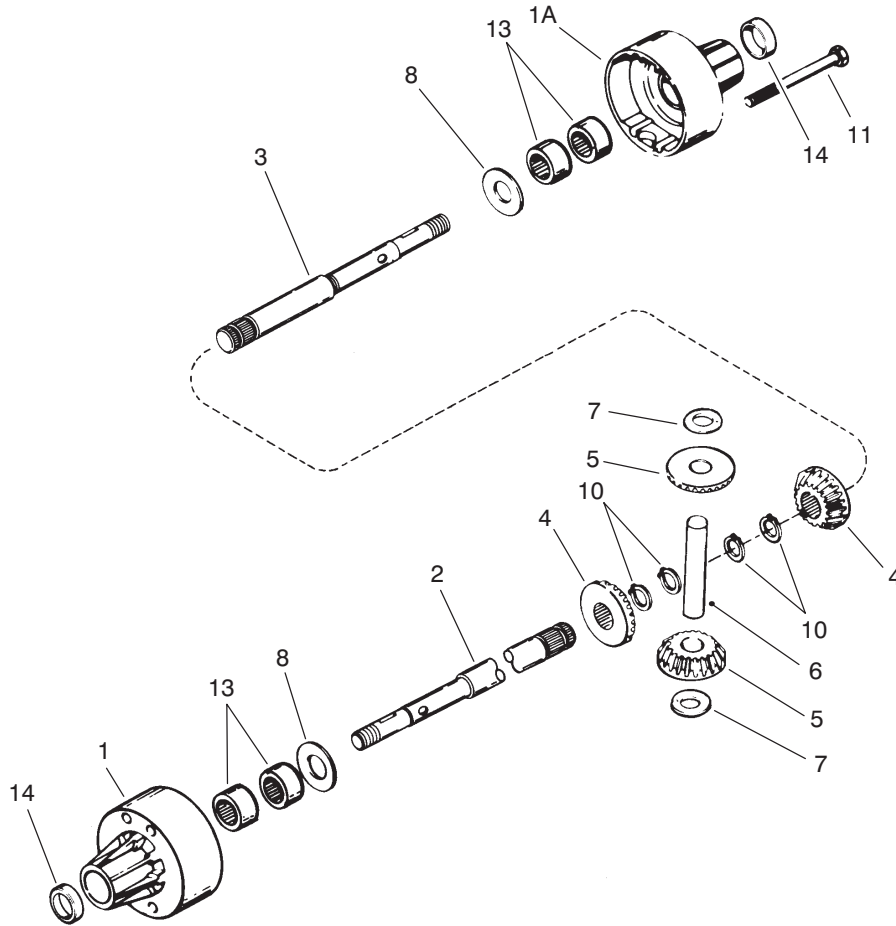


T-0944B

DRUM AND BASKET ASM

Ref. No.	Part No.	Description	No. Used
1	93-9047	Drum	2
2	94-5850	Spindle-Drum	1
3	253-159	Seal-Spring Lip	2
4	251-257	Bearing	2
5	65-6520	Spacer-Bearing	1
6	65-6530	Spacer-Seal	1
7	3296-33	Nut-Lock	1
8	94-5852	Hub-Drum	1
9	3253-4	Washer-Lock	16
10	322-9	Screw-HH	8

Ref. No.	Part No.	Description	No. Used
11	88-7520	Shaft-Drum LH	1
12	88-7510	Shaft-Drum RH	1
13	322-5	Screw-HH	8
14	93-6055	Asm-Differential Peerless Model 100-111	1
15	65-9120	Pulley-Differential	1
16	3256-23	Washer-Flat	4
17	3296-29	Nut-Lock	4
18	3257-30	Key-Woodruff	2
19	65-7230	Basket-Grass	1



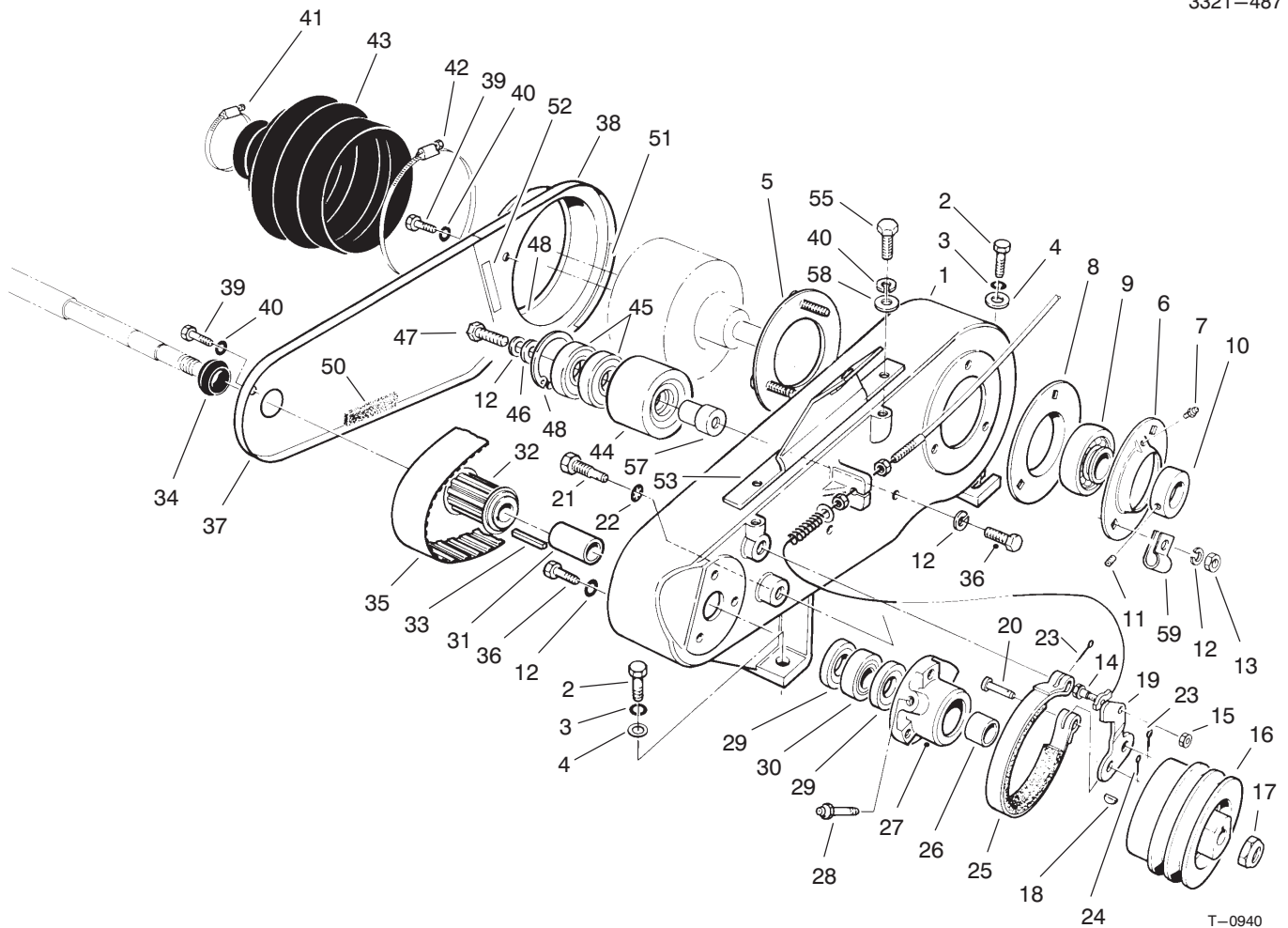
T-1571

DIFFERENTIAL ASM PEERLESS MODEL NO. 100-111

Ref. No.	Part No.	Description	No. Used
1	95-5741	Housing-Differential Carrier (Incl. Ref. #13 & 14)	1
1A	95-5740	Housing-Differential Carrier (Incl. Ref. #13 & 14)	1
2	95-5736	Axle (20-17/32" Long)	1
3	95-5735	Axle (6-19/32" Long)	1
4	95-5749	Gear Bevel	2
5	95-5748	Gear Pinion	2
6	95-5747	Pin Drive	1

Ref. No.	Part No.	Description	No. Used
7	95-5744	Washer Thrust	2
8	95-5745	Washer	2
10	95-5746	Ring-Retaining (Pkg. of 2)	4
11	95-5739	Screw Flanged Hex Hd.	4
13	95-5738	Bearing Needle	4
14	95-5737	Seal Oil	2
*	95-5734	Betonite Grease 32 oz. Bottle	1

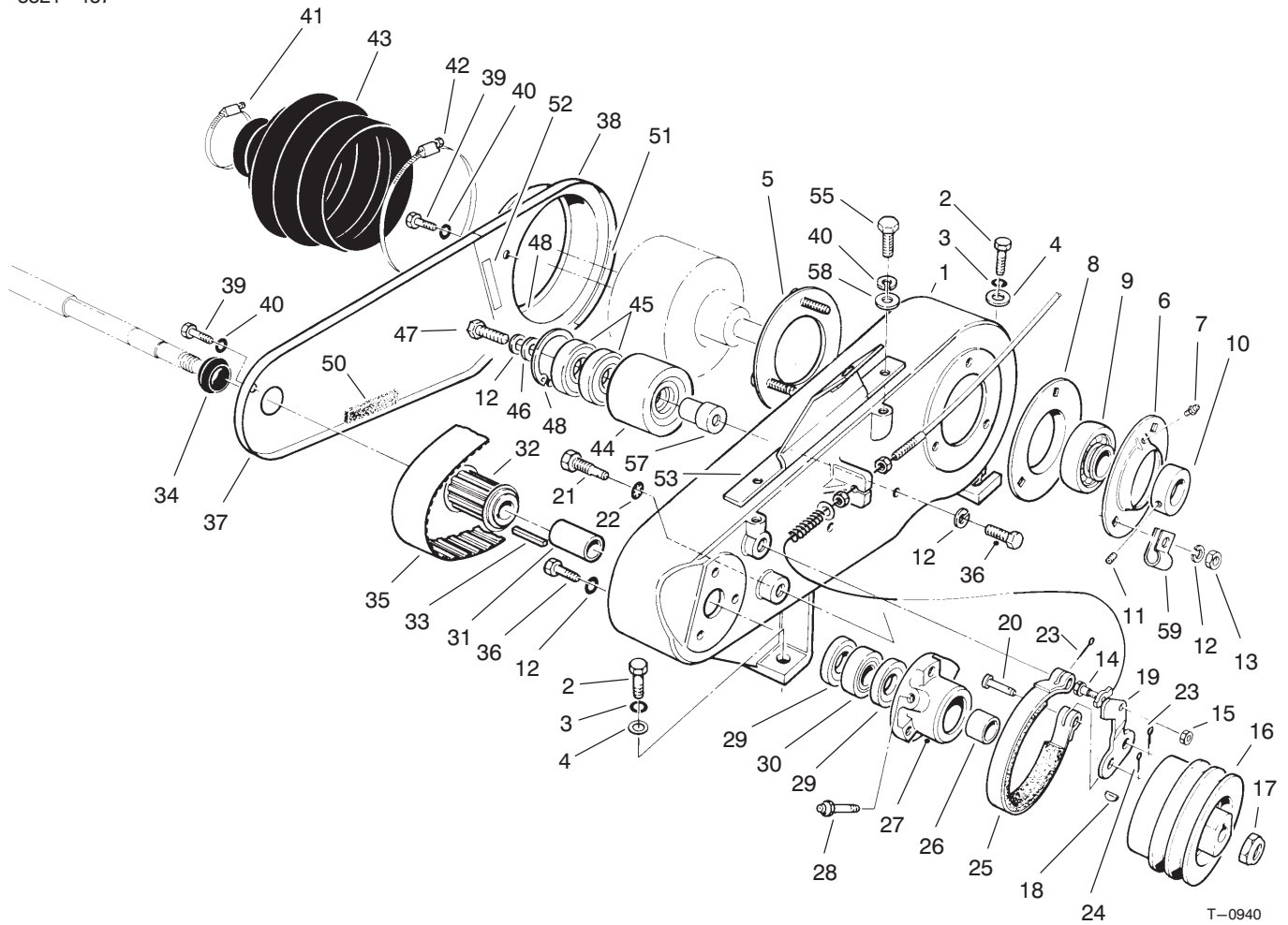
* Not Illustrated



COUNTERSHAFT ASM

Ref. No.	Part No.	Description	No. Used	Ref. No.	Part No.	Description	No. Used
1	88-7230	Housing-Countershaft	1	26	86-7130	Spacer-Short	1
2	323-5	Screw-HH	4	27	65-6760	Housing-Bearing	1
3	3253-21	Washer-Lock	4	28	302-64	Fitting-Grease	1
4	3256-24	Washer-Flat	4	29	253-160	Seal	2
5	65-6720	Plate-Screw	1	30	251-338	Bearing	1
6	65-6700	Flangette	1	31	86-7140	Spacer-Long	1
7	302-55	Fitting-Grease	1	32	65-8910	Pulley-Countershaft	1
8	65-6710	Flangette	1	33	65-6850	Key	1
9	251-343	Bearing (Incl. Ref. #10 & 11)	1	34	88-7710	Seal-Countershaft	1
10		Collar-Locking	1	35	65-9080	Belt	1
11		Screw-Set	2	36	322-5	Screw-HH	4
12	3253-4	Washer-Lock	8	37	88-7240	Cover-Box Front	1
13	3218-2	Nut-Jam	3	38	88-7250	Cover-Box Rear	1
14	11-9030	Bolt-Shoulder	1	39	321-2	Screw-HH	3
15	3296-42	Nut-Lock	1	40	3253-3	Washer-Lock	5
16	92-9212	Pulley-Input Shaft	1	41	2412-139	Clamp-Hose	1
17	3296-57	Nut-Lock	1	42	2412-140	Clamp-Hose	1
18	3257-30	Key	1	43	65-6800	Boot-Differential	1
19	65-8610	Lever-Brake	1	44	88-7370	Pulley-Idler	1
20	283-75	Pin-Clevis	1	45	38-7820	Bearing-Ball	2
21	65-6810	Support-Brake	2	46	88-7200	Washer-Flat	1
22	3254-6	Washer-Lock I.T.L.W.	2	47	322-3	Screw-HH	1
23	3272-6	Pin-Cotter	2	48	32120-42	Ring-Retaining	1
24	3272-8	Pin-Cotter	1	50	65-6901	Strip-Cover Seal	1
25	65-8700	Band-Brake	1	*	88-7870	Asm-Idler Pulley (Incl. Ref. #12, 44-48 & 57)	1

* Not Illustrated

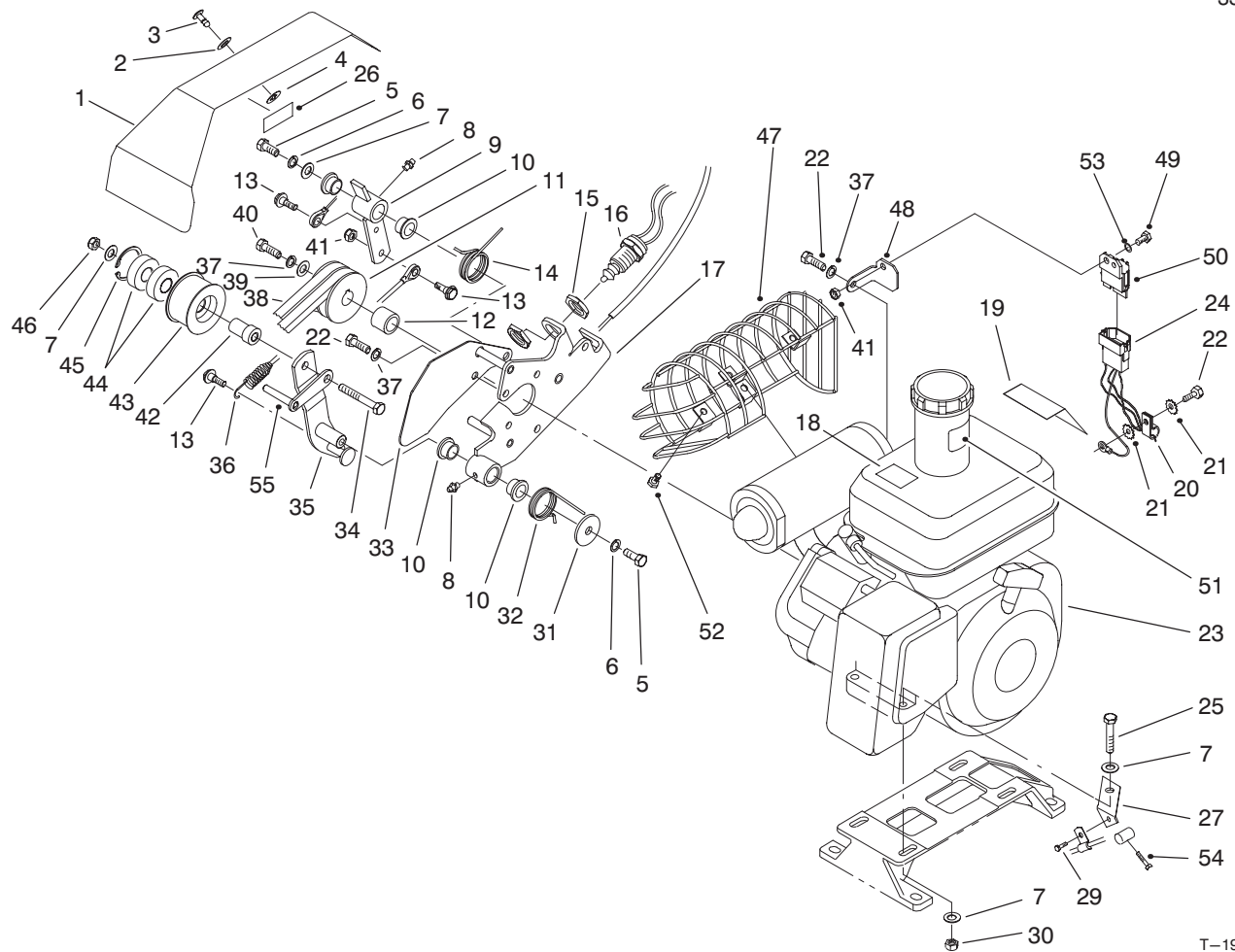


T-0940

COUNTERSHAFT ASM (Continued)

Ref. No.	Part No.	Description	No. Used
51	65-6902	Strip-Cover Seal	1
52	65-6903	Strip-Cover Seal	1
53	93-1448	Cover Bracket	1
55	321-3	Screw-HH	2

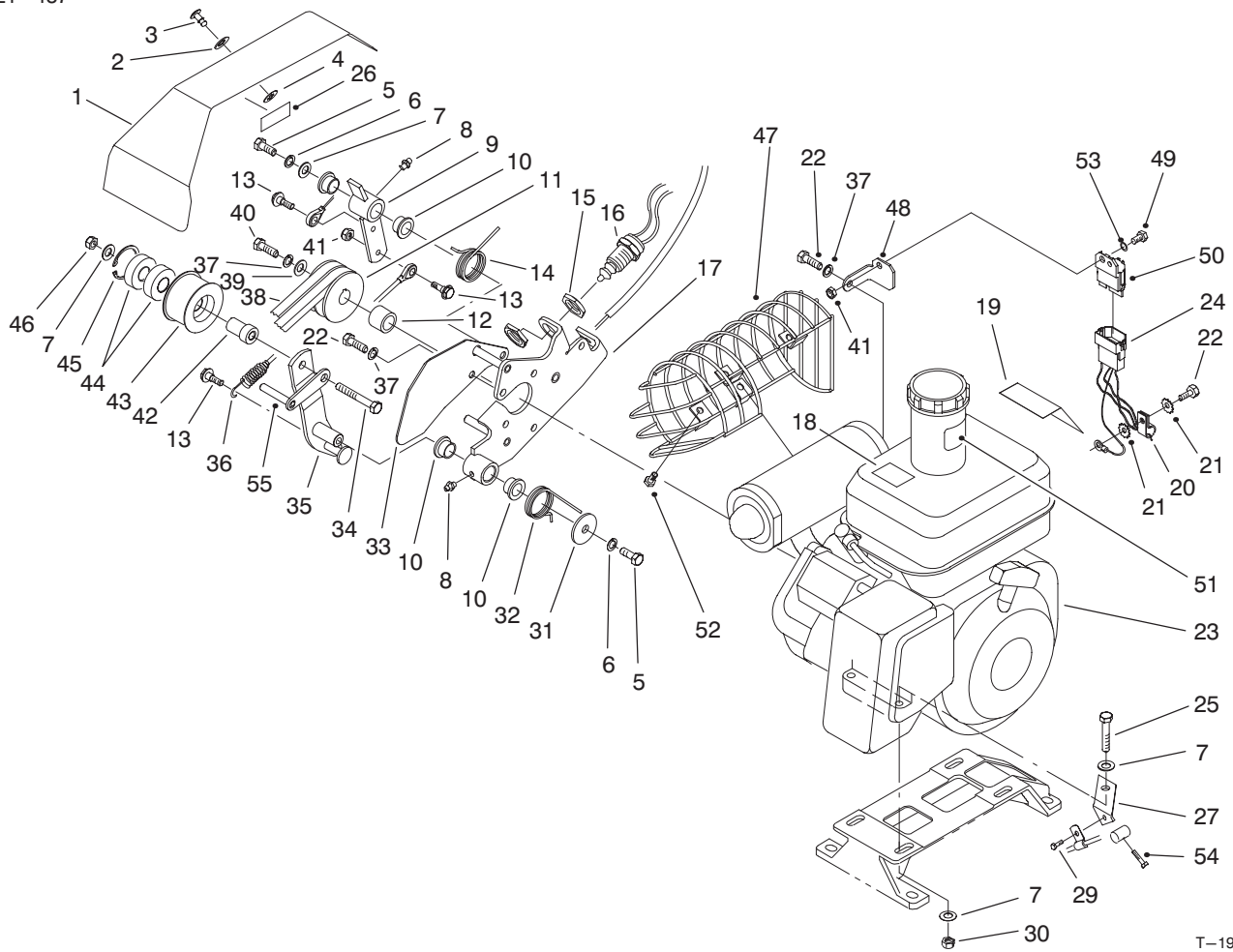
Ref. No.	Part No.	Description	No. Used
57	88-7380	Spacer-Pulley Support	1
58	3256-22	Washer-Flat	2
59	88-7970	Clip	1



T-1996-7

ENGINE AND BELLCRANK ASM

Ref. No.	Part No.	Description	No. Used	Ref. No.	Part No.	Description	No. Used
1	94-9007	Cover-Bellcrank (Incl. Ref. #26)	1	22	33114-016	Screw-HH	7
2	3256-2	Washer-Flat	1	23	94-9003	Asm-Engine Kawasaki Model FE120G-DS00 (Incl. Ref. #18-19 & 51)	1
3	93-6074	Stud	1	24	94-5862	Harness-Wire	1
4	93-6073	Retainer	1	24	94-5865	Harness-Wire (Europe)	1
5	323-4	Screw-HH	2	25	322-9	Screw-HH	4
6	3253-21	Washer-Spring Lock	2	26	67-5360	Decal-Danger	1
7	3256-56	Washer-Flat	10	26	93-7273	Decal-Danger (Europe)	1
8	302-5	Fitting-Grease	2	26	84-7280	Decal-Danger (Japan)	1
9	93-6014	Lever	1	27	88-7960	Bracket-Throttle Cable	1
10	65-8770	Bushing	4	29	32144-73	Screw-HWHTF	1
11	92-9216	Pulley-Input Drive	1	30	3296-29	Nut-Lock	4
12	65-8260	Spacer-Engine Shaft	1	31	93-6099	Washer	1
13	11-9030	Bolt-Shoulder	3	32	93-6012	Spring-Torsion, Clutch	1
14	93-6011	Spring-Torsion	1	33	93-6013	Shield-Belt	1
15	3218-20	Nut-Jam	2	34	323-11	Screw-HH	1
16	87-5490	Switch (Incl. Ref. #15)	1	35	93-6003	Lever-Clutch	1
17	93-6015	Bracket-Clutch	1	36	93-9024	Asm-Cable, Link	1
18	63-8440	Decal-Hot	1	37	3253-4	Washer-Spring Lock	7
18	93-8069	Decal-Hot (Europe)	1	38	92-9218	V-Belt, Matched Set	1
18	83-2560	Decal-Hot (Japan)	1	39	65-8270	Washer	1
19	88-7620	Decal-Danger	1	40	33114-025	Screw-HH	1
19	93-7348	Decal-Danger (Europe)	1	41	3296-42	Nut-Lock	4
19	92-4813	Decal-Danger (Japan)	1	42	88-7350	Bushing	1
20	2412-93	Clamp-R	1				
21	3255-9	Washer-External Lock	2				



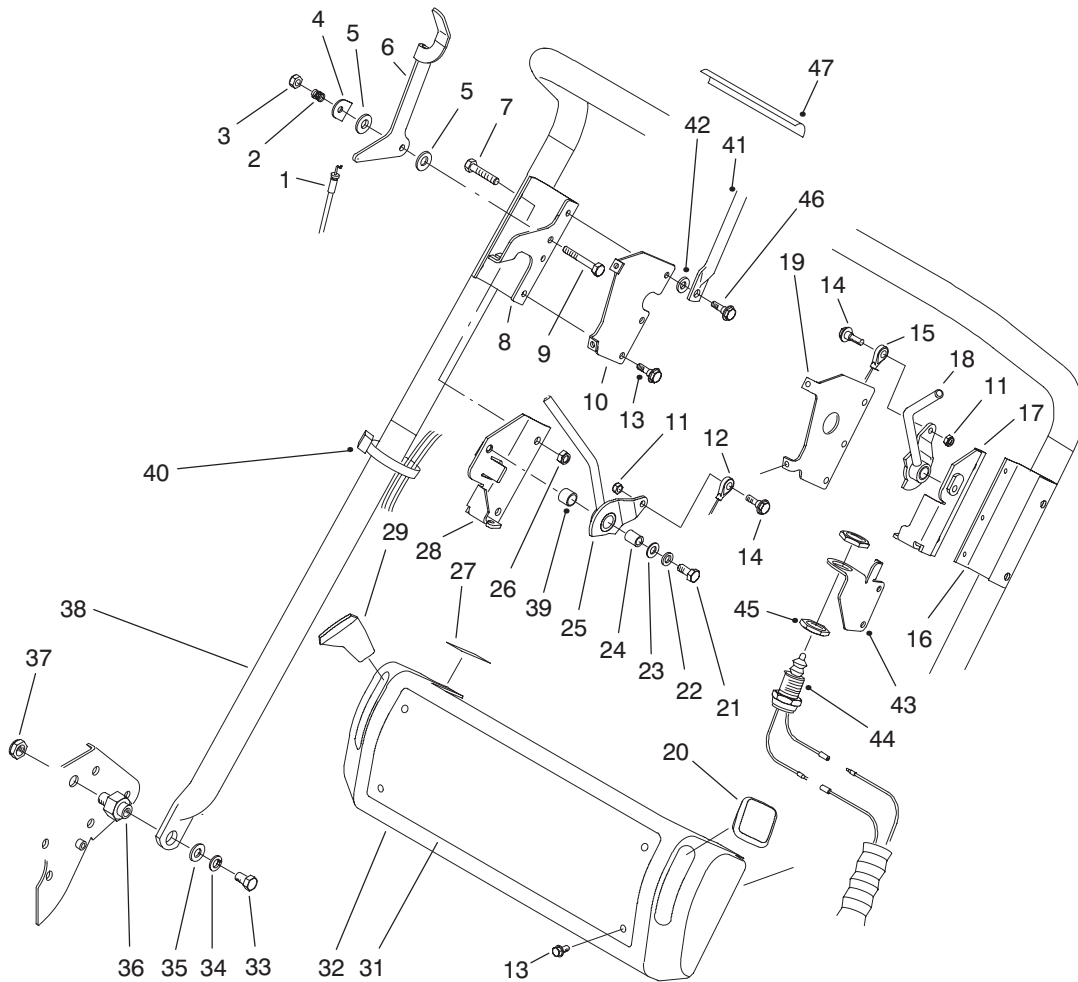
T-1996-7

ENGINE AND BELLCRANK ASM (Continued)

Ref. No.	Part No.	Description	No. Used
43	98-7297	Pulley-Idler	1
44	38-7820	Bearing-Ball	2
45	32120-42	Ring-Retaining	1
46	3296-39	Nut-Lock	1
47	93-6092	Guard-Muffler (Europe)	1
48	94-5861	Bracket-Module	1
49	321-3	Screw-HH	1
50	94-5860	Module-Interlock	1
50	94-3431	Module-Interlock (Europe)	1

Ref. No.	Part No.	Description	No. Used
51	53-4420	Decal-Fuel	1
51	93-9886	Decal-Fuel (Europe)	1
51	93-9886	Decal-Fuel (Japan)	1
52	33113-012	Screw-HH (Europe)	4
53	3256-22	Washer-Flat	1
54	94-9015	Screw-HH	1
55	95-0922	Guide-Belt	1
*	98-7296	Asm-Idler Pulley (Incl. Ref. #42-45)	1

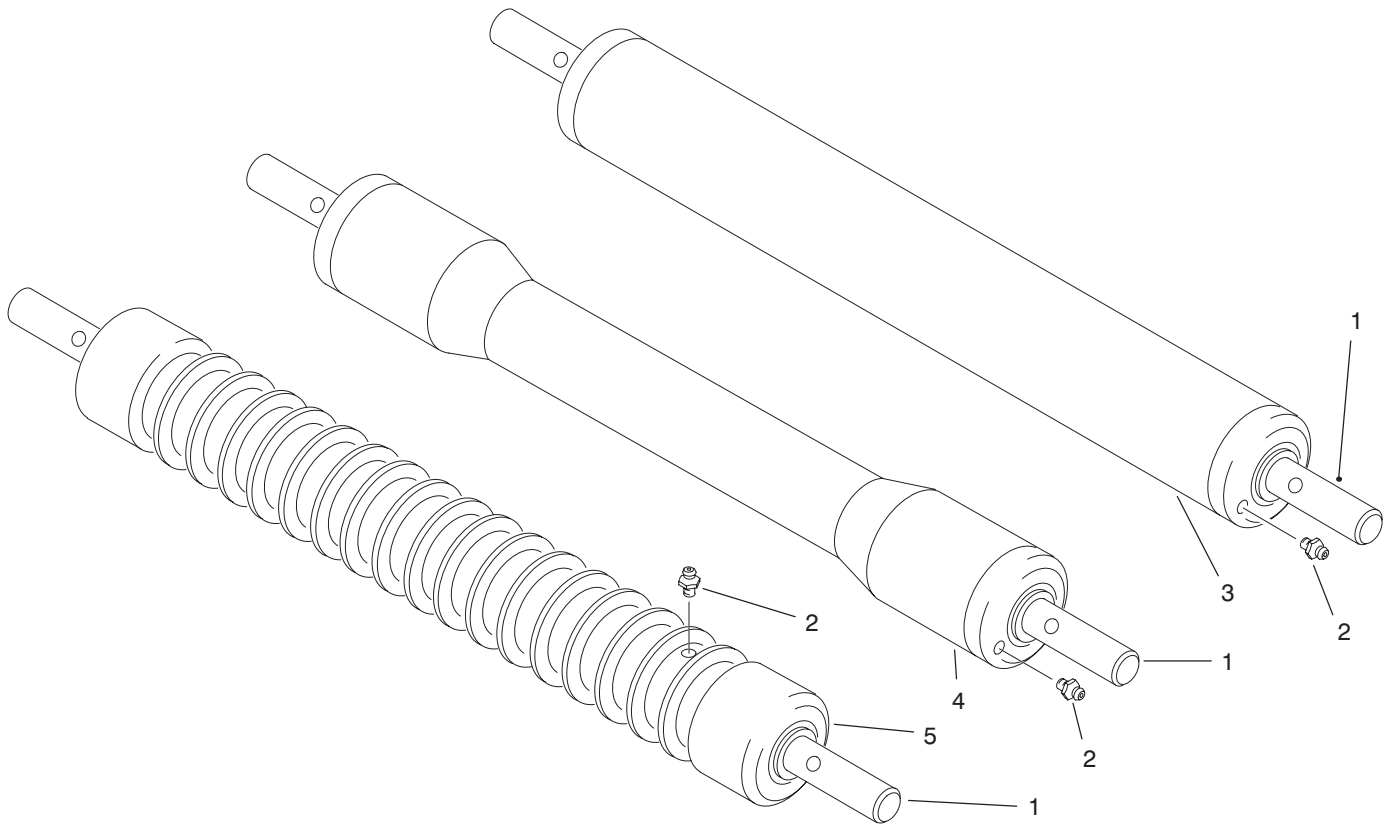
* Not Illustrated



T-1997-2

HANDLE ASM

Ref. No.	Part No.	Description	No. Used	Ref. No.	Part No.	Description	No. Used
1	93-9023	Cable-Throttle	1	26	3296-29	Nut-Lock	4
2	3-5787	Spring	1	27	93-6085	Decal-Throttle	1
3	3296-56	Nut-Lock	1	28	93-6019	Bracket-Clutch	1
4	93-6016	Washer-Retaining	1	29	65-8970	Knob-Black	1
5	66-2921	Washer-Friction	2	31	93-6084	Decal-Console	1
6	93-6017	Lever-Throttle	1	31	93-7347	Decal-Console (Europe)	1
7	322-9	Screw-HH	4	31	94-6312	Decal-Console (Japan)	1
8	95-0908	Bracket-Skid, Clutch	1	32	93-6036	Console	1
9	321-8	Screw-HH	1	33	323-34	Screw-HH	2
10	93-6046	Bracket-Console RH	1	34	3253-21	Washer-Spring Lock	2
11	3296-42	Nut-Lock	2	35	3256-24	Washer-Flat	2
12	93-6081	Cable-Clutch	1	36	93-6000	Pin-Handle Pivot	2
13	93-6083	Screw	10	37	3296-28	Nut-Lock Insert	2
14	11-9030	Bolt-Shoulder	2	38	93-6001	Handle	1
15	93-6082	Cable-Brake	1	39	256-206	Bushing	2
16	95-0907	Bracket-Skid, Brake	1	40	3290-378	Tie-Cable	4
17	93-6022	Bracket-Brake	1	41	93-9009	Asm-Bail (Europe) (Incl. Ref. #47)	1
18	93-6058	Lever-Brake	1	42	93-6079	Spacer (Europe)	2
19	93-6047	Bracket-Console LH	1	43	93-6078	Bracket-Switch (Europe)	1
20	65-8971	Knob-Red	1	44	87-5490	Switch (Europe) (Incl. Ref. #45)	1
21	3210-7	Screw-HH	2	45	3218-20	Nut-Jam (Europe)	2
22	3253-4	Washer-Spring Lock	2	46	11-9030	Bolt-Shoulder (Europe)	4
23	3256-23	Washer-Flat	2	47	93-9008	Decal-Bail	1
24	88-7450	Spacer	2				
25	95-5715	Lever-Clutch (Incl. Ref. #39)	1				



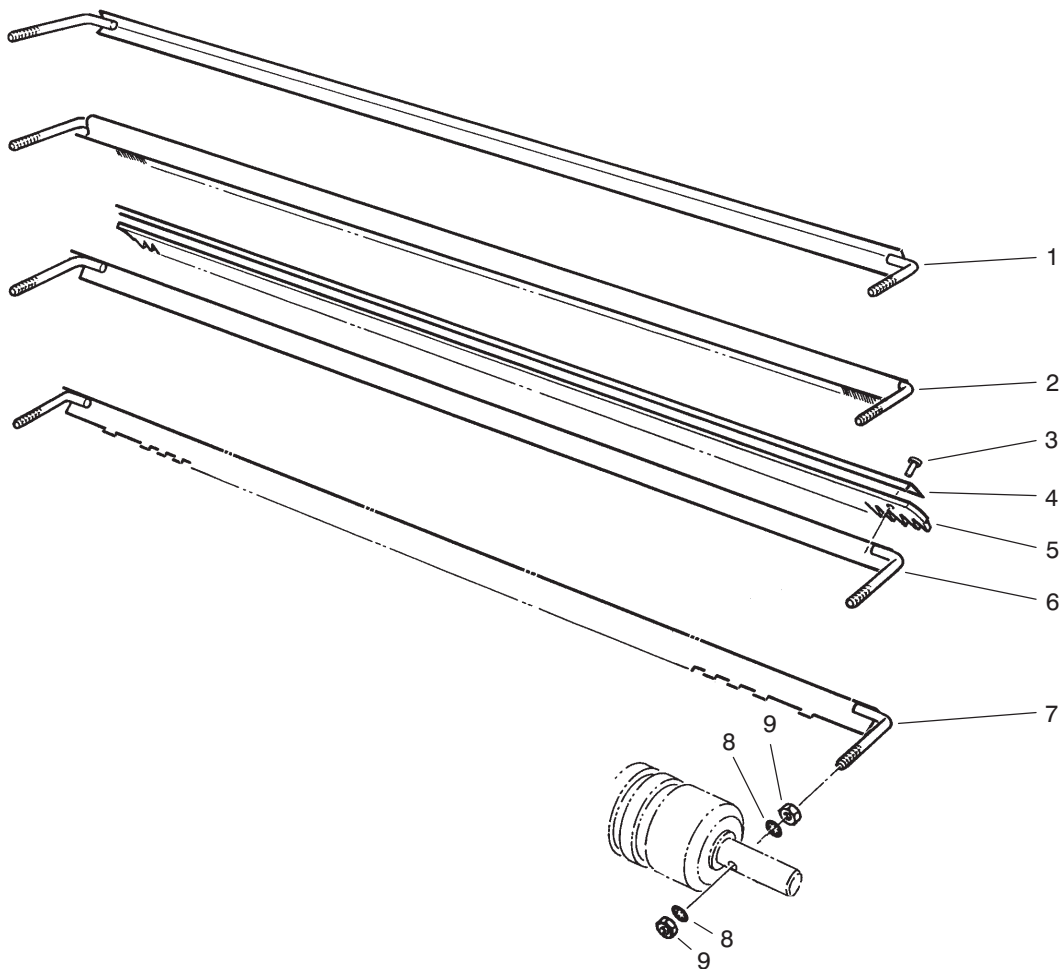
T-0956A

CUTTING UNIT ROLLER OPTIONS

Ref. No.	Part No.	Description	No. Used
1	52-3180	Bearing-Roller	2
2	302-5	Fitting-Grease	2
3	52-3170	Asm-Roller (Incl. Ref. #1 & 2)	1
4	52-3590	Asm-Swaged Roller (Incl. Ref. #1 & 2)	1

Ref. No.	Part No.	Description	No. Used
5	71-1550	Asm-Wiehle Roller 2.00" Dia. (5.08 cm) Cast Iron (Incl. Ref. #1 & 2)	1
*	93-9045	Asm-Wiehle Roller 2.50" Dia. (6.35 cm) Aluminum (Incl. Ref. #1 & 2)	1

* Not Illustrated



T-1998

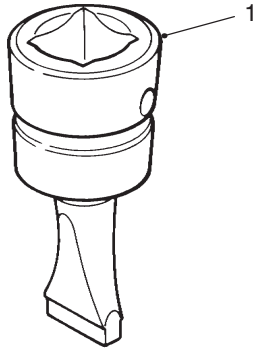
SCRAPER OPTIONS

Ref. No.	Part No.	Description	No. Used
1	65-8360	Scraper-Smooth	1
2	33-1000	Scraper-Brush	1
3	3295-15	Rivet	11
4	8-2520	Support-Comb	1
5	8-2530	Comb-Urethane	1

Ref. No.	Part No.	Description	No. Used
6	11-0070	Asm-Comb, Scraper (Incl. Ref. #3-5)	1
7	65-8340	Scraper-Wiehle Roller	1
8	3254-8	Washer-Lock I.T.L.W.	4
9	3219-1	Nut-Hex.	4

SPECIAL TOOLS

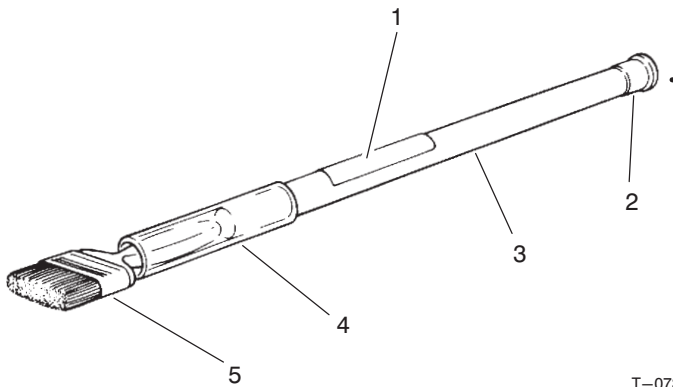
BEDKNIFE SCREW TOOL NO. *TOR510880



T-0729

Ref. No.	Part No.	Description	No. Used
1		Tool-Bedknife Screw	1

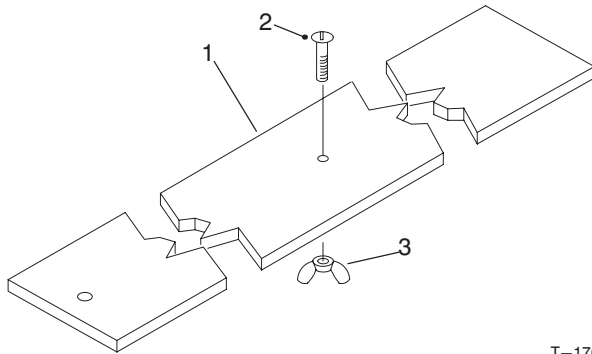
BACKLAPPING BRUSH ASSEMBLY NO. *TOR299100



T-0731

Ref. No.	Part No.	Description	No. Used
1	12-9140	Decal	1
2	2410-18	Plug	1
3	29-9080	Handle	1
4	29-9090	Hose-Handle	1
5	36-4310	Brush	1

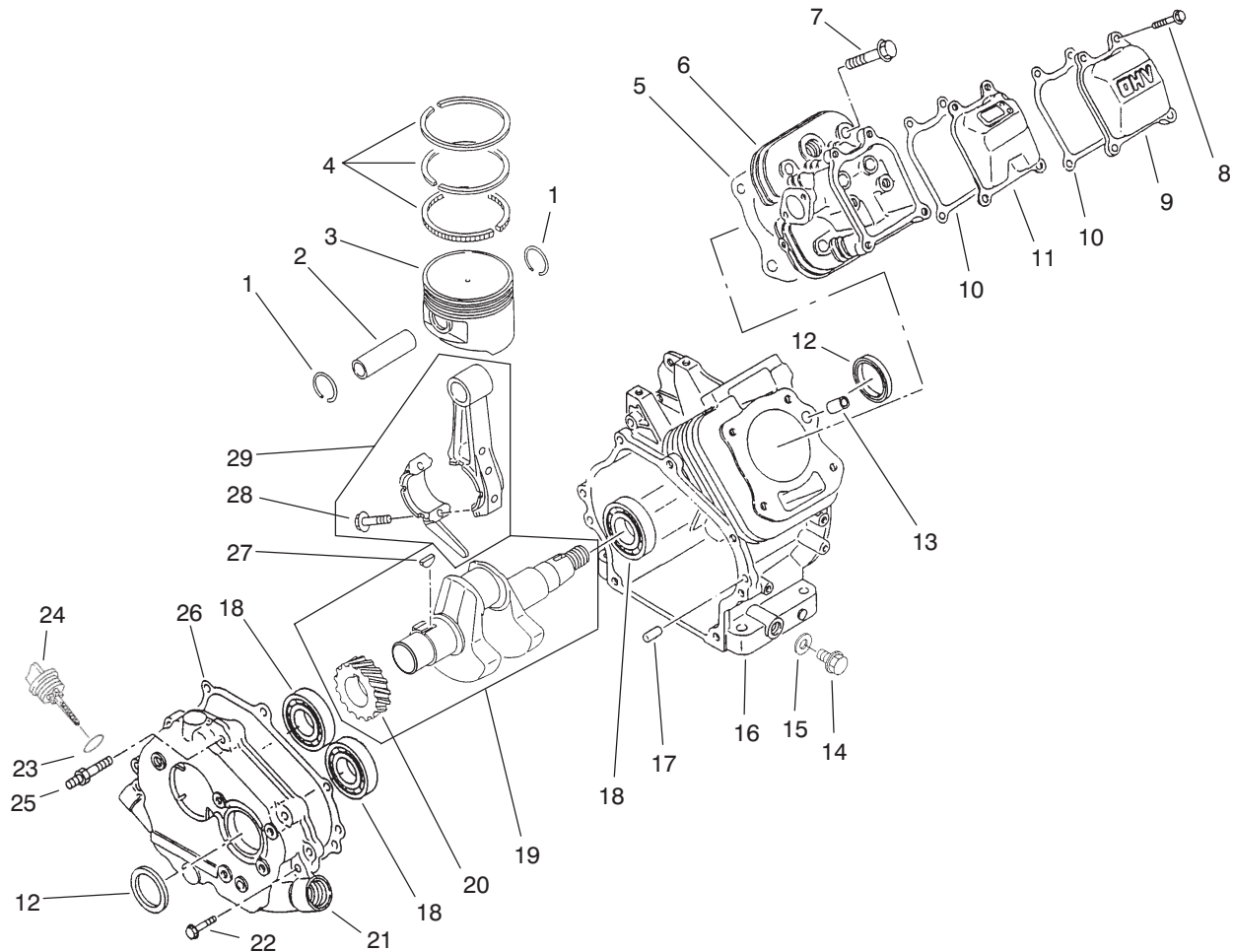
HEIGHT-OF-CUT BAR ASSEMBLY NO. 94-9010



T-1763-3

Ref. No.	Part No.	Description	No. Used
1	94-9011	Bar	1
2	32122-36	Screw-Slotted Truss Hd.	1
3	32103-2	Nut-Wing	1

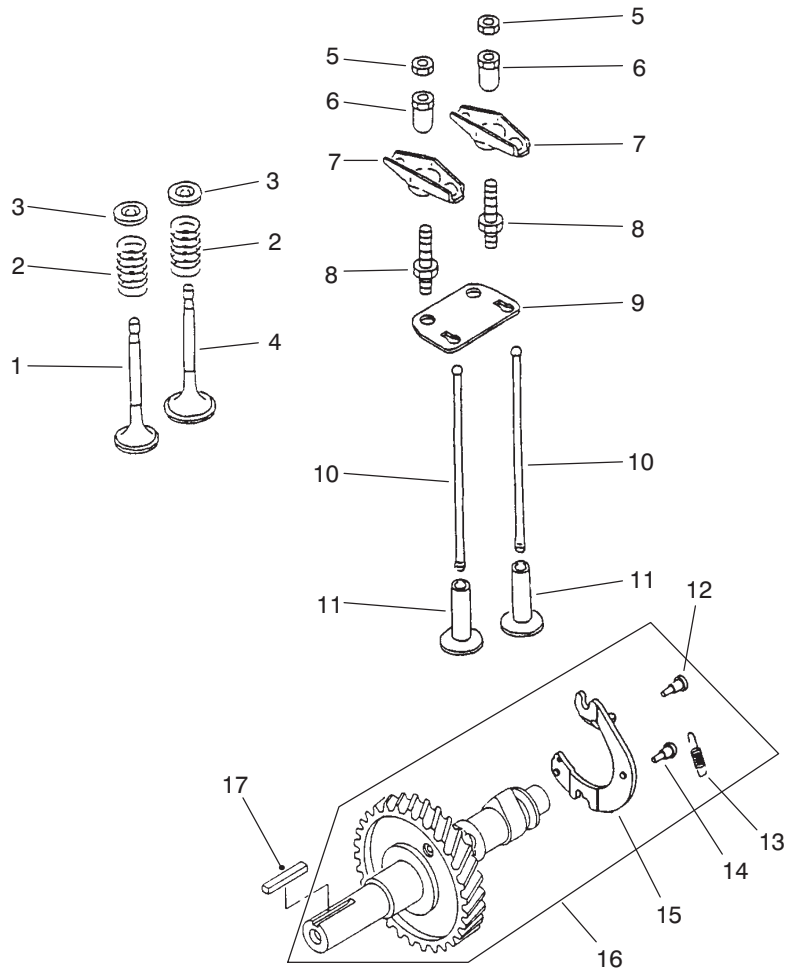
*Obtain these items directly from OTC 2013 4th St. Owatonna, MN. 55060 1-800-533-0492
(in Minnesota and Canada 1-507-455-7050) Fax. 507-455-7011.



T-1623

ENGINE CRANKCASE ASM

Ref. No.	Part No.	Description	No. Used	Ref. No.	Part No.	Description	No. Used
1	93-8500	Ring—Retaining	2	16	93-8515	Crankcase	1
2	93-8501	Pin—Piston	1	17	93-8516	Pin	2
3	93-8502	Piston	1	18	93-8517	Bearing—Ball	3
*	94-6836	Piston (Oversized)	1	19	93-8518	Asm—Crankshaft (Incl. Ref. #20 & 27)	1
4	93-8503	Piston Ring Set	1	20	94-9043	Gear—Helical	1
*	94-6837	Piston Ring Set (Oversized)	1	21	93-8520	Cover—Crankcase	1
5	93-8504	Gasket—Head	1	22	93-8521	Bolt—Flanged	7
6	93-8505	Head—Cylinder	1	23	94-9041	Seal—O—Ring	2
7	93-8506	Bolt—Flanged	4	24	93-8523	Cap—Oil Filler	2
8	94-6838	Bolt—Flanged	4	25	93-8524	Stud	1
9	93-8508	Case—Rocker	1	26	93-8525	Gasket—Crankcase	1
10	93-8509	Gasket—Rocker	2	27	93-8526	Key	1
11	93-8510	Breather	1	28	93-8527	Bolt—Rod	2
12	93-8511	Seal—Oil	2	29	93-8528	Asm—Connecting Rod (Incl. Ref. #28)	1
13	93-8512	Pin	2				
14	93-8513	Plug—Drain	2				
15	93-8514	Gasket—Drain Plug	2				

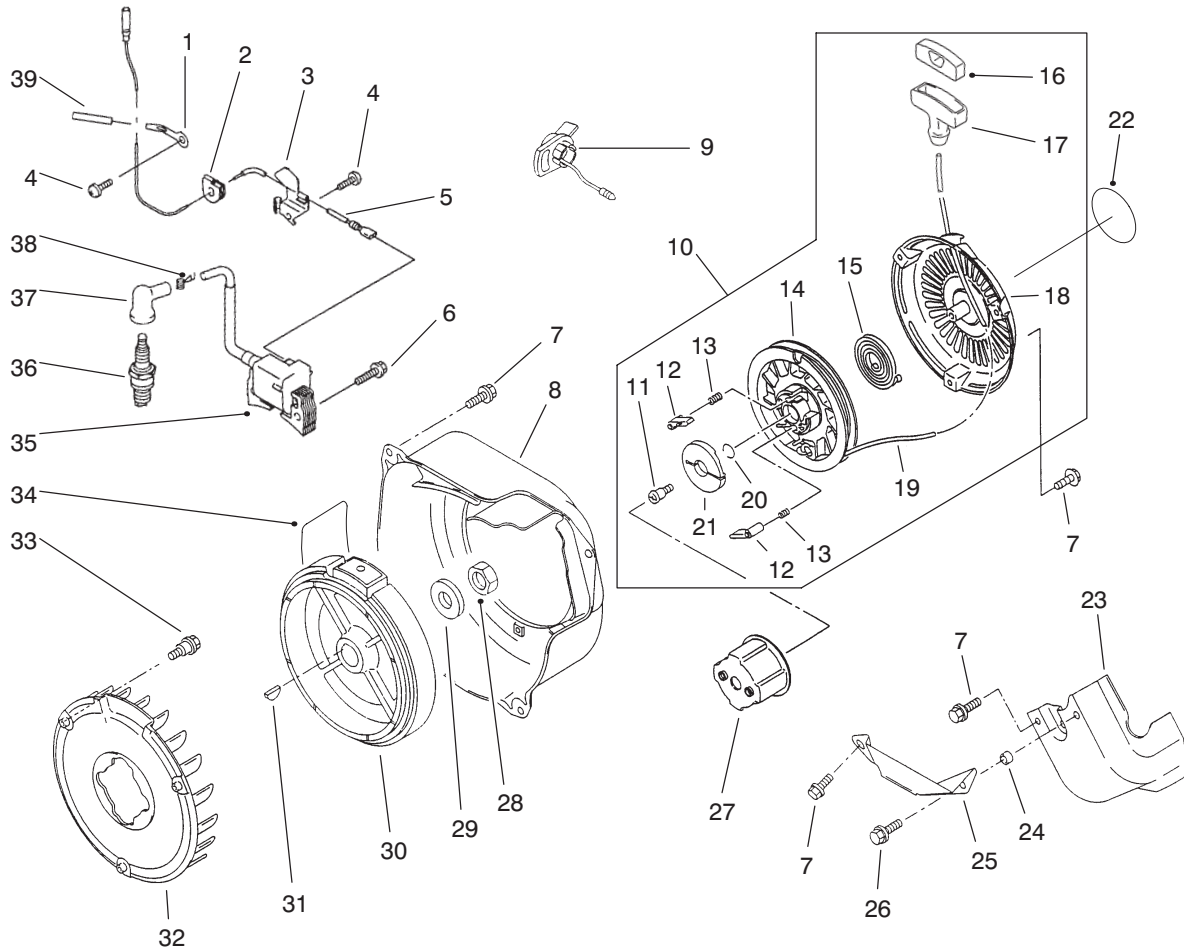


T-1624

ENGINE CAMSHAFT & VALVES ASM

Ref. No.	Part No.	Description	No. Used
1	93-8529	Valve-Exhaust	1
2	93-8530	Spring-Valve	2
3	93-8531	Retainer-Spring	2
4	93-8532	Valve-Intake	1
5	93-8533	Nut	2
6	93-8534	Nut	2
7	93-8535	Arm-Rocker	2
8	93-8536	Bolt	2
9	93-8537	Guide	1

Ref. No.	Part No.	Description	No. Used
10	93-8538	Rod-Push	2
11	93-8539	Tappet	2
12	93-8540	Pin	2
13	93-8541	Spring	1
14	93-8542	Pin	1
15	93-8543	Decompressor	1
16	93-8544	Asm-Camshaft (Incl. Ref. #12-15)	1
17	93-8545	Key	1

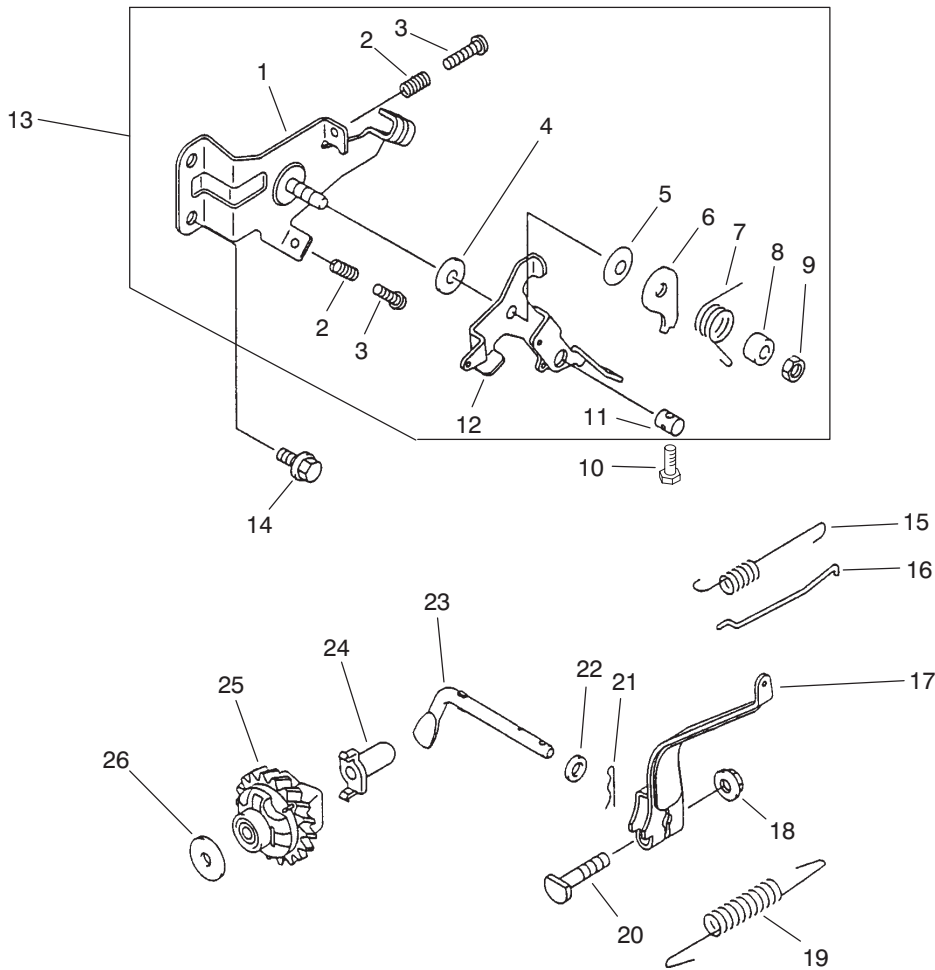


T-1625

ENGINE IGNITION ASM

Ref. No.	Part No.	Description	No. Used
1	94-9039	Clamp	1
2	93-8582	Grommet	1
3	93-8583	Clamp	1
4	93-8549	Screw	2
5	94-9038	Lead-Wire	1
6	93-8548	Bolt-Flanged	2
7	93-8550	Bolt-Flanged	10
8	94-9047	Housing-Fan	1
9	93-8546	Switch	1
10	93-8552	Asm-Recoil Starter (Incl. Ref. #11-21)	1
11	93-8553	Screw	1
12	93-8554	Pawl-Recoil	2
13	93-8555	Spring-Return	2
14	93-8556	Reel-Recoil	1
15	93-8557	Spring	1
16	94-9044	Cap-Grip	1
17	94-9045	Grip	1
18	94-9046	Case-Recoil	1
19	93-8560	Rope	1
20	93-8561	Ring-Retaining	1

Ref. No.	Part No.	Description	No. Used
21	93-8562	Guide-Pawl	1
22	94-9027	Decal-Recoil	1
23	93-8563	Shroud-Engine	1
24	93-8564	Collar	1
25	93-8565	Shroud-Engine	1
26	93-8566	Bolt-Flanged	1
27	93-8567	Pulley-Recoil	1
28	93-8568	Nut	1
29	93-8569	Washer	1
30	94-9026	Flywheel	1
31	93-8571	Key	1
32	93-8572	Fan	1
33	94-6840	Bolt-Flanged	3
34	93-8689	Decal-Instruction	1
35	94-9031	Coil-Ignition	1
36	93-8584	Plug-Spark (NGK BPR5ES)	1
37	93-8585	Cap-Spark Plug	1
38	94-9049	Terminal	1
39	94-9040	Tube	1

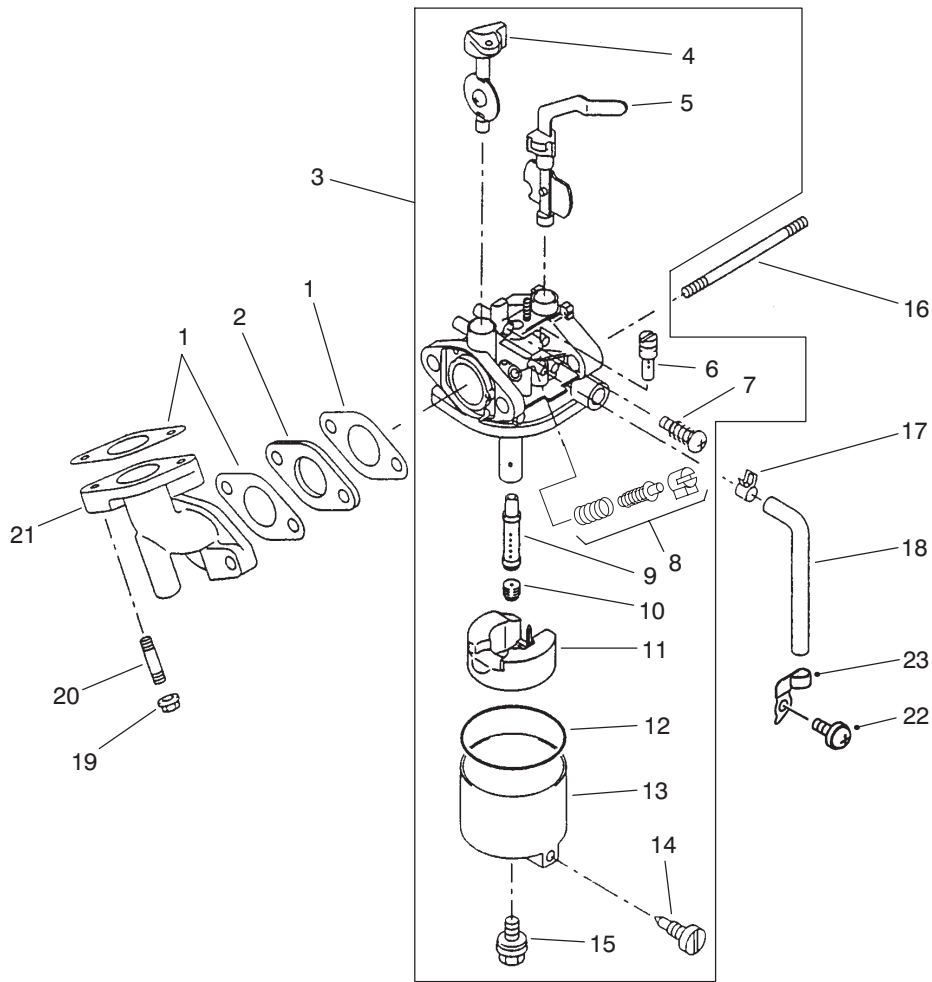


T-1618A

ENGINE GOVERNOR ASM

Ref. No.	Part No.	Description	No. Used
1	93-8587	Panel-Control	1
2	93-8588	Spring	2
3	93-8589	Bolt	2
4	93-8590	Washer	1
5	93-8591	Spring	1
6	93-8592	Plate	1
7	93-8593	Spring	1
8	93-8594	Spacer	1
9	93-8595	Nut	1
10	94-9015	Screw-HH	1
11	93-8597	Nut	1
12	93-8598	Lever	1
13	93-8599	Asm-Control Panel (Incl. Ref. #1-12)	1

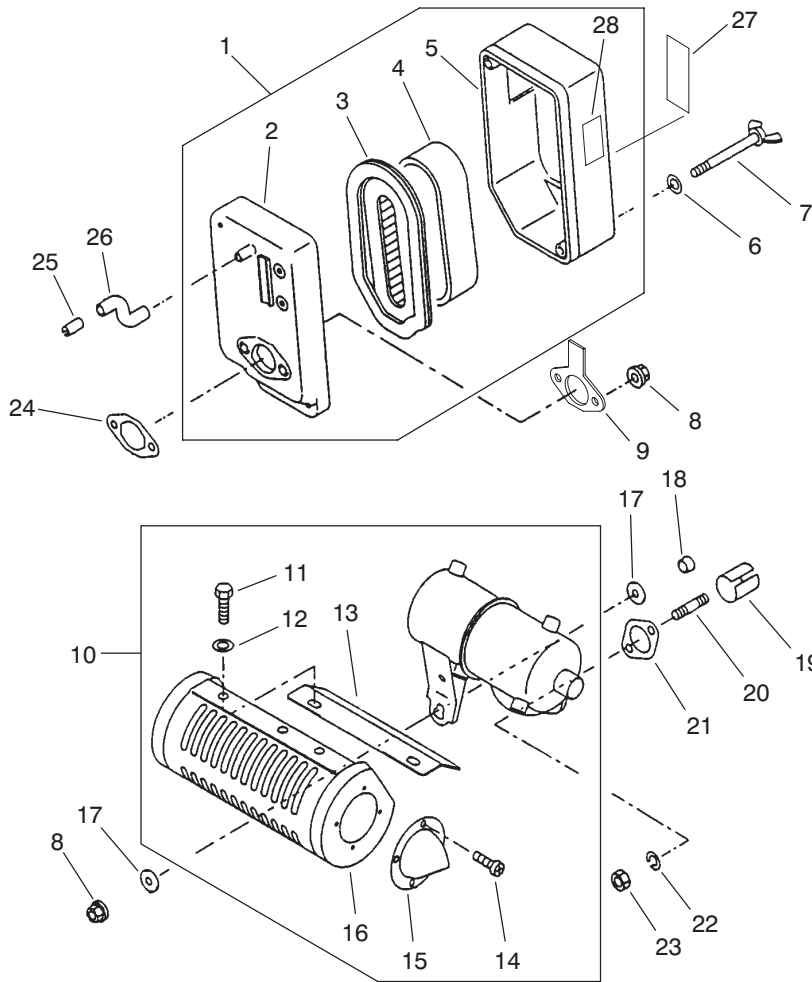
Ref. No.	Part No.	Description	No. Used
14	93-8600	Bolt-Flanged	2
15	93-8601	Spring	1
16	93-8602	Rod-Governor	1
17	93-8603	Arm-Governor	1
18	93-8631	Nut	1
19	94-9030	Spring-Governor	1
20	93-8606	Bolt	1
21	93-8607	Pin-Snap	1
22	93-8608	Washer	1
23	93-8609	Arm-Pivot	1
24	93-8610	Sleeve	1
25	94-6841	Asm-Governor	1
26	94-6842	Washer	1



T-1619A

Ref. No.	Part No.	Description	No. Used
1	93-8613	Gasket-Carburetor	3
2	94-9048	Insulator	1
3	94-9032	Asm-Carburetor (Incl. Ref. #4-15)	1
4	94-9033	Valve-Throttle	1
5	93-8617	Valve-Choke	1
6	94-9037	Jet-Pilot #40	1
7	93-8619	Asm-Screw	1
†8		Limiter	1
9	94-9035	Nozzle-Main	1
10	94-9036	Jet-Main #65	1
11	94-6844	Asm-Float	1
12	93-8624	Gasket	1

Ref. No.	Part No.	Description	No. Used
13	93-8625	Asm-Float Chamber (Incl. Ref. #14)	1
14	93-8626	Asm.-Screw	1
15	93-8627	Bolt	1
16	93-8628	Bolt-Stud	2
17	93-8629	Clamp	1
18	93-8630	Tube	1
19	93-8631	Nut	2
20	93-8632	Bolt-Stud	2
21	93-8633	Pipe-Intake	1
22	94-6845	Screw	1
23	94-6846	Clamp	1

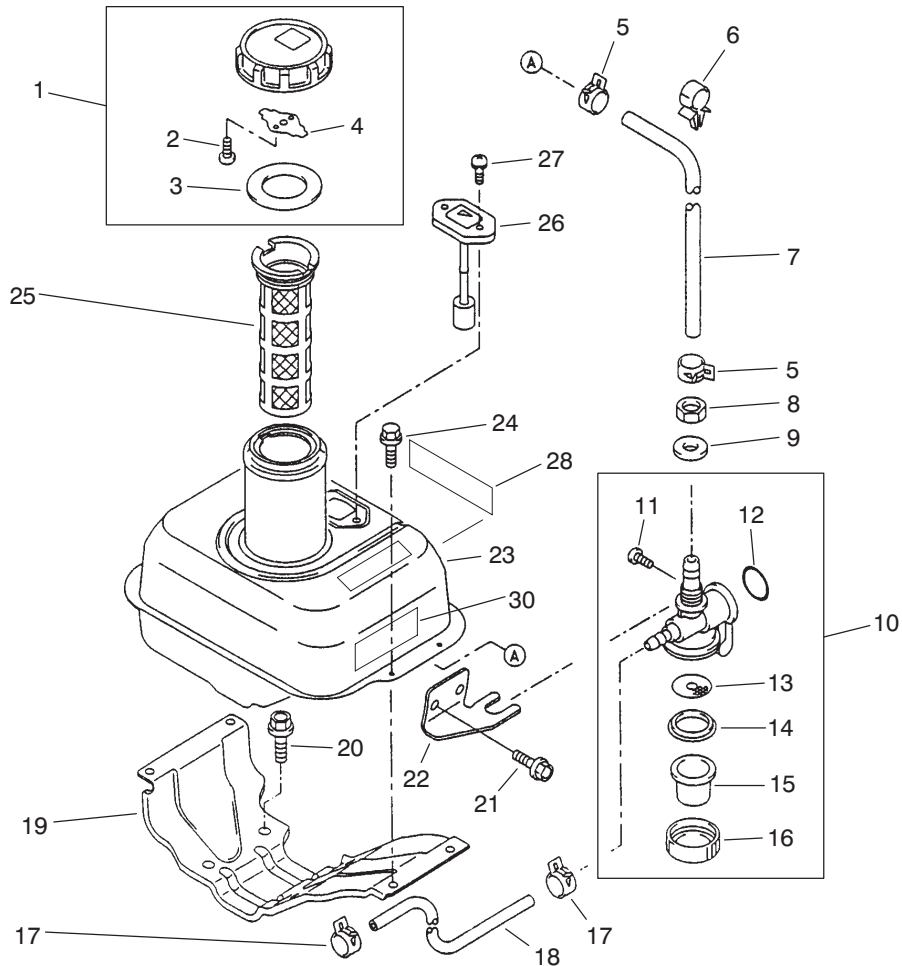


T-1620A

ENGINE AIR FILTER & MUFFLER ASM

Ref. No.	Part No.	Description	No. Used
1	93-8634	Asm-Air Filter (Incl. Ref. #2-5)	1
2	93-8635	Case-Air Filter	1
3	93-8636	Element-Air Filter	1
4	93-8637	Element-Air Filter	1
5	93-8638	Cap-Air Filter	1
6	93-8639	Washer	22
7	93-8640	Bolt	2
8	93-8641	Nut	3
9	93-8642	Plate-Air Filter	1
10	93-8643	Asm-Muffler (Incl. Ref. #11-16)	1
11	93-8644	Bolt	4
12	93-8645	Washer	4
13	93-8646	Cover-Muffler	1

Ref. No.	Part No.	Description	No. Used
14	93-8647	Screw	4
15	93-8648	Pipe-Tail	1
16	93-8649	Cover-Muffler	1
17	93-8650	Washer	2
18	93-8651	Collar	1
19	93-8652	Pipe-Exhaust	1
20	94-6848	Bolt-Stud	2
21	93-8654	Gasket-Muffler	1
22	93-8655	Washer-Spring	2
23	93-8656	Nut-Hex.	2
24	93-8657	Gasket-Air Filter	1
25	93-8658	Pipe	1
26	93-8659	Tube	1
27	93-8690	Decal-Maintenance	1
28	93-8687	Decal-Choke	1



T-1621A

ENGINE FUEL TANK ASM

Ref. No.	Part No.	Description	No. Used	Ref. No.	Part No.	Description	No. Used
1	93-8660	Asm-Fuel Cap (Incl. Ref. #2-4)	1	15	93-8674	Cup-Tap	1
2	93-8661	Screw	2	16	93-8675	Nut	1
3	93-8662	Gasket	1	17	93-8676	Clamp	2
4	93-8663	Spring	1	18	93-8677	Tube	1
5	93-8664	Clamp	2	19	93-8678	Bracket-Tank	1
6	93-8665	Clamp	1	20	94-6825	Bolt-Flanged	4
7	93-8666	Tube	1	21	93-8680	Bolt-Flanged	2
8	94-9042	Nut	1	22	93-8681	Bracket	1
9	93-8668	Washer	1	23	93-8682	Tank-Fuel	1
10	93-8669	Asm-Tap (Incl. Ref. #11-16)	1	24	93-8683	Bolt	4
11	93-8670	Screw	1	25	94-6826	Filter-Fuel	1
12	93-8671	O-Ring	1	26	93-8685	Gauge-Fuel	1
13	94-6849	Filter-Tap	1	27	93-8686	Screw	2
14	93-8673	Gasket	1	28	94-9028	Decal-Model	1
				30	93-8692	Decal-Warning	1

TORO PART NUMBER INDEX

Part No.	Description	Pg. No.	Ref. No.	Qty.	Part No.	Description	Pg. No.	Ref. No.	Qty.
3-5787	Spring	13	2	1	65-8970	Knob-Black	13	29	1
8-2520	Support-Comb	15	4	1	65-8971	Knob-Red	13	20	1
8-2530	Comb-Urethane	15	5	1	65-9080	Belt	9	35	1
11-0070	Asm-Comb, Scraper	15	6	1	65-9120	Pulley-Differential	7	15	1
11-9030	Bolt-Shoulder	11	13	3	66-2921	Washer-Friction	13	5	2
11-9030	Bolt-Shoulder	13	14	2	67-5360	Decal-Danger	11	26	1
11-9030	Bolt-Shoulder	9	14	1	71-1550	Asm-Wiehle Roller	14	5	1
11-9030	Bolt-Shoulder (Europe)	13	46	4	83-2560	Decal-Hot (Japan)	11	18	1
12-9140	Decal	16	1	1	84-6560	Decal-Warning (Japan)	5	9	1
29-9080	Handle	16	3	1	84-7280	Decal-Danger (Japan)	11	26	1
29-9090	Hose-Handle	16	4	1	86-7130	Spacer	6	10	2
33-1000	Scraper-Brush	15	2	1	86-7130	Spacer-Short	9	26	1
36-4310	Brush	16	5	1	86-7140	Spacer-Long	9	31	1
36-7260	Bar-Cutoff	5	7	1	87-5490	Switch (Europe)	13	44	1
38-7820	Bearing-Ball	6	41	2	87-5490	Switch	11	16	1
98-7820	Bearing-Ball	12	44	2	88-6790	Asm-Wiehle Roller	1	27	1
38-7820	Bearing-Ball	3	44	1	88-7090	Spacer-LH	2	*	1
38-7820	Bearing-Ball	9	45	2	88-7100	Spacer-RH	2	46	1
52-2860	Washer	5	20	4	88-7110	Rod-Frame Support	2	38	1
52-2890	Bushing	2	42	2	88-7150	Key-Square	3	10	2
52-2900	Washer-Poly	5	14	4	88-7170	Lever-Clutch	3	24	1
52-3170	Asm-Roller	14	3	1	88-7180	Pulley-Idler	6	40	1
52-3180	Bearing	2	28	2	88-7180	Pulley-Idler	3	43	1
52-3180	Bearing-Roller	14	1	2	88-7190	Spacer-Pulley Support	6	44	2
52-3590	Asm-Swaged Roller	14	4	1	88-7190	Spacer-Pulley Support	4	59	1
53-4420	Decal-Fuel	12	51	1	88-7200	Washer-Flat	6	43	2
53-4860	Decal-Safety	2	47	1	88-7200	Washer-Flat	3	46	1
57-4910	Screw-Special	5	13	13	88-7200	Washer-Flat	9	46	1
62-5070	Decal-Warning	5	9	1	88-7230	Housing-Countershaft	9	1	1
63-8440	Decal-Hot	11	18	1	88-7240	Cover-Box Front	9	37	1
63-9510	Asm-Bushing	2	43	2	88-7250	Cover-Box Rear	9	38	1
65-6200	Belt-Reel Drive	3	41	1	88-7350	Bushing	11	42	1
65-6210	Belt	6	12	2	88-7370	Pulley-Idler	9	44	1
65-6220	Cover-Bearing	6	17	1	88-7380	Spacer-Pulley Support	10	57	1
65-6270	Bolt-Bedbar	5	15	2	88-7450	Spacer	13	24	2
65-6290	Spring-Clutch Detent	3	20	1	88-7470	Housing-LH	6	4	1
65-6450	Bracket-Shield LH	5	2	1	88-7490	Housing-RH	6	*	1
65-6460	Bracket-Shield RH	5	3	1	88-7510	Shaft-Drum RH	7	12	1
65-6520	Spacer-Bearing	7	5	1	88-7520	Shaft-Drum LH	7	11	1
65-6530	Spacer-Seal	7	6	1	88-7530	Spacer	6	1	2
65-6590	Flangette	6	20	2	88-7540	Washer-Backup	6	2	2
65-6660	Pulley	6	13	2	88-7620	Decal-Danger	11	19	1
65-6700	Flangette	9	6	1	88-7670	Base-Engine	1	6	1
65-6710	Flangette	9	8	1	88-7680	Cover-Drum Belt LH	6	36	1
65-6720	Plate-Screw	9	5	1	88-7690	Cover-Drum Belt RH	6	*	1
65-6760	Housing-Bearing	9	27	1	88-7700	Cover-Reel Drive	3	50	1
65-6800	Boot-Differential	9	43	1	88-7710	Seal-Countershaft	9	34	1
65-6810	Support-Brake	9	21	2	88-7720	Washer-Wave	3	7	1
65-6850	Key	9	33	1	88-7770	Strip-Seal Front	3	51	1
65-6901	Strip-Cover Seal	9	50	1	88-7780	Strip-Seal Rear	3	52	1
65-6902	Strip-Cover Seal	10	51	1	88-7790	Strip-Seal Upper	3	53	1
65-6903	Strip-Cover Seal	10	52	1	88-7800	Strip-Seal Lower	4	54	1
65-6940	Clutch-Jaw Driver	3	11	1	88-7810	Seal Strip-Drum Cover	6	37	2
65-6950	Clutch-Jaw Driven	4	62	1	88-7830	Asm-Clutch & Pulley	4	*	1
65-6960	Pulley-Reel Driven	3	12	1	88-7840	Asm-Pulley & Drive	3	42	1
65-6970	Seal-Felt	3	18	1	88-7850	Asm-Idler Pulley	4	*	1
65-6980	Key	4	61	1	88-7850	Asm-Idler Pulley	6	*	2
65-7131	Trim-Groomer Arm Cover	3	31	1	88-7860	Spacer	3	25	1
65-7190	Cover-Groomer Arm	3	30	1	88-7870	Asm-Idler Pulley	9	*	1
65-7230	Basket-Grass	7	19	1	88-7880	Bearing	6	21	2
65-7510	Grommet-Handle	1	12	2	88-7960	Bracket-Throttle Cable	11	27	1
65-7660	Decal-Reel Engagement	4	56	1	88-7970	Clip	10	59	1
65-8260	Spacer-Engine Shaft	11	12	1	88-8950	Decal-Warning	2	33	3
65-8270	Washer	11	39	1	92-4813	Decal-Danger (Japan)	11	19	1
65-8290	Standoff-Cover	3	36	2	92-4817	Decal-Reel Engagement	4	56	1
65-8340	Scraper-Wiehle Roller	15	7	1	92-7302	Nut-Bearing Lock	6	24	1
65-8360	Scraper-Smooth	15	1	1	92-8013	Housing-Clutch	3	1	1
65-8570	Rod-Grass Catcher	1	26	2	92-8914	Bolt-Tapered Face	2	36	4
65-8610	Lever-Brake	9	19	1	92-9212	Pulley-Input Shaft	9	16	1
65-8640	Housing-Bearing	6	27	1	92-9216	Pulley-Input Drive	11	11	1
65-8640	Housing-Bearing	3	34	1	92-9218	V-Belt, Matched Set	11	38	1
65-8700	Band-Brake	9	25	1	93-1448	Cover Bracket	10	53	1
65-8720	Closure	6	29	2	93-4262	Bedknife-Micro	5	*	1
65-8730	Clamp-Bearing	6	30	4	93-4263	Bedknife-Tournament	5	*	1
65-8770	Bushing	11	10	4	93-4264	Bedknife-1/8"	5	19	1
65-8910	Pulley-Countershaft	9	32	1	93-6000	Pin-Handle Pivot	13	36	2
65-8960	Boot-Clutch	3	28	1	93-6001	Handle	13	38	1

*Not Illustrated

TORO PART NUMBER INDEX (Cont.)

3321-487

Part No.	Description	Pg. No.	Ref. No.	Qty.	Part No.	Description	Pg. No.	Ref. No.	Qty.
93-6003	Lever-Clutch	11	35	1	93-8518	Asm-Crankshaft	17	19	1
93-6011	Spring-Torsion	11	14	1	93-8520	Cover-Crankcase	17	21	1
93-6012	Spring-Torsion, Clutch	11	32	1	93-8521	Bolt-Flanged	17	22	7
93-6013	Shield-Belt	11	33	1	93-8523	Cap-Oil Filler	17	24	2
93-6014	Lever	11	9	1	93-8524	Stud	17	25	1
93-6015	Bracket-Clutch	11	17	1	93-8525	Gasket-Crankcase	17	26	1
93-6016	Washer-Retaining	13	4	1	93-8526	Key	17	27	1
93-6017	Lever-Throttle	13	6	1	93-8527	Bolt-Rod	17	28	2
93-6019	Bracket-Clutch	13	28	1	93-8528	Asm-Connecting Rod	17	29	1
93-6022	Bracket-Brake	13	17	1	93-8529	Valve-Exhaust	18	1	1
93-6024	Bushing-Handle Support	1	14	2	93-8530	Spring-Valve	18	2	2
93-6025	Rear Frame	1	10	1	93-8531	Retainer-Spring	18	3	2
93-6029	Pin-Ring	1	16	2	93-8532	Valve-Intake	18	4	1
93-6036	Console	13	32	1	93-8533	Nut	18	5	2
93-6037	Arm-Handle RH	1	*	1	93-8534	Nut	18	6	2
93-6038	Arm-Handle LH	1	13	1	93-8535	Arm-Rocker	18	7	2
93-6046	Bracket-Console RH	13	10	1	93-8536	Bolt	18	8	2
93-6047	Bracket-Console LH	13	19	1	93-8537	Guide	18	9	1
93-6048	Bracket-Height of Cut, RH	1	*	1	93-8538	Rod-Push	18	10	2
93-6049	Bracket-Height of Cut, LH	1	25	1	93-8539	Tappet	18	11	2
93-6051	Screw-Height of Cut	1	20	2	93-8540	Pin	18	12	2
93-6053	Bedbar	5	12	1	93-8541	Spring	18	13	1
93-6055	Asm-Differential	7	14	1	93-8542	Pin	18	14	1
93-6056	Shaft-Power	3	9	1	93-8543	Decompressor	18	15	1
93-6058	Lever-Brake	13	18	1	93-8544	Asm-Camshaft	18	16	1
93-6064	Seal-Grass Catcher	2	34	1	93-8545	Key	18	17	1
93-6068	Asm-Front Frame Tube	2	37	1	93-8546	Switch	19	9	1
93-6069	Asm-Grass Shield	5	1	1	93-8548	Bolt-Flanged	19	6	2
93-6073	Retainer	11	4	1	93-8549	Screw	19	4	2
93-6074	Stud	11	3	1	93-8550	Bolt-Flanged	19	7	10
93-6078	Bracket-Switch (Europe)	13	43	1	93-8552	Asm-Recoil Starter	19	10	1
93-6079	Spacer (Europe)	13	42	2	93-8553	Screw	19	11	1
93-6081	Cable-Clutch	13	12	1	93-8554	Pawl-Recoil	19	12	2
93-6082	Cable-Brake	13	15	1	93-8555	Spring-Return	19	13	2
93-6083	Screw	13	13	10	93-8556	Reel-Recoil	19	14	1
93-6084	Decal-Console	13	31	1	93-8557	Spring	19	15	1
93-6085	Decal-Throttle	13	27	1	93-8560	Rope	19	19	1
93-6087	Asm-Reel 8 Blade	5	*	1	93-8561	Ring-Retaining	19	20	1
93-6090	Arm-Height of Cut	1	24	2	93-8562	Guide-Pawl	19	21	1
93-6092	Guard-Muffler (Europe)	12	47	1	93-8563	Shroud-Engine	19	23	1
93-6093	Asm-Side Plate RH	1	1	1	93-8564	Collar	19	24	1
93-6094	Asm-Side Plate LH	1	19	1	93-8565	Shroud-Engine	19	25	1
93-6097	Asm-Reel 11 Blade	5	11	1	93-8566	Bolt-Flanged	19	26	1
93-6098	Decal-Service	5	10	1	93-8567	Pulley-Recoil	19	27	1
93-6099	Washer	11	31	1	93-8568	Nut	19	28	1
93-7252	Decal-CE Mark (Europe)	2	47	1	93-8569	Washer	19	29	1
93-7273	Decal-Danger (Europe)	11	26	1	93-8571	Key	19	31	1
93-7285	Decal-Service (Danish)	5	10	1	93-8572	Fan	19	32	1
93-7286	Decal-Service (Dutch)	5	10	1	93-8582	Grommet	19	2	1
93-7287	Decal-Service (Finnish)	5	10	1	93-8583	Clamp	19	3	1
93-7288	Decal-Service (Italian)	5	10	1	93-8584	Plug-Spark	19	36	1
93-7289	Decal-Service (Norwegian)	5	10	1	93-8585	Cap-Spark Plug	19	37	1
93-7290	Decal-Service	5	10	1	93-8587	Panel-Control	20	1	1
93-7291	Decal-Service (Swedish)	5	10	1	93-8588	Spring	20	2	2
93-7346	Decal-Reel Engagement	4	56	1	93-8589	Bolt	20	3	2
93-7347	Decal-Console (Europe)	13	31	1	93-8590	Washer	20	4	1
93-7348	Decal-Danger (Europe)	11	19	1	93-8591	Spring	20	5	1
93-7842	Decal-Safety (Japan)	2	47	1	93-8592	Plate	20	6	1
93-8064	Decal-Warning (Europe)	5	9	1	93-8593	Spring	20	7	1
93-8069	Decal-Hot (Europe)	11	18	1	93-8594	Spacer	20	8	1
93-8500	Ring-Retaining	17	1	2	93-8595	Nut	20	9	1
93-8501	Pin-Piston	17	2	1	93-8597	Nut	20	11	1
93-8502	Piston	17	3	1	93-8598	Lever	20	12	1
93-8503	Piston Ring Set	17	4	1	93-8599	Asm-Control Panel	20	13	1
93-8504	Gasket-Head	17	5	1	93-8600	Bolt-Flanged	20	14	2
93-8505	Head-Cylinder	17	6	1	93-8601	Spring	20	15	1
93-8506	Bolt-Flanged	17	7	4	93-8602	Rod-Governor	20	16	1
93-8508	Case-Rocker	17	9	1	93-8603	Arm-Governor	20	17	1
93-8509	Gasket-Rocker	17	10	2	93-8606	Bolt	20	20	1
93-8510	Breather	17	11	1	93-8607	Pin-Snap	20	21	1
93-8511	Seal-Oil	17	12	2	93-8608	Washer	20	22	1
93-8512	Pin	17	13	2	93-8609	Arm-Pivot	20	23	1
93-8513	Plug-Drain	17	14	2	93-8610	Sleeve	20	24	1
93-8514	Gasket-Drain Plug	17	15	2	93-8613	Gasket-Carburetor	21	1	3
93-8515	Crankcase	17	16	1	93-8617	Valve-Choke	21	5	1
93-8516	Pin	17	17	2	93-8619	Asm-Screw	21	7	1
93-8517	Bearing-Ball	17	18	3	93-8624	Gasket	21	12	1

*Not Illustrated

TORO PART NUMBER INDEX (Cont.)

Part No.	Description	Pg. No.	Ref. No.	Qty.	Part No.	Description	Pg. No.	Ref. No.	Qty.
93-8625	Asm-Float Chamber	21	13	1	93-9886	Decal-Fuel (Japan)	12	51	1
93-8626	Asm.-Screw	21	14	1	94-3431	Module-Interlock (Europe)	12	50	1
93-8627	Bolt	21	15	1	94-5850	Spindle-Drum	7	2	1
93-8628	Bolt-Stud	21	16	2	94-5852	Hub-Drum	7	8	1
93-8629	Clamp	21	17	1	94-5854	Frame-Adjuster, Bedbar	2	48	2
93-8630	Tube	21	18	1	94-5856	Spring-Detent	2	40	2
93-8631	Nut	20	18	1	94-5858	Washer	1	5	2
93-8631	Nut	21	19	2	94-5859	Washer-Hardened	1	2	2
93-8632	Bolt-Stud	21	20	2	94-5860	Module-Interlock	12	50	1
93-8633	Pipe-Intake	21	21	1	94-5861	Bracket-Module	12	48	1
93-8634	Asm-Air Filter	22	1	1	94-5862	Harness-Wire	11	24	1
93-8635	Case-Air Filter	22	2	1	94-5865	Harness-Wire (Europe)	11	24	1
93-8636	Element-Air Filter	22	3	1	94-5873	Asm-Screw	2	41	2
93-8637	Element-Air Filter	22	4	1	94-6312	Decal-Console (Japan)	13	31	1
93-8638	Cap-Air Filter	22	5	1	94-6825	Bolt-Flanged	23	20	4
93-8639	Washer	22	6	22	94-6826	Filter-Fuel	23	25	1
93-8640	Bolt	22	7	2	94-6836	Piston (Oversized)	17	*	1
93-8641	Nut	22	8	3	94-6837	Piston Ring Set (Oversized)	17	*	1
93-8642	Plate-Air Filter	22	9	1	94-6838	Bolt-Flanged	17	8	4
93-8643	Asm-Muffler	22	10	1	94-6840	Bolt-Flanged	19	33	3
93-8644	Bolt	22	11	4	94-6841	Asm-Governor	20	25	1
93-8645	Washer	22	12	4	94-6842	Washer	20	26	1
93-8646	Cover-Muffler	22	13	1	94-6844	Asm-Float	21	11	1
93-8647	Screw	22	14	4	94-6845	Screw	21	22	1
93-8648	Pipe-Tail	22	15	1	94-6846	Clamp	21	23	1
93-8649	Cover-Muffler	22	16	1	94-6848	Bolt-Stud	22	20	2
93-8650	Washer	22	17	2	94-6849	Filter-Tap	23	13	1
93-8651	Collar	22	18	1	94-9003	Asm-Engine	11	23	1
93-8652	Pipe-Exhaust	22	19	1	94-9007	Cover-Bellcrank	11	1	1
93-8654	Gasket-Muffler	22	21	1	94-9011	Bar	16	1	1
93-8655	Washer-Spring	22	22	2	94-9015	Screw-HH	20	10	1
93-8656	Nut-Hex.	22	23	2	94-9015	Screw-HH	12	54	1
93-8657	Gasket-Air Filter	22	24	1	94-9016	Pulley-RH	6	*	1
93-8658	Pipe	22	25	1	94-9017	Pulley-LH	6	3	1
93-8659	Tube	22	26	1	94-9018	Washer	6	15	2
93-8660	Asm-Fuel Cap	23	1	1	94-9026	Flywheel	19	30	1
93-8661	Screw	23	2	2	94-9027	Decal-Recoil	19	22	1
93-8662	Gasket	23	3	1	94-9028	Decal-Model	23	28	1
93-8663	Spring	23	4	1	94-9030	Spring-Governor	20	19	1
93-8664	Clamp	23	5	2	94-9031	Coil-Ignition	19	35	1
93-8665	Clamp	23	6	1	94-9032	Asm-Carburetor	21	3	1
93-8666	Tube	23	7	1	94-9033	Valve-Throttle	21	4	1
93-8668	Washer	23	9	1	94-9035	Nozzle-Main	21	9	1
93-8669	Asm-Tap	23	10	1	94-9036	Jet-Main #65	21	10	1
93-8670	Screw	23	11	1	94-9037	Jet-Pilot #40	21	6	1
93-8671	O-Ring	23	12	1	94-9038	Lead-Wire	19	5	1
93-8673	Gasket	23	14	1	94-9039	Clamp	19	1	1
93-8674	Cup-Tap	23	15	1	94-9040	Tube	19	39	1
93-8675	Nut	23	16	1	94-9041	Seal-O-Ring	17	23	2
93-8676	Clamp	23	17	2	94-9042	Nut	23	8	1
93-8677	Tube	23	18	1	94-9043	Gear-Helical	17	20	1
93-8678	Bracket-Tank	23	19	1	94-9044	Cap-Grip	19	16	1
93-8680	Bolt-Flanged	23	21	2	94-9045	Grip	19	17	1
93-8681	Bracket	23	22	1	94-9046	Case-Recoil	19	18	1
93-8682	Tank-Fuel	23	23	1	94-9047	Housing-Fan	19	8	1
93-8683	Bolt	23	24	4	94-9048	Insulator	21	2	1
93-8685	Gauge-Fuel	23	26	1	94-9049	Terminal	19	38	1
93-8686	Screw	23	27	2	95-0907	Bracket-Skid, Brake	13	16	1
93-8687	Decal-Choke	22	28	1	95-0908	Bracket-Skid, Clutch	13	8	1
93-8689	Decal-Instruction	19	34	1	95-0922	Guide-Belt	12	55	1
93-8690	Decal-Maintenance	22	27	1	95-0923	Flangette	6	22	2
93-8692	Decal-Warning	23	30	1	95-5715	Lever-Clutch	13	25	1
93-9008	Decal-Bail	13	47	1	95-5731	Screw-Drive	3	23	1
93-9009	Asm-Bail (Europe)	13	41	1	95-5734	Betonite Grease	8	*	1
93-9014	Pin-Actuator	3	19	1	95-5735	Axle (6-19/32" Long)	8	3	1
93-9023	Cable-Throttle	13	1	1	95-5736	Axle (20-17/32" Long)	8	2	1
93-9024	Asm-Cable, Link	11	36	1	95-5737	Seal Oil	8	14	2
93-9043	Washer-Spring	1	3	32	95-5738	Bearing Needle	8	13	4
93-9045	Asm-Wiehle Roller	14	*	1	95-5739	Screw Flanged Hex Hd.	8	11	4
93-9047	Drum	7	1	2	95-5740	Housing-Differential Carrier	8	1A	1
93-9356	Decal-Warning (Europe)	2	33	3	95-5741	Housing-Differential Carrier	8	1	1
93-9389	Decal-Warning (Japan)	2	33	3	95-5744	Washer Thrust	8	7	2
93-9391	Decal-Service (French)	5	10	1	95-5745	Washer	8	8	2
93-9392	Decal-Service (Spanish)	5	10	1	95-5746	Ring-Retaining (Pkg. of 2)	8	10	4
93-9393	Decal-Service (German)	5	10	1	95-5747	Pin Drive	8	6	1
93-9394	Decal-Service (Japan)	5	10	1	95-5748	Gear Pinion	8	5	2
93-9886	Decal-Fuel (Europe)	12	51	1	95-5749	Gear Bevel	8	4	2

*Not Illustrated

TORO PART NUMBER INDEX (Cont.)

3321-487

Part No.	Description	Pg. No.	Ref. No.	Qty.	Part No.	Description	Pg. No.	Ref. No.	Qty.
98-5912	Channel-Adjuster	2	39	2	3253-4	Washer-Lock	7	9	16
98-5913	Nut-Spring	1	4	2	3253-4	Washer-Lock	9	12	8
98-7296	Asm-Idler Pulley	12	*	1	3253-4	Washer-Lock	6	19	10
98-7297	Pulley-Idler	12	43	1	3253-4	Washer-Lock	3	47	2
233-69	Knob	3	29	1	3253-4	Washer-Spring Lock	13	22	2
237-160	Plug	4	55	1	3253-4	Washer-Spring Lock	11	37	7
2410-18	Plug	16	2	1	3253-21	Washer-Lock	9	3	4
2412-93	Clamp-R	11	20	1	3253-21	Washer-Spring Lock	11	6	2
2412-139	Clamp-Hose	9	41	1	3253-21	Washer-Spring Lock	1	8	16
2412-140	Clamp-Hose	9	42	1	3253-21	Washer-Spring Lock	13	34	2
251-204	Bearing-Ball	3	4	1	3254-4	Washer-Lock I.T.L.W.	3	16	1
251-257	Bearing	7	4	2	3254-6	Washer-Int. Tooth Lock	2	44	2
251-336	Bearing-Ball	3	13	2	3254-6	Washer-Lock I.T.L.W.	9	22	2
251-338	Bearing	6	9	2	3254-8	Washer-Lock I.T.L.W.	15	8	4
251-338	Bearing	9	30	1	3254-8	Washer-Lock I.T.L.W.	6	39	8
251-342	Bearing	6	26	1	3254-8	Washer-Lock I.T.L.W.	4	58	4
251-342	Bearing-Self-Aligning	3	37	1	3255-8	Washer-Lock	2	30	4
251-343	Bearing	9	9	1	3255-9	Washer-External Lock	11	21	2
253-96	Seal	6	33	1	3256-2	Washer-Flat	11	2	1
253-96	Seal	3	35	1	3256-22	Washer-Flat	5	5	6
253-118	Seal-Oil	3	6	1	3256-22	Washer-Flat	12	53	1
253-159	Seal-Spring Lip	7	3	2	3256-22	Washer-Flat	10	58	2
253-160	Seal	6	8	4	3256-23	Washer-Flat	7	16	4
253-160	Seal	9	29	2	3256-23	Washer-Flat	13	23	2
253-161	Seal-V-Ring	6	16	2	3256-24	Washer-Flat	9	4	4
253-163	Seal	6	25	1	3256-24	Washer-Flat	1	9	6
253-163	Seal	3	39	1	3256-24	Washer-Flat	13	35	2
256-206	Bushing	13	39	2	3256-56	Washer-Flat	11	7	10
283-75	Pin-Clevis	9	20	1	3257-30	Key	9	18	1
302-5	Fitting-Grease	14	2	2	3257-30	Key-Woodruff	7	18	2
302-5	Fitting-Grease	3	5	2	3272-6	Pin-Cotter	9	23	2
302-5	Fitting-Grease	11	8	2	3272-8	Pin-Cotter	9	24	1
302-5	Fitting-Grease	6	11	3	3289-23	Screw-FH	3	32	2
302-5	Fitting-Grease	2	29	2	3290-378	Tie-Cable	13	40	4
302-40	Fitting-Grease	6	23	2	3290-414	Washer	3	26	1
302-55	Fitting-Grease	9	7	1	3290-467	Pin-Cotter, Hair	1	15	2
302-64	Fitting-Grease	9	28	1	3290-485	Washer-Wave	3	40	1
321-2	Screw-HH	9	39	3	3295-15	Rivet	15	3	11
321-3	Screw-HH	5	4	4	3296-28	Nut-Lock Insert	13	37	2
321-3	Screw-HH	12	49	1	3296-29	Nut-Lock	3	3	2
321-3	Screw-HH	10	55	2	3296-29	Nut-Lock	6	6	4
321-4	Screw-HH	3	27	1	3296-29	Nut-Lock	1	11	2
321-8	Screw-HH	13	9	1	3296-29	Nut-Lock	7	17	4
321-11	Screw-HH	6	38	8	3296-29	Nut-Lock	13	26	4
321-20	Screw-HH	4	57	3	3296-29	Nut-Lock	11	30	4
321-23	Screw-HH	4	60	1	3296-33	Nut-Lock	7	7	1
322-2	Screw-HH	2	31	4	3296-39	Nut	3	33	2
322-3	Screw-HH	6	18	10	3296-39	Nut-Lock	1	23	2
322-3	Screw-HH	9	47	1	3296-39	Nut-Lock	6	34	2
322-3	Screw-HH	3	48	1	3296-39	Nut-Lock	12	46	1
322-5	Screw-HH	3	2	3	3296-42	Nut-Lock	5	6	4
322-5	Screw-HH	6	5	4	3296-42	Nut-Lock	13	11	2
322-5	Screw-HH	7	13	8	3296-42	Nut-Lock	9	15	1
322-5	Screw-HH	9	36	4	3296-42	Nut-Lock	3	21	1
322-9	Screw-HH	13	7	4	3296-42	Nut-Lock	11	41	4
322-9	Screw-HH	7	10	8	3296-48	Nut-Lock	2	49	2
322-9	Screw-HH	1	17	2	3296-56	Nut-Lock	13	3	1
322-9	Screw-HH	11	25	4	3296-57	Nut	6	14	2
323-4	Screw-HH	11	5	2	3296-57	Nut-Lock	9	17	1
323-4	Screw-HH	1	18	12	32103-2	Nut-Wing	16	3	1
323-5	Screw-HH	9	2	4	32120-11	Ring-Retaining	3	8	1
323-5	Screw-HH	1	7	4	32120-42	Ring-Retaining	12	45	1
323-6	Screw-HH	2	45	2	32120-42	Ring-Retaining	9	48	1
323-7	Screw-HH	6	35	2	32120-42	Ring-Snap	6	42	2
323-11	Screw-HH	11	34	1	32120-42	Ring-Snap	3	45	1
323-34	Screw-HH	13	33	2	32122-36	Screw-Slotted Truss Hd.	16	2	1
3210-7	Screw-HH	13	21	2	32128-48	Nut-Flange	5	16	2
3218-2	Nut-Jam	9	13	3	32144-73	Screw-HWHTF	11	29	1
3218-2	Nut-Jam	1	22	2	32144-73	Screw-Self Tapping	5	8	5
3218-20	Nut-Jam	11	15	2	32148-6	Insert-Threaded	2	50	9
3218-20	Nut-Jam (Europe)	13	45	2	32151-89	Ring-Retaining	3	14	1
3219-1	Nut-Hex.	15	9	4	32151-92	Ring-Retaining	3	38	1
3220-5	Nut-Jam	3	17	1	32151-95	Ring-Retaining	3	15	2
3231-5	Screw-CARR	2	32	2	33113-012	Screw-HH (Europe)	12	52	4
3242-4	Screw-Set	1	21	2	33114-016	Screw-HH	11	22	7
3253-3	Washer-Lock	3	22	1	33114-025	Screw-HH	11	40	1
3253-3	Washer-Lock	9	40	5					

*Not Illustrated

PRODUCT CHANGES

In an effort to make improvements available to TORO owners as quickly as possible, minor changes are incorporated into Toro's products from time to time that do not become immediately shown in the Parts Catalog. If such a change has been made in your unit, which is not reflected in your manual, see your TORO Distributor or his Authorized TORO Service Dealer for information and part numbers.

IDENTIFICATION AND ORDERING

MODEL AND SERIAL NUMBERS

The Greensmaster 1000 has two identification numbers; a model number and a serial number. The two numbers are stamped on a plate which is located on the main frame side plate. In any correspondence concerning the Greensmaster 1000, supply model and serial numbers to assure that correct information and replacement parts are obtained.

To order replacement parts from an Authorized TORO Service Dealer, supply the following information:

1. Model and serial number of the Greensmaster 1000.
2. Part number, description, and the quantity of part(s) desired.

NOTE: Do not order by reference number if a parts catalog is being used; use the PART NUMBER.

TABLE OF CONTENTS

Description	Page	Description	Page
Frame Asm	1-2	Scraper Options	15
Reel Drive Asm	3-4	Special Tools	16
Reel Asm	5	Engine Crankcase Asm	17
Drum Drive Asm	6	Engine Camshaft & Valves Asm	18
Drum & Basket Asm	7	Engine Ignition Asm	19
Differential Asm—Peerless Model No. 100-111 . . .	8	Engine Governor Asm	20
Countershaft Asm	9-10	Engine Carburetor Asm	21
Engine & Bellcrank Asm	11-12	Engine Air Filter & Muffler Asm	22
Handle Asm	13	Engine Fuel Tank Asm	23
Cutting Unit Roller Options	14	TORO Part Number Index	24-27

Japanese parts kit number 94-5895 contains all of the individual parts on the preceding pages designated as (Japan).