



Collector Drive for 52'' Mower

Model No. 79452-8900001 & Up

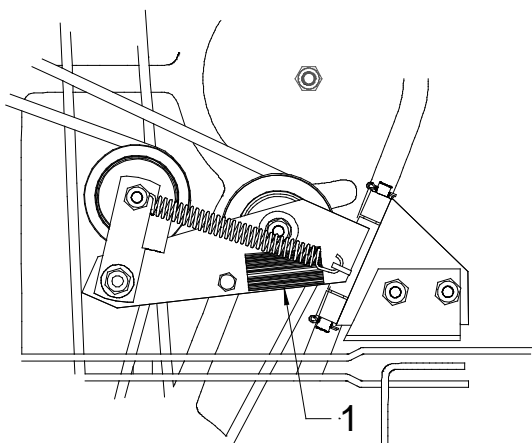
Operator's Manual

IMPORTANT: Read this manual, and **your tractor manual**, carefully. They contain information about your safety and the safety of others. Also become familiar with the controls and their proper use before you operate the product.

Introduction

We want you to be completely satisfied with your new product, so feel free to contact your local Authorized Service Dealer for help with service, genuine replacement parts, or other information you may require.

Whenever you contact your Authorized Service Dealer or the factory, always know the model of your product. This number will help the Service Dealer or Service Representative provide exact information about your specific product.



1. Model and Serial Number Plate

For your convenience, write the product model and serial numbers in the space below.

Model No.: _____

Serial No.: _____

The warning system in this manual identifies potential hazards and has special safety messages that help you and others avoid personal injury, even death. **DANGER**, **WARNING**, and **CAUTION** are signal words used to identify the level of hazard. However, regardless of the hazard, be extremely careful.

DANGER signals an extreme hazard that will cause serious injury or death if the recommended precautions are not followed.

WARNING signals a hazard that may cause serious injury or death if the recommended precautions are not followed.

CAUTION signals a hazard that may cause minor or moderate injury if the recommended precautions are not followed.

Two other words are also used to highlight information. “Important” calls attention to special mechanical information and “Note” emphasizes general information worthy of special attention.

The left and right side of the machine is determined by sitting on the seat in the normal operator’s position.

Contents

Page

| | |
|-------------------------------------|---|
| Safety and Instruction Decals | 2 |
| Installation | |
| Loose Parts..... | 3 |
| Mower Preparation..... | 3 |
| Install Idler Assembly | 4 |
| Boot Installation | 6 |
| Operation | 7 |
| Maintenance | 7 |
| Troubleshooting | 7 |

Safety and Instruction Decals



Safety decals and instruction are easily visible to the operator and are located near any area of potential danger. Replace any decal that is damaged or lost.

(1) ON BOOT BRACKET (Part No. 93-7010)



Installation

Loose Parts

Note: Use the chart below to identify parts used for assembly.

| DESCRIPTION | QTY. | USE |
|------------------------|------|---|
| Boot Assembly | 1 | Install on mower under grass deflector. |
| Operators Manual | 1 | Read before operation. |
| Idler Tension Assembly | 1 | Install on top of mower. |
| V-Belt | 1 | Install on pulley. |
| Double pulley | 1 | Install on right side of mower spindle. |
| Hex bolt ¼ x 1" | 3 | Guard |
| Lock washer ¼" | 3 | |
| Flat washer 5/16" | 3 | |
| Spacer | 3 | |

Mower Preparation

1. Remove mower from tractor if installed.
2. Remove the belt guard on top of the right side spindle.
3. Remove the right side spindle pulley by unscrewing the spindle nut (fig. 1).
4. Install the double pulley on spindle. Secure with flatwasher and nut. Tighten the nut to 80 – 100 lb./ft. (109 – 136 NM) (fig. 2).

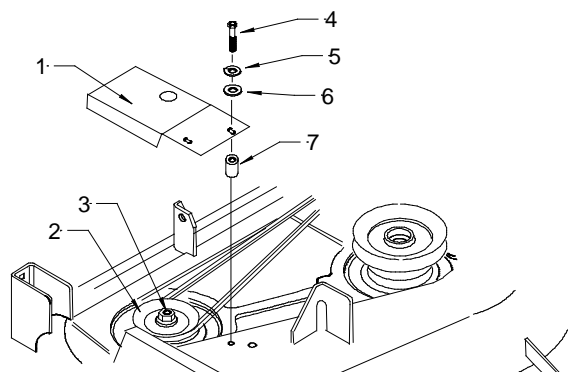


Figure 1

- | | |
|--------------------|---------------|
| 1. Belt guard | 5. Lockwasher |
| 2. Spindle pulley | 6. Flatwasher |
| 3. Spindle nut | 7. Spacer |
| 4. Hex bolt ¼ x 1" | |

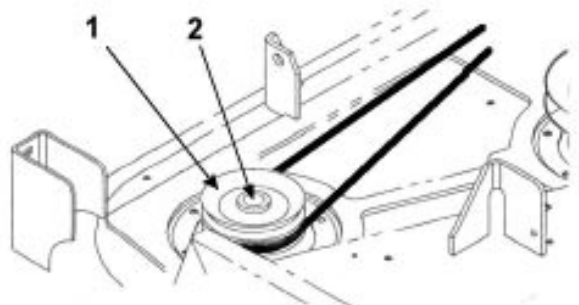


Figure 2

- | | |
|------------------|--------|
| 1. Double pulley | 2. Nut |
|------------------|--------|

Install Idler Assembly

1. Remove the right side bracket guide (fig. 3).
2. Install the double idler pulley assembly with the hinge underneath the bracket and secure with the same bolts and nuts (fig. 4).

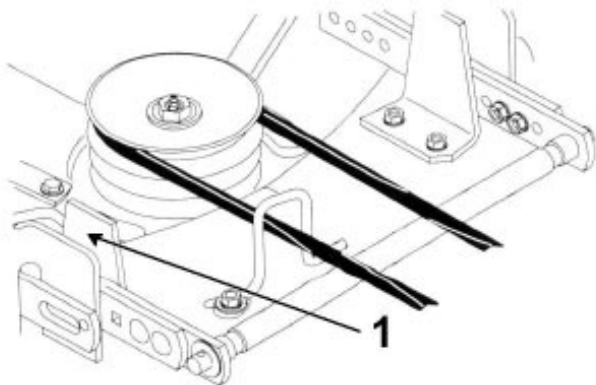


Figure 3

1. Bracket guide

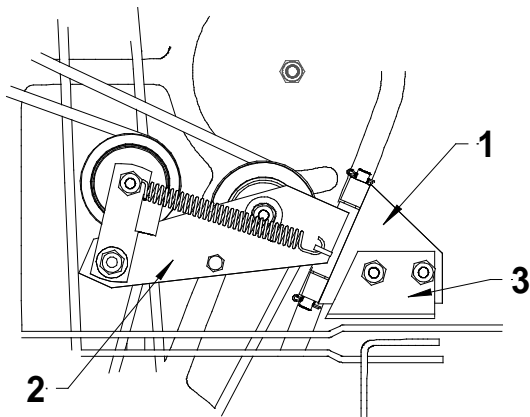


Figure 4

1. Hinge
2. Double idler
3. Guide bracket

3. Route the V-belt under the linkage to the top pulley of the blade spindle and in front of idler pulleys, then towards the back (fig. 5).

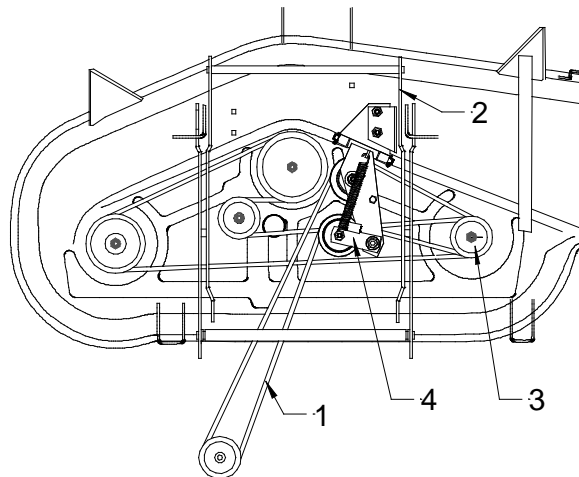


Figure 5

1. V-belt
 2. Linkage
 3. Pulley
 4. Idler pulley
4. Install the belt guard in its original place with three 0.50" spacers, 1/4" x 1.00" bolts, flat and lockwashers. Tighten securely (fig. 1).

Install Idler Assembly

5. Remove the leveler shaft from leveler bar by removing pins & washers. Remove the locking collars (fig. 6).
6. Remove the eye bolt and disconnect the trunnion (fig. 6).
7. Re-connect the trunnion and eye bolt on the opposite side of flat bar which is welded to the gauge wheel support (fig. 6).
8. Reinstall the leveler shaft by turning it 180° and inserting it through the eye bolt, through the locking collar then insert both ends of shaft into the leveler bars. Secure with pin and washer as originally installed (fig. 6).
9. Straighten the eye bolt to be perpendicular to the shaft, then slide locking collar against eye bolt and secure in place (fig. 6).

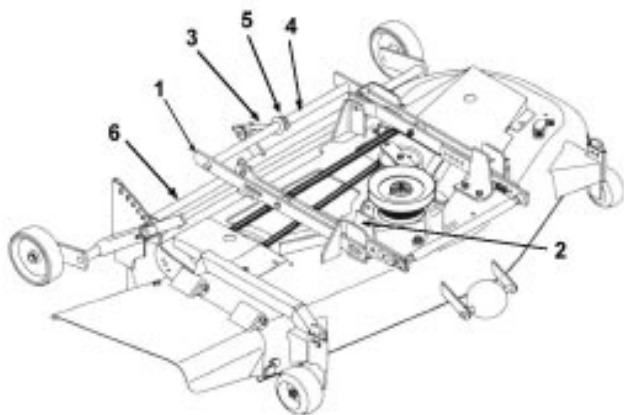


Figure 6

- | | |
|------------------|------------------------|
| 1. Linkage | 4. Leveler shaft |
| 2. Bracket guide | 5. Collar |
| 3. Trunnion | 6. Gauge wheel support |



DANGER

POTENTIAL HAZARD

- Without the grass deflector or complete grass catcher assembly mounted in place, you and others are exposed to blade contact and thrown debris.

WHAT CAN HAPPEN

- The rotating mower blade will throw debris through the boot in all directions and may cause injury or death.

HOW TO AVOID THE HAZARD

- Do not cut grass with the boot on mower if the collector & suction tube are not in place.



DANGER

POTENTIAL HAZARD

- Rotating V-belt can cut off fingers, hands or other body parts and throw objects

WHAT CAN HAPPEN

- This V-belt may get tangled with the mower V-belt & destroy both belts or get caught on mower spindle and be spun around giving a whip like effect causing injury or death.

HOW TO AVOID THE PROBLEM

- Do not run the mower if the collector drive V-belt is not properly installed in its place on the jack shaft's top pulley located on the left side of tractor rear axle. Either fully install the V-belt or fully remove. Do not run if partially installed.

Boot Installation

1. Install the boot on mower by lifting the mower grass deflector (do not remove it) and introducing the channel boot holder between the deflector and the mower deck. Release the deflector. It should lock the boot in place behind the bolt head. If the bolts are not positioned correctly to lock to boot in place, loosen the bolts, slide them to the correct position so that the guard locks the boot in place. Tighten the bolts. The boot must be touching the mower snugly (fig. 7).

See Collector set up for continued instructions.

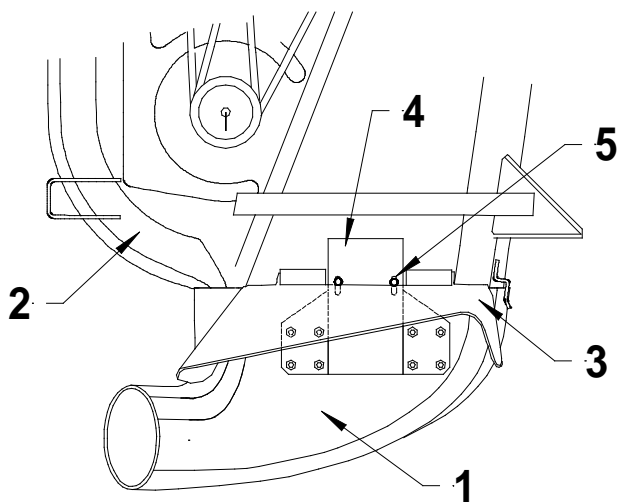


Figure 7

- | | |
|--------------|------------|
| 1. Boot | 4. Channel |
| 2. Mower | 5. Bolt |
| 3. Deflector | |

Operation

The operation of mower itself is the same with or without the collector drive.

Read:

Mower and Collector Operator's Manuals operations sections.

Maintenance

The maintenance on mower is the same with or without the collector drive except for the extra belt and idler inspection.

Read:

Mower and Collector Operator's Manuals, maintenance sections.

Troubleshooting

| PROBLEM | POSSIBLE CAUSES | CORRECTIVE ACTION |
|--------------------------------|---------------------------|---|
| Belt Comes off pulley or slips | Belt tension is incorrect | Verify if the V-belt idler tensioner slides freely. Apply oil if necessary. Verify if the spring is not damaged. Install a new belt. |

