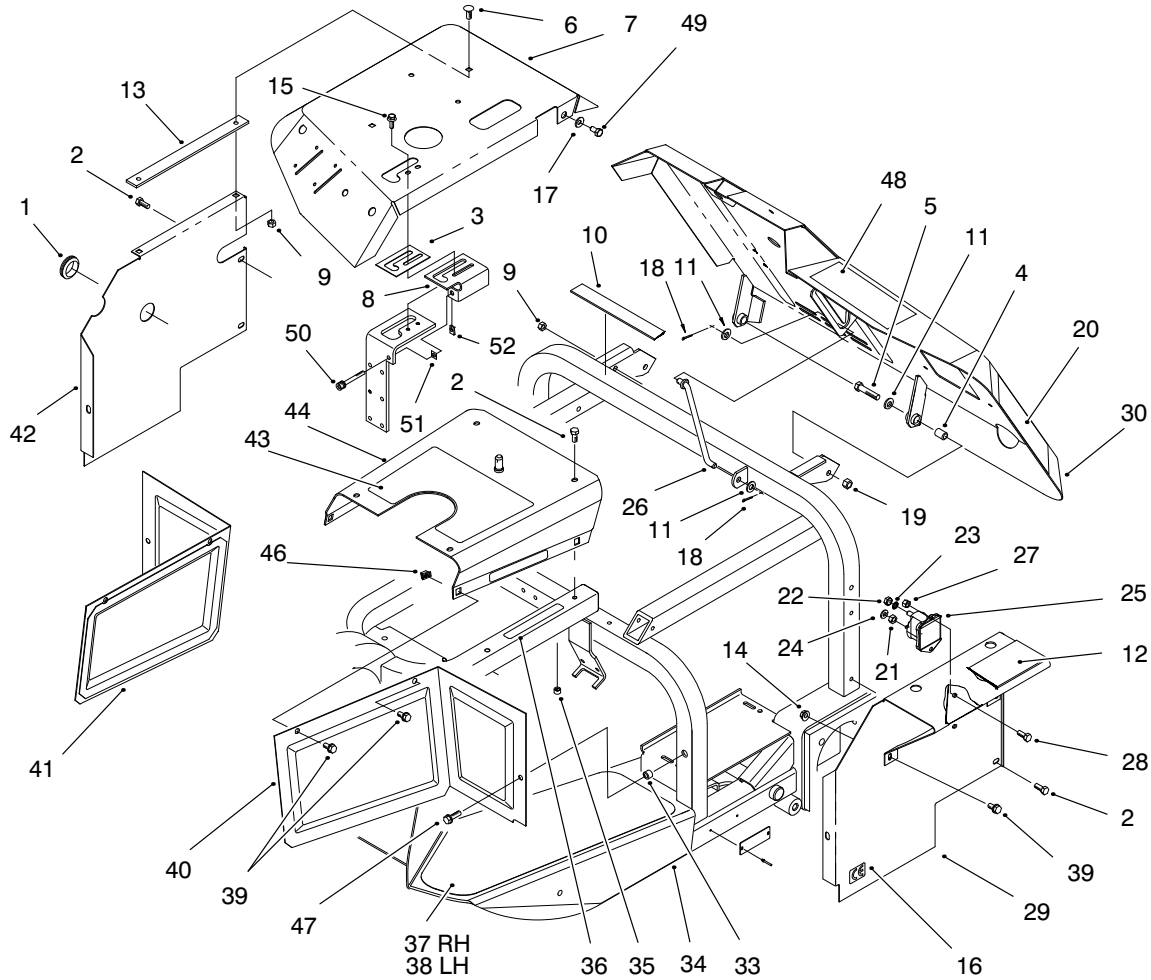




**MODEL NO. 08886-80001 & UP**

**PARTS CATALOG**

**SAND PRO® 5020**

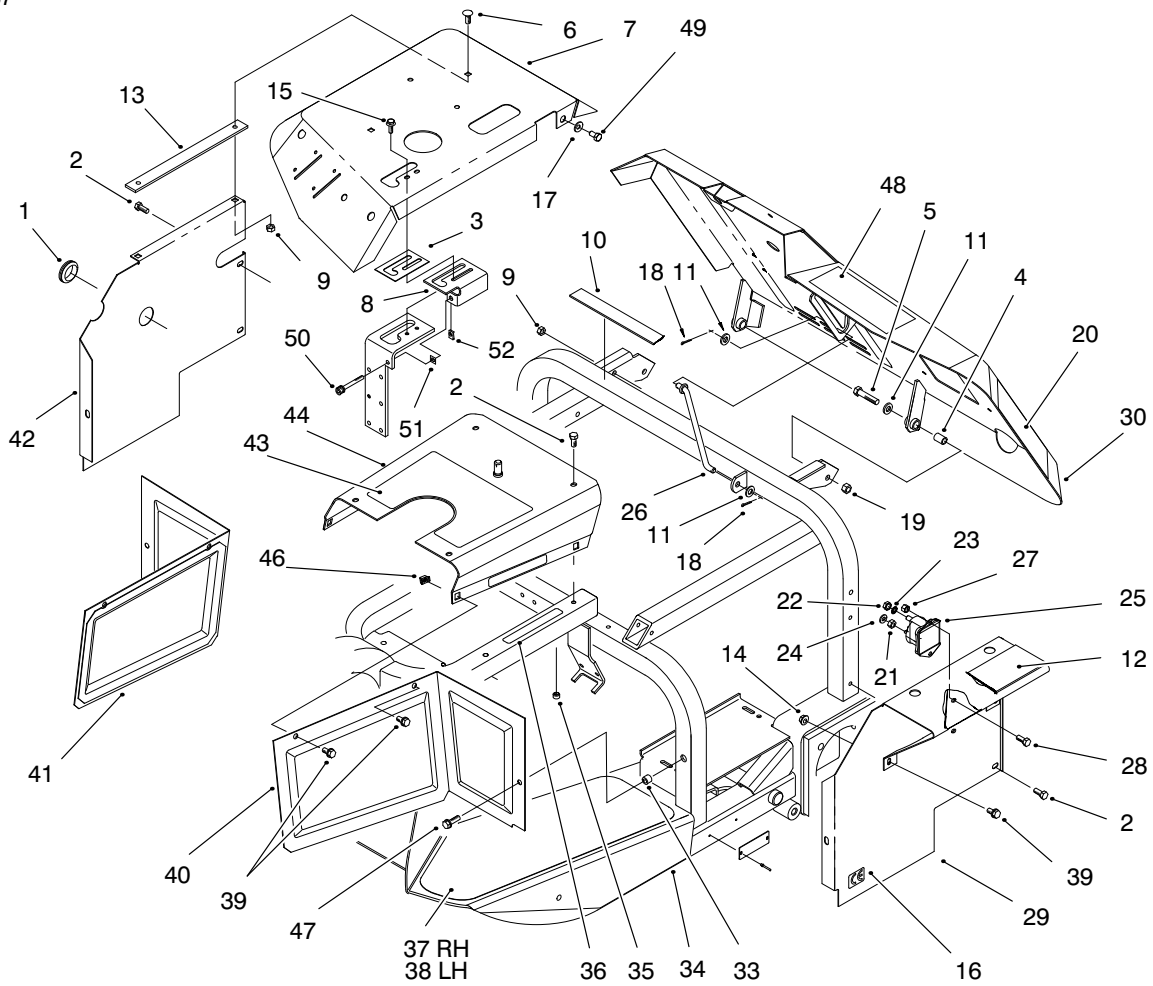


T-2786-2

**FRAME & BODY ASM**

Ref. No.	Part No.	Description	No. Used
1	240-3	Grommet-Rubber	1
2	32144-11	Screw-HWHTF	8
3	99-1629	Guide-Lever	1
4	85-0290	Spacer-Seat Support	2
5	323-9	Screw-HH	2
6	3230-20	Bolt-CARR	2
7	98-0918	Fender-RH	1
8	98-8160	Latch-Valve Lever	1
9	3296-29	Nut-Lock	3
10	98-0980	Strip-Seat Base	1
11	3256-24	Washer-Flat	4
12	98-0981	Pad-Seat Base	1
13	98-0982	Strip-Fender	1
14	32128-20	Nut-Flange Lock	1
15	3234-4	Screw-HFH.	2
16	93-7252	Decal-CE	1

Ref. No.	Part No.	Description	No. Used
17	3256-2	Washer-Flat	1
18	3272-4	Pin-Cotter	2
19	3296-39	Nut-Lock	2
20	98-0972	Decal-Sand Pro 5020	2
21	3219-14	Nut-Hex	2
22	3218-13	Nut-Jam	2
23	3254-2	Washer-Lock	2
24	3254-1	Washer-Lock	2
25	28-4210	Solenoid-Starter	1
26	98-0917	Rod-Seat	1
27	3296-42	Nut-Lock	2
28	321-3	Screw-HH	2
29	98-0966	Asm-Panel-Rear LH	1
30	98-8150	Seat Base (Incl. Ref. #48)	1
33	32148-8	Nut-Clinch	2



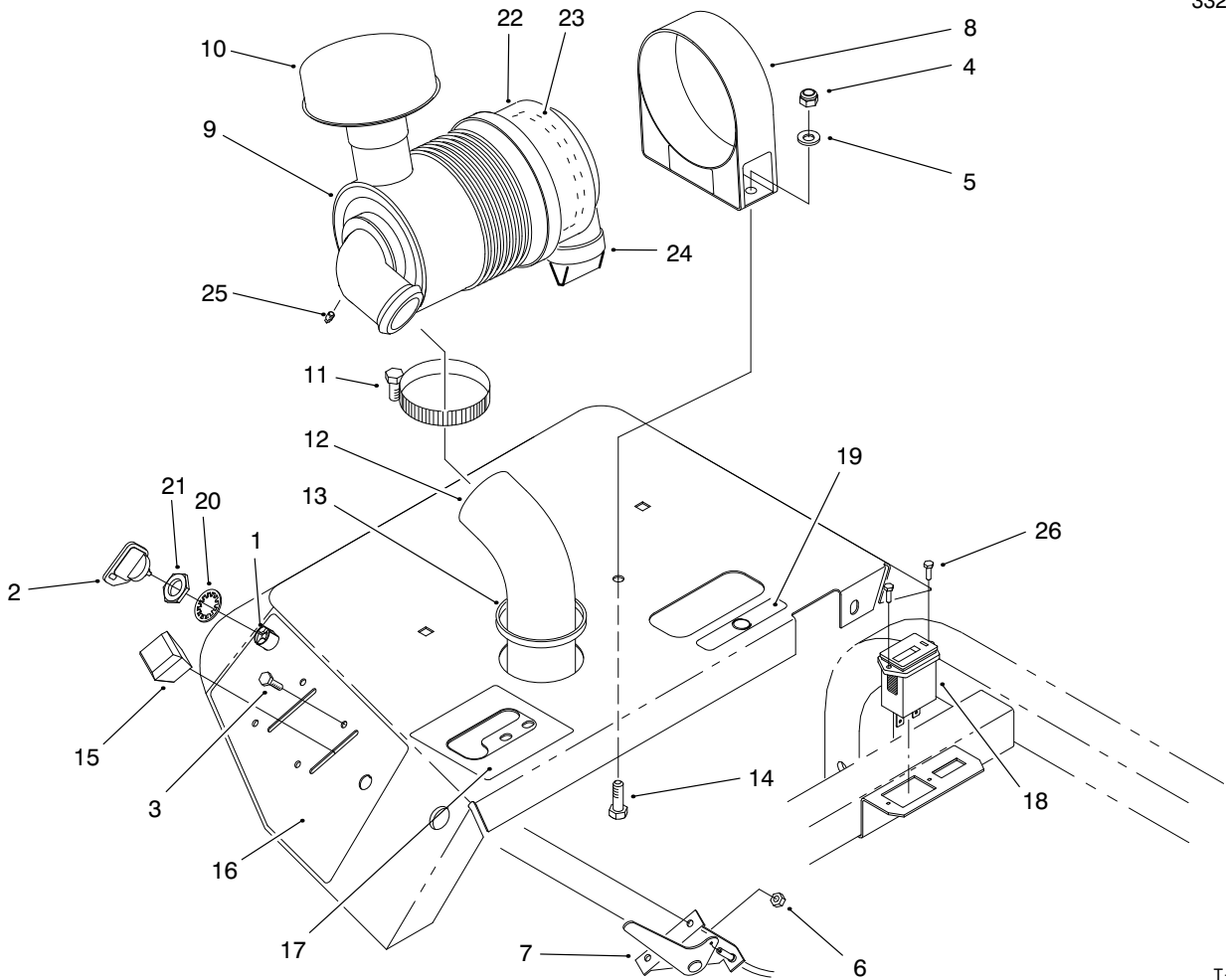
T-2786-2

## FRAME & BODY ASM (Continued)

Ref. No.	Part No.	Description	No. Used
34	98-0962	Asm-Frame (Incl. Ref. #33, 35 & 36)	1
35	32148-11	Nut-Clinch	2
36	93-9052	Decal-Danger	3
37	85-8780	Tread-Floor RH	1
38	85-8790	Tread-Floor LH	1
39	3234-7	Screw	5
40	85-9680	Panel-LH	1
41	85-8490	Panel-RH	1
42	98-0902	Panel-Rear RH	1

Ref. No.	Part No.	Description	No. Used
43	93-9050	Decal-Instruction	1
44	98-0965	Asm-Top Panel (Incl. Ref. #36, 43 & 46)	1
46	3290-496	Nut-Panel	4
47	3234-29	Screw-HFH	2
48	93-9053	Decal-Warning	1
49	322-2	Screw-HH	1
50	3274-56	Screw-HSH	1
51	32115-15	Retainer	1
52	3290-199	Speed Nut	1

\*Not Illustrated

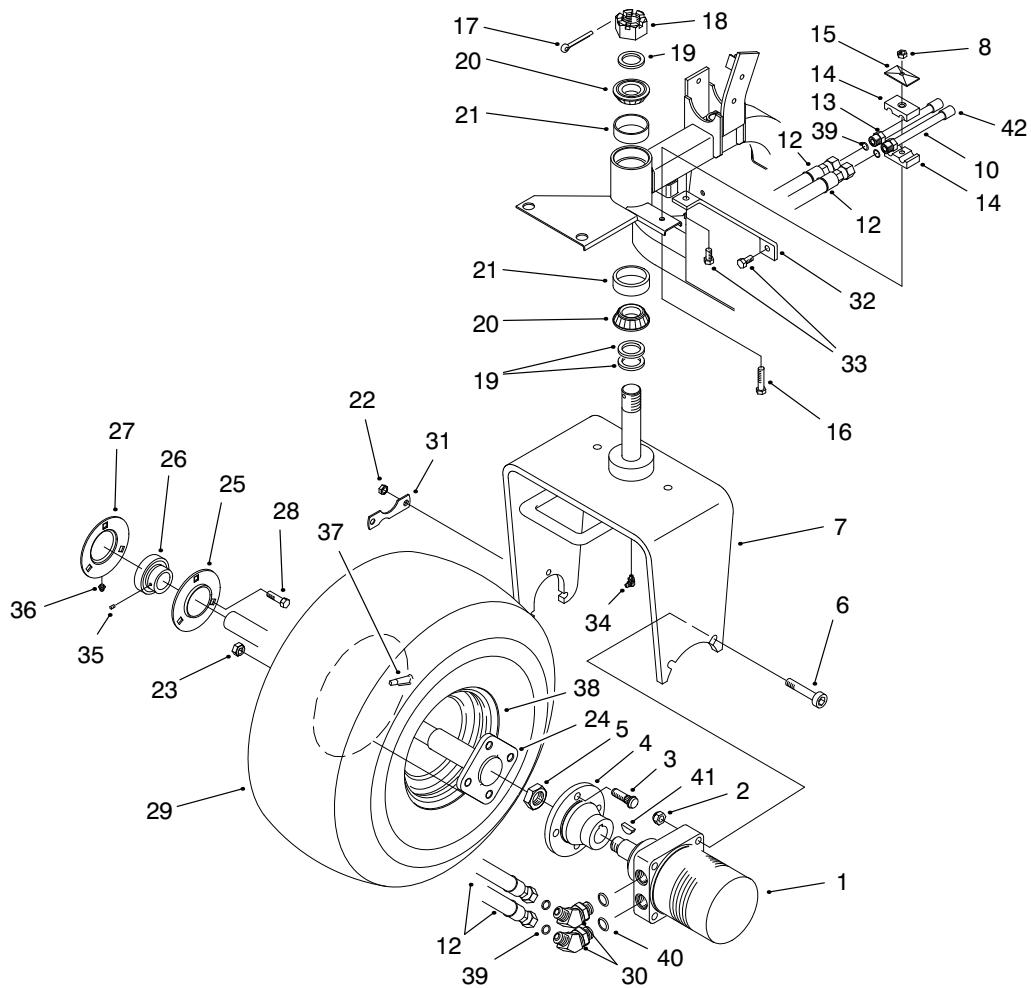


T-2787-2

## AIR CLEANER & CONTROL PANEL ASM

Ref. No.	Part No.	Description	No. Used	Ref. No.	Part No.	Description	No. Used
1	83-0020	Starter Switch (Incl. Ref. #2 & 20-21)	1	13	237-164	Grommet-Rubber	1
2	63-8360	Key-Ignition	2	14	322-5	Screw-HH	2
3	32105-13	Screw-HH	4	15	66-0120	Knob	2
4	3296-29	Nut-Lock	2	16	98-0975	Decal-Controls	1
5	3256-23	Washer-Flat	2	17	98-0984	Decal-Lift	1
6	3296-2	Nut-Lock	4	18	75-6820	Hourmeter	1
7	98-0991	Control-Choke/Throttle	2	19	93-7442	Decal-Parking Lever	1
8	95-5806	Band-Mounting	1	20	3254-5	Washer-Lock	1
9	93-2190	Asm-Air Cleaner (Incl. Ref. #22-25)	1	21	218-461	Nut-Hex.	1
10	46-7510	Hood-Air Inlet	1	22	94-3652	Asm-Cover	1
11	2412-130	Clamp-Hose	2	23	93-2195	Element-Air Cleaner	1
12	92-8977	Hose-Air Cleaner	1	24	94-1414	Valve-Air Cleaner	1
				25	285-17	Plug	1
				26	32144-18	Screw-HH	2

\*Not Illustrated



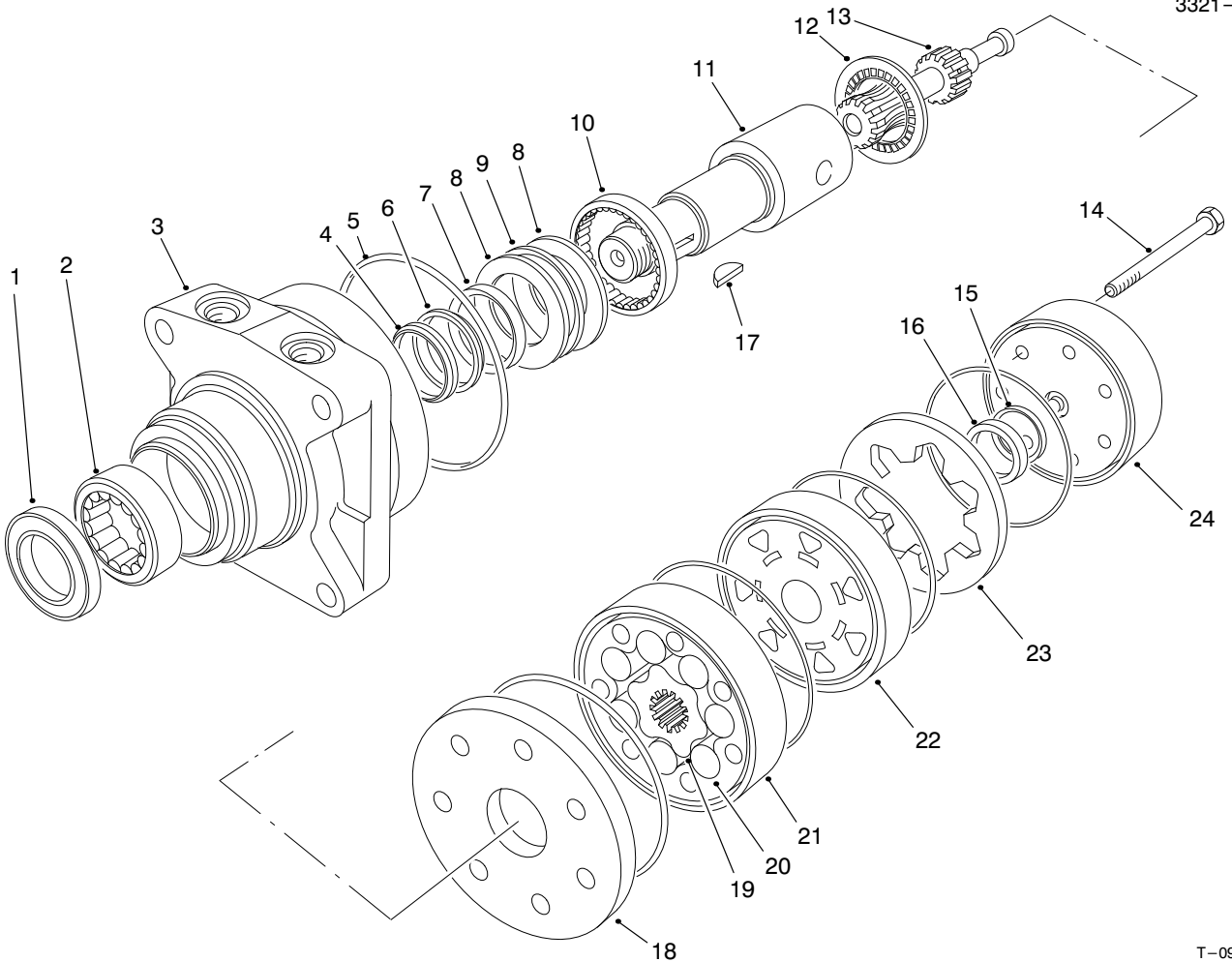
T-2788-2

### FRONT WHEEL ASM

Ref. No.	Part No.	Description	No. Used
1	98-0958	Asm-Hydraulic Motor (Incl. Ref. #41)	1
2	3296-23	Nut-Lock	2
3	10-6830	Stud-Drive	4
4	93-6838	Hub-Wheel	1
5	26-3790	Nut-Lock	1
6	3274-93	Screw-HSH	2
7	98-0950	Asm-Fork	1
8	3296-8	Nut-Lock	1
10	98-0932	Asm-Hydraulic Tube (Incl. Ref. #39)	1
12	85-9640	Hose-Hydraulic	2
13	98-0933	Asm-Hydraulic Tube (Incl. Ref. #39)	1
14	56-7976	Clamp-Tube	2
15	69-9760	Plate-Cover	1
16	321-10	Screw-HH	1
17	3272-37	Pin-Cotter	1
18	32136-9	Nut-Hex.	1
19	18-6320	Washer-Steering	3
20	254-70	Bearing-Cone	2
21	254-61	Bearing-Cup	2
22	3296-39	Nut-Lock	3
23	242-50	Nut-Lug	4

Ref. No.	Part No.	Description	No. Used
24	92-8969	Spindle	1
25	85-8950	Flangette	1
26	251-352	Asm-Bearing (Incl. Ref. #35)	1
27	85-8940	Asm-Flangette (Incl. Ref. #36)	1
28	323-29	Screw-HH	3
29	85-8290	Tire	1
*	116973	Tire-Turf (Optional)	2
30	340-89	Fitting-Hydraulic 45° (Incl. Ref. #39 & 40)	2
31	88-8350	Tab-Bearing	1
32	98-0926	Strap	1
33	32104-6	Screw-HH	2
34	302-33	Fitting-Grease	1
35	302-5	Screw-Set	2
36	302-5	Fitting-Grease	1
37	232-32	Valve-Stem	1
38	94-6116	Rim	1
39	237-30	O-Ring	4
40	237-80	O-Ring	2
41		Key-Woodruff	1
42	38-3400	Snubber	2

\*Not Illustrated



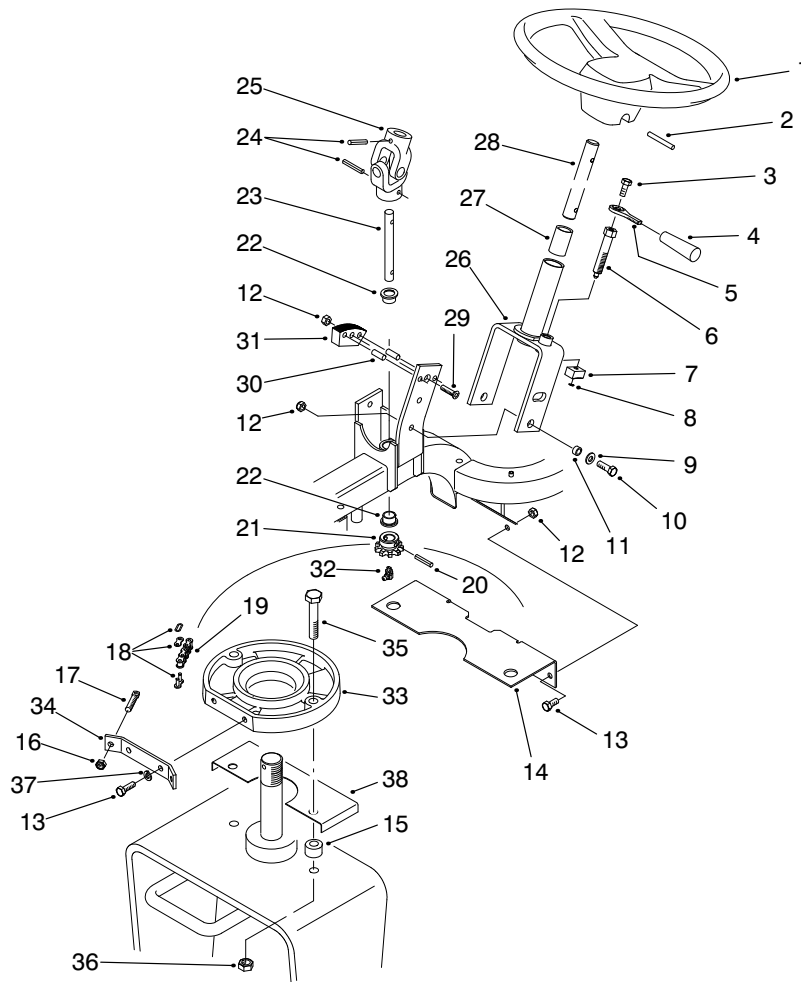
T-0983-2

## FRONT HYDRAULIC DRIVE MOTOR NO. 98-0958

Ref. No.	Part No.	Description	No. Used
1		Seal-Dirt & Water	1
2		Bearing	1
3		Housing	1
4		Washer-Backup	1
5		Seal-Rings	5
6		Washer-Backup	1
7		Seal-Inner	1
8		Washer-Thrust	2
9		Bearing-Thrust	1
10		Bearing	1
11	76-0860	Shaft-Coupling	1
12	76-0850	Bearing-Thrust	1
13		Link-Drive	1
14		Screw-HH	7
15		Seal-Commutator	1
16		Commutator	1

Ref. No.	Part No.	Description	No. Used
17	3257-42	Key-Woodruff	1
18	76-0870	Plate-Wear	1
19		Rotor	1
20		Vane	7
21		Stator	1
22		Manifold	1
23		Ring-Commutator	1
24	76-0940	Asm-Cover, End	1
*		Rotor Set (Incl. Ref. #19-21)	1
*	76-0880	Asm-Commutator (Incl. Ref. #15, 16 & 23)	1
*	94-8178	Kit-Seal (Incl. Ref. #1, 4-7 & 15)	1
*	76-0810	Asm-Housing (Incl. Ref. #2, 3 & 8-10)	1

\*Not Illustrated

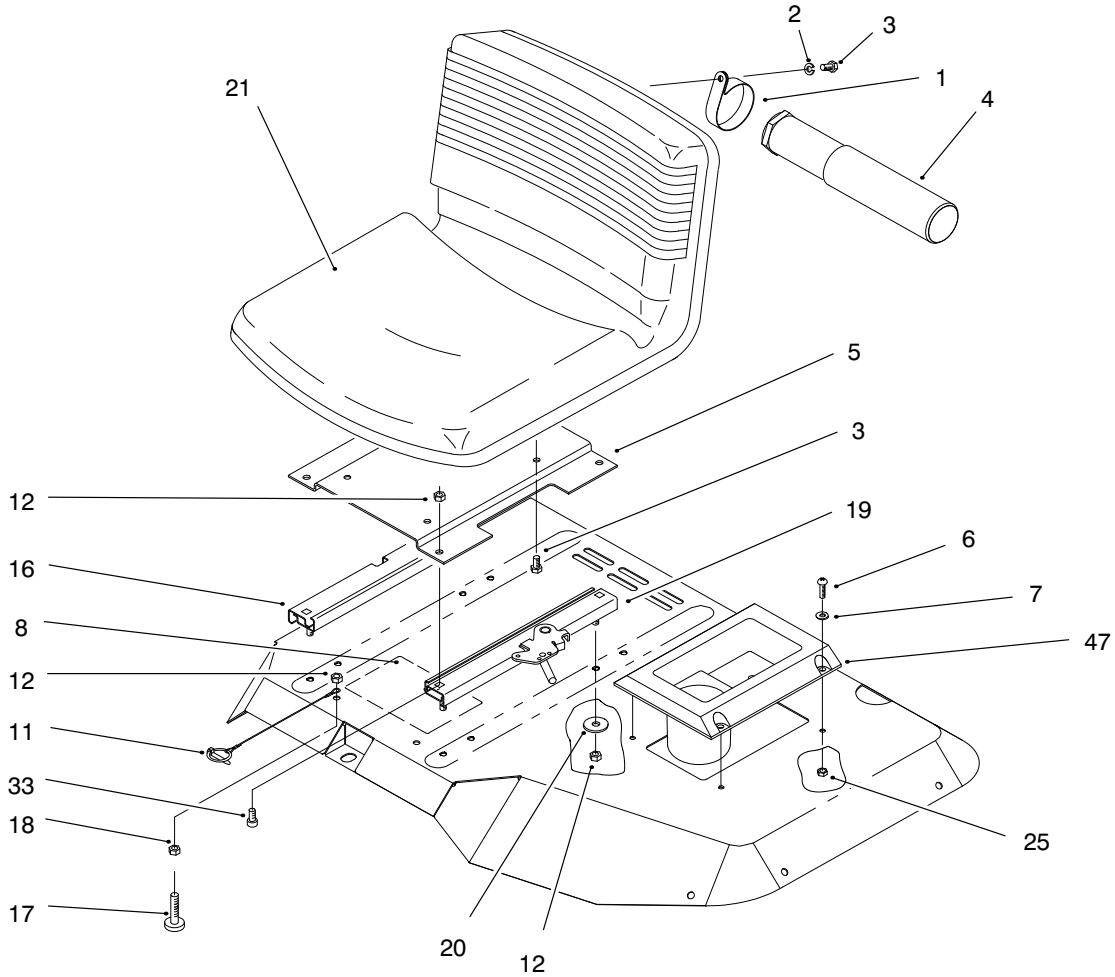


T-2789

## STEERING ASM

Ref. No.	Part No.	Description	No. Used
1	76-1420	Wheel-Steering	1
2	32121-111	Pin-Roll	1
3	322-43	Screw-HH	1
4	233-39	Handle	1
5	88-8280	Lever-Steering Adjust	1
6	94-4514	Pin-Tilt Lock	1
7	88-8530	Block-Lock Upper	1
8	94-4513	Ring-Retaining	1
9	3256-23	Washer-Flat	3
10	322-5	Screw-HH	3
11	85-9120	Spacer	3
12	3296-29	Nut-Lock	6
13	322-3	Screw-HH	4
14	98-0983	Bracket-Fuel Tank	1
15	98-0978	Spacer	2
16	3296-4	Nut-Lock	2
17	18-6380	Bolt-Adjustment	2
18	2710-11	Link-Connecting	2
19	85-8030	Chain	1
20	98-0973	Pin-Grooved	1

Ref. No.	Part No.	Description	No. Used
21	85-9180	Sprocket	1
22	65-8770	Bushing-Flange	2
23	98-0928	Shaft-Steering Lower	1
24	32121-15	Pin-Roll	2
25	85-9200	Joint-Universal	1
26	88-8290	Asm-Steering Column (Incl. Ref. #27)	1
27	256-185	Bushing-Sleeve	1
28	85-9220	Shaft-Steering Upper	1
29	3289-24	Screw-HSFH	1
30	88-8510	Dowel	2
31	88-8520	Block-Lock Lower	1
32	302-33	Fitting-Grease	1
33	98-0924	Guide-Chain	1
34	98-0925	Bracket-Chain	1
35	325-11	Screw-HH	2
36	3296-25	Nut-Lock	2
37	3253-4	Washer-Lock	2
38	98-0929	Plate-Chain Stay	1

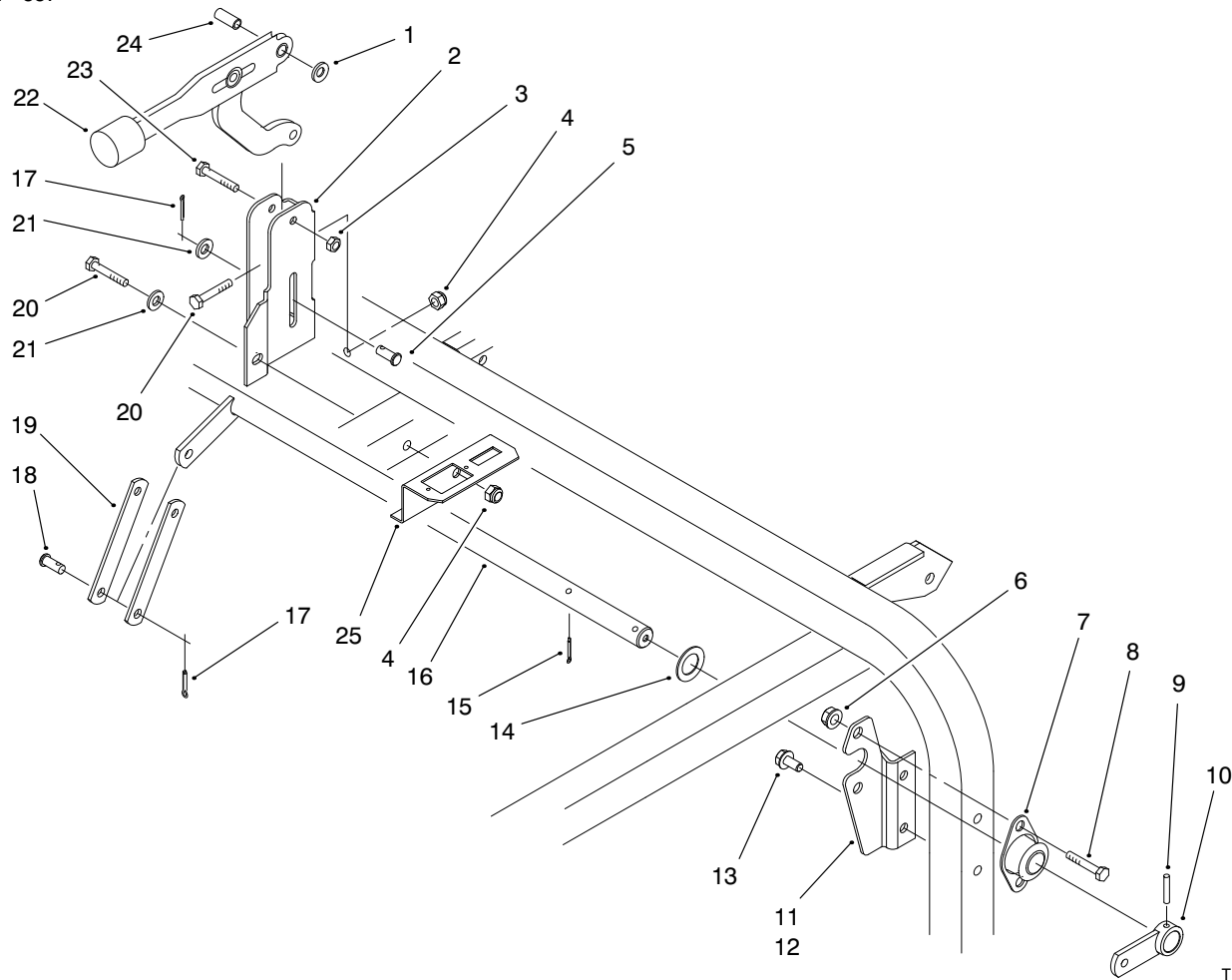


T-2790-1

## SEAT ASM

Ref. No.	Part No.	Description	No. Used
1	2412-133	Clamp-R	2
2	3253-4	Washer-Lock	2
3	322-2	Screw-HH	6
4	74-0720	Tube-Manual	1
5	85-9660	Plate-Seat Adjust	1
6	3258-166	Screw-Round Hd.	4
7	3256-1	Washer-Flat	4
8	98-0977	Decal-Service	1
11	98-0979	Pin-Lynch	1
12	3296-29	Nut-Lock	10

Ref. No.	Part No.	Description	No. Used
16	51-0780	Slider-Seat 4"	1
17	32141-36	Level-Screw	2
18	3218-2	Nut-Jam	2
19	51-0790	Slider-Seat	1
20	63-8410	Washer-Flat	4
21	92-8976	Seat	1
25	3296-42	Nut-Lock	4
32	3256-23	Washer-Flat	1
33	3274-12	Screw-HSH	4



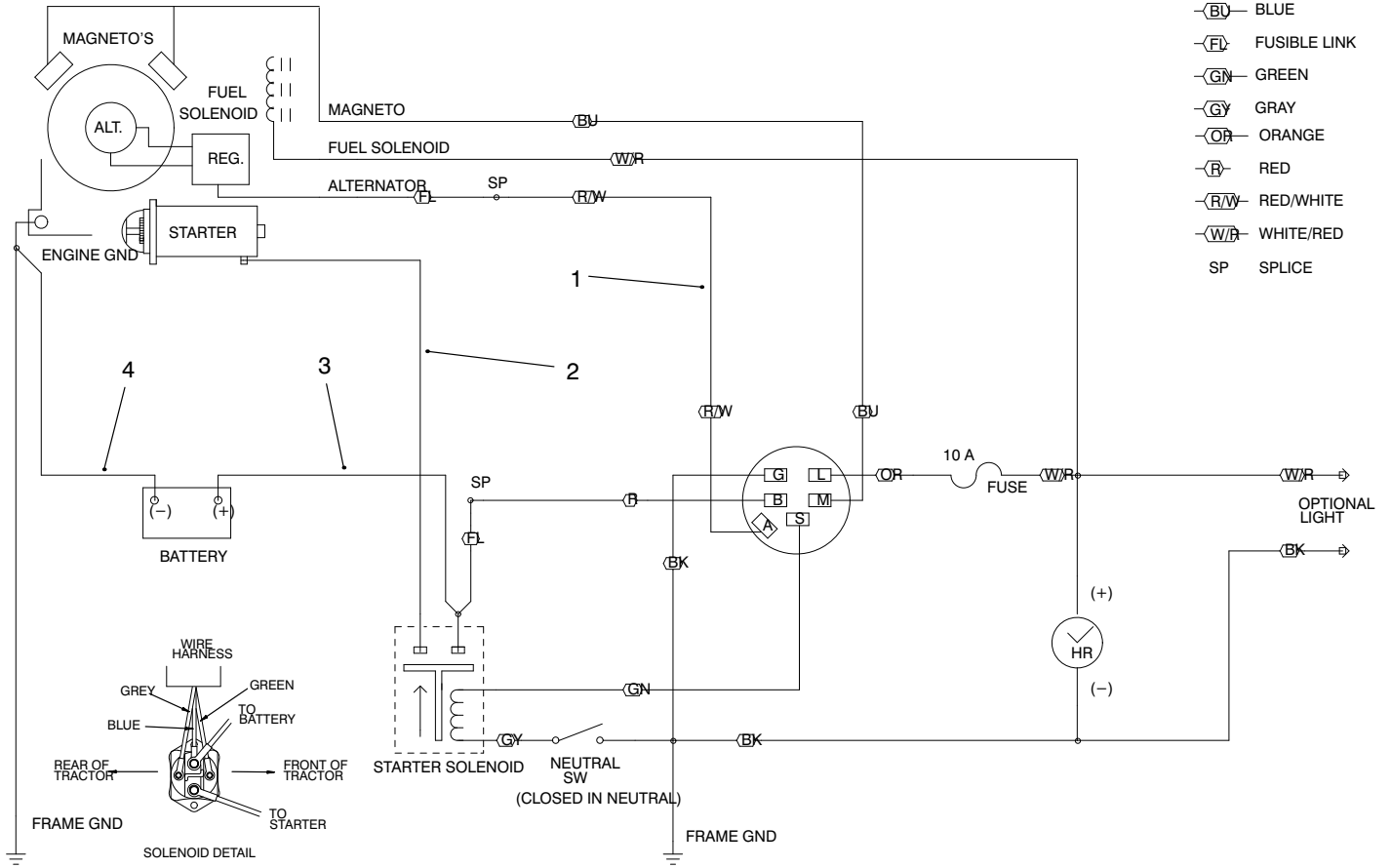
T-2750-3

## PARKING BRAKE ASM

Ref. No.	Part No.	Description	No. Used
1	3290-477	Washer-Curved	1
2	95-5823	Bracket-Lever	1
3	3296-42	Nut-Lock	1
4	3296-29	Nut-Lock	2
5	238-14	Pin-Clevis	1
6	3296-39	Nut-Lock	4
7	27-2320	Bearing-Side Flange	2
8	3234-1	Screw-HFH	4
9	32121-6	Pin-Roll	2
10	83-9310	Arm-Brake	2
11	98-0900	Bracket-Bearing LH	1
12	98-0901	Bracket-Bearing RH	1
13	32144-14	Screw-HWH	4

Ref. No.	Part No.	Description	No. Used
14	67-9410	Washer-Flat	2
15	3272-12	Pin-Cotter	2
16	95-5848	Rod-Traverse	1
17	3272-10	Pin-Cotter	2
18	283-62	Pin-Clevis	1
19	95-5844	Strap	2
20	322-11	Screw-HH	2
21	3256-23	Washer-Flat	2
22	87-2710	Asm-Lever	1
23	321-9	Screw-HH	1
24	87-4710	Spacer-Parking Brake	1
25	98-0922	Bracket-Hourmeter	1

- BK BLACK
- BU BLUE
- FL FUSIBLE LINK
- GN GREEN
- GY GRAY
- OR ORANGE
- R RED
- RW RED/WHITE
- WR WHITE/RED
- SP SPLICE

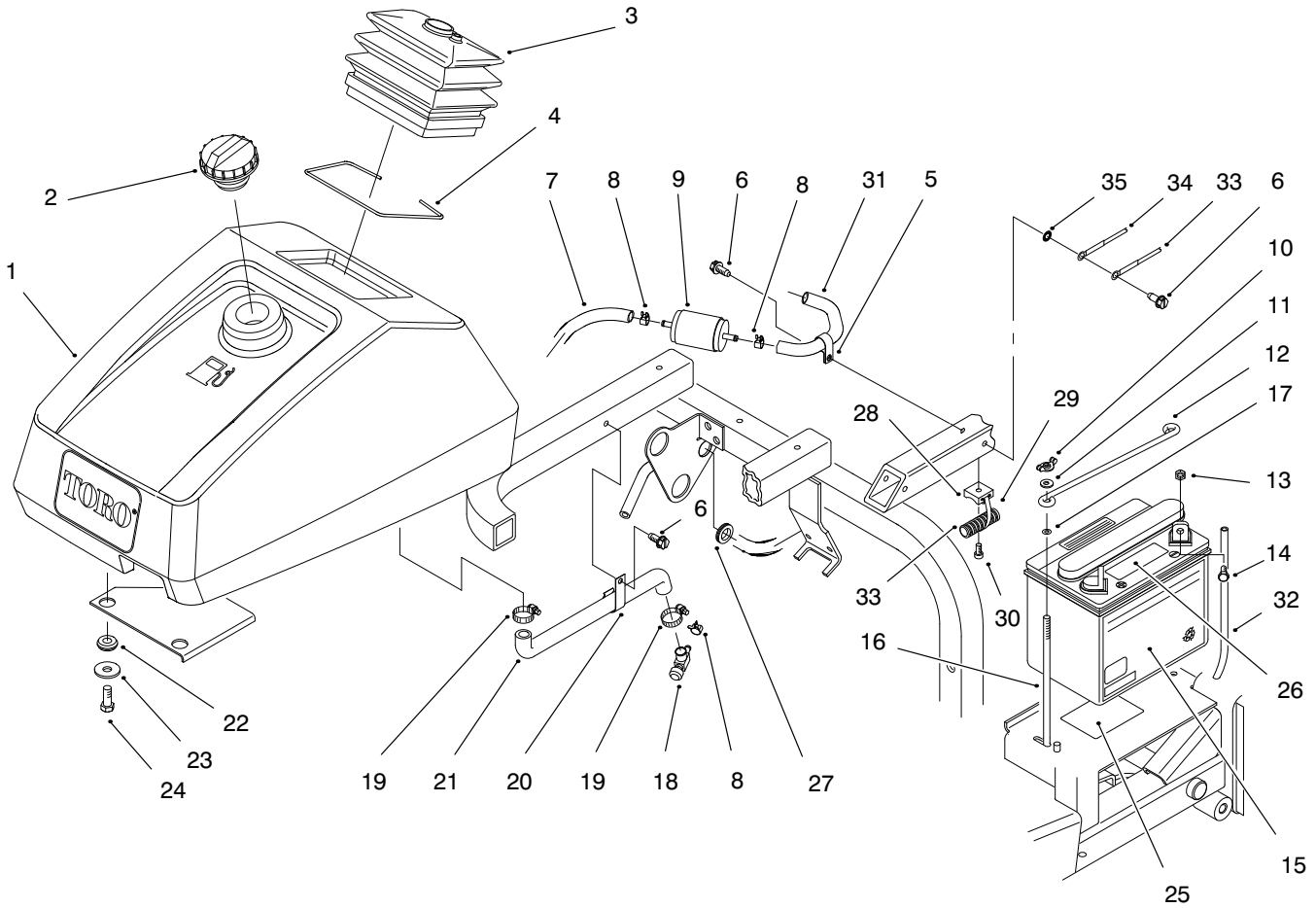


T-2791-2

## ELECTRICAL SCHEMATIC

Ref. No.	Part No.	Description	No. Used
1	98-0994	Wire Harness—Main	1
2	80-2110	Cable—Solenoid—Starter	1

Ref. No.	Part No.	Description	No. Used
3	83-2420	Cable—Positive	1
4	88-8330	Cable—Engine Ground	1

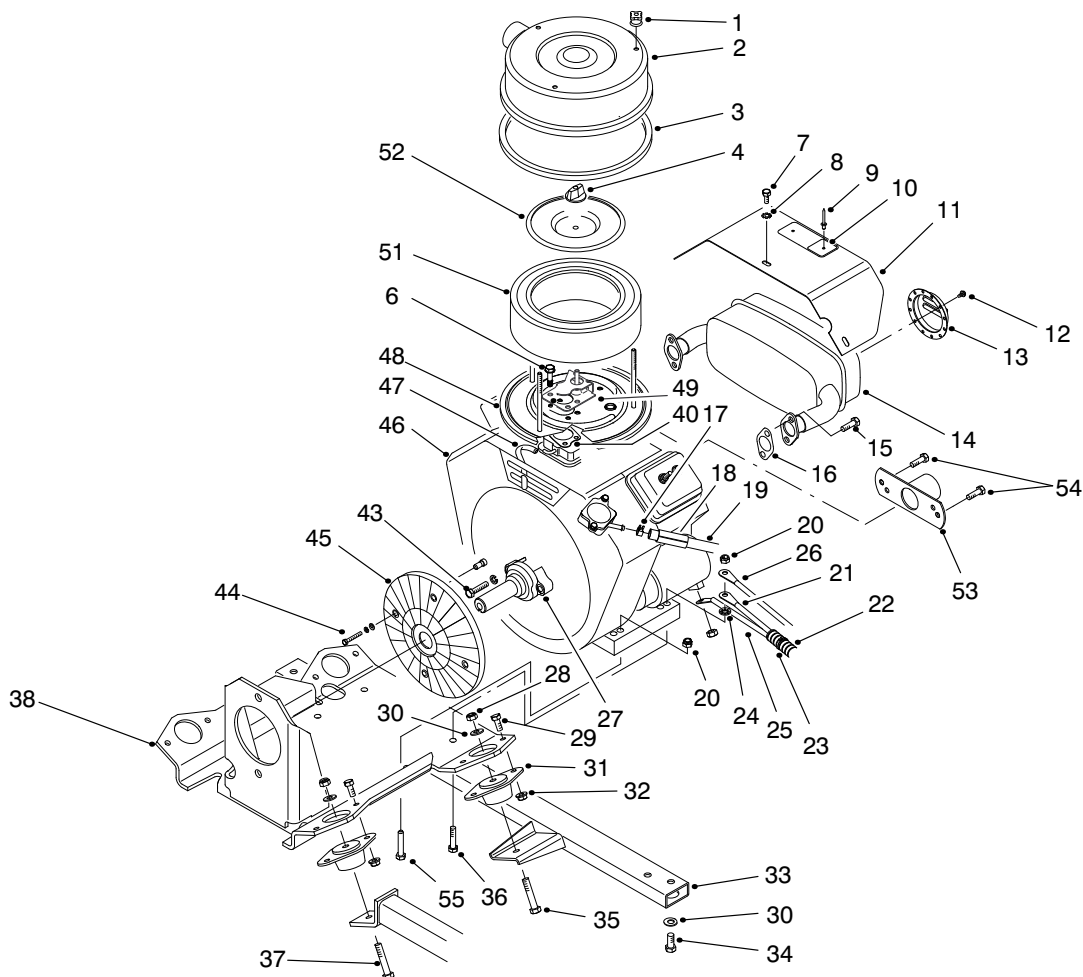


T-2792-2

## FUEL TANK & BATTERY ASM

Ref. No.	Part No.	Description	No. Used
1	98-0927	Tank-Fuel	1
2	93-7170	Cap-Fuel	1
3	85-9010	Boot-Steering	1
4	85-8930	Retainer-Boot	1
5	2412-93	Clamp-R	1
6	32144-11	Screw-TAP	3
7	98-0976	Hose-Fuel	1
8	2412-98	Clamp-Hose	3
9	94-2690	Filter-Fuel	1
10	32103-12	Nut-Wing	2
11	3256-22	Washer-Flat	2
12	72-4790	Hold-Down-Battery	1
13	3217-5	Nut-Hex.	2
14	321-3	Screw-HH	2
15	92-1678	Battery (Incl. Ref. #32)	1
16	56-7720	Rod-Battery Hold-Down	2
17	237-143	Grommet	2

Ref. No.	Part No.	Description	No. Used
18	83-1390	Fitting-Fuel Shut-Off	1
19	2412-36	Clamp-Hose	2
20	2412-109	Clip-J	1
21	98-0995	Hose-Fuel	1
22	240-11	Grommet	4
23	63-8410	Washer-Flat	4
24	323-5	Screw-HH	4
25	93-6668	Decal-Battery	1
26	93-7276	Decal-Danger	1
27	237-124	Grommet	1
28	3290-509	Tie-Mount	1
29	3290-378	Tie-Cable	1
30	3274-31	Screw-HH	1
31	47-2964	Hose-Fuel	1
32		Hose-Battery Vent	1
33	98-0994	Wire Harness-Main	1
34	98-0999	Wire-Ground	1
35	3254-2	Washer-Lock	1



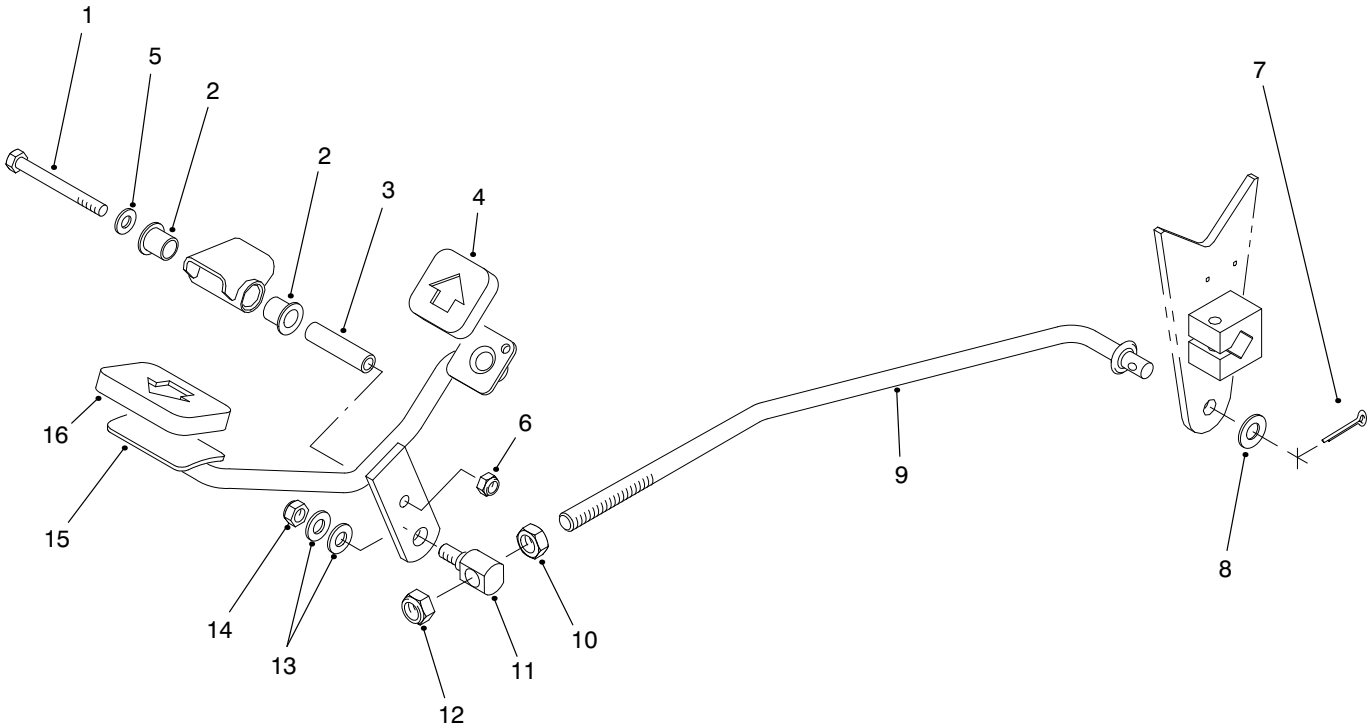
T-1474-4

## ENGINE & MUFFLER ASM

Ref. No.	Part No.	Description	No. Used	Ref. No.	Part No.	Description	No. Used
†1	281051	Knob-Air Cleaner	3	28	3296-39	Nut-Lock	4
2	98-0953	Cover-Air Cleaner	1	29	322-4	Screw-HH	8
3	85-8360	Seal-Cover	1	30	3256-24	Washer-Flat	8
†4	491875	Knob-Air Cleaner	1	31	83-1031	Mount-Engine	4
†6	805317	Screw-HFH	5	32	3296-29	Nut-Lock	8
7	33113-008	Screw-HH	3	33	85-8600	Support-Engine	1
8	3255-7	Washer-ETLW	3	34	323-5	Screw-HH	4
9	3269-32	Rivet-Pop	2	35	323-10	Screw-HH	2
10	95-0645	Plate-Hot Surface	1	36	322-10	Screw-HH	2
11	95-5827	Asm-Muffler Shield (Incl. Ref. #9 & 10)	1	37	323-11	Screw-HH	2
12	83-2230	Screw	4	38	85-8640	Base-Engine	1
13	83-2220	Deflector-Exhaust	1	†40	805700	Gasket-Carburetor	1
14	98-0960	Muffler	1	†43	93847	Screw-HH	2
†15		Screw	4	†44	805447	Screw-HH	4
†16	805024	Gasket-Exhaust	2	†45	808034	Asm-Screen/Spacer	1
17	2412-98	Clamp-Hose	1	46	98-0930	Asm-Engine	1
18	38-3400	Guard-Rubber	1	47	75-4705	Hose-Fuel	1
19	47-2964	Hose-Fuel	1	48	85-8430	Base-Air Cleaner	1
20	3296-29	Nut-Lock	4	†49	808311	Shield-Carburetor Inlet	1
21	88-8330	Cable-Negative	1	†51	272490	Element-Air Cleaner	1
22	94-4519	Cover-Cable	1	†52	805631	Plate-Element	1
23	3290-378	Tie-Cable	2	53	95-0632	Cover	1
24	3254-2	Washer-ITLW	1	54	3210-2	Screw-HH	2
25	83-2420	Cable-Positive	1	*	83-2240	Arrester-Spark (Optional)	1
26	98-0999	Wire-Ground	1	55	322-8	Screw-HH	2
†27	262949	Shaft-Stub	1				

\*Not Illustrated

†Contact your local Briggs &amp; Stratton Dealer for part replacement.

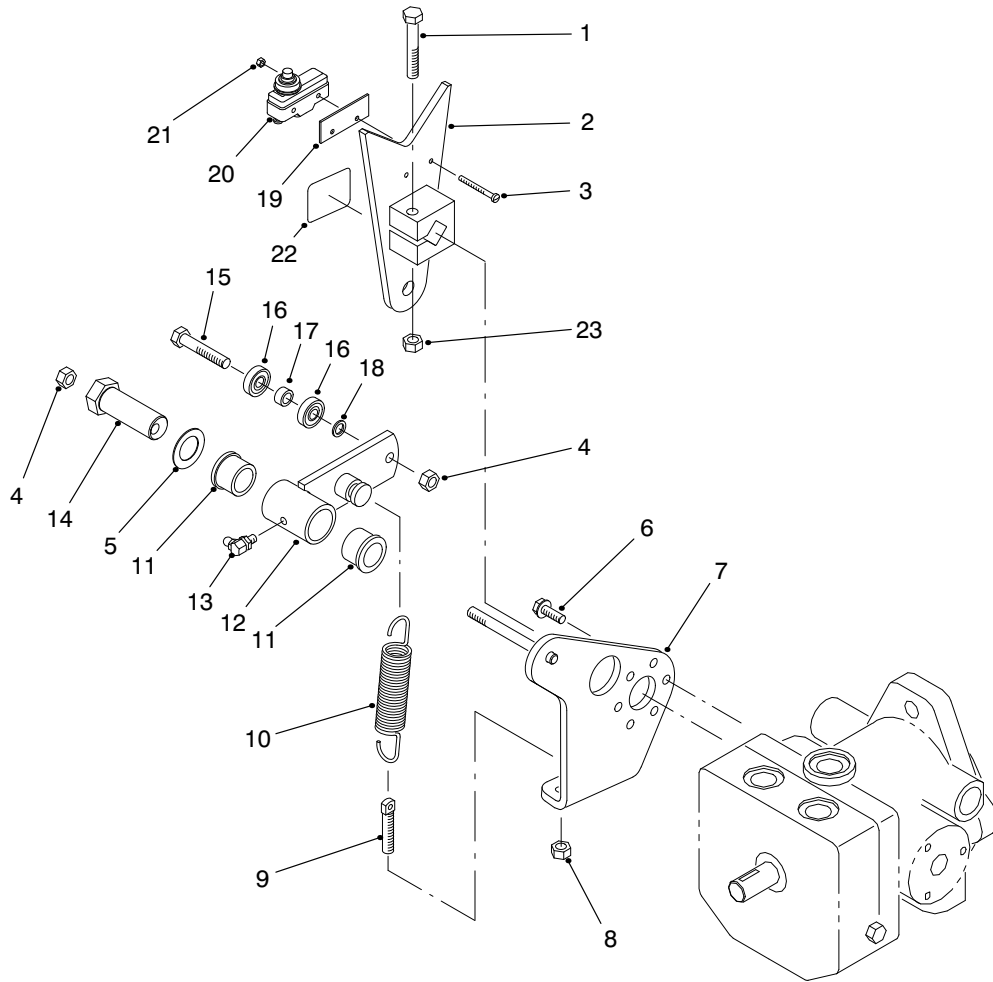


T-1476

## TRACTION PEDAL ASM

Ref. No.	Part No.	Description	No. Used
1	322-14	Screw-HH	1
2	256-219	Bushing-Flange	2
3	85-8960	Spacer	1
4	74-9110	Pad-Reverse	1
5	3256-23	Washer-Flat	1
6	3296-29	Nut-Lock	1
7	3272-16	Pin-Cotter	1
8	3256-26	Washer-Flat	1

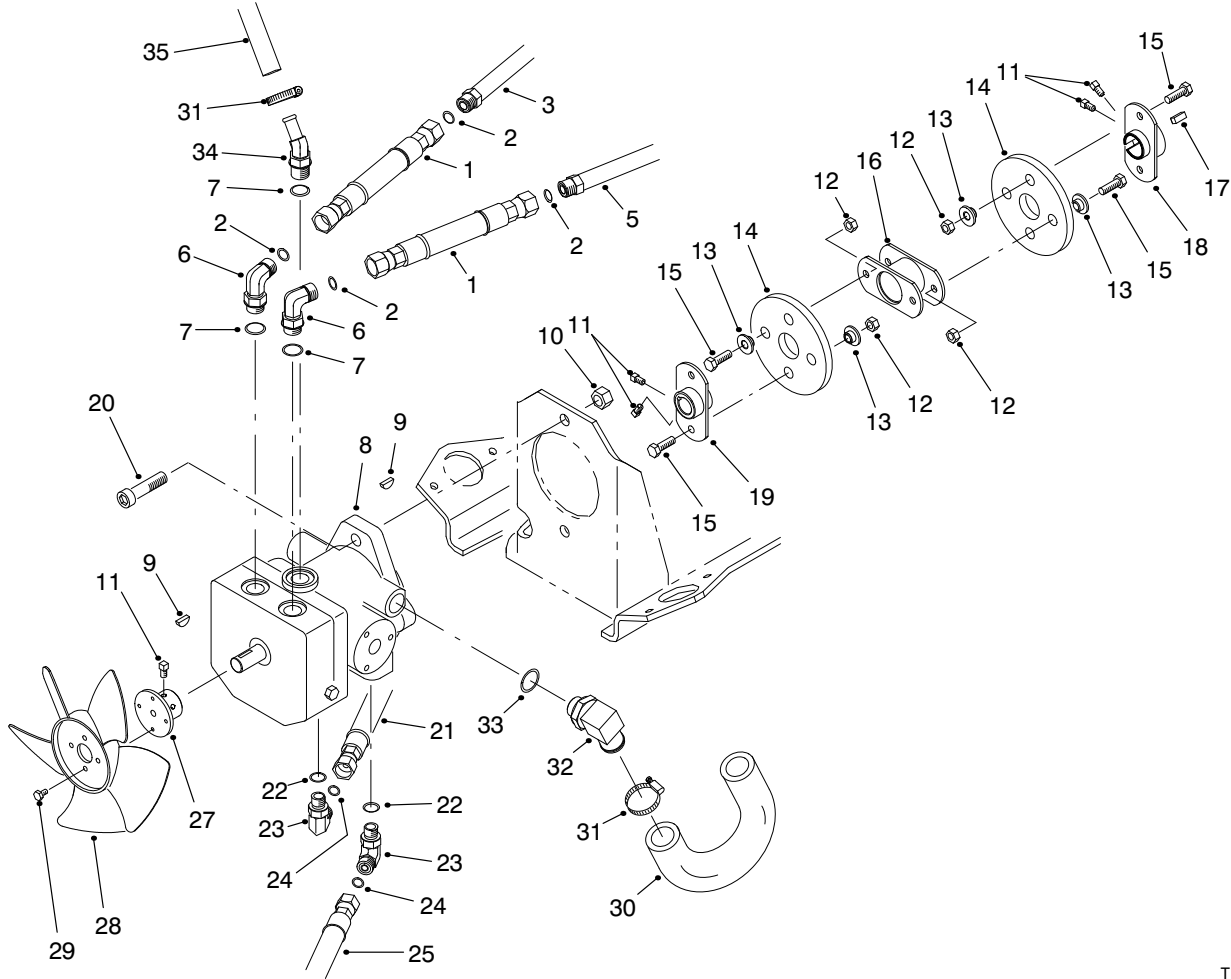
Ref. No.	Part No.	Description	No. Used
9	85-8450	Rod-Control	1
10	3218-5	Nut-Jam	1
11	92-2344	Trunnion	1
12	3296-23	Nut-Lock	1
13	3256-24	Washer-Flat	2
14	3296-39	Nut-Lock	1
15	92-2343	Asm-Pedal	1
16	74-9100	Pad-Forward	1



T-1480

## PUMP CONTROL LEVER ASM

Ref. No.	Part No.	Description	No. Used	Ref. No.	Part No.	Description	No. Used
1	323-10	Screw-HH	1	13	302-60	Fitting-Grease	1
2	85-8300	Lever-Pump	1	14	76-8640	Stud-Traction	1
3	32105-21	Screw-Machine	2	15	322-8	Screw-HH	1
4	3296-29	Nut-Lock	2	16	251-307	Bearing	2
5	3-6498	Washer-Thrust	1	17	85-9120	Spacer	1
6	49-2040	Screw-HFH	3	18	75-5470	Spacer	1
7	95-0553	Plate-Pump	1	19	85-9150	Plate-Switch	1
8	3296-4	Nut-Lock	1	20	29-6163	Switch-Neutral	1
9	18-6380	Pin-Adjusting	1	21	3296-9	Nut-Lock	2
10	85-9030	Spring-Extension	1	22	93-9051	Decal-Eccentric Bolt	1
11	256-113	Bushing-Flange	2	23	3296-39	Nut-Lock	1
12	85-8460	Asm-Switch Arm (Incl. Ref. #11 & 13)	1				

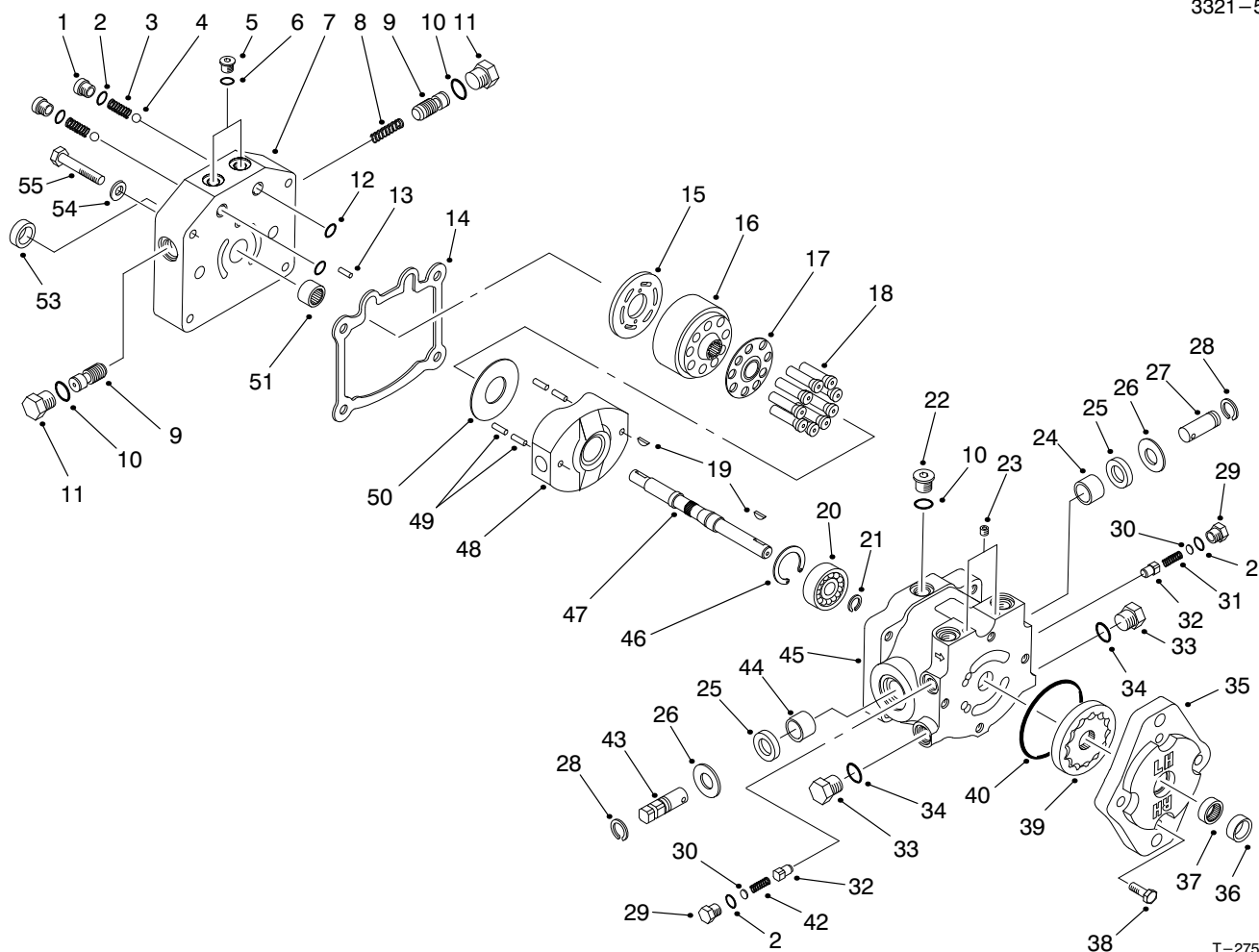


T-1475-4

## HYDRAULIC PUMP INSTALLATION ASM

Ref. No.	Part No.	Description	No. Used
1	85-9610	Hose-Hydraulic	2
2	237-30	O-Ring	4
3	98-0933	Asm-Hydraulic Tube (Incl. Ref. #2)	1
5	98-0938	Asm-Hydraulic Tube (Incl. Ref. #2)	1
6	340-98	Fitting-Hydraulic 90° (Incl. Ref. #2 & 7)	2
7	237-79	O-Ring	3
8	95-5842	Asm-Hydraulic Pump (Incl. Ref. #9)	1
9	3257-32	Key-Woodruff	2
10	3296-23	Nut-Lock	2
11	3241-5	Screw-Set, Sq. Hd.	6
12	3296-29	Nut-Hex.	8
13	27-6600	Spacer-Coupler	8
14	80-8650	Coupler-Rubber	2
15	322-4	Screw-HH	8
16	85-8770	Coupling	1
17	85-9020	Key-Square	1

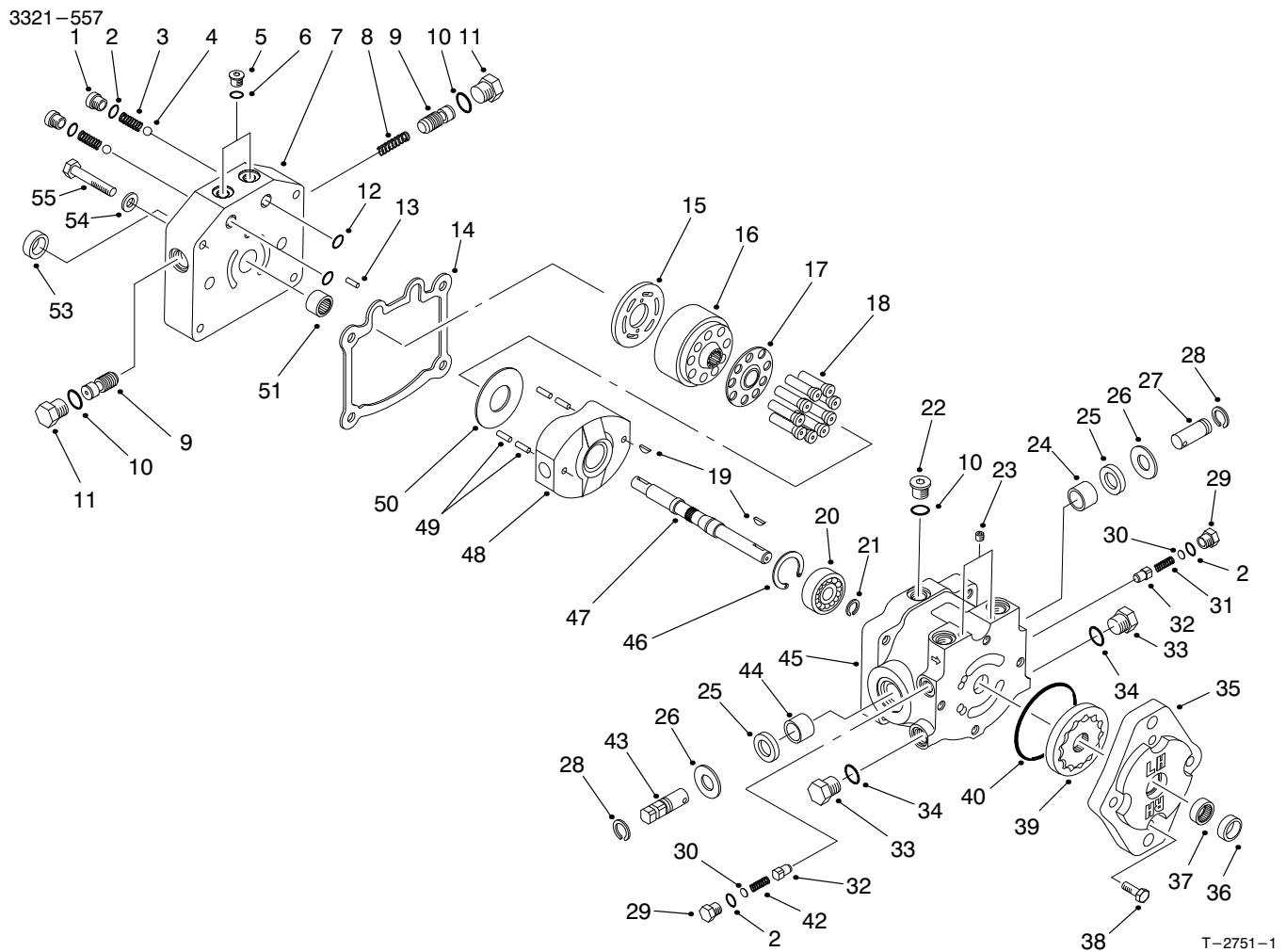
Ref. No.	Part No.	Description	No. Used
18	85-8730	Hub-Engine	1
19	85-8700	Hub-Pump	1
20	3274-5	Screw-HSH	2
21	98-0989	Hose-Hydraulic	1
22	237-42	O-Ring	2
23	340-77	Fitting-Hydraulic 90° (Incl. Ref. #22 & 24)	2
24	237-22	O-Ring	2
25	85-9590	Hose-Hydraulic	1
27	85-8670	Hub-Fan	1
28	85-9560	Fan	1
29	32144-73	Screw-HH	4
30	98-0969	Hose-Hydraulic	1
31	2412-129	Clamp-Hose	2
32	95-0629	Fitting-Hydraulic 90° (Incl. Ref. #33)	1
33	237-80	O-Ring	1
34	354-126	Fitting-Hydraulic 45° (Incl. Ref. #7)	1
35	85-9450	Hose-Hydraulic	1



T-2751-1

## HYDRAULIC PUMP ASM NO. 95-5842

Ref. No.	Part No.	Description	No. Used	Ref. No.	Part No.	Description	No. Used
1	25-2650	Plug	2	23	285-17	Plug-Pipe	2
2	237-86	O-Ring	4	24	88-8190	Bearing-Journal	1
3	25-2640	Spring	2	25	25-3210	Seal-Lip	2
4	25-2490	Ball	2	26	25-2510	Washer	2
5	92-8776	Plug (Incl. Ref. #6)	2	27	88-8180	Shaft-Trunnion	1
6	92-8777	O-Ring	2	28	32151-46	Ring-Retaining	2
7	95-5808	Cap-End	1	29	25-2460	Plug (Incl. Ref. #2)	2
8	95-5815	Spring-Valve, Acceleration	1	30	25-2470	Kit-Shim	2
9	98-0920	Valve-Acceleration	2	31	25-2570	Spring	1
10	237-79	O-Ring	3	32	83-7260	Cone-Charge Relief	2
11	95-5816	Plug (Incl. Ref. #10)	2	33	88-8210	Plug (Incl. Ref. #34)	2
12	237-30	O-Ring	2	34	237-80	O-Ring	2
13	25-2430	Pin	1	35	25-2690	Housing-Pump, Charge	1
14	25-2400	Gasket-Cap, End	1	36	67-8060	Seal-Lip	1
15	88-8160	Plate-Valve	1	37	67-8050	Bearing-Needle	1
16	25-2600	Kit-Cylinder Block (Incl. Ref. #17-18)	1	38	322-4	Screw-HH	4
17		Retainer-Slipper	1	39	95-5812	Asm-Gerotor	1
18		Asm-Piston	9	40	237-95	O-Ring	1
19	3257-32	Key-Woodruff	2	42	25-2480	Spring	1
20	95-5809	Ball Bearing	1	43	25-2500	Shaft-Trunnion	1
21	95-5813	Ring-Retaining	1	44	252-82	Bearing-Needle	1
22	353-988	Plug (Incl. Ref. #10)	1	45	88-8170	Asm-Housing, Variable (Incl. Ref. #24, 25, & 44)	1
				46	32120-11	Ring-Retaining	1

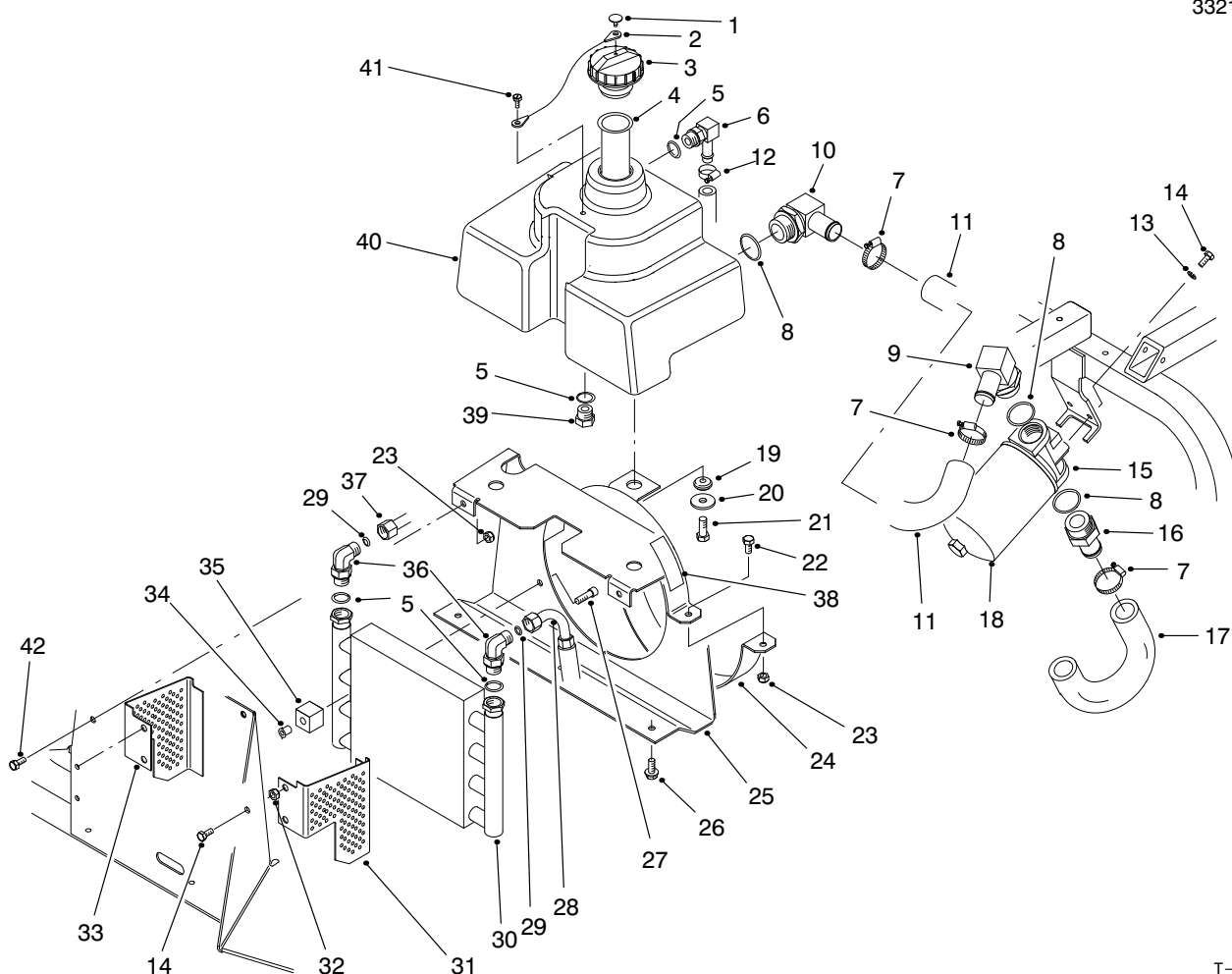


## HYDRAULIC PUMP ASM NO. 95-5842 (Continued)

Ref. No.	Part No.	Description	No. Used
47	95-5810	Shaft	1
48	25-2450	Swashplate	1
49	32121-91	Pin-Spring	4
50	25-2380	Plate-Thrust	1
51	46-8400	Bearing-Roller	1
53	88-8230	Seal-Lip	1
54		Washer	1

Ref. No.	Part No.	Description	No. Used
55	323-45	Screw-HH	4
*	25-3180	Kit-Valve, Check (Incl. Ref. #1-4)	1
*	49-8520	Kit-Implement Relief (Incl. Ref. #2 & 29-32)	1
*	49-8510	Kit-Relief, Charge (Incl. Ref. #2, 29-30 & 41-42)	1

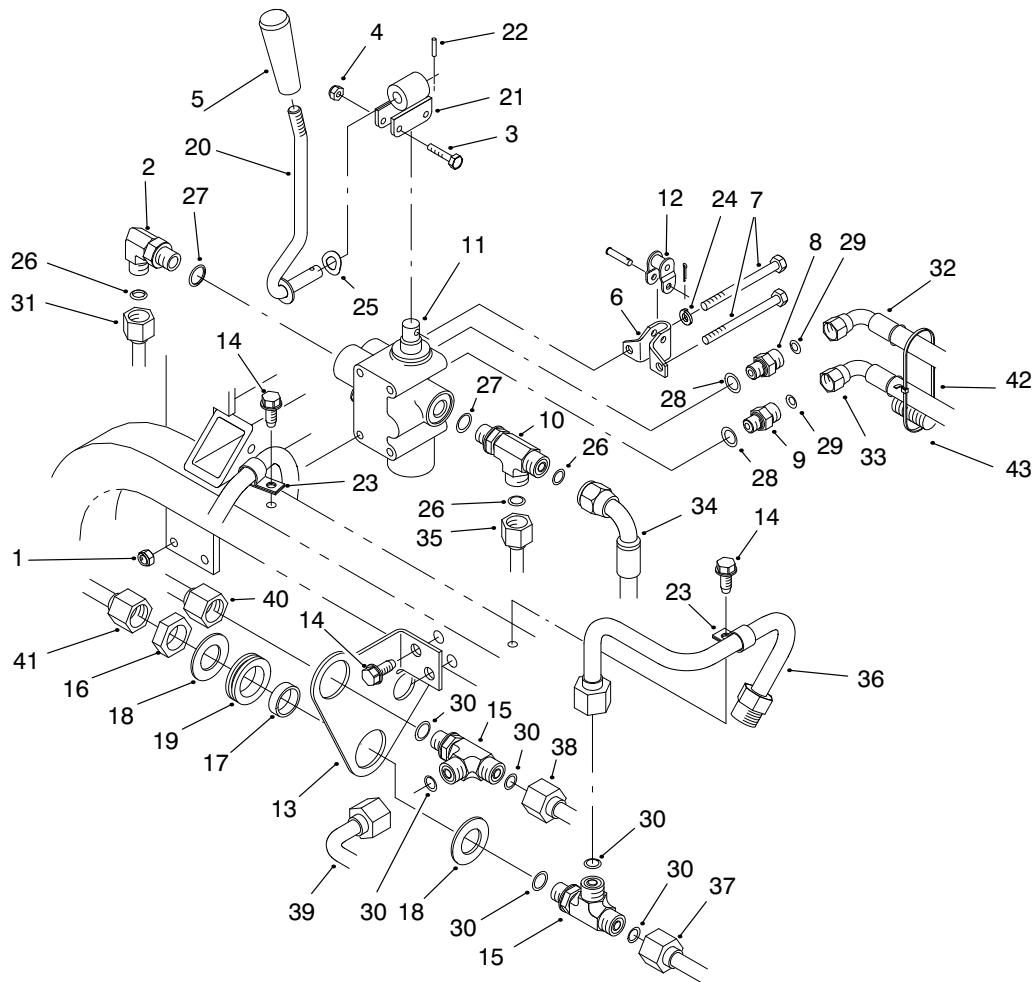
\*Not Illustrated



T-1473-4

## HYDRAULIC RESERVOIR ASM

Ref. No.	Part No.	Description	No. Used	Ref. No.	Part No.	Description	No. Used
1	2410-73	Retainer-Teather	1	22	322-2	Screw-HH	2
2	75-0540	Teather	1	23	3296-29	Nut-Lock	4
3	93-4365	Asm-Reservoir Cap (Incl. Ref. #1 & 2)	1	24	85-8570	Shroud-Lower	1
4	85-9510	Screen-Filler	1	25	98-8151	Asm-Cooler Mount (Incl. Ref. #38)	1
5	237-79	O-Ring	4	26	32144-11	Screw-HWHTF	3
6	354-120	Fitting-Hydraulic 90° (Incl. Ref. #5)	1	27	3274-86	Screw-HSH	2
7	2412-129	Clamp-Hose	3	28	85-9590	Hose-Hydraulic	1
8	237-146	O-Ring	3	29	237-22	O-Ring	2
9	353-987	Fitting-Hydraulic 90° (Incl. Ref. #8)	1	30	85-9460	Cooler-Oil	1
10	98-0971	Fitting-Hydraulic 90° (Incl. Ref. #8)	1	31	88-8120	Asm-Screen, L.H. (Incl. Ref. #32)	1
11	98-0970	Hose-Hydraulic	1	32	32148-6	Nut-Clinch	4
12	2412-36	Clamp-Hose	1	33	88-8110	Asm-Screen, R.H. (Incl. Ref. #32)	1
13	3253-3	Washer-Lock	2	34	85-9670	Nut-T	2
14	321-4	Screw-HH	6	35	85-9550	Clamp-Rubber	2
15	68-8990	Asm-Hydraulic Filter Head	1	36	340-18	Fitting-Hydraulic 90° (Incl. Ref. #5 & 29)	2
16	354-73	Fitting-Hydraulic Straight (Incl. Ref. #8)	1	37	98-0987	Tube-Hydraulic	1
17	98-0969	Hose-Hydraulic	1	38	93-7272	Decal-Caution	2
18	23-9740	Element-Hydraulic Filter	1	39	353-550	Plug-Hydraulic (Incl. Ref. #5)	1
19	240-11	Grommet	3	40	92-8959	Reservoir-Hydraulic	1
20	63-8410	Washer-Flat	3	41	57-5420	Screw-Shoulder	1
21	323-5	Screw-HH	3	42	322-3	Screw-HH	2

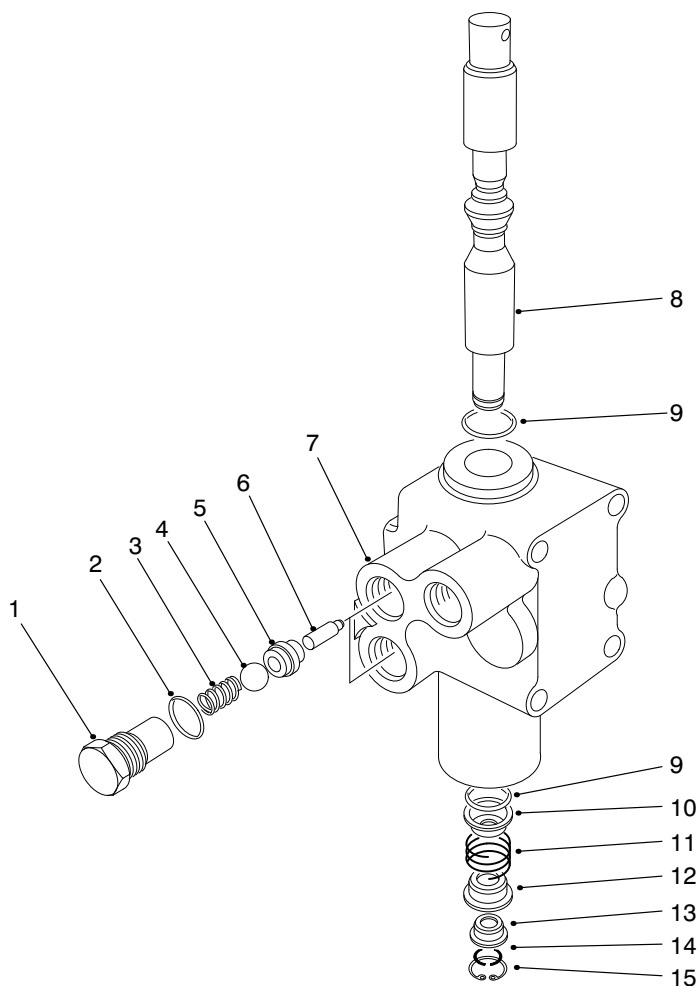


T-2793-3

## HYDRAULIC PLUMBING ASM

Ref. No.	Part No.	Description	No. Used
1	3296-8	Nut-Lock	3
2	340-77	Fitting-Hydraulic 90° (Incl. Ref. #26 & 27)	1
3	3290-360	Screw-HH	2
4	3296-2	Nut-Lock	2
5	233-39	Knob-Lever	1
6	88-8480	Bracket-Pivot	1
7	321-23	Screw-HH	4
8	95-9720	Fitting-Hydraulic Orificed (Incl. Ref. #28 & 29)	1
9	340-92	Fitting-Hydraulic Straight (Incl. Ref. #28 & 29)	1
10	340-86	Fitting-Hydraulic Tee (Incl. Ref. #26 & 27)	1
11	43-1710	Asm-Valve	1
12	2710-20	Link-Offset	1
13	98-0963	Bracket-Bulkhead	1
14	32144-11	Screw-HWHTF	4
15	340-121	Fitting-Hydraulic Tee (Incl. Ref. #30)	2
16	340-127	Nut-Bulkhead	2
17	69-8960	Spacer	2
18	69-8930	Washer	4
19	240-5	Grommet	2

Ref. No.	Part No.	Description	No. Used
20	99-1632	Lever-Lift	1
21	98-8159	Pivot-Welded	1
22	32121-73	Pin-Spring	1
23	2412-138	Clamp-R	2
24	3253-3	Washer-Lock	1
25	3290-477	Washer-Curved	1
26	237-22	O-Ring	3
27	237-42	O-Ring	2
28	237-78	O-Ring	2
29	237-21	O-Ring	2
30	237-30	O-Ring	6
31	98-0987	Tube-Hydraulic	1
32	85-9580	Hose-Hydraulic	1
33	85-9570	Hose-Hydraulic	1
34	98-0989	Hose-Hydraulic	1
35	98-0988	Tube-Hydraulic	1
36	98-0938	Tube-Hydraulic	1
37	98-0937	Tube-Hydraulic	1
38	98-0936	Tube-Hydraulic	1
39	98-0932	Tube-Hydraulic	1
40	98-0935	Tube-Hydraulic	1
41	98-0934	Tube-Hydraulic	1
42	3290-378	Tie-Cable	1
43	98-0994	Harness-Wire	1



T-0428

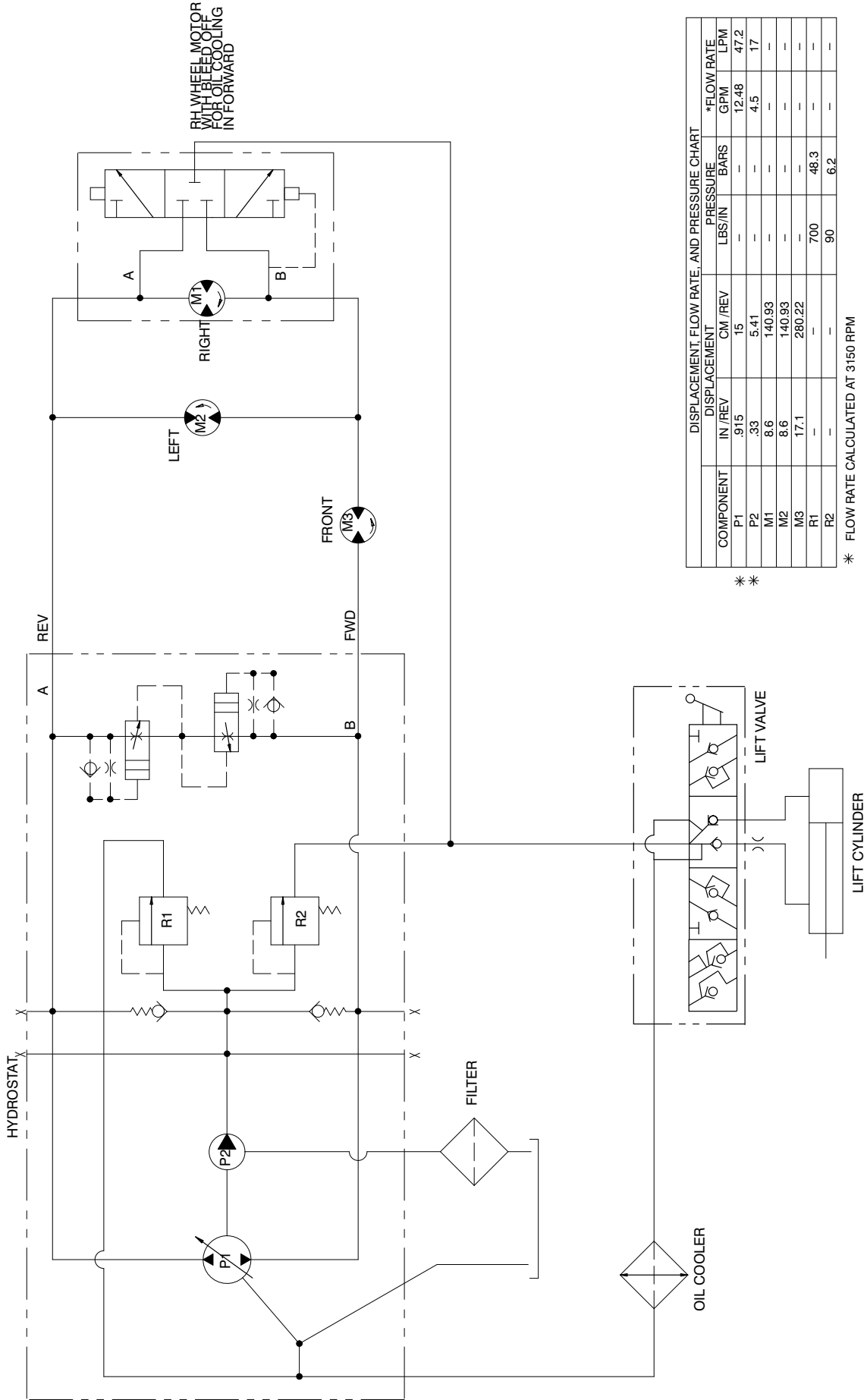
## CONTROL VALVE ASM NO. 43-1710

Ref. No.	Part No.	Description	No. Used
1	22-8330	Plug	2
2	237-42	O-Ring	2
3	22-8340	Spring	2
4	22-8350	Ball	2
5	22-8370	Seat-Check Valve	2
6	22-8360	Pin-Cam	2
†7		Body	1
8	22-8420	Spool	1

Ref. No.	Part No.	Description	No. Used
9	22-8500	O-Ring	2
10	22-8380	Retainer-Spring	1
11	22-8410	Spring	1
12	22-8390	Spring Retainer	1
13	22-8400	Spacer-Float	1
14	22-8480	Spring-Ring Spool	1
15	22-8490	Ring-Retaining	1

†Not Serviced Separately

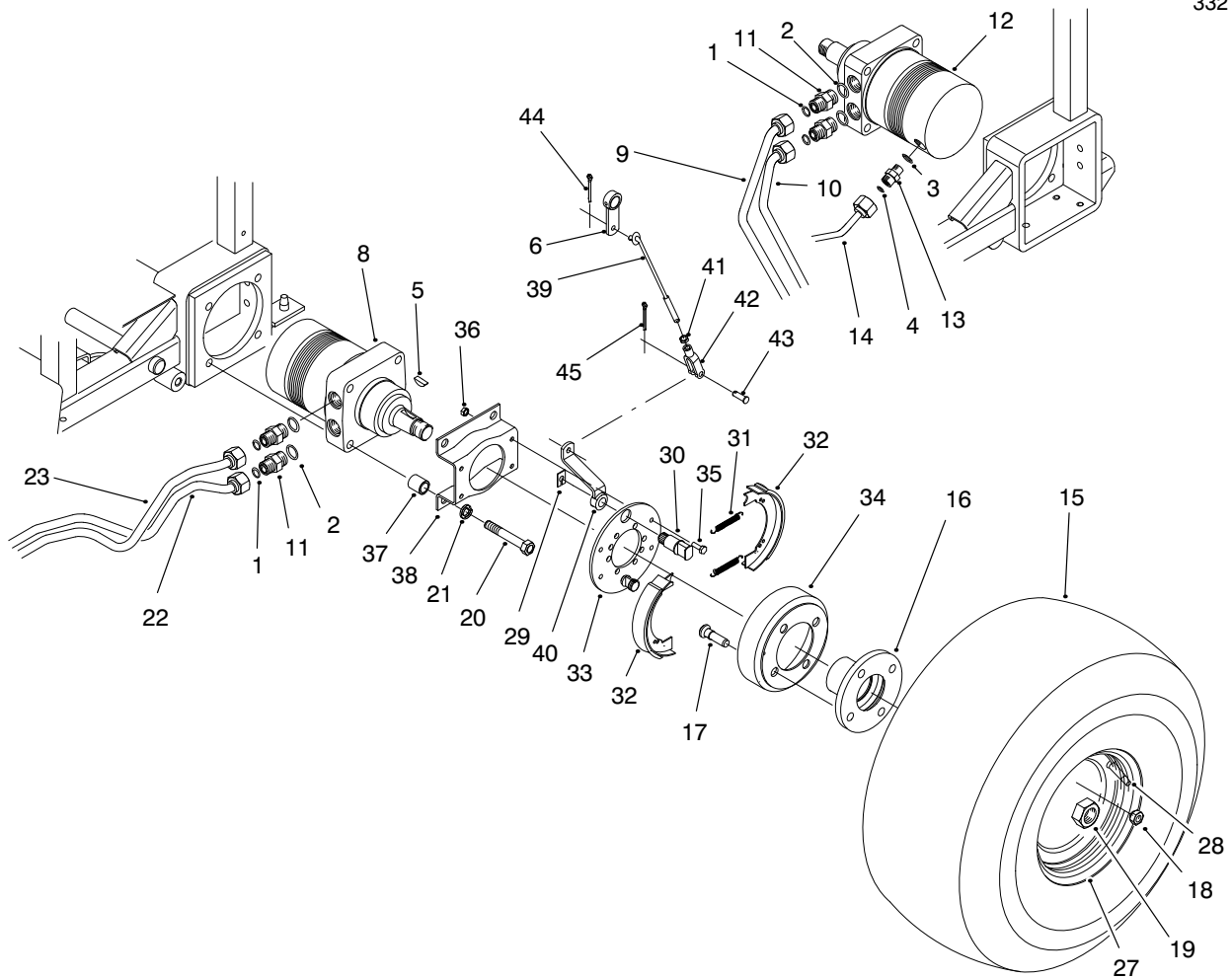
# HYDRAULIC SCHEMATIC



COMPONENT	DISPLACEMENT			PRESSURE			*FLOW RATE	
	IN /REV	CM /REV	LBS/IN	IN/IN	BARS	GPM	LPM	
P1	.915	15	-	-	-	12.48	47.2	
P2	.33	5.41	-	-	-	4.5	17	
M1	8.6	140.93	-	-	-	-	-	
M2	8.6	140.93	-	-	-	-	-	
M3	17.1	280.22	-	-	-	-	-	
R1	-	-	700	-	48.3	-	-	
R2	-	-	90	-	6.2	-	-	

\*\*

\* FLOW RATE CALCULATED AT 3150 RPM



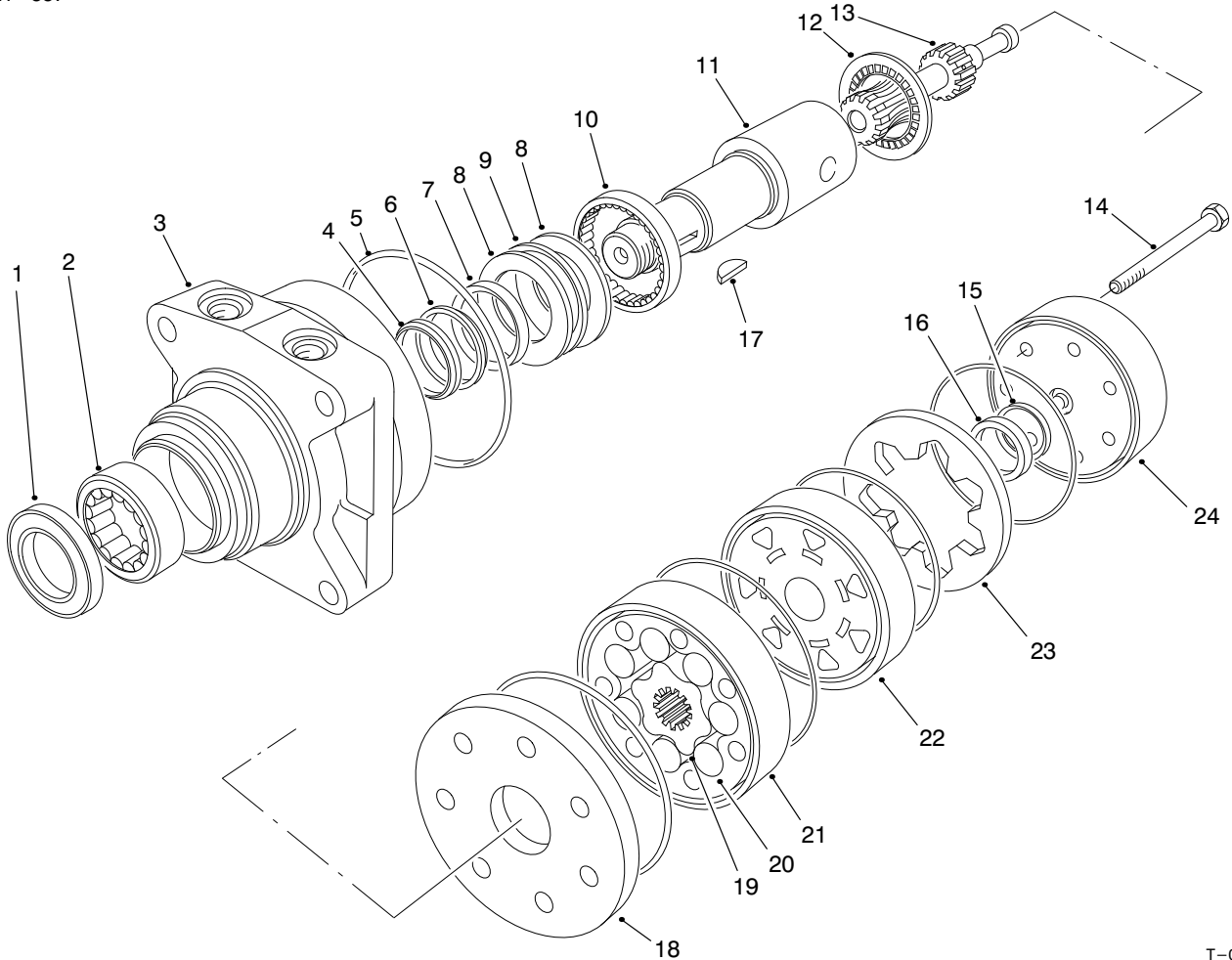
T-2795

## REAR WHEEL ASM

Ref. No.	Part No.	Description	No. Used
1	237-30	O-Ring	4
2	237-80	O-Ring	4
3	237-42	O-Ring	1
4	237-22	O-Ring	1
5	3257-42	Key-Woodruff	1
6	83-9310	Lever-Brake	2
8	97-3055	Asm-Hydraulic Motor (Incl. Ref. #5)	1
9	98-0934	Asm-Hydraulic Tube	1
10	98-0935	Asm-Hydraulic Tube	1
11	340-6	Fitting-Hydraulic Straight (Incl. Ref. #1 & 2)	4
12	98-0959	Asm-Hydraulic Motor (Incl. Ref. #5)	1
13	340-2	Fitting-Hydraulic Straight (Incl. Ref. #3 & 4)	1
14	98-0988	Asm-Hydraulic Tube	1
15	85-8290	Tire	2
*	116973	Tire-Turf (Optional)	2
16	93-6838	Hub-Wheel	2
17	85-6540	Stud-Drive	8
18	242-50	Nut-Lug	8
19	26-3790	Nut-Lock	2
20	325-13	Screw-HH	8

Ref. No.	Part No.	Description	No. Used
21	3253-7	Washer-Lock	8
22	98-0937	Asm-Hydraulic Tube	1
23	98-0936	Asm-Hydraulic Tube	1
27	94-6116	Rim	2
28	232-35	Valve-Stem	2
29	32120-47	Retainer	2
30	70-9860	Shaft-Cam	2
31	70-9880	Spring-Extension	4
32	70-9840	Shoe-Brake	4
33	70-9870	Plate-Brake Backing	2
34	10-6850	Drum-Brake	2
35	321-4	Screw-HH	8
36	3296-42	Nut-Lock	8
37	92-1715	Spacer	8
38	84-2000	Bracket-Brake	2
39	95-5824	Rod-Adjustment	2
40	93-6850	Lever-Brake	2
41	3220-2	Nut-Jam	2
42	282-2	Clevis-Adjustment	2
43	283-1	Pin-Clevis	2
44	3272-6	Pin-Cotter	2
45	3272-10	Pin-Cotter	2
*	71-1500	Asm-Brake (Incl. Ref. #29-33)	2

\*Not Illustrated



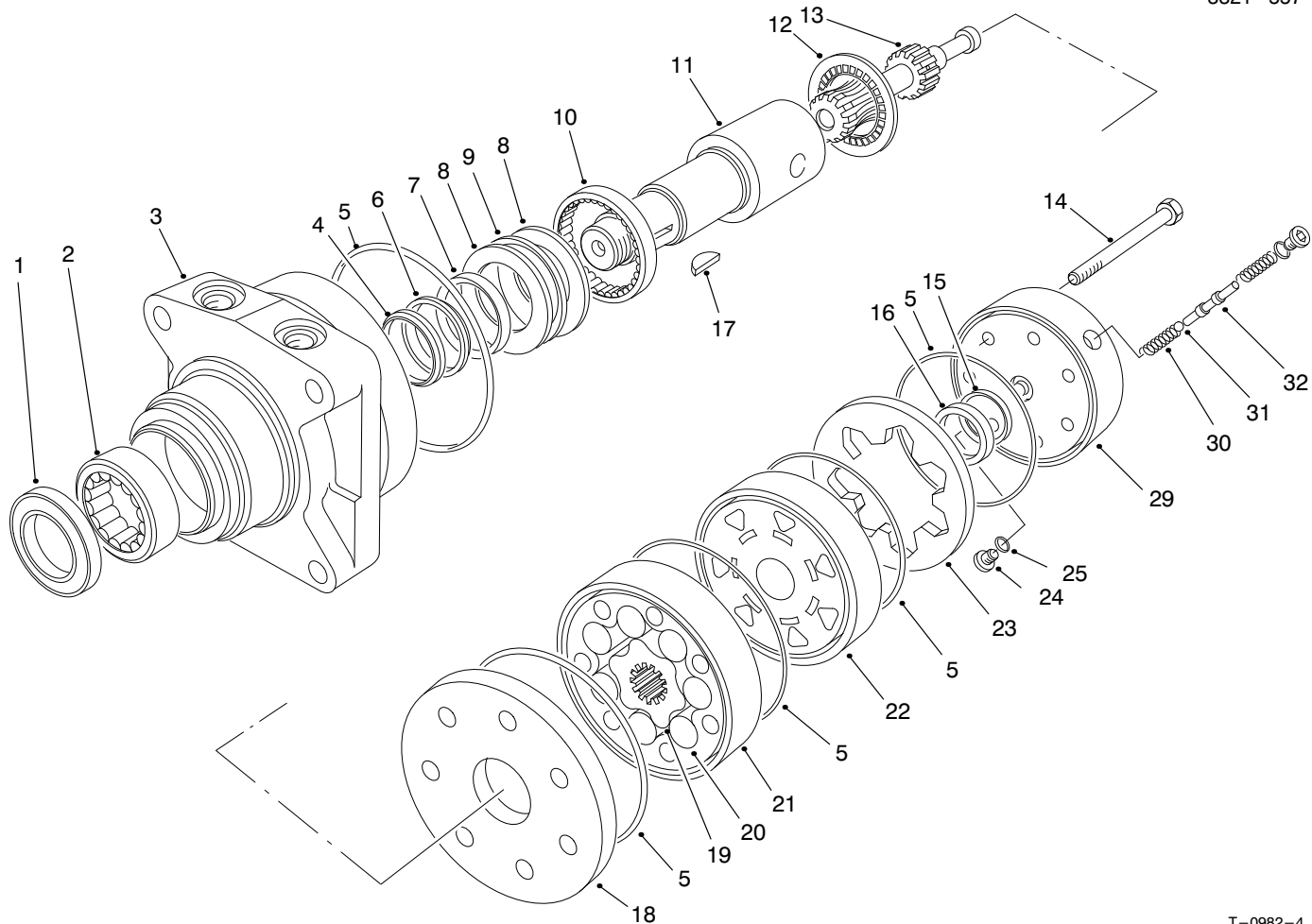
T-0983-2

## LEFT REAR HYDRAULIC MOTOR ASM NO. 97-3055

Ref. No.	Part No.	Description	No. Used
1		Seal-Dirt & Water	1
2		Bearing	1
3		Housing	1
4		Washer-Backup	1
5		Seal-Rings	5
6		Washer-Backup	1
7		Seal-Inner	1
8		Washer-Thrust	2
9		Bearing-Thrust	1
10		Bearing	1
11	76-0860	Shaft-Coupling	1
12	76-0850	Bearing-Thrust	1
13		Link-Drive	1
14		Screw-HH	7
15		Seal-Commutator	1
16		Commutator	1

Ref. No.	Part No.	Description	No. Used
17	3257-42	Key-Woodruff	1
18	76-0870	Plate-Wear	1
19		Rotor	1
20		Vane	7
21		Stator	1
22	76-0840	Manifold	1
23		Ring-Commutator	1
24	76-0940	Asm-Cover, End	1
*		Rotor Set (Incl. Ref. #19-21)	1
*	76-0880	Asm-Commutator (Incl. Ref. #15, 16 & 23)	1
*	94-8178	Kit-Seal (Incl. Ref. #1, 4-7 & 15)	1
*	76-0810	Asm-Housing (Incl. Ref. #2, 3 & 8-10)	1

\*Not Illustrated



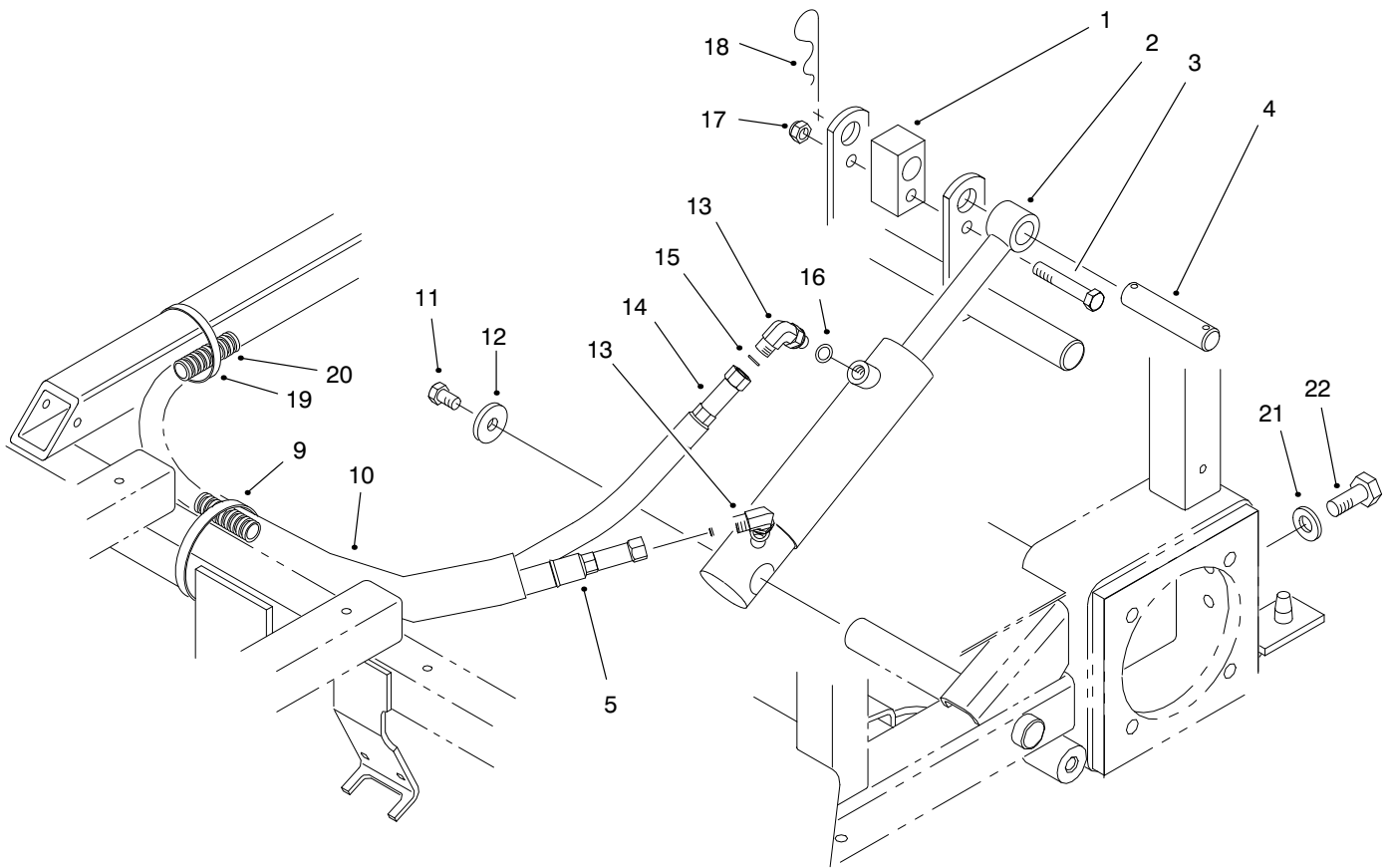
T-0982-4

## RIGHT REAR HYDRAULIC MOTOR ASM NO. 98-0959

Ref. No.	Part No.	Description	No. Used
1		Seal-Dirt & Water	1
2		Bearing	1
3		Housing	1
4		Washer-Backup	1
5		Seal-Rings	5
6		Washer-Backup	1
7		Seal-Inner	1
8		Washer-Thrust	2
9		Bearing-Thrust	1
10		Bearing	1
11	76-0860	Shaft-Coupling	1
12	76-0850	Bearing-Thrust	1
13		Link-Drive	1
14		Screw-HH	7
15		Seal-Commutator	1
16		Commutator	1
17	3257-42	Key-Woodruff	1
18	76-0870	Plate-Wear	1
19		Rotor	1

Ref. No.	Part No.	Description	No. Used
20		Vane	7
21		Stator	1
22		Manifold	1
23		Ring-Commutator	1
24	353-990	Plug	2
25		O-Ring	2
29	76-0890	Asm-Cover End (Incl. Ref. #24-25 & 30-32)	1
30		Spring	2
31		Ball	1
32		Valve-Shuttle	1
*		Rotor Set (Incl. Ref. #19-21)	1
*	76-0880	Asm-Commutator (Incl. Ref. #15, 16 & 23)	1
*	94-8178	Kit-Seal (Incl. Ref. #1, 4-7 & 15)	1
*	76-0810	Asm-Housing (Incl. Ref. #2, 3 & 8-10)	1

\*Not Illustrated

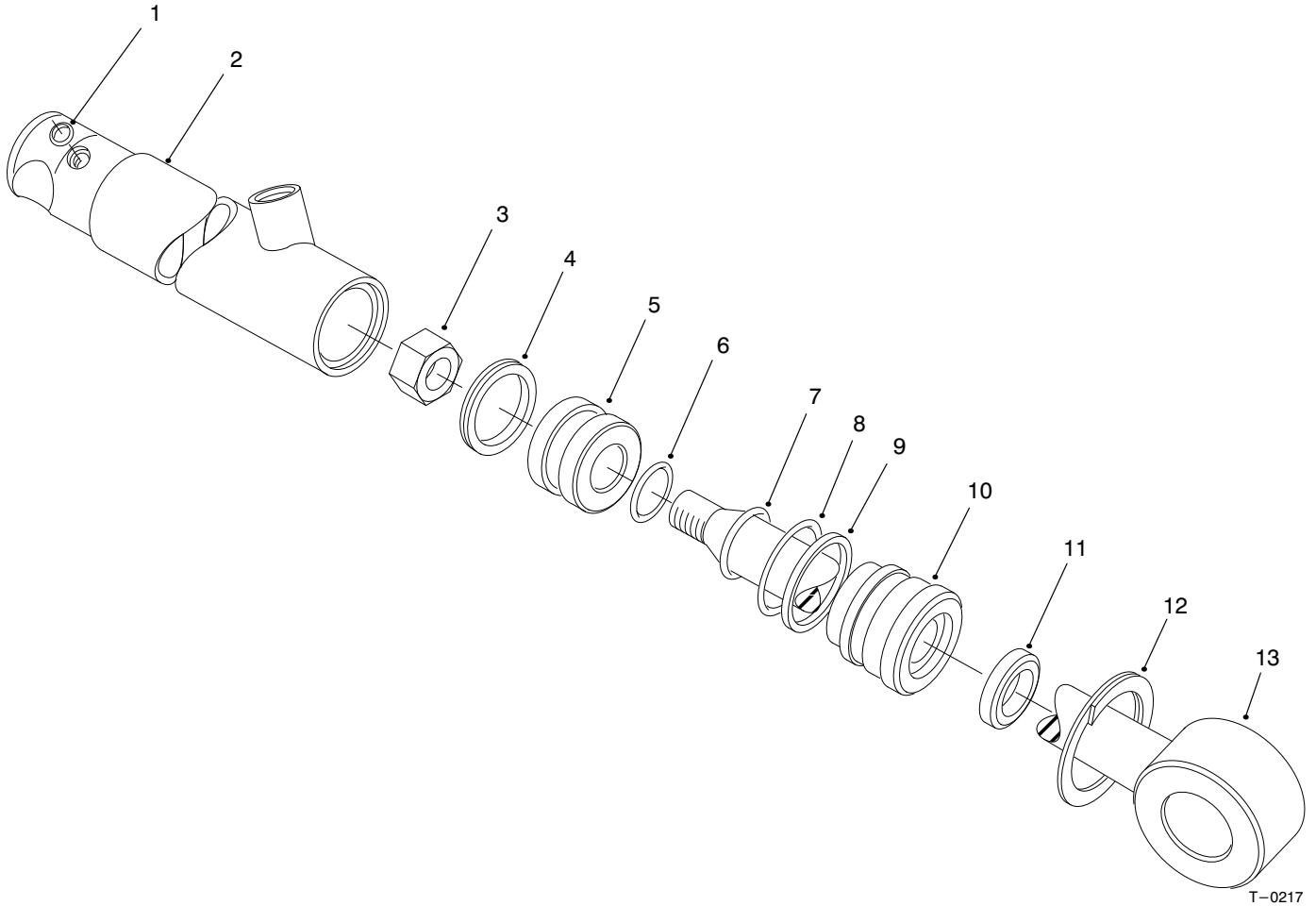


T-2752-3

### LIFT ASM

Ref. No.	Part No.	Description	No. Used
1	85-9160	Spacer	1
2	83-7000	Asm-Cylinder	1
3	323-11	Screw-HH	1
4	85-9170	Pin-Cylinder	1
5	85-9580	Hose-Hydraulic	1
9	3334-945	Tie-Cable	1
10	56-7981	Sleeve-Protective	1
11	323-34	Screw-HH	1
12	53-6380	Washer	1
13	340-142	Fitting-Hydraulic 90° (Incl. Ref. #15 & 16)	2

Ref. No.	Part No.	Description	No. Used
14	85-9570	Hose-Hydraulic	1
15	237-21	O-Ring	2
16	237-78	O-Ring	2
17	3296-39	Nut-Lock	1
18	3290-256	Pin-Hair	2
19	3290-379	Tie-Wire	1
20	98-0994	Harness-Wire	1
21	3256-26	Washer-Flat	4
22	325-5	Screw-HH	4

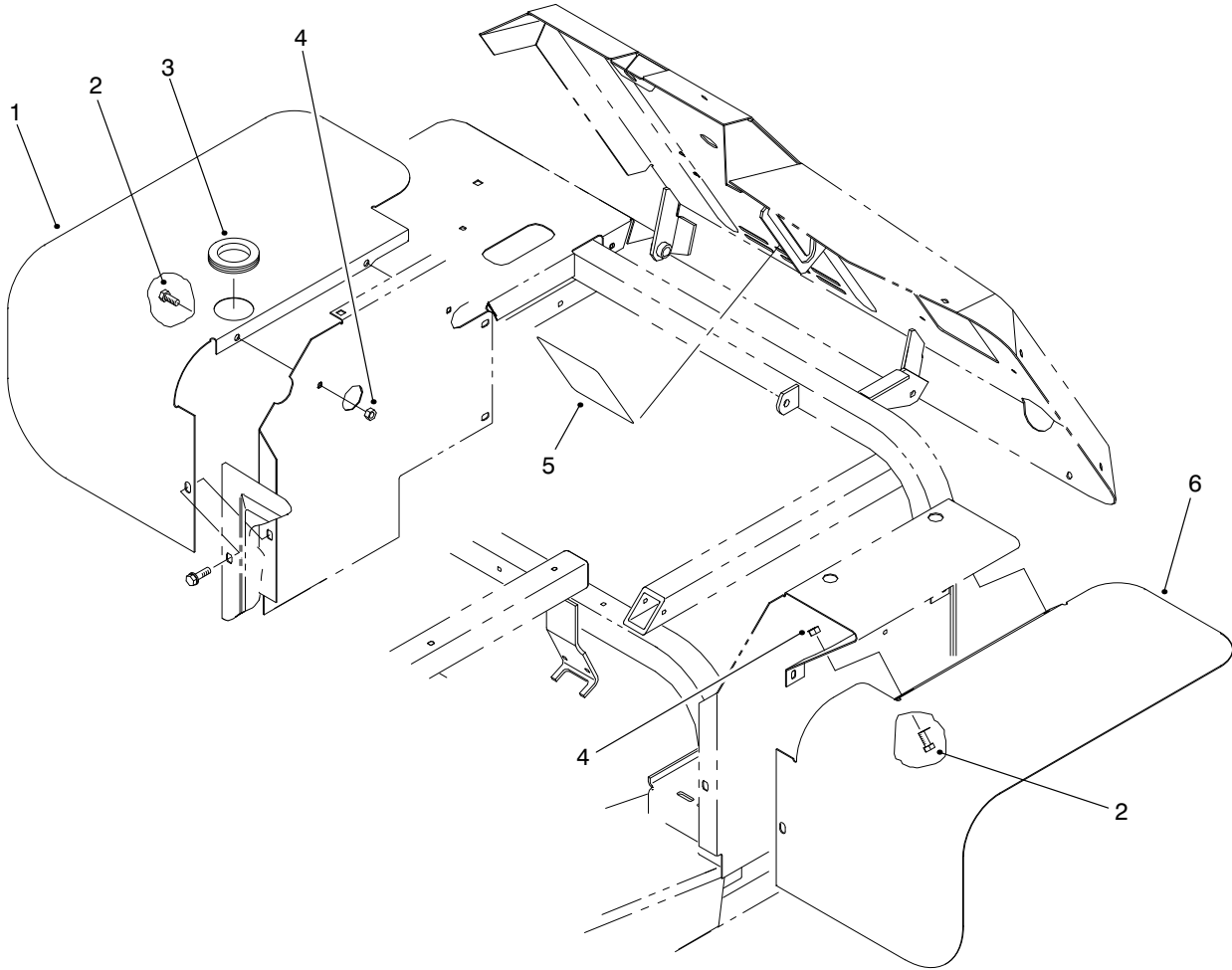


T-0217

## HYDRAULIC LIFT CYLINDER ASM NO. 83-7000

Ref. No.	Part No.	Description	No. Used
1	237-78	O-Ring	2
2	43-5260	Barrel w/Clevis & Ports	1
3	32152-10	Nut	1
4		Uniring-Grooved	1
5	70-2780	Piston	1
6		O-Ring	1
7		Poly-Pack	1
8		O-Ring	1

Ref. No.	Part No.	Description	No. Used
9		Back-Up	1
10	70-2770	Head	1
11		Seal-Dust	1
12	43-5220	Ring-Retaining	1
13	43-5230	Shaft with Clevis	1
14	83-7250	Kit-Seal Repair (Incl. Ref. #4, 6-9 & 11)	1

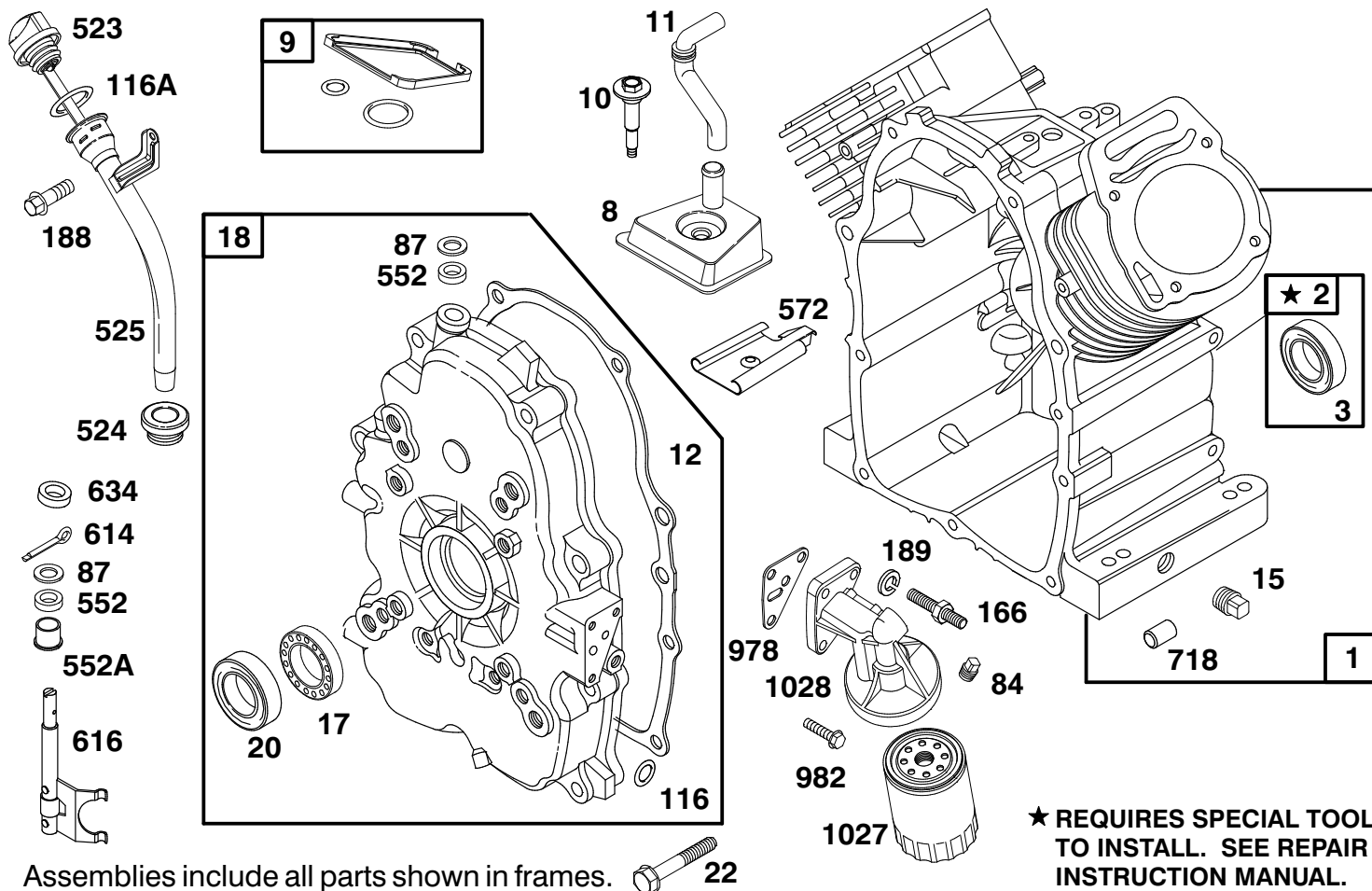


T-2935

## FENDER ASM-EUROPE

Ref. No.	Part No.	Description	No. Used
1	98-0997	Fender-RH	1
2	322-3	Screw-HH	4
3	240-2	Grommet	1

Ref. No.	Part No.	Description	No. Used
4	3296-29	Nut-Lock	4
5	93-9081	Decal-Blank	1
6	98-0998	Fender-LH	1

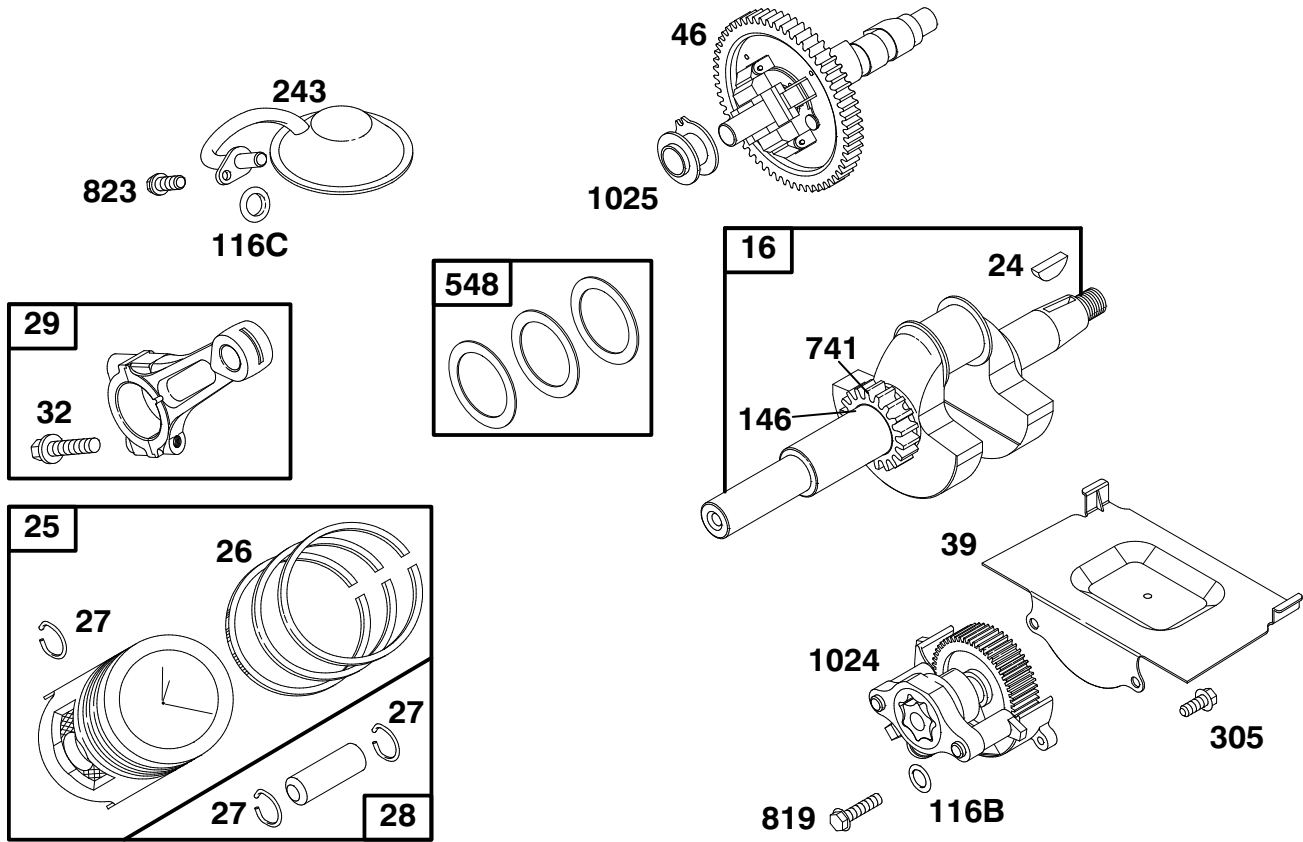


## ENGINE BRIGGS & STRATTON MODEL 350447-1116-E1

Ref. No.	Part No.	Description	No. Used
1	808441	Cylinder Assembly	1
2	808534	Bearing—Cylinder	1
*3	805101	Seal—Oil	1
8	807795	Breather Assembly	1
*9	807688	Gasket—Breather	1
10	805751	Screw—Hex. Washer Head	1
11	806083	Tube—Breather	1
12	806190	Gasket—Crankcase Cover	1
15	94239	Plug—Oil Drain	1
17	805754	Bearing—Ball	1
18	808502	Cover—Crankcase	1
*20	805049	Seal—Oil	1
22	805696	Screw—Crankcase Cover	1
84	91488	Plug—Pipe	1
*87	805054	Seal—Governor Shaft	1
116	806191	O-Ring (Crankcase Cover)	1
*116A	805386	O-Ring (Dipstick)	1
166	805073	Stud—Oil Filter Adapter	1

Ref. No.	Part No.	Description	No. Used
188	805247	Screw—Hex.	1
189	805449	Lockwasher	1
523	807977	Dipstick	1
*524	281370	Seal—Fill Tube	1
525	807584	Tube—Oil Fill	1
552	805412	Bushing—Governor Shaft	1
552A	805413	Bushing—Governor Shaft	1
572	805197	Baffle—Breather	1
614	806096	Pin—Cotter	1
616	807596	Fork—Governor	1
634	805416	Washer—Governor Shaft	1
718	805103	Dowel—Crankcase	1
*978	805250	Gasket—Oil Filter Adapter	1
982	805030	Screw—Hex.	1
1027	492932	Filter—Oil	1
1028	808325	Adapter—Oil Filter	1

\*Included in Gasket Set – Part No. 808389.



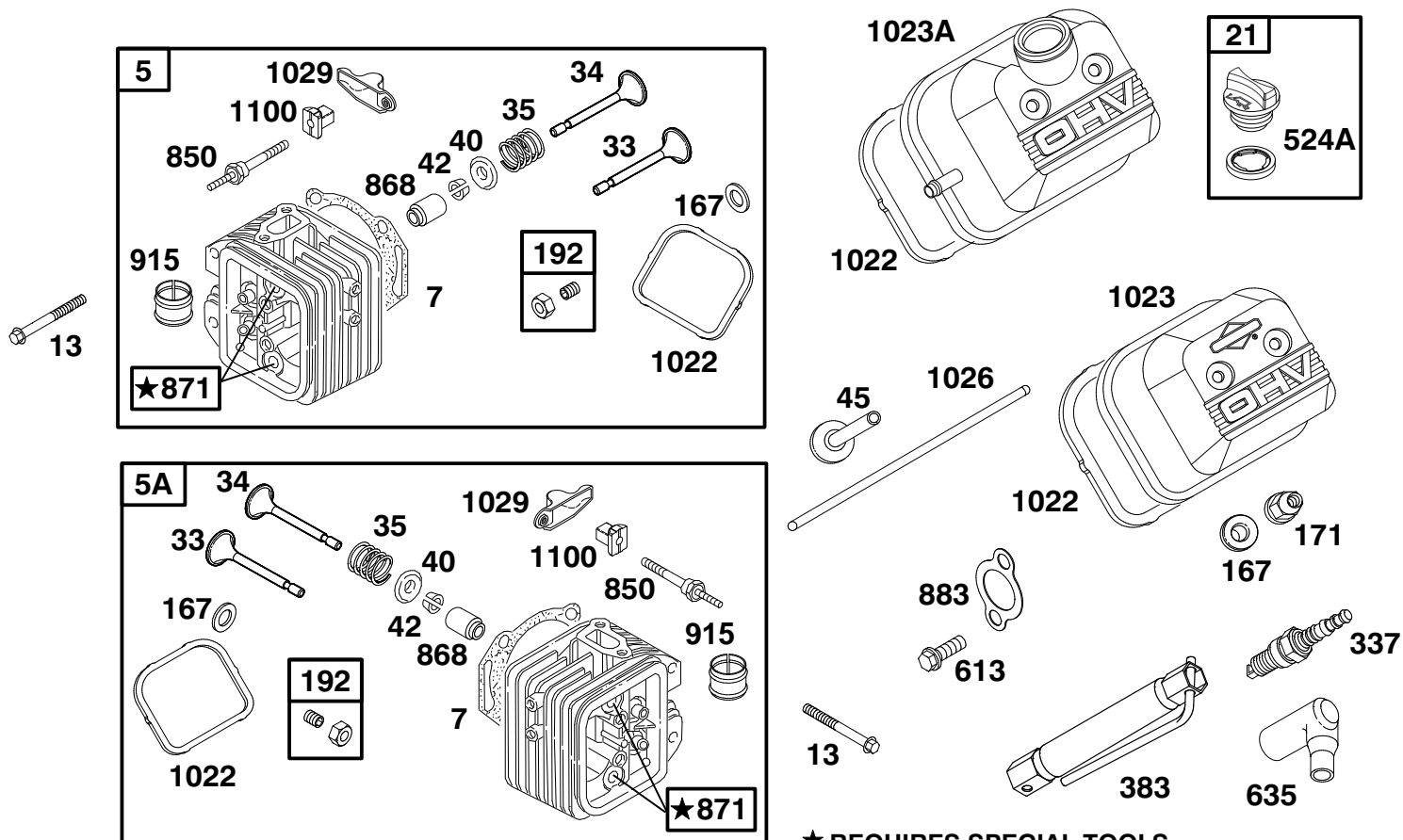
Assemblies include all parts shown in frames.

## ENGINE BRIGGS & STRATTON MODEL 350447-1116-E1

Ref. No.	Part No.	Description	No. Used
16	692089	Crankshaft	1
24	806066	Key-Flywheel	1
25	808326	Piston Assembly (Standard)	1
	808336	Piston Assembly (.010 O.S.)	1
	808337	Piston Assembly (.020 O.S.)	1
	808338	Piston Assembly (.030 O.S.)	1
26	807889	Ring Set-Piston (Standard)	1
	807994	Ring Set-Piston (.010 O.S.)	1
	807995	Ring Set-Piston (.020 O.S.)	1
	807996	Ring Set-Piston (.030 O.S.)	1
27	805099	Lock-Piston Pin	1
28	807866	Piston Pin Assembly	1
29	807900	Rod-Connecting (Standard)	1
	807803	Rod-Connecting (.020 U.S.)	1

Ref. No.	Part No.	Description	No. Used
32	805395	Screw-Connecting Rod	1
39	805654	Deflector-Oil	1
46	807542	Gear-Cam	1
*116B	805058	O-Ring (Oil Pump)	1
*116C	805316	O-Ring (Pick-Up Tube)	1
146	808095	Key-Timing	1
243	807598	Screen-Oil Pump	1
548	807625	Washer Set	1
305	805406	Screw-Hex.	1
741	805984	Gear-Timing	1
819	805057	Screw-Hex.	1
823	805317	Screw-Hex.	1
1024	807644	Oil Pump Assembly	1
1025	805313	Slider-Governor	1

\*Included in Gasket Set-Part No. 808389.



★ REQUIRES SPECIAL TOOLS  
TO INSTALL. SEE REPAIR  
INSTRUCTION MANUAL.

Assemblies include all parts shown in frames.

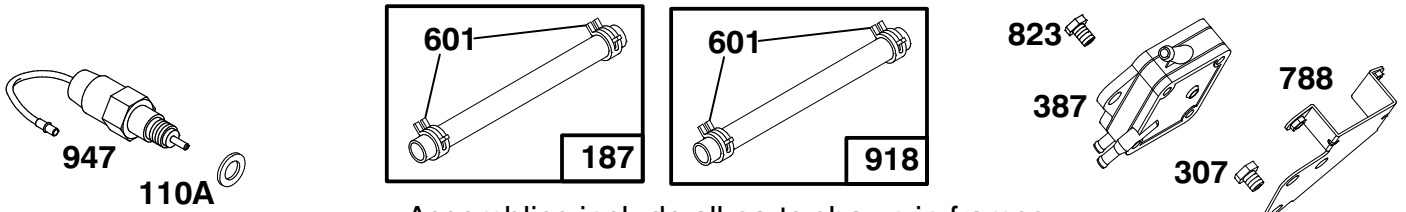
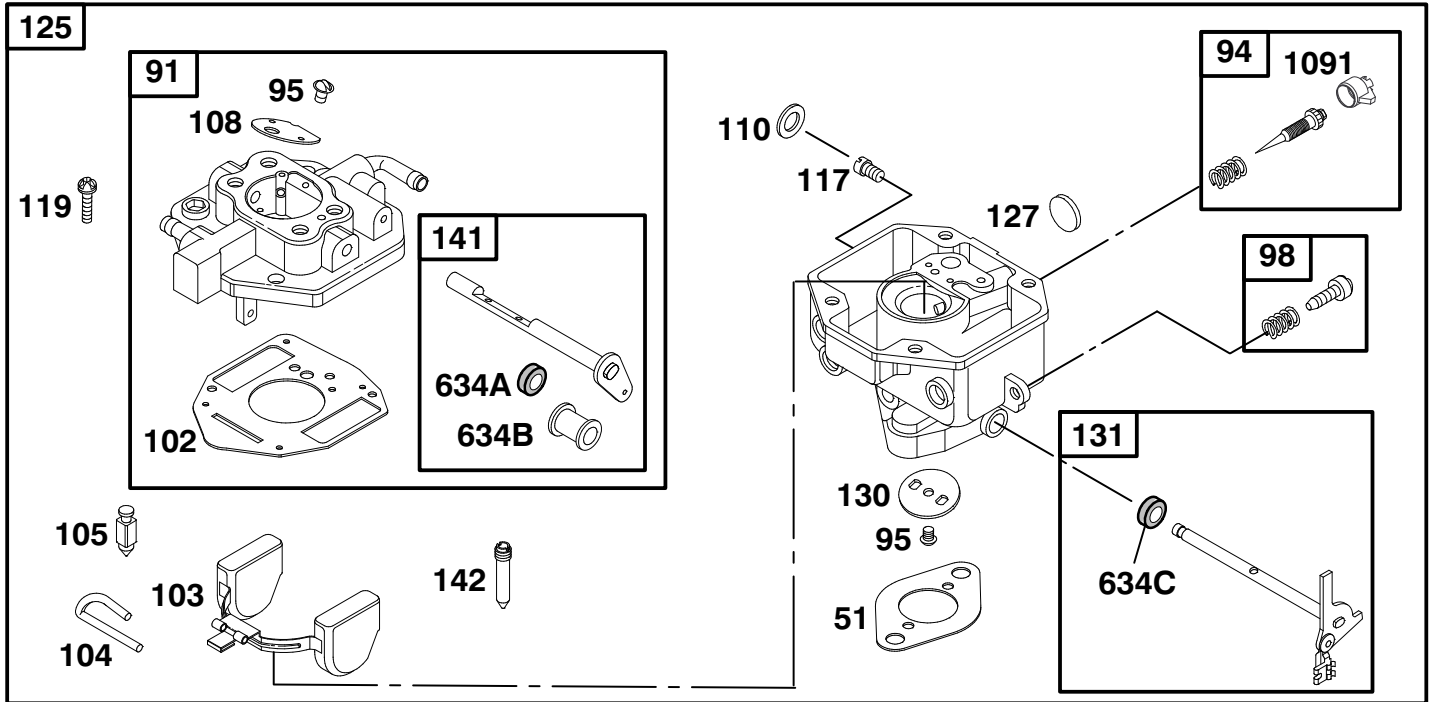
## ENGINE BRIGGS & STRATTON MODEL 350447-1116-E1

Ref. No.	Part No.	Description	No. Used
5	808383	Head—Cylinder (Cyl. #1)	1
5A	808384	Head—Cylinder (Cyl. #2)	1
*‡7	806086	Gasket—Cylinder Head	1
13	805097	Screw—Cylinder Head	1
21	491832	Dipstick/Fill Plug	1
33	807681	Valve—Exhaust	1
34	807680	Valve—Intake	1
35	805937	Spring—Valve	1
40	805092	Retainer—Valve Spring	1
42	807683	Retainer—Valve	1
45	262679	Tappet—Valve	1
*‡167	805420	Washer—Valve Cover	1
‡171	805019	Nut—Nylock	1
192	807623	Screw—Valve Adjustment	1
337	496018	Plug—Spark	1
383	19374	Wrench—Spark Plug	1
*‡524A	271983	Seal—Filler Plug	1

Ref. No.	Part No.	Description	No. Used
613	805158	Screw—Hex.	1
635	805529	Elbow—Spark Plug	1
850	806037	Stud—Rocker Arm	1
868	805094	Seal—Valve Guide	1
871	805084	Guide—Valve	1
*‡883	805024	Gasket—Exhaust	1
915	805083	Liner—Port	1
*‡1022	806039	Gasket—Valve Cover	1
1023	805100	Cover—Valve	1
1023A	808032	Cover—Valve	1
1026	805352	Rod—Push (Intake Valve)	1
		<b>Note:</b> 805617 Rod—Push (Exhaust Valve)	1
1029	806036	Arm—Rocker	1
1100	806038	Pivot—Rocker Arm	1

\*Included in Gasket Set—Part No. 808389.

‡Included in Valve Overhaul Kit—Part No. 8083921



Assemblies include all parts shown in frames.

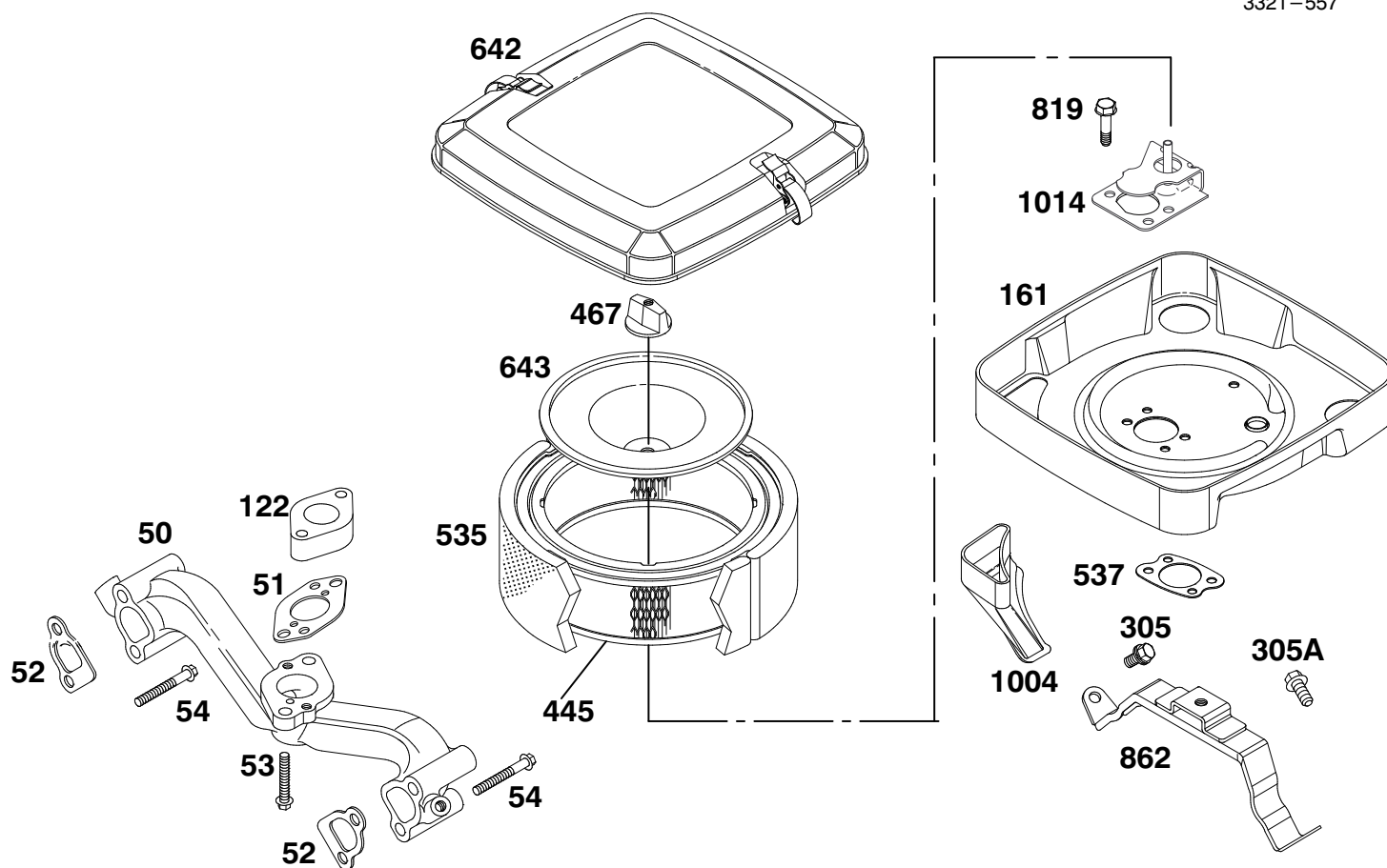
## ENGINE BRIGGS & STRATTON MODEL 350447-1116-E1

Ref. No.	Part No.	Description	No. Used
*51	805700	Gasket-Carburetor Mtg.	1
91	808396	Body-Upper Carburetor	1
†94	808399	Valve-Idle Adjust	1
95	805538	Screw-Valve Mtg.	1
98	808177	Screw-Throttle Adj.	1
†102	805541	Gasket-Carburetor Body	1
103	805546	Float Assembly	1
†104	805545	Pin-Float Hinge	1
†105	805547	Valve-Fuel Inlet	1
108	806134	Valve-Choke	1
†110	805549	Washer-Seal	1
†110A	806137	Washer-Seal	1
†117	806126	Jet-Main	1
	808413	Jet-Main (High Altitude)	1
119	805540	Screw-Upper Body Mtg.	1
125	808370	Carburetor Assembly	1
†127	805559	Plug-Welch	1
130	806132	Valve-Throttle	1

Ref. No.	Part No.	Description	No. Used
131	808397	Shaft-Throttle	1
141	808398	Shaft-Choke	1
†142	806128	Nozzle-Carburetor	1
187	296004	Line-Fuel (Cut to Required Length)	1
307	805025	Screw-Hex.	1
387	491922	Pump-Fuel	1
601	95162	Clamp-Hose	1
†634A	805544	Seal-Choke Shaft	1
†634B	805543	Bushing-Choke Shaft	1
†634C	806131	Seal-Throttle Shaft	1
788	807685	Bracket-Fuel Pump	1
823	805317	Screw-Mounting	1
918	393815	Line-Vacuum (Cut to Required Length)	1
947	807664	Solenoid	1
†1091	805862	Cap-Limiter	1

\*Included in Gasket Set-Part No. 808389.

†Included in Carburetor Kit-Part No. 808395.



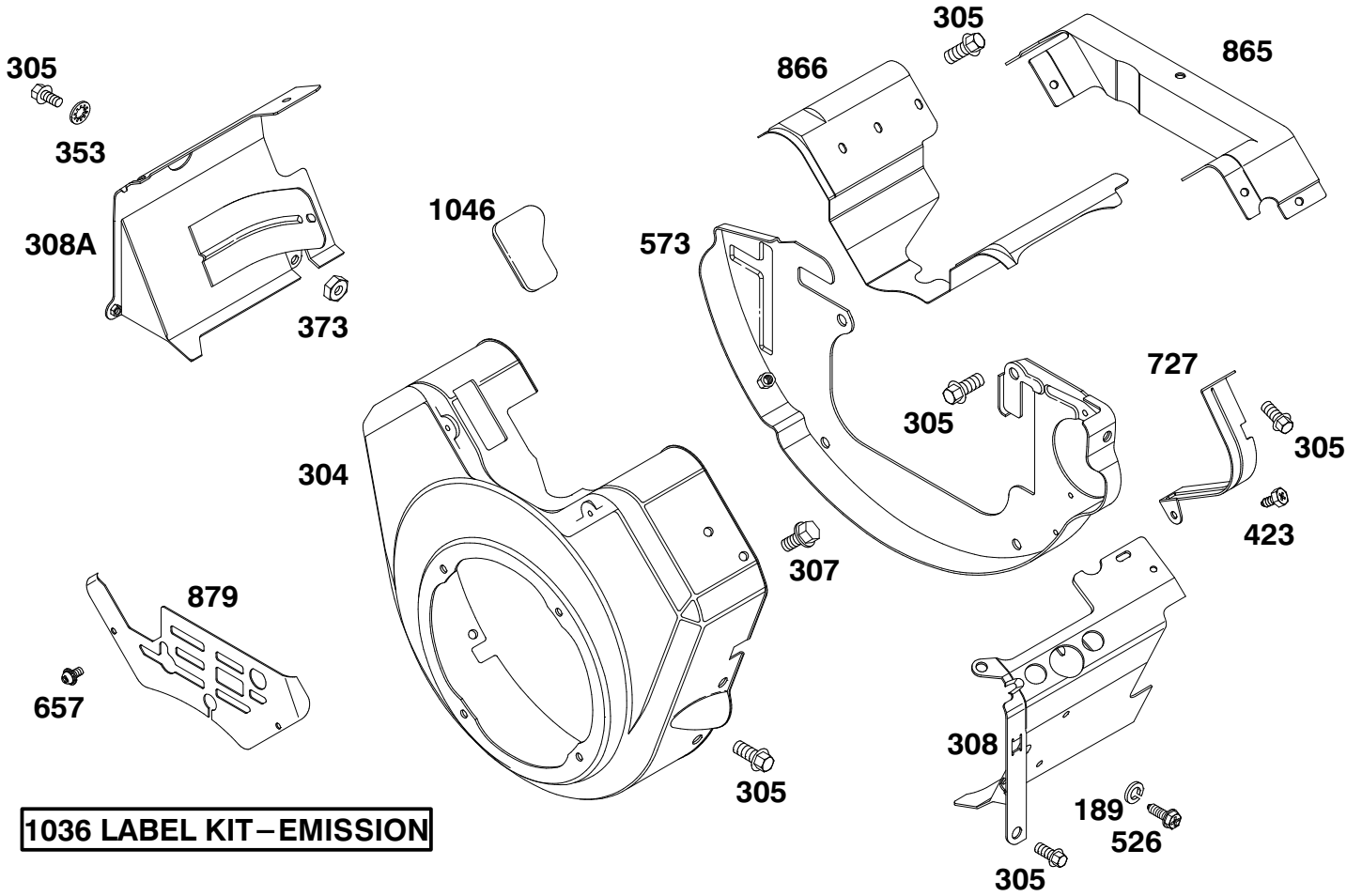
## ENGINE BRIGGS & STRATTON MODEL 350447-1116-E1

Ref. No.	Part No.	Description	No. Used
50	805772	Manifold-Intake	1
*51	805700	Gasket-Carburetor Mtg.	1
*‡52	805023	Gasket-Intake Manifold	1
53	805466	Screw-Hex.	1
54	805006	Screw-Hex.	1
122	805673	Spacer-Carburetor	1
161	807857	Base-Air Cleaner	1
305	805406	Screw-Hex. (M6 x 12 mm)	1
305A	805902	Screw-Hex. (M6 x 16 mm)	1

Ref. No.	Part No.	Description	No. Used
445	394018	Filter-Air	1
467	491875	Knob-Air Cleaner	1
535	272490	Filter-Air	1
*537	805655	Gasket-Air Cleaner	1
642	807862	Cover-Air Cleaner	1
643	805631	Plate-Air Cleaner	1
819	805317	Screw-Hex.	1
862	806144	Bracket-Air Cleaner	1
1004	805632	Duct-Air	1
1014	808311	Shield-Carburetor	1

\*Included in Gasket Set-Part No. 808389.

‡Included in Valve Overhaul Kit-Part No. 808391.

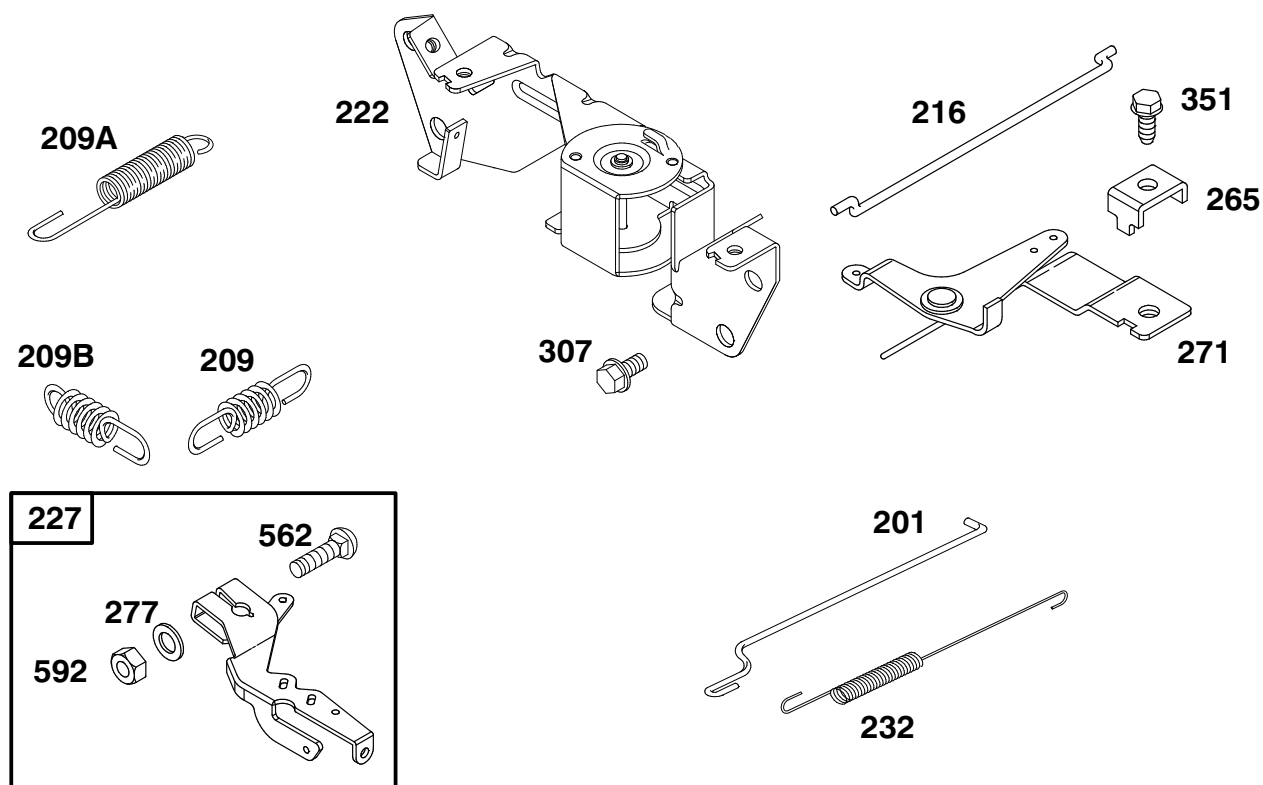


**1036 LABEL KIT-EMISSION**

**ENGINE BRIGGS & STRATTON MODEL 350447-1116-E1**

Ref. No.	Part No.	Description	No. Used
189	805449	Washer-Lock	1
304	808219	Housing-Blower	1
305	805406	Screw-Hex.	1
307	805025	Screw-Hex.	1
308	808310	Cover-Air Guide (Cyl. #1)	1
308A	808100	Cover-Air Guide (Cyl. #2)	1
353	806101	Washer-Lock	1
373	805383	Nut-Hex.	1

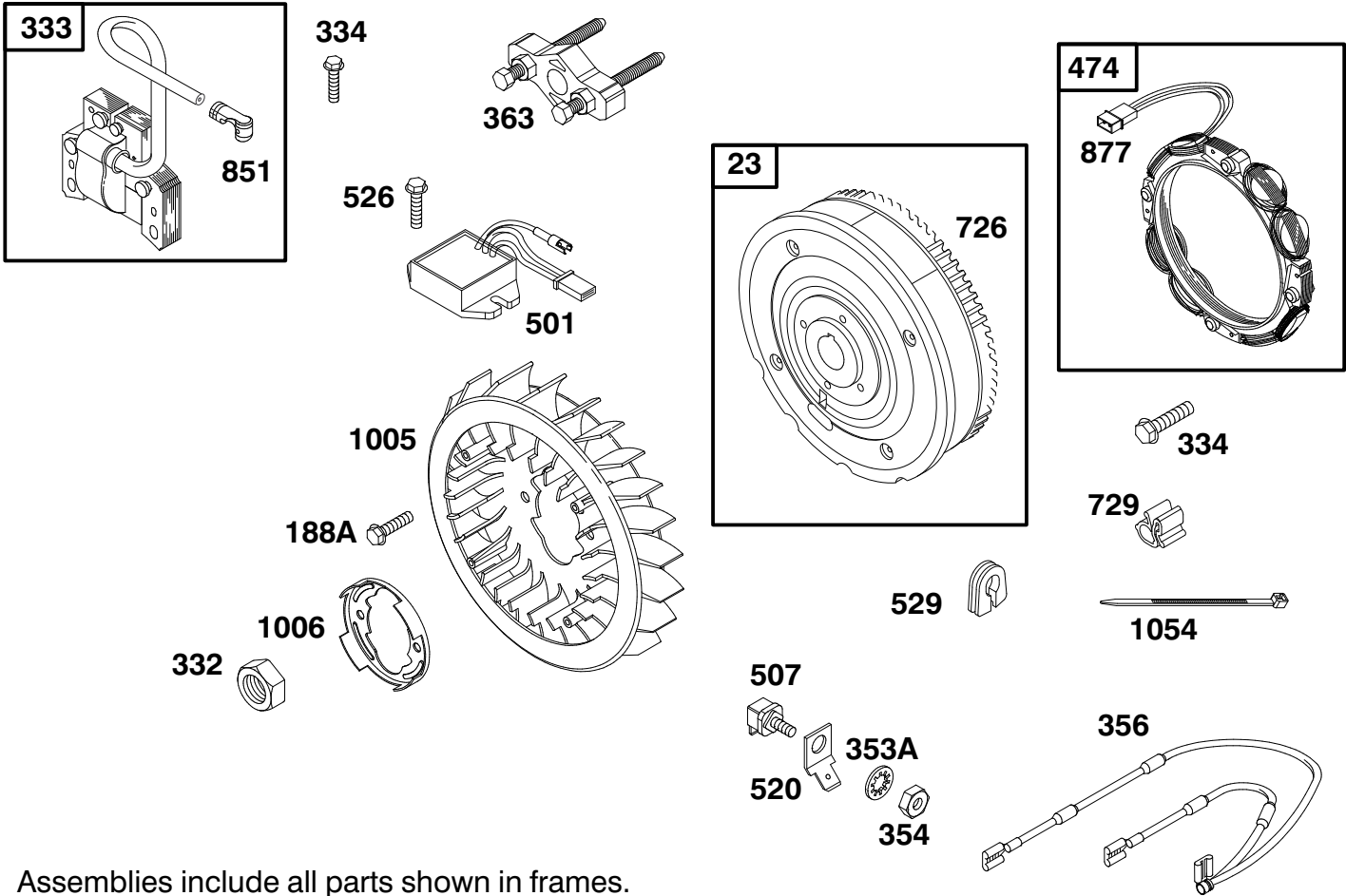
Ref. No.	Part No.	Description	No. Used
423	805260	Screw-Phillips Hex.	1
526	805448	Screw-Phillips Hex.	1
573	807663	Back Plate Assembly	1
657	805009	Screw-Phillips	1
727	805505	Shield-Starter	1
865	807661	Cover-Air Guide	1
866	805738	Valley Cover-Air Guide	1
879	805841	Cover-Carburetor	1
1036	499370	Label Kit-Emission	1
1046	805753	Plug-Blower Housing	1



Assemblies include all parts shown in frames.

## ENGINE BRIGGS & STRATTON MODEL 350447-1116-E1

Ref. No.	Part No.	Description	No. Used	Ref. No.	Part No.	Description	No. Used
201	805480	Link-Governor	1	265	221535	Clamp-Casing	1
209	805463	Spring-Governor	1	271	808145	Bracket-Choke Control	1
209A	805450	Spring-Governed Idle	1	277	805018	Washer	1
209B	805453	Spring-Governor	1	307	805025	Screw-Hex.	1
216	805439	Link-Choke	1	351	805169	Screw-Hex.	1
222	808195	Bracket-Governor Control	1	562	805381	Bolt-Carriage	1
227	807528	Lever Assembly-Governor	1	592	805383	Nut-Hex.	1
232	805465	Spring-Governor Link	1				

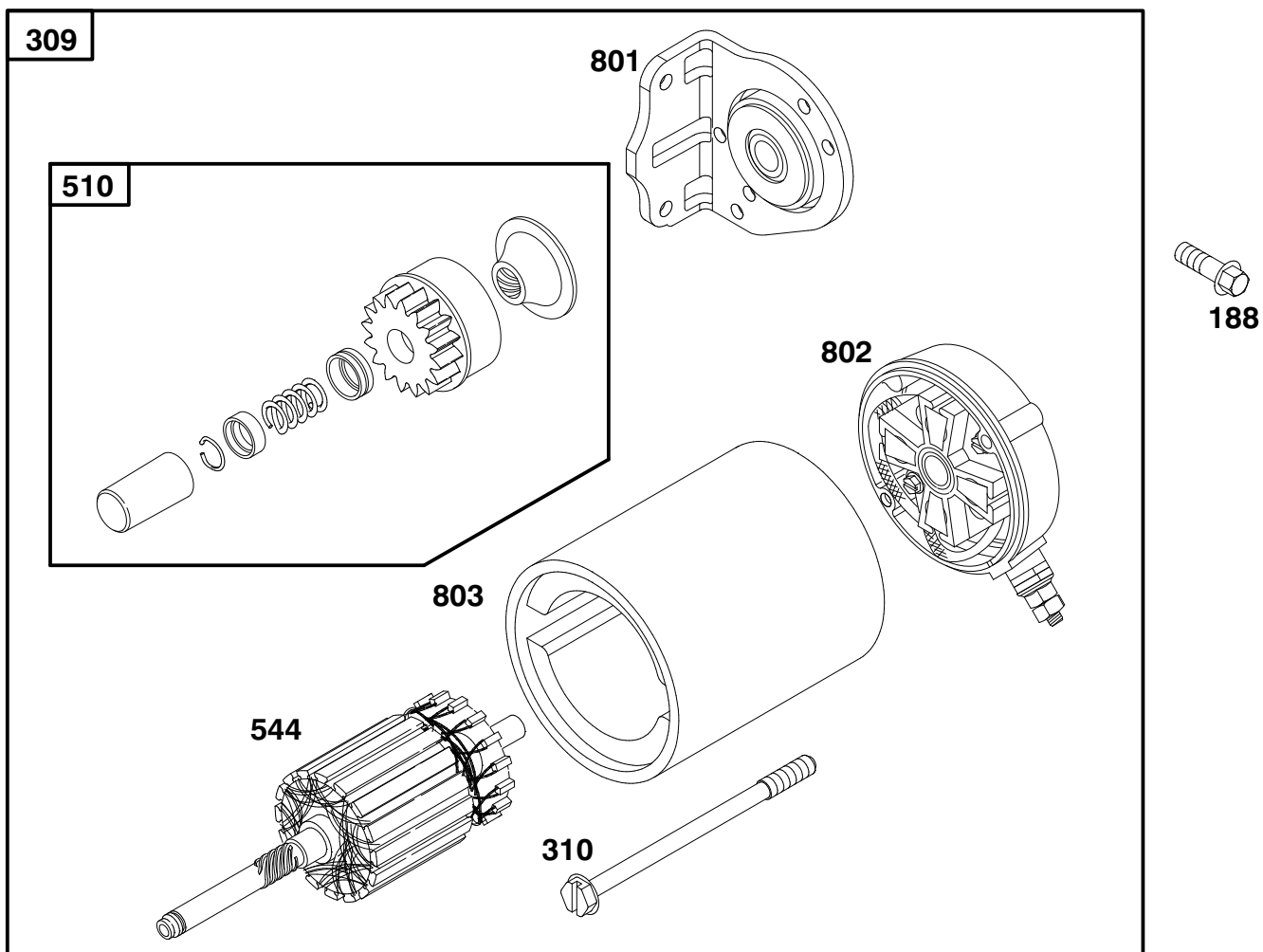


Assemblies include all parts shown in frames.

## ENGINE BRIGGS & STRATTON MODEL 350447-1116-E1

Ref. No.	Part No.	Description	No. Used
23	808128	Flywheel-Magneto	1
188A	94627	Screw-Hex.	1
332	806028	Nut-Flywheel	1
333	492341	Armature-Magneto	1
334	805407	Screw-Hex.	1
353A	92791	Washer-Lock (Internal Tooth)	1
354	90576	Nut-Hex.	1
356	493792	Wire-Stop	1
363	19203	Puller-Flywheel	1
474	393295	Stator-Alternator	1
501	394890	Regulator-Alternator	1

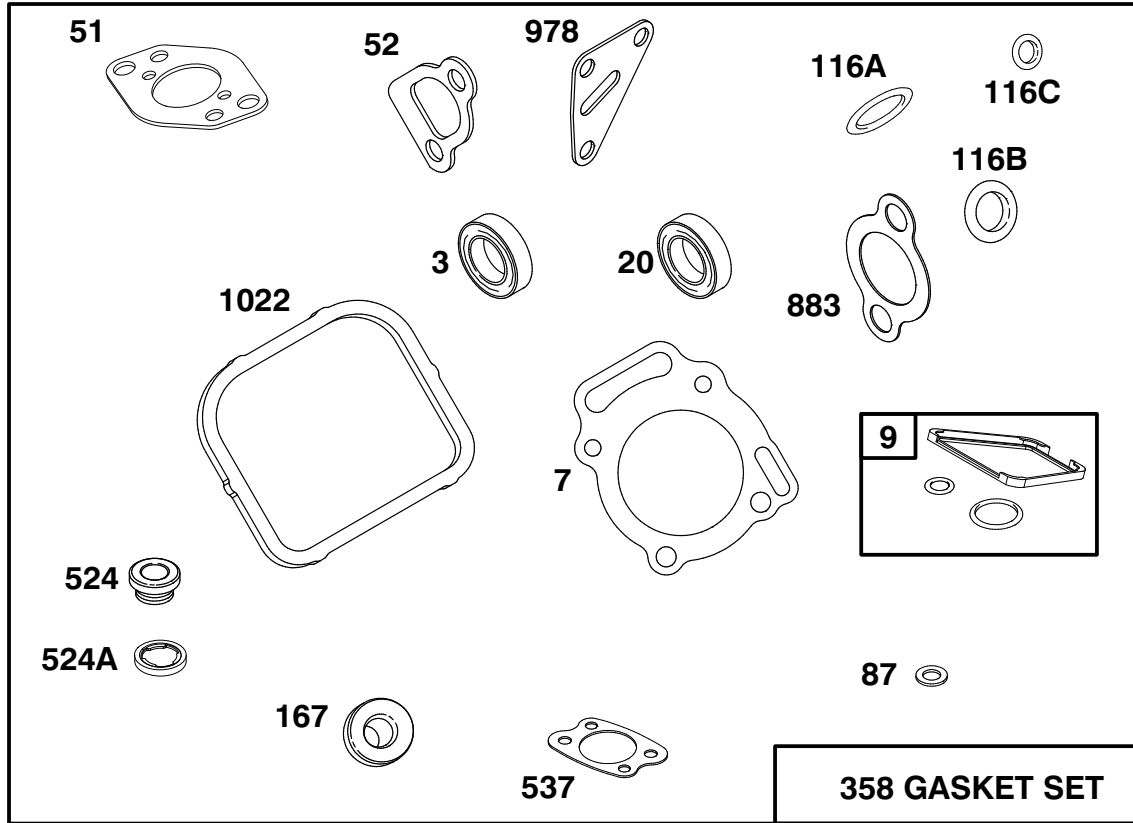
Ref. No.	Part No.	Description	No. Used
507	398525	Insulator	1
520	93722	Terminal-Spade	1
526	805448	Screw-Hex.	1
529	805641	Grommet	1
726	808162	Gear-Flywheel Ring	1
729	280470	Clip-Wire	1
851	493880	Terminal-Ignition Cable	1
877	393537	Wire-Alternator	1
1006	224413	Retainer-Fan	1
1005	808082	Fan-Flywheel	1
1054	280275	Tie-Cable	1



## ENGINE BRIGGS & STRATTON MODEL 350447-1116-E1

Ref. No.	Part No.	Description	No. Used
188	805247	Screw-Hex.	1
309	808106	Motor-Starter	1
310	496880	Bolt-Thru	1
510	496881	Drive-Starter	1
544	496816	Armature-Starter	1

Ref. No.	Part No.	Description	No. Used
801	496814	Cap-Drive	1
802	496813	Cap-End <b>Note:</b> Includes 496887	1
803	496815	Housing-Starter	1



Assemblies include all parts shown in frames.

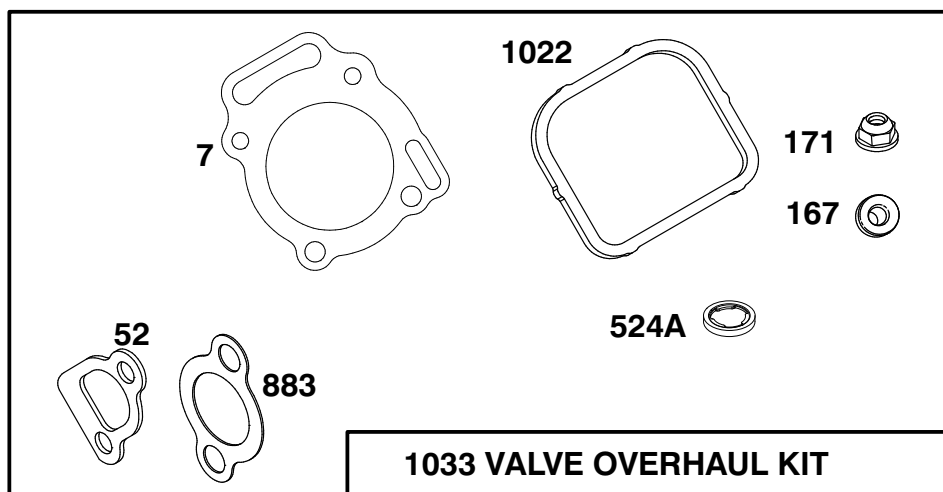
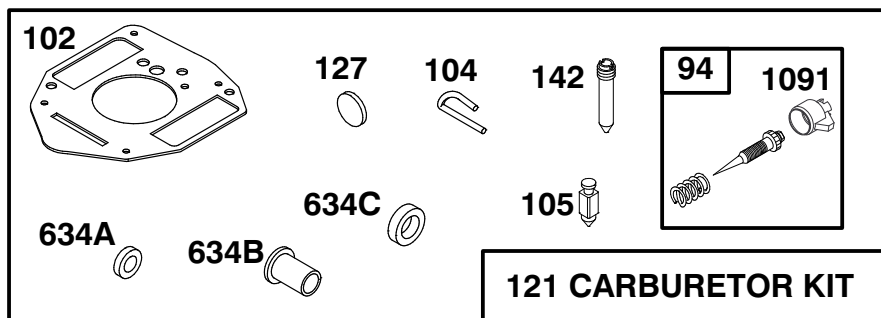
## ENGINE BRIGGS & STRATTON MODEL 350447-1116-E1

Ref. No.	Part No.	Description	No. Used
*3	805101	Seal-Oil	1
*‡7	806086	Gasket-Cylinder Head	1
*9	807688	Gasket-Breather	1
*20	805049	Seal-Oil	1
*51	805700	Gasket-Carburetor Mtg.	1
*‡52	805023	Gasket-Intake Manifold	1
*87	805054	Seal-Governor Shaft	1
*116A	805386	O-Ring (Dipstick)	1
*116B	805058	O-Ring (Oil Pump)	1

Ref. No.	Part No.	Description	No. Used
*116C	805316	O-Ring (Pick-Up Tube)	1
*‡167	805420	Washer-Valve Cover	1
358	808389	Gasket Set	1
*524	281370	Seal-Fill Tube	1
*‡524A	271983	Seal-Filler Plug	1
*537	805655	Gasket-Air Cleaner	1
*‡883	805024	Gasket-Exhaust	1
*978	805250	Gasket-Oil Filter Adapter	1
*‡1022	806039	Gasket-Valve Cover	1

\*Included in Gasket Set-Part No. 808389.

‡Included in Valve Overhaul Kit-Part No 808391.



Assemblies include all parts shown in frames.

## ENGINE BRIGGS & STRATTON MODEL 350447-1116-E1

Ref. No.	Part No.	Description	No. Used
*‡7	806086	Gasket-Cylinder Head	1
*‡52	805023	Gasket-Intake Manifold	1
†94	808257	Valve-Idle Adjust	1
†102	805541	Gasket-Carburetor Body	1
†104	805545	Pin-Float Hinge	1
†105	805547	Valve-Fuel Inlet	1
121	808395	Carburetor Kit	1
†127	805559	Plug-Welch	1
†142	805553	Nozzle-Carburetor	1
*‡167	805420	Washer-Valve Cover	1

Ref. No.	Part No.	Description	No. Used
‡171	805019	Nut-Nylock	1
*‡524A	271983	Seal-Filler Plug	1
†634A	805544	Seal-Choke Shaft	1
†634B	805543	Bushing-Choke Shaft	1
†634C	806131	Seal-Throttle Shaft	1
*‡883	805024	Gasket-Exhaust	1
*‡1022	806039	Gasket-Valve Cover	1
1033	808391	Overhaul Kit-Valve	1
†1091	805862	Cap-Limiter	1

\*Included in Gasket Set-Part No. 808389.

†Included in Carburetor Kit-Part No. 808395.

‡Included in Valve Overhaul Kit-Part No. 808391.

# TORO PART NUMBER INDEX

3321-557

Part No.	Description	Pg. No.	Ref. No.	Qty.	Part No.	Description	Pg. No.	Ref. No.	Qty.
93847	Screw-HH	11	43	2	47-2964	Hose-Fuel	11	19	1
116973	Tire-Turf (Optional)	21	*	2	47-2964	Hose-Fuel	10	31	1
116973	Tire-Turf (Optional)	4	*	2	49-2040	Screw-HFH	13	6	3
262949	Shaft-Stub	11	27	1	49-8510	Kit-Relief, Charge	16	*	1
272490	Element-Air Cleaner	11	51	1	49-8520	Kit-Implement Relief	16	*	1
281051	Knob-Air Cleaner	11	1	3	51-0780	Slider-Seat 4	7	16	1
491875	Knob-Air Cleaner	11	4	1	51-0790	Slider-Seat	7	19	1
805024	Gasket-Exhaust	11	16	2	53-6380	Washer	24	12	1
805317	Screw-HFH	11	6	5	56-7720	Rod-Battery Hold-Down	10	16	2
805447	Screw-HH	11	44	4	56-7976	Clamp-Tube	4	14	2
805631	Plate-Element	11	52	1	56-7981	Sleeve-Protective	24	10	1
805700	Gasket-Carburetor	11	40	1	57-5420	Screw-Shoulder	17	41	1
808034	Asm-Screen/Spacer	11	45	1	63-8360	Key-Ignition	3	2	2
808311	Shield-Carburetor Inlet	11	49	1	63-8410	Washer-Flat	17	20	3
3-6498	Washer-Thrust	13	5	1	63-8410	Washer-Flat	7	20	4
10-6830	Stud-Drive	4	3	4	63-8410	Washer-Flat	10	23	4
10-6850	Drum-Brake	21	34	2	65-8770	Bushing-Flange	6	22	2
18-6320	Washer-Steering	4	19	3	66-0120	Knob	3	15	2
18-6380	Bolt-Adjustment	6	17	2	67-8050	Bearing-Needle	15	37	1
18-6380	Pin-Adjusting	13	9	1	67-8060	Seal-Lip	15	36	1
22-8330	Plug	19	1	2	67-9410	Washer-Flat	8	14	2
22-8340	Spring	19	3	2	68-8990	Asm-Hydraulic Filter Head	17	15	1
22-8350	Ball	19	4	2	69-8930	Washer	18	18	4
22-8360	Pin-Cam	19	6	2	69-8960	Spacer	18	17	2
22-8370	Seat-Check Valve	19	5	2	69-9760	Plate-Cover	4	15	1
22-8380	Retainer-Spring	19	10	1	70-2770	Head	25	10	1
22-8390	Spring Retainer	19	12	1	70-2780	Piston	25	5	1
22-8400	Spacer-Float	19	13	1	70-9840	Shoe-Brake	21	32	4
22-8410	Spring	19	11	1	70-9860	Shaft-Cam	21	30	2
22-8420	Spool	19	8	1	70-9870	Plate-Brake Backing	21	33	2
22-8480	Spring-Ring Spool	19	14	1	70-9880	Spring-Extension	21	31	4
22-8490	Ring-Retaining	19	15	1	71-1500	Asm-Brake	21	*	2
22-8500	O-Ring	19	9	2	72-4790	Hold-Down-Battery	10	12	1
23-9740	Element-Hydraulic Filter	17	18	1	74-0720	Tube-Manual	7	4	1
25-2380	Plate-Thrust	16	50	1	74-9100	Pad-Forward	12	16	1
25-2400	Gasket-Cap, End	15	14	1	74-9110	Pad-Reverse	12	4	1
25-2430	Pin	15	13	1	75-0540	Teather	17	2	1
25-2450	Swashplate	16	48	1	75-4705	Hose-Fuel	11	47	1
25-2460	Plug	15	29	2	75-5470	Spacer	13	18	1
25-2470	Kit-Shim	15	30	2	75-6820	Hourmeter	3	18	1
25-2480	Spring	15	42	1	76-0810	Asm-Housing	22	*	1
25-2490	Ball	15	4	2	76-0810	Asm-Housing	23	*	1
25-2500	Shaft-Trunnion	15	43	1	76-0810	Asm-Housing	5	*	1
25-2510	Washer	15	26	2	76-0840	Manifold	22	22	1
25-2570	Spring	15	31	1	76-0850	Bearing-Thrust	22	12	1
25-2600	Kit-Cylinder Block	15	16	1	76-0850	Bearing-Thrust	23	12	1
25-2640	Spring	15	3	2	76-0850	Bearing-Thrust	5	12	1
25-2650	Plug	15	1	2	76-0860	Shaft-Coupling	22	11	1
25-2690	Housing-Pump, Charge	15	35	1	76-0860	Shaft-Coupling	23	11	1
25-3180	Kit-Valve, Check	16	*	1	76-0860	Shaft-Coupling	5	11	1
25-3210	Seal-Lip	15	25	2	76-0870	Plate-Wear	22	18	1
26-3790	Nut-Lock	4	5	1	76-0870	Plate-Wear	23	18	1
26-3790	Nut-Lock	21	19	2	76-0870	Plate-Wear	5	18	1
27-2320	Bearing-Side Flange	8	7	2	76-0880	Asm-Commutator	22	*	1
27-6600	Spacer-Coupler	14	13	8	76-0880	Asm-Commutator	23	*	1
28-4210	Solenoid-Starter	1	25	1	76-0880	Asm-Commutator	5	*	1
29-6163	Switch-Neutral	13	20	1	76-0890	Asm-Cover End	23	29	1
38-3400	Guard-Rubber	11	18	1	76-0940	Asm-Cover, End	22	24	1
38-3400	Snubber	4	42	2	76-0940	Asm-Cover, End	5	24	1
43-1710	Asm-Valve	18	11	1	76-1420	Wheel-Steering	6	1	1
43-5220	Ring-Retaining	25	12	1	76-8640	Stud-Traction	13	14	1
43-5230	Shaft with Clevis	25	13	1	80-2110	Cable-Solenoid-Starter	9	2	1
43-5260	Barrel w/Clevis & Ports	25	2	1	80-8650	Coupler-Rubber	14	14	2
46-7510	Hood-Air Inlet	3	10	1	83-0020	Starter Switch	3	1	1
46-8400	Bearing-Roller	16	51	1	83-1031	Mount-Engine	11	31	4

\*Not Illustrated

# TORO PART NUMBER INDEX (Cont.)

3321-557

Part No.	Description	Pg. No.	Ref. No.	Qty.	Part No.	Description	Pg. No.	Ref. No.	Qty.
83-1390	Fitting-Fuel Shut-Off	10	18	1	88-8110	Asm-Screen, R.H.	17	33	1
83-2220	Deflector-Exhaust	11	13	1	88-8120	Asm-Screen, L.H.	17	31	1
83-2230	Screw	11	12	4	88-8160	Plate-Valve	15	15	1
83-2240	Arrester-Spark	11	*	1	88-8170	Asm-Housing, Variable	15	45	1
83-2420	Cable-Positive	9	3	1	88-8180	Shaft-Trunnion	15	27	1
83-2420	Cable-Positive	11	25	1	88-8190	Bearing-Journal	15	24	1
83-7000	Asm-Cylinder	24	2	1	88-8210	Plug	15	33	2
83-7250	Kit-Seal Repair	25	14	1	88-8230	Seal-Lip	16	53	1
83-7260	Cone-Charge Relief	15	32	2	88-8280	Lever-Steering Adjust	6	5	1
83-9310	Arm-Brake	8	10	2	88-8290	Asm-Steering Column	6	26	1
83-9310	Lever-Brake	21	6	2	88-8330	Cable-Engine Ground	9	4	1
84-2000	Bracket-Brake	21	38	2	88-8330	Cable-Negative	11	21	1
85-0290	Spacer-Seat Support	1	4	2	88-8350	Tab-Bearing	4	31	1
85-6540	Stud-Drive	21	17	8	88-8480	Bracket-Pivot	18	6	1
85-8030	Chain	6	19	1	88-8510	Dowel	6	30	2
85-8290	Tire	21	15	2	88-8520	Block-Lock Lower	6	31	1
85-8290	Tire	4	29	1	88-8530	Block-Lock Upper	6	7	1
85-8300	Lever-Pump	13	2	1	92-1678	Battery	10	15	1
85-8360	Seal-Cover	11	3	1	92-1715	Spacer	21	37	8
85-8430	Base-Air Cleaner	11	48	1	92-2343	Asm-Pedal	12	15	1
85-8450	Rod-Control	12	9	1	92-2344	Trunnion	12	11	1
85-8460	Asm-Switch Arm	13	12	1	92-8776	Plug	15	5	2
85-8490	Panel-RH	2	41	1	92-8777	O-Ring	15	6	2
85-8570	Shroud-Lower	17	24	1	92-8959	Reservoir-Hydraulic	17	40	1
85-8600	Support-Engine	11	33	1	92-8969	Spindle	4	24	1
85-8640	Base-Engine	11	38	1	92-8976	Seat	7	21	1
85-8670	Hub-Fan	14	27	1	92-8977	Hose-Air Cleaner	3	12	1
85-8700	Hub-Pump	14	19	1	93-2190	Asm-Air Cleaner	3	9	1
85-8730	Hub-Engine	14	18	1	93-2195	Element-Air Cleaner	3	23	1
85-8770	Coupling	14	16	1	93-4365	Asm-Reservoir Cap	17	3	1
85-8780	Tread-Floor RH	2	37	1	93-6668	Decal-Battery	10	25	1
85-8790	Tread-Floor LH	2	38	1	93-6838	Hub-Wheel	4	4	1
85-8930	Retainer-Boot	10	4	1	93-6838	Hub-Wheel	21	16	2
85-8940	Asm-Flangette	4	27	1	93-6850	Lever-Brake	21	40	2
85-8950	Flangette	4	25	1	93-7170	Cap-Fuel	10	2	1
85-8960	Spacer	12	3	1	93-7252	Decal-CE	1	16	1
85-9010	Boot-Steering	10	3	1	93-7272	Decal-Caution	17	38	2
85-9020	Key-Square	14	17	1	93-7276	Decal-Danger	10	26	1
85-9030	Spring-Extension	13	10	1	93-7442	Decal-Parking Lever	3	19	1
85-9120	Spacer	6	11	3	93-9050	Decal-Instruction	2	43	1
85-9120	Spacer	13	17	1	93-9051	Decal-Eccentric Bolt	13	22	1
85-9150	Plate-Switch	13	19	1	93-9052	Decal-Danger	2	36	3
85-9160	Spacer	24	1	1	93-9053	Decal-Warning	2	48	1
85-9170	Pin-Cylinder	24	4	1	93-9081	Decal-Blank	26	5	1
85-9180	Sprocket	6	21	1	94-1414	Valve-Air Cleaner	3	24	1
85-9200	Joint-Universal	6	25	1	94-2690	Filter-Fuel	10	9	1
85-9220	Shaft-Steering Upper	6	28	1	94-3652	Asm-Cover	3	22	1
85-9450	Hose-Hydraulic	14	35	1	94-4513	Ring-Retaining	6	8	1
85-9460	Cooler-Oil	17	30	1	94-4514	Pin-Tilt Lock	6	6	1
85-9510	Screen-Filler	17	4	1	94-4519	Cover-Cable	11	22	1
85-9550	Clamp-Rubber	17	35	2	94-6116	Rim	21	27	2
85-9560	Fan	14	28	1	94-6116	Rim	4	38	1
85-9570	Hose-Hydraulic	24	14	1	94-8178	Kit-Seal	22	*	1
85-9570	Hose-Hydraulic	18	33	1	94-8178	Kit-Seal	23	*	1
85-9580	Hose-Hydraulic	24	5	1	94-8178	Kit-Seal	5	*	1
85-9580	Hose-Hydraulic	18	32	1	95-0553	Plate-Pump	13	7	1
85-9590	Hose-Hydraulic	14	25	1	95-0629	Fitting-Hydraulic 90°	14	32	1
85-9590	Hose-Hydraulic	17	28	1	95-0632	Cover	11	53	1
85-9610	Hose-Hydraulic	14	1	2	95-0645	Plate-Hot Surface	11	10	1
85-9640	Hose-Hydraulic	4	12	2	95-5806	Band-Mounting	3	8	1
85-9660	Plate-Seat Adjust	7	5	1	95-5808	Cap-End	15	7	1
85-9670	Nut-T	17	34	2	95-5809	Ball Bearing	15	20	1
85-9680	Panel-LH	2	40	1	95-5810	Shaft	16	47	1
87-2710	Asm-Lever	8	22	1	95-5812	Asm-Gerotor	15	39	1
87-4710	Spacer-Parking Brake	8	24	1	95-5813	Ring-Retaining	15	21	1

\*Not Illustrated

# TORO PART NUMBER INDEX (Cont.)

Part No.	Description	Pg. No.	Ref. No.	Qty.	Part No.	Description	Pg. No.	Ref. No.	Qty.
95-5815	Spring-Valve, Acceleration	15	8	1	98-0988	Asm-Hydraulic Tube	21	14	1
95-5816	Plug	15	11	2	98-0988	Tube-Hydraulic	18	35	1
95-5823	Bracket-Lever	8	2	1	98-0989	Hose-Hydraulic	14	21	1
95-5824	Rod-Adjustment	21	39	2	98-0989	Hose-Hydraulic	18	34	1
95-5827	Asm-Muffler Shield	11	11	1	98-0991	Control-Choke/Throttle	3	7	2
95-5842	Asm-Hydraulic Pump	14	8	1	98-0994	Harness-Wire	24	20	1
95-5844	Strap	8	19	2	98-0994	Harness-Wire	18	43	1
95-5848	Rod-Traverse	8	16	1	98-0994	Wire Harness-Main	9	1	1
95-9720	Fitting-Hydraulic Orificed	18	8	1	98-0994	Wire Harness-Main	10	33	1
97-3055	Asm-Hydraulic Motor	21	8	1	98-0995	Hose-Fuel	10	21	1
98-0900	Bracket-Bearing LH	8	11	1	98-0997	Fender-RH	26	1	1
98-0901	Bracket-Bearing RH	8	12	1	98-0998	Fender-LH	26	6	1
98-0902	Panel-Rear RH	2	42	1	98-0999	Wire-Ground	11	26	1
98-0917	Rod-Seat	1	26	1	98-0999	Wire-Ground	10	34	1
98-0918	Fender-RH	1	7	1	98-8150	Seat Base	1	30	1
98-0920	Valve-Acceleration	15	9	2	98-8151	Asm-Cooler Mount	17	25	1
98-0922	Bracket-Hourmeter	8	25	1	98-8159	Pivot-Welded	18	21	1
98-0924	Guide-Chain	6	33	1	98-8160	Latch-Valve Lever	1	8	1
98-0925	Bracket-Chain	6	34	1	99-1629	Guide-Lever	1	3	1
98-0926	Strap	4	32	1	99-1632	Lever-Lift	18	20	1
98-0927	Tank-Fuel	10	1	1	218-461	Nut-Hex.	3	21	1
98-0928	Shaft-Steering Lower	6	23	1	232-32	Valve-Stem	4	37	1
98-0929	Plate-Chain Stay	6	38	1	232-35	Valve-Stem	21	28	2
98-0930	Asm-Engine	11	46	1	233-39	Handle	6	4	1
98-0932	Asm-Hydraulic Tube	4	10	1	233-39	Knob-Lever	18	5	1
98-0932	Tube-Hydraulic	18	39	1	237-21	O-Ring	24	15	2
98-0933	Asm-Hydraulic Tube	14	3	1	237-21	O-Ring	18	29	2
98-0933	Asm-Hydraulic Tube	4	13	1	237-22	O-Ring	21	4	1
98-0934	Asm-Hydraulic Tube	21	9	1	237-22	O-Ring	14	24	2
98-0934	Tube-Hydraulic	18	41	1	237-22	O-Ring	18	26	3
98-0935	Asm-Hydraulic Tube	21	10	1	237-22	O-Ring	17	29	2
98-0935	Tube-Hydraulic	18	40	1	237-30	O-Ring	21	1	4
98-0936	Asm-Hydraulic Tube	21	23	1	237-30	O-Ring	14	2	4
98-0936	Tube-Hydraulic	18	38	1	237-30	O-Ring	15	12	2
98-0937	Asm-Hydraulic Tube	21	22	1	237-30	O-Ring	18	30	6
98-0937	Tube-Hydraulic	18	37	1	237-30	O-Ring	4	39	4
98-0938	Asm-Hydraulic Tube	14	5	1	237-42	O-Ring	19	2	2
98-0938	Tube-Hydraulic	18	36	1	237-42	O-Ring	21	3	1
98-0950	Asm-Fork	4	7	1	237-42	O-Ring	14	22	2
98-0953	Cover-Air Cleaner	11	2	1	237-42	O-Ring	18	27	2
98-0958	Asm-Hydraulic Motor	4	1	1	237-78	O-Ring	25	1	2
98-0959	Asm-Hydraulic Motor	21	12	1	237-78	O-Ring	24	16	2
98-0960	Muffler	11	14	1	237-78	O-Ring	18	28	2
98-0962	Asm-Frame	2	34	1	237-79	O-Ring	17	5	4
98-0963	Bracket-Bulkhead	18	13	1	237-79	O-Ring	14	7	3
98-0965	Asm-Top Panel	2	44	1	237-79	O-Ring	15	10	3
98-0966	Asm-Panel-Rear LH	1	29	1	237-80	O-Ring	21	2	4
98-0969	Hose-Hydraulic	17	17	1	237-80	O-Ring	14	33	1
98-0969	Hose-Hydraulic	14	30	1	237-80	O-Ring	15	34	2
98-0970	Hose-Hydraulic	17	11	1	237-80	O-Ring	4	40	2
98-0971	Fitting-Hydraulic 90°	17	10	1	237-86	O-Ring	15	2	4
98-0972	Decal-Sand Pro 5020	1	20	2	237-95	O-Ring	15	40	1
98-0973	Pin-Grooved	6	20	1	237-124	Grommet	10	27	1
98-0975	Decal-Controls	3	16	1	237-143	Grommet	10	17	2
98-0976	Hose-Fuel	10	7	1	237-146	O-Ring	17	8	3
98-0977	Decal-Service	7	8	1	237-164	Grommet-Rubber	3	13	1
98-0978	Spacer	6	15	2	238-14	Pin-Clevis	8	5	1
98-0979	Pin-Lynch	7	11	1	240-2	Grommet	26	3	1
98-0980	Strip-Seat Base	1	10	1	240-3	Grommet-Rubber	1	1	1
98-0981	Pad-Seat Base	1	12	1	240-5	Grommet	18	19	2
98-0982	Strip-Fender	1	13	1	240-11	Grommet	17	19	3
98-0983	Bracket-Fuel Tank	6	14	1	240-11	Grommet	10	22	4
98-0984	Decal-Lift	3	17	1	242-50	Nut-Lug	21	18	8
98-0987	Tube-Hydraulic	18	31	1	242-50	Nut-Lug	4	23	4
98-0987	Tube-Hydraulic	17	37	1	2410-73	Retainer-Teather	17	1	1

\*Not Illustrated

# TORO PART NUMBER INDEX (Cont.)

3321-557

Part No.	Description	Pg. No.	Ref. No.	Qty.	Part No.	Description	Pg. No.	Ref. No.	Qty.
2412-36	Clamp-Hose	17	12	1	325-5	Screw-HH	24	22	4
2412-36	Clamp-Hose	10	19	2	325-11	Screw-HH	6	35	2
2412-93	Clamp-R	10	5	1	325-13	Screw-HH	21	20	8
2412-98	Clamp-Hose	10	8	3	3210-2	Screw-HH	11	54	2
2412-98	Clamp-Hose	11	17	1	3217-5	Nut-Hex.	10	13	2
2412-109	Clip-J	10	20	1	3218-2	Nut-Jam	7	18	2
2412-129	Clamp-Hose	17	7	3	3218-5	Nut-Jam	12	10	1
2412-129	Clamp-Hose	14	31	2	3218-13	Nut-Jam	1	22	2
2412-130	Clamp-Hose	3	11	2	3219-14	Nut-Hex	1	21	2
2412-133	Clamp-R	7	1	2	3220-2	Nut-Jam	21	41	2
2412-138	Clamp-R	18	23	2	3230-20	Bolt-CARR	1	6	2
251-307	Bearing	13	16	2	3234-1	Screw-HFH	8	8	4
251-352	Asm-Bearing	4	26	1	3234-4	Screw-HFH.	1	15	2
252-82	Bearing-Needle	15	44	1	3234-7	Screw	2	39	5
254-61	Bearing-Cup	4	21	2	3234-29	Screw-HFH	2	47	2
254-70	Bearing-Cone	4	20	2	3241-5	Screw-Set, Sq. Hd.	14	11	6
256-113	Bushing-Flange	13	11	2	3253-3	Washer-Lock	17	13	2
256-185	Bushing-Sleeve	6	27	1	3253-3	Washer-Lock	18	24	1
256-219	Bushing-Flange	12	2	2	3253-4	Washer-Lock	7	2	2
2710-11	Link-Connecting	6	18	2	3253-4	Washer-Lock	6	37	2
2710-20	Link-Offset	18	12	1	3253-7	Washer-Lock	21	21	8
282-2	Clevis-Adjustment	21	42	2	3254-1	Washer-Lock	1	24	2
283-1	Pin-Clevis	21	43	2	3254-2	Washer-ITLW	11	24	1
283-62	Pin-Clevis	8	18	1	3254-2	Washer-Lock	1	23	2
285-17	Plug	3	25	1	3254-2	Washer-Lock	10	35	1
285-17	Plug-Pipe	15	23	2	3254-5	Washer-Lock	3	20	1
302-5	Fitting-Grease	4	36	1	3255-7	Washer-ETLW	11	8	3
302-33	Fitting-Grease	6	32	1	3256-1	Washer-Flat	7	7	4
302-33	Fitting-Grease	4	34	1	3256-2	Washer-Flat	1	17	1
302-60	Fitting-Grease	13	13	1	3256-22	Washer-Flat	10	11	2
321-3	Screw-HH	10	14	2	3256-23	Washer-Flat	12	5	1
321-3	Screw-HH	1	28	2	3256-23	Washer-Flat	3	5	2
321-4	Screw-HH	17	14	6	3256-23	Washer-Flat	6	9	3
321-4	Screw-HH	21	35	8	3256-23	Washer-Flat	8	21	2
321-9	Screw-HH	8	23	1	3256-23	Washer-Flat	7	32	1
321-10	Screw-HH	4	16	1	3256-24	Washer-Flat	1	11	4
321-23	Screw-HH	18	7	4	3256-24	Washer-Flat	12	13	2
322-2	Screw-HH	7	3	6	3256-24	Washer-Flat	11	30	8
322-2	Screw-HH	17	22	2	3256-26	Washer-Flat	12	8	1
322-2	Screw-HH	2	49	1	3256-26	Washer-Flat	24	21	4
322-3	Screw-HH	26	2	4	3257-32	Key-Woodruff	14	9	2
322-3	Screw-HH	6	13	4	3257-32	Key-Woodruff	15	19	2
322-3	Screw-HH	17	42	2	3257-42	Key-Woodruff	21	5	1
322-4	Screw-HH	14	15	8	3257-42	Key-Woodruff	22	17	1
322-4	Screw-HH	11	29	8	3257-42	Key-Woodruff	23	17	1
322-4	Screw-HH	15	38	4	3257-42	Key-Woodruff	5	17	1
322-5	Screw-HH	6	10	3	3258-166	Screw-Round Hd.	7	6	4
322-5	Screw-HH	3	14	2	3269-32	Rivet-Pop	11	9	2
322-8	Screw-HH	13	15	1	3272-4	Pin-Cotter	1	18	2
322-8	Screw-HH	11	55	2	3272-6	Pin-Cotter	21	44	2
322-10	Screw-HH	11	36	2	3272-10	Pin-Cotter	8	17	2
322-11	Screw-HH	8	20	2	3272-10	Pin-Cotter	21	45	2
322-14	Screw-HH	12	1	1	3272-12	Pin-Cotter	8	15	2
322-43	Screw-HH	6	3	1	3272-16	Pin-Cotter	12	7	1
323-5	Screw-HH	17	21	3	3272-37	Pin-Cotter	4	17	1
323-5	Screw-HH	10	24	4	3274-5	Screw-HSH	14	20	2
323-5	Screw-HH	11	34	4	3274-12	Screw-HSH	7	33	4
323-9	Screw-HH	1	5	2	3274-31	Screw-HH	10	30	1
323-10	Screw-HH	13	1	1	3274-56	Screw-HSH	2	50	1
323-10	Screw-HH	11	35	2	3274-86	Screw-HSH	17	27	2
323-11	Screw-HH	24	3	1	3274-93	Screw-HSH	4	6	2
323-11	Screw-HH	11	37	2	3289-24	Screw-HSFH	6	29	1
323-29	Screw-HH	4	28	3	3290-199	Speed Nut	2	52	1
323-34	Screw-HH	24	11	1	3290-256	Pin-Hair	24	18	2
323-45	Screw-HH	16	55	4	3290-360	Screw-HH	18	3	2

\*Not Illustrated

# TORO PART NUMBER INDEX (Cont.)

Part No.	Description	Pg. No.	Ref. No.	Qty.	Part No.	Description	Pg. No.	Ref. No.	Qty.
3290-378	Tie-Cable	11	23	2	32105-21	Screw-Machine	13	3	2
3290-378	Tie-Cable	10	29	1	32115-15	Retainer	2	51	1
3290-378	Tie-Cable	18	42	1	32120-11	Ring-Retaining	15	46	1
3290-379	Tie-Wire	24	19	1	32120-47	Retainer	21	29	2
3290-477	Washer-Curved	8	1	1	32121-6	Pin-Roll	8	9	2
3290-477	Washer-Curved	18	25	1	32121-15	Pin-Roll	6	24	2
3290-496	Nut-Panel	2	46	4	32121-73	Pin-Spring	18	22	1
3290-509	Tie-Mount	10	28	1	32121-91	Pin-Spring	16	49	4
3296-2	Nut-Lock	18	4	2	32121-111	Pin-Roll	6	2	1
3296-2	Nut-Lock	3	6	4	32128-20	Nut-Flange Lock	1	14	1
3296-4	Nut-Lock	13	8	1	32136-9	Nut-Hex.	4	18	1
3296-4	Nut-Lock	6	16	2	32141-36	Level-Screw	7	17	2
3296-8	Nut-Lock	18	1	3	32144-11	Screw-HWHTF	1	2	8
3296-8	Nut-Lock	4	8	1	32144-11	Screw-HWHTF	18	14	4
3296-9	Nut-Lock	13	21	2	32144-11	Screw-HWHTF	17	26	3
3296-23	Nut-Lock	4	2	2	32144-11	Screw-TAP	10	6	3
3296-23	Nut-Lock	14	10	2	32144-14	Screw-HWH	8	13	4
3296-23	Nut-Lock	12	12	1	32144-18	Screw-HH	3	26	2
3296-25	Nut-Lock	6	36	2	32144-73	Screw-HH	14	29	4
3296-29	Nut-Lock	26	4	4	32148-6	Nut-Clinch	17	32	4
3296-29	Nut-Hex.	14	12	8	32148-8	Nut-Clinch	1	33	2
3296-29	Nut-Lock	13	4	2	32148-11	Nut-Clinch	2	35	2
3296-29	Nut-Lock	3	4	2	32151-46	Ring-Retaining	15	28	2
3296-29	Nut-Lock	8	4	2	32152-10	Nut	25	3	1
3296-29	Nut-Lock	12	6	1	3334-945	Tie-Cable	24	9	1
3296-29	Nut-Lock	1	9	3	33113-008	Screw-HH	11	7	3
3296-29	Nut-Lock	6	12	6	340-2	Fitting-Hydraulic Straight	21	13	1
3296-29	Nut-Lock	7	12	10	340-6	Fitting-Hydraulic Straight	21	11	4
3296-29	Nut-Lock	11	20	4	340-18	Fitting-Hydraulic 90°	17	36	2
3296-29	Nut-Lock	17	23	4	340-77	Fitting-Hydraulic 90°	18	2	1
3296-29	Nut-Lock	11	32	8	340-77	Fitting-Hydraulic 90°	14	23	2
3296-39	Nut-Lock	8	6	4	340-86	Fitting-Hydraulic Tee	18	10	1
3296-39	Nut-Lock	12	14	1	340-89	Fitting-Hydraulic 45°	4	30	2
3296-39	Nut-Lock	24	17	1	340-92	Fitting-Hydraulic Straight	18	9	1
3296-39	Nut-Lock	1	19	2	340-98	Fitting-Hydraulic 90°	14	6	2
3296-39	Nut-Lock	4	22	3	340-121	Fitting-Hydraulic Tee	18	15	2
3296-39	Nut-Lock	13	23	1	340-127	Nut-Bulkhead	18	16	2
3296-39	Nut-Lock	11	28	4	340-142	Fitting-Hydraulic 90°	24	13	2
3296-42	Nut-Lock	8	3	1	353-550	Plug-Hydraulic	17	39	1
3296-42	Nut-Lock	7	25	4	353-987	Fitting-Hydraulic 90°	17	9	1
3296-42	Nut-Lock	1	27	2	353-988	Plug	15	22	1
3296-42	Nut-Lock	21	36	8	353-990	Plug	23	24	2
32103-12	Nut-Wing	10	10	2	354-73	Fitting-Hydraulic Straight	17	16	1
32104-6	Screw-HH	4	33	2	354-120	Fitting-Hydraulic 90°	17	6	1
32105-13	Screw-HH	3	3	4	354-126	Fitting-Hydraulic 45°	14	34	1

\*Not Illustrated

## PRODUCT CHANGES

In an effort to make improvements available to TORO owners as quickly as possible, minor changes are incorporated into Toro's products from time to time that do not become immediately shown in the Parts Catalog. If such a change has been made in your unit, which is not reflected in your manual, see your TORO Distributor or his Authorized TORO Service Dealer for information and part numbers.

## IDENTIFICATION AND ORDERING

### MODEL AND SERIAL NUMBERS

The Sand Pro 5020 has two identification numbers; a model number and a serial number. The two numbers are stamped on a plate which is located on the main frame. In any correspondence concerning the Sand Pro 5020, supply model and serial numbers to assure that correct information and replacement parts are obtained.

To order replacement parts from an Authorized TORO Service Dealer, supply the following information:

1. Model and serial number of the Sand Pro 5020.
2. Part number, description, and the quantity of part(s) desired.

**NOTE:** Do not order by reference number if a parts catalog is being used; use the PART NUMBER.

# TABLE OF CONTENTS

Description	Page	Description	Page
Frame & Body Asm .....	1–2	Hydraulic Plumbing Asm .....	18
Air Cleaner & Control Panel Asm .....	3	Control Valve Asm No. 43–1710 .....	19
Front Wheel Asm .....	4	Hydraulic Schematic .....	20
Front Hydraulic Drive Motor No. 98–0958 .....	5	Rear Wheel Asm .....	21
Steering Asm .....	6	Left Rear Hydraulic Motor Asm	
Seat Asm .....	7	No. 97–3055 .....	22
Parking Brake Asm .....	8	Right Rear Hydraulic Motor Asm	
Electrical Schematic .....	9	No. 98–0959 .....	23
Fuel Tank & Battery Asm .....	10	Lift Asm .....	24
Engine & Muffler Asm .....	11	Hydraulic Lift Cylinder Asm No. 83–7000 .....	25
Traction Pedal Asm .....	12	Fender Asm–Europe .....	26
Pump Control Lever Asm .....	13	Engine Briggs & Stratton	
Hydraulic Pump Installation Asm .....	14	Model 350447–1116–E1 .....	27–37
Hydraulic Pump Asm No. 95–5842 .....	15–16	TORO Part Number Index .....	38–42
Hydraulic Reservoir Asm .....	17		

