



ROLLER KIT
for OFZ 48" MOWER

PART NO. 99-0268

**INSTALLATION
INSTRUCTIONS**

Loose Parts

Note: Use the chart below to identify parts used for assembly.

DESCRIPTION	QTY.	USE
Roller bracket	2	Install rear rollers
Bolt 3/8-16 x 3/4" (19 mm)	8	
Locknut 3/8-16	8	
Roller	2	
Bolt 1/2-13 x 4" (101 mm)	2	
Nut 1/2-13	2	
Parts Catalog	1	Save for ordering parts

Mower Preparation

For ease of performing these modifications remove mower from traction unit; refer to Mower Operator's Manual for instructions.

PROTOTYPE

Install Rollers

1. Remove locknut, bolt and roller from mounting bracket.
2. Clamp roller bracket against rear of mower, next to side of discharge opening and flush with the bottom of the mower (Fig. 1).
3. Using bracket as a guide, center punch, pilot drill, then drill (4) 13/32" (10.5 mm) holes in the mower (Fig. 1).
4. Insert (4) 3/8-16 x 1" (26 mm) bolts through from inside mower and secure with (4) 3/8-16 locknuts (Fig. 1).
5. Repeat on opposite side for other roller bracket.
6. Select the proper hole position for roller, depending on height-of-cut to be used; refer to Adjusting Rollers.

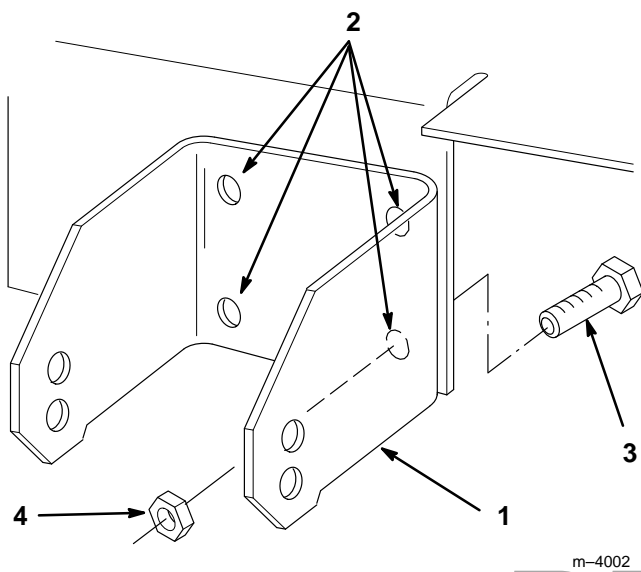


Figure 1

- | | |
|---|-----------------------------|
| 1. Roller bracket | 3. Bolt 3/8-16 x 1" (26 mm) |
| 2. Center punch, pilot drill, then drill (4) 13/32" (10.5 mm) holes | 4. Locknut 3/8-16 |

Adjusting Rollers

The rollers must be changed for heights-of-cut. Above 2" (51 mm) the rollers must be adjusted to the lower hole location. If the height-of-cut is set to the 1" or 1-1/2" (25 or 39 mm) the rollers must be adjusted to the upper hole location.

1. After adjusting height-of-cut, tilt mower to adjust front roller, refer to; Tilting Mower.
2. Remove the locknut and bolt to change hole location (Fig. 2).
3. Select the proper hole position for the height-of-cut to be used (Fig. 2).
4. Insert 1/2-13 x 4" (101 mm) bolt through roller and secure with 1/2-13 locknut (Fig. 2).
5. Lower mower, refer to; Tilting Mower, then repeat adjustment on rear rollers.

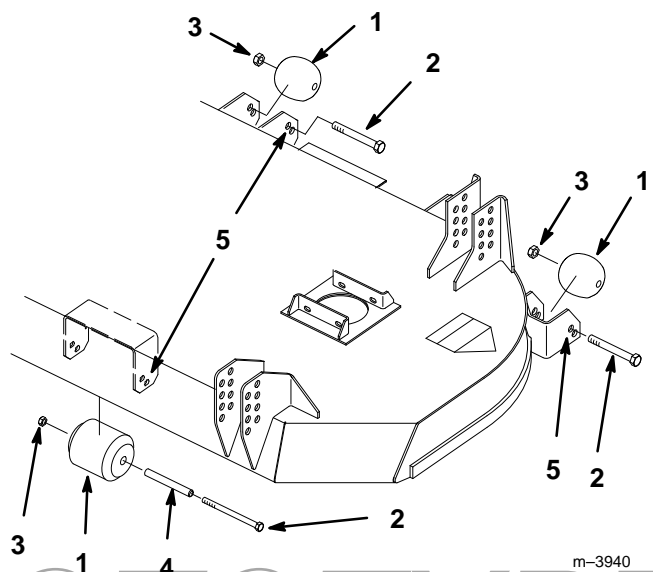


Figure 2

- | | |
|------------------------------|-----------|
| 1. Roller | 4. Spacer |
| 2. Bolt 1/2-13 x 4" (101 mm) | 5. Holes |
| 3. Locknut 1/2-13 | |