

FUEL SHUT-OFF VALVE KIT for GARDEN TRACTORS ONLY

PART NO. 99-3716 and 99-3717

INSTALLATION INSTRUCTIONS

Note: Use the following instructions only when installing these valves on Garden Tractors.

Install Fuel Shut-Off Valve

1. Drain fuel from tank into an approved container. Refer to: tractor Operator's Manual.
2. Loosen, but do not remove, screw clamp on tank nipple (Fig. 2). Unscrew existing fuel valve and discard (Fig. 1).
3. Clean and dry threads on new valve and in fuel tank (Fig. 1).
4. Apply thread sealant to new fuel valve threads. Use Permatex Aviation Form-A-Gasket #3H or equivalent.

Note: Apply thread sealant sparingly and only to threads.

5. Install new fuel valve and locate as shown, 20° left from center of tractor (Fig. 1).

6. Tighten screw clamp around tank nipple (Fig. 2).
7. Push fuel hose onto barbed end of fuel valve and secure with hose clamp (Fig. 2).

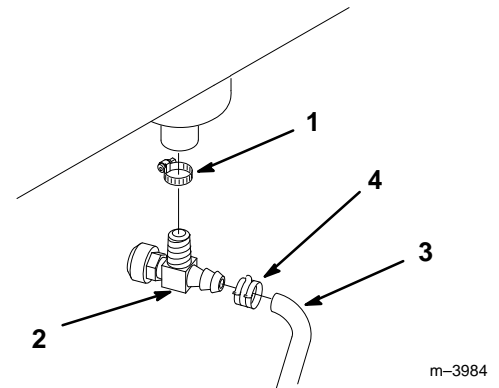
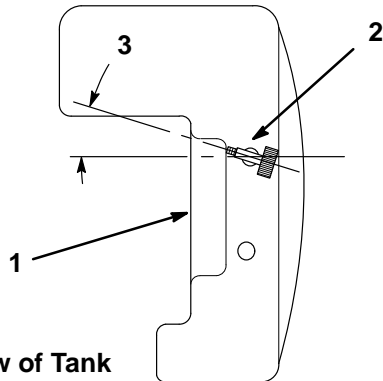


Figure 2

- | | |
|----------------|---------------|
| 1. Screw clamp | 3. Fuel hose |
| 2. Fuel valve | 4. Hose clamp |



Bottom View of Tank

Figure 1

- | | |
|---------------|--------------------|
| 1. Fuel tank | 3. 20° from center |
| 2. Fuel valve | |