



REMOTE OIL FILTER KIT for OFZ TRACTION UNITS

PART NO. 99-0267

INSTALLATION INSTRUCTIONS

Loose Parts

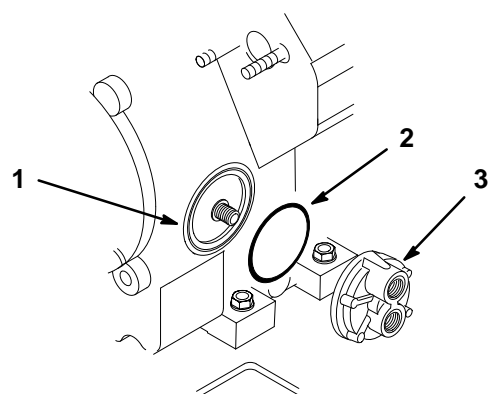
Note: Use the chart below to identify parts used for assembly.

DESCRIPTION	QTY.	USE
Filter adapter	1	Install filter adapter and hoses
O-ring	1	
1/2" NPTF fitting	2	
Oil hose	2	
Remote filter Plate	1	Install remote oil filter
Bolt 5/16-18 x 1" (26 mm)	4	
Locknut 5/16-18	4	
1/4" NPTF nipple	2	
Remote filter adapter	1	
Oil filter	1	
Cable tie	1	
Parts Catalog	1	Save for ordering parts

Note: Coat all threads with pipe joint sealant before assembly. Do not use teflon tape.

Install Filter Adapter

1. Drain engine oil and remove existing oil filter from engine. Refer to: traction unit Operator's Manual.
2. Clean engine oil filter mounting surface (Fig. 1).
3. Install O-ring into groove of filter adapter and thread filter adapter onto engine oil filter mounting until snug, then turn and additional 1/4 turn and orient as shown (Fig. 1).



m-3972

Figure 1

- | | |
|------------------------|-------------------|
| 1. Oil filter mounting | 3. Filter adapter |
| 2. O-ring | |

Install Oil Hoses

1. Thread 1/2" NPTF fittings into filter adapter.
2. Torque fittings to 90–130 in. lbs. (10–15 N•m) ending between 12 and 3 o'clock as shown (Fig. 2).
3. Thread fixed hose ends into 1/2" NPTF fitting (Fig. 2).

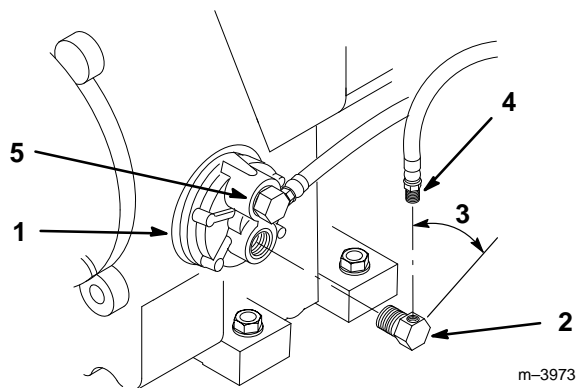


Figure 2

- | | |
|-------------------------|------------------------|
| 1. Filter adapter | 4. Oil hose, fixed end |
| 2. 1/2" NPTF fitting | 5. OUT port |
| 3. Between 12-3 o'clock | |

Install Remote Filter Adapter

1. Measure back 6-1/2" (165 mm) from left frame upright to front of plate. Center filter plate holes on flange width and clamp plate in position (Fig. 3).
2. Using filter plate as a guide, drill (2) 11/32" (9 mm) mounting holes through bottom flange of left side engine frame (Fig. 3).
3. Secure filter plate to bottom flange of engine frame with (2) 5/16-18 x 1" (26 mm) bolts and (2) 5/16-18 flange locknuts (Fig. 3).

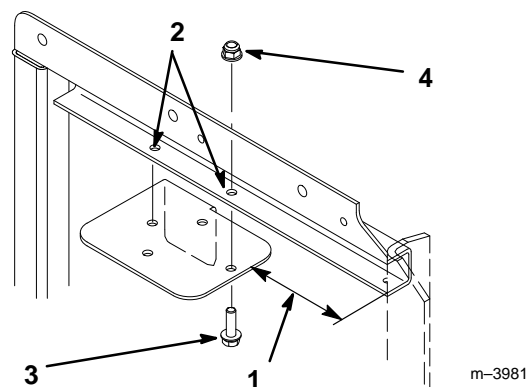


Figure 3

- | | |
|--|------------------------------|
| 1. 6-1/2" (165 mm) | 3. Bolt 5/16-18 x 1" (26 mm) |
| 2. Drill (2) 11/32" (9 mm) holes in left side engine frame | 4. flange locknut 5/16-18 |

4. Secure remote filter adapter to filter plate with (2) 5/16-18 x 1" (26 mm) bolts and (2) 5/16-18 flange locknuts (Fig. 4).

5. Thread (2) 1/4" NPTF fittings into remote filter adapter.

Note: Engine damage may occur with incorrect hose location.

6. Torque fittings to 65-80 in. lbs. (7-9 N•m).
7. Select oil hose from filter adapter "OUT" port (Fig. 2). Thread oil hose swivel end onto 1/4" NPTF fitting of remote oil filter mount port "A" (Fig. 4).

Note: Engine damage may occur with incorrect hose location.

8. Thread remaining oil hose onto other fitting (Fig. 4).
9. Torque hose swivel fittings to 65-80 in. lbs. (7-9 N•m).
10. Install cable tie around oil hoses and secure to fuel pump inlet or hydraulic hoses to prevent contact with blower belt or pulley.

11. Apply a thin coat of oil to filter rubber seal and thread oil filter onto remote filter adapter until it is snug, then turn an additional 1/2 turn (Fig. 4).
12. Install drain plug and fill engine with oil. Refer to: traction unit Operator's Manual.
13. Run engine and check for oil leaks.

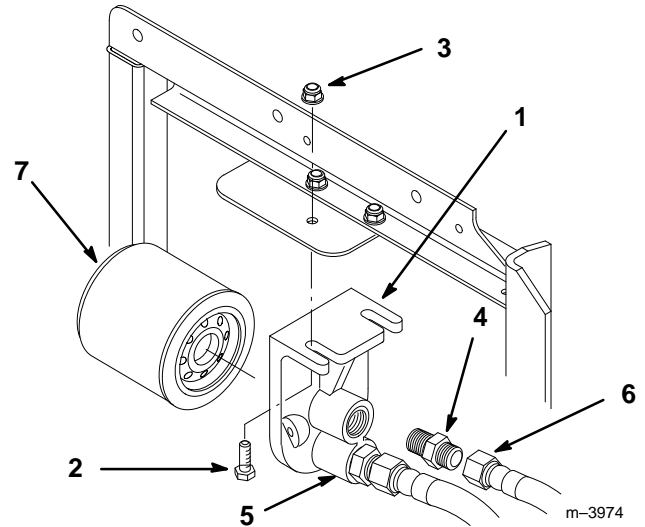


Figure 4

- | | |
|-----------------------------|-------------------------|
| 1. Remote filter adapter | 5. Port A (outer) |
| 2. Bolt 5/1618 x 1" (26 mm) | 6. Oil hose, swivel end |
| 3. flange locknut 5/16-18 | 7. Oil filter |
| 4. 1/4" NPTF fitting | |

