



## Right and Left Agricultural Wheels

for Dingo 222 Traction Units, Models 22304 and 22303

**Models**  
**22458 (Right) and 22461 (Left)**

### INSTALLATION INSTRUCTIONS

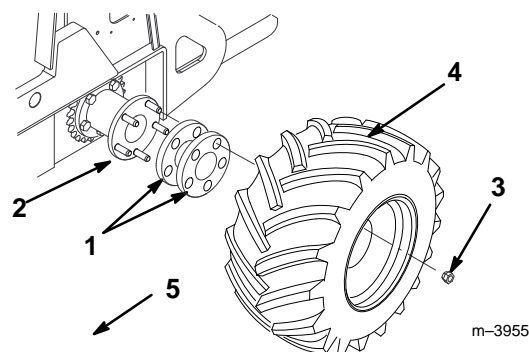
## Loose Parts

DESCRIPTION	QTY.	USE
Spacers	2	Install on traction unit
Wheel	1	
Warranty Registration Card	1	Read before use
Installation Instructions	1	
Parts Catalog	1	

## Installation

**Note:** The right and left sides of the traction unit are determined when standing in the operator's position. Ensure that you install only right hand agricultural wheels on the right side of the traction unit and left hand agricultural wheels on the left side. This will ensure that the tread on the tires point in the correct direction (Fig. 1).

1. Put the traction unit up on blocks and remove the wheel to be replaced.
2. Slide the (2) wheel spacers onto the studs on the wheel hub (Fig. 1).
3. Install the wheel and secure it with lug nuts (Fig. 1). Torque the lug nuts to 45 to 55 ft-lbs (61 to 74 N·m).



**Figure 1**

- |                  |             |
|------------------|-------------|
| 1. Wheel spacers | 4. Wheel    |
| 2. Wheel hub     | 5. To front |
| 3. Lug nut       |             |

4. Return the traction unit to the ground.