



PLENUM KIT
for OFZ GRASS COLLECTOR

PART NO. 99-0263

**INSTALLATION
INSTRUCTIONS**

Loose Parts

Note: Use the chart below to identify parts used for assembly.

DESCRIPTION	QTY.	USE
Spring bracket – long	1	Install spring and guard brackets
Guard bracket	1	
Bolt 3/8–16 x 1-1/4" (32 mm)	1	
Guide strap	3	Install guide straps
Bolt 1/4–24 x 3/4" (19 mm)	3	
Flange locknut 1/4–20	3	
Roller bracket	2	Install rear rollers
Bolt 3/8-16 x 3/4" (19 mm)	8	
Flange locknut 3/8–16	8	
Roller	2	
Bolt 1/2-13 x 4" (101 mm)	2	
Nut 1/2-13	2	
PTO cover	1	Install PTO support and cover
Cover support	1	
Bolt 5/16-18 x 3/4" (19 mm)	2	
Flange locknut 5/16-18	4	
Bolt 5/16-18 x 27/64" (11 mm)	2	
Chute bumper	1	Install chute bumper
Bolt 1/4–20 x 3/4" (19 mm)	2	
Flange locknut 1/4–20	2	
Hinge	1	Install chute hinge, spring and guard brackets
Pop rivet	9	
Spring bracket – short	1	
Bolt 1/4–20 x 3/4" (19 mm)	1	
Washer 1/4" (6 mm)	1	
Flange locknut 1/4–20	1	

DESCRIPTION	QTY.	USE
Hinge bracket	1	Install hinge bracket
Screw 10–24 x 1/2" (13 mm)	2	
Locknut 10–24	2	
Locking pin 3/8 x 6" (152 mm)	1	Install chute
Spring	1	
Parts Catalog	1	Save for ordering parts

Unit Preparation

Install Spring and Guard Brackets

1. Remove the existing spring and spring bracket from below the traction unit control plate (Fig. 1). Save the spring bracket for use on the chute.
2. Attach the new, long spring bracket below the traction unit control plate with the existing bolt in the front left hole, down from the top, and secure it with the existing locknut (Fig. 1). Hook the chute spring into the bracket.
3. Remove the existing hardware from the left brake bracket below the traction unit control plate (Fig. 1).
4. Attach the guard, below the brake bracket, with a new 3/8–16 x 1-1/4" (32 mm) bolt in the front hole. Include the cable and secure with the existing washer and locknut above the control plate. Use the existing rear bolt and locknut (Fig. 1).

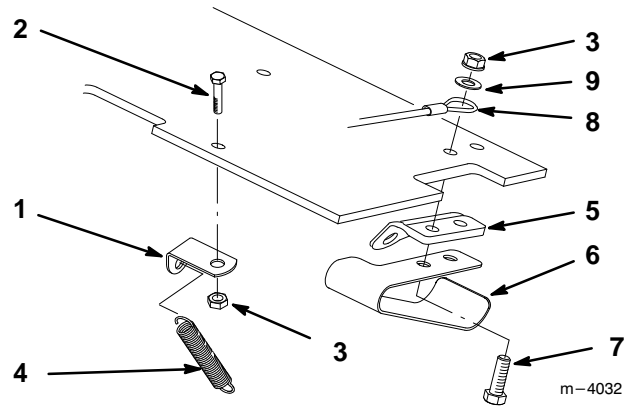


Figure 1

- | | |
|------------------------|---------------------------------|
| 1. Spring bracket–long | 6. Guard bracket |
| 2. Existing bolt | 7. Bolt 3/8-16 x 1-1/4" (32 mm) |
| 3. Existing locknut | 8. Cable |
| 4. Spring | 9. Existing washer |
| 5. Brake bracket | |

PROTOTYPE

Install Guides

Note: If you have a right angle drill, you can drill holes in the blower housing from the inside, using a guide strap as a template, and do not need to remove the housing; skip to step 2. If you have a regular drill you must complete step 1 to remove the blower housing before drilling holes.

1. Remove the blower housing, as follows:
 - A. Remove (4) locknuts from the front of the blower housing.
 - B. Remove (2) 5" capscrews from the upper part of the housing.
 - C. Remove (1) 3/8 x 3/4" capscrew from the inside of blower chute and slide the chute up and away from lower blower housing.
 - D. With the blower chute raised, pull the front blower housing forward and free from the rest of the housing.
2. Mark, center punch, and drill (3) 9/32" (7.5 mm) holes in the blower housing, as shown, for mounting the guides (Fig. 2).

Note: To ensure that the holes are aligned in the correct position, it is helpful to position a guide strap on the blower housing with upset toward blower opening and against flared flange (Fig. 3) when marking the holes.

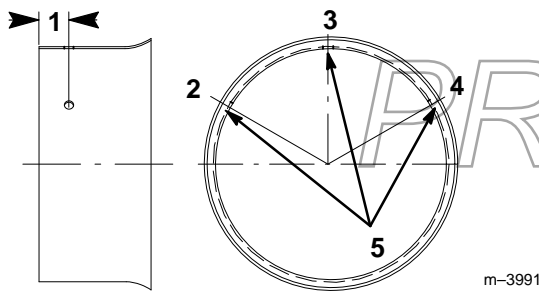


Figure 2

- | | |
|---------------------|--|
| 1. 57/64" (22.5 mm) | 5. Mark, center punch and drill (4) 9/32" (7.5 mm) holes in blower housing |
| 2. 10 O'clock | |
| 3. 12 O'clock | |
| 4. 2 O'clock | |

3. Place (3) guide straps outside the blower opening with the upset toward blower opening and against the flared flange (Fig. 3).

IMPORTANT: The guide straps should be pulled snug against the flared flange of the blower housing.

4. Secure each strap to the blower housing with a 1/4-20 x 3/4" (19 mm) bolt, through from the inside of the housing, and a 1/4-20 flange locknut (Fig. 3).

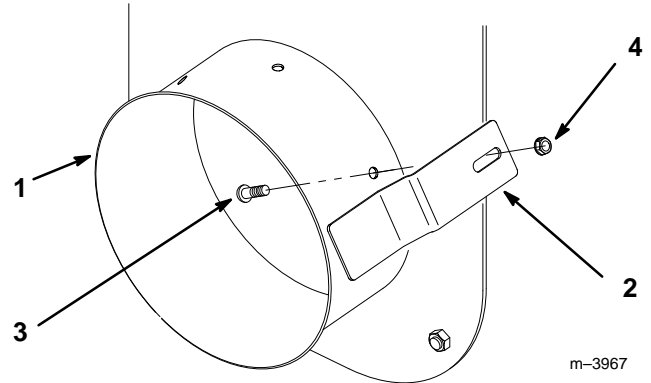


Figure 3

- | | |
|-------------------|-------------------------------|
| 1. Blower housing | 3. Bolt 1/4-20 x 3/4" (19 mm) |
| 2. Guide strap | 4. Flange locknut 1/4-20 |

5. Re-assemble the blower housing, if necessary, as follows:
 - A. Assemble the front blower housing to the main housing and slide the blower chute down over front of the housing.
 - B. Fasten the blower chute to the blower housing with the existing 5" capscrews and to the traction frame through the inside of chute. (Remount the hopper sensor when fastening the blower chute to the frame.)
 - C. Secure the front blower housing with the existing locknuts.

Note: Do not over torque the fasteners on the housing, causing binding.

Mower Preparation

For ease of performing these modifications, remove the mower from the carrier frame; refer to Mower Operator's Manual for instructions.

Install Rear Rollers

1. Remove the locknut, bolt, and roller from the mounting bracket.
2. Clamp the roller bracket against the rear of the mower next to the outer deck weld and flush with the bottom of the mower (Fig. 4).
3. Using the bracket as a guide, center punch and pilot drill (4) 1/4" holes, then drill (4) 13/32" (10.5 mm) holes in the mower (Fig. 4).
4. Insert (4) 3/8-16 x 1" (26 mm) bolts through from the inside of the mower and secure them with (4) 3/8-16 locknuts (Fig. 4).
5. Repeat on opposite side for the other roller bracket.
6. Select the proper hole position for the roller, depending on height-of-cut to be used; refer to Adjusting Rollers, page 7.

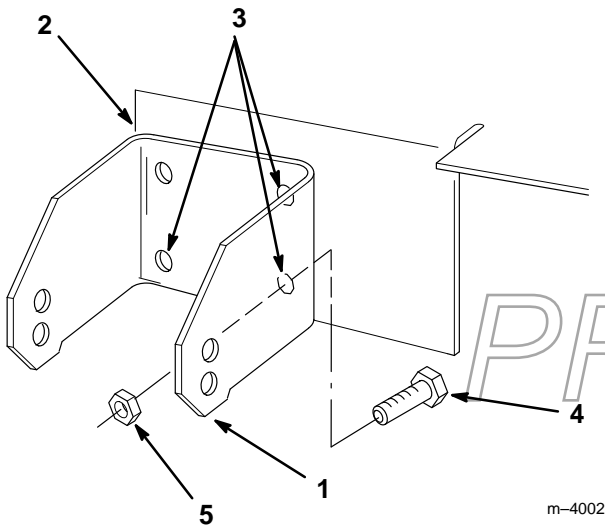


Figure 4

- | | |
|---|-----------------------------|
| 1. Roller bracket | 4. Bolt 3/8-16 x 1" (26 mm) |
| 2. Weld, existing | 5. Locknut 3/8-16 |
| 3. Center punch, pilot drill, then drill (4) 13/32" (10.5 mm) holes | |

Change Driveshaft PTO Cover

1. Remove the existing drive shaft, PTO cover, and cover support, if so equipped. Discard the cover and support.
2. Place a square along the discharge edge and align a new drive shaft cover support using the existing front hole, if present, or align as shown in Figure 5.
3. Using support as a guide, mark, center punch and drill (1 or 2), 11/32" (9 mm) hole(s) in the mower (Fig. 5).

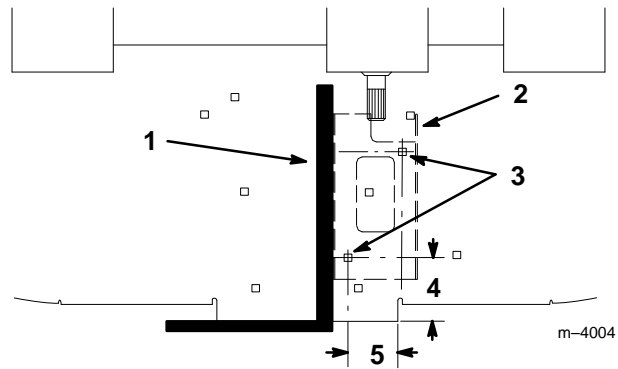


Figure 5

- | | |
|-----------------------------|------------|
| 1. Square | 4. 3" |
| 2. Cover support | 5. 2-5/16" |
| 3. Drill 11/32" (9 mm) hole | |

4. Secure the cover support to the mower with (2) 5/16-18 x 3/4" (19 mm) bolts and (2) 5/16-18 flange locknuts (Fig. 6).

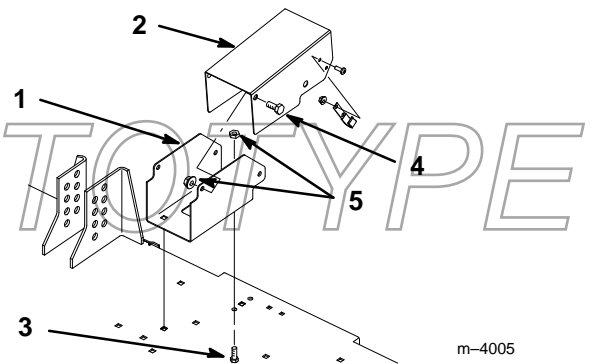


Figure 6

- | | |
|--------------------------------|---|
| 1. Cover support | 4. Shoulder bolt 5/16-18 x 27/64" (11 mm) |
| 2. PTO cover | 5. Flange locknut 5/16-18 |
| 3. Bolt 5/16-18 x 3/4" (19 mm) | |

- Position the chute bumper against the left inside of the cover, with the end formed outward as shown (Fig. 6 and 7).
- Secure the chute bumper to the cover with (2) 1/4-20 x 3/4" bolts and (2) 1/4-20 flange locknuts (Fig. 6 and 7).

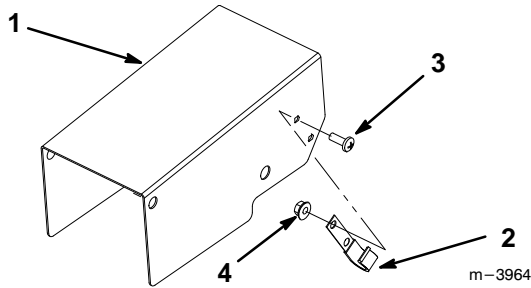


Figure 7

- | | |
|-----------------|-------------------------------|
| 1. PTO cover | 3. Bolt 1/4-20 x 3/4" (19 mm) |
| 2. Chute bumper | 4. Flange locknut 1/4-20 |

- Install the PTO cover onto the cover support with (2) 5/16-18 x 27/64" (11 mm) shoulder bolts and (2) 5/16-18 flange locknuts (Fig. 6).

Modify Chute

- Remove the narrow latch from the chute and discard.
- Measure for hole location as shown (Fig. 8).
- Mark and drill a 9/32" (7.5 mm) hole in the chute, as shown, for the short spring bracket (Fig. 8).
- Place the 1/4" (6 mm) washer and 1/4-20 x 3/4" (19 mm) bolt through the hole from the inside of the chute and secure the short spring bracket to the bolt with a 1/4-20 locknut (Fig. 8).

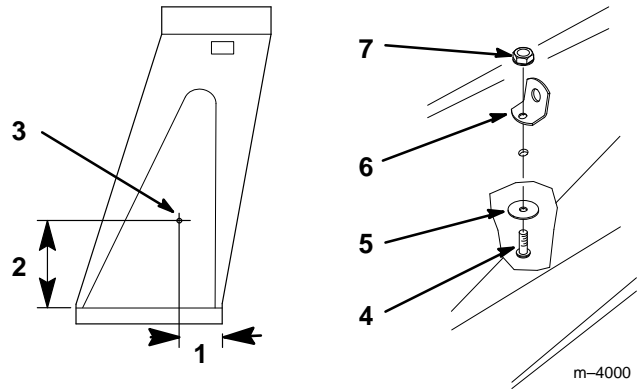


Figure 8

- | | |
|--|-------------------------------|
| 1. 2-5/8" (57 mm) | 4. Bolt 1/4-20 x 3/4" (19 mm) |
| 2. 5-7/8" (149 mm) | 5. Washer 1/4" (6 mm) |
| 3. Mark and drill 9/32" (7.5 mm) hole in chute | 6. Spring bracket-short |
| | 7. Locknut 1/4-20 |

PROTOTYPE

Install Hinge Bracket

1. Center the wide chute bracket across the front of the chute with the rear edge of the bracket aligned with the angle change on the chute (Fig. 9) and clamp it on top of the chute.
2. Using the wide chute bracket as a guide, drill (9) #20 holes in chute, as shown (Fig. 9).
3. Secure the wide chute bracket to chute with (9) 5/32" pop rivets, inserted up through the chute opening (Fig. 9).

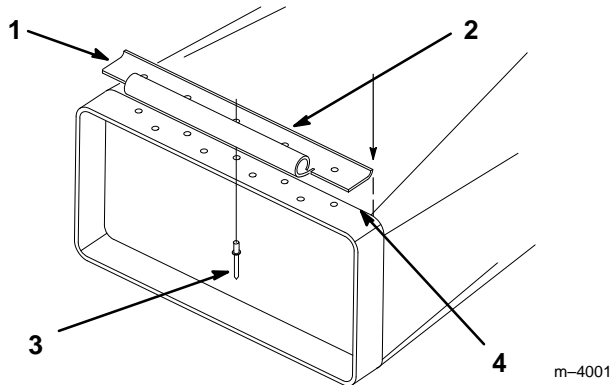


Figure 9

- | | |
|------------------------|--------------------|
| 1. Wide chute bracket | 3. Pop rivet 5/32" |
| 2. Drill (9) #20 holes | 4. Change of angle |

7. Mark, center punch, and drill (2) 17/64" (6.5 mm) holes on top of mower, using the hinge bracket as a template.
8. Secure the hinge bracket to the mower with (2) 10-24 x 1/2" (13 mm) screws, through from the bottom of mower, and (2) 10-24 locknuts (Fig. 11).

Note: The mounting holes on the hinge bracket are slotted. Ensure that you slide the bracket as far forward as possible.

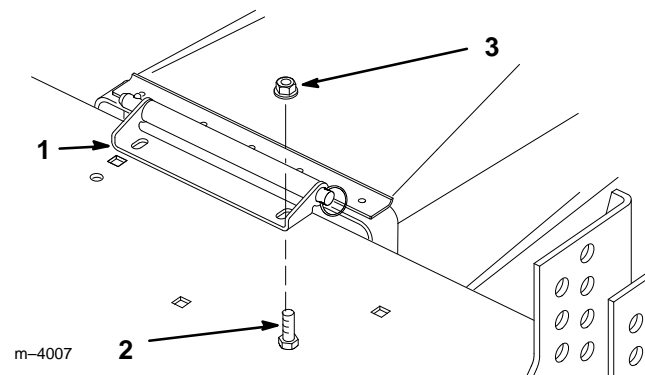


Figure 11

- | | |
|------------------------------|------------------|
| 1. Wide hinge bracket | 3. Locknut 10-24 |
| 2. Bolt 10-24 x 1/2" (13 mm) | |

4. Attach the wide hinge bracket to the chute with the locking pin (Fig. 10).

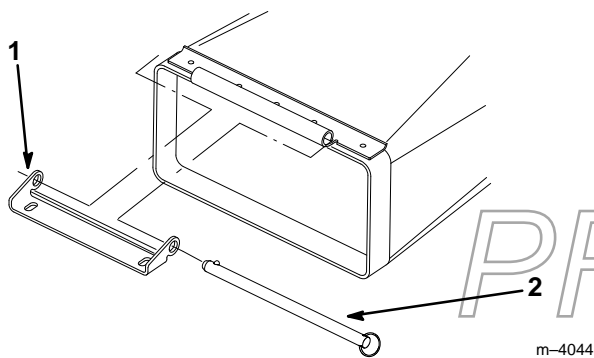


Figure 10

- | | |
|-----------------------|----------------|
| 1. Wide hinge bracket | 2. Locking pin |
|-----------------------|----------------|

5. Remove the narrow hinge plate from the mower and discard.
6. Tilt the mower up on its nose and slide the chute into position against the rear of the mower over the discharge area (Fig. 11).

9. Remove the locking pin securing the chute to the mower and remove the chute.

PROTOTYPE

Install Chute

1. Install the mower; refer to the Mower Operator's Manual
2. Raise the mower and slide the chute into the blower inlet, below the guide straps (Fig. 12).
3. Lower the mower and slide the chute forward against the rear of the mower. Secure the chute to the mower with the locking pin (Fig. 12).
4. Hook the free end of the spring you installed on the traction unit previously (Fig. 1) to the bracket on the top of the chute as shown in Figure 12.

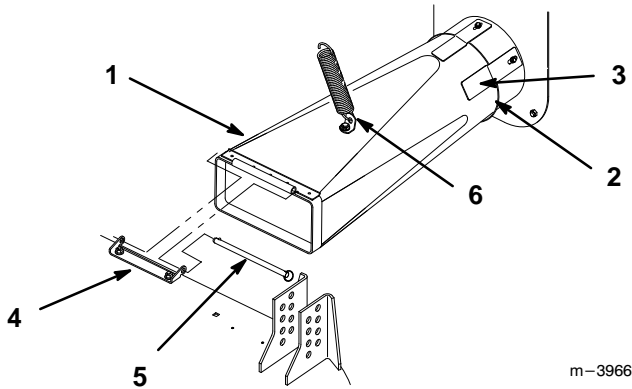


Figure 12

- | | |
|-----------------|----------------------------------|
| 1. Chute | 5. Locking pin 3/8 x 6" (152 mm) |
| 2. Blower inlet | 6. Spring and bracket |
| 3. Guide strap | |
| 4. Latch | |

Adjusting Rollers

The rollers must be adjusted to set the height-of-cut. To set a height-of-cut above 2" (51 mm), the rollers must be adjusted to the lower hole location. To set the height-of-cut to the 1" or 1-1/2" (25 or 39 mm) position, the rollers must be adjusted to the upper hole location.

1. After adjusting height-of-cut, tilt the mower to adjust the front roller, refer to; Tilting Mower.
 2. Remove the locknut and bolt to change the hole location (Fig. 13).
 3. Select the proper hole position for the height-of-cut to be used (Fig. 13).
 4. Insert the 1/2-13 x 4" (101 mm) bolt through the roller and secure it with the 1/2-13 locknut (Fig. 13).
- Note:** Do not overtighten the roller mounting bolt; rollers must turn freely.
5. Lower the mower, refer to; Tilting Mower, then repeat the adjustment on the rear rollers.

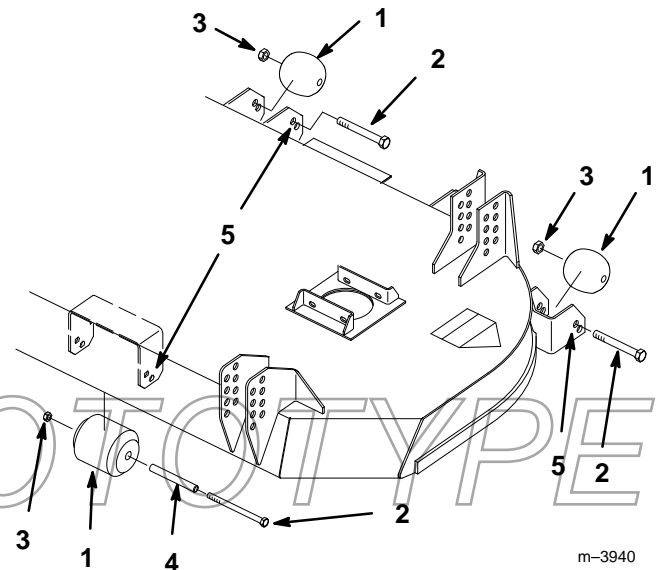


Figure 13

- | | |
|------------------------------|-----------|
| 1. Roller | 4. Spacer |
| 2. Bolt 1/2-13 x 4" (101 mm) | 5. Holes |
| 3. Locknut 1/2-13 | |



PROTOTYPE