



Form No. 3392-713 Rev B

Count on it.

Operator's Manual

1/3 Area Platform Lift
Workman® Heavy-Duty Utility Vehicle

Model No. 07347—Serial No. 31500001 and Up



⚠ WARNING

**CALIFORNIA
Proposition 65 Warning**

This product contains a chemical or chemicals known to the State of California to cause cancer, birth defects, or reproductive harm.

Use of this product may cause exposure to chemicals known to the State of California to cause cancer, birth defects, or other reproductive harm.

Contents

- Safety 3
 - Before Operating 3
 - While Operating 3
 - Maintenance 3
 - Safety and Instructional Decals 4
- Setup 6
 - 1 Preparing to Install the Kit 7
 - 2 Removing the Center Console, Seat Shroud, and Seat Assemblies 7
 - 3 Removing the CVT Cooling Duct (HDX-Auto only) 9
 - 4 Installing the Main Wire Harness and Relays 9
 - 5 Mounting the Parking Brake Switch 10
 - 6 Mounting the Rear Level Switch 12
 - 7 Installing the Hood, ROPS Shield Shroud, Seats, Seat Shroud, Console Cover Plates, and CVT Intake Hose (HDX-Auto only) 13
 - 8 Mounting the Lift onto the Machine Frame 13
 - 9 Connecting the Wire Harness and Battery 14
 - 10 Mounting the Bubble Level Indicator 15
 - 11 Installing the Decals 16
- Product Overview 17
 - Controls 17
- Operation 18
 - Checking the Oil Level 18
 - Checking the Tire Pressure 18
 - Engaging Safety Locks 18
 - Operating the Lift 19
 - Operating Tips 21
- Maintenance 22
 - Checking the Safety Circuits 22
 - Maintaining the Battery 23

Introduction

Read this information carefully to learn how to operate and maintain your product properly and to avoid injury and product damage. You are responsible for operating the product properly and safely.

You may contact Toro directly at www.Toro.com for product and accessory information, help finding a dealer, or to register your product.

Whenever you need service, genuine Toro parts, or additional information, contact an Authorized Service Dealer or Toro Customer Service and have the model and serial numbers of your product ready.

This manual identifies potential hazards and has safety messages identified by the safety-alert symbol (Figure 1), which signals a hazard that may cause serious injury or death if you do not follow the recommended precautions.



Figure 1

g000502

This manual uses 2 words to highlight information. **Important** calls attention to special mechanical information and **Note** emphasizes general information worthy of special attention.

Safety

Before Operating

- Read and understand the contents of this manual before operating the platform lift. Become familiar with all controls and know how to stop the machine quickly. A replacement manual is available at www.Toro.com.
- Do not allow children to operate the lift. Do not allow adults to operate the lift without proper instruction.
- Keep all shields and safety devices in place. If a safety device, shield or decal malfunctions, becomes damaged or illegible, replace it before operation is commenced. To ensure that the lift is in safe operating condition, tighten any loose nuts, bolts, and screws.

While Operating

- Do not use the machine near electrical power lines. Never allow the platform lift to touch power lines.
- Do not use the platform lift during lightning, thunderstorms, or high winds.
- Do not move the machine while the platform is raised.
- Engage the parking brake before raising the platform. Use a wheel chock.
- Never release the parking brake while the platform is raised.
- Check the safety interlocks before each use of the platform. See the machine *Operator's Manual* for safety interlock check instructions.
- Do not bypass the safety interlocks.
- Do not allow riders on the platform in any position.
- Always park the machine on a firm, level surface before raising the platform.
- Do not exceed a 5-degree maximum angle of operation.
- Do not raise the platform if the bubble level indicator is outside the recommended operating range.
- Do not raise the platform if 1 or more of the machine tires are under inflated; check the tire pressure daily.
- Do not pull on objects while reaching from a raised platform.
- Do not use the platform for carrying or lowering tree limbs, branches, or heavy or uneven loads.

- Do not exceed the capacity of the platform lift; 1 person with the equipment should not to exceed 272 kg (600 lb).
- Always wear a hard hat and eye protection while operating the platform or while in area below the platform.
- Do not drop or throw articles from a raised platform.
- When raising the platform, be aware of overhead obstructions that could cause bodily injuries.
- Stand clear of the scissor arms while the platform is moving.
- Ensure that the area is clear of bystanders before lowering the platform.

Maintenance

- Always remove the key from the lift control box when the platform is not in use.
- Ensure that the lift is in a safe operating condition. Keep all nuts, bolts, and screws tightened.
- Do not work under a raised platform without the lift safety blocks installed.

Safety and Instructional Decals



Safety decals and instructions are easily visible to the operator and are located near any area of potential danger. Replace any decal that is damaged or missing.

⚠ DANGER

IMPROPER OPERATION OF PLATFORM LIFT MAY CAUSE SERIOUS PERSONAL INJURY OR DEATH. TO REDUCE RISK TO OPERATOR AND BYSTANDERS:

- READ AND UNDERSTAND ALL SAFETY INSTRUCTIONS IN WORKMAN AND PLATFORM LIFT OPERATOR'S MANUALS AND WARNING LABELS.
- NEVER USE PLATFORM LIFT WITHOUT PROPER TRAINING AND AUTHORIZATION.
- ESTA MAQUINA PUEDE SER RIESGOSA SI SE USA EN UNA MANERA INAPROPIADA. OPERADORES DEBEN ESTAR MUY BIEN ENTRENADOS EN LA MANERA PROPIA DE OPERAR LA MAQUINA.

FOR REPLACEMENT MANUAL, SEND COMPLETE MODEL AND SERIAL NUMBER TO:
 THE TORO COMPANY
 8111 LYNDALE AVE. S.
 BLOOMINGTON, MN 55420-1196

93-3701

93-3701

decal93-3701

⚠ DANGER

LOSS OF CONTROL OR TIP-OVER WILL RESULT IF VEHICLE IS MOVED WITH PLATFORM IN RAISED POSITION AND MAY CAUSE SERIOUS PERSONAL INJURY TO OPERATOR OR BYSTANDERS.

- NEVER MOVE VEHICLE WHILE PLATFORM IS RAISED.
- ALWAYS APPLY PARKING BRAKE BEFORE RAISING PLATFORM. WHEEL CHOCK USE IS RECOMMENDED.
- NEVER RELEASE PARKING BRAKE WHILE PLATFORM IS RAISED.
- CHECK SAFETY INTERLOCKS BEFORE EACH USE OF PLATFORM. SEE OPERATOR'S MANUAL FOR SAFETY INTERLOCK CHECK INSTRUCTIONS.
- NEVER BYPASS SAFETY INTERLOCKS.
- NEVER ALLOW RIDERS ON PLATFORM IN ANY POSITION.

93-3703

93-3703

decal93-3703

⚠ DANGER

CONTACT BETWEEN NON-INSULATED PLATFORM LIFT AND POWER LINES WILL CAUSE ELECTROCUTION. ELECTROCUTION WILL CAUSE SERIOUS PERSONAL INJURY OR DEATH.

- NEVER USE PLATFORM LIFT NEAR POWER LINES.
- NEVER ALLOW PLATFORM LIFT TO TOUCH POWER LINES.
- IF POWER LINE CONTACT OCCURS:
 - LOWER UNIT AWAY FROM CONTACT IF POSSIBLE.
 - DO NOT TOUCH POWER LINE.
 - NEVER TOUCH GROUND WHILE TOUCHING PLATFORM LIFT OR POWER LINE.
 - JUMP CLEAR IF NECESSARY, WITHOUT TOUCHING PLATFORM OR POWER LINE.
- IF OPERATING PLATFORM LIFT NEAR ELECTRICAL, HIGH PRESSURE OF ANY TYPE OR ROTATING EQUIPMENT:
 - ALWAYS DISCONNECT POWER TO THAT EQUIPMENT.
 - ALWAYS USE OSHA APPROVED LOCK-OUT DEVICES.
- NEVER USE PLATFORM LIFT DURING A THUNDER OR LIGHTNING STORM.

93-3702

93-3702

decal93-3702

⚠ DANGER

TIP-OVER OF WORKMAN VEHICLE WHILE PLATFORM IS RAISED WILL RESULT IN PERSONAL INJURY TO OPERATOR AND/OR BYSTANDERS.

- ALWAYS PARK VEHICLE ON FIRM, LEVEL SURFACE BEFORE RAISING PLATFORM.
- NEVER EXCEED 5 DEGREE MAXIMUM ANGLE OF OPERATION.
- NEVER RAISE PLATFORM IF BUBBLE LEVEL INDICATOR IS OUTSIDE RECOMMENDED OPERATING RANGE.
- NEVER RAISE PLATFORM IF ONE OR MORE VEHICLE TIRES ARE UNDERINFLATED; CHECK TIRE PRESSURE DAILY.
- NEVER PULL ON OBJECTS WHILE REACHING FROM RAISED PLATFORM.
- NEVER USE PLATFORM FOR CARRYING OR LOWERING TREE LIMBS, BRANCHES OR HEAVY OR UNEVEN LOADS.
- NEVER EXCEED CAPACITY OF PLATFORM LIFT (ONE PERSON WITH EQUIPMENT NOT TO EXCEED 600 LBS/272 KG.)
- NEVER RAISE PLATFORM DURING HIGH WINDS OR THREATENING WEATHER.
- NEVER BY-PASS SAFETY INTERLOCKS.
- NEVER ALLOW RIDERS ON PLATFORM IN ANY POSITION.

93-3704

93-3704

decal93-3704

⚠ DANGER

CONTACT WITH MOVING SCISSOR ARMS CAN CAUSE PERSONAL INJURY.

- STAND CLEAR OF SCISSOR ARMS WHILE PLATFORM IS MOVING.
- MAKE SURE AREA IS CLEAR OF BYSTANDERS BEFORE LOWERING PLATFORM.
- NEVER WORK UNDER RAISED PLATFORM WITHOUT LIFT SAFETY BLOCK INSTALLED.
- ALWAYS REMOVE KEY FROM LIFT CONTROL BOX WHEN PLATFORM IS NOT IN USE.

93-3706

93-3706

decal93-3706



93-3709

decal93-3709

IMPORTANT EMERGENCY LOWERING PRECAUTIONS:

- REACH INTO THE ACCESS OPENING ONLY TO ACTIVATE THE EMERGENCY LOWERING VALVE.
- PUSH AND TURN THE BLUE KNOB ON THE SOLENOID TO ACTIVATE EMERGENCY LOWERING VALVE.
- DO NOT PLACE HANDS OR FEET ON SCISSORS ARMS OR OTHER SUPPORTING STRUCTURE WHILE THE PLATFORM LIFT IS COMING DOWN.
- IF OPERATOR IS STRANDED UP IN THE LIFT, MAKE EVERY ATTEMPT POSSIBLE TO ALERT SOMEONE TO ASSIST IN ACTIVATING THE EMERGENCY LOWERING VALVE.
- USE EXTREME CAUTION IF YOU MUST CLIMB DOWN FROM THE DISABLED LIFT.

93-3711

decal93-3711

93-3711

⚠ WARNING

OPERATION OF PLATFORM LIFT WITHOUT PARKING BRAKE ENGAGED CAN RESULT IN TIP-OVER AND PERSONAL INJURY.

- ALWAYS APPLY PARKING BRAKE BEFORE OPERATING PLATFORM LIFT. THE USE OF WHEEL CHOCKS IS RECOMMENDED.
- DO NOT RELEASE PARKING BRAKE WHILE PLATFORM LIFT IS RAISED.
- DO NOT RAISE THE PLATFORM LIFT IF THE BUBBLE IS OUTSIDE OF THE OPERATING REGION OF THE LEVEL INDICATOR. 93-3710

93-3710

decal93-3710

⚠ DANGER **FALLING OBJECTS AND OVERHEAD OBSTRUCTIONS CAN CAUSE PERSONAL INJURY.**

- ALWAYS WEAR HARD HAT AND EYE PROTECTION WHILE OPERATING PLATFORM OR WHILE IN AREA BELOW PLATFORM.
- KEEP BYSTANDERS AWAY FROM AREA BELOW RAISED PLATFORM WHILE OVERHEAD WORK IS PERFORMED.
- NEVER DROP OR THROW ARTICLES FROM RAISED PLATFORM.
- WHEN RAISING PLATFORM BE ALERT FOR OVERHEAD OBSTRUCTIONS WHICH COULD CAUSE EYE, HEAD OR CRUSHING INJURIES.

93-3705

decal93-3705

⚠ DANGER **FALLING OR JUMPING FROM RAISED PLATFORM WILL CAUSE PERSONAL INJURY.**

- SECURE BOTH HANDRAIL SNAP CHAINS ACROSS OPENING BEFORE RAISING PLATFORM.
- NEVER PULL ON OBJECTS WHILE REACHING FROM RAISED PLATFORM.
- NEVER REACH OVER HANDRAILS UNLESS BOTH FEET ARE ON PLATFORM DECK.
- NEVER STEP ABOVE LEVEL OF PLATFORM DECK OR USE LADDERS, STEP RISERS OR PLATFORM RAILS TO EXTEND WORKING HEIGHT OF PLATFORM.
- IF YOU MUST EXIT RAISED PLATFORM, SLOWLY AND CAREFULLY CLIMB DOWN OUTSIDE OF SCISSOR ARM FRAME.

93-3707

decal93-3707

Installation

Loose Parts

Use the chart below to verify that all parts have been shipped.

Procedure	Description	Qty.	Use
1	No parts required	–	Prepare to install the kit.
2	No parts required	–	Remove the center console, seat shroud, and seat assemblies.
3	No parts required	–	Remove the CVT cooling duct (HDX-Auto only).
4	Main wire harness with relays Cable tie Screw (1/4 x 3/4 inch) Nut (1/4 inch) Fuse Mini fuse (Workman HDX-Auto only)	1 7 2 2 1 1	Install the main wire harness and relays.
5	Parking brake switch Hex-head screw (3/8 inch) Wire harness—3 ft extension (HDX-Auto only) Bracket (HDX-Auto only) Bolt—1/4-20 (HDX-Auto only) Plate (HDX-Auto only) Locknut (HDX-Auto only) Flat washer (HDX-Auto only)	1 2 1 1 1 1 1 3	Mount the parking brake switch.
6	Rear level switch bracket Rear level switch with the harness Washer	1 1 2	Mount the rear level switch.
7	No parts required	–	Install the hood, ROPS shield shroud, seats, seat shroud, console cover plates, and CVT intake hose (HDX-Auto only).
8	Reinforcing plate Flange HD capscrew (3/8 x 1 inch) Flange nut (3/8 inch)	2 4 4	Mount the lift onto the machine frame.
9	Battery cable with boot Negative battery cable	1 1	Connect the wire harness and battery.
10	Bubble level indicator	1	Mount the bubble level indicator.
11	Operation decal No-step decal	1 2	Install the decals.

The 1/3 platform lift is designed to be used only with a Workman Vehicle and must be mounted with the wire harness, level, decals, switches, and all interlock switches installed. The 1/3 platform lift will only work on Workman 3000 and Workman 4000 Series machines with serial numbers 240000001 and up and all Workman HD, HDX, HDX-D, and HDX-Auto vehicles.

1

Preparing to Install the Kit

No Parts Required

For Workman 3000 and Workman 4000 Series machines with Serial Numbers 240000001 and Up

1. Position the machine on a clean, level surface, shut off the engine, engage the parking brake, and remove the key from the ignition switch.
2. Disconnect the positive cable from the battery.
3. Remove the 6 screws and nuts securing the bumper to the machine frame and remove the bumper.
4. Remove the 7 screws securing the front hood to the machine frame and remove the hood.

For Workman HD, HDX, HDX-D, and HDX-Auto machines

1. Position the machine on a clean, level surface, shut off the engine, engage the parking brake, and remove the key from the ignition switch.
2. Disconnect the positive cable from the battery.
3. Raise or remove the bed from the machine if equipped.

Note: Refer to the machine *Operator's Manual* for more detailed information on raising and removing the bed.

4. Remove the hood.

Note: Refer to the machine *Operator's Manual* for more detailed information on removing the hood.

2

Removing the Center Console, Seat Shroud, and Seat Assemblies

No Parts Required

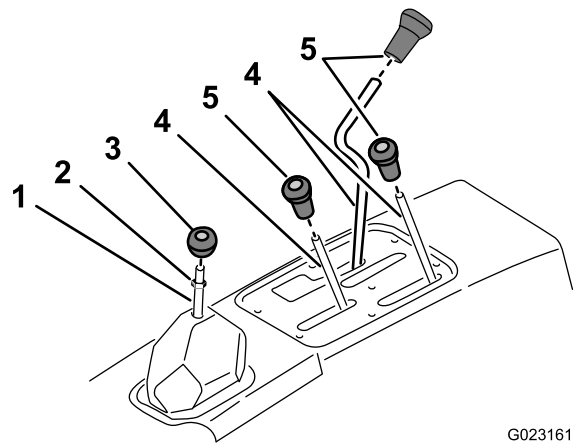
Removing the Center Console for Workman 3000, 4000, HD, HDX, and HDX-D Machines

CAUTION

Pressurized hot coolant escaping can cause serious burns.

Allow the engine to cool enough to touch before the removing overflow tube or radiator cap.

1. Unscrew and remove all knobs from the control levers and from the gear shift lever (Figure 2).



G023161
g023161

Figure 2

1. Gear shift lever
2. Jam nut
3. Shifter handle
4. Control lever
5. Control knob

2. Remove the jam nut from the gear shift lever (Figure 2).
3. Remove the 6 screws securing the outside edge of the cover plate of the center console to the chassis and remove the cover plate (Figure 3).

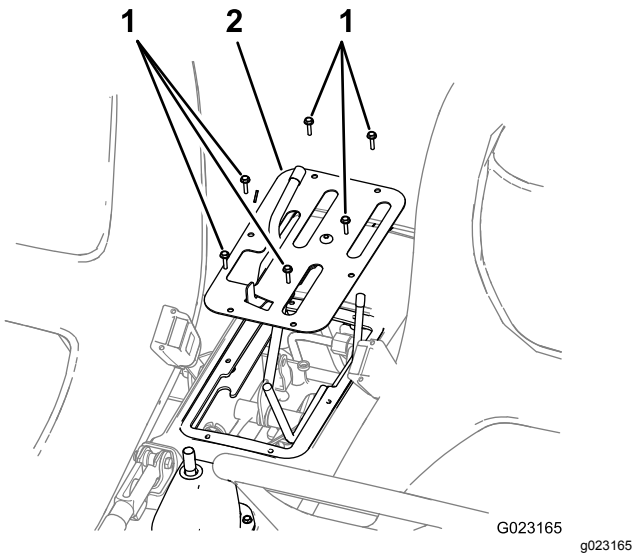


Figure 3

1. Screw
2. Cover plate

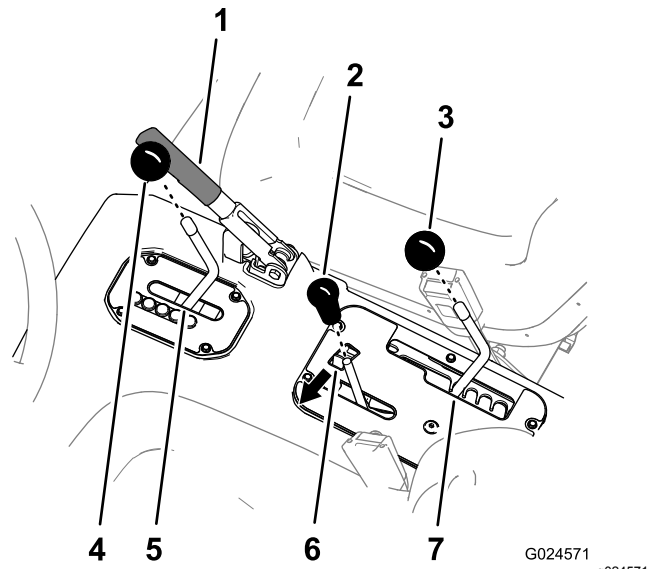


Figure 4

1. Brake lever
2. Hydraulic-lift lever knob
3. Speed-range lever knob
4. Transmission lever knob
5. Transmission lever (L position) knob
6. Hydraulic-lift lock (locked position — left)
7. Speed-range lever (A position)

4. Disconnect the reservoir hose from the radiator and plug or clamp it to retain coolant (Figure 3).

Note: If your machine is equipped with a black pressurized tank, leave the hoses connected and lift the tank off the shroud.

5. Remove the operator shield from the ROPS.

Removing the Center Console Panel from the Workman HDX-Auto Machines

1. Remove all knobs from console levers and from the transmission lever by rotating the knobs counterclockwise (Figure 4).

2. Remove the 4 hex-head screws that secure the shift-indicator cover to the seat shroud (Figure 5).

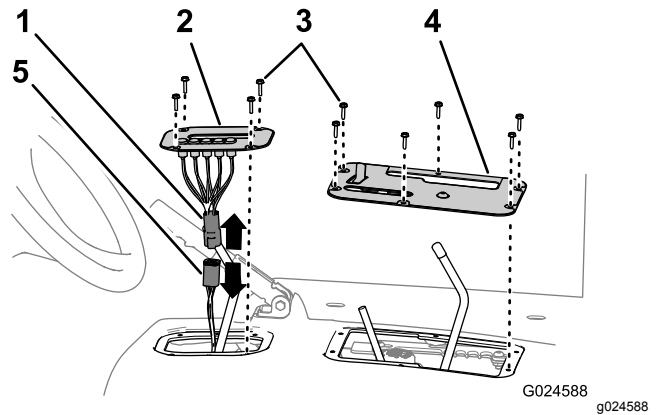


Figure 5

1. Indicator connector
2. Shift-indicator cover
3. Hex-head screws
4. Control cover
5. Machine-harness connector

3. Lift the shift indicator up, disconnect the indicator connector from the machine-harness connector, and remove the indicator cover from the machine (Figure 5).
4. Remove the 6 hex-head screws that secure the control cover to the seat shroud, and remove the control cover (Figure 5).

Removing the Seats from the Machines

Remove the 8 socket-head bolts that secure the seat rails of the seat to the chassis and remove the seats (Figure 6).

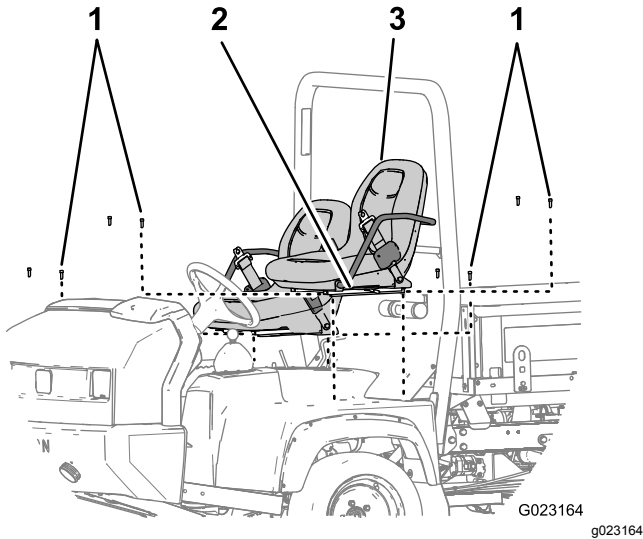


Figure 6

1. Socket-head bolts
2. Seat rail
3. Seat

3

Removing the CVT Cooling Duct (HDX-Auto only)

No Parts Required

Procedure

Remove the hose clamp that secures the CVT cooling duct to the flange of the CVT intake at the back of the ROPS panel on the passenger side (Figure 7).

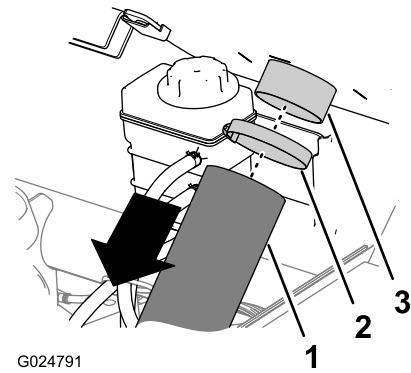


Figure 7

1. CVT intake hose
2. Hose clamp
3. Intake-tube connector

4

Installing the Main Wire Harness and Relays

Parts needed for this procedure:

1	Main wire harness with relays
7	Cable tie
2	Screw (1/4 x 3/4 inch)
2	Nut (1/4 inch)
1	Fuse
1	Mini fuse (Workman HDX-Auto only)

For the Workman 3000 and Workman 4000 Series machines with Serial Numbers 24000001 and Up

1. Insert the end of the wire harness, with the male and female spade terminals on it, up through the opening in the machine floor board, toward the dash panel, following the machine wire harness.
2. Secure the harness to the machine wire harness with 2 cable ties.
3. Locate the red/black wire connected to terminal I of the ignition switch.
4. Remove the wire from terminal I and plug it into the appropriate wire harness terminal.
5. Plug the remaining harness terminal onto the ignition switch on terminal I.

6. Remove the fasteners securing the wire harness cover to the underside of the machine floor and remove the cover.
7. Route the wire harness rearward to the console area.
Note: The harness must not interfere with any hot (exhaust) or moving parts.
8. Secure the harness with cable ties.
9. Mount the relays to the left frame channel with 2 screws (1/4 x 3/4 inch) and 2 nuts (1/4 inch) as shown in [Figure 8](#).

Note: If the machine is equipped with high flow hydraulics, locate another suitable mounting location.

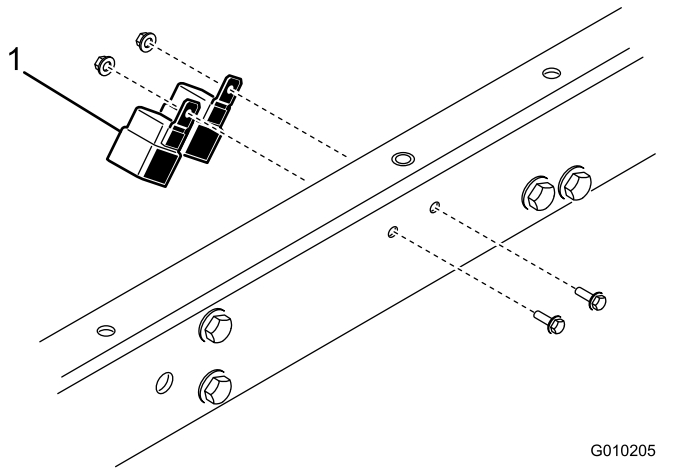


Figure 8

1. Relays

For Workman HD, HDX, HDX-D, and HDX-Auto Machines

1. Insert the end of the wire harness, with the male and female spade terminals on it, up through the opening in machine floor board.
2. Locate an empty slot in the fuse block.
Note: If there is not an empty slot available, an additional fuse block will have to be added.
3. Insert the included fuse into the empty fuse block slot and connect the wire harness spade terminal to the corresponding spade terminal on the fuse block.
Note: For HDX-Auto machines, use the mini fuse.
4. Cover the unused terminal with electrical tape.
Note: Use either the male or female terminal that corresponds to your machine.

5. Remove the fasteners securing the wire harness cover to the underside of the machine floor and remove the cover.
6. Route the wire harness rearward to the console area.
Note: The harness must not interfere with any hot (exhaust) or moving parts.
7. Secure the harness with cable ties.
8. Mount the relays to the left frame channel with 2 screws (1/4 x 3/4 inch) and 2 nuts (1/4 inch) as shown in [Figure 8](#).

Note: If the machine is equipped with high flow hydraulics, locate another mounting location.

5

Mounting the Parking Brake Switch

Parts needed for this procedure:

1	Parking brake switch
2	Hex-head screw (3/8 inch)
1	Wire harness—3 ft extension (HDX-Auto only)
1	Bracket (HDX-Auto only)
1	Bolt—1/4-20 (HDX-Auto only)
1	Plate (HDX-Auto only)
1	Locknut (HDX-Auto only)
3	Flat washer (HDX-Auto only)

Mounting the Parking Brake Switch for the HDX-Auto Machines

The HDX-Auto machine has a parking-brake switch that is used for controlling the rear differential. Leave this existing switch and wire harness and install the parking-brake switch from this kit in the alternate position described in the steps below.

1. Loosely install the parking brake switch onto the bracket, using the plate, carriage bolt, and nut, as shown in Box A of [Figure 9](#).

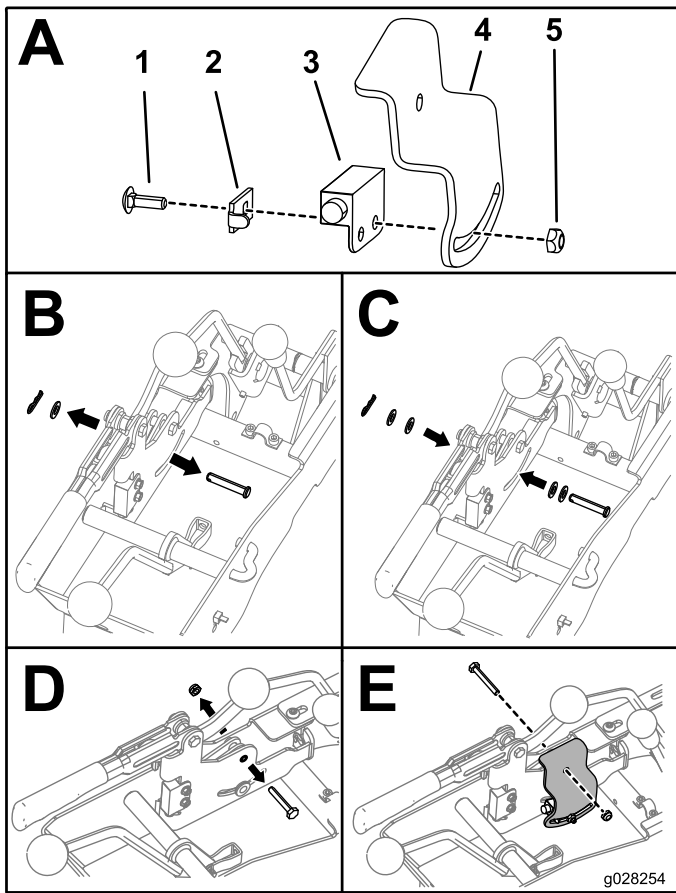


Figure 9

- | | |
|------------------|------------|
| 1. Carriage bolt | 4. Bracket |
| 2. Plate | 5. Nut |
| 3. Switch | |

2. Remove the hairpin, clevis pin, and washer securing the parking brake cable to the bellcrank, as shown in Box B of [Figure 9](#).
3. Place 2 washers on the clevis pin and slide it back into the previous position; Box C of [Figure 9](#).
4. Place the washer previously removed as well as an additional washer onto the end of the clevis pin and secure the clevis pin with the hairpin; Box C of [Figure 9](#).
5. Remove the bolt (1/4-20 x 1 1/2 inch) on the parking brake bellcrank as shown in Box D in [Figure 9](#).
6. Insert the bolt (1 3/4 inch) with the head of the bolt to the right, slide the bracket with the switch onto the bolt, and secure the bolt with the nut previously removed; Box E in [Figure 9](#).
7. Align the target icon on the switch with the head of the clevis pin and tighten the switch ([Figure 10](#)).

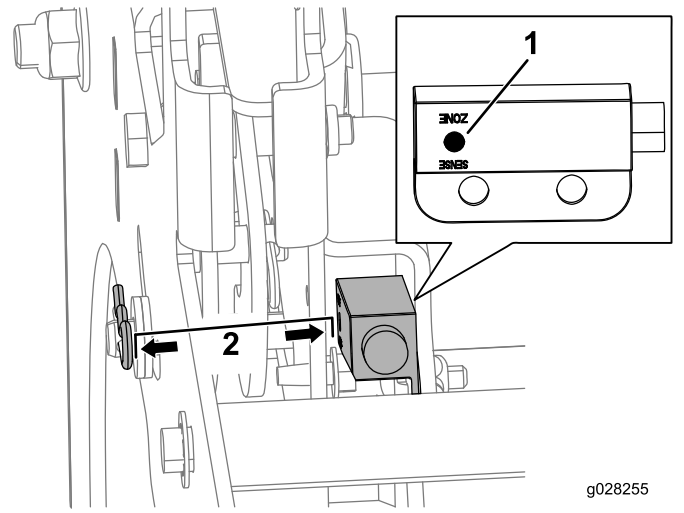


Figure 10

1. Target icon on the switch
2. Gap (between 0.06 and 0.1 inch)

8. Ensure that the gap between the head of the clevis pin and the switch should be between 0.06 and 0.1 inch.

Note: If the gap is not correct, adjust the head of the pin by moving the position of the washers installed in steps 3 and 4.

9. Connect the terminal from the lift harness marked Parking Brake to the parking-brake switch.
10. Locate the loop back connector labeled 1/3 Lift on the machine wire harness located below the controls to the rear of the controls bracket.
11. Remove the loop back connector and connect it to the 3 ft extension harness.
12. Route the extension harness up toward the parking brake, following the machine wire harness, and connect it to the connector on the lift harness marked 1/3 Vertical Lift.

Mounting the Parking Brake Switch Workman Models with a Manual Transmission

1. Mount the parking brake switch to the parking brake mount with 2 screws as shown in [Figure 11](#).

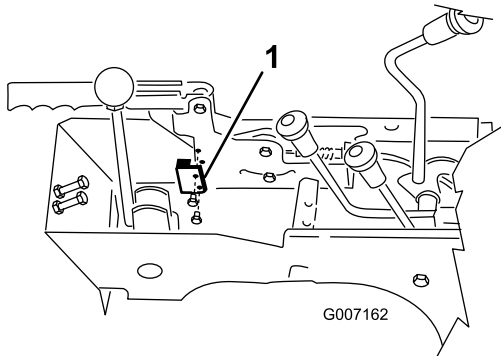


Figure 11

1. Switch

2. Plug the switch wire connector into the lift wire connector harness.
3. Remove the loop back connector from the machine wire harness labeled 1/3 lift.
4. Connect the lift wire harness to the machine wire harness.

6

Mounting the Rear Level Switch

Parts needed for this procedure:

1	Rear level switch bracket
1	Rear level switch with the harness
2	Washer

For Workman 3000 and Workman 4000 Series machines with Serial Numbers 240000001 and Up

1. Remove the locknuts securing the top of the hitch plate to the rear axle ([Figure 12](#)).

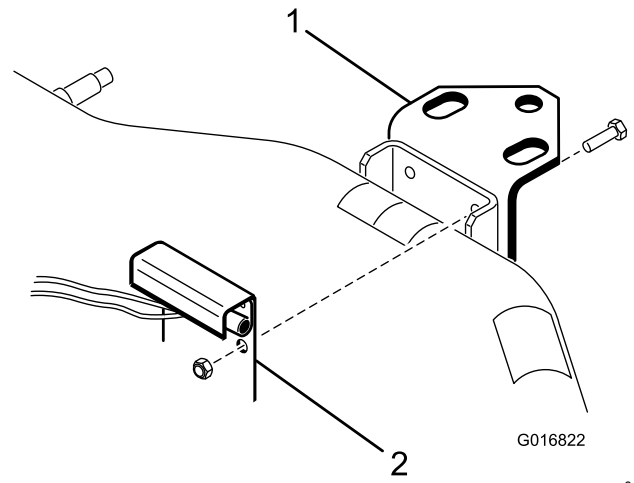


Figure 12

1. Hitch plate
2. Level switch bracket

2. Using the upper set of mounting holes, mount the level switch bracket to the rear axle with the locknuts previously removed.
3. Route the switch harness forward, along the differential lock cable to the left side of the machine.
Note: The harness must not interfere with any hot (exhaust) or moving parts.
4. Secure the harness to the differential lock cable with cable ties.

For Workman HD, HDX, HDX-D, and HDX-Auto machines

1. Remove the capscrews securing the hitch plate to the rear axle ([Figure 13](#)).

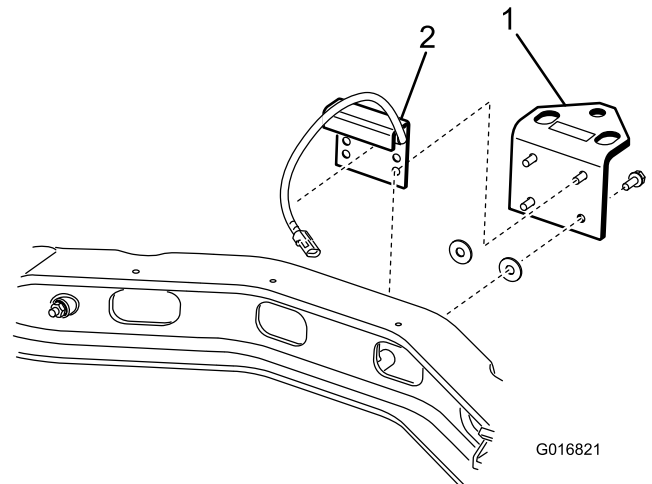


Figure 13

1. Hitch plate
2. Level switch bracket

2. Using the lower set of mounting holes, loosely mount the 2 washers, and level the switch

bracket to the rear axle with the capscrews previously removed.

Note: Position the washers between the hitch plate and axle.

3. Tighten the 4 capscrews.
4. Route the switch harness forward, along shift the cable to the left side of the machine.

Note: The harness must not interfere with any hot (exhaust) or moving parts.

5. Secure the harness to the shift cable with cable ties.

7

Installing the Hood, ROPS Shield Shroud, Seats, Seat Shroud, Console Cover Plates, and CVT Intake Hose (HDX-Auto only)

No Parts Required

Procedure

1. Install the hood to the frame.
2. Install the ROPS shield shroud, seats, seat shroud, and console cover plate, if applicable.
3. Install the overflow tube to the radiator.
4. **Workman HDX-Auto only:** Install the CVT intake hose.
5. Check the coolant level and fill as needed.

8

Mounting the Lift onto the Machine Frame

Parts needed for this procedure:

2	Reinforcing plate
4	Flange HD capscrew (3/8 x 1 inch)
4	Flange nut (3/8 inch)

Procedure

1. Remove any accessories mounted to the top of the frame in forward position; such as a 1/3 bed, power platform, or HD hitch frame extension tubes (Figure 14).

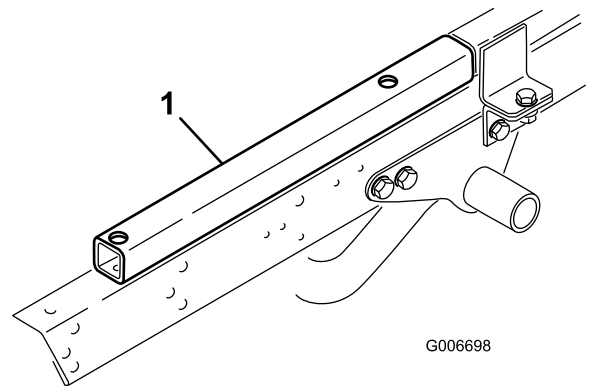


Figure 14

1. Hitch frame extension tube

2. Locate and remove the threaded insert from the mounting hole in the left and right frame channels as shown in Figure 15.

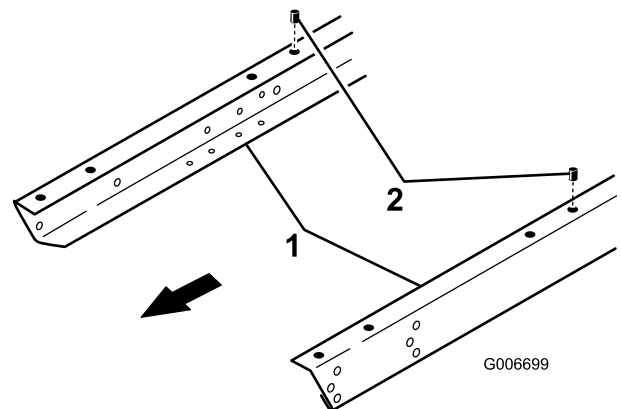


Figure 15

1. Frame channel
2. Threaded insert

Note: To prevent the lift scissor arms from expanding, pick up the platform lift from the bottom when positioning it on the frame.

3. Position the lift onto the frame, aligning the mounting holes with the holes in the frame (Figure 16).

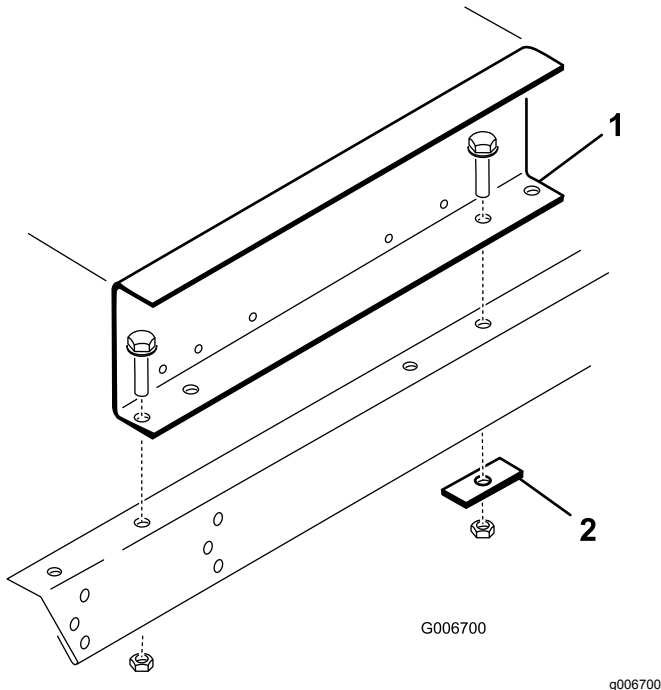


Figure 16

1. Lift
2. Reinforcing plate

4. Mount each side of the lift to the frame channels with a reinforcing plate and 2 cap screws (3/8-16 x 1 inch) and flange nuts (Figure 16).

Note: Use the reinforcing plates in rear mounting holes only.

Note: On HD, HDX, HDX-D, and HDX-Auto models, the frame is equipped with weld nuts so that the flange nuts are not required to secure the front of the lift to the frame channels.

9

Connecting the Wire Harness and Battery

Parts needed for this procedure:

1	Battery cable with boot
1	Negative battery cable

Procedure

1. Plug the connectors from the front and rear harness into the lift harness.
2. Locate the oil-pressure switch on the engine and unplug the wire connected to the switch.
3. Route the green wire from the front harness and connect it to the oil pressure switch.
4. Plug the wire previously removed from the oil pressure switch into the harness piggy back connector.
5. Connect the ground wire from the lift to the engine ground.
6. Remove the nut from the positive battery clamp (Figure 17).
7. Insert the positive wire from the lift and the ring terminal end of the red wire from the front harness onto the cable clamp screw and loosely secure it with the nut previously removed (Figure 17).

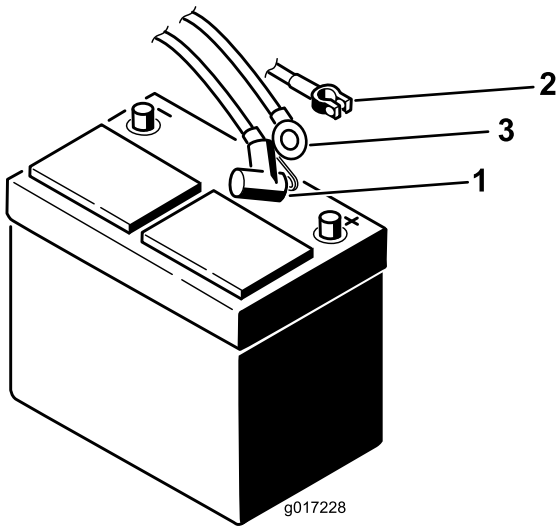


Figure 17

g017228

g017228

1. Positive lift wire
 2. Positive battery cable clamp
 3. Red wire from front harness
-
8. Ensure that the wire is clear of all hot or rotating parts.
 9. Secure the harness with cable ties.
 10. Install the positive battery cable to the battery.
 11. Slide the rubber boot over the positive terminal.
 12. Install the negative battery cable to the battery.

10

Mounting the Bubble Level Indicator

Parts needed for this procedure:

1	Bubble level indicator
---	------------------------

Procedure

Affix the bubble level indicator to the top of the console cover as shown in [Figure 18](#).

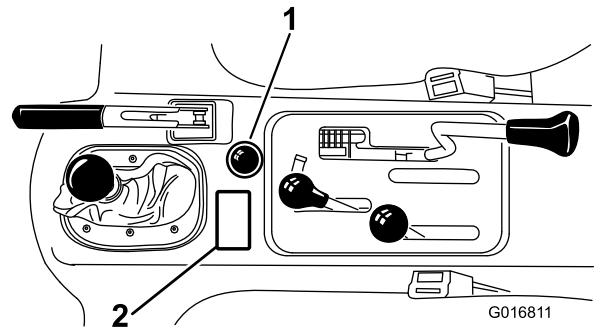


Figure 18

G016811

g016811

1. Bubble level indicator
2. Operation decal

11

Installing the Decals

Parts needed for this procedure:

1	Operation decal
2	No-step decal

For Workman 3000 and Workman 4000 Series Machines with Serial Numbers 240000001 and Up

1. Affix the operation decal to the top of the console cover as shown in [Figure 18](#).
2. Affix the no-step decal to the top of each fuel tank mounting strap as shown in [Figure 19](#).

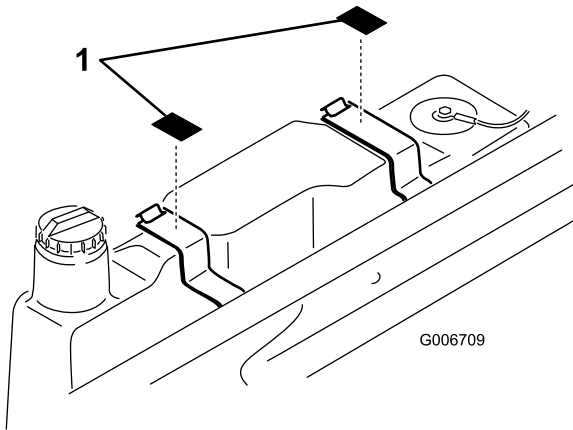


Figure 19

1. No-step decal

For Workman HD, HDX, HDX-D, and HDX-Auto Machines

1. Affix the operation decal to the top of the console cover as shown in [Figure 18](#).
2. Affix the no-step decals to the top of the radiator as shown in [Figure 20](#).

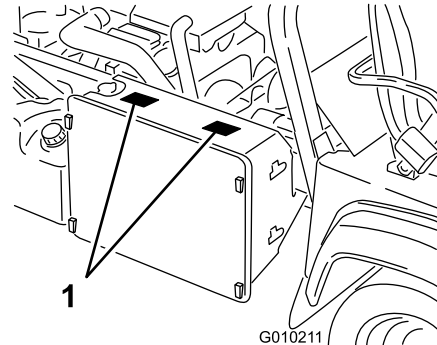


Figure 20

1. No-step decal

Product Overview

Controls

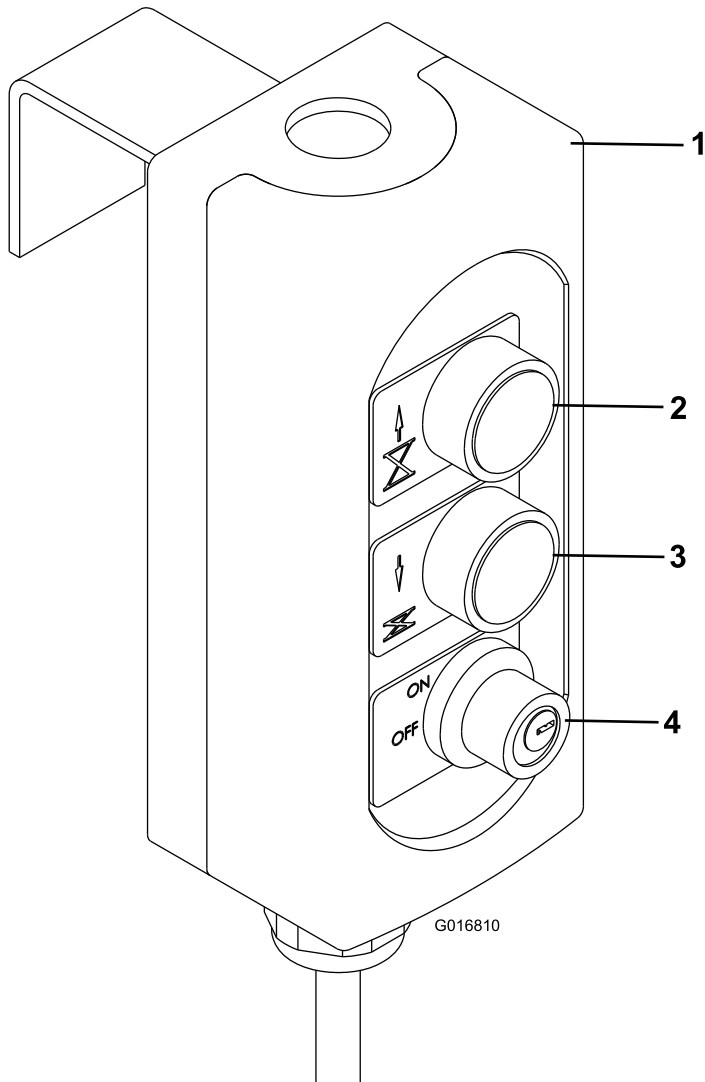


Figure 21

g016810

- 1. Pendant control
- 2. Up button
- 3. Down button
- 4. Key switch

Up Button

Press the Up button to raise the lift (Figure 21).

Down Button

Press the Down button to lower the lift (Figure 21).

Key Switch

Rotate the key switch to authorize the use of the lift. Remove the key from the lift pendant control switch to prevent operation of the lift whenever the machine is left unattended (Figure 21).

Emergency Lowering Valve Knob

Push the blue knob inward, rotate it 90 degrees counterclockwise, and pull it out to activate the emergency lowering valve (Figure 22).

Push the blue knob inward, rotate it 90 degrees clockwise, and pull it out to stop the lift and return it to normal operation.

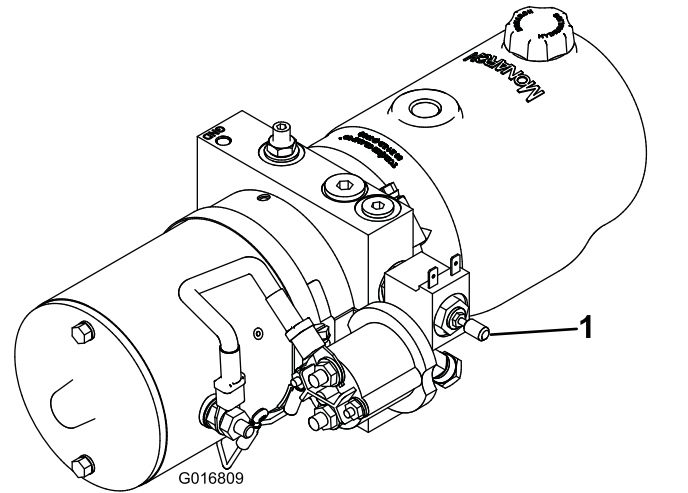


Figure 22

g016809

- 1. Emergency lowering valve knob (blue knob)

Operation

Checking the Oil Level

Capacity: 1.5 US qt

The lift reservoir is filled at the factory with 5W30 oil. Check the level before the lift is first operated and every 8 hours or daily, thereafter.

1. Position the machine on a level surface.
2. Raise the lift and engage the safety locks; refer to the [Engaging Safety Locks \(page 18\)](#).

Note: If you cannot raise the lift due to the lack of oil in the reservoir, raise it with a hoist and ensure that the safety locks are engaged to expose reservoir breather cap.

3. The oil level can be viewed through the reservoir. If the oil level is low, proceed to next step.
4. Clean the area around reservoir breather cap ([Figure 23](#)).

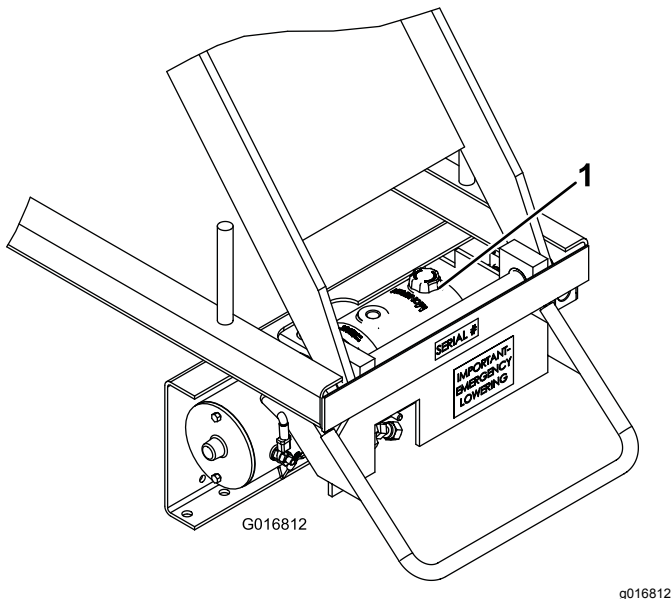


Figure 23

1. Reservoir cap
5. Unscrew the breather cap from the top of the reservoir.
6. If level is low, add enough oil to the proper level.

Note: Do not overfill.

Checking the Tire Pressure

Check the tire pressure every 8 hours or daily to ensure proper levels.

Refer to the machine *Operator's Manual* for tire inflation specification.

Engaging Safety Locks

1. Position the machine on a level surface.
2. Set the parking brake and chock the wheels.
3. Rotate the ignition key switch to the ON position with the engine off.
4. While standing next to machine, grasp the pendant control and rotate the lift key switch to the ON position.
5. Check the overhead clearance and for any obstructions.
6. Press the Up button to raise the lift high enough to engage the safety locks.

Important: Stand clear of scissor arms while platform is moving.

▲ DANGER

Contact with moving scissor arms can cause personal injury.

- Stand clear of the scissor arms while the platform is moving.
- Ensure that area is clear of bystanders before lowering the platform.
- Never work under a raised platform without the lift safety locks engaged.
- Always remove the key from the lift control box when the platform is not in use.

7. Rotate both of the safety locks, from their storage positions, until they rest inside the base frame, in the path of the scissors rollers ([Figure 24](#)).

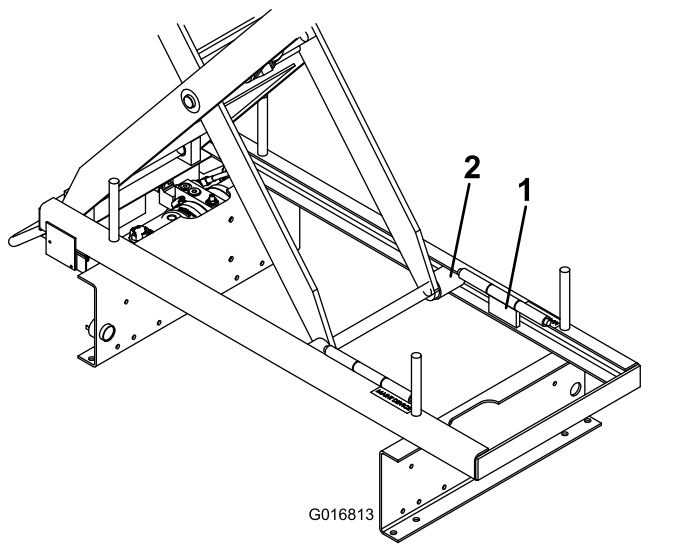


Figure 24

1. Safety lock (2) 2. Scissors roller (2)

⚠ DANGER

The platform lift can crush and cause personal injury.

- Never work under a raised platform without the lift safety locks engaged.
 - Never use safety blocks to support a load on the lift.
8. Press the Down button on the pendant control and lower the lift until the rollers gently contact the safety locks.
 9. Once the locks are fully engaged with the scissors rollers, continue to hold the Down button for 5 to 10 seconds to relieve the pressure within the hydraulic circuit.
 10. To remove safety locks, do the following:
 - Raise lift slightly.
 - Return safety locks to storage position.

Operating the Lift

The 1/3 platform lift is designed to be used only with a Workman machine and must be mounted with the wire harness, level, decals, switches, and all the interlock switches installed.

⚠ DANGER

Improper operation of the platform lift may cause serious personal injury or death. To reduce risk to you and bystanders, do the following:

- Read and understand all the safety instructions in the *Workman and Platform Lift Operator's Manuals* and warning labels.
- Never use the platform lift without proper training and authorization.

The electrical control system of the lift requires the machine to be parked on a slope of less than a 5-degree angle, parking brake engaged, and the machine key in the ON position with the engine shut off to activate the lift circuit.

Operating

1. Set the parking brake and chock the wheels.
2. Rotate the key switch to the ON position with the engine off.
3. Climb into the platform and secure the safety chains across the entry.
4. Grasp the pendant control and rotate the lift key switch to the ON position.
5. Press the Up button to raise the lift and the Down button to lower the lift (Figure 21).

Note: If the engine oil is cold, it may take several seconds for the engine oil pressure to bleed down after the engine is shut off. The lift does not operate until the oil pressure indicator light is on.

⚠ WARNING

Operating the platform lift without the parking brake engaged can result in a tip-over and personal injury.

- Always apply the parking brake before operating the platform lift. Use wheel chocks.
- Do not disengage the parking brake while the platform lift is raised.
- Do not raise the platform lift if the bubble is outside of the operating region on the level indicator.

⚠ DANGER

If you move the vehicle with the platform in the raised position, a loss of control or tip-over will result, causing possible serious personal injury to you or bystanders.

- Never move the machine while the platform is raised.
- Always apply the parking brake before raising the platform. Use wheel chocks.
- Never disengage the parking brake while the platform is raised.
- Check the safety interlocks before each use of the platform. See the machine *Operator's Manual* for the safety interlock check instructions.
- Never bypass the safety interlocks.
- Never allow riders on the platform in any position.

If the lift does not operate, do the following:

- Ensure that the ignition key and lift key are in the ON position.
 - Ensure that the machine is parked on less than a 5-degree angle slope.
 - Ensure that the parking brake is in the ON position.
 - Ensure that the engine is shut off and the oil pressure light is on.
6. Lower lift all the way down until it stops and remove the key from the lift pendant control.

Important: If the engine shuts off when releasing the parking brake, it may indicate that the lift is not completely lowered. The machine cannot be driven with the lift raised at any height.

⚠ DANGER

Contact between the non-insulated platform lift and power lines will cause electrocution, causing serious injury or death.

- Never use the platform lift near power lines.
- Never allow the platform lift to touch power lines.
- If power line contact occurs, do the following:
 - Lower the platform lift away from contact if possible.
 - Do not touch the power line.
 - Never touch the ground while touching the platform lift or power line.
- If operating the platform lift near electrical, high pressure, or any type of rotating equipment, do the following:
 - Always disconnect the power to that equipment.
 - Always use OSHA approved lockout devices.
- Never use the platform lift during a thunder or lightning storm.

Lower the platform lift and avoid open areas in the event of threatening weather.

Emergency Lowering

1. Push the blue knob inward, rotate it 90 degrees counterclockwise, and pull it out to activate the emergency lowering valve ([Figure 22](#)).

⚠ DANGER

Contact with moving scissor arms can cause personal injury.

- **Stand clear of the scissor arms while the platform is moving.**
 - **Make sure that the area is clear of bystanders before lowering the platform.**
 - **Never work under a raised platform without the lift safety blocks installed.**
 - **Always remove the key from the lift control box when the platform is not in use.**
2. To stop the lift and return it to normal operation, push the blue knob inward, rotate it 90 degrees clockwise and pull it out ([Figure 22](#)).

⚠ DANGER

Falling or jumping from the raised platform will cause personal injury.

- **Secure both of the handrail snap chains across the opening before raising the platform.**
- **Do not pull on objects while reaching from the raised platform.**
- **Never reach over the handrails unless both of your feet are on the platform deck.**
- **Never step above the level of platform deck or use ladders, step risers, or platform rails to extend the working height of the platform.**
- **If you must exit the raised platform, slowly and carefully climb down outside of the scissor-arm frame.**

Operating Tips

The electrical system, battery, and hydraulic lift cylinder are not designed for continuous use. Allow approximately 1-1/2 to 2 minutes between lift operations to maintain the operating temperature.

Frequent use without the engine running or idling, between lift use, may discharge the battery. If you cannot keep the battery charged by running the engine, charge the battery with an overnight battery charger.

Check the specific gravity of the fluid in the battery to ensure that it is fully charged. Refer to [Maintaining the Battery \(page 23\)](#).

Note: The top rail of the platform lift is higher than the machine ROPS, so be alert to low overhead areas when transporting the machine.

⚠ DANGER

Falling objects and overhead obstructions can cause personal injury.

- **Always wear a hard hat and eye protection while operating the platform or while in the area below the platform.**
- **Do not drop or throw articles from the raised platform.**
- **When raising the platform be alert for overhead obstructions which could cause eye, head, or crushing injuries.**

Maintenance

Checking the Safety Circuits

The electrical safety circuits of the lift require the machine to be parked on a slope of less than 5 degrees, the parking brake to be engaged, and the ignition key off to activate the lift circuit.

Testing the Parking-Brake Switch

1. Position the machine on a level surface, set the parking brake, and chock the wheels.
2. With the engine off, rotate the machine key switch to the ON position.
3. While standing next to the machine, grasp the pendant control and rotate the lift key switch to the ON position.
4. Press the Up button and raise the lift a few centimeters (inches) then release the button.
5. Release the parking brake and try to raise the lift again.

Note: The lift should not rise. If the lift does not raise, the safety circuit is operating correctly and you can proceed to next step. If the lift rises, there is a malfunction in the electrical circuit that must be repaired before operating lift.

6. With the platform partially raised and the parking brake released, start the engine.

Note: If engine does not start and remain running, the safety circuit is operating correctly. Lower the lift all the way and proceed to next step. If the engine starts and remains running there is a malfunction in the electrical circuit that must be repaired before operating lift.

Testing the Rear Axle-Level Switch

1. Position one side of machine so that the rear axle is on a slope greater than 5 degrees.

Note: The slope can be a floor jack, mound of material, or a small hill.

2. Engage the parking brake and chock the wheels.
3. With the engine off, rotate the ignition key switch to the ON position.
4. While standing next to the machine, grasp the pendant control, and rotate the lift key switch to the ON position.
5. Press the Up button and try to raise lift.

Note: If the lift does not raise, the safety circuit is operating correctly.

6. Raise the opposite side of the machine and repeat the procedure.

Note: If the lift rises, with either side of machine in raised position, there is a malfunction in the electrical circuit that must be repaired before operating lift; lower the lift immediately.

Maintaining the Battery

Service Interval: Every 50 hours

The battery electrolyte level must be properly maintained and the top of the battery kept clean. If the machine is stored in a location where temperatures are extremely high, the battery will run down more rapidly than if the machine is stored in a location where temperatures are cool.

- Keep the top of battery clean by washing periodically with a brush dipped in ammonia or bicarbonate of soda solution. Flush the top surface with water after cleaning. Do not remove the fill cap while cleaning.
- Battery cables must be tight on terminals to provide good electrical contact.
- If corrosion occurs at terminals, remove battery cover, disconnect cables, negative (-) cable first and scrape clamps and terminals separately. Connect the cables, positive (+) cable first and coat terminals with petroleum jelly.
- Check the electrolyte level every 50 operating hours or, if machine is in storage, every 30 days.
- Maintain cell level with distilled or demineralized water. Do not fill cells above the bottom of the fill ring inside each cell.
- If the machine will be stored for more than 30 days, remove the battery and charge it fully. Either store it on the shelf or on the machine. Leave the cables disconnected if stored on the machine. Store the battery in a cool atmosphere to avoid quick deterioration of the charge in the battery. To prevent the battery from freezing, ensure that it is fully charged. The specific gravity of a fully charged battery is 1.250.

⚠ DANGER

Battery electrolyte contains sulfuric acid, which is fatal if consumed and causes severe burns.

- **If you carelessly drink electrolyte you could die or if it gets onto your skin, you will be burned.**
- **Do not drink electrolyte and avoid contact with skin, eyes, or clothing.**
- **Wear safety glasses to shield your eyes and rubber gloves to protect your hands.**
- **Fill the battery where clean water is always available for flushing the skin.**
- **Follow all instructions and comply with all safety messages on the electrolyte container.**

WARNING

CALIFORNIA Proposition 65 Warning

Battery posts, terminals, and related accessories contain lead and lead compounds, chemicals known to the State of California to cause cancer and reproductive harm. Wash hands after handling.

⚠ WARNING

Charging the battery produces gasses that can explode.

Never smoke near the battery and keep sparks and flames away from battery.

⚠ WARNING

Battery terminals or metal tools could short against metal components causing sparks. Sparks can cause the battery gasses to explode, resulting in personal injury.

- **When removing or installing the battery, do not allow the battery terminals to touch any metal parts of the machine.**
- **Do not allow metal tools to short between the battery terminals and metal parts of the machine.**

⚠ WARNING

Incorrect battery cable routing could damage the machine and cables causing sparks. Sparks can cause the battery gasses to explode, resulting in personal injury.

- **Always disconnect the negative (black) battery cable before disconnecting the positive (red) cable.**
- **Always connect the positive (red) battery cable before connecting the negative (black) cable.**

Notes:

Notes:

Notes:

Declaration of Incorporation

The Toro Company, 8111 Lyndale Ave. South, Bloomington, MN, USA declares that the following unit(s) conform(s) to the directives listed, when installed in accordance with the accompanying instructions onto certain Toro models as indicated on the relevant Declarations of Conformity.

Model No.	Serial No.	Product Description	Invoice Description	General Description	Directive
07347	315000001 and Up	1/3 Area Platform Lift	1/3 VERTICAL LIFT	1/3 Vertical Lift	2006/42/EC, 2000/14/EC

Relevant technical documentation has been compiled as required per Part B of Annex VII of 2006/42/EC.

We will undertake to transmit, in response to requests by national authorities, relevant information on this partly completed machinery. The method of transmission shall be electronic transmittal.

This machinery shall not be put into service until incorporated into approved Toro models as indicated on the associated Declaration of Conformity and in accordance with all instructions, whereby it can be declared in conformity with all relevant Directives.

Certified:



John Heckel
Sr. Engineering Manager
8111 Lyndale Ave. South
Bloomington, MN 55420, USA
January 25, 2018

Authorized Representative:

Marcel Dutrieux
Manager European Product Integrity
Toro Europe NV
Nijverheidsstraat 5
2260 Oevel
Belgium

Tel. +32 16 386 659



The Toro Warranty

A Two-Year Limited Warranty

Conditions and Products Covered

The Toro Company and its affiliate, Toro Warranty Company, pursuant to an agreement between them, jointly warrant your Toro Commercial product ("Product") to be free from defects in materials or workmanship for two years or 1500 operational hours*, whichever occurs first. This warranty is applicable to all products with the exception of Aerators (refer to separate warranty statements for these products). Where a warrantable condition exists, we will repair the Product at no cost to you including diagnostics, labor, parts, and transportation. This warranty begins on the date the Product is delivered to the original retail purchaser.

* Product equipped with an hour meter.

Instructions for Obtaining Warranty Service

You are responsible for notifying the Commercial Products Distributor or Authorized Commercial Products Dealer from whom you purchased the Product as soon as you believe a warrantable condition exists. If you need help locating a Commercial Products Distributor or Authorized Dealer, or if you have questions regarding your warranty rights or responsibilities, you may contact us at:

Toro Commercial Products Service Department
Toro Warranty Company
8111 Lyndale Avenue South
Bloomington, MN 55420-1196
952-888-8801 or 800-952-2740
E-mail: commercial.warranty@toro.com

Owner Responsibilities

As the Product owner, you are responsible for required maintenance and adjustments stated in your *Operator's Manual*. Failure to perform required maintenance and adjustments can be grounds for disallowing a warranty claim.

Items and Conditions Not Covered

Not all product failures or malfunctions that occur during the warranty period are defects in materials or workmanship. This warranty does not cover the following:

- Product failures which result from the use of non-Toro replacement parts, or from installation and use of add-on, or modified non-Toro branded accessories and products. A separate warranty may be provided by the manufacturer of these items.
- Product failures which result from failure to perform recommended maintenance and/or adjustments. Failure to properly maintain your Toro product per the Recommended Maintenance listed in the *Operator's Manual* can result in claims for warranty being denied.
- Product failures which result from operating the Product in an abusive, negligent, or reckless manner.
- Parts subject to consumption through use unless found to be defective. Examples of parts which are consumed, or used up, during normal Product operation include, but are not limited to, brake pads and linings, clutch linings, blades, reels, rollers and bearings (sealed or greasable), bed knives, spark plugs, castor wheels and bearings, tires, filters, belts, and certain sprayer components such as diaphragms, nozzles, and check valves, etc.
- Failures caused by outside influence. Conditions considered to be outside influence include, but are not limited to, weather, storage practices, contamination, use of unapproved fuels, coolants, lubricants, additives, fertilizers, water, or chemicals, etc.
- Failure or performance issues due to the use of fuels (e.g. gasoline, diesel, or biodiesel) that do not conform to their respective industry standards.

Countries Other than the United States or Canada

Customers who have purchased Toro products exported from the United States or Canada should contact their Toro Distributor (Dealer) to obtain guarantee policies for your country, province, or state. If for any reason you are dissatisfied with your Distributor's service or have difficulty obtaining guarantee information, contact the Toro importer.

- Normal noise, vibration, wear and tear, and deterioration.
- Normal "wear and tear" includes, but is not limited to, damage to seats due to wear or abrasion, worn painted surfaces, scratched decals or windows, etc.

Parts

Parts scheduled for replacement as required maintenance are warranted for the period of time up to the scheduled replacement time for that part. Parts replaced under this warranty are covered for the duration of the original product warranty and become the property of Toro. Toro will make the final decision whether to repair any existing part or assembly or replace it. Toro may use remanufactured parts for warranty repairs.

Deep Cycle and Lithium-Ion Battery Warranty:

Deep cycle and Lithium-Ion batteries have a specified total number of kilowatt-hours they can deliver during their lifetime. Operating, recharging, and maintenance techniques can extend or reduce total battery life. As the batteries in this product are consumed, the amount of useful work between charging intervals will slowly decrease until the battery is completely worn out. Replacement of worn out batteries, due to normal consumption, is the responsibility of the product owner. Battery replacement may be required during the normal product warranty period at owner's expense. Note: (Lithium-Ion battery only): A Lithium-Ion battery has a part only prorated warranty beginning year 3 through year 5 based on the time in service and kilowatt hours used. Refer to the *Operator's Manual* for additional information.

Maintenance is at Owner's Expense

Engine tune-up, lubrication, cleaning and polishing, replacement of filters, coolant, and completing recommended maintenance are some of the normal services Toro products require that are at the owner's expense.

General Conditions

Repair by an Authorized Toro Distributor or Dealer is your sole remedy under this warranty.

Neither The Toro Company nor Toro Warranty Company is liable for indirect, incidental or consequential damages in connection with the use of the Toro Products covered by this warranty, including any cost or expense of providing substitute equipment or service during reasonable periods of malfunction or non-use pending completion of repairs under this warranty. Except for the Emissions warranty referenced below, if applicable, there is no other express warranty. All implied warranties of merchantability and fitness for use are limited to the duration of this express warranty.

Some states do not allow exclusions of incidental or consequential damages, or limitations on how long an implied warranty lasts, so the above exclusions and limitations may not apply to you. This warranty gives you specific legal rights, and you may also have other rights which vary from state to state.

Note regarding engine warranty:

The Emissions Control System on your Product may be covered by a separate warranty meeting requirements established by the U.S. Environmental Protection Agency (EPA) and/or the California Air Resources Board (CARB). The hour limitations set forth above do not apply to the Emissions Control System Warranty. Refer to the Engine Emission Control Warranty Statement supplied with your product or contained in the engine manufacturer's documentation for details.