



RECYCLER KIT

for 44" Side Discharge Mowers

MODEL NO. 59220

**INSTALLATION
INSTRUCTIONS**

Loose Parts

Note: Use the chart below to verify all parts have been shipped.

DESCRIPTION	QTY.	USE
Drive Pulley	1	Replace deck drive pulley and belt (Models 30144, 30147, and 30149 only)
Drive Belt	1	
Blades	3	Replaces side discharge blades.
Right Baffle	1	Mount baffles inside mower deck.
Left Baffle	1	
Bolt, 5/16"-18 x 1-1/4"	4	
Locknut, 5/16"-18	8	
Lock washer	4	
Kickers	3	Mount kickers inside mower deck.
Kicker Plate	1	
Bolt, 5/16"-18 x 1"	4	
Spacer	3	
Flat washer	4	
Locknut, 5/16"-18	4	

PROTOTYPE

Pre-Installation

1. Remove mower unit (see Operator's Manual for instructions).
2. Thoroughly clean mower deck. All debris must be removed to ensure kickers and baffle will fit properly against mower deck.
3. Repair all bent or damaged areas of mower deck and replace any missing parts.
4. Remove belt covers from mower deck.

Note: On models 30144, 30147, and 30149, replace drive pulley and drive belt. Torque pulley mounting nut to 100-120 ft-lb (135-163 Nm).

5. Tip mower deck upside down and block up ends to ease installation of recycler components.

Installing Blades

1. Remove blades and anti-scalp cups from spindles. Save for use when side discharging.
2. Install new recycler blades without anti-scalp cups.

IMPORTANT: The sail part of the blades (i.e., the turned up section) must face the inside of the mower.

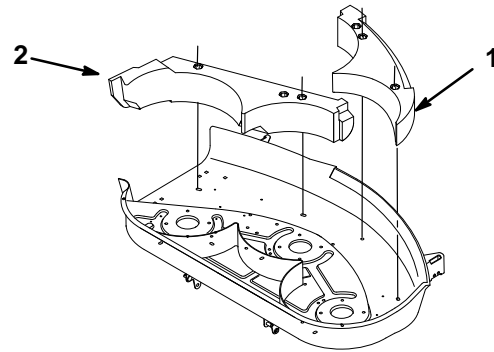
3. Tighten the blade mounting bolts to 85–110 ft-lb (115–150 Nm).

Installing Baffles

Prepare the Mower

On most models, the holes needed for installing the baffles are pre-drilled. Each hole is filled by a short bolt and nut. However, some older models do not have pre-drilled holes, and must be drilled before you can install the baffles.

To determine whether you need to drill or not, arrange the baffles in the mower as shown in Figure 1. If a hole with a small bolt in it corresponds to the holes in each baffle (Fig. 1), remove the short bolts and nuts, saving them for future use, then proceed to the next section.



m-3813

Figure 1

- 1 Left baffle 2 Right Baffle

If there are no holes in the mower, drill them as follows:

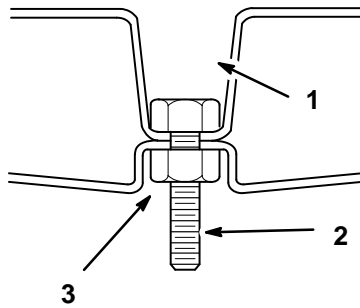
1. Place the left and right side baffles in the cutting chamber with the extended lugs on the baffles interlocked, then rotate the blades to ensure that there is at least 1/8" of clearance between the blades and the baffle.

Note: Some models may have hardware that interferes with the baffles. If interference occurs and you cannot solve it by repositioning the baffles, cut out the area of the baffles causing the interference.

2. Mark the location of the 4 baffle mounting holes.
3. Drill (4) 11/32" holes at the marked locations in the mower.

Install the Baffles

1. Place (4) 5/16"–18 x 1–1/4" bolts into the deep recessed holes in the left and right baffles. Secure the bolts with (4) 5/16" locknuts in the shallow recesses. Refer to Figures 2 and 3 for correct assembly and hole usage.

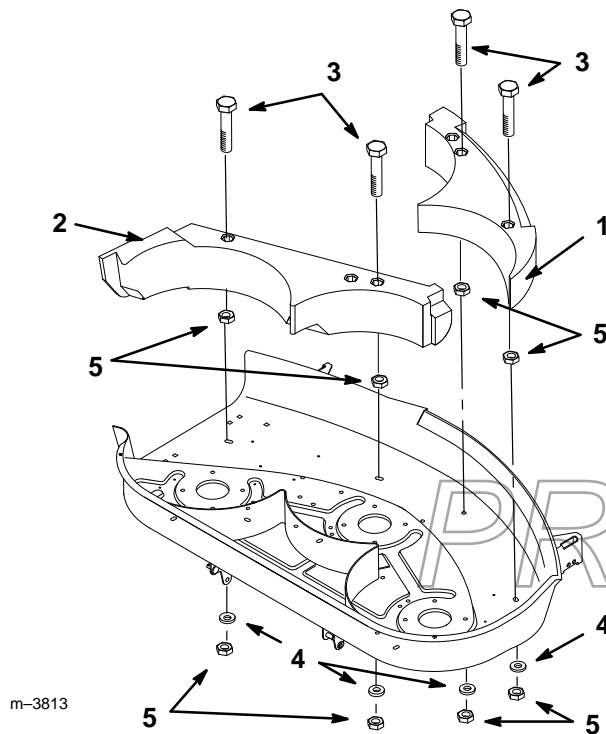


2033

Figure 2

- | | |
|----------------------------------|--------------------------|
| 1 Deep recess | 3 Lock nut 5/16" (7.9mm) |
| 2 Bolt 5/16-18 x 1-1/4" (31.8mm) | |

- Place the left side baffle and the right side baffle inside the cutting chamber so the extended lugs are interlocked. Secure them with (4) 5/16" locknuts and (4) lock washers (Fig. 3).



m-3813

Figure 3

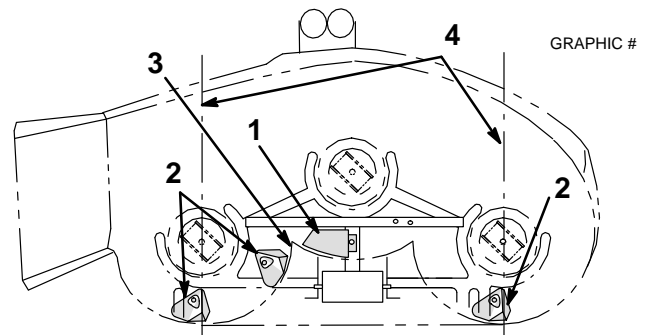
- | | |
|----------------------------------|--------------------------|
| 1 Baffle left side | 4 Lock washer |
| 2 Baffle right side | 5 Lock nut 5/16" (7.9mm) |
| 3 Bolt 5/16-18 x 1-1/4" (31.8mm) | |

- Tighten all mounting hardware securely.
- Rotate the blades to ensure that there is at least 1/8" clearance between the blades and baffles.

Installing Kickers

Prepare the Mower

If you had to drill holes to install the baffles, you will also need to drill holes for the kickers, as described in this section. If you did not have to drill holes, remove the short bolts from the holes where the kickers will go (Fig. 4) and proceed to the next section.



GRAPHIC #

Figure 4

- | | |
|----------------|---------------------|
| 1 Kicker plate | 3 Left/center joint |
| 2 Kicker | 4 Center line |

- Place kicker plate into center chamber so tab is in recessed area against rear baffle (Fig. 4).
- Place (2) kickers into deck on raised area, not in depressions, on center lines (Fig. 4).
- Place third kicker 1" from left/center joint of rear baffle (Fig. 4).
- Hold kickers and plate tight against rear baffle as shown and mark hole locations.
- Remove kickers and plate, drill (4) 11/32" holes in the mower.

Install the Kickers

1. Place the kicker plate into position (Fig. 4).
2. Secure the kicker plate with a 5/16"-18 x 1" bolt, flat washer, and locknut.
3. Position kickers (Fig. 4) and secure them with (3) 5/16"-18 x 1" bolts, spacers, flat washers, and locknuts (Fig. 5).

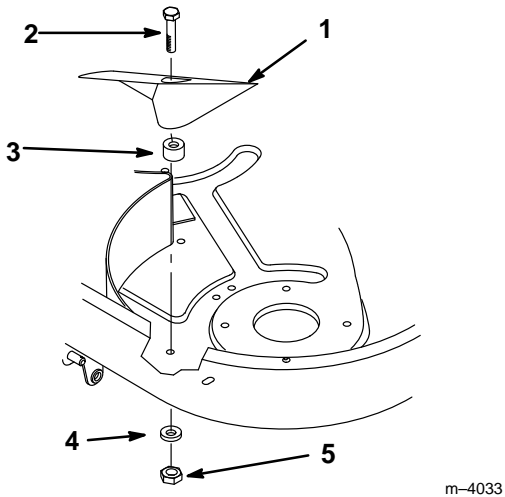


Figure 5

- | | |
|-----------------------|---------------------|
| 1 Kicker | 4 Flat washer |
| 2 Bolt, 5/16"-18 x 1" | 5 Locknut, 5/16"-18 |
| 3 Spacer | |

4. Tighten all mounting hardware securely.
5. Rotate the blades to ensure that there is at least 1/8" clearance between the blades and kickers.

Note: If a kicker interferes with a blade, reposition it further up into the mower.

6. Turn mower deck over and install belt covers.
7. Install mower deck onto traction unit (see Operator's Manual for instructions).

Recycling Tips

Selecting The Proper Height-Of-Cut Setting To Suit Conditions – Remove approximately one inch or no more than 1/3 of the grass blade when cutting. In exceptionally lush and dense grass you may have to raise the height-of-cut setting another notch or convert to side discharge or bagging operations.

Mowing In Extreme Conditions – Air is required to cut and recut grass clippings in mower housing, so do not set height-of-cut too low or totally surround housing by uncut grass. Always try to have one side of the mower housing free from uncut grass, allowing air to be drawn into housing. When making an initial cut thru center of uncut area, operate machine slower and back up if mower starts to clog.

Mow At Proper Intervals – Under most normal conditions you'll need to mow every 4–5 days. However, grass grows at different rates at different times. Thus, in order to maintain the same height-of-cut, which is a good practice, you'll need to cut more frequently in early spring; as the grass growth rate slows in mid summer, cut only every 8–10 days. If you are unable to mow for an extended period due to weather conditions or other reasons, convert to side discharge or bagging options or mow first with the height-of-cut at a high level; then mow again 2–3 days later with a lower height setting.

Note: To use the mower in side discharge mode, only the baffles must be removed. Mounting hardware must be installed in open holes. Kickers do not have to be removed.

Always Mow With Sharp Blades – A sharp blade cuts cleanly and without tearing or shredding the grass blade like a dull blade. Tearing and shredding causes the grass to turn brown at the edges which impairs growth and increases susceptibility to disease.

After Operating – To ensure optimum performance, clean underside of mower housing, especially around inserts (kickers) after each use. If residue is allowed to build up in mower housing and on inserts, cutting performance will decrease.

 **DANGER**

POTENTIAL HAZARD

- Open holes in the mower exposes you and others to thrown debris.

WHAT CAN HAPPEN

- Debris thrown out of holes in the mower can cause injury.

HOW TO AVOID THE HAZARD

- Never operate mower without hardware mounted in all holes in mower.
- Install hardware in mounting holes when recycle baffle is removed.

 **DANGER**

POTENTIAL HAZARD

- Without the grass deflector or entire grass catcher assembly mounted in place, you and others are exposed to blade contact and thrown debris.

WHAT CAN HAPPEN

- Contact with rotating mower blade(s) and thrown debris will cause injury or death.

HOW TO AVOID THE HAZARD

- NEVER operate mower without grass deflector or entire grass catcher in place.
- Never put your hands or feet under the mower.
- Never try to clear discharge area or mower blades unless you move the blade control (PTO) to “DISENGAGED” and rotate the ignition key to “OFF.” Also remove the key and pull the wire off the spark plug.

PROTOTYPE

PROTOTYPE

PROTOTYPE



PROTOTYPE