



PLENUM KIT for OFZ Grass Collector

MODEL NO. 99-0263

INSTALLATION ADDENDUM

Note: Replace page 2 of you Installation Instructions with the following page.

Hinge bracket	1	Install hinge bracket
Screw 10-24 x 1/2" (13 mm)	2	
Locknut 10-24	2	
Locking pin 3/8 x 6" (152 mm)	1	Install chute
Spring-short	1	
Parts Catalog	1	Save for ordering parts

Unit Preparation

Install Spring and Guard Brackets

- 1 Remove the existing spring and spring bracket from below the traction unit control plate (Fig. 1). Save the spring bracket for use on the chute. Discard spring-long.
- 2 Attach the new, long spring bracket below the traction unit control plate with the existing bolt in the front left hole, down from the top, and secure it with the existing locknut (Fig. 1). Hook the short chute spring into the bracket.
- 3 Remove the existing hardware from the left brake bracket below the traction unit control plate (Fig. 1).
- 4 Attach the guard, below the brake bracket, with a new 3/8-16 x 1-1/4" (32 mm) bolt in the front hole. Include the cable and secure with the existing washer and locknut above the control plate. Use the existing rear bolt and locknut (Fig. 1).

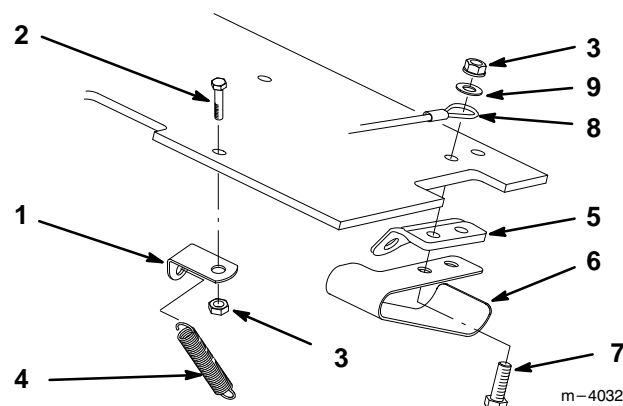


Figure 1

- | | |
|-----------------------|--------------------------------|
| 1 Spring bracket-long | 6 Guard bracket |
| 2 Existing bolt | 7 Bolt 3/8-16 x 1-1/4" (32 mm) |
| 3 Existing locknut | 8 Cable |
| 4 Spring-short | 9 Existing washer |
| 5 Brake bracket | |