



RECYCLER[®]

43cm Mower

Model No. 21012-8900001 & Up

Parts Catalog

LAWN-BOY®

Trademark

Product Name

Model No. – & Up

Parts Catalog

Product Name

Descriptive Information

Model No. – & Up

Parts Catalog

ORDERING REPLACEMENT PARTS

To order replacement parts, please supply: the part number, the quantity, and the description of each part desired.

Contents

Description	Page	Description	Page
HOUSING ASSEMBLY	1	GRASS BAG ASSEMBLY	6
ENGINE ASSEMBLY	2		
BLADE ASSEMBLY	3		
REAR AXLE ASSEMBLY	4		
HANDLE ASSEMBLY	5		

Part Description Abbreviations

Part descriptions in this catalog may include the following abbreviations.

Abbreviation	Meaning	Abbreviation	Meaning
AR	as required	HWHTF	hex washer head
ASM	assembly		thread forming
CARR	carriage	INC	incorporated
DEG	degrees	LH	left hand
FH	flat head	PH	pan head
GA	gauge	PPH	Phillips pan head
HF	hex flange	PTO	power take off
HFV	hex flange washer	RH	right hand
HH	hex head	SFH	slotted fillister head
HHF	hex head flange	SH	square head
HHST	hex head self tapping	SHWH	slotted hex washer head
HJ	hex jam	SPH	slotted pan head
HOC	height-of-cut	STD	standard
HS	hex socket	TAP	self tapping
HSBH	hex socket button head	TH	truss head
HSFH	hex socket flat head	TTH	Torx truss head
HSH	hex socket head	WH	wing head
HWH	hex washer head		

Important Format Explanations

This catalog uses special formats to convey information in illustrations and parts lists. Specifically, one format is used in conjunction with service assemblies and another with quantities associated with reference numbers.

Service Assemblies

Parts within service assemblies have reference numbers in the form X:Y. X is the reference number of the service assembly and Y is a sequential number unique to each part within the service assembly.

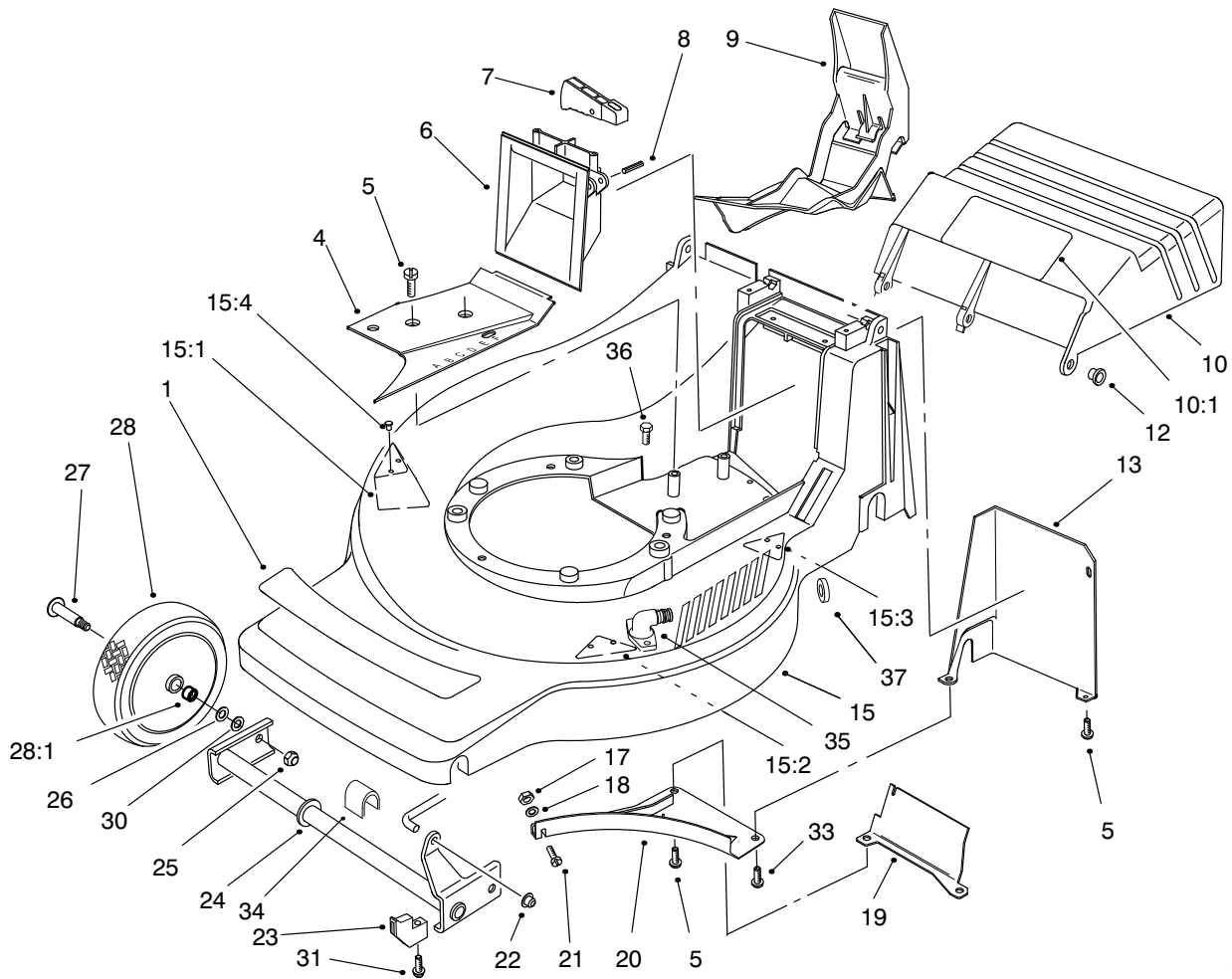
For example, a wheel assembly might be identified by reference number 6, the tire by 6:1, the valve by 6:2, and the wheel by 6:3. When you order the assembly identified by reference number 6, you receive all parts identified by reference numbers 6:1, 6:2, and 6:3. However, you may also order any part individually.

Reference numbers of this type appear in part lists and as callouts in illustrations.

Reference Numbers with Quantities

Illustrations may have a quantity in parentheses next to a reference number, in the form $X(Y)$. X is the reference number. Y in parentheses is the quantity of the part identified by the reference number.

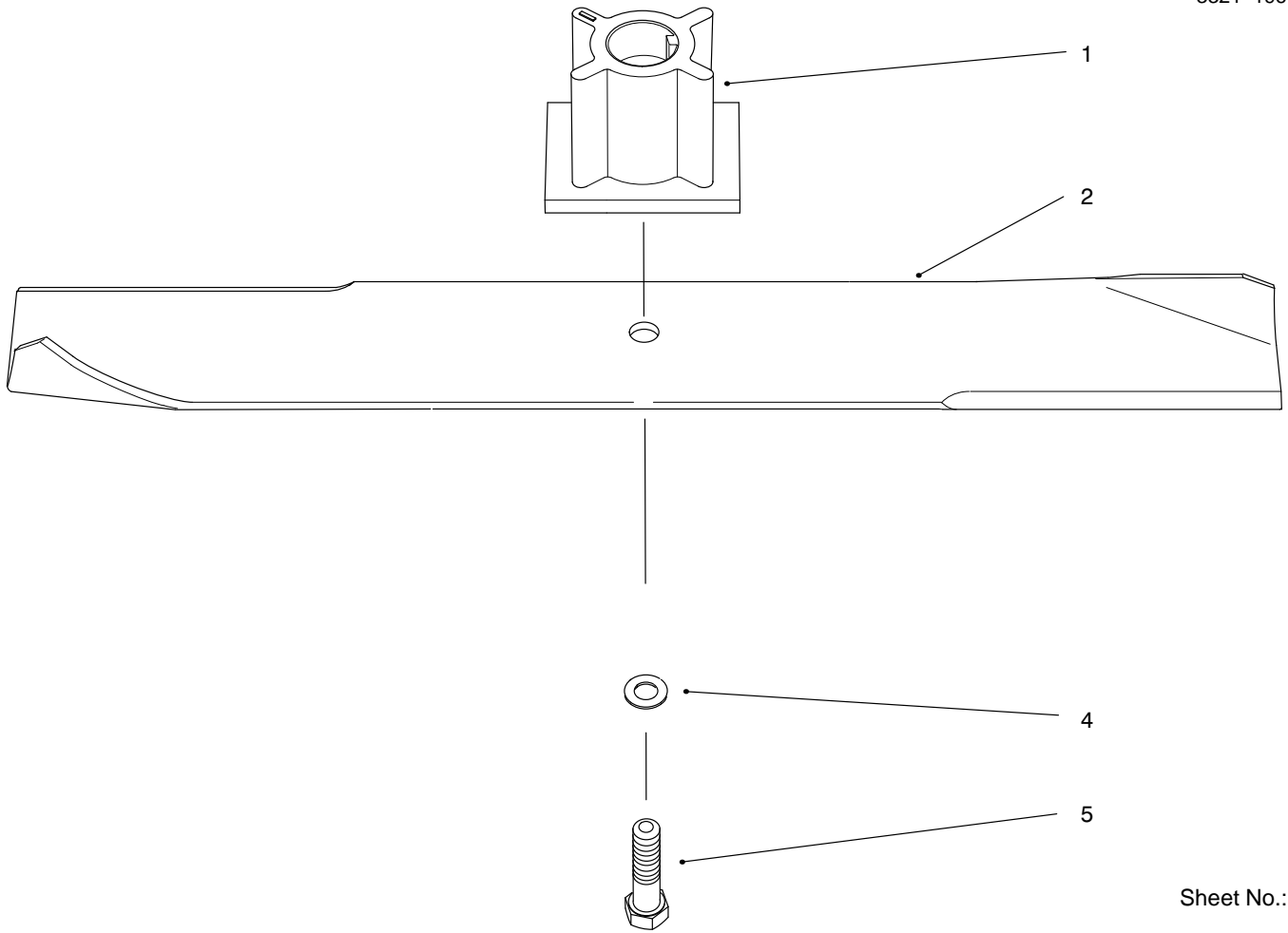
For example, the illustration callout 4 (2) indicates that two parts are used in that instance.



Sheet No.: 2

HOUSING ASSEMBLY

Ref. No.	Part No.	Qty.	Description	Ref. No.	Part No.	Qty.	Description
1	99-1709	1	Decal-Deck	27	99-1712	2	Bolt-Wheel
4	93-3782	1	Cover-Belt	28	93-4081	2	Wheel-Front
5	93-4095	4	Screw-Baffle	28:1	93-7024	4	Bushing
6	71-7870	1	Grip-Lower	30	99-1713	2	Washer-Wave
7	98-3236	1	Trigger-HOC	31	93-3793	2	Screw-Retainer
8	3284-5	1	Pin-Groove	33	94-1864	1	Screw-Baffle
9	93-3790	1	Plug	34	98-3222	2	Cap-Front Axle
10	99-1700	1	Door-Discharge	35	95-2747	1	Fitting-Washout
10:1	99-1708	1	Decal-Danger	36	46-6811	2	Screw HWH
12	93-3794	1	Bushing-Door	37	46-6290	1	O-Ring
13	98-1429	1	Cover-Shield				
15	99-2548	1	Housing-Deck				
15:1	93-3730	1	Kicker-Right Front				
15:2	93-3740	1	Kicker-Left Front				
15:3	93-3750	1	Kicker-Left Rear				
15:4	32144-111	6	Screw - PPH				
17	3296-2	1	Nut-Lock				
18	3256-21	1	Washer-Flat				
19	93-4110	1	Baffle				
20	93-3720	1	Baffle				
21	3250-13	1	Screw-PPH				
22	32112-11	1	Nut				
23	92-3216	2	ASM-Power Shaft				
24	93-4080	1	Axle-Front				
25	99-1711	2	Nut-Lock				
26	40-1940	2	Washer				

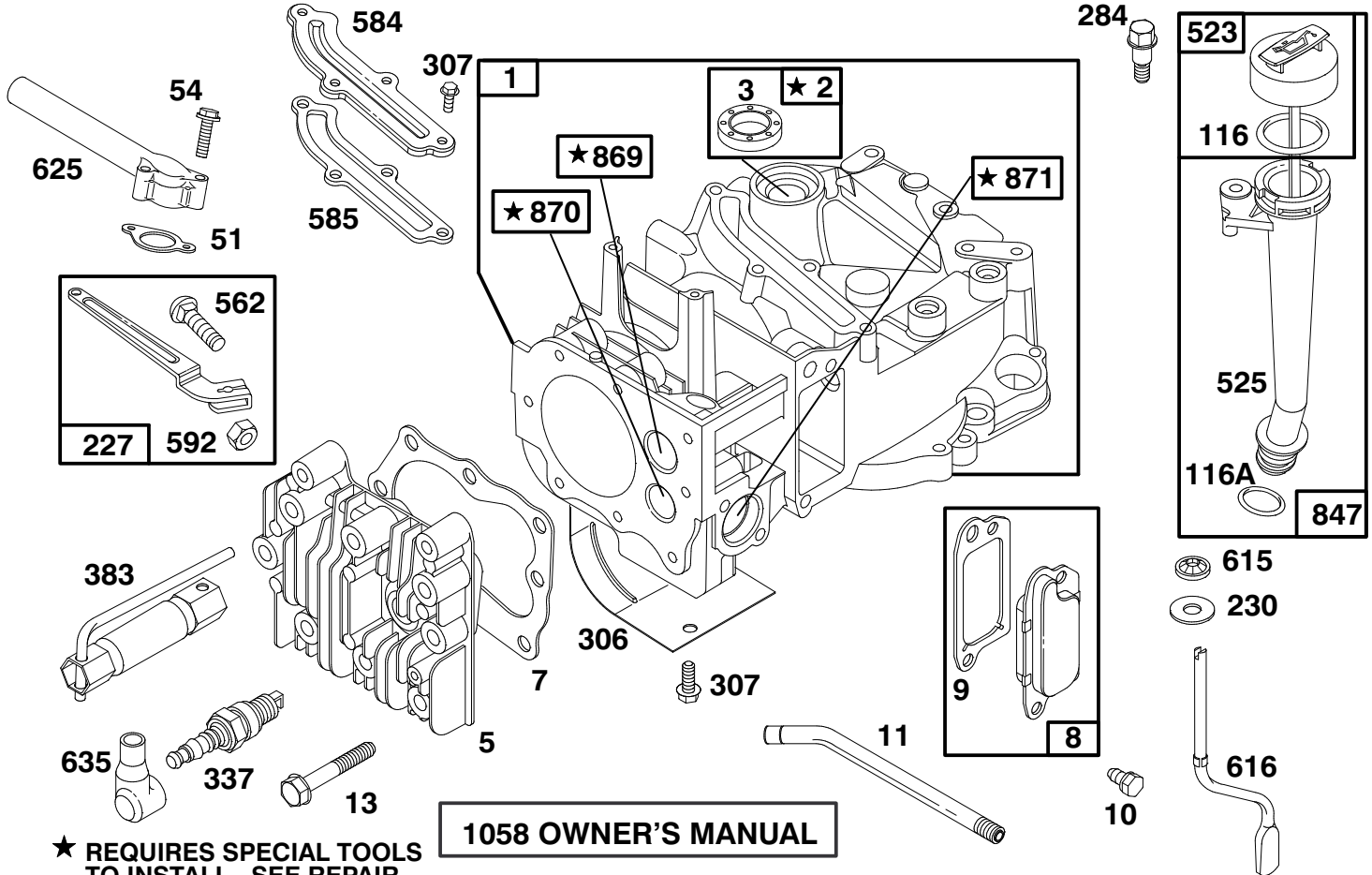


Sheet No.: 4

BLADE ASSEMBLY

Ref. No.	Part No.	Qty.	Description
1	93-4091	1	Retainer-Blade
2	98-1430	1	Blade-43cm
4	3253-22	1	Washer-Lock
5	26-0672	1	Bolt-Blade

Ref. No.	Part No.	Qty.	Description



★ REQUIRES SPECIAL TOOLS TO INSTALL. SEE REPAIR INSTRUCTION MANUAL.

Assemblies include all parts shown in frames.

T-0323

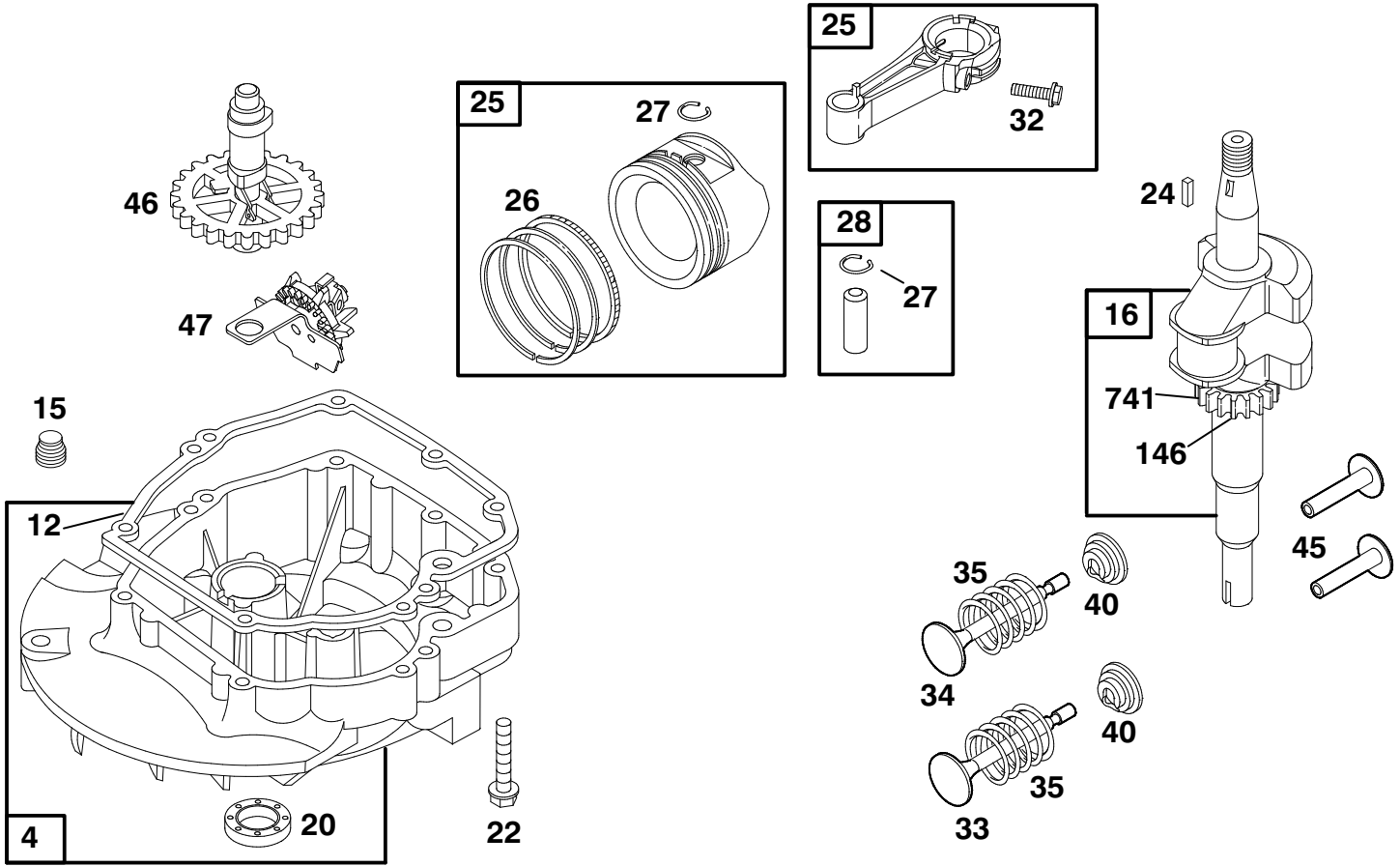
ENGINE BRIGGS & STRATTON MODEL 127802-1761 – E1

Ref. No.	Part No.	Description	No. Used
1	493260	Cylinder Assembly	1
★3	299819	Seal – Oil	1
5	214626	Head – Cylinder	1
★Ø7	272916	Gasket – Cylinder Head	1
8	495786	Breather – Valve Chamber	1
★Ø9	272481	Gasket – Breather	1
10	94650	Screw – Breather Mtg.	1
11	231933	Tube – Breather	1
13	94547	Screw – Cylinder Head	1
★51	272199	Gasket – Intake Elbow	1
54	94526	Screw – Intake Elbow Mtg.	1
★116	280393	Seal – O Ring	1
★116A	280966	Seal – O Ring	1
227	492349	Lever Assembly – Gov.	1
230	67072	Washer – Gov. Crank	1
284	94511	Screw – Hex. Head	1
306	224324	Shield – Cylinder	1
307	94515	Screw – Hex. Head	1
337	802592	Plug – Spark	1

Ref. No.	Part No.	Description	No. Used
383	89838	Wrench – Spark Plug	1
523	495264	Cap With Dipstick – Oil Filler	1
525	495265	Tube – Oil Filler	1
562	94852	Bolt – Carriage	1
584	224328	Baffle – Cylinder	1
★585	272238	Gasket – Baffle Plate	1
592	231082	Nut – Hex.	1
615	94474	Fastener	1
616	263175	Crank – Governor	1
625	497465	Tube – Fuel Intake	1
635	66538	Elbow – Spark Plug	1
847	495263	Oil Fill Tube Assy.	1
869	213512	Seat – Intake Valve	1
870	213513	Seat – Exhaust Valve	1
871	262001	Guide – Exhaust Valve	1
		Note: 63709 Guide – Intake Valve	1
1058	273693	Owner's Manual	1

★ Included in Gasket Set – Part No. 497316.

Ø Included in Valve Overhaul Gasket Set – Part No. 498528.



Assemblies include all parts shown in frames.

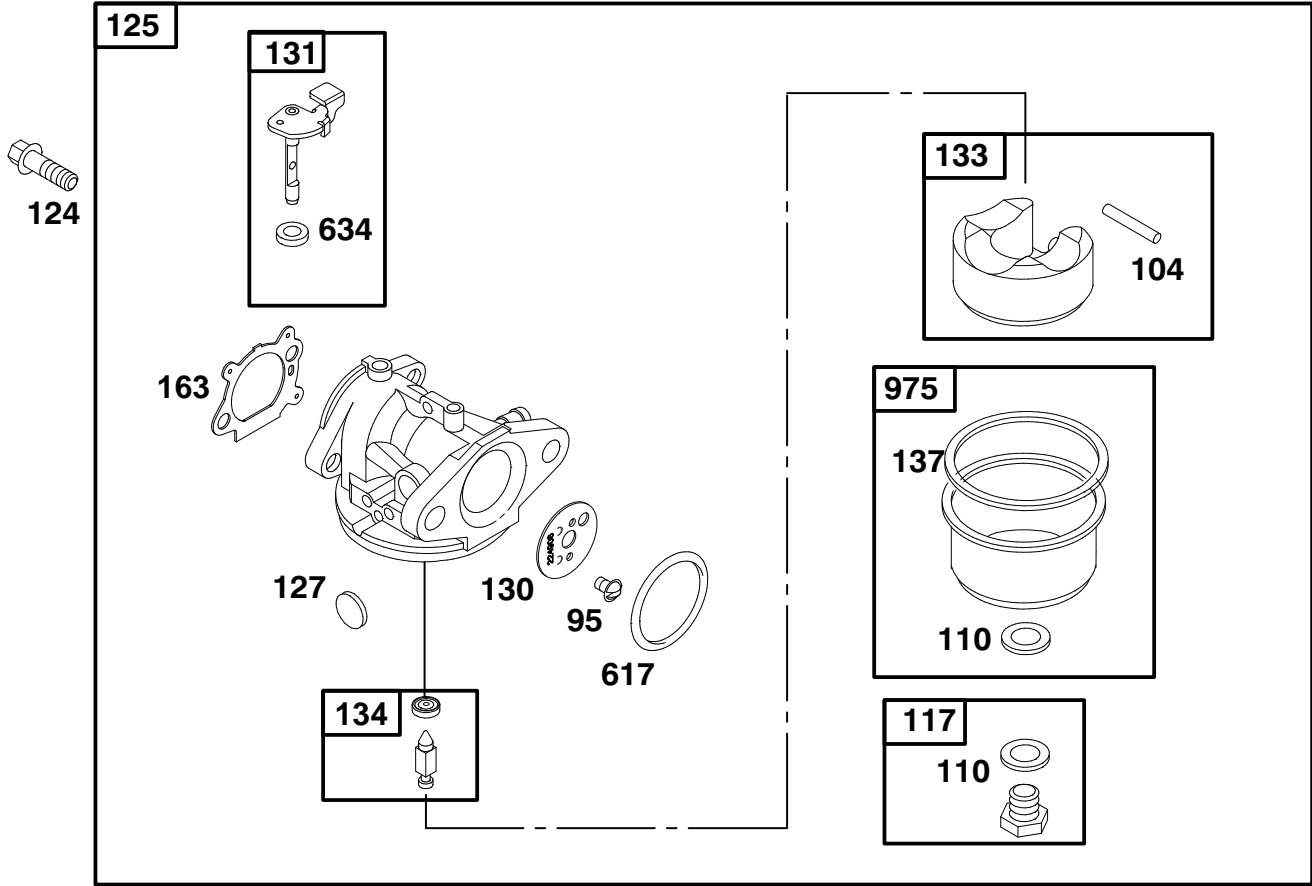
T-0323

ENGINE BRIGGS & STRATTON MODEL 127802-1761-E1

Ref. No.	Part No.	Description	No. Used
4	493279	Sump – Engine	1
★12	272198	Gasket – Crankcase	1
15	94880	Plug – Oil Drain	1
16	499147	Crankshaft	1
★20	399781	Seal – Oil	1
22	94220	Screw – Hex.	
		Note: 94612 Screw – Hex. (One Used in Hole Nearest Breather)	1
24	222698	Key – Flywheel	1
25	499429	Piston Assy. (Standard)	1
	499430	Piston Assy (0.010" O.S.)	1
	499431	Piston Assy. (0.020" O.S.)	1
	499432	Piston Assy. (0.030" O.S.)	1
26	499425	Ring Set (Standard)	1

Ref. No.	Part No.	Description	No. Used
	499426	Ring Set (0.010" O.S.)	1
	499427	Ring Set (0.020" O.S.)	1
	499428	Ring Set (0.030" O.S.)	1
27	263190	Lock – Piston Pin	1
28	499423	Pin – Piston (Standard)	1
29	499424	Rod Assembly – Connecting	1
32	94699	Screw – Connecting Rod	1
33	262651	Valve – Exhaust	1
34	262652	Valve – Intake	1
35	262224	Spring – Valve	1
40	93312	Retainer – Valve Spring	1
45	262204	Tappet – Valve	1
46	498275	Gear – Cam	1
47	493737	Slinger – Oil	1
146	94388	Key – Timing	1
741	262598	Gear – Timing	1

★ Included in Gasket Set—Part No. 497316.



Assemblies include all parts shown in frames.

T-0323

ENGINE BRIGGS & STRATTON MODEL 127802-1761-E1

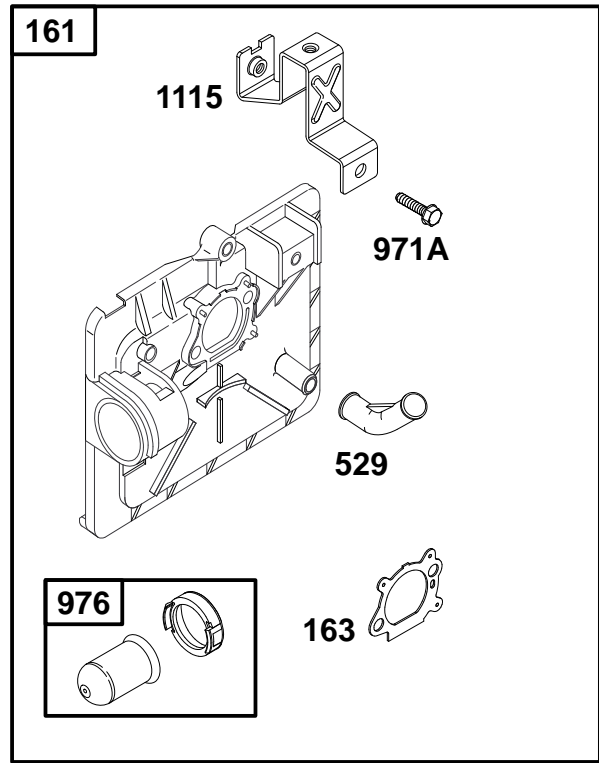
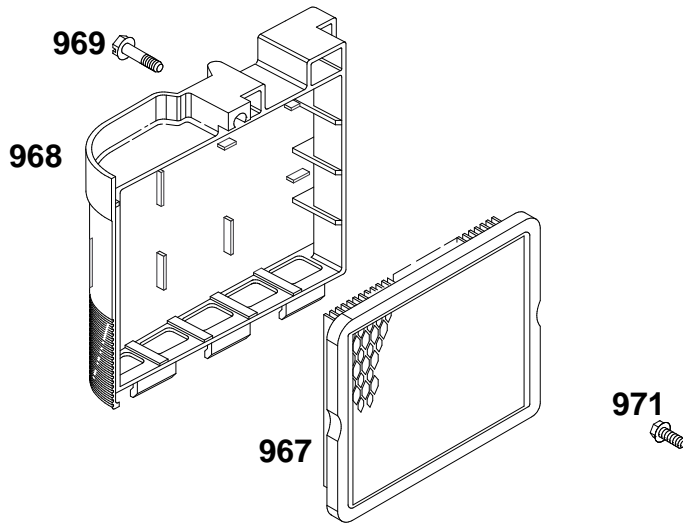
Ref. No.	Part No.	Description	No. Used
95	94098	Screw – Throttle Valve Mtg.	1
●104	231371	Pin – Float Hinge	1
●◆110		Gasket–Sealing (Sold in Kit Only)	1
117	498975	Screw – Bowl Mtg. (Std.) Note: 496495 Screw – Bowl Mtg. (High Altitude)	1
124	94525	Screw – Carburetor Mtg.	1
125	498966	Carburetor	1
●127		Plug – Welch (Sold in Kit Only)	1

Ref. No.	Part No.	Description	No. Used
130	224908	Valve – Throttle	1
131	493267	Shaft – Throttle	1
133	398187	Float Assy. – Carburetor	1
●134	398188	Kit – Needle/Seat	1
●◆137		Gasket – Bowl (Sold in Kit Only)	1
★◆163	272653	Gasket – Air Cleaner	1
●◆617	270344	Seal – Fuel Intake Tube	1
●◆634		Washer – Shaft (Sold in Kit Only)	1
975	493640	Bowl Assy. – Carburetor	1

★ Included in Gasket Set–Part No. 497316.

● Included in Carburetor Kit–Part No. 498260.

◆ Included in Carburetor Gasket Set–Part No. 498261.



Assemblies include all parts shown in frames.

T-0323

ENGINE BRIGGS & STRATTON MODEL 127802-1761-E1

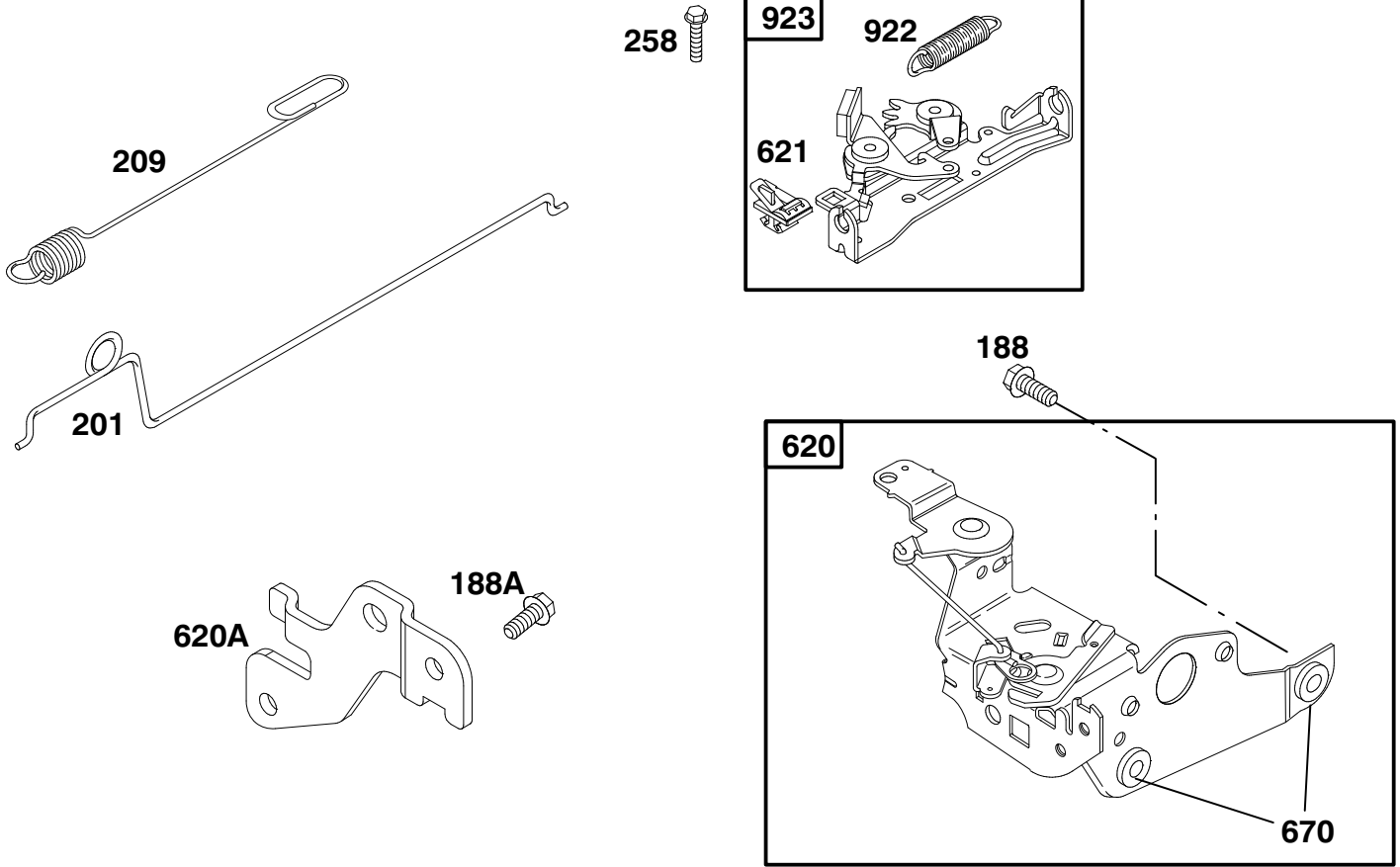
Ref. No.	Part No.	Description	No. Used
161	496116	Base – Air Cleaner	1
◆★163	272653	Gasket – Air Cleaner	1
529	281299	Grommet	1
967	491588	Filter – Air	1
968	281340	Cover – Air Cleaner	1

Ref. No.	Part No.	Description	No. Used
969	94872	Screw – Slotted Hex.	1
971	94873	Screw – Hex.	1
971A	94749	Screw – Hex.	1
976	496115	Primer – Carburetor	1
1115	224815	Bracket – Support	1

★ Included in Gasket Set—Part No. 497316.

● Included in Carburetor Kit—Part No. 498260.

◆ Included in Carburetor Gasket Set—Part No. 498261.



Assemblies include all parts shown in frames.

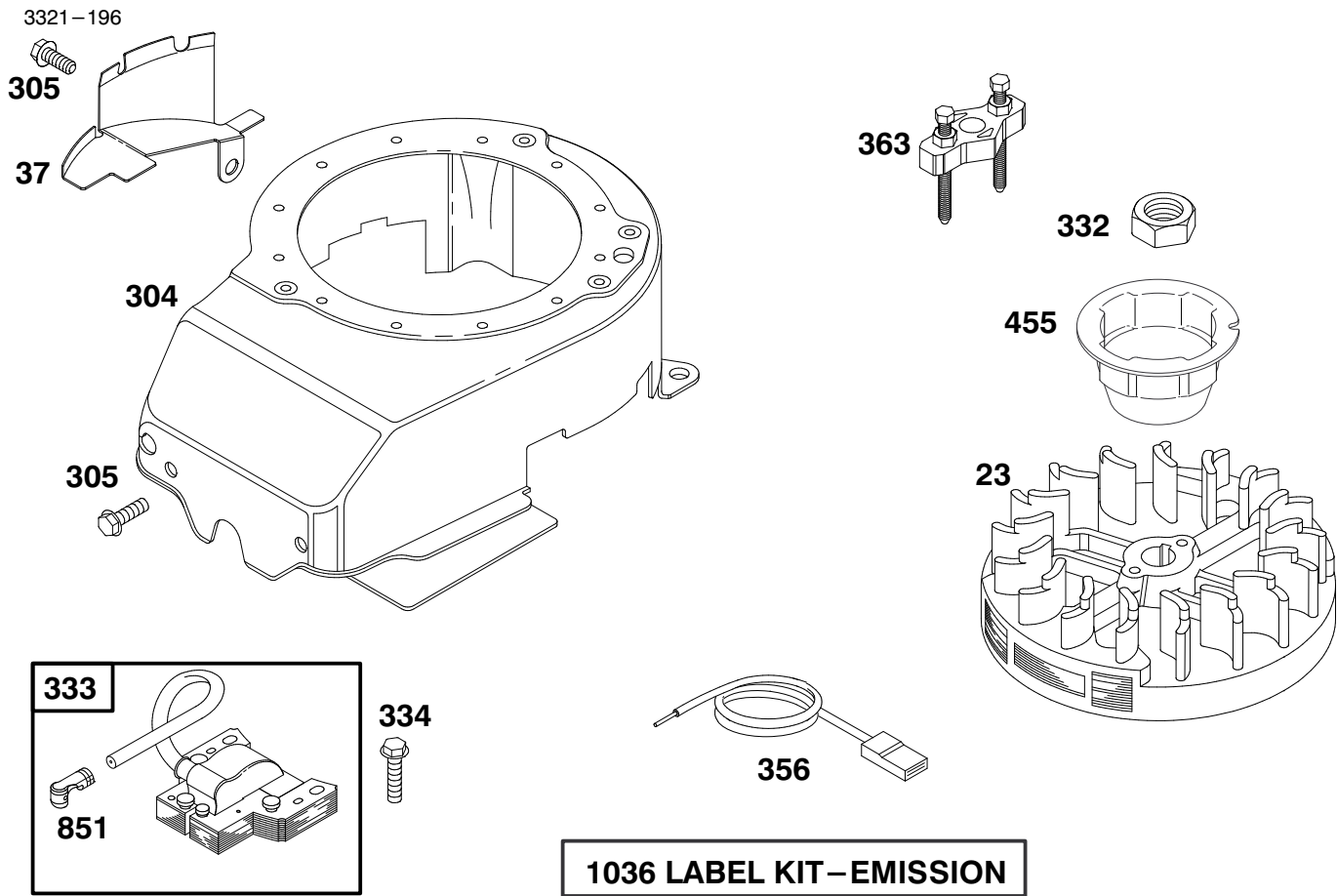
T-0323

ENGINE BRIGGS & STRATTON MODEL 127802-1761-E1

Ref. No.	Part No.	Description	No. Used
188	94644	Screw - Hex.	1
188A	94874	Screw - Hex.	1
201	262579	Link - Governor	1
209	263044	Spring - Governor	1
258	94512	Screw - Hex.	1
620	497837	Bracket - Carburetor	1

Ref. No.	Part No.	Description	No. Used
620A	225152	Bracket - Control	1
621	396847	Switch - Stop	1
★670	493823	Spacer - Bracket	2
922	262640	Spring - Brake	1
923	493442	Brake Assembly	1

★ Included in Gasket Set - Part No. 497316.



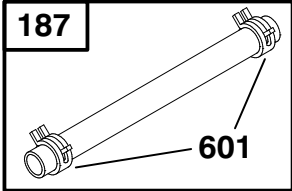
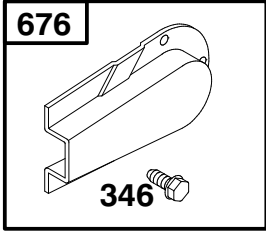
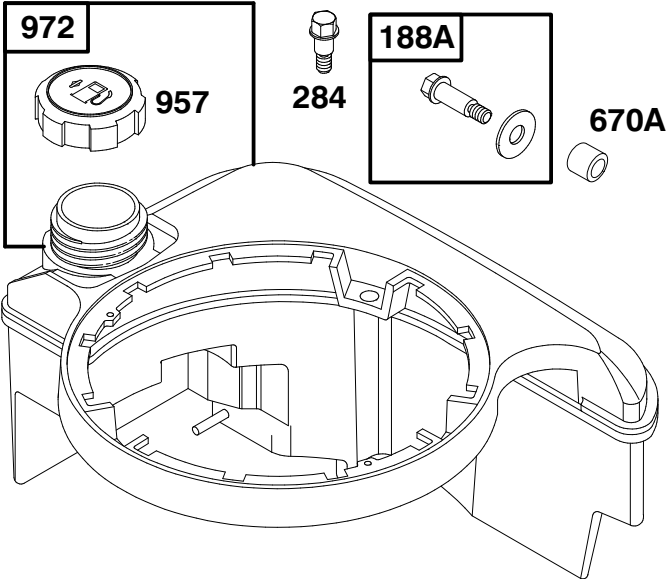
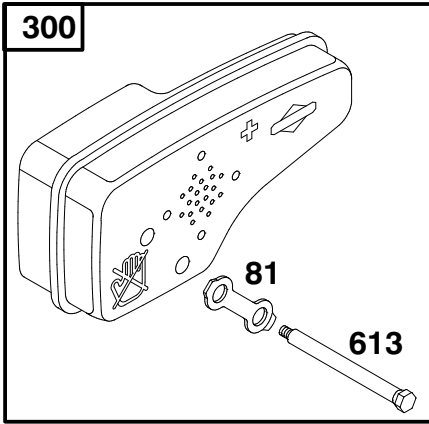
Assemblies include all parts shown in frames.

T-0323

ENGINE BRIGGS & STRATTON MODEL 127802-1761-E1

Ref. No.	Part No.	Description	No. Used
23	492177	Flywheel	1
37	224511	Guard - Flywheel	1
304	493293	Housing - Blower	1
305	94744	Screw - Hex.	1
332	92284	Nut - Flywheel	1
333	802574	Armature - Magneto	1

Ref. No.	Part No.	Description	No. Used
334	94731	Screw - Hex.	1
356	497833	Wire - Ground	1
363	19069	Flywheel Puller	1
455	225121	Cup - Starter	1
851	493880	Terminal - Ignition Cable	1
1036	499341	Label Kit - Emission	1



Assemblies include all parts shown in frames.

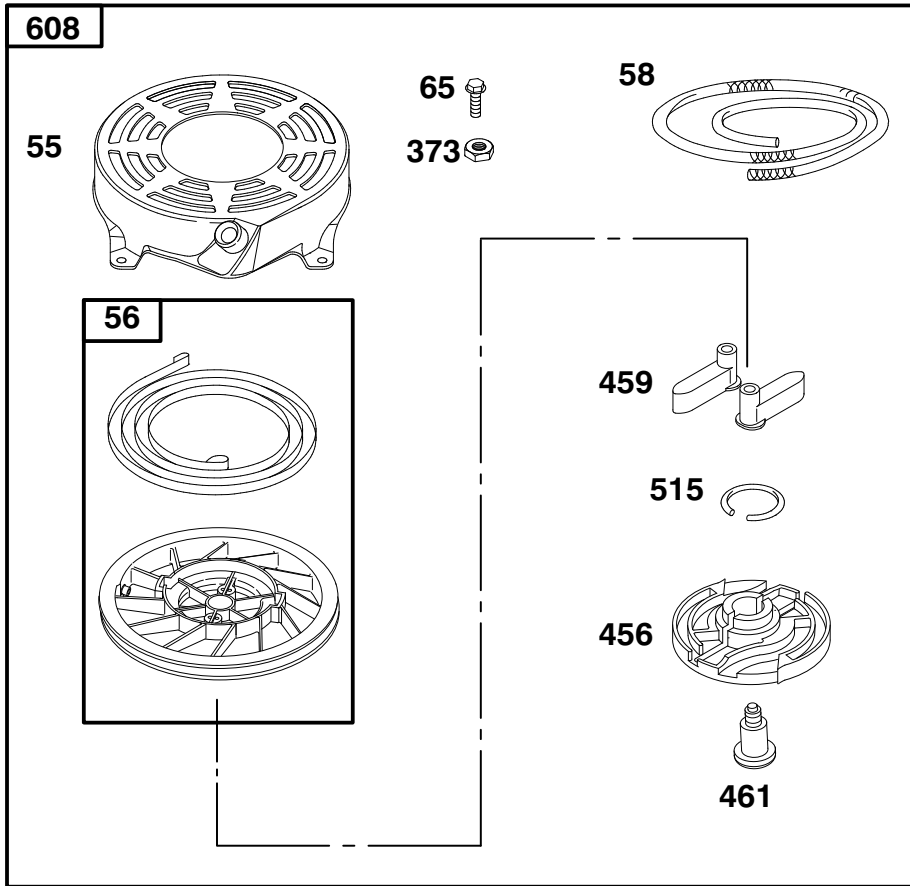
T-0323

ENGINE BRIGGS & STRATTON MODEL 127802-1761-E1

Ref. No.	Part No.	Description	No. Used
81	223664	Lock – Muffler Screw	1
187	298049	Hose – Fuel (Cut to Required Length).	1
188A	398540	Screw – Shoulder	1
284	94511	Screw – Shoulder	1
300	496106	Muffler – Exhaust	1
346	94896	Screw – Hex.	1

Ref. No.	Part No.	Description	No. Used
601	95162	Clamp – Hose	1
613	94231	Screw – Shoulder	1
670A	280512	Spacer – Fuel Tank	1
676	493871	Deflector – Muffler	1
957	397974	Cap – Fuel Tank	1
972	495224	Tank Assembly – Fuel	1

★ Included in Gasket Set – Part No. 497316.

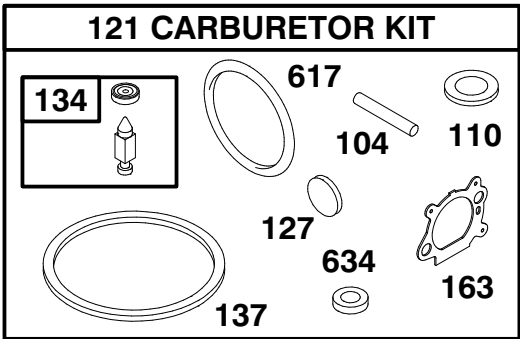
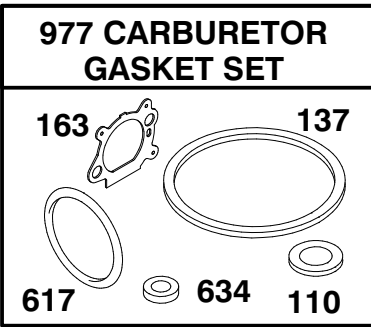
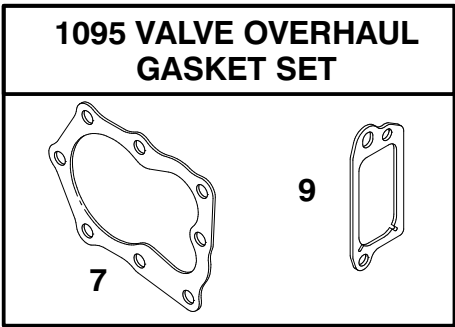
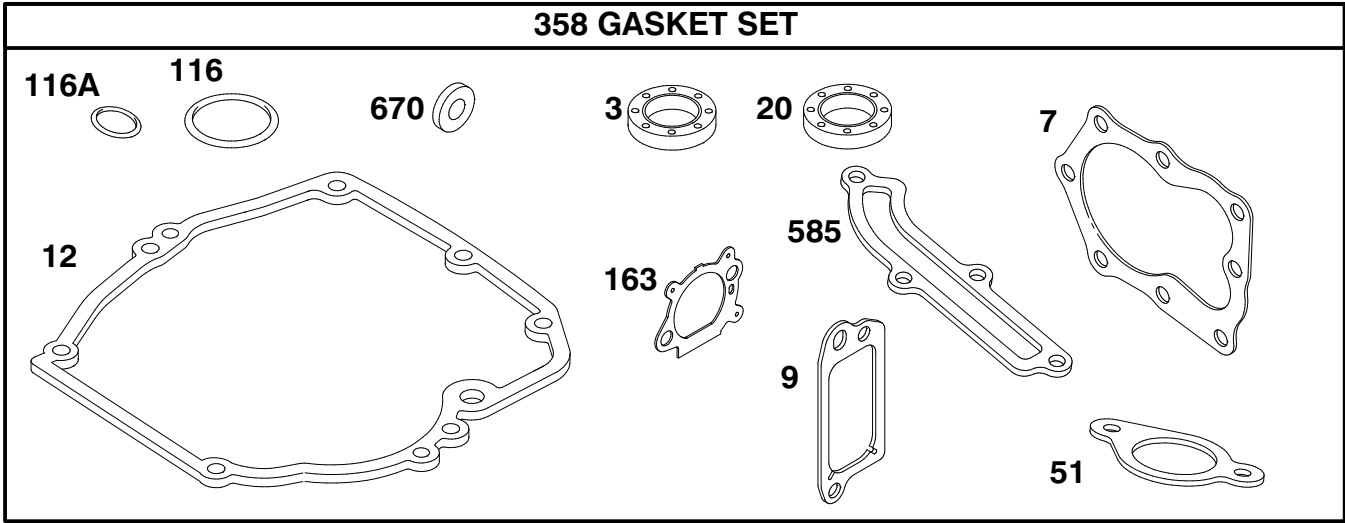


Assemblies include all parts shown in frames.

ENGINE BRIGGS & STRATTON MODEL 127802-1761-E1

Ref. No.	Part No.	Description	No. Used
55	497440	Housing – Rewind Starter	1
56	498144	Pulley – Rewind Starter	1
58	280399	Rope – Rewind Starter (Cut to Required Length)	1
59	T224467	Insert – Starter Grip	1
60	T494212	Handle – Rewind Starter	1
65	94904	Screw – Hex.	1

Ref. No.	Part No.	Description	No. Used
373	94908	Nut – Hex.	1
456	281503	Retainer – Rewind Starter	1
459	281505	Pawl – Starter	1
461	94943	Pin – Starter	1
515	263073	Spring – Torsion	1
608	497680	Starter Assy. – Rewind	1



Assemblies include all parts shown in frames.

T-0323

ENGINE BRIGGS & STRATTON MODEL 127802-1761-E1

Ref. No.	Part No.	Description	No. Used
★3	299819	Seal – Oil	1
★Ø7	272916	Gasket – Cylinder Hd.	1
★Ø9	272481	Gasket – Breather	1
★12	272198	Gasket – Crankcase	1
★20	399781	Seal – Oil	1
★51	272199	Gasket – Intake Elbow	1
●104	231371	Pin – Float Hinge	1
●◆110		Gasket – Sealing (Sold in Kit Only)	1
★116	280393	Seal – O Ring	1
★116A	280966	Seal – O Ring	1
121	498260	Carburetor Kit	1
●127		Plug – Welch (Sold in Kit Only)	1

Ref. No.	Part No.	Description	No. Used
●134	398188	Kit – Needle/Seat	1
●◆137		Gasket – Bowl (Sold in Kit Only)	1
★◆163	272653	Gasket – Air Cleaner	1
358	497316	Gasket Set	1
★585	272238	Gasket – Baffle Plate	1
●◆617	270344	Seal – Fuel Intake Tube	1
●◆634		Washer – Shaft (Sold in Kit Only)	1
★670	493823	Spacer – Bracket	2
977	498261	Gasket Set – Carburetor	1
1095	498528	Gasket Set – Valve Overhaul	1

★ Included in Gasket Set – Part No. 497316.
 Ø Included in Valve Overhaul Gasket Set – Part No. 498528.

● Included in Carburetor Kit – Part No. 498260.
 ◆ Included in Carburetor Gasket Set – Part No. 498261.

Toro Part Number Index

Part No.	Page No.	Ref. No.	Qty.	Description
19-4050	5	1	2	Knob
26-0672	3	5	1	Bolt-Blade
40-1940	1	26	2	Washer
46-6290	1	37	1	O-Ring
46-6811	1	36	2	Screw HWH
71-7740	4	10	1	Spring
71-7860	5	5	1	Grip-Upper
71-7870	1	6	1	Grip-Lower
71-7980	4	14	1	Indicator-HOC
71-8450	4	11	1	Cover-Spring
82-8550	2	7	1	Shield-Muffler
92-2289	2	12	1	Plate-Logo
92-3216	1	23	2	ASM-Power Shaft
93-0243	2	4	1	Shroud
93-1118	5	9	1	Control-Throttle
93-3720	1	20	1	Baffle
93-3730	1	2	1	Kicker-Right Front
93-3740	1	16	1	Kicker-Left Front
93-3750	1	14	1	Kicker-Left Rear
93-3782	1	4	1	Cover-Belt
93-3790	1	9	1	Plug
93-3793	1	31	2	Screw-Retainer
93-3793	4	15	2	Screw-Retainer
93-3794	1	12	1	Bushing-Door
93-4056	5	22	2	Cap-Bolt
93-4057	5	4	1	Spring-Door
93-4058	5	3	1	Bolt-Long
93-4060	5	20	1	Bolt-Short
93-4062	4	2	1	Spring-Trigger Return
93-4065	4	13	1	Rod-Link
93-4066	4	3	1	Saddle-HOC
93-4079	4	5	1	Axle-Rear
93-4080	1	24	1	Axle-Front
93-4081	1	28	2	Wheel-Front
93-4084	5	18	2	Retainer-Cable
93-4085	6	2	1	Frame-Bag
93-4086	6	3	1	Bag-grass
93-4087	6	1	1	Grass Bag-Remover
93-4091	3	1	1	Retainer-Blade
93-4094	5	21	2	Screw-Cap Hinge
93-4095	1	5	4	Screw-Baffle
93-4095	4	4	2	Screw-Baffle
93-4097	4	8	2	Washer-Wheel
93-4098	4	7	2	Nut-Wheel
93-4110	1	19	1	Baffle
93-4352	2	1	1	Decal-Shroud
93-7024	1	28:1	4	Bushing
93-8470	2	10	1	Screw-Clamp
93-8492	4	6	1	Wheel-Rear
94-1864	1	33	1	Screw-Baffle
94-3313	4	17	1	Wheel-Rear
95-2747	1	35	1	Fitting-Washout
95-4457	5	8	1	Rope-Guide
98-1428	5	6	1	Handle
98-1429	1	13	1	Cover-Sheild
98-1430	3	2	1	Blade-43cm
98-1431	5	11	1	Bail-Brake
98-1437	5	24	1	Decal-Instruction
	2	9	1	Engine
98-3213	1	15	1	Housing-Deck
98-3216	4	16	2	Retainer-Axle

*Not Illustrated

Toro Part Number Index (cont.)

Part No.	Page No.	Ref. No.	Qty.	Description
98-3222	1	34	2	Cap-Front Axle
98-3226	4	18	2	Cap-Rear Axle
98-3232	4	1	1	Rod-Trigger
98-3236	1	7	1	Trigger-HOC
99-1700	1	10	1	Door-Discharge
99-1705	5	23	1	Mount-Handle
99-1708	1	10:1	1	Decal-Danger
99-1709	1	1	1	Decal-Deck
99-1710	5	2	1	Mount-Handle
99-1711	1	25	2	Nut-Lock
99-1712	1	27	2	Bolt-Wheel
99-1713	1	30	2	Washer-Wave
99-1717	5	2:1	1	Spacer
99-1717	5	23:1	1	Spacer
99-1724	5	17	1	Cable-Brake
2210-249	2	11	1	Clamp-Casing
2210-316	2	3	1	Rope-Stop
321-48	5	13	1	Screw-HH
3250-13	1	21	1	Screw-PPH
3253-22	3	4	1	Washer-Lock
3256-1	5	15	1	Washer-Flat
3256-21	1	18	1	Washer-Flat
3284-5	1	8	1	Pin-Groove
3290-378	2	5	1	Tie-Cable
3296-2	1	17	1	Nut-Lock
3296-73	5	10	2	Nut-Lock
32112-11	1	22	1	Nut
32144-73	2	6	3	Screw-HWHTF
32144-97	5	19	2	Screw-PPH
32144-102	2	8	3	Screw
32144-111	1	3	6	Screw - PPH
32144-121	2	2	2	Screw

*Not Illustrated

