



TOWER REPAIR KIT for LAWN TRACTORS

PART No. 98-9880

INSTALLATION INSTRUCTIONS

Loose Parts

Note: Use the chart below to identify parts used for assembly.

DESCRIPTION	QTY.	USE
Pivot rod	1	
Hex Spacer nut, 3/8-16 x 1" (26 mm)	2	
Screw, 3/8-16 x 1/2" (13 mm) hex socket head	2	
Threadlocker adhesive #242	1	
Installation Instructions	1	Read before installing

Installation

1. Drain the fuel tank; refer to operator's manual.

2. Remove the left side screw securing the fuel tank rod and tilt rod up. Set the fuel tank on engine to gain access to the back side of the dash (Fig. 1).

CAUTION

POTENTIAL HAZARD

- In certain conditions gasoline is extremely flammable and highly explosive.

WHAT CAN HAPPEN

- A fire or explosion from gasoline can burn you, others, and cause property damage.

HOW TO AVOID THE HAZARD

- Drain gasoline from the fuel tank when the engine is cold. Do this outdoors in an open area. Wipe up any gasoline that spills.
- Never drain gasoline near an open flame or where gasoline fumes may be ignited by a spark.
- Never smoke a cigarette, cigar or pipe.

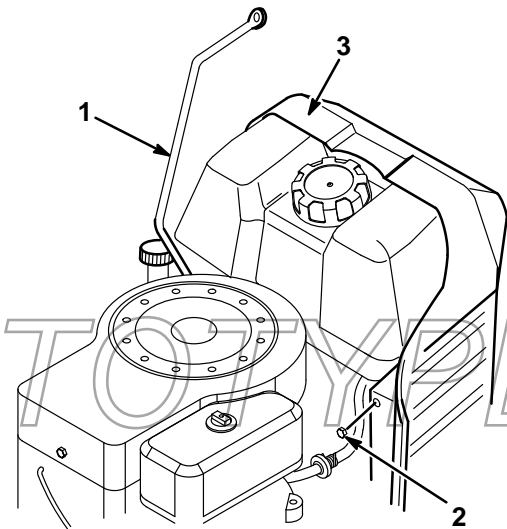


Figure 1

1. Fuel tank rod
2. Screw

3. Tower

3. Loosen flange nuts on deck lever pivot rod. Tap pivot loose from mounting position (Fig. 2).
4. Remove pivot rod, pivot rod clamps, flange nuts, washers, hairpins and wedge nuts. Discard all pieces except the flange nuts, washers, and hairpins (Fig 2).

Note: In removing the pivot shaft, rotate it upward and slide out of deck engagement lever.

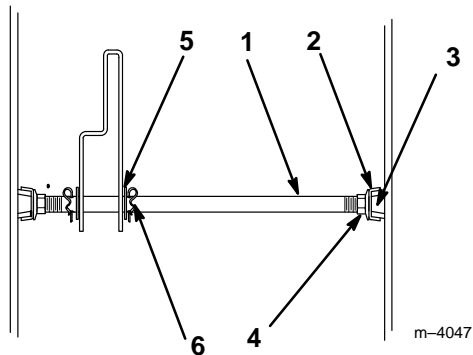


Figure 2

- | | |
|--------------------|----------------|
| 1. Pivot rod | 4. Flange nut |
| 2. Pivot rod clamp | 5. Flat washer |
| 3. Wedge nut | 6. Hairpin |

5. Place a straight edge aligned across the ends of the depressed areas (Fig. 3) on the tower. Scribe a short mark, in line with the ends, at the center of the third rib from the top on both sides. With the straight edge aligned through the center of the third rib, scribe a short mark across the vertical mark. Drill a 13/32" diameter hole on each side of the tower at these locations.

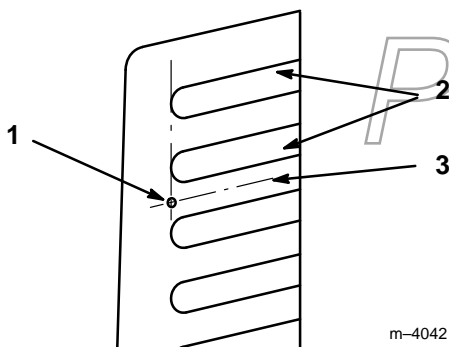


Figure 3

- | | |
|---------------------|-----------|
| 1. 13/32" Dia. hole | 3. Rib #3 |
| 2. Depressed area | |

6. Install the new pivot rod through the deck engagement lever. Install the two washers and hairpins, previously removed, on either side of the deck engagement lever.
7. Install the flange nuts, previously removed (Fig. 4), with the flange toward the outside.

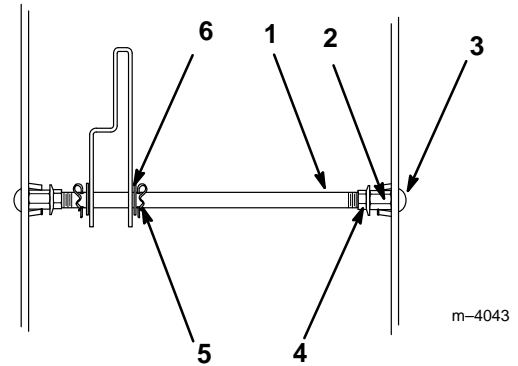


Figure 4

- | | |
|----------------------|----------------|
| 1. Pivot rod | 4. Flange nut |
| 2. Hex spacer | 5. Hairpin |
| 3. Socket head screw | 6. Flat washer |

8. Thread a hex spacer nut onto each end of the pivot rod. Equally adjust each spacer so that the assembly just fits inside the tower (Fig. 4).

Note: If rod is not threaded equally into each spacer, screws may not fully screw into the spacers.

9. Tighten the flange nuts against the hex spacers, while holding the spacers with a wrench.
10. Apply Loctite adhesive, supplied with the kit, to the threads of the 3/8-16 x 1/2" (13mm) screws. Thread the screws into the spacers. Tighten sufficiently, being careful not to deform the plastic.

11. Reinstall the fuel tank.