



**Power Throw™**

# **824 XL Snowthrower**

**Model No. 38083-9900001 & Up**

**Model No. 38084-9900001 & Up**

---

## **Parts Catalog**

## ORDERING REPLACEMENT PARTS

To order replacement parts, please supply: the part number, the quantity, and the description of each part desired.

## Contents

Description	Page	Description	Page
Auger and Housing Assembly . . . . .	1	Handle and Controls Assembly . . . . .	7
Auger and Housing Assembly (Continued) . . . . .	2	Handle and Controls Assembly (Continued) . . . . .	8
24" Auger Gearcase Assembly No. 74-1560 . . . . .	3		
Upper Traction Assembly . . . . .	4		
Lower Traction Assembly . . . . .	5		
Engine and Frame Assembly . . . . .	6		

## Accessories

Description	Model / Parts No.	Description	Model / Parts No.
110 Vac Electric Starter Kit . . . . .	38039	Drift Breaker . . . . .	66-7960
Tire Chain Kit . . . . .	56-2700	Snow Cab . . . . .	95-2650
Light Kit . . . . .	66-7941		

## Part Description Abbreviations

Part descriptions in this catalog may include the following abbreviations.

Abbreviation	Meaning	Abbreviation	Meaning
AR . . . . .	as required	HWHTF . . . . .	hex washer head thread forming
ASM . . . . .	assembly	INC . . . . .	incorporated
CARR . . . . .	carriage	LH . . . . .	left hand
DEG . . . . .	degrees	PH . . . . .	pan head
FH . . . . .	flat head	PPH . . . . .	Phillips pan head
GA . . . . .	gauge	PTO . . . . .	power take off
HF . . . . .	hex flange	RH . . . . .	right hand
HFW . . . . .	hex flange washer	SFH . . . . .	slotted fillister head
HH . . . . .	hex head	SH . . . . .	square head
HHF . . . . .	hex head flange	SHWH . . . . .	slotted hex washer head
HHST . . . . .	hex head self tapping	SPH . . . . .	slotted pan head
HJ . . . . .	hex jam	STD . . . . .	standard
HOC . . . . .	height-of-cut	TAP . . . . .	self tapping
HS . . . . .	hex socket	TH . . . . .	truss head
HSBH . . . . .	hex socket button head	TTH . . . . .	Torx truss head
HSFH . . . . .	hex socket flat head	WH . . . . .	wing head
HSH . . . . .	hex socket head		
HWH . . . . .	hex washer head		

## Important Format Explanations

This catalog uses special formats to convey information in illustrations and parts lists. Specifically, one format is used in conjunction with service assemblies and another with quantities associated with reference numbers.

## Service Assemblies

Parts within service assemblies have reference numbers in the form  $X:Y$ .  $X$  is the reference number of the service assembly and  $Y$  is a sequential number unique to each part within the service assembly.

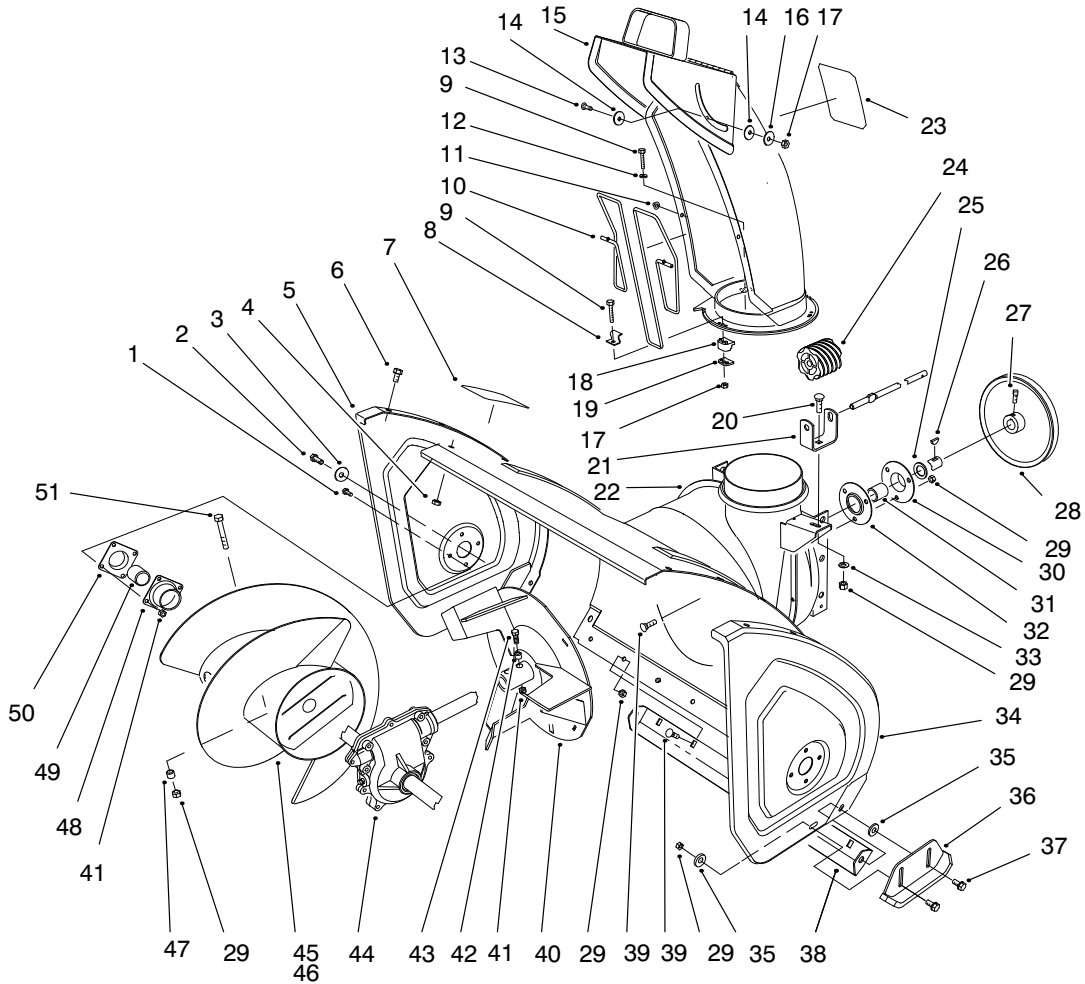
For example, a wheel assembly might be identified by reference number 6, the tire by 6:1, the valve by 6:2, and the wheel by 6:3. When you order the assembly identified by reference number 6, you receive all parts identified by reference numbers 6:1, 6:2, and 6:3. However, you may also order any part individually.

Reference numbers of this type appear in part lists and as callouts in illustrations.

## Reference Numbers with Quantities

Illustrations may have a quantity in parentheses next to a reference number, in the form  $X (Y)$ .  $X$  is the reference number.  $Y$  in parentheses is the quantity of the part identified by the reference number.

For example, the illustration callout 4 (2) indicates that two parts are used in that instance.



Sheet No.:2

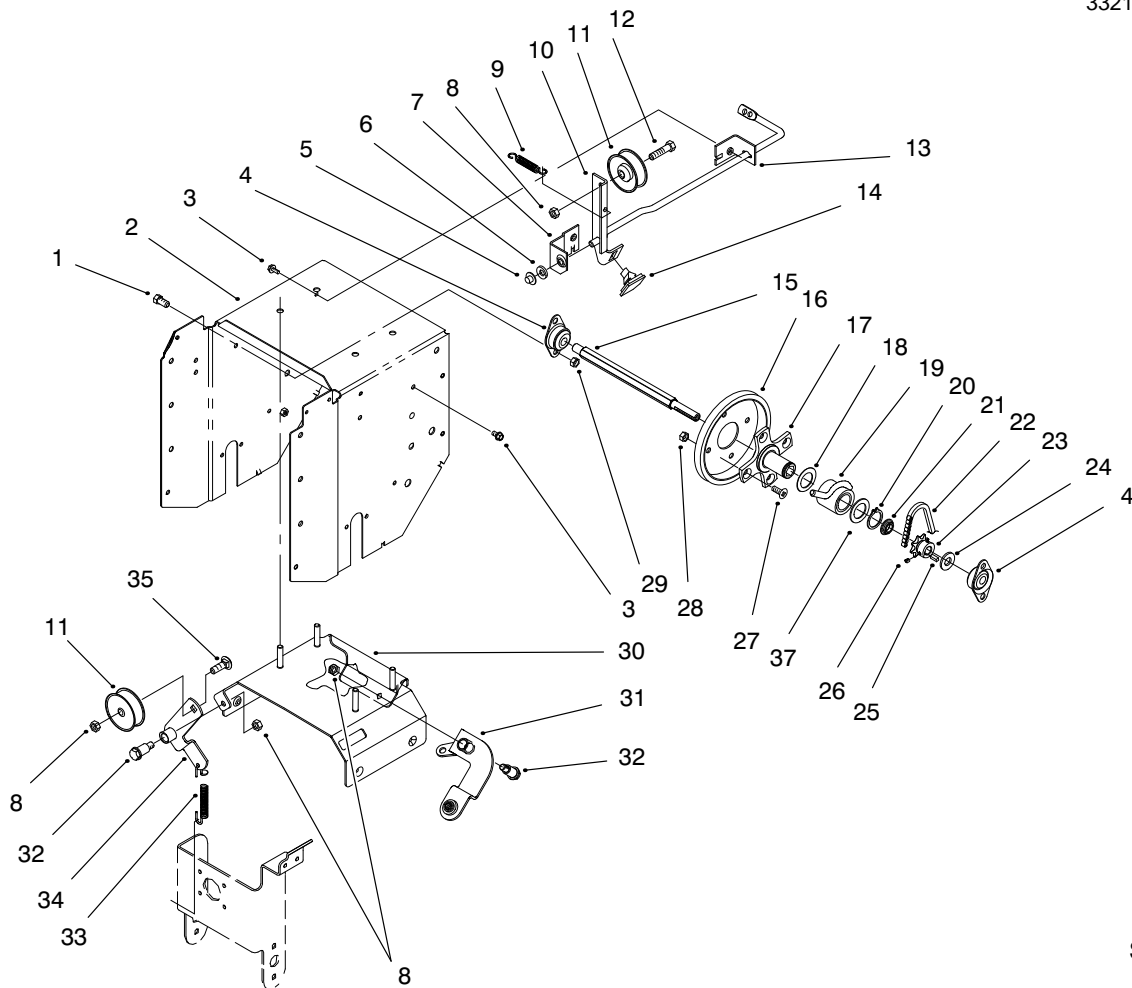
## Auger and Housing Assembly

Ref. No.	Part No.	Qty.	Description
1	321-3	8	Screw-HH
2	323-4	2	Screw-HH
3	3-0750	2	Washer-Retaining
4	3296-47	12	Nut-Lock
5	66-7821-01	1	Plate-Side
6	3234-28	12	Screw-HHF
7	53-7670	1	Decal-Warning (Only On: 38083)
7	94-2568	1	Decal-Warning (Only On: 38084)
8	63-3130	1	Clip-Guard
9	3274-13	3	Screw-HSH
10	63-3020	1	Guard-Chute
11	3290-326	2	Nut-Push
12	3256-14	2	Washer-Flat
13	32122-32	1	Screw-TH
14	63-2900	2	Washer-Plastic
15	95-2661	1	ASM-Chute (Only On: 38083)
15	95-2662	1	ASM-Chute (Only On: 38084)
16	3256-61	1	Washer-Flat
17	3296-2	4	Nut Lock
18	62-1430	3	Retainer-Chute
19	63-2670	3	Plate-Retainer
20	3230-1	1	Bolt-CARR

Ref. No.	Part No.	Qty.	Description
21	63-2180	1	Bracket-Worm
22	95-2663	1	ASM-Housing (Only On: 38083)
22	95-2664	1	ASM-Housing (Only On: 38084)
23	94-2558	1	Decal-Danger (Only On: 38084)
23	94-8079	1	Decal-Danger (Only On: 38083)
24	62-0820	1	Gear-Worm
25	252-80	1	Washer-Thrust
26	3257-23	1	Key-Woodruff
27	3242-4	2	Screw-Set
28	62-1300	1	Pulley-Impeller
29	3296-29	14	Nut-Lock
30	26-6110	1	Bearing-Flange
31	63-3450	1	Bearing-Ball
32	26-6120	1	Bearing-Flange
33	3256-23	1	Washer-Flat
34	66-7831-01	1	Plate-Side
35	52-2861	4	Washer
36	74-1440-01	2	Skid
37	3234-5	4	Screw-HHF
38	66-7762-01	1	Blade-Scraper
39	3230-23	9	Bolt-CARR
40	66-7910-03	1	Impeller





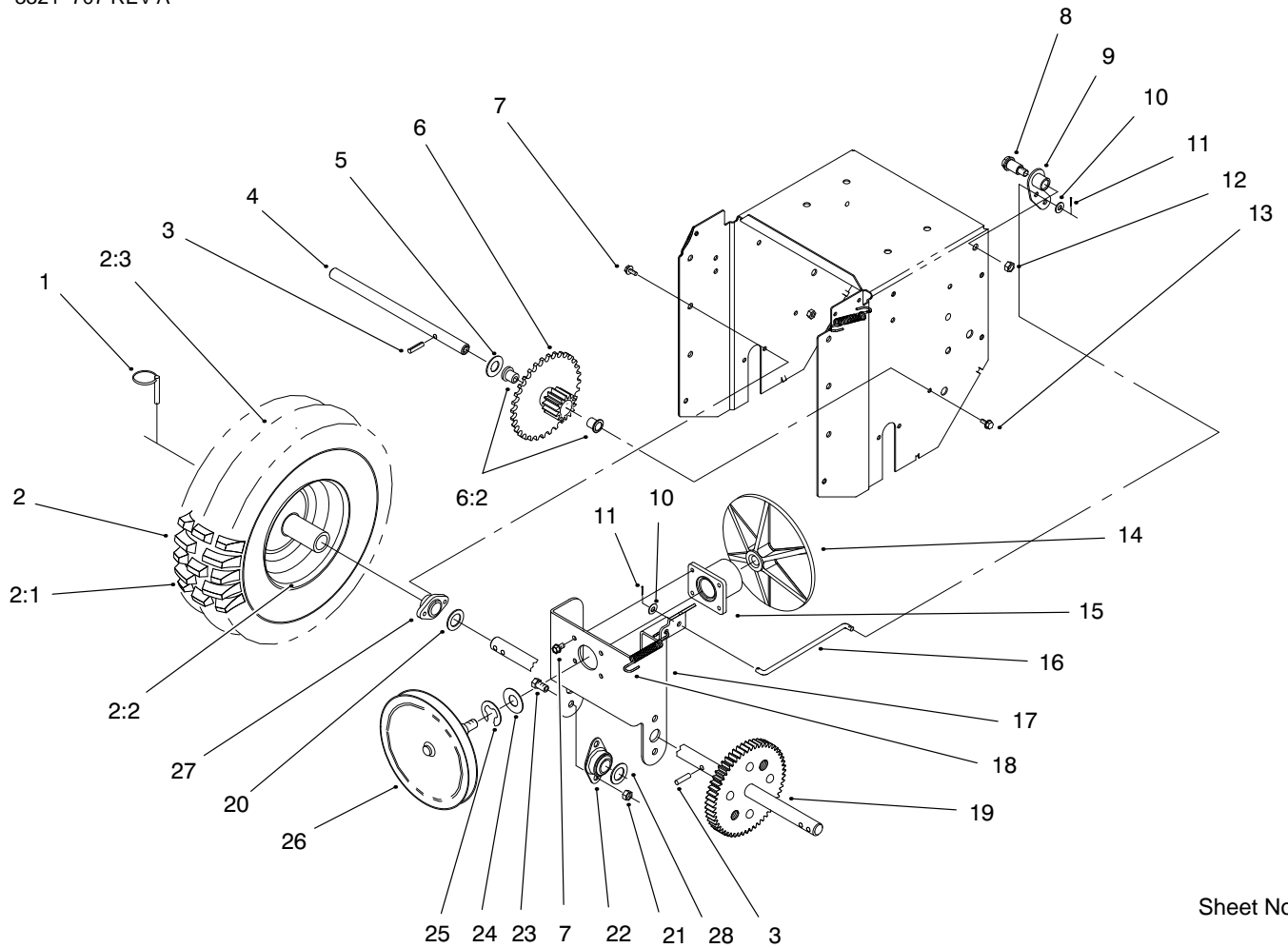


Sheet No.:3

## Upper Traction Assembly

Ref. No.	Part No.	Qty.	Description
1	323-4	4	Screw-HH
2	94-8852-01	1	Frame
3	32144-4	6	Screw-TAP
4	94-8824	2	Bearing-Triangle 1/2"
5	3290-320	1	Nut-Push
6	3256-24	1	Washer-Flat
7	94-8829	1	Mounting-Bracket
8	3296-59	4	Nut-Lock
9	53-7570	1	Spring-Auger Disengage
10	94-8828-03	1	Auger Clutch Rod
11	3-4244	2	Pulley-Idler
12	323-29	1	Screw-HH
13	94-8841	1	Mtg-Clutch
14	66-8060	1	ASM-Brake
15	94-8816	1	Shaft-Hex
16	40-8170	1	Friction Wheel
17	95-7931	1	Hub-Traction Disc
18	9547	1	Washer
19	94-8883	1	ASM-Slider Ring
20	32151-36	1	Ring-Retaining Ext
21	94-8862	1	Spacer Stop
22	20-1810	1	Chain w/Link
23	5-9820	1	Sprocket 8t
24	87-7270	1	Washer-Hardened
25	94-8850	1	Key-Square

Ref. No.	Part No.	Qty.	Description
26	3245-32	2	Screw-Set
27	322-3	4	Screw-HH
28	3296-29	4	Nut-Lock
29	3296-39	4	Nut-Lock
30	94-8851-01	1	ASM-Brace/Stud
31	94-8821	1	ASM-Shift Arm
32	94-8859	2	Shoulder Bolt
33	94-8870	1	Spring-Extension Idler
34	94-8864	1	Idler-Bracket/Hub
35	3231-26	1	Screw-CARR
36	9202594	1	Washer
37	98-2252	1	Washer-Thrust

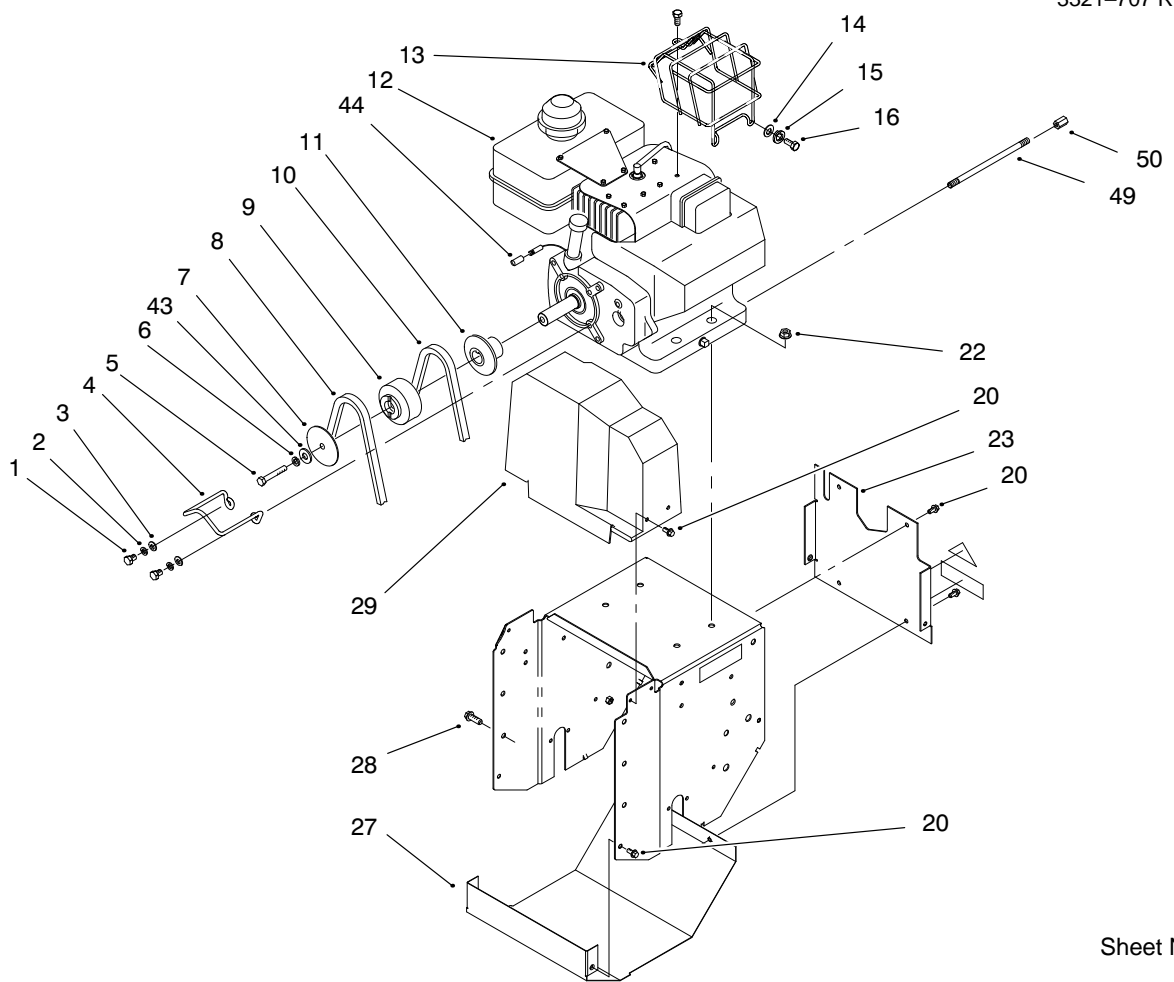


Sheet No.:4

## Lower Traction Assembly

Ref. No.	Part No.	Qty.	Description
1	3290-243	2	Pin-Lynch
2		2	ASM-Wheel
2:1	231-120	2	Tire
2:2	241-131	2	Rim
2:3	232-46	2	Tube
3	32121-9	4	Pin-Roll
4	94-8814	1	Shaft-Intermediate
5	7-3590	1	Washer
6	94-8856	1	ASM-Gear & Bushing
6:2	94-8871	2	Bushing (Only On: 38083)
7	32144-4	8	Screw-TAP
8	94-8859	1	Shoulder Bolt
9	94-8822	1	Bellcrank-Hub
10	3256-67	2	Washer-Flat
11	3272-4	2	Pin-Cotter
12	3296-59	1	Nut-Lock
13	32144-14	2	Screw-HWH
14	94-8857	1	Plate-Friction
15	94-8845	1	ASM-Bearing/Hub
16	94-8818	1	Rod-Traction (Inner)
17	94-8833-03	1	Frame-Friction Plate
18	94-8813	1	Spring-Engage
19	94-8855	1	Axle
20	3-8664	2	Washer-Thrust
21	3296-39	4	Nut-Lock

Ref. No.	Part No.	Qty.	Description
22	68-2970	2	Bearing-Triangle 3/4"
23	323-4	4	Screw-HH
24	252-80	1	Washer-Thrust
25	32151-103	1	Snap Ring
26	94-8823	1	ASM-Pulley & Shaft
27	37-6850	2	Bearing-Axle
28	3-6498	2	Washer-Thrust

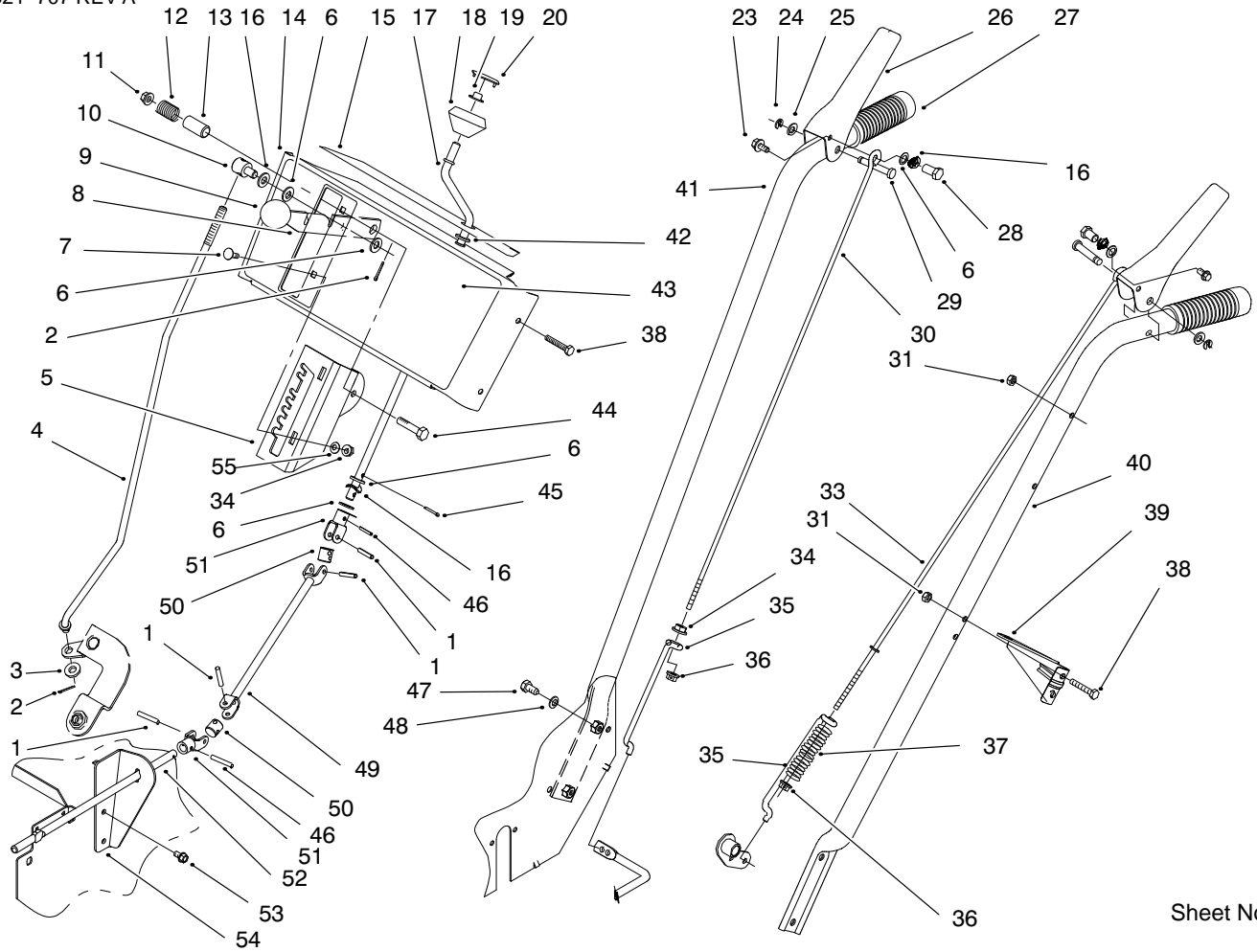


Sheet No.:5

## Engine and Frame Assembly

Ref. No.	Part No.	Qty.	Description
1	3210-3	2	Screw-HH
2	3253-4	2	Washer-Lock
3	3256-23	2	Washer-Flat
4	95-7917	1	Guide-Belt
5	3212-8	1	Screw-HH Cap
6	3253-6	1	Washer-Lock
7	62-0940	1	Sheave-Half
8	94-8803	1	Belt-Impeller
9	94-8849	1	Pulley-Engine
10	94-8812	1	Belt-Traction
11	62-0920	1	Sheave-Half
12		1	Engine-Tecumseh
13	94-2763	1	Guard-Muffler (Only On: 38084)
14	3256-49	2	Washer-Flat (Only On: 38084)
15	3253-17	2	Washer-Lock (Only On: 38084)
16	93-8048	2	Screw-Self Drilling (Only On: 38084)
20	32144-4	11	Screw-TAP
22	32128-20	4	Nut-Lock
23	94-8842-01	1	Plate-Back
27	94-8844-01	1	Cover-Lower Traction
28	32144-14	6	Screw-HWH
29	94-8802	1	Cover-Belt

Ref. No.	Part No.	Qty.	Description
43	3256-41	1	Washer-Flat
44	94-2782	1	Cap-Wire
49	289-34	1	Nipple-Pipe
50	288-2	1	Cap-Pipe



Sheet No.:6

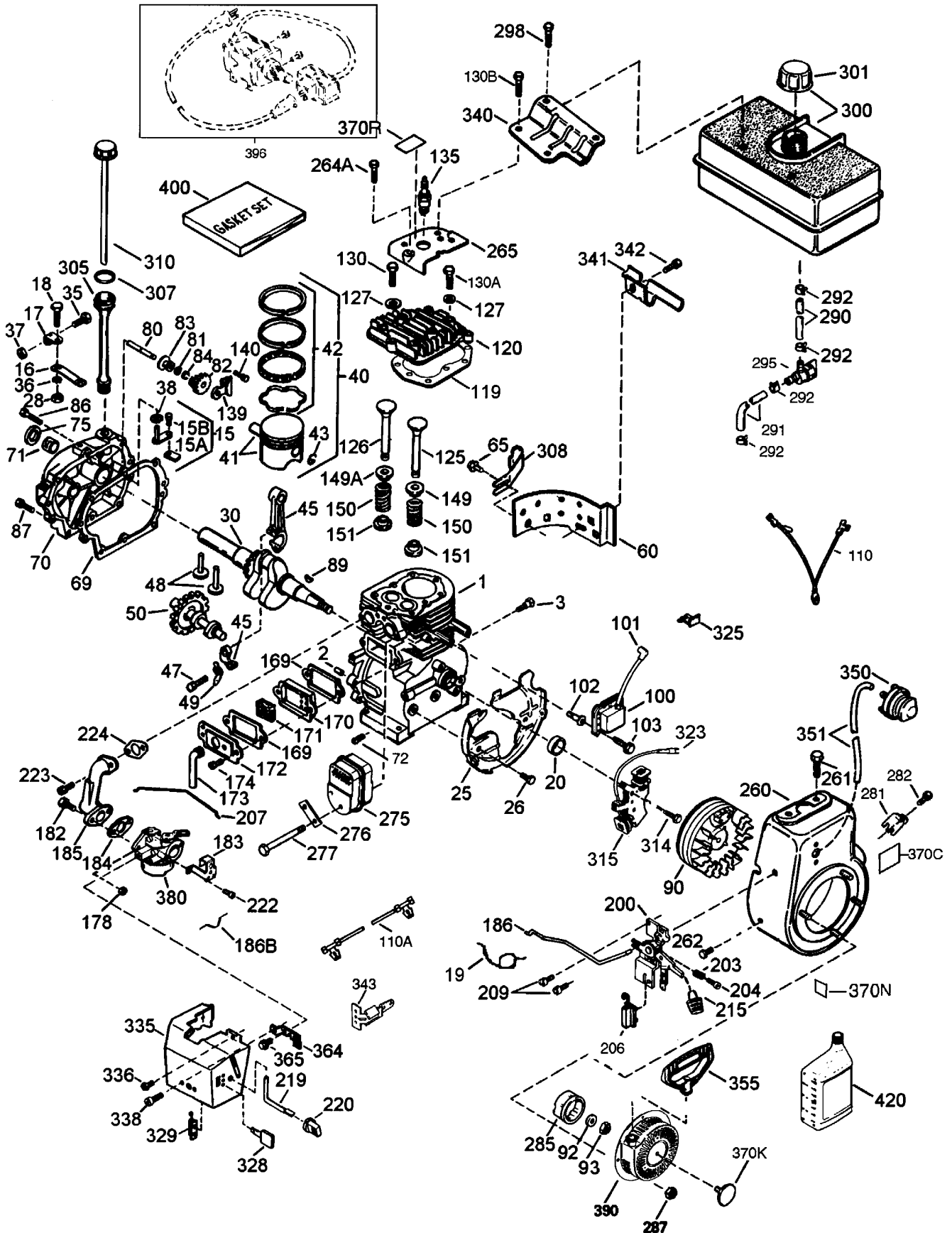
## Handle and Controls Assembly

Ref. No.	Part No.	Qty.	Description
1	32121-16	4	Pin-Roll
2	3272-4	2	Pin-Cotter
3	3256-38	1	Washer-Flat
4	94-9875	1	Rod-Shift
5	99-1799-03	1	Mount-Speed Selector
6	3256-24	6	Washer-Flat
7	3229-11	2	Bolt-CARR
8	94-8806-03	1	Speed Selector
9	233-21	1	Knob
10	110656	1	Trunion
11	32128-13	1	Nut-Lock Flange
12	37-9150-01	1	Spring
13	40-8130	1	Spacer-Speed Selector
14	99-5966	1	Panel-Control Asm (Only On: 38083)
14	99-5967	1	Panel-Control Asm (Only On: 38084)
15	99-5953	1	Decal-Control Panel Back (Only On: 38084)
15	99-5952	1	Decal-Control Panel Back (Only On: 38083)
16	612586	4	Washer-Spring
17	94-8810	1	Rod-Upper Crank
18	62-1320	1	Knob-Control
19	3290-320	1	Nut-Push

Ref. No.	Part No.	Qty.	Description
20	62-1520	1	Cover-Knob
23	3234-13	2	Screw-HHF
24	32151-73	2	Ring-Clip
25	3256-23	2	Washer-Flat
26	63-3640	2	Handle-Control
27	74-1360	2	Grip-Handle
28	47-4990	2	Post-Linkage Mount
29	52-5600	2	Pin-Control Lever
30	94-8838	1	Rod-Auger Engage (Upper)
31	3296-42	6	Nut-Lock
33	94-8837	1	Rod-Traction (Upper)
34	32128-33	1	Nut-Hex Flange
35	94-8836	2	Rod-Lower Traction
36	32128-32	2	Nut-Hex Flange
37	38-4520	1	Spring-Compression
38	321-9	6	Screw-HH
39	94-8839-03	1	Bracket-Chute Crank Upper
40	95-2695-03	1	Handle-Left
41	94-8804-03	1	Handle-Right



# Engine Tecumseh Model # HMSK80-155645V



Obtain Parts From Tecumseh

# Engine Tecumseh Model # HMSK80 – 155645V†

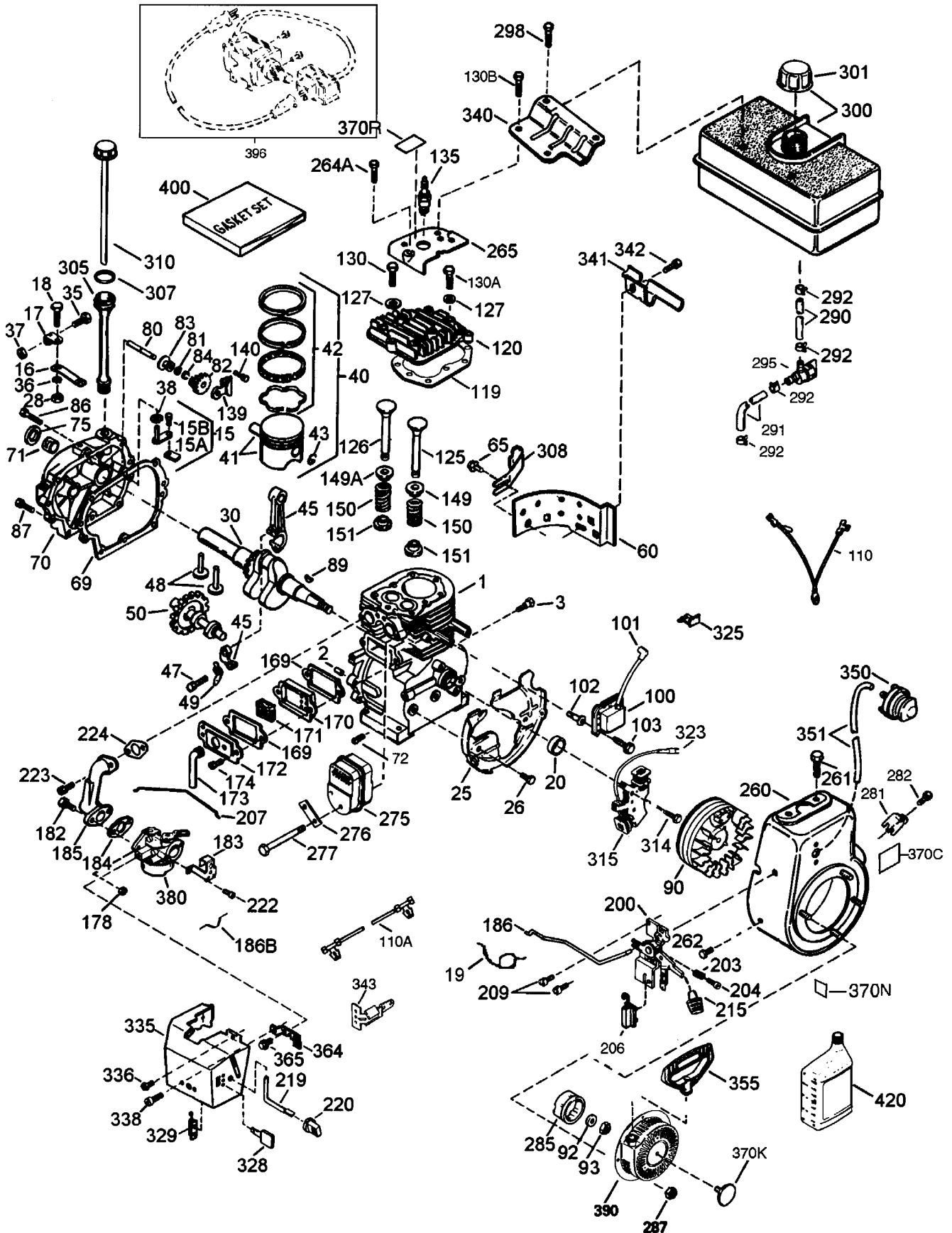
Ref. No.	Part No.	Description	No. Used
1	35385	Cylinder Asm (Incl. Ref. #2, 20, & 72)	1
2	27652	Dowel Pin	2
3	650820	Screw	2
15	30699C	Governor (Incl. Ref. #15A & 15B)	1
15A	30700	Governor Yoke	1
15B	650494	Screw	1
16	33454	Governor Lever	1
17	29916	Governor Lever Clamp	1
18	651028	Screw	1
19	34663	Spring – Speed Control	1
20	35319	Oil Seal	1
25	36460	Blower Housing Baffle	1
26	650561	Screw	2
28	30322	Lock Nut	1
30	35571A	Crankshaft	1
35	29826	Screw	1
36	29918	Lock Washer	1
37	29216	Lock Nut	1
38	29642	Retaining Ring	1
40	40011	Piston, Pin & Ring Set (Std.)	1
40	40012	Piston, Pin & Ring Set (.010" OS)	1
41	40009	Piston & Pin Asm (Std.) (Incl. Ref. #43)	1
41	40010	Piston & Pin Asm (.010" OS) (Incl. Ref. #43)	1
42	40013	Ring Set (Std.)	1
42	40014	Ring Set (.010" OS)	1
43	27888	Piston Pin Retaining Ring	2
45	36897	Connecting Rod Asm (Incl. Ref. #47, & 49)	1
47	651033	Connecting Rod Bolt	2
48	34034	Valve Lifter	2
49	36896	Oil Dipper	1
50	35375	Camshaft (MCR)	1
60	33273A	Blower Housing Extension	1
65	650128	Screw	1
*69	35262A	Cylinder Cover Gasket	1
70	35376	Cylinder Cover (Incl. Ref. #71, 75, & 80)	1
71	35377	Crankshaft Bushing	1
72	27642	Oil Drain Plug	1
75	35319	Oil Seal	1
80	31845	Governor shaft	1
81	30590A	Washer	1
82	35378	Governor Gear Asm (Incl. Ref. #81)	1
83	30588A	Governor Spool	1

Ref. No.	Part No.	Description	No. Used
84	29193	Retaining Ring	1
86	650833	Screw	7
87	650832	Screw	1
89	32589	Flywheel Key	1
90	611093	Flywheel (W/Ring Gear)	1
92	650880	Lock Washer	1
93	650881	Flywheel Nut	1
100	35135	Solid State Ignition	1
101	610118	Spark Plug Cover	1
102	651024	Solid State Mounting Stud	2
103	651007	Screw, Torx T-15	2
110	35187	Ground Wire	1
110A	37047	Ground Wire	1
*119	36448	Cylinder Head Gasket	1
120	36449	Cylinder Head	1
125	27878A	Exhaust Valve (Std.) (Incl. Ref. #151)	1
125	27880A	Exhaust valve (1/32" OS) (Incl. Ref. #151)	1
126	34035	Intake Valve (Std.) (Incl. Ref. #151)	1
126	34036	Intake Valve (1/32" OS) (Incl. Ref. #151)	1
127	650691	Washer	2
130	6021A	Screw	7
130A	650727	Screw	2
130B	651055	Screw	2
135	35395	Resistor Spark Plug (RJ19LM)	1
139	33369	Governor Gear Bracket	1
140	650836	Screw	2
149	27882	Valve Spring Cap	1
149A	35862	Valve Spring Cap	1
150	27881	Valve Spring	2
151	32581	Valve Spring Keeper	2
*169	27896A	Valve Cover Gasket	2
170	28423	Breather Body	1
171	28424	Breather Element	1
172	28425	Valve Cover	1
173	35350	Breather Tube	1
174	650128	Screw	2
178	29752	Nut & Lock Washer	2
182	30088A	Screw	2
183	34587A	Choke Bracket	1
*184	33263	Carburetor To Intake Pipe Gasket	1
185	33877	Intake Pipe	1
186	34667	Governor Link	1
186B	36652	Spring – Choke	1

† Obtain parts from Tecumseh

\* Included in Gasket Set 36450

# Engine Tecumseh Model # HMSK80-155645V (Cont.)



Obtain Parts From Tecumseh

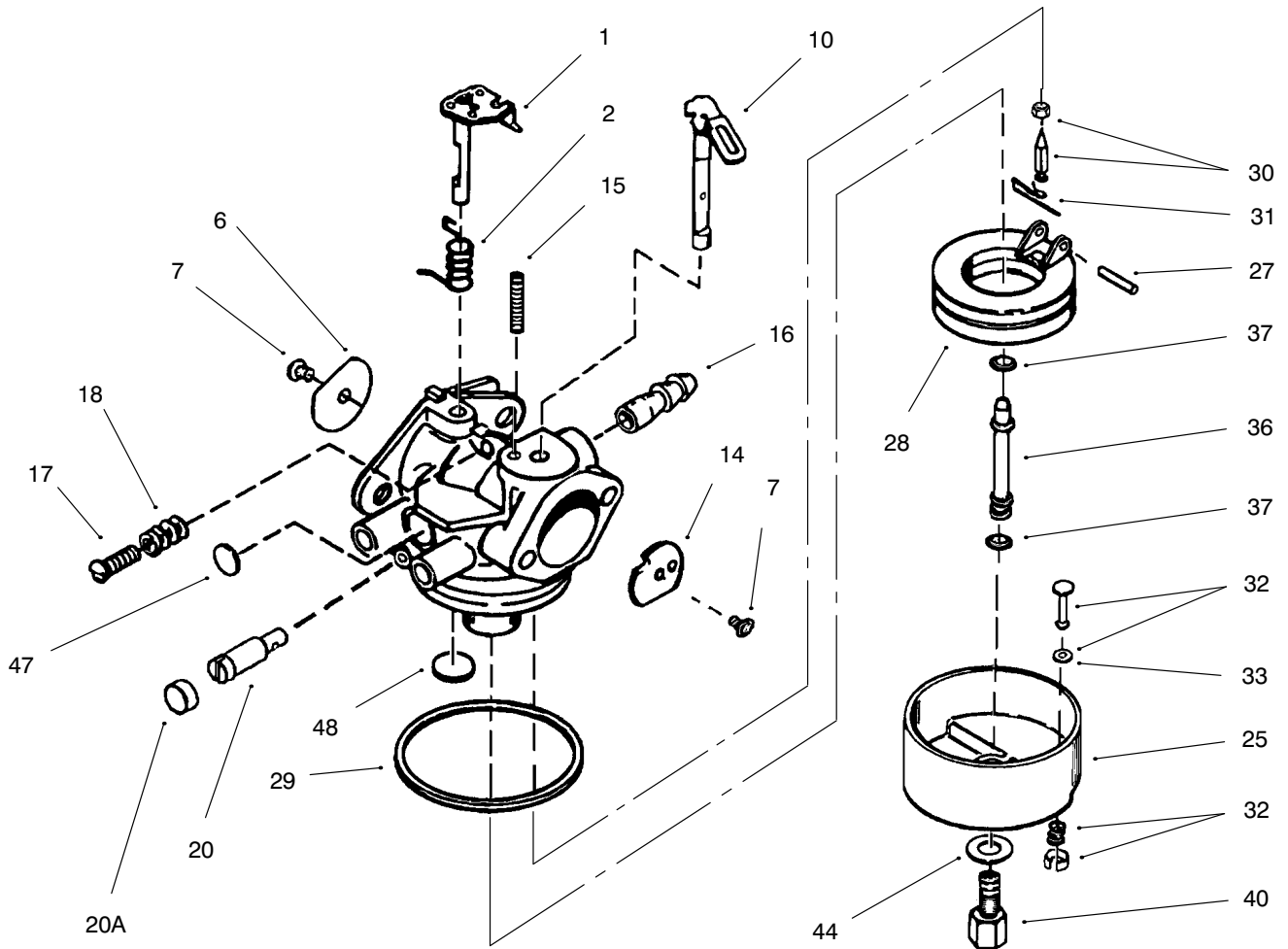
# Engine Tecumseh Model # HMSK80-155645V (Cont.)†

Ref. No.	Part No.	Description	No. Used
200	34677	Control Bracket (Incl. Ref. #19, 203, 204 & 206)	1
203	31342	Compression Spring	1
204	651029	Screw	1
206	610973	Terminal	1
207	33878	Throttle Link	1
209	650821	Screw	2
215	35440	Control Knob	1
219	34586	Choke rod	1
220	35438	Choke Knob	1
222	28820	Screw	2
223	650378	Screw, Torx T-30	2
*224	27915A	Intake Pipe Gasket	1
260	35447A	Blower Housing	1
261	650788	Screw	2
262	29747B	Screw, Torx T-40	2
264A	650802	Screw	1
265	33272B	Cylinder Head Cover	1
275	35056	Muffler	1
276	31588	Locking Plate	1
277	651002	Screw	2
281	33013	Starter bubble Cover	1
282	650760	Screw	1
285	35985B	Starter Cup	1
287	29752	Nut & Lock Washer	4
290	29774	Fuel Line	1
291	30705	Fuel Line	1
292	26460	Fuel Line Clamp	4
295	35857	Fuel shut-Off Valve	1
298	650665	Screw	2
300	34156A	Fuel Tank (Incl. Ref. #292 & 301)	1
301	36246	Fuel Cap	1

Ref. No.	Part No.	Description	No. Used
305	35554	Oil fill Tube	1
307	35499	"O" Ring	1
308	35540	Fill Tube Clip	1
310	36205	Dipstick	1
314	650873	Screw	1
315	611111	Alternator Coil (18 Watt) (Incl. Ref. #323)	1
323	611118	Terminal	1
325	29443	Wire Clip	1
328	35062	Ignition Key	2
329	610973	Terminal	1
335	35057A	Carburetor Cover	1
336	650765	Screw	1
338	28942	Screw	2
340	34154	Fuel Tank Bracket	1
341	34155	Fuel Tank Bracket	1
342	650561	Screw	1
343	35079	Key Switch Bracket	1
350	570682A	Primer Bulb	1
351	32180C	Primer Line	1
355	590574	Starter Handle	1
364	33377	Carburetor Cover Bracket	1
365	650767	Screw	2
370C	36501	Primer Decal	1
370K	36695	Starter Decal	1
370N	35077	Bilingual Decal	1
370R	37119	Warning Decal	1
380	640052	Carburetor (Incl. Ref. #184)	1
390	590749	Rewind Starter	1
396	37000	Electric Starter Motor, 120 Volt (Optional)	1
400	36450A	Gasket Set	1
420	730226	SAE 5W30 4-Cyc. Eng. Oil	1

† Obtain parts from Tecumseh

\* Included in Gasket Set 36450

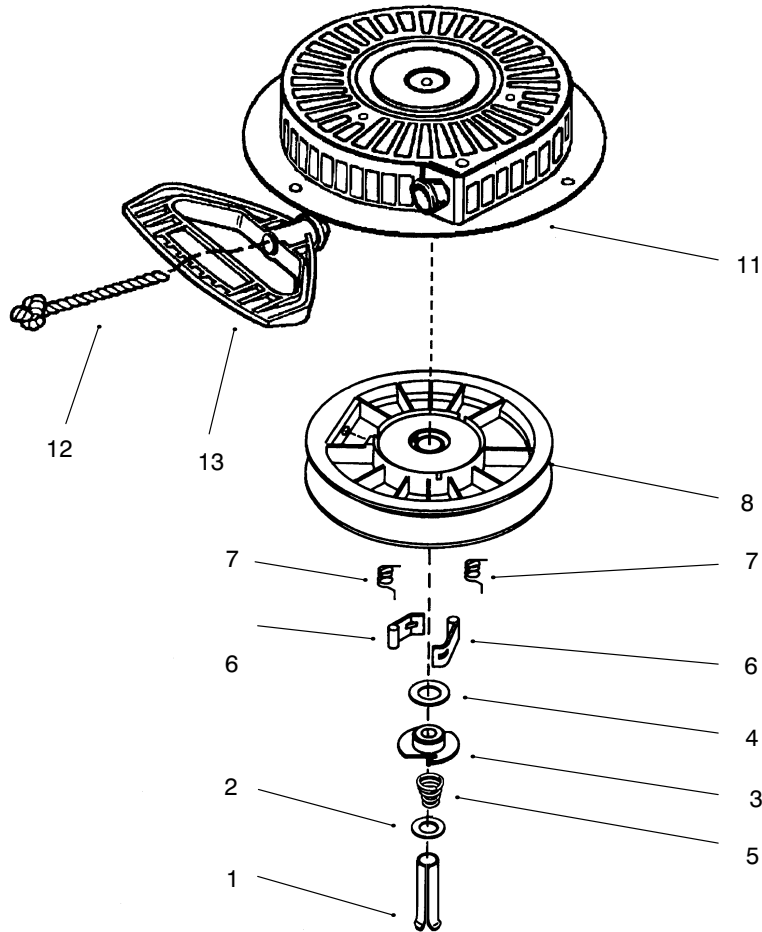


### Carburetor Tecumseh # 640052

Ref. No.	Part No.	Description	No. Used
1	631776A	Shaft/Lever – Throttle	1
2	631970	Spring – Throttle Return	1
6	631778	Shutter – Throttle	1
7	650506	Screw – Shutter	2
10	632112	Shaft/Lever – Choke	1
14	632174	Shutter – Choke	1
15	630735	Spring – Choke Positioning	1
16	632164	Fitting – Fuel Inlet	1
17	650417	Screw – Idle Regulating	1
18	630766	Spring – Tension	1
20	640016	Screw – Idle Adjustment	1
20A	640053	Idle Restrictor Screw Cap	1
21	640053	Cap – Screw Idler Adj.	1
25	631951	Float Bowl Assembly (Incl. Ref. #32 & 33)	1

Ref. No.	Part No.	Description	No. Used
27	631024	Shaft – Float	1
28	632019	Float – Carburetor	1
29	631028	Gasket – Bowl to Body	1
30	631021	Inlet Needle, Seat & Clip Asm (Incl. Ref. #31)	1
31	631022	Clip – Inlet Needle	1
32	27136A	Drain Assembly (Incl. Ref. #33)	1
33	27554	Gasket – Bowl Drain	1
36	640005	Main Nozzle Tube	1
37	632547	O–Ring–Main Nozzle Tube	2
40	640055	High Speed Bowl Nut	1
44	27110	Gasket – Bowl to Body	1
47	630748	Plug – Welch	1
48	631027	Plug – Welch	1

Obtain Parts From Tecumseh



### Recoil Starter # 590749†

Ref. No.	Part No.	Description	No. Used	Ref. No.	Part No.	Description	No. Used
1	590599A	Pin – Spring (Incl. Ref. #4)	1	7	590412	Spring – Dog	2
2	590600	Washer	1	8	590682	Pulley & Rewind Spring Assembly	1
3	590679	Retainer	1	11	590750	Starter Housing Asm	1
4	590601	Washer	1	12	590535	Rope – Starter	1
5	590678	Spring – Brake	1	‡13	590574	Handle – Mitten Grip	1
6	590680	Dog – Starter	2				

† Obtain parts from Tecumseh

‡ Not included with starter

# Toro Part Number Index

Part No.	Page No.	Ref. No.	Qty.	Description
110656	7	10	1	Trunnion
612586	7	16	4	Washer-Spring
9202594	4	36	1	Washer
3-0750	1	3	2	Washer-Retaining
3-4244	4	11	2	Pulley-Idler
3-6498	5	28	2	Washer-Thrust
3-8664	5	20	2	Washer-Thrust
5-9820	4	23	1	Sprocket 8t
7-0045	3	1:3	1	Seal-Oil
7-0045	3	5:3	1	Seal-Oil
7-3590	5	5	1	Washer
20-0980	2	49	2	Bearing-Auger
20-0990	2	48	2	Bearing-Flange
20-1000	2	50	2	Bearing-Flange
20-1810	4	22	1	Chain w/Link
25-5090	2	47	2	Spacer-Auger Hub
26-6110	1	30	1	Bearing-Flange
26-6120	1	32	1	Bearing-Flange
37-6560	3	12	1	Bushing-Input
37-6850	5	27	2	Bearing-Axle
37-915001	7	12	1	Spring
38-4520	7	37	1	Spring-Compression
40-5940	7	22	1	Switch-Key
40-8130	7	13	1	Spacer-Speed Selector
40-8170	4	16	1	Friction Wheel
47-4990	7	28	2	Post-Linkage Mount
52-2861	1	35	4	Washer
52-5600	7	29	2	Pin-Control Lever
53-7570	4	9	1	Spring-Auger Disengage
53-7670	1	7	1	Decal-Warning (Only On: 38083)
62-0120	3	4	1	Gear-Helical
62-0820	1	24	1	Gear-Worm
62-0920	6	11	1	Sheave-Half
62-0940	6	7	1	Sheave-Half
62-1150	3	13	1	Bushing-Worm
62-1300	1	28	1	Pulley-Impeller
62-1320	7	18	1	Knob-Control
62-1430	1	18	3	Retainer-Chute
62-1520	7	20	1	Cover-Knob
62-1530	3	6	1	Shaft-Auger
63-2180	1	21	1	Bracket-Worm
63-2410	6	19	1	Decal-Choke
63-2670	1	19	3	Plate-Retainer
63-2750	2	45	1	Auger-RH (Only On: 38083)
63-2760	2	46	1	Auger-LH (Only On: 38083)
63-2900	1	14	2	Washer-Plastic
63-3020	1	10	1	Guard-Chute
63-3130	1	8	1	Clip-Guard
63-3190	6	18	1	Decal-Throttle
63-3450	1	31	1	Bearing-Ball
63-3640	7	26	2	Handle-Control
63-8360	7	21	1	Key-Ignition
66-6840	6	21	1	Decal-Hot Surface (Only On: 38083)
66-7762	1	38	1	Blade-Scraper
66-7811	3	10	1	Shaft-Impeller
66-7821	1	5	1	Plate-Side
66-7831	1	34	1	Plate-Side
66-7910	1	40	1	Impeller
66-8010	2	42	2	Spacer
66-8060	4	14	1	ASM-Brake
68-2970	5	22	2	Bearing-Triangle 3/4"
68-7450	2	45	1	Auger-RH (Only On: 38084)

\*Not Illustrated

# Toro Part Number Index (cont.)

Part No.	Page No.	Ref. No.	Qty.	Description
68-7460	2	46	1	Auger-LH (Only On: 38084)
74-1360	7	27	2	Grip-Handle
74-1440	1	36	2	Skid
74-1560	2	44	1	ASM-Gearcase
74-1570	3	1	1	Gearcase ASM LH
74-1580	3	5	1	Gearcase ASM RH
87-7270	4	24	1	Washer-Hardened
93-1265	6	21	1	Decal-Hot Surface (Only On: 38084)
93-8032	7	15	1	Decal-Control Panel Back (Only On: 38084)
99-3215	7	15	1	Decal-Control Panel Back (Only On: 38083)
99-3214	8	43	1	Decal-Control Panel
93-8038	6	14	2	Washer-Flat (Only On: 38084)
93-8039	6	15	2	Washer-Lock (Only On: 38084)
93-8048	6	16	2	Screw-Self Drilling (Only On: 38084)
94-2558	1	23	1	Decal-Danger (Only On: 38084)
94-2568	1	7	1	Decal-Warning (Only On: 38084)
94-2572	6	17	1	Decal-Primer
94-2763	6	13	1	Guard-Muffler (Only On: 38084)
94-2782	6	44	1	Cap-Wire
94-8079	1	23	1	Decal-Danger (Only On: 38083)
94-8802	6	29	1	Cover-Belt
94-8803	6	8	1	Belt-Impeller
94-8804	7	41	1	Handle-Right (Only On: 38083)
94-8805	7	40	1	Handle-Left (Only On: 38083)
94-8806	7	8	1	Speed Selector
94-8809	8	52	1	Rod-Lower Crank
94-8810	7	17	1	Rod-Upper Crank
94-8812	6	10	1	Belt-Traction
94-8813	5	18	1	Spring-Engage
94-8814	5	4	1	Shaft-Intermediate
94-8816	4	15	1	Shaft-Hex
94-8818	5	16	1	Rod-Traction (Inner)
94-8821	4	31	1	ASM-Shift Arm
94-8822	5	9	1	Bellcrank-Hub
94-8823	5	26	1	ASM-Pulley & Shaft
94-8824	4	4	2	Bearing-Triangle 1/2"
94-8828	4	10	1	Auger Clutch Rod
94-8829	4	7	1	Mounting-Bracket
94-8833	5	17	1	Frame-Friction Plate
94-8834	8	49	1	Rod-Clevis
94-8836	7	35	2	Rod-Lower Traction
94-8837	7	33	1	Rod-Traction (Upper)
94-8838	7	30	1	Rod-Auger Engage (Upper)
94-8839	7	39	1	Bracket-Chute Crank Upper
94-8840	8	54	1	Bracket-Crank Rod Lower
94-8841	4	13	1	Mtg-Clutch
94-8842	6	23	1	Plate-Back
94-8844	6	27	1	Cover-Lower Traction
94-8845	5	15	1	ASM-Bearing/Hub
94-8849	6	9	1	Pulley-Engine
94-8850	4	25	1	Key-Square
94-8851	4	30	1	ASM-Brace/Stud
94-8852	4	2	1	Frame
94-8855	5	19	1	Axle
94-8856	5	6	1	ASM-Gear & Bushing
94-8857	5	14	1	Plate-Friction
94-8859	4	32	2	Shoulder Bolt
94-8859	5	8	1	Shoulder Bolt
94-8862	4	21	1	Spacer Stop
94-8864	4	34	1	Idler-Bracket/Hub
94-8867	8	50	2	Block-Pivot
94-8868	8	51	2	Mount-Clevis

\*Not Illustrated

# Toro Part Number Index (cont.)

Part No.	Page No.	Ref. No.	Qty.	Description
94-8870	4	33	1	Spring-Extension Idler
94-8871	5	6:2	2	Bushing (Only On: 38083)
94-8872	8	41	1	Handle-,Right (Only On: 38084)
94-8873	7	40	1	Handle-Left (Only On: 38084)
94-8883	4	19	1	ASM-Slider Ring
94-9875	7	4	1	Rod-Shift
95-2661	1	15	1	ASM-Chute (Only On: 38083)
95-2662	1	15	1	ASM-Chute (Only On: 38084)
95-2663	1	22	1	ASM-Housing (Only On: 38083)
95-2664	1	22	1	ASM-Housing (Only On: 38084)
95-7907	6	12	1	Engine-Tecumseh
95-7917	6	4	1	Guide-Belt
95-7931	4	17	1	Hub-Traction Disc
98-2252	4	37	1	Washer - Thrust
99-1799	7	5	1	Mount-Speed Selector
99-3214	8	43	1	Decal-Control Panel
99-3215	7	15	1	Decal-Control Panel Back (Only On: 38083)
99-5966	7	14	1	Panel-Control Asm (Only On: 38083)
99-5967	7	14	1	Panel-Control Asm (Only On: 38084)
231-120	5	2:1	2	Tire
232-46	5	2:3	2	Tube
233-21	7	9	1	Knob
241-131	5	2:2	2	Rim
252-71	3	2	2	Washer-Thrust
252-76	3	15	1	Bearing-Thrust
252-78	3	14	2	Washer-Thrust
252-80	1	25	1	Washer-Thrust
252-80	5	24	1	Washer-Thrust
253-149	3	11	1	Seal-Oil
256-237	3	1:2	1	Bushing
256-237	3	5:2	1	Bushing
256-249	8	42	1	Grommet-Nyliner
256-260	4	18	1	Washer
281-1	3	18	1	Plug-Square Head Pipe
288-2	6	50	1	Cap-Pipe
289-34	6	49	1	Nipple-Pipe
321-3	1	1	8	Screw-HH
321-9	7	38	6	Screw-HH
321-44	2	43	2	Screw
322-3	4	27	4	Screw-HH
322-7	8	44	1	Screw-HH
322-12	2	51	2	Screw HH
323-4	1	2	2	Screw-HH
323-4	4	1	4	Screw-HH
323-4	5	23	4	Screw-HH
323-29	4	12	1	Screw-HH
3210-3	6	1	2	Screw-HH
3212-8	6	5	1	Screw-HH Cap
3229-11	7	7	2	Bolt-CARR
3230-1	1	20	1	Bolt-CARR
3230-23	1	39	9	Bolt-CARR
3231-26	4	35	1	Screw-CARR
3234-5	1	37	4	Screw-HHF
3234-13	7	23	2	Screw-HHF
3234-28	1	6	12	Screw-HHF
3242-4	1	27	2	Screw-Set
3245-32	4	26	2	Screw-Set
3253-4	6	2	2	Washer-Lock
3253-6	6	6	1	Washer-Lock
3256-14	1	12	2	Washer-Flat
3256-22	8	55	2	Washer-Flat
3256-23	1	33	1	Washer-Flat

\*Not Illustrated

# Toro Part Number Index (cont.)

Part No.	Page No.	Ref. No.	Qty.	Description
3256-23	6	3	2	Washer-Flat
3256-23	7	25	2	Washer-Flat
3256-24	4	6	1	Washer-Flat
3256-24	7	6	6	Washer-Flat
3256-38	7	3	1	Washer-Flat
3256-41	6	43	1	Washer-Flat
3256-61	1	16	1	Washer-Flat
3256-67	5	10	2	Washer-Flat
3257-10	3	9	1	Key-Woodruff
3257-23	1	26	1	Key-Woodruff
3272-4	5	11	2	Pin-Cotter
3272-4	7	2	2	Pin-Cotter
3272-9	8	45	1	Cotter Pin
3274-13	1	9	3	Screw-HSH
3290-243	5	1	2	Pin-Lynch
3290-320	4	5	1	Nut-Push
3290-320	7	19	1	Nut-Push
3290-326	1	11	2	Nut-Push
3290-456	8	48	4	Washer-Lock
3296-2	1	17	4	Nut Lock
3296-29	1	29	14	Nut-Lock
3296-39	4	29	4	Nut-Lock
3296-39	5	21	4	Nut-Lock
3296-42	2	41	10	Nut-Lock
3296-42	7	31	6	Nut-Lock
3296-47	1	4	12	Nut-Lock
3296-47	4	28	4	Nut-Lock
3296-59	4	8	4	Nut-Lock
3296-59	5	12	1	Nut-Lock
32121-9	5	3	4	Pin-Roll
32121-16	7	1	4	Pin-Roll
32121-50	8	46	2	Pin-Roll
32122-32	1	13	1	Screw-TH
32128-13	7	11	1	Nut-Lock Flange
32128-20	6	22	4	Nut-Lock
32128-32	7	36	2	Nut-Hex Flange
32128-33	7	34	1	Nut-Hex Flange
32144-4	4	3	6	Screw-TAP
32144-4	5	7	8	Screw-TAP
32144-4	6	20	11	Screw-TAP
32144-4	8	53	1	Screw-TAP
32144-14	5	13	2	Screw-HWH
32144-14	6	28	6	Screw-HWH
32144-14	8	47	4	Screw-HWH
32144-110	3	17	9	Screw-HWHTF
32151-33	3	16	1	Ring-Snap
32151-36	4	20	1	Ring-Retaining Ext
32151-73	7	24	2	Ring-Clip
32151-103	5	25	1	Snap Ring

\*Not Illustrated





