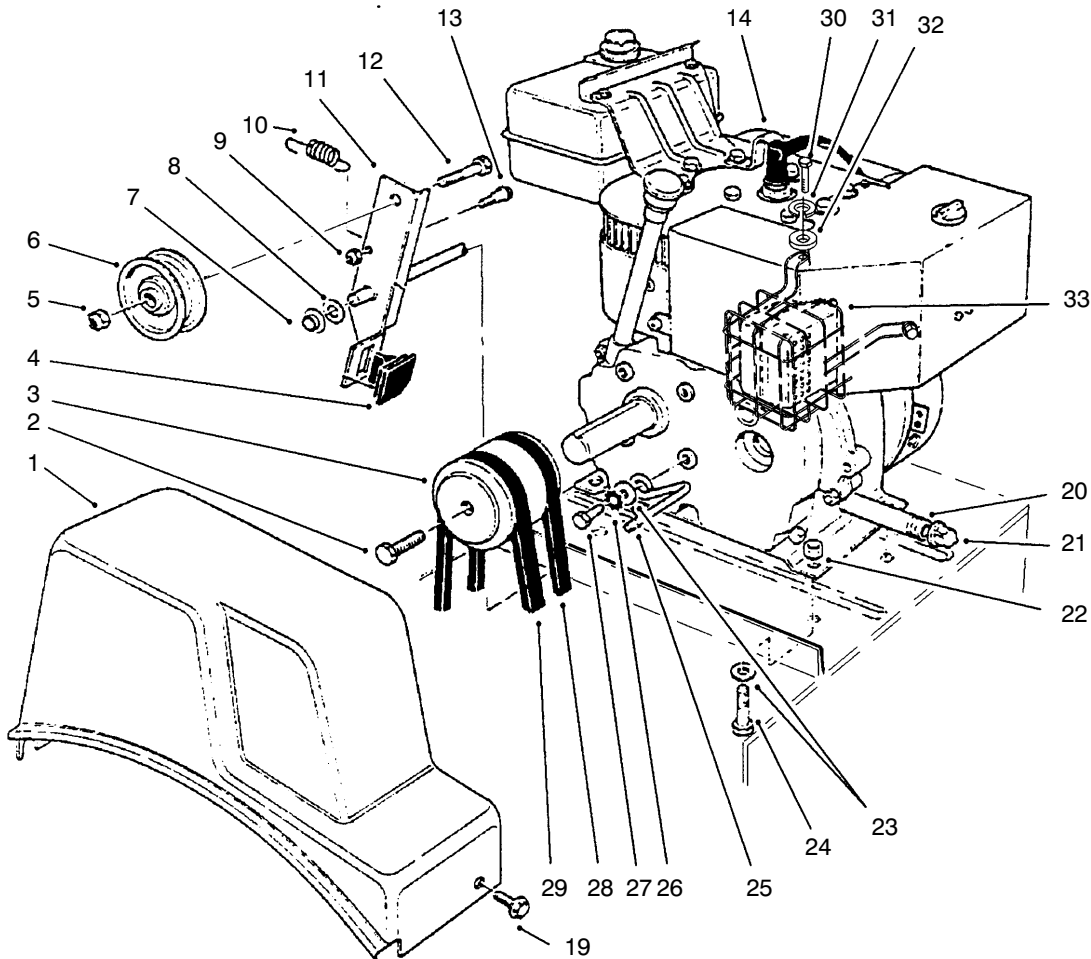




MODEL NO. 38072-9900001 & UP
MODEL NO. 38073-9900001 & UP

PARTS CATALOG

724 SNOWTHROWER



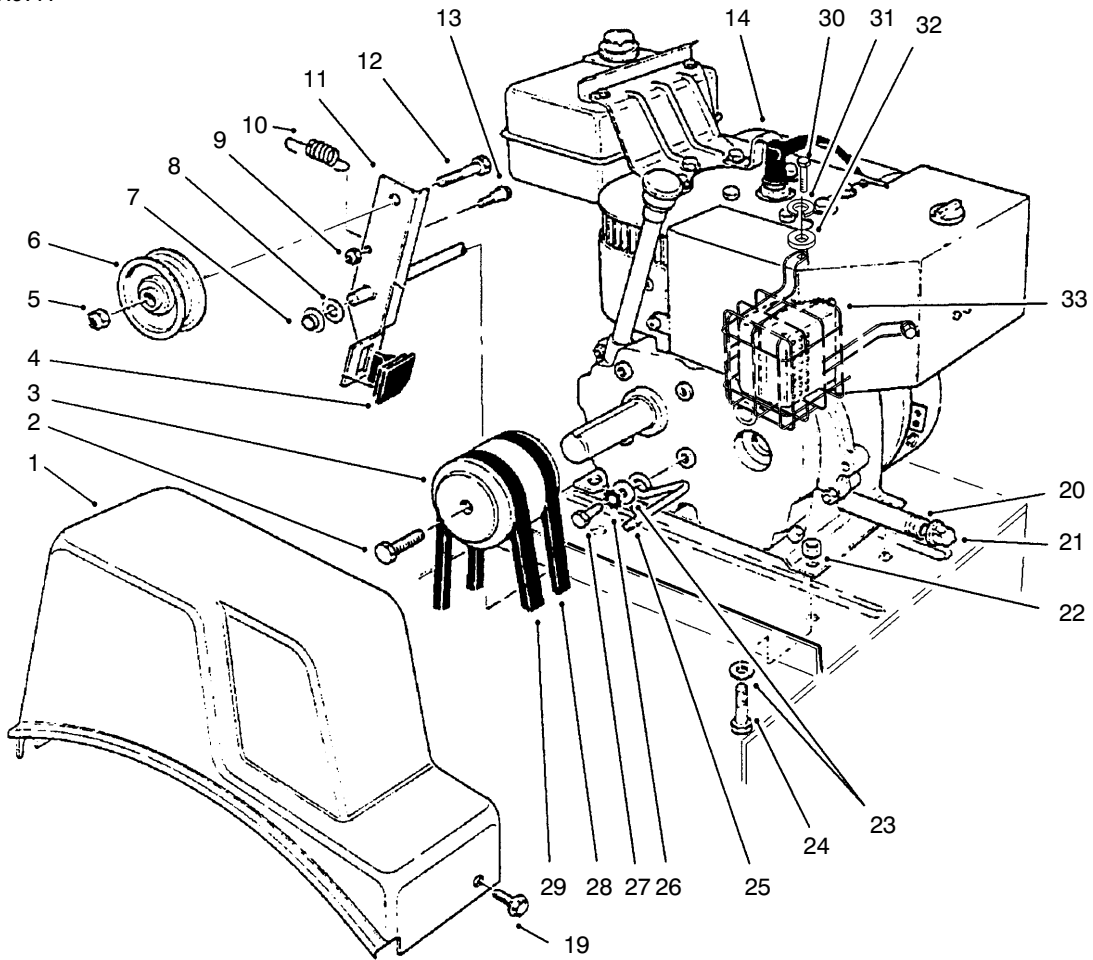
C-1278

ENGINE ASSEMBLY

Ref. No.	Part No.	Description	No. Used
1	37-6900	Cover - Belt	1
2	43-7290	Screw - Special	1
3	74-1370	Engine Pulley	1
4	66-8060	Molded Brake Asm.	1
5	3296-59	Nut - Lock	1
6	3-4244	Idler Pulley	1
7	3290-320	Nut - Push On	1
8	3256-24	Washer - Flat	1
9	3296-56	Nut - Lock	1
10	53-7570	Spring - Auger Disengage	1
11	14-7959	Auger Clutch (Incl. Ref. #4)	1

Ref. No.	Part No.	Description	No. Used
12	323-29	Screw	1
13	42-3560	Bolt - Shoulder	1
14		Engine	1
19	32144-4	Screw - Self Tap.	2
20	289-9	Pipe Nipple	1
21	288-2	Cap	1
22	3296-29	Nut - Lock	4
23	3256-23	Washer - Flat	5
24	322-4	Screw	4
25	37-8990	Retainer - Belt	1
26	3255-8	Washer - Lock Ext. Tooth	1

*Not Illustrated



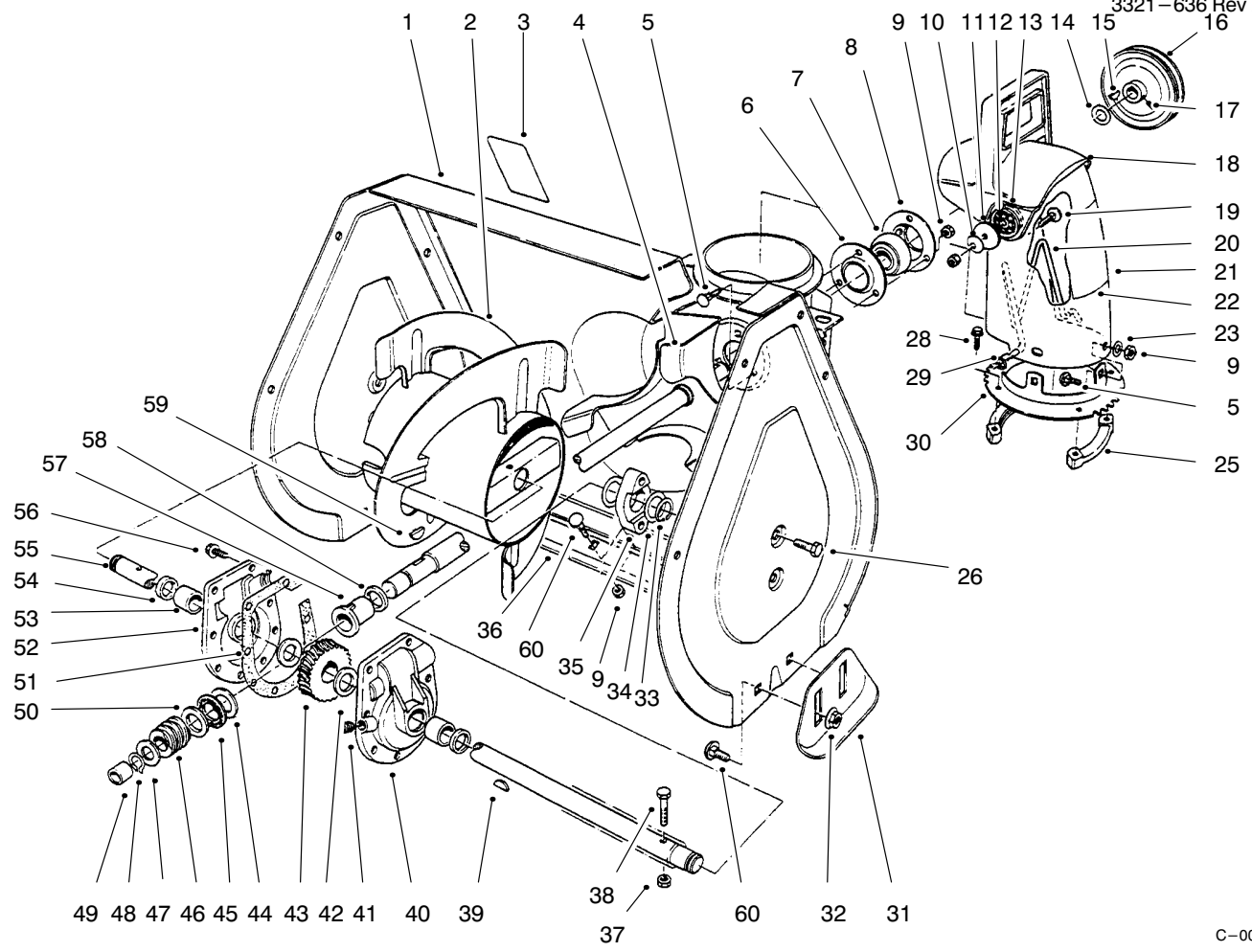
C-1278

ENGINE ASSEMBLY (Continued)

Ref. No.	Part No.	Description	No. Used
27	3210-3	Screw	1
28	37-9090	V-Belt - Traction	1
29	26-9672	V-Belt - Auger	1
†30	42-671	Screw	3

Ref. No.	Part No.	Description	No. Used
31	3253-17	Washer - Lock	3
32	3256-49	Washer - Flat	3
†33	127-19	Guard - Muffler	1

† Order these parts from Tecumseh



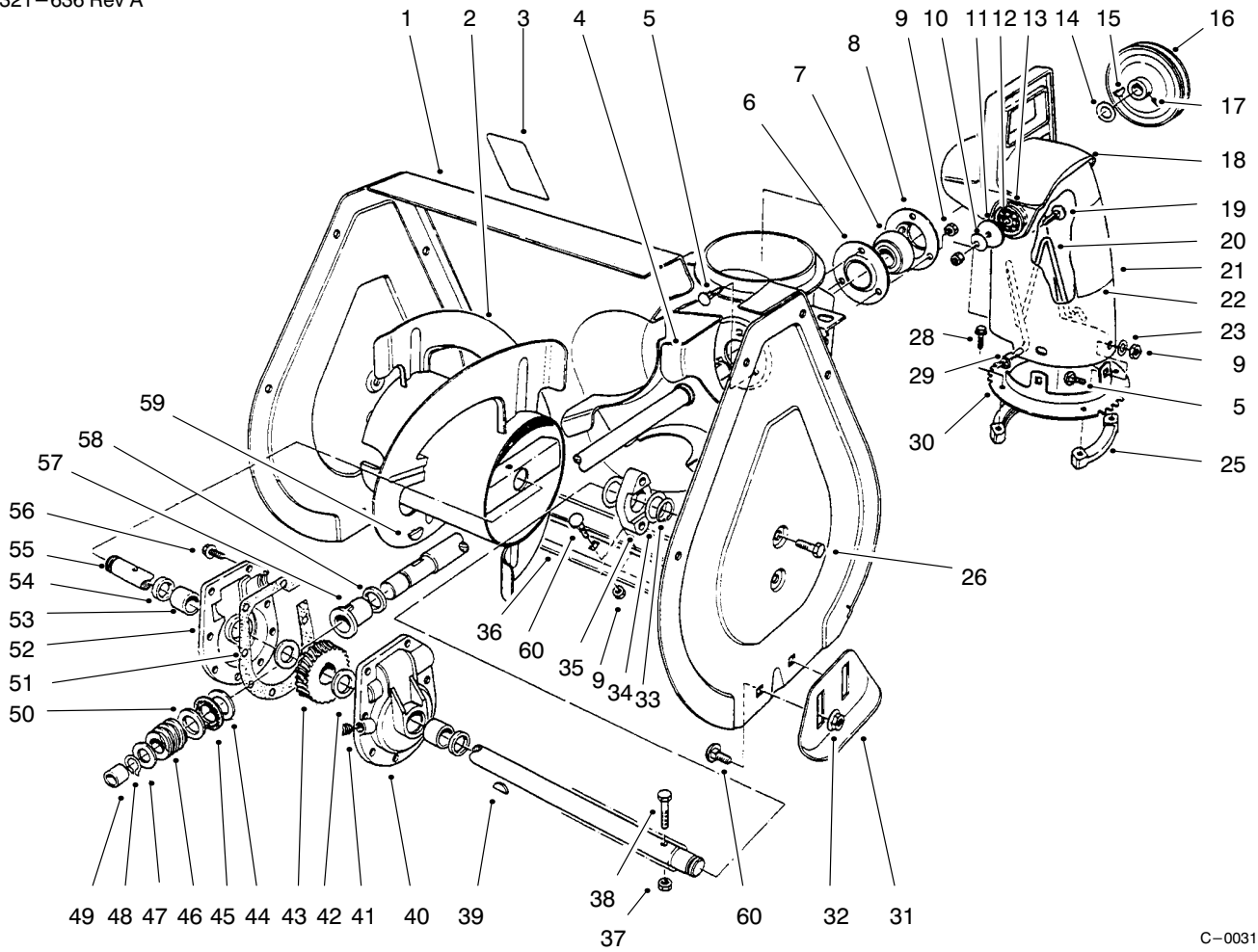
C-0031

AUGER ASSEMBLY

Ref. No.	Part No.	Description	No. Used
1	94-2786	Housing-Auger (Model No. 38072) (Incl. Ref. #3)	1
*	94-2785	Housing-Auger (Model No. 38073) (Incl. Ref. #3)	1
2	74-1600-03	Auger - R.H.	1
*	74-1590	Auger - L.H.	1
3	53-7670	Decal - Auger Warning (Model No. 38072)	1
*	94-2568	Decal - Auger Warning (Model No. 38073)	1
4	37-6990-03	Shaft & Impeller	1
5	3230-18	Bolt - Carriage	6
6	26-6120	Flange - Bearing Front	1
7	63-3450	Bearing - Ball	1
8	26-6110	Flange - Bearing Rear	1
9	3296-29	Nut - Lock	13
10	3290-456	Washer - Belleville	2
11	3256-68	Washer - Flat	2
12	55-8950	Plate - Friction	2
13	20-4320	Washer - Rubber	2

Ref. No.	Part No.	Description	No. Used
14	3-0737	Washer	1
15	3257-23	Key	1
16	37-6890	Pulley	1
17	3242-4	Screw - Set	2
18	56-2680	Deflector	1
19	3230-22	Bolt - Carriage	2
20	56-2670	Chute - Wire	1
21	94-2793	Chute - Discharge (Model No. 38072) (Incl. Ref. #22)	1
*	94-2792	Chute - Discharge (Model No. 38073) (Incl. Ref. #22)	1
22	94-8079	Decal - Discharge (Model No. 38072)	1
*	94-2558	Decal - Discharge (Model No. 38073)	1
23	3256-23	Washer	3
25	37-6490	Retainer - Chute Ring	3
26	32144-70	Screw - Self Tap.	4
28	27-0220	Screw - Self Tap.	6

*Not Illustrated

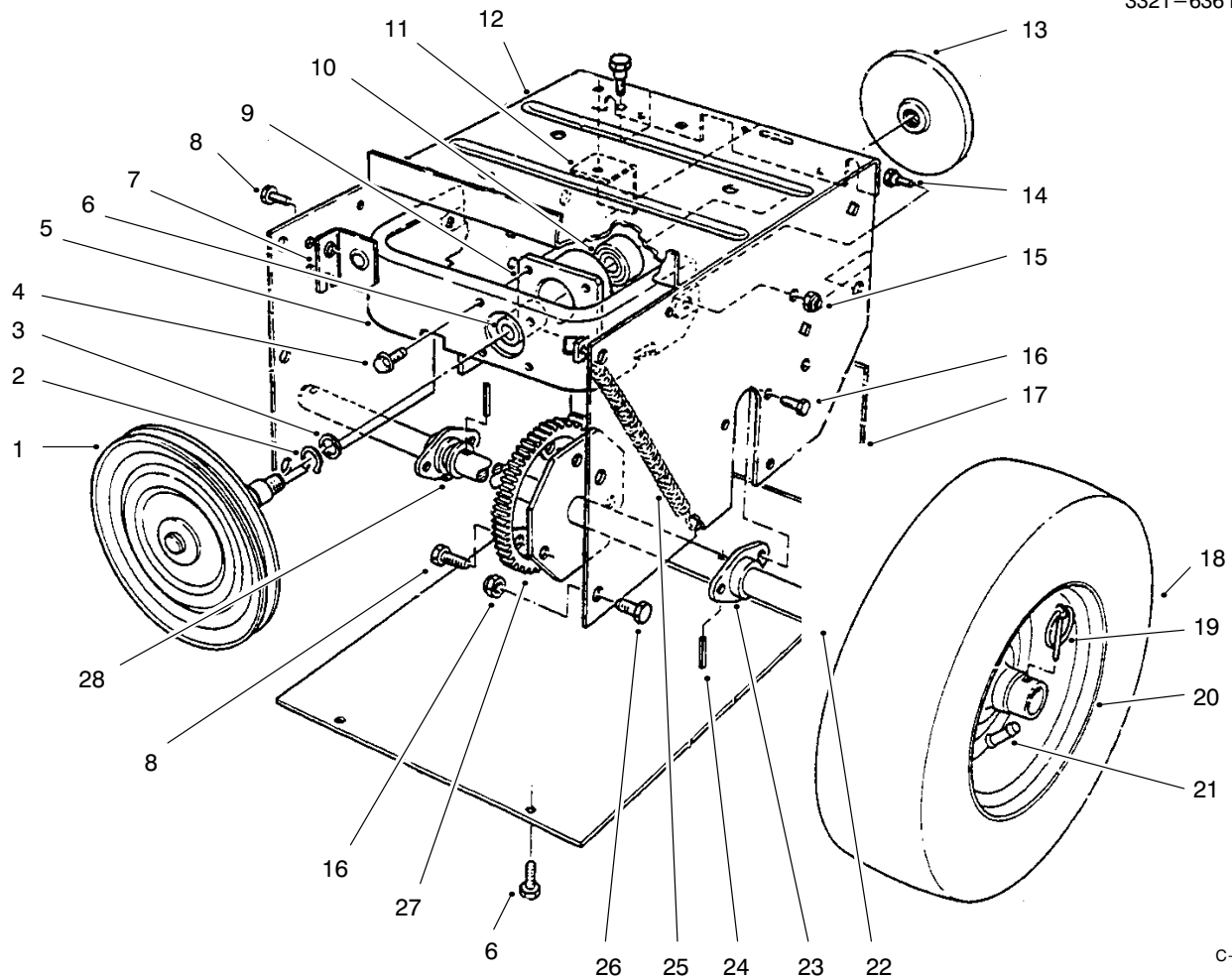


C-0031

AUGER ASSEMBLY (Continued)

Ref. No.	Part No.	Description	No. Used	Ref. No.	Part No.	Description	No. Used
29	3290-326	Pushnut	1	47	3-8664	Washer	1
30	37-8941-03	Ring - Chute	1	48	32120-72	Ring - Retaining	1
31	40-8160-01	Skid	2	49	256-32	Bushing	1
32	32128-20	Nut - Flange	4	50	252-80	Washer - Thrust	1
33	32151-36	Ring - Retaining	2	51	51-0460	Gasket	1
34	5-1550	Washer - Thrust	4	52	14-2449	Gear Case R.H. (Incl. Ref. #53 & 54)	1
35	37-6550	Bearing - Auger	2	53	256-237	Bushing	2
36	74-1420-01	Blade - Scraper	1	54	7-0045	Seal - Oil	2
37	3296-42	Nut - Lock	2	55	37-6801	Shaft - Auger	1
38	321-10	Screw	2	56	32144-41	Screw - Self Tap.	8
39	3257-33	Key - Woodruff	1	57	37-6560	Bushing - Input	1
40	14-2459	Gear Case L.H. (Incl. Ref. #53 & 54)	1	58	237-87	Seal	1
41	281-1	Pipe - Plug	1	59	3257-23	Key - Woodruff	1
42	252-71	Bearing - Thrust	2	60	3230-1	Bolt - Carriage	9
43	5-7180	Gear	1	*	37-6961	Gear Case Asm.	1
44	257-3	Washer - Thrust	1	*	12-8789	Bearing Assembly (Incl. Ref. #6-8)	1
45	252-76	Bearing - Needle, Thrust	1				
46	5-7170	Gear - Worm	1				

*Not Illustrated

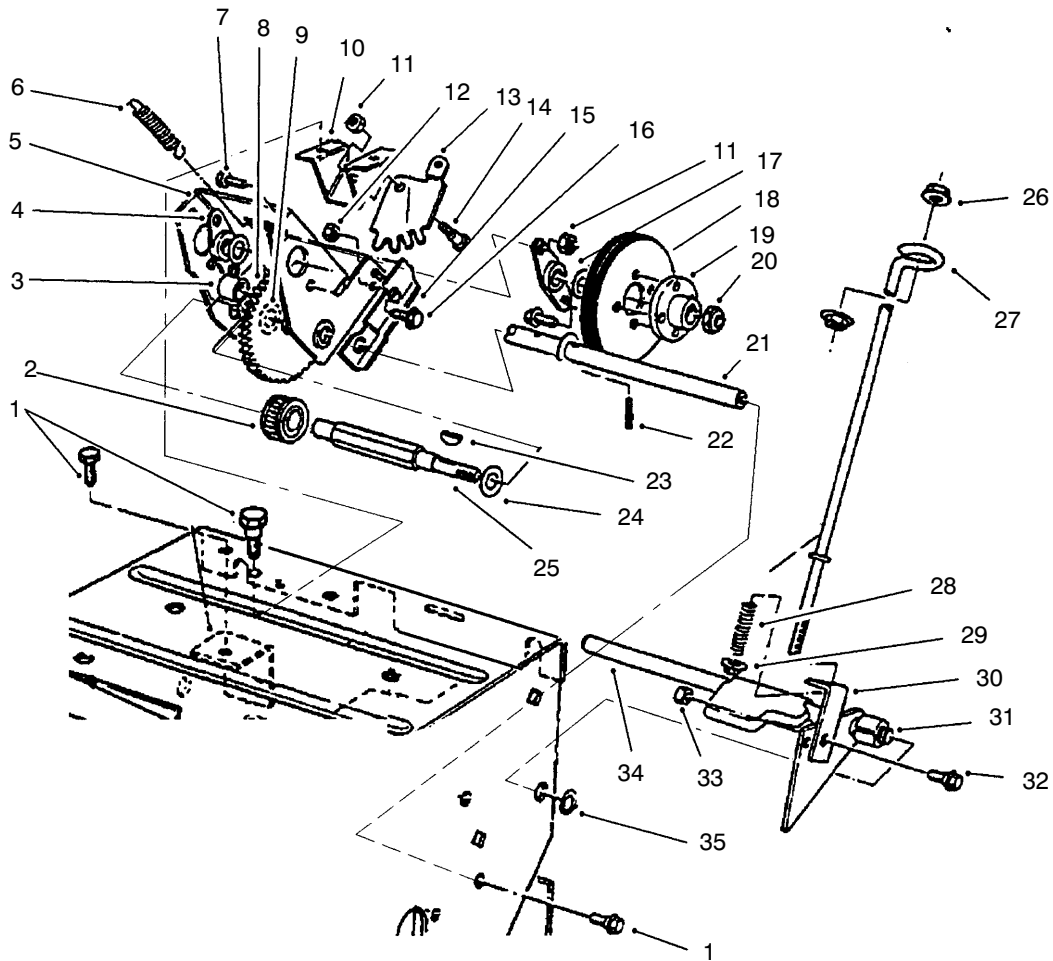


C-2371

TRACTION ASSEMBLY

Ref. No.	Part No.	Description	No. Used
1	88-0850	Pulley & Shaft	1
2	32151-103	Ring - Snap	1
3	252-80	Washer - Thrust	1
4	12-3270	Screw - Tapping	8
5	88-0550-03	Frame - Friction Plate	1
6	256-322	Bushing	1
7	66-6790	Mount - Clutch Rod Front	1
8	32144-70	Screw - Self Tap.	5
9	88-0560	Hub - Frame	1
10	38-7820	Bearing	1
11	37-9070	Mount - Clutch Rod Rear	1
12	37-8900-01	Frame - Traction	1
13	38-0800	Plate - Friction	1
14	37-8770	Bolt - Shoulder	2
15	3296-29	Nut - Lock	6

Ref. No.	Part No.	Description	No. Used
16	32144-4	Screw - Self Tap.	6
17	37-6830-01	Cover - Bottom	1
18	231-120	Tire	2
19	3290-243	Pin - Klik	2
20	241-131	Rim	2
21	232-46	Tube	2
22	74-1350	Shaft - Axle	1
23	37-6850	Bearing - Axle	2
24	32121-31	Pin - Roll	2
25	37-8870	Spring - Friction Plate Frame	1
26	322-2	Screw - Hex. Hd.	6
27	37-6520	Gear - Axle	1
28	3-8664	Washer - Thrust	2

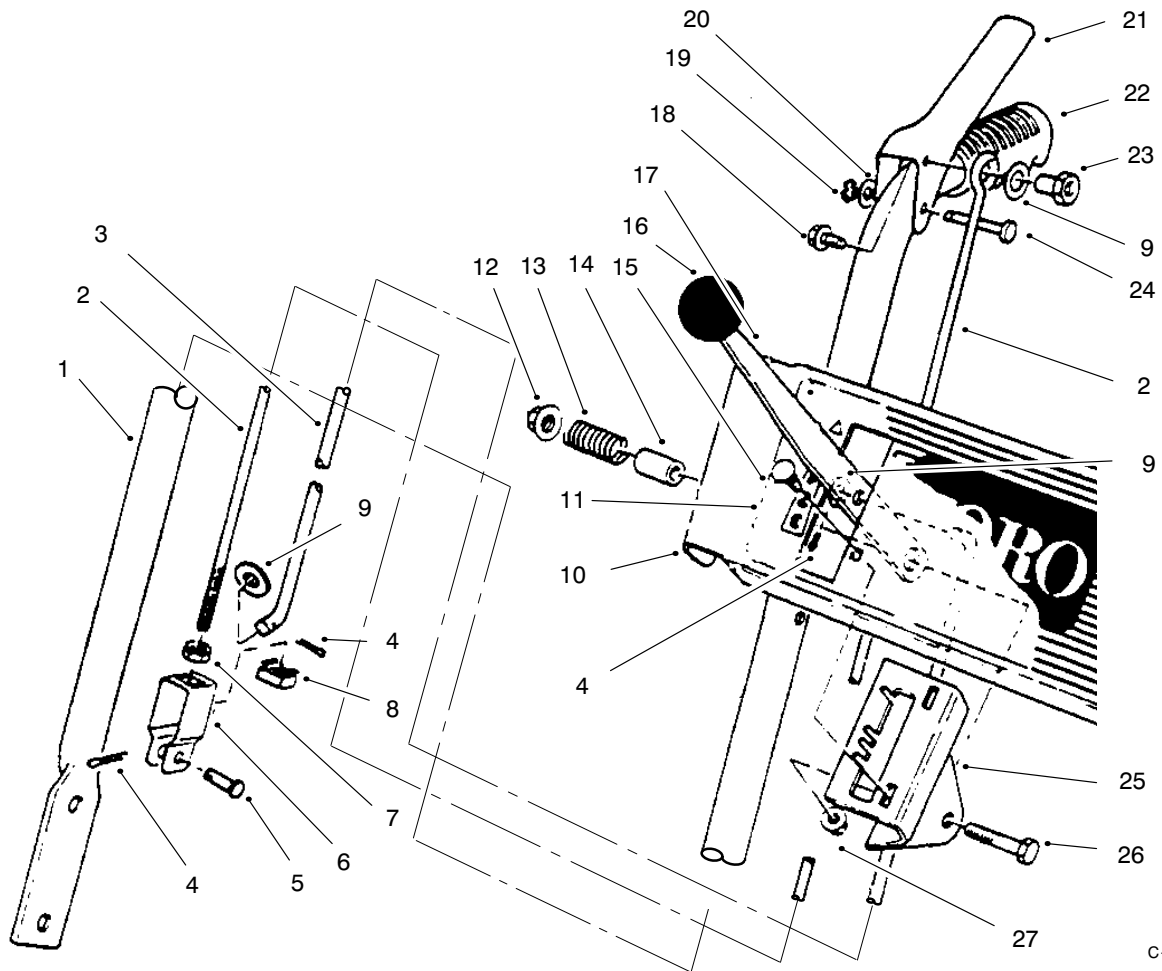


C-2372

TRACTION ASSEMBLY (Continued)

Ref. No.	Part No.	Description	No. Used
1	32144-70	Screw - Self Tap.	4
2	37-6500	Gear - Sliding	1
3	256-86	Bushing	1
4	20-1620	Bearing - Friction Wheel	2
5	39-1230	Bracket - Sliding	1
6	37-8880	Spring - Traction Engage	1
7	322-2	Screw - Hex. Hd.	4
8	37-9160	Intermediate Gear & Bushing (Incl. Ref. #3)	1
9	10-9280	Washer - Thrust	2
10	37-8790	Mount - Quadrant Gear	1
11	3296-29	Nut - Lock	1
12	3296-16	Nut - Lock	1
13	37-8801	Quadrant - Gear	1
14	37-8770	Bolt - Shoulder	1
15	39-1250	Cam - Receiver	1
16	321-4	Screw - Hex. Hd.	1
17	36-4790	Washer - Thrust	2

Ref. No.	Part No.	Description	No. Used
18	37-6570	Wheel - Friction	1
19	39-1520	Hub - Friction Wheel Mount	1
20	3296-48	Nut - Lock	1
21	37-6760	Shaft - Pivot	1
22	32121-45	Pin - Roll	2
23	3257-24	Key	1
24	5-7570	Washer - Thrust	2
25	37-6780	Shaft - Hex	1
26	32128-33	Nut - Flange	2
27	39-3060	Rod - Lower Traction	1
28	38-4520	Spring - Compression	1
29	32128-32	Nut - Flange	1
30	38-4490	Bracket - Traction	1
31	40-9680	Spacer	1
32	40-8350	Screw - Shoulder	1
33	3296-42	Nut - Lock	1
34	43-7310-03	Traction Engagement Asm.	1
35	32151-61	Ring - Retaining	1

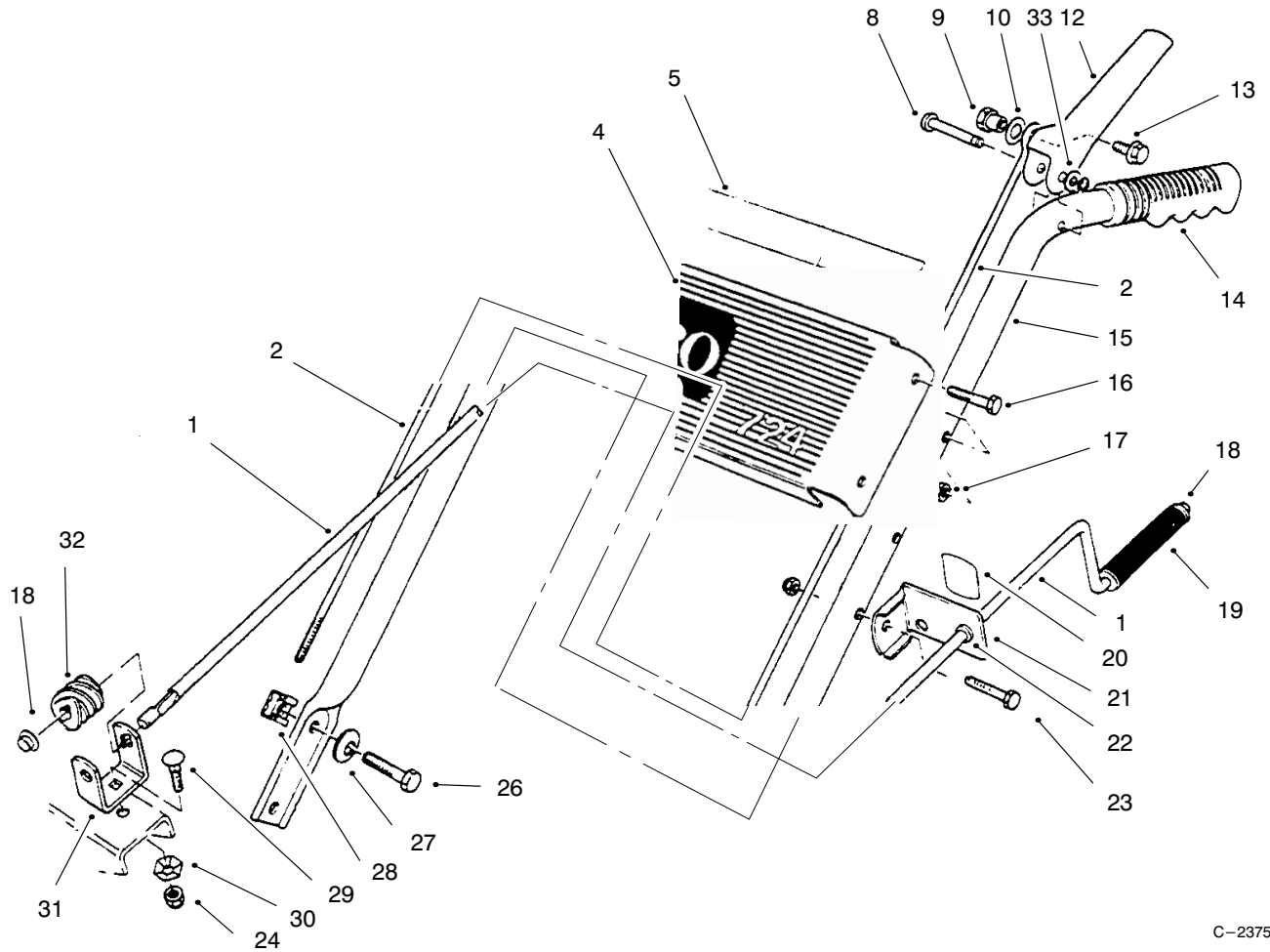


C-2373

HANDLE ASSEMBLY RIGHT SIDE

Ref. No.	Part No.	Description	No. Used
1	52-5561-03	Handle - Right	1
2	52-5590	Link - Upper	1
3	74-1490	Rod - Speed Selector	1
4	3272-4	Pin - Cotter	3
5	283-3	Pin - Clevis	1
6	39-3080	Clevis	1
7	3218-1	Nut - Jam	1
8	32115-5	Retainer - Nut	1
9	3256-23	Washer	4
10	99-5963	Panel - Escutcheon Ass'y (Model No. 38072)	1
10	99-5964	Panel - Escutcheon Ass'y (Model No. 38073)	1
11	94-9876	Decal - 724	1
12	32128-13	Nut - Flange Lock	1
13	37-9150	Spring	1

Ref. No.	Part No.	Description	No. Used
14	40-8130	Spacer - Speed Selector	1
15	3229-11	Bolt - Carriage	2
16	233-21	Knob	1
17	37-8821-03	Selector - Speed	1
18	3234-13	Screw - Hex. Flange Hd.	1
19	32151-73	Ring - Clip	1
20	3256-24	Washer	1
21	63-3640	Handle - Control	1
22	74-1360	Grip - Handle	1
23	47-4990	Post - Linkage Mounting	1
24	52-5600	Pin - Control Lever	1
25	39-1280-03	Mount - Speed Selector	1
26	322-7	Screw	1
27	32128-33	Nut - Flange Lock	2



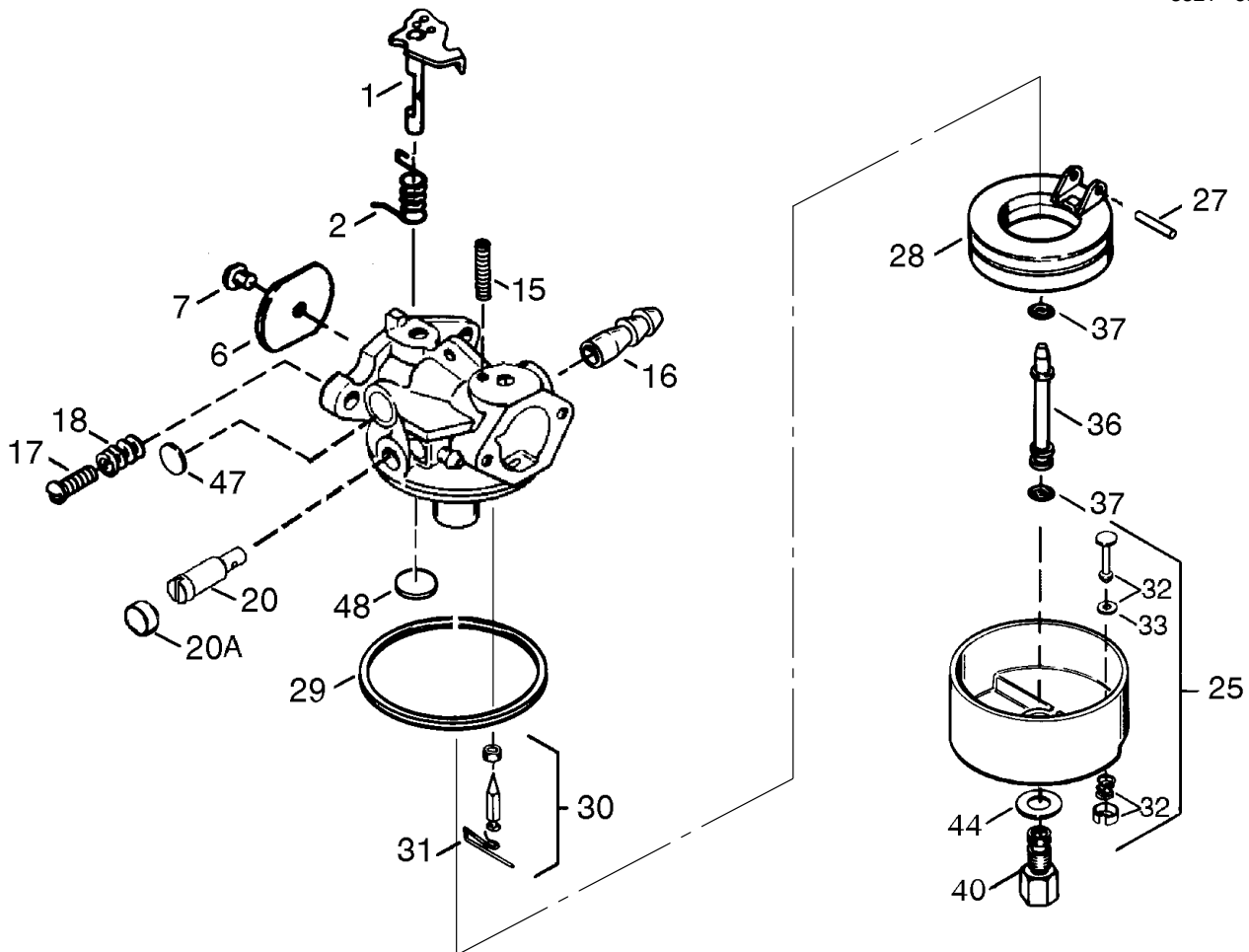
C-2375

HANDLE ASSEMBLY LEFT SIDE

Ref. No.	Part No.	Description	No. Used
1	40-8270	Rod - Chute Control	1
2	52-5590	Link - Upper	1
4		Panel - Escutcheon Ref.	
5	99-3214	Decal - Escutcheon Back (Model No. 38072)	1
*	99-3215	Decal - Escutcheon Back (Model No. 38073)	1
8	52-5600	Pin - Control Lever	1
9	47-4990	Post - Linkage Mounting	1
10	3256-24	Washer	1
12	63-3640	Handle - Control	1
13	3234-13	Screw - Hex. Flange Hd.	1
14	74-1360	Grip - Handle	1
15	52-5571-03	Handle - Left	1
16	321-9	Screw - Hex. Head	4
17	3296-42	Nut - Lock	4

Ref. No.	Part No.	Description	No. Used
18	3290-320	Nut - Push	2
19	40-8230	Grip - Rod	1
20	63-3510	Decal - Chute Direction	1
21	12-7739	Bracket - Chute Control (Incl. Ref.# 20 & 22)	1
22	256-249	Nyliner	1
23	322-7	Screw - Hex. Hd.	1
24	3296-29	Nut - Lock	2
26	322-2	Screw - Hex. Hd.	4
27	3290-456	Washer - Belleville	4
28	3290-196	Retainer - Nut	4
29	3230-22	Bolt - Carriage	1
30	3290-238	Washer - Pyramidal	1
31	40-8280	Bracket - Chute Worm	1
32	40-8250	Gear - Worm	1
33	32151-73	Klip Ring	2

*Not Illustrated



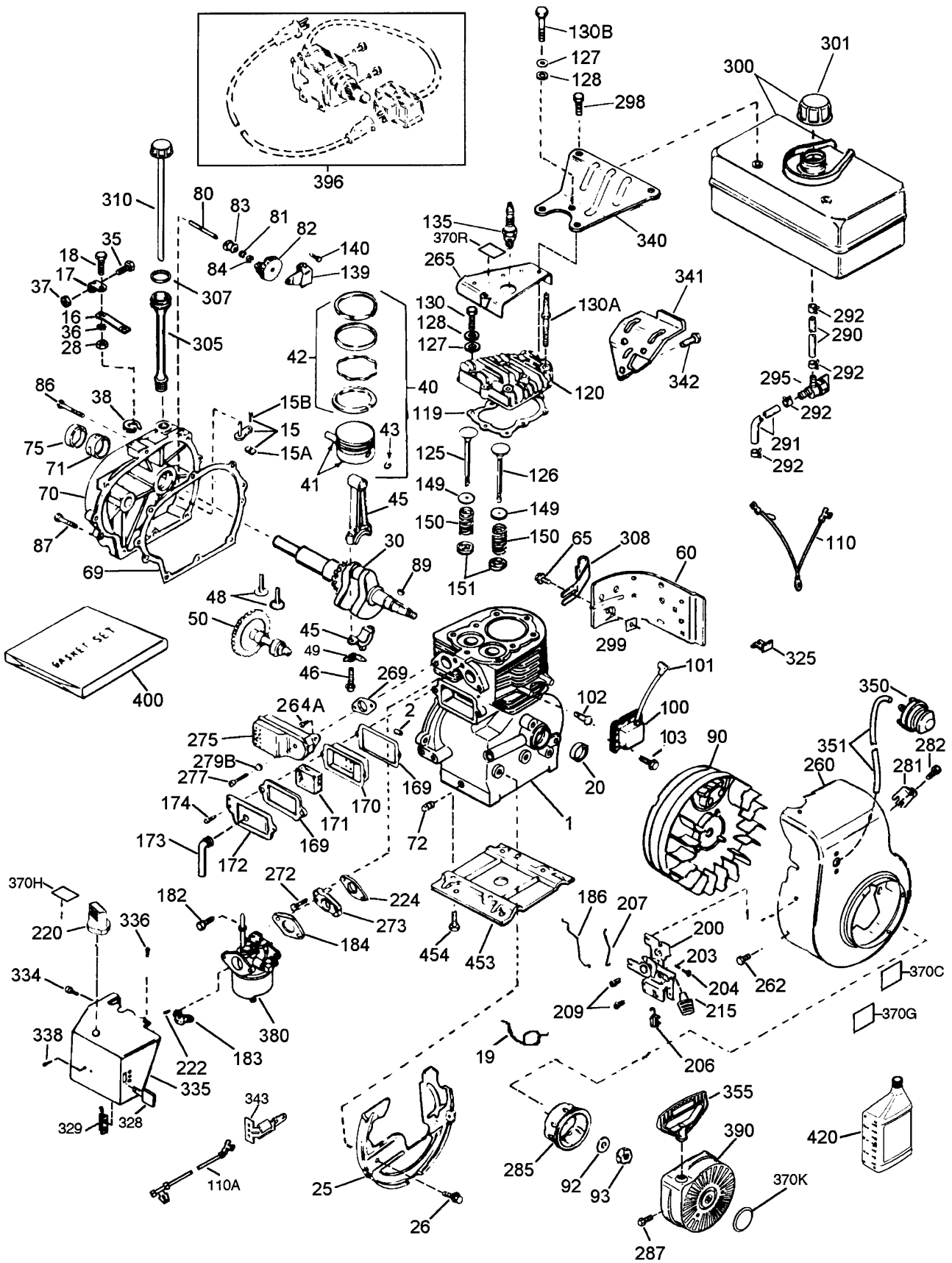
CARBURETOR NO. 640082

Ref. No.	Part No.	Description	No. Used
1	31834	Shaft & Lever Assembly	1
2	631767	Spring - Throttle Return	1
6	640070	Shutter - Throttle	1
7	650506	Screw	2
15	630735	Spring - Choke Stop	1
16	632164	Fitting - Fuel Inlet	1
17	651025	Screw - Idle	1
18	630766	Spring - Idle Screw	2
20	640018	Screw - Idle Restrictor	1
20A	640053	Screw - Idle Restrictor Cap	1
25	631951	Bowl - Assembly (Incl. Ref. #32 & 33)	1
27	631024	Shaft - Float	1
28	632019	Float - Carburetor	1
29	631028	Gasket - Bowl-to-Body	1

Ref. No.	Part No.	Description	No. Used
30	631021	Inlet Needle - Seat & Clip (Incl. Ref. #31)	1
31	631022	Clip - Inlet Needle	1
32	27136A	Drain Assembly - Bowl)	1
33	27554	Gasket - Bow Drain	1
36	632735	Tube - Main Nozzle	1
37	632547	O-Ring - Main Nozzle Tube	1
40	640089	Nut - High Speed Bowl	1
44	27110	Washer - Bowl Nut	1
47	630748	Welch Plug - Idle Mix Well	1
48	631027	Welch Plug - Atmospheric Vent	1
*	640082	Carburetor (Incl. Ref. #1-48)	1

Note: Order individual parts from your local Tecumseh dealer.
* Not Illustrated

ENGINE TECUMSEH MODEL HSK70-130302U



ENGINE TECUMSEH MODEL HSK70-130302U

Ref. No.	Part No.	Description	No. Used	Ref. No.	Part No.	Description	No. Used
1	32586C	Cylinder (Incl. Ref. #2,20 & 72)	1	90	611085	Flywheel	1
2	27652	Dowel Pin	2	92	650815	Belleville Washer	1
15	30699C	Governor Rod (Incl. Ref. #15A & 15B)	1	93	8116	Flywheel Nut	1
15A	30700	Governor Yoke	1	100	34443B	Solid State Ignition	1
15B	650494	Screw	1	101	610118	Spark Plug Cover	1
16	33454	Governor Lever	1	102	651024	Solid State Mounting Stud	2
17	29916	Governor Lever Clamp	1	103	651007	Screw, Torx T-15	2
18	651028	Screw	1	110	35253	Ground Wire	1
19	34663	Speed Control Spring	1	110A	37047	Ground Wire	1
20	32630	Oil Seal	1	*119	36453	Cylinder Head Gasket	1PK
25	36460	Blower Housing Baffle	1	120	36446	Cylinder Head (Incl. 3 of 131)	1
26	650561	Screw	2	125	27878A	Exhaust Valve (Std.) (Incl. Ref. #151)	1
28	30322	Lock Nut	1	125	27880A	Exhaust Valve (1/32" OS) (Incl. Ref. #151)	1
30	35272	Crankshaft	1	126	32784	Intake Valve (1/32" OS) (Incl. Ref. #151)	1
35	29826	Screw	1	126	32783	Intake Valve (Std.) (Incl. Ref. #151)	1
36	29918	Lock Washer	1	127	650691	Washer	3
37	29216	Lock Nut	1	128	650690	Belleville Washer	3
38	29642	Retaining Ring	1	130	650697A	Screw	2
40	34517	Piston, Pin & Ring Set (.010" OS)	1	130A	650697A	Screw	3
40	34518	Piston, Pin & Ring Set (.020" OS)	1	130B	650697A	Screw	3
40	34519	Piston, Pin & Ring Set (Std.)	1	135	35395	Resistor Spark Plug (RJ19LM)	1
41	32592B	Piston & Pin Ass'y (.010" OS) (Incl. Ref. #43)	1	139	31843A	Governor Gear Bracket	1
41	32593B	Piston & Pin Ass'y (.020" OS) (Incl. Ref. #43)	1	140	650965	Screw, Torx T-25	2
41	32594B	Piston & Pin Ass'y (Std.) (Incl. Ref. #43)	1	149	27882	Valve Spring Cap	2
42	34595	Ring Set (Std.)	1	150	27881	Valve Spring	2
42	34596	Ring Set (.020" OS)	1	151	32581	Valve Spring Keeper	2
42	34597	Ring Set (.010" OS)	1	*169	27896A	Valve Cover Gasket	2PK
43	27888	Piston Pin Retaining Ring	2	170	28423	Breather Body	1
45	32591C	Connecting Rod Ass'y (Incl. Ref. #46 & 49)	1	171	28424	Breather Element	1
46	650662C	Connecting Rod Bolt	2	172	28425	Valve Cover	1
48	34034	Valve Lifter	2	173	35350	Breather Tube	1
49	34242	Oil Dipper	1	174	650128	Screw	2
50	32115	Camshaft (MCR)	1	182	650517	Screw	2
60	30622A	Blower Housing Extension	1	183	32398	Choke Bracket	1
65	650128	Screw	1	*184	31688A	Carburetor To Intake Pipe Gasket	1PK
69	30684	Cylinder Cover Gasket	1PK	186	34661	Governor Link	1
*70	31303C	Cylinder Cover (Incl. Ref. #71, 75, & 80)	1	200	34677	Control Bracket (Incl. Ref. #203, 204, & 206)	1
71	31546	Crankshaft Bushing	1	203	31342	Compression Spring	1
72	27642	Oil Drain Plug	2	204	651029	Screw	1
75	28427	Oil Seal	1	206	610973	Terminal	1
80	31845	Governor Shaft	1	207	34662	Throttle Link	1
81	30590A	Washer	1	209	650821	Screw	2
82	30591	Governor Gear Ass'y	1	215	35440	Control Knob	1
83	30588A	Governor Spool	1	220	35439	Control Knob	1
84	29193	Retaining Ring	1	222	28820	Screw	2
86	650488	Screw	7	*224	27915A	Intake Pipe Gasket	1PK
87	650493	Screw	1	260	36254	Blower Housing	1
89	32589	Flywheel Key	1	262	29747B	Screw, Torx T-40	2
				264A	30196	Screw	1
				265	30939A	Cylinder Head Cover	1
				269	35865	Exhaust Gasket	1
				272	30196	Screw	2

Note: Order individual parts from your local Tecumseh dealer.

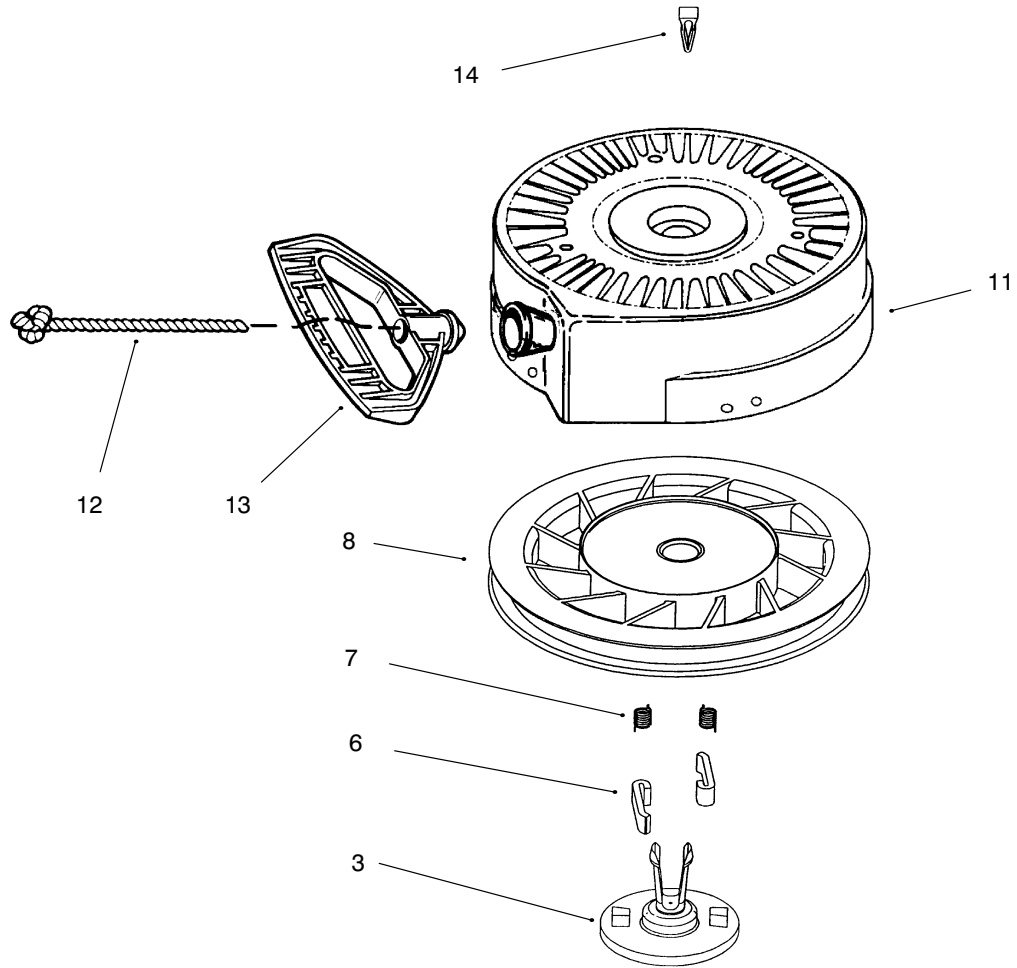
*Included in Gasket Set Ref. #400.

ENGINE TECUMSEH MODEL HSK70-130302U

Ref. No.	Part No.	Description	No. Used	Ref. No.	Part No.	Description	No. Used
273	34712	Carburetor Flange	1	336	650765	Screw	1
275	32401	Muffler	1	338	650760	Screw	1
277	650694A	Screw	1	340	34159	Fuel Tank Bracket	1
279B	26073	Washer	1	341	34158	Fuel Tank Bracket	1
281	33013	Starter Bubble Cover	1	342	650561	Screw	1
282	650760	Screw	1	343	35079	Key Switch Bracket	1
285	35287A	Starter Cup	1	350	570682A	Primer Ass'y	1
287	650926	Screw	3	351	32180C	Primer Line	1
290	29774	Fuel Line	1	355	590574	Starter Handle	1
291	30962	Fule Line	1	370C	36501	Primer Decal	1
292	26460	Fuel Line Clamp	4	370G	35063	Instruction Decal	1
295	35857	Fuel Shut-Off Valve	1	370H	34418	Choke Decal	1
298	650665	Screw	2	370K	36695	Starter Decal	1
299	650764	"U" Type Nut	1	370R	37119	Warning Decal	1
300	34186A	Fuel Tank (Incl. Ref. #292 & 301)	1	380	640082	Carburetor (Incl. Ref. #184)	1
301	36246	Fuel Cap	1	390	590742	Rewind Starter	1
305	35554	Oil Fill Tube	1	396	33328D	Electric Starter Motor (Optional)	1
307	35499	"O" Ring	1	400	364454	Gasket Set	1
308	35540	Fill Tube Clip	1	420	730225	Sae 30 4-Cycle Engine Oil (Quart)	1
310	36205	Dipstick	1	453	29538	Engine Mounting Base	1
325	29443	Wire Clip	1	454	650542	Screw	4
329	610973	Terminal	1				
334	650257	Screw	2				
335	35060	Carburetor Cover	1				

Note: Order individual parts from your local Tecumseh dealer.

*Included in Gasket Set Ref. #400.

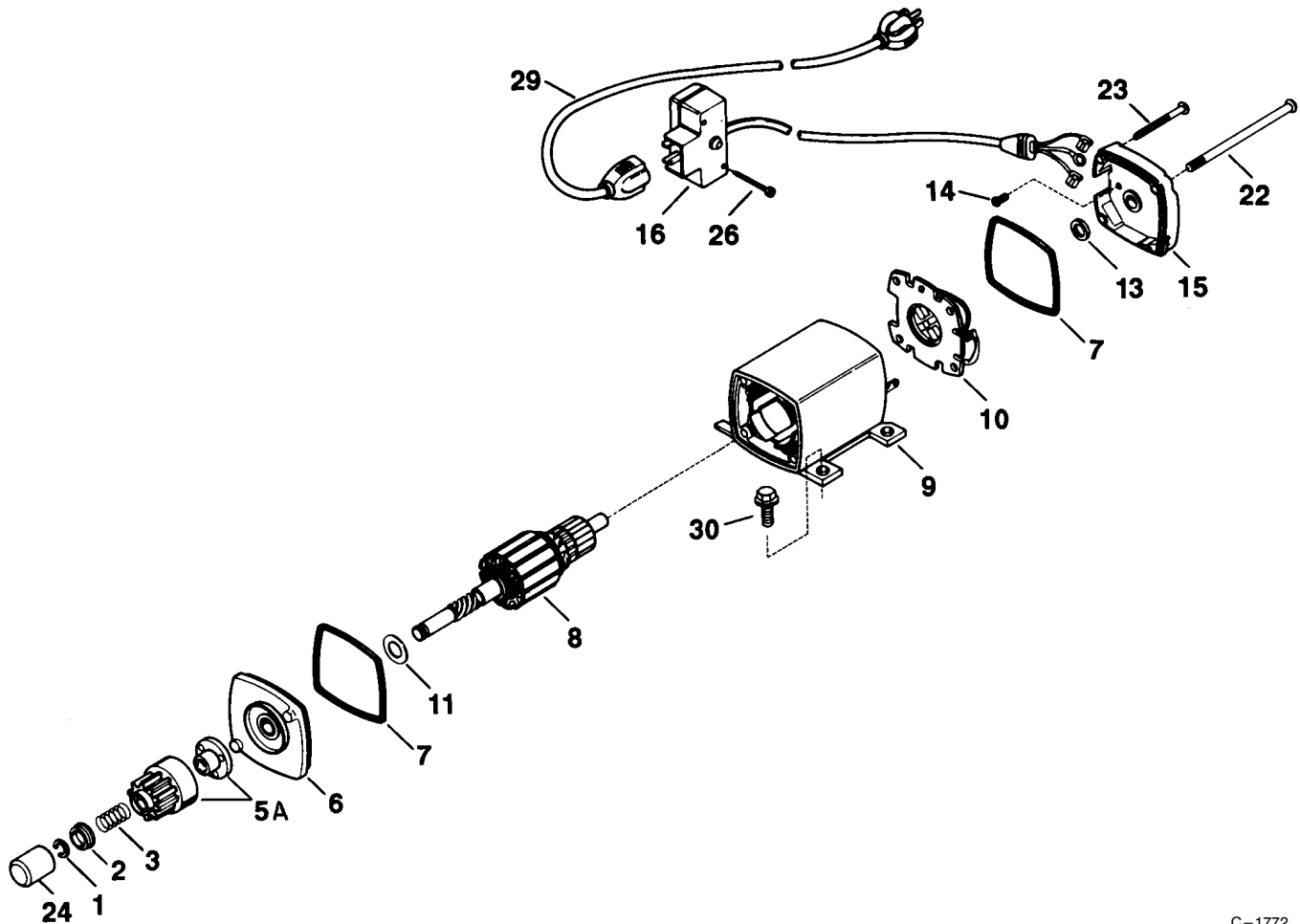


RECOIL STARTER NO. 590742

Ref. No.	Part No.	Description	No. Used
3	590740	Retainer	1
6	590616	Starter Dog	2
7	590617	Dog Spring	2
8	590645A	Pulley & Rewind Spring Asm.	1

Ref. No.	Part No.	Description	No. Used
11	590647	Starter Housing Asm.	1
12	590535	Starter Rope	1
13	590574	Mitten Grip Handle	1
14	590741	Locking Tab	1

Note: Order individual parts from your local Tecumseh dealer.



C-1772

ELECTRIC STARTER KIT NO. 38-7590 (OPTIONAL)

Ref. No.	Part No.	Description	No. Used
1	33842	Ring - Retainer	1
2	33430	Retainer - Spring	1
3	33431	Spring - Anti-Drift	1
5A	35913	Gear & Nut (Incl. Ref. #1)	1
6	35449	Cap Assembly - Drive End (Incl. Ref. #7)	1
7	35450	"O" Ring	2
8	35914	Armature	1
9	35457A	Housing Assembly	1
10	35452A	Card Assembly - Brush	1
11	35911	Washer - Thrust	1
13	590500	Washer - Thrust	1

Ref. No.	Part No.	Description	No. Used
14	33441	Screw - Ground	1
15	35453	Cap Assy., Commutator End (Incl. Ref. #7)	1
16	35454	Box Assembly - Switch (Incl. Ref. #26)	1
22	35458	Bolt - Case	2
23	35456	Screw - Grounding	1
24	33451	Cover - Dust	1
26	650819	Screw - Hex. Hd.	2
29	32450B	Cord - Extension, 10' 6"	1
30	30063	Screw - Hex. Hd.	4
*	730623	Switch Repair Kit	1

Note: Order individual parts from your local Tecumseh dealer.

TORO PART NUMBER INDEX

Part No.	Description	Pg. No.	Ref. No.	Qty.	Part No.	Description	Pg. No.	Ref. No.	Qty.
3-0737	Washer	3	14	1	43-7310-03	Traction Engagement Asm.	6	34	1
3-4244	Idler Pulley	1	6	1	47-4990	Post - Linkage Mounting	8	9	1
3-8664	Washer	4	47	1	47-4990	Post - Linkage Mounting	7	23	1
3-8664	Washer - Thrust	5	28	2	51-0460	Gasket	4	51	1
5-1550	Washer - Thrust	4	34	4	52-5561-03	Handle - Right	7	1	1
5-7170	Gear - Worm	4	46	1	52-5571-03	Handle - Left	8	15	1
5-7180	Gear	4	43	1	52-5590	Link - Upper	7	2	1
5-7570	Washer - Thrust	6	24	2	52-5590	Link - Upper	8	2	1
7-0045	Seal - Oil	4	54	2	52-5600	Pin - Control Lever	8	8	1
10-9280	Washer - Thrust	6	9	2	52-5600	Pin - Control Lever	7	24	1
12-3270	Screw - Tapping	5	4	8	53-7570	Spring - Auger Disengage	1	10	1
12-7739	Bracket - Chute Control	8	21	1	53-7670	Decal - Auger Warning	3	3	1
12-8789	Bearing Assembly	4	*	1	55-8950	Plate - Friction	3	12	2
14-2449	Gear Case R.H.	4	52	1	56-2670	Chute - Wire	3	20	1
14-2459	Gear Case L.H.	4	40	1	56-2680	Deflector	3	18	1
14-7959	Auger Clutch	1	11	1	63-3450	Bearing - Ball	3	7	1
20-1620	Bearing - Friction Wheel	6	4	2	63-3510	Decal - Chute Direction	8	20	1
20-4320	Washer - Rubber	3	13	2	63-3640	Handle - Control	8	12	1
26-6110	Flange - Bearing Rear	3	8	1	63-3640	Handle - Control	7	21	1
26-6120	Flange - Bearing Front	3	6	1	66-6790	Mount - Clutch Rod Front	5	7	1
26-9672	V-Belt - Auger	2	29	1	66-8060	Molded Brake Asm.	1	4	1
27-0220	Screw - Self Tap.	3	28	6	74-1350	Shaft - Axle	5	22	1
36-4790	Washer - Thrust	6	17	2	74-1360	Grip - Handle	8	14	1
37-6490	Retainer - Chute Ring	3	25	3	74-1360	Grip - Handle	7	22	1
37-6500	Gear - Sliding	6	2	1	74-1370	Engine Pulley	1	3	1
37-6520	Gear - Axle	5	27	1	74-1420-01	Blade - Scraper	4	36	1
37-6550	Bearing - Auger	4	35	2	74-1490	Rod - Speed Selector	7	3	1
37-6560	Bushing - Input	4	57	1	74-1590	Auger - L.H.	3	*	1
37-6570	Wheel - Friction	6	18	1	74-1600-03	Auger - R.H.	3	2	1
37-6760	Shaft - Pivot	6	21	1	88-0550-03	Frame - Friction Plate	5	5	1
37-6780	Shaft - Hex	6	25	1	88-0560	Hub - Frame	5	9	1
37-6801	Shaft - Auger	4	55	1	88-0850	Pulley & Shaft	5	1	1
37-6830-01	Cover - Bottom	5	17	1	94-2558	Decal - Discharge	3	*	1
37-6850	Bearing - Axle	5	23	2	94-2568	Decal - Auger Warning	3	*	1
37-6890	Pulley	3	16	1	94-2785	Housing - Auger	3	*	1
37-6961	Gear Case Asm.	4	*	1	94-2786	Housing - Auger	3	1	1
37-6900	Cover - Belt	1	1	1	94-2792	Chute - Discharge	3	*	1
37-6990-03	Shaft & Impeller	3	4	1	94-2793	Chute - Discharge	3	21	1
37-8770	Bolt - Shoulder	5	14	2	94-8079	Decal - Discharge	3	22	1
37-8770	Bolt - Shoulder	6	14	1	94-9876	Decal - 724	7	11	1
37-8790	Mount - Quadrant Gear	6	10	1	99-3214	Decal - Escutcheon Back	8	5	1
37-8801	Quadrant - Gear	6	13	1	99-3215	Decal - Escutcheon Back	8	*	1
37-8821-03	Selector - Speed	7	17	1	99-5963	Panel - Escutcheon Ass'y	7	10	1
37-8870	Spring - Friction Plate Frame	5	25	1	99-5964	Panel - Escutcheon Ass'y	7	10	1
37-8880	Spring - Traction Engage	6	6	1	127-19	Guard - Muffler	2	33	1
37-8900-01	Frame - Traction	5	12	1	231-120	Tire	5	18	2
37-8941-03	Ring - Chute	4	30	1	232-46	Tube	5	21	2
37-9070	Mount - Clutch Rod Rear	5	11	1	233-21	Knob	7	16	1
37-9090	V-Belt - Traction	2	28	1	237-87	Seal	4	58	1
37-9150	Spring	7	13	1	241-131	Rim	5	20	2
37-9160	Intermediate Gear	6	8	1	252-71	Bearing - Thrust	4	42	2
38-0800	Plate - Friction	5	13	1	252-76	Bearing - Needle, Thrust	4	45	1
38-4490	Bracket - Traction	6	30	1	252-80	Washer - Thrust	5	3	1
38-4520	Spring - Compression	6	28	1	252-80	Washer - Thrust	4	50	1
38-7820	Bearing	5	10	1	256-32	Bushing	4	49	1
39-1230	Bracket - Sliding	6	5	1	256-86	Bushing	6	3	1
39-1250	Cam - Receiver	6	15	1	256-237	Bushing	4	53	2
39-1280-03	Mount - Speed Selector	7	25	1	256-249	Nyliner	8	22	1
39-1520	Hub - Friction	6	19	1	256-322	Bushing	5	6	1
39-3060	Rod - Lower Traction	6	27	1	257-3	Washer - Thrust	4	44	1
39-3080	Clevis	7	6	1	281-1	Pipe - Plug	4	41	1
40-8130	Spacer - Speed Selector	7	14	1	283-3	Pin - Clevis	7	5	1
40-8160-01	Skid	4	31	2	288-2	Cap	1	21	1
40-8230	Grip - Rod	8	19	1	289-9	Pipe Nipple	1	20	1
40-8250	Gear - Worm	8	32	1	321-4	Screw - Hex. Hd.	6	16	1
40-8270	Rod - Chute Control	8	1	1	321-9	Screw - Hex. Head	8	16	4
40-8280	Bracket - Chute Worm	8	31	1	321-10	Screw	4	38	2
40-8350	Screw - Shoulder	6	32	1	322-2	Screw - Hex. Hd.	6	7	4
40-9680	Spacer	6	31	1	322-2	Screw - Hex. Hd.	5	26	6
42-671	Screw	2	30	3	322-2	Screw - Hex. Hd.	8	26	4
42-3560	Bolt - Shoulder	1	13	1	322-4	Screw	1	24	4
43-7290	Screw - Special	1	2	1	322-7	Screw	7	26	1

*Not Illustrated

TORO PART NUMBER INDEX (Cont.)

Part No.	Description	Pg. Ref.			Part No.	Description	Pg. Ref.		
		No.	No.	Qty.			No.	No.	Qty.
322-7	Screw - Hex. Hd.	8	23	1	3296-29	Nut - Lock	1	22	4
323-29	Screw	1	12	1	3296-29	Nut - Lock	8	24	2
3210-3	Screw	2	27	1	3296-29	Nut - Lock	3	9	13
3218-1	Nut - Jam	7	7	1	3296-42	Nut - Lock	8	17	4
3229-11	Bolt - Carriage	7	15	2	3296-42	Nut - Lock	6	33	1
3230-1	Bolt - Carriage	4	60	9	3296-42	Nut - Lock	4	37	2
3230-18	Bolt - Carriage	3	5	6	3296-48	Nut - Lock	6	20	1
3230-22	Bolt - Carriage	3	19	2	3296-56	Nut - Lock	1	9	1
3230-22	Bolt - Carriage	8	29	1	3296-59	Nut - Lock	1	5	1
3234-13	Screw - Hex. Flange Hd.	8	13	1	32115-5	Retainer - Nut	7	8	1
3234-13	Screw - Hex. Flange Hd.	7	18	1	32120-72	Ring - Retaining	4	48	1
3242-4	Screw - Set	3	17	2	32121-31	Pin - Roll	5	24	2
3253-17	Washer - Lock	2	31	3	32121-45	Pin - Roll	6	22	2
3255-8	Washer - Lock Ext. Tooth	1	26	1	32128-13	Nut - Flange Lock	7	12	1
3256-23	Washer	7	9	4	32128-20	Nut - Flange	4	32	4
3256-23	Washer	3	23	3	32128-32	Nut - Flange	6	29	1
3256-23	Washer - Flat	1	23	5	32128-33	Nut - Flange	6	26	2
3256-24	Washer	8	10	1	32128-33	Nut - Flange Lock	7	27	2
3256-24	Washer	7	20	1	32144-4	Screw - Self Tap.	5	16	6
3256-24	Washer - Flat	1	8	1	32144-4	Screw - Self Tap.	1	19	2
3256-49	Washer - Flat	2	32	3	32144-41	Screw - Self Tap.	4	56	8
3256-68	Washer - Flat	3	11	2	32144-70	Screw - Self Tap.	3	26	4
3257-23	Key	3	15	1	32144-70	Screw - Self Tap.	6	1	4
3257-23	Key - Woodruff	4	59	1	32144-70	Screw - Self Tap.	5	8	5
3257-24	Key	6	23	1	32151-36	Ring - Retaining	4	33	2
3257-33	Key - Woodruff	4	39	1	32151-61	Ring - Retaining	6	35	1
3272-4	Pin - Cotter	7	4	3	32151-73	Klip Ring	8	33	2
3290-196	Retainer - Nut	8	28	4	32151-73	Ring - Clip	7	19	1
3290-238	Washer - Pyramidal	8	30	1	32151-103	Ring - Snap	5	2	1
3290-243	Pin - Klik	5	19	2					
3290-320	Nut - Push	8	18	2					
3290-320	Nut - Push On	1	7	1					
3290-326	Pushnut	4	29	1					
3290-456	Washer - Belleville	3	10	2					
3290-456	Washer - Belleville	8	27	4					
3296-16	Nut - Lock	6	12	1					
3296-29	Nut - Lock	6	11	1					
3296-29	Nut - Lock	5	15	6					

OPTIONAL EQUIPMENT

110 Vac Electric Starter Kit	38037
Tire Chain Kit	56-2700
Drift Breaker Kit	37-7021
Snow Cab	88-0600

