



Count on it.

Parts Catalog

720 Series Golf Sprinklers

Model No. 720 SERIES



Ordering Replacement Parts

To order replacement parts, please supply the part number, the quantity, and the description of each part desired.

Understanding Reference Numbers

Each identified part in an illustration has a reference number. The reference number for a part also appears in the parts list, along with other information about the part.

This catalog uses two special reference number formats, one to indicate parts in a service assembly and another to indicate the quantity of a given part in an illustration.

Service Assembly Reference Numbers

Parts in service assemblies have reference numbers in the form a:b. The a represents the reference number of the entire service assembly and the b represents a sequential number unique to each part within the service assembly.

For example, a wheel assembly might be identified by reference number 6, the tire by 6:1, the valve by 6:2, and the wheel by 6:3. When you order the assembly identified by reference number 6, you receive all parts identified by reference numbers 6:1, 6:2, and 6:3. However, you may also order any part individually. Reference numbers of this type appear in illustration and in parts lists.

Reference Numbers Indicating Quantity

In an illustration, if a reference number indicates more than one part, the reference number has the form nX y. The n represents the quantity of the part, the X is the multiplication symbol, and the y represents the reference number.

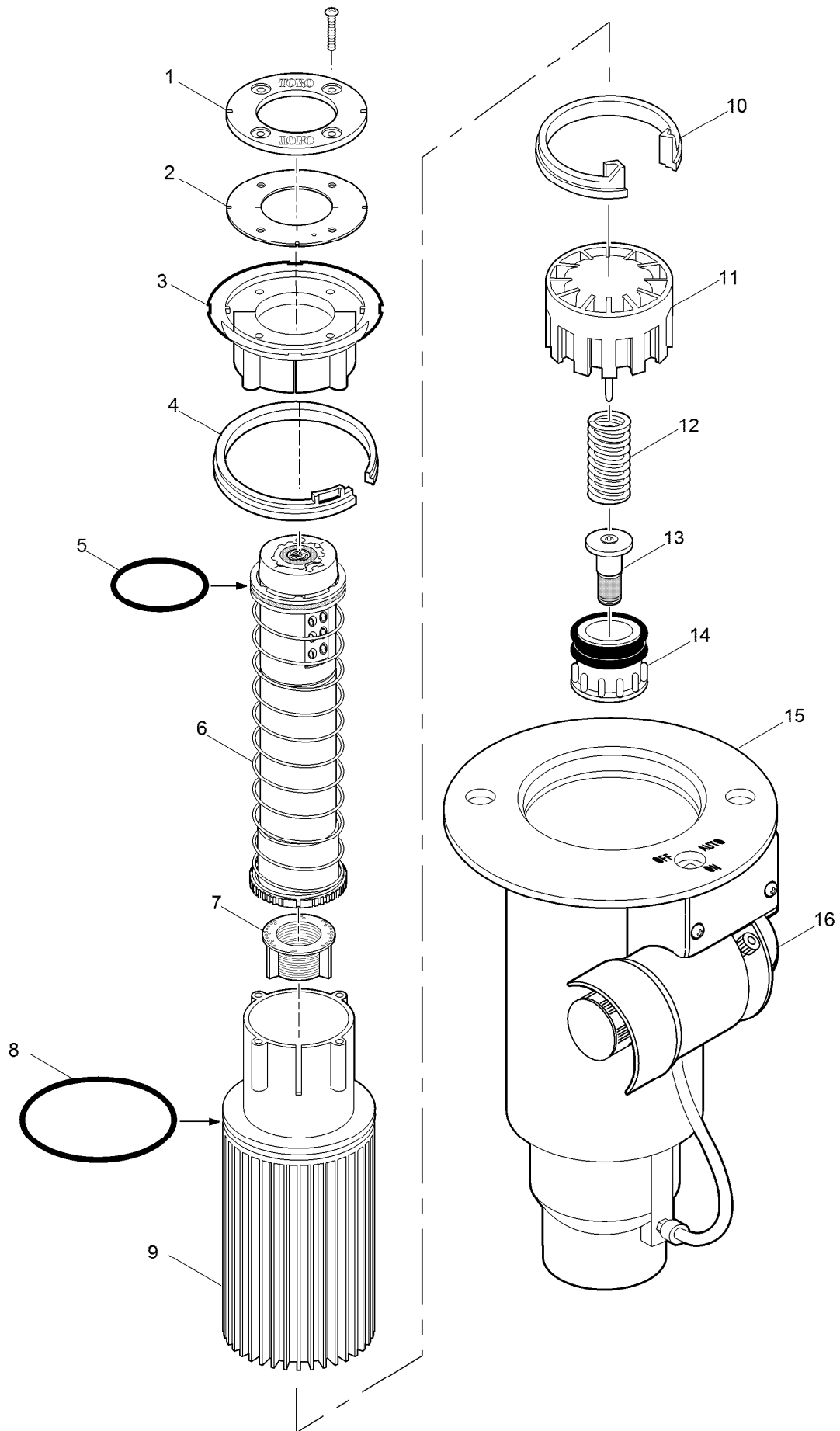
For example, in an illustration, the reference number 2X 37 means that two of the parts identified by reference number 37 are indicated.

Contents

720 Series Sprinkler..... 4

720 Series Conversion Assembly 6

720 Series Sprinkler

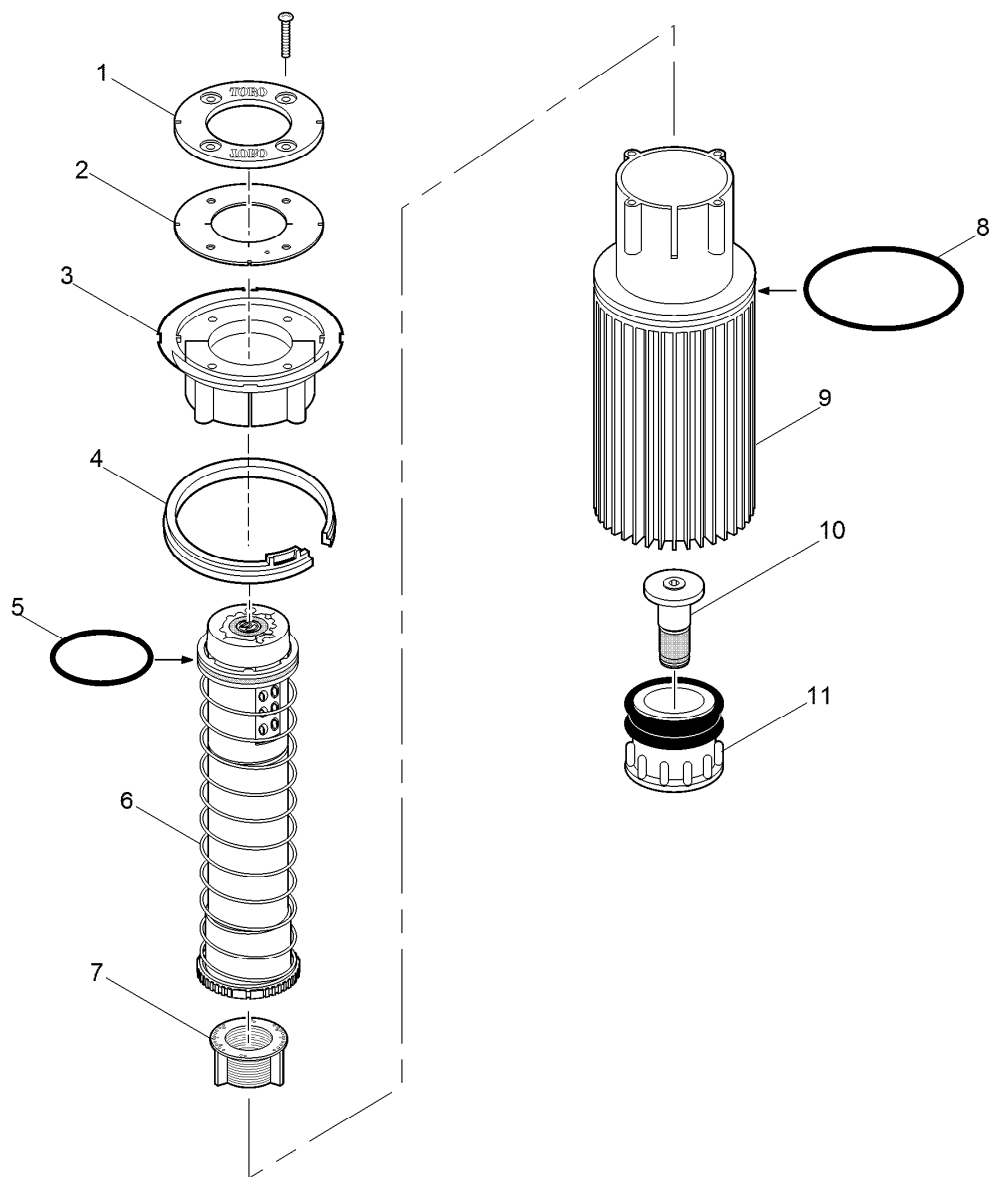


720 Series Sprinkler (continued)

<i>Ref.</i>	<i>Part Number</i>	<i>Qty.</i>	<i>Description</i>	<i>Ref.</i>	<i>Part Number</i>	<i>Qty.</i>	<i>Description</i>
1	102-0257	1	Retainer, Debris Seal	12	3-2633	1	Spring, Valve, No, EI & NC
1	102-0258	1	Retainer, Debris Seal, Effluent	13	102-0081	1	Piston Assy., EI, Low Flow (Includes Item 14)
2	102-5385	1	Seal, Debris	14	35-9646	1	Filter Assy., Metering, EI, NC
3	89-9446	1	Support, Riser, Ribbed Body	15		1	Body Assy. (See Golf Sprinkler Body Assembly) ▲
4	89-1385	1	Snap Ring, Riser	16		1	Pilot Valve Assy. (See Pilot Valve Assembly.) ▲
5	363-4195	1	O-Ring, 0.070" X 1.864" X 2.004", Buna		995-15		Selector Tool (Flag Key) ●■
6	89-9725	1	Riser Assembly, Part Circle (Includes Items 5, 6 And 7)		995-100		Valve Snap Ring Pliers With Screen Remover ●■
6	89-9726	1	Riser Assembly, Full Circle (Includes Items 5, 6 And 7)		995-08		Valve Removal Tool ●■
7	89-9428	1	Screen		995-76		Valve Insertion Tool ●■
8	363-4102	1	O-Ring, Paraffin As-568 232		995-83		Multi-Purpose Tool ●■
9	89-9443	1	Sleeve, Riser		89-7350		Adjustment Key ●■
10	89-4702	1	Snap Ring, Valve				
11	9-1487	1	Cylinder Assy., EI & NC				

● SERVICE TOOLS
▲ Not serviced separately

■ Not illustrated



720 Series Conversion Assembly

Ref.	Part Number	Qty.	Description
1	102-0257	1	Retainer, Debris Seal
1	102-0258	1	Retainer, Debris Seal, Effluent
2	102-5385	1	Seal, Debris
3	89-9446	1	Support, Riser, Ribbed Body
4	89-1385	1	Snap Ring, Riser
5	363-4195	1	O-Ring, 0.070" X 1.864" X 2.004", Buna
6	89-9725	1	Riser Assembly, Part Circle (Includes Items 5, 6 And 7.)
6	89-9726	1	Riser Assembly, Full Circle (Includes Items 5, 6 And 7.)
7	89-9428	1	Screen
8	363-4102	1	O-Ring, Paraffin As-568 232
9	89-9443	1	Sleeve, Riser
10	35-9646	1	Filter Assy., Metering, EI, NC
11	102-0081	1	Piston Assy., EI, Low Flow (Includes Item 10)

Notes:



Count on it.