



Count on it.

Form No. 380-0019 Rev B

Parts Catalog

650 Series Golf Sprinkler

Model No. 650 SERIES



Ordering Replacement Parts

To order replacement parts, please supply the part number, the quantity, and the description of each part desired.

Understanding Reference Numbers

Each identified part in an illustration has a reference number. The reference number for a part also appears in the parts list, along with other information about the part.

This catalog uses two special reference number formats, one to indicate parts in a service assembly and another to indicate the quantity of a given part in an illustration.

Service Assembly Reference Numbers

Parts in service assemblies have reference numbers in the form a:b. The a represents the reference number of the entire service assembly and the b represents a sequential number unique to each part within the service assembly.

For example, a wheel assembly might be identified by reference number 6, the tire by 6:1, the valve by 6:2, and the wheel by 6:3. When you order the assembly identified by reference number 6, you receive all parts identified by reference numbers 6:1, 6:2, and 6:3. However, you may also order any part individually. Reference numbers of this type appear in illustration and in parts lists.

Reference Numbers Indicating Quantity

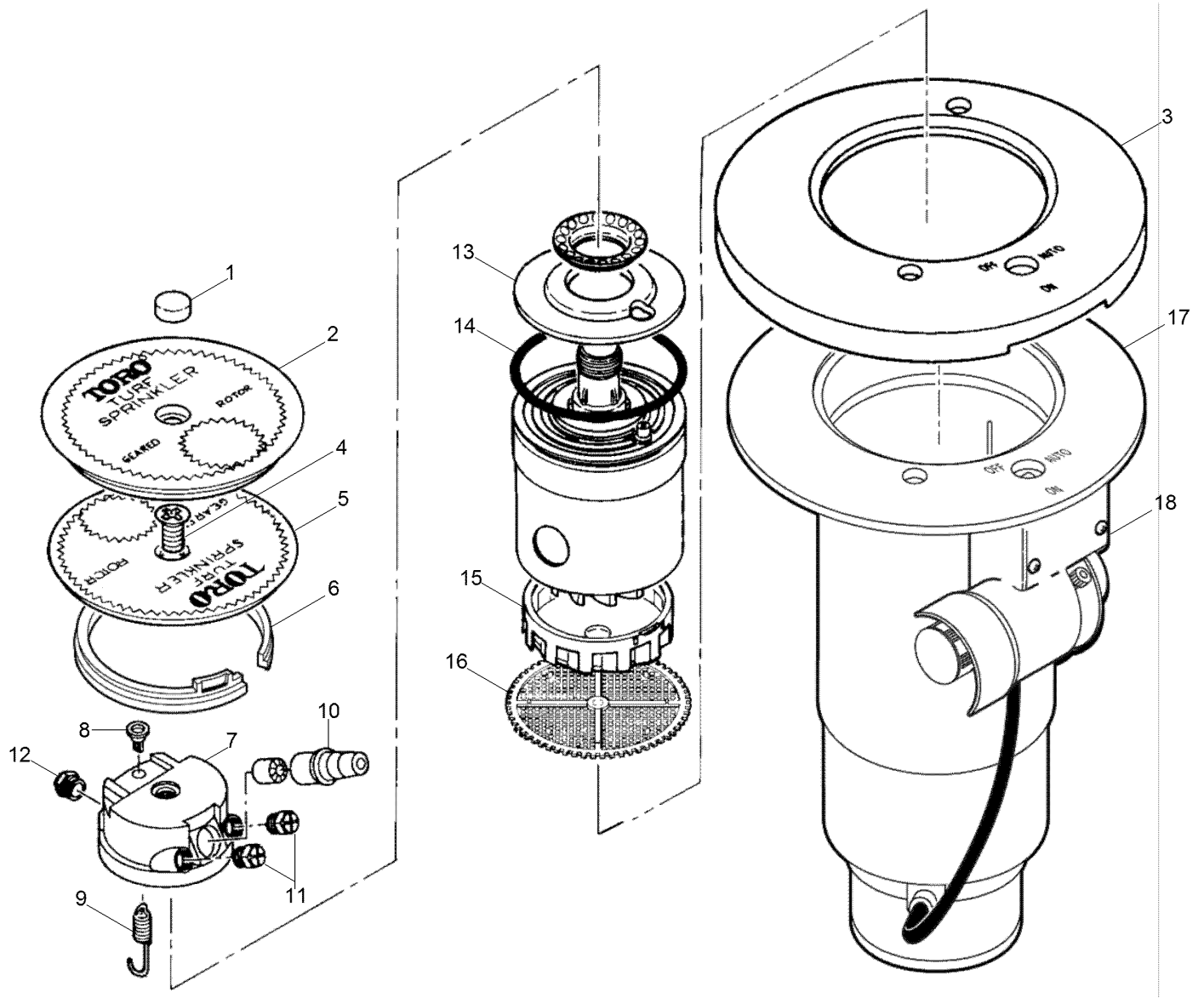
In an illustration, if a reference number indicates more than one part, the reference number has the form nX y. The n represents the quantity of the part, the X is the multiplication symbol, and the y represents the reference number.

For example, in an illustration, the reference number 2X 37 means that two of the parts identified by reference number 37 are indicated.

Contents

650 Series 4

650 Series



650 Series (continued)

<i>Ref.</i>	<i>Part Number</i>	<i>Qty.</i>	<i>Description</i>	<i>Ref.</i>	<i>Part Number</i>	<i>Qty.</i>	<i>Description</i>
1	3-2095	1	Plug, Cap, Rubber Cover	16	35-1106	1	Screen, Molded
2	35-8563	1	Cap Assy., Rubber Cover	17		1	Body Assy. (See Golf Sprinkler Body Assembly Section.) ♦
3	9-5355	1	Rubber Cover, Rounded Flange (See Service Item 650-02)	18		1	Pilot Valve Assy. (See Pilot Valve Assembly Section.) ♦
4	3-2510	1	Screw, Machine, 5/16-18 X 11/16"	650-02			Kit, Rubber Cover (Includes Items 1-3) ●▲
5	89-8461	1	Cap	35-7638			Nozzle Assy., W/O Main Nozzle, 650 (Includes Items 4, 5, 7, 8, 9 & 12) ●▲
6	35-6119	1	Snap Ring, Riser	89-4795			Nozzle Assy., W/O Main Nozzle And Cap, 650 (Includes Items 7, 8, 9 & 12) ●▲
7		1	Nozzle Base Assy., 656/658 (Use 89-4853 Or 89-4852) ♦	89-4852			Nozzle Assy., W/O Main Nozzle, 658 (Includes Items 4, 5, 7, 8, 9, 12 & 13) ●▲
7		1	Nozzle Base Assy., 651/652, 654/655 (Use 89-4795 Or 35-7638) ♦	89-4853			Nozzle Assy., W/O Main Nozzle And Cap, 658 (Includes Items 7, 8, 9, 12 & 13) ●▲
8	35-5846	1	Retainer, Spring	102-0840			Nozzle, Inner/Intermediate, Blank, Red ●▲
9	35-6289	1	Spring, Nozzle	363-3397			Plug, Da, 7/16", 52-57 Nozzles ●▲
10	35-7658	1	Nozzle, Main, #54 (Includes Item 11)	995-09			Valve Removal Tool ■▲
10	35-7659	1	Nozzle, Main, #55 (Includes Item 11)	995-15			Selector Tool (Flag Key) ■▲
10	35-7660	1	Nozzle, Main, #56 (Includes Item 11)	995-16			Riser Pliers ■▲
10	35-7661	1	Nozzle, Main, #57 (Includes Item 11)	995-18			Spring Collar Installation Tool ■▲
10	35-7662	1	Nozzle, Main, #58 (Includes Item 11)	995-79			Nut Driver, 7/16" (For Inner And Intermediate Nozzles) ■▲
10	35-9839	1	Nozzle, Main, #59	995-83			Multi-Purpose Tool ■▲
11	89-3942	1	Nozzle, Inner, 83 Blue (Pre-November 2003)	995-100			Valve Snap Ring Pliers With Screen Remover ■▲
11	89-4738	1	Nozzle, Inner, Red	995-101			Valve Insertion Tool ■▲
12	89-4785	1	Nozzle, Back, Green				
13	3-2093	1	Plate, Retainer				
14	363-4103	1	O-Ring, Body				
15	9-5187	1	Stator, 34/59				
15	9-5188	1	Stator, 54				
15	9-5186	1	Stator, 55/56				
15	9-5190	1	Stator, 57				
15	9-5192	1	Stator, 58				

● SERVICE ITEMS
▲ Not illustrated

■ SERVICE TOOLS
♦ Not serviced separately

Notes:

Notes:



Count on it.