



Form No. 3420-827 Rev A

**Count on it.**

# Parts Catalog

## EU Light Kit

**Groundsmaster® 4000/ or 4100 Series Rotary Mower**

**Model No. 31543**



# Ordering Replacement Parts

To order replacement parts, please supply the part number, the quantity, and the description of each part desired.

## Understanding Reference Numbers

Each identified part in an illustration has a reference number. The reference number for a part also appears in the parts list, along with other information about the part.

This catalog uses two special reference number formats, one to indicate parts in a service assembly and another to indicate the quantity of a given part in an illustration.

## Service Assembly Reference Numbers

Parts in service assemblies have reference numbers in the form a:b. The a represents the reference number of the entire service assembly and the b represents a sequential number unique to each part within the service assembly.

For example, a wheel assembly might be identified by reference number 6, the tire by 6:1, the valve by 6:2, and the wheel by 6:3. When you order the assembly identified by reference number 6, you receive all parts identified by reference numbers 6:1, 6:2, and 6:3. However, you may also order any part individually. Reference numbers of this type appear in illustration and in parts lists.

## Reference Numbers Indicating Quantity

In an illustration, if a reference number indicates more than one part, the reference number has the form nX y. The n represents the quantity of the part, the X is the multiplication symbol, and the y represents the reference number.

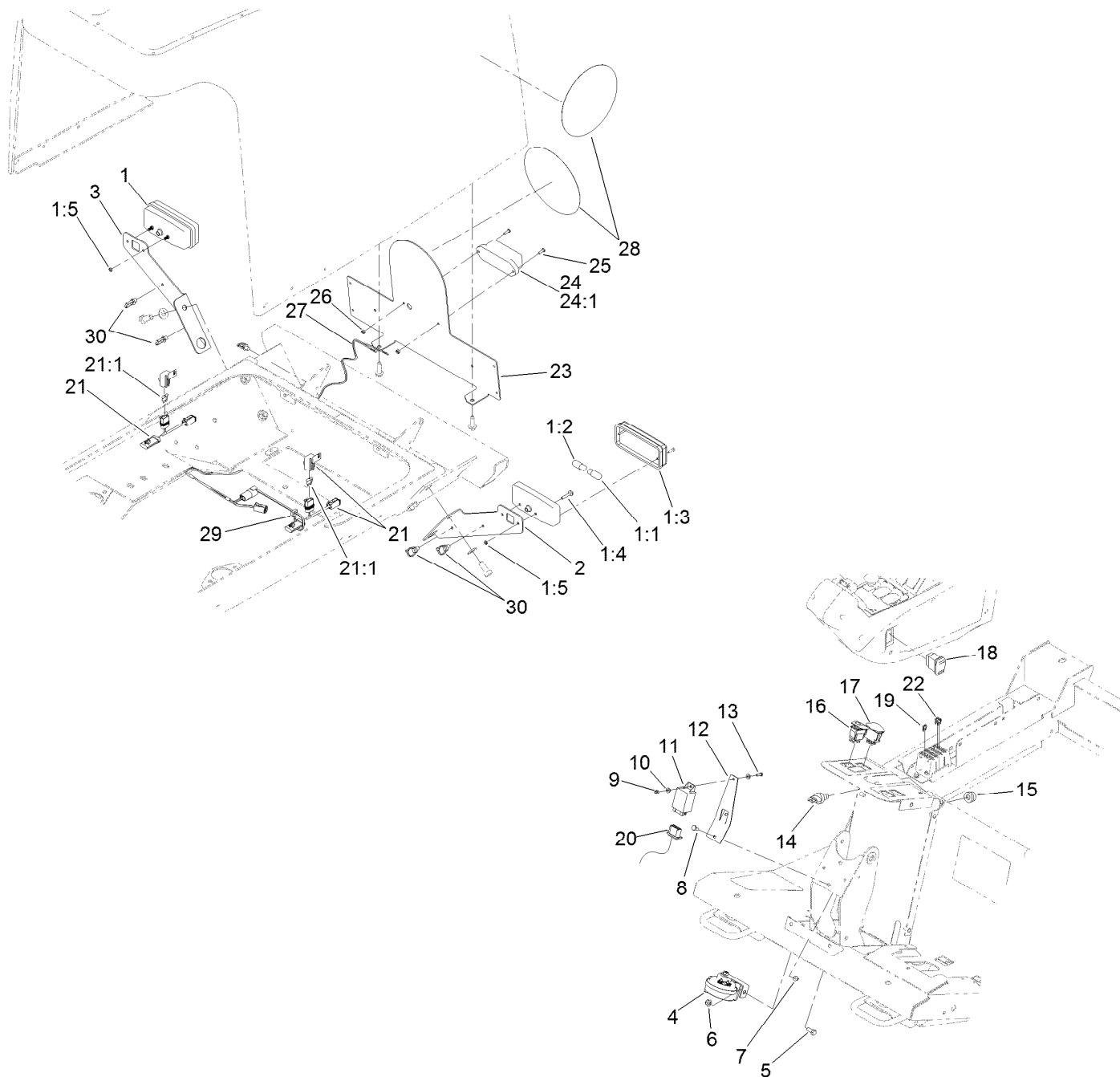
For example, in an illustration, the reference number 2X 37 means that two of the parts identified by reference number 37 are indicated.

# Contents

Tail Light Assembly ..... 4

Headlamp Assembly ..... 6

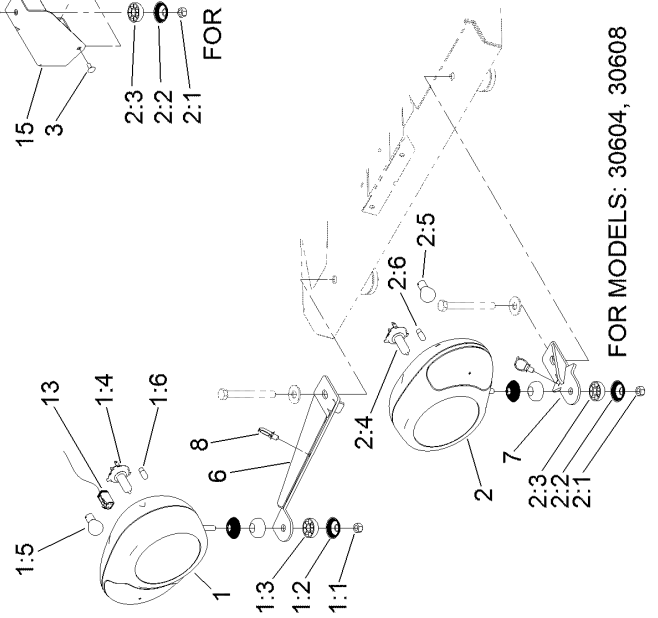
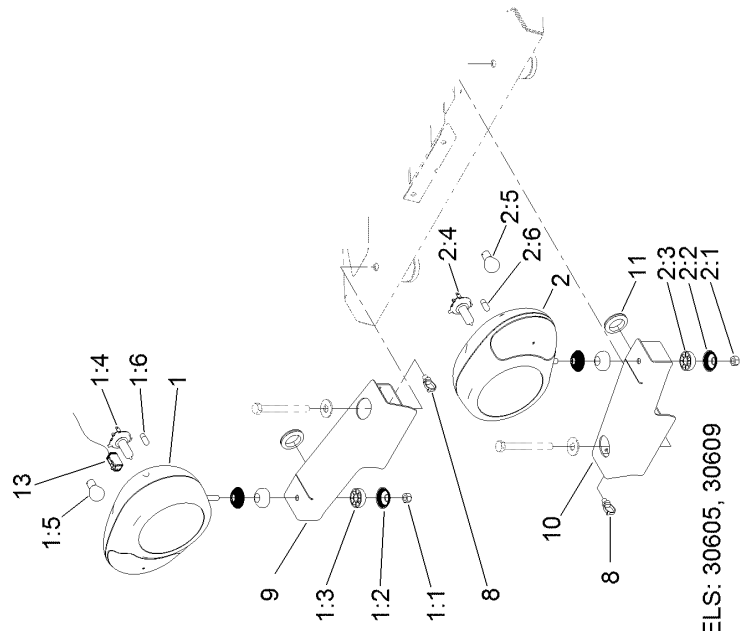
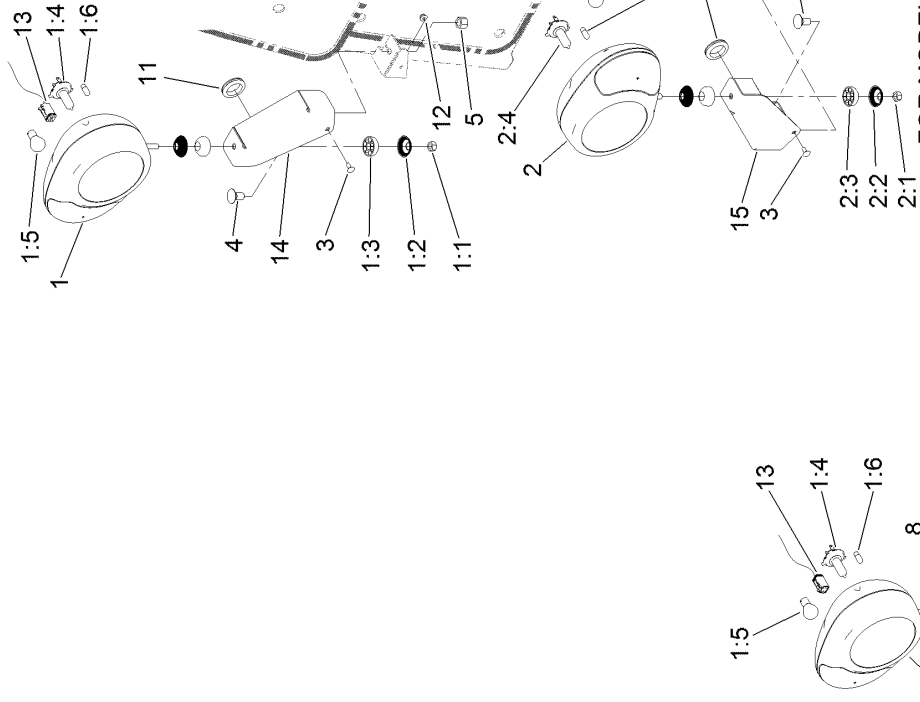
# Tail Light Assembly



## Tail Light Assembly (continued)

<i>Ref.</i>	<i>Part Number</i>	<i>Qty.</i>	<i>Description</i>	<i>Ref.</i>	<i>Part Number</i>	<i>Qty.</i>	<i>Description</i>
1	119-8093	2	Tail Light ASM	15	112-3313	1	Nut-Weatherproof
1:1	7228	1	Bulb	16	119-7769	1	Switch-Rocker, On/None/On
1:2	108-8054	1	Bulb	17	107-8034	1	Switch-Rocker, On-Off-On
1:3	120-6656	1	Lens-Red	18	95-8999	1	Switch
1:4	60-6910	2	Screw-HH	19	121-8866	2	Fuse-Mini Blade, 10 Amp
1:5	48-7880	4	Nut-Hex	20	122-0115	1	Harness-Wire, Main
2	119-8320-03	1	Mount-Light, LH Rear	21	122-0118	2	Harness-Wire, Tail Light Fuse
3	119-8318-03	1	Mount-Light, RH Rear	21:1	110928	1	Fuse-Blade, 5 Amp
4	116749	1	Horn	22	121-8867	1	Fuse-Mini Blade, 15 Amp
5	322-3	1	Screw-HH	23	132-6134-03	1	Mount
6	104-8300	1	Nut-HF, NI	24	119-8091	1	Light-Plate
7	104-7201	2	Nut-HF	24:1	120-7564	1	Bulb-12W
8	321-3	2	Screw-HH	25	3290-500	2	Screw-PPH
9	3296-2	1	Nut-Lock, NI	26	3296-2	2	Nut-Lock, NI
10	3256-14	2	Washer-Flat	27	122-0116	1	Harness-Wire
11	119-9880	1	Module-Flasher	28	111-4247	3	Sign-20K
12	121-1649-03	1	Mount-Flasher	29	3290-378	7	Tie-Cable
13	3290-134	1	Screw	30	32180-030	5	Clip-Tie
14	112-3324	1	Switch-Horn				

# Headlamp Assembly



## Headlamp Assembly (continued)

<i>Ref.</i>	<i>Part Number</i>	<i>Qty.</i>	<i>Description</i>	<i>Ref.</i>	<i>Part Number</i>	<i>Qty.</i>	<i>Description</i>
1	119-8323	1	RH Headlamp ASM	3	3229-11	2	Screw-CARR
1:1	33025-00	1	Nut-Lock, NI	4	3233-9	2	Screw-CARR
1:2	120-0475	2	Shell-Articulated	5	3296-23	2	Nut-Lock, NI
1:3	120-0474	2	Joint-Articulated	6	121-1672-03	1	Mount-RH
1:4	120-0471	1	Bulb-Halogen	7	121-1673-03	1	Mount-LH
1:5	120-0472	1	Bulb-Lamp	8	32180-030	2	Clip-Tie
1:6	120-0473	1	Bulb-Lamp	9	121-1694-03	1	Mount-Headlamp, RH
2	119-8324	1	LH Headlamp ASM	10	121-1691-03	1	Mount-Headlamp, LH
2:1	33025-00	1	Nut-Lock, NI	11	240-3	2	Grommet-Rubber
2:2	120-0475	2	Shell-Articulated	12	104-7201	2	Nut-HF
2:3	120-0474	2	Joint-Articulated	13	122-0117	1	Harness-Wire, Front
2:4	120-0471	1	Bulb-Halogen	14	130-5912-03	1	Mount-Light, RH
2:5	120-0472	1	Bulb-Lamp	15	130-5915-03	1	Mount-Light, LH
2:6	120-0473	1	Bulb-Lamp				



**Count on it.**