



Powershift[®]

824 Snowthrower

Model No.38542 – 9900001 & Up

Model No.38546 – 9900001 & Up

Parts Catalog

ORDERING REPLACEMENT PARTS

To order replacement parts, please supply: the part number, the quantity, and the description of each part desired.

Contents

Description	Page	Description	Page
Housing and Chute Assembly	1-2	Traction Linkage Assembly	7
24" Auger Gearcase Assembly No. 74-1560	3	Handle Assembly	8
Engine Assembly	4	Traction Drive Assembly	9
Transmission Assembly No. 66-8030	5-6	Engine Breakdown Assembly	10-17

Accessories

Description	Model / Parts No.	Description	Model / Parts No.
110 Vac Electric Starter Kit	38039	Light Kit	66-7941
230 Vac Elec. Starter Kit (Model 38546 only)	38041	Tire Chain Kit	56-2700
Snow Cab	68-9500	Differential Kit	38038
Drift Breaker	66-7960		

Part Description Abbreviations

Part descriptions in this catalog may include the following abbreviations.

Abbreviation	Meaning	Abbreviation	Meaning
AR	as required	HWHTF	hex washer head thread forming
ASM	assembly	INC	incorporated
CARR	carriage	LH	left hand
DEG	degrees	PH	pan head
FH	flat head	PPH	Phillips pan head
GA	gauge	PTO	power take off
HF	hex flange	RH	right hand
HFV	hex flange washer	SFH	slotted fillister head
HH	hex head	SH	square head
HHF	hex head flange	SHWH	slotted hex washer head
HHST	hex head self tapping	SPH	slotted pan head
HJ	hex jam	STD	standard
HOC	height-of-cut	TAP	self tapping
HS	hex socket	TH	truss head
HSBH	hex socket button head	TTH	Torx truss head
HSFH	hex socket flat head	WH	wing head
HSH	hex socket head		
HWH	hex washer head		

Important Format Explanations

This catalog uses special formats to convey information in illustrations and parts lists. Specifically, one format is used in conjunction with service assemblies and another with quantities associated with reference numbers.

Service Assemblies

Parts within service assemblies have reference numbers in the form $X:Y$. X is the reference number of the service assembly and Y is a sequential number unique to each part within the service assembly.

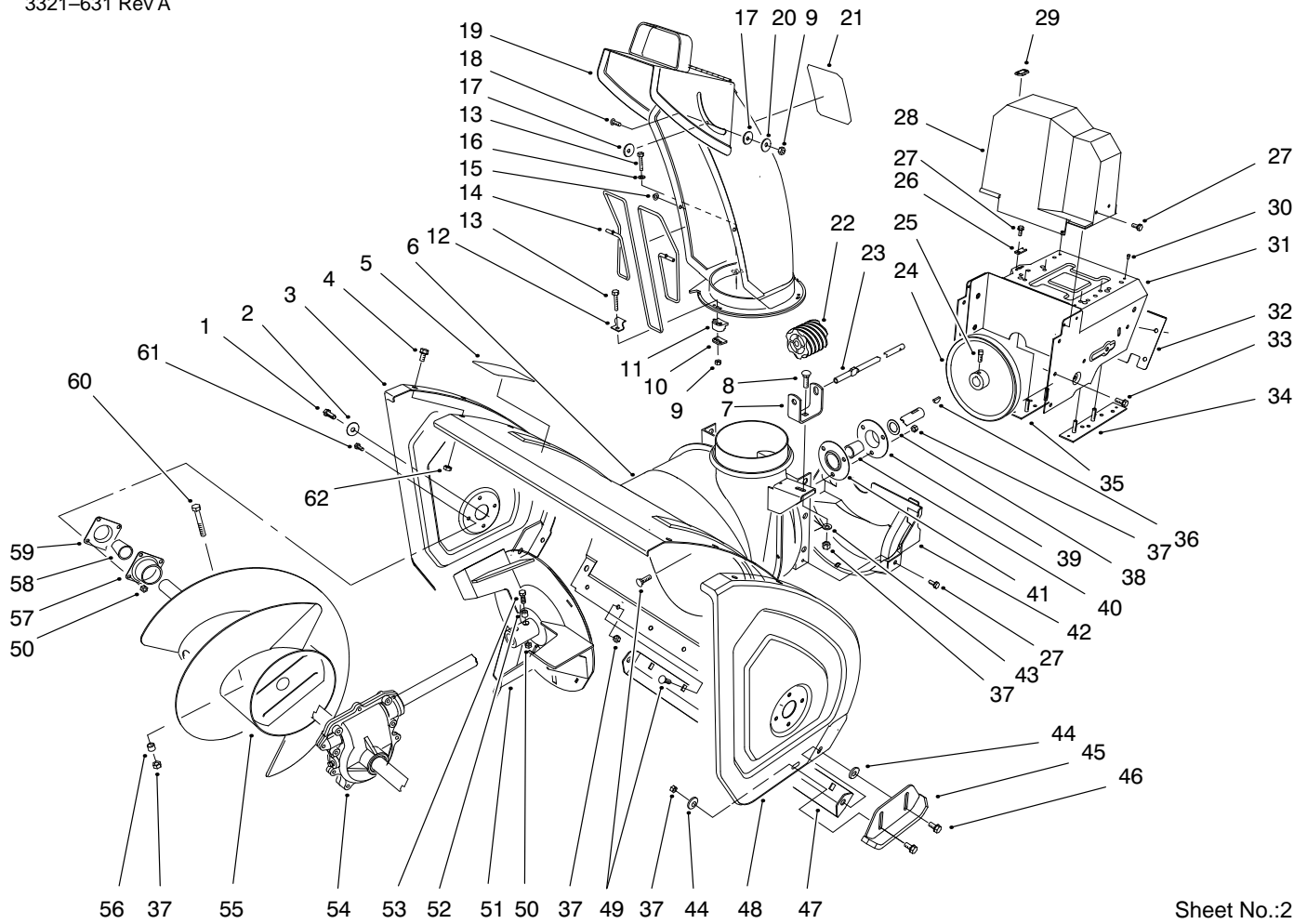
For example, a wheel assembly might be identified by reference number 6, the tire by 6:1, the valve by 6:2, and the wheel by 6:3. When you order the assembly identified by reference number 6, you receive all parts identified by reference numbers 6:1, 6:2, and 6:3. However, you may also order any part individually.

Reference numbers of this type appear in part lists and as callouts in illustrations.

Reference Numbers with Quantities

Illustrations may have a quantity in parentheses next to a reference number, in the form $X (Y)$. X is the reference number. Y in parentheses is the quantity of the part identified by the reference number.

For example, the illustration callout 4 (2) indicates that two parts are used in that instance.

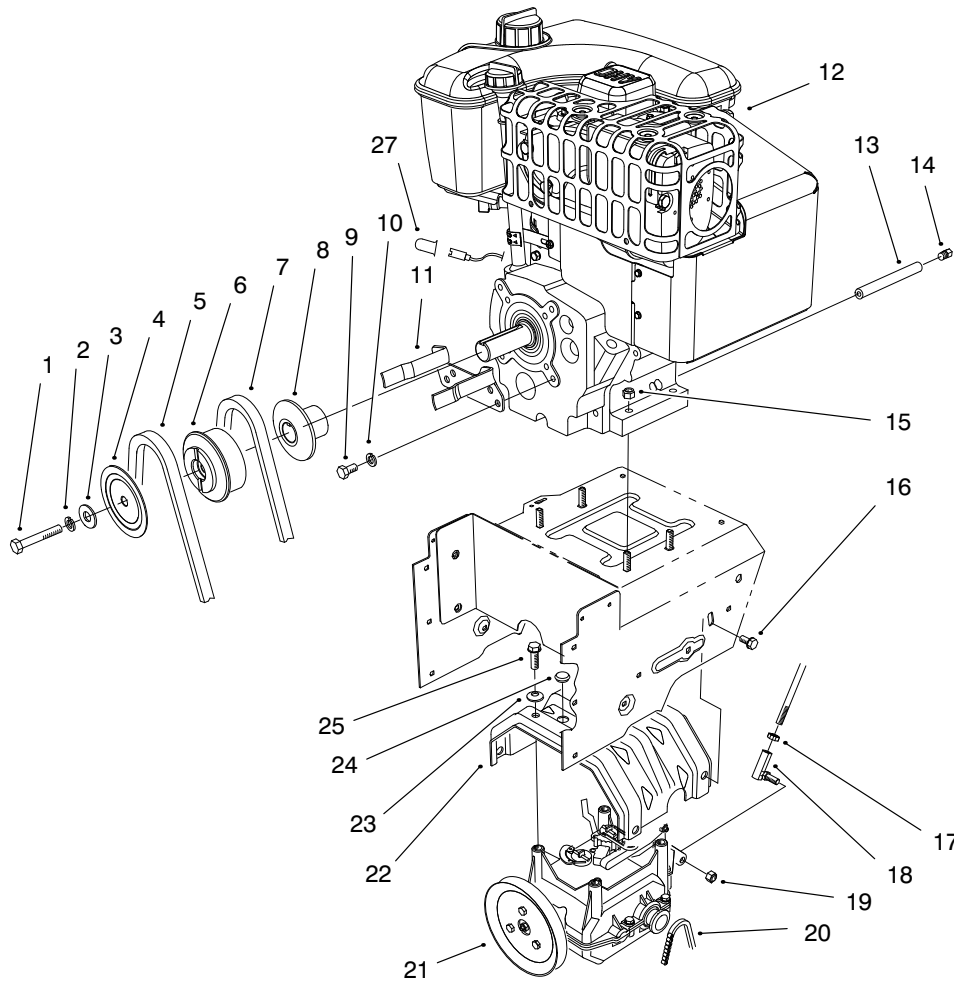


Sheet No.:2

Housing and Chute Assembly

Ref. No.	Part No.	Qty.	Description
1	323-4	2	Screw-HH
2	3-0750	2	Washer
3	66-7821-01	1	Plate-Side, RH
4	3234-28	12	Screw-HHF
5	53-7670	1	Decal-Warning, Auger (Only On: 38542)
5	94-2568	1	Decal - Warning (Only On: 38546)
6	62-0720-01	1	Housing ASM
7	63-2180	1	Bracket-Worm, Chute
8	3230-2	1	Screw-CARR
9	3296-2	4	Nut-Lock Ni
10	63-2670	3	Plate-Retainer, Chute
11	62-1430	3	Retainer-Chute
12	63-3130	1	Clip-Guard, Chute
13	3274-13	3	Screw-HSH
14	63-3020	1	Guard-Chute
15	3290-326	2	Nut-Push
16	3256-14	1	Washer-Flat
17	63-2900	2	Washer-Plastic
18	32122-32	1	Screw
19	62-0840-03	1	Chute ASM
20	3256-61	1	Washer-Flat
21	94-2559	1	Decal - Danger (Only On: 38546)

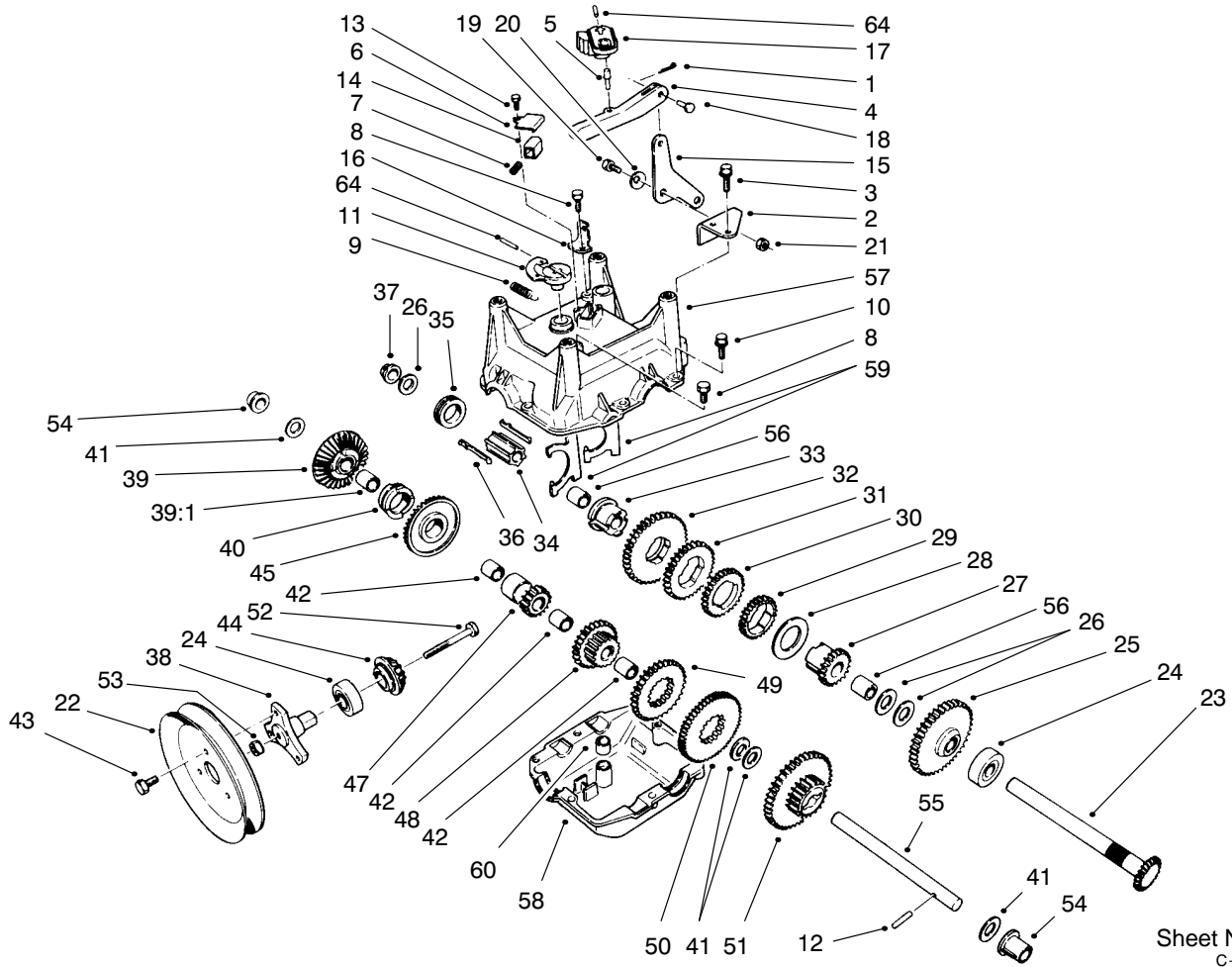
Ref. No.	Part No.	Qty.	Description
21	94-8079	1	Decal-Danger (Only On: 38542)
22	62-0820	1	Gear-Worm
23	62-1720	1	Rod-Chute, Lower
24	62-1300	1	Pulley-Impeller
25	3242-4	2	Screw-Sqh
26	63-2300	1	Retainer-Cable
27	32144-4	5	Screw-HH
28	63-2080	1	Cover-Belt, Upper
29	63-3290	1	Cover-Cable
30	3269-23	4	Rivet-Pop
31	66-6980-01	1	Engine Frame ASM
32	62-1440-01	1	Cover-Frame, Engine
33	32144-14	6	Screw-HWH
34	68-4110	1	Plate ASM-Frame, LH
35	68-4100	1	Plate ASM-Frame, RH
36	3257-23	1	Key-Woodruff
37	3296-29	14	Nut-Lock Ni
38	252-80	1	Bearing-Thrust
39	26-6110	1	Flange-Cup, Bearing
40	63-3450	1	Bearing-Ball
41	26-6120	1	Flange-Cup, Bearing
42	68-8410	1	Cover-Belt, Lower
43	3256-23	1	Washer-Flat



Sheet No.:3

Engine Assembly

Ref. No.	Part No.	Qty.	Description	Ref. No.	Part No.	Qty.	Description
1	3212-8	1	Screw-HH	24	95-7947	2	Cap-Plug
2	3253-6	1	Washer-Lock/Sp	25	11-0590	4	Screw-Thread Forming
3	3256-41	1	Washer-Flat	27	94-2782	1	Cap-Wire, Lite
4	62-0940	1	Sheave-Half, Impeller				
5	63-2961	1	Belt-Impeller				
6	62-0930	1	Pulley-Engine, Center				
7	63-2951	1	Belt-Traction				
8	62-0920	1	Sheave-Half, Traction				
9	3210-1	2	Screw-HH				
10	3253-4	2	Washer-Lock/Sp				
11	68-7510-03	1	Belt Guide ASM				
12		1	Engine-Tecumseh (OHSK80-221201A)				
13	289-34	1	Nipple-Pipe				
14	288-2	1	Cap-Pipe				
15	32128-20	4	Nut-Hex Flange				
16	3234-7	4	Screw-HHF				
17	3220-3	1	Nut-Jam				
18	78-2920	1	Ball-Joint				
19	3296-6	1	Nut-Lock Ni				
20	63-2940	1	Chain				
21	66-8030	1	Traction Gearcase ASM				
22	63-2990-03	1	Transmission Frame ASM				
23	3290-461	4	Washer-Spring				

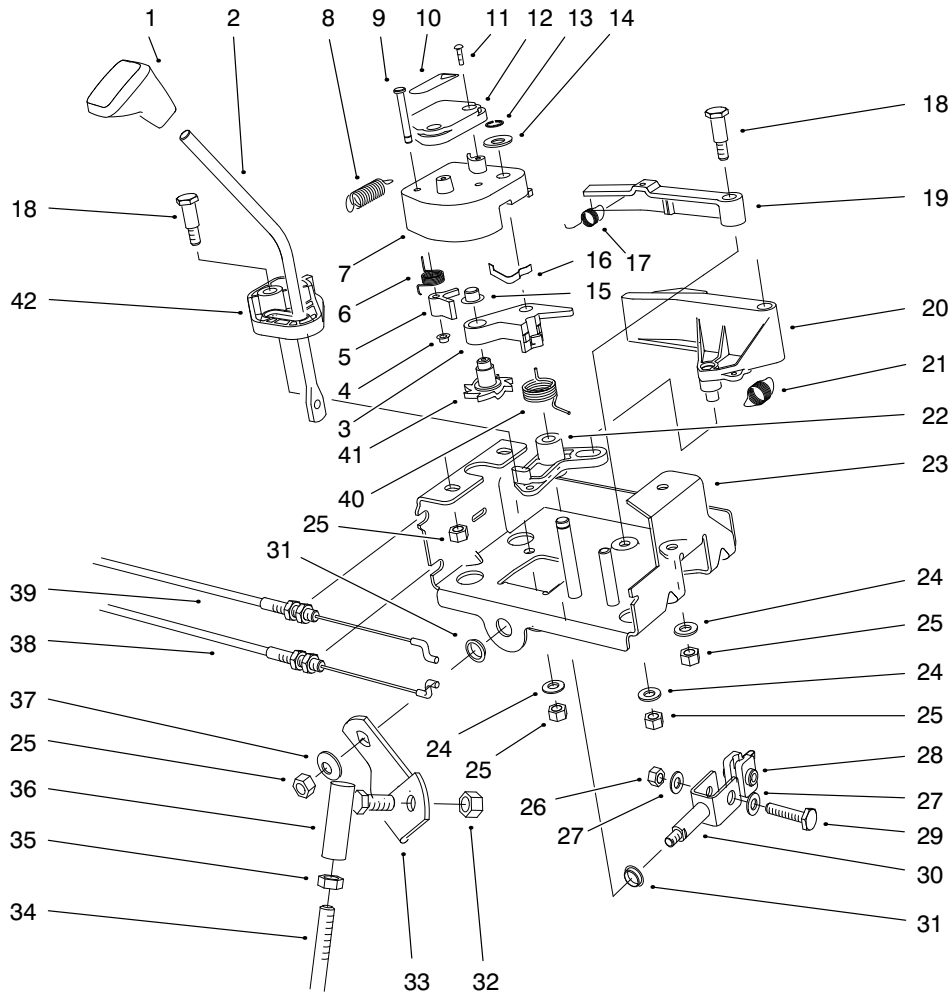


Sheet No.:A2
C-2792

TRANSMISSION ASSEMBLY NO. 66-8030

Ref. No.	Part No.	Qty.	Description
1	3272-1	1	Pin-Cotter
2	62-1190	1	Bracket-Bellcrank
3	32104-95	2	Screw-HWH
4	62-0860	1	Link-Shift, Gear
5	63-2190	1	Pin-Link, Gear Shift
6	62-1690	1	Cover-Detent
7	63-2890	1	Spring-Detent
8	32144-4	2	Screw-HH
9	63-2920	1	Spring-Extension
10	32144-86	6	Screw-HH
11	62-0880	1	Lever
12	32121-106	1	Pin-Spring
13	32104-71	1	Screw-HWH
14	62-1020	1	Button-Detent
15	63-2600	1	Bellcrank
16	62-1740	1	Bracket-Cable, F/R
17	62-0870	1	Lever-Shift, Gear
18	283-3	1	Pin-Clevis
19	63-3410	1	Screw-Shoulder
20	3290-477	1	Washer-Curved
21	3296-42	1	Nut-Lock Ni
22	62-1310	1	Traction-Sheave, Half
23	62-1080	1	Shaft-Output
24	38-7820	2	Bearing-Ball
25	62-0370	1	Gear, 41 T
26	252-59	3	Bearing-Thrust

Ref. No.	Part No.	Qty.	Description
27	62-0340	1	Gear-Sleeve, 19 T
28	63-2280	1	Washer-Thrust
29	62-0250	1	Gear, 29 T
30	62-0200	1	Gear, 27 T
31	62-0220	1	Gear, 34 T
32	62-0240	1	Gear, 45 T
33	62-0320	1	Sleeve-Gear
34	68-4320	1	Sleeve-Shift
35	62-0430	1	Collar-Shift
36	62-0310	2	Key
37	62-1180	1	Bushing-Flange, Output
38	62-0380	1	Hub-Pulley
39	13-3559	1	Gear-Bevel, Rev, 36T
39:1	62-1160	1	Bushing
40	67-5880	1	Collar-Shift
42	62-1160	3	Bushing
41	257-10	4	Washer-Thrust
43	12-3270	3	Screw
44	62-0350	1	Pinion-Bevel
45	67-5870	1	Bevel Gear 36 T
47	62-0500	1	Gear-Bevel, 15 T
48	68-4310	1	Gear, 26 T
49	62-0210	1	Gear, 33 T
50	62-0260	1	Gear, 51 T

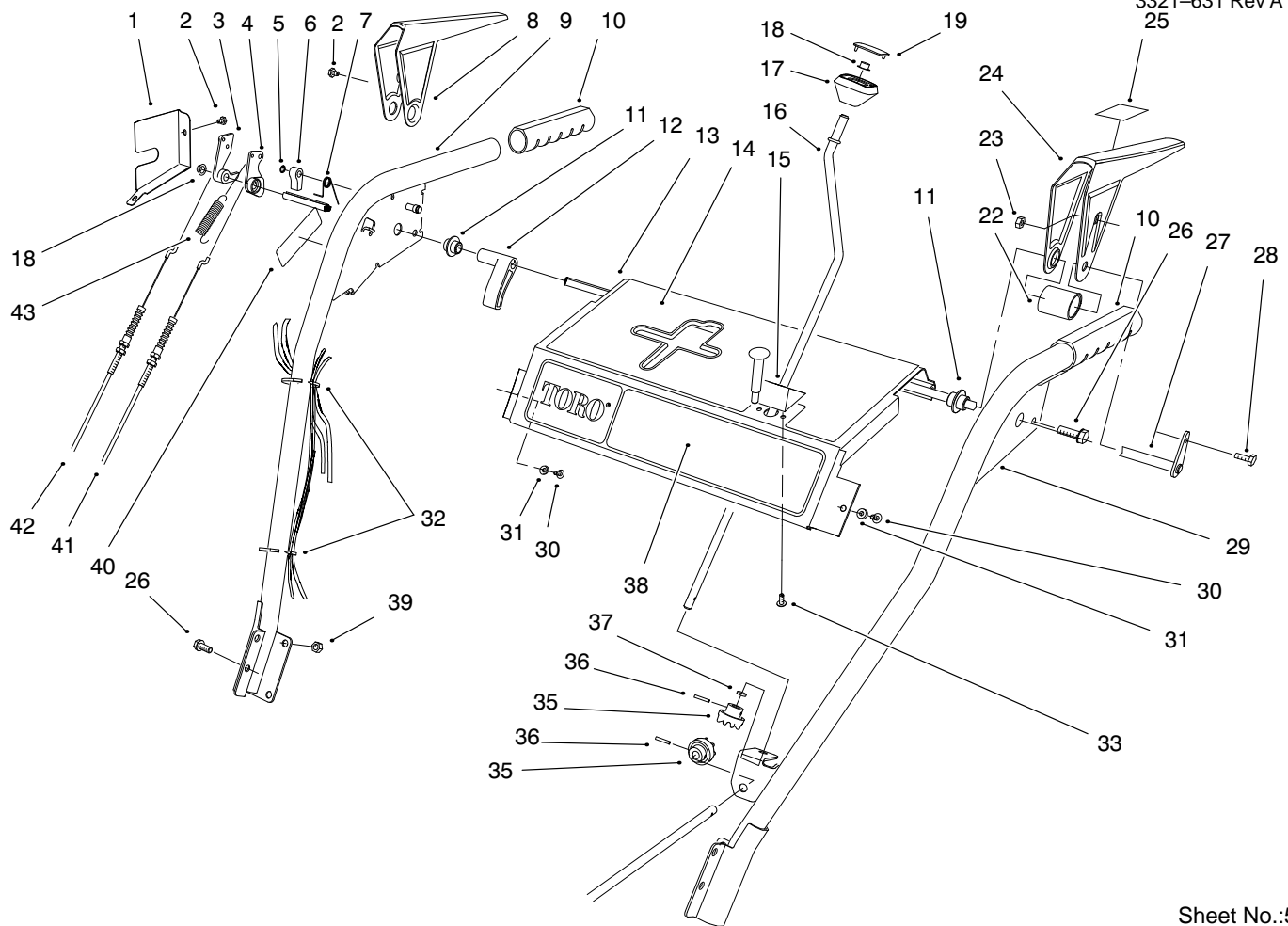


Sheet No.:4

Traction Linkage Assembly

Ref. No.	Part No.	Qty.	Description
1	62-1290	1	Knob-Shift
2	67-9240	1	Rod-Shift
3	62-1110	1	Lever-Wheel, Index
4	3290-422	1	Nut-Push
5	62-0180	1	Tang-Index
6	62-1650	1	Spring-Torsion
7	62-1100	1	Lever Latch
8	63-2220	1	Extension Spring
9	63-2610	1	Pin-Tang
10	63-2480	1	Decal-No. 2
11	94-6961	2	Screw
12	62-1140	1	Cover-Latch
13	32120-46	1	Ring-Retaining
14	257-9	1	Washer-Thrust
15	3290-320	1	Retainer-Push On
16	62-1710	1	Spring-Flat
17	63-2240	1	Spring-Extension
18	63-2650	2	Screw-Shoulder
19	62-1700	1	Lever-Lockout
20	62-1130	1	Lever-Reverse
21	63-2230	1	Spring-Extension
22	62-1120	1	Lever-Reverse, Switch
23	63-2150-03	1	Control Frame ASM
24	3256-23	3	Washer-Flat
25	3296-29	7	Nut-Lock Ni

Ref. No.	Part No.	Qty.	Description
26	3296-42	1	Nut-Lock Ni
27	3256-1	2	Washer-Flat
28	67-9250	1	Retainer-Rod, Shift
29	321-9	1	Screw-HH
30	66-7730	1	Clevis ASM
31	256-296	2	Bushing
32	3296-6	1	Nut-Lock Ni
33	63-2630	1	Bracket-Shift
34	63-2830	1	Rod-Bent Shift, Lower
35	3220-3	1	Nut-Jam
36	78-2920	1	Ball-Joint
37	3290-456	1	Washer-Belleville
38	63-2210	1	Cable-Gearbox
39	63-2200	1	Cable-Arm, Latch
40	63-2270	1	Torsion Spring
41	62-0170	1	Wheel-Index
42	62-1470	1	Base-Lockout

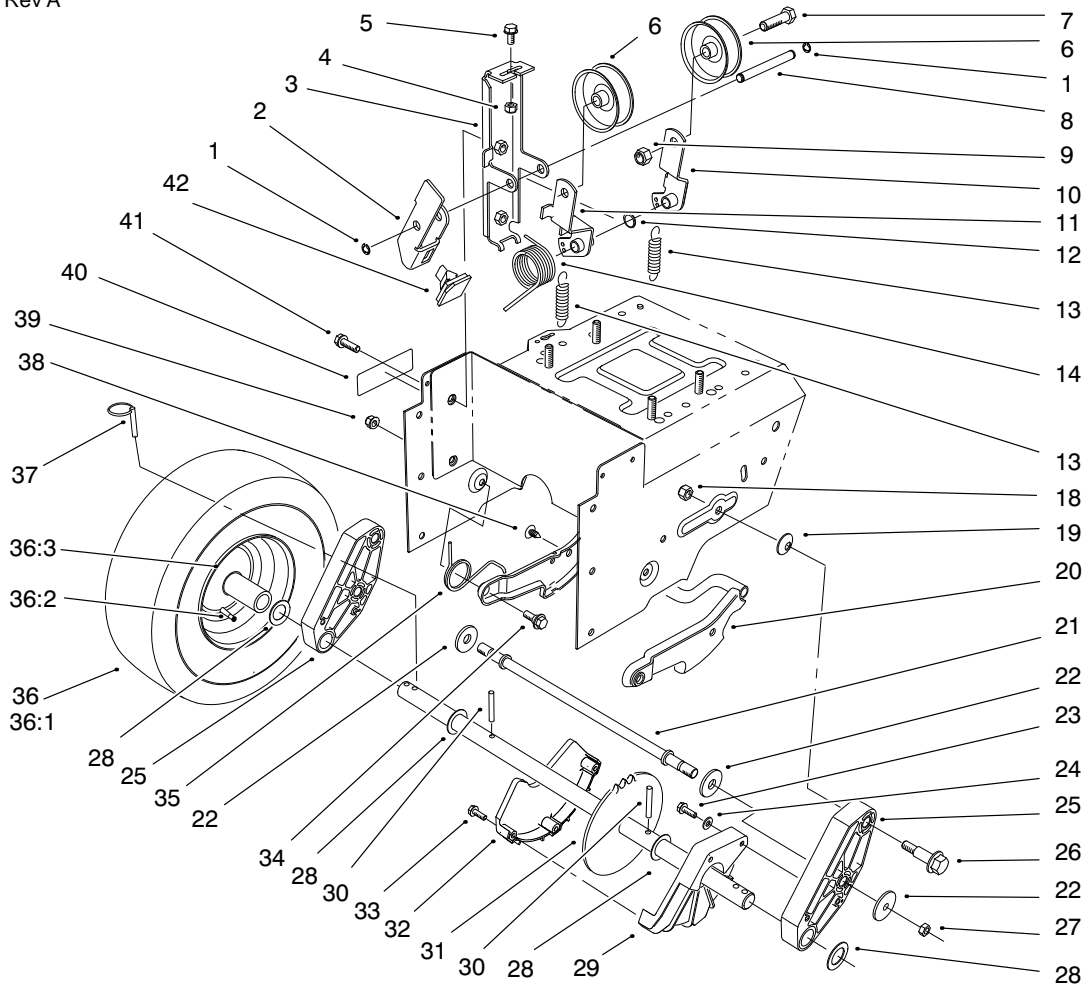


Sheet No.:5

Handle Assembly

Ref. No.	Part No.	Qty.	Description
1	63-2170-03	1	Cover-Lock, Lever
2	2210-250	3	Screw-HH
3	62-0300	1	Tang-Locking
4	62-0290	1	Cam-Release
5	32151-66	1	E-Ring-Retainer
6	62-0280	1	Latch-Locking
7	63-2910	1	Spring-Torsion
8	62-1050-03	1	Lever-Traction, RH
9	62-1381-03	1	RH Handle ASM, 24"-32"
10	66-7850	2	Grip-Handle
11	62-1070	2	Bushing-Lever
12	62-1640	1	Lever-Trip
13	99-5968	1	Control Plate ASM (Model 38542)
13	99-5969	1	Control Plate ASM (Model 38546)
14	99-3230	1	Decal-Top, Panel (Only On: 38542)
14	99-3229	1	Decal-Control (Only On: 38546)
15	62-1490	1	Plate-Guide
16	63-2160	1	Crank-Rod, Chute
17	62-1320	1	Knob-Control, Chute
18	3290-320	2	Retainer-Push On
19	62-1520	1	Cover-Knob
22	63-3380	1	Spacer-Lever, Traction

Ref. No.	Part No.	Qty.	Description
23	3296-2	1	Nut-Lock Ni
24	62-1060-03	1	Lever-Traction, LH
25	63-3050	1	Decal-Lever (Only On: 38542)
26	32144-14	6	Screw-HWH
27	63-2030	1	Cross Rod ASM
28	3290-359	1	Screw-HWH
29	66-8091-03	1	LH Handle ASM, 24"-32"
30	32104-76	2	Screw-Acorn Slot
31	3256-14	2	Washer-Flat
32	3290-378	2	Tie-Cable
33	94-6961	2	Screw
35	62-1460	2	Gear-Universal
36	32121-50	2	Pin-Spring
37	62-1230	1	Washer-Rubber
38	63-2510	1	Decal-Front Panel (824)
39	3296-47	4	Nut-Lock Ni
40	94-2575	1	Decal - Adjustment (Only On: 38546)
40	66-6860	1	Decal-Warning (Only On: 38542)
41	63-2710	1	Cable-Traction
42	63-2700	1	Cable-Impeller
43	88-0810	1	Spring-Extension

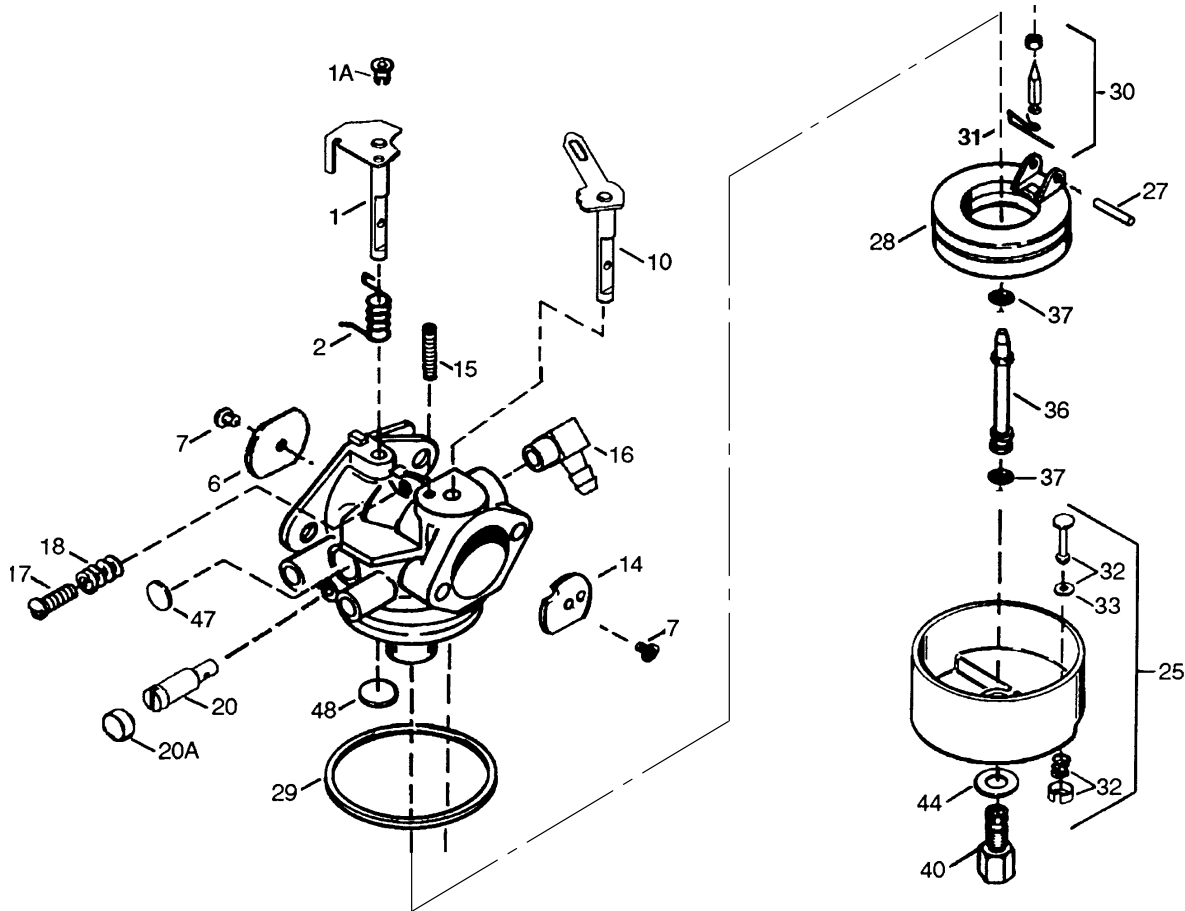


Sheet No.:6

Traction Drive Assembly

Ref. No.	Part No.	Qty.	Description
1	32120-46	2	Ring-Retaining
2	63-2810	1	Arm-Brake
3	63-2850	1	Idler Arm Bracket ASM
4	3296-42	1	Nut-Lock Ni
5	3234-13	1	Screw-HHF
6	3-4244	2	Pulley-Idler
7	323-7	2	Screw-HH
8	62-0970	1	Pin-Idler
9	3296-59	2	Nut-Lock Ni
10	93-8045	1	Traction Idler Arm ASM
11	93-8046	1	Impeller Idler Arm ASM
12	3256-38	1	Washer-Flat
13	63-2870	2	Spring-Extension
14	63-2880	1	Spring-Torsion
18	3296-39	2	Nut-Lock Ni
19	3290-461	2	Washer-Spring
20	62-0470-03	1	Latch ASM
21	66-7720	1	Rod-Latch
22	63-3340	4	Washer-Support
23	32144-4	2	Screw-HH
24	3256-1	2	Washer-Flat
25	66-7740	2	Pivot Arm ASM
26	62-1330	2	Bolt-Shoulder
27	3296-23	2	Nut-Lock Ni

Ref. No.	Part No.	Qty.	Description
28	252-80	4	Bearing-Thrust
29	62-1010	1	Guard-Chain, LH
30	32121-9	2	Pin-Spring
31	63-2111	1	Axle ASM
32	62-1000	1	Guard-Chain, RH
33	94-4496	3	Screw-Pan Hd
34	5-2490	2	Screw-Shoulder
35	63-2740	1	Spring-Latch, Torsion
36	67-9220	2	Wheel And Tire ASM
36:1	231-120	1	Tire
36:2	232-46	1	Tube
36:3	241-128	1	Wheel
37	3290-243	2	Pin-Lynch
38	3290-476	1	Fastener-Panel
39	3296-47	2	Nut-Lock Ni
40	94-2575	1	Decal - Adjustment (Only On: 38546)
40	66-6860	1	Decal-Warning (Only On: 38542)
41	3234-7	2	Screw-HHF
42	66-8060	1	Pad-brake



Carburetor Tecumseh # 640169

Ref. No.	Part No.	Description	No. Used
1	633777	Shaft/Lever – Throttle Asm.	1
1A	36288	Throttle Link Bushing	1
2	631970	Spring – Throttle Return	1
6	640109	Shutter – Throttle	1
7	650506	Screw – Shutter	2
10	632778	Shaft/Lever – Choke Asm.	1
14	631753	Shutter – Choke	1
15	630735	Spring – Choke Positioning	1
16	632527	Fitting – Fuel Inlet	1
17	651025	Screw – Idle Regulating	1
18	630766	Spring – Tension	1
20	640027	Screw – Idle Adjustment	1
20A	640053	Cap – Screw Idler Adj.	1
25	632594A	Float Bowl Assembly (Incl. Ref. #32 & 33)	1

Ref. No.	Part No.	Description	No. Used
27	631024	Shaft – Float	1
28	632019	Float – Carburetor	1
29	631028	Gasket – Bowl to Body	1
30	631021	Inlet Needle, Seat & Clip Asm (Incl. Ref. #31)	1
31	631022	Clip – Inlet Needle	1
32	27136A	Drain Assembly (Incl. Ref. #33)	1
33	27554	Gasket – Bowl Drain	1
36	640013	Main Nozzle Tube	1
37	632547	O–Ring–Main Nozzle Tube	2
40	640170	High Speed Bowl Nut	1
44	27110	Gasket – Bowl to Body	1
47	630748	Plug – Welch	1
48	631027	Plug – Welch	1

Obtain Parts From Tecumseh

Engine Tecumseh Model # OHSK80-221201A

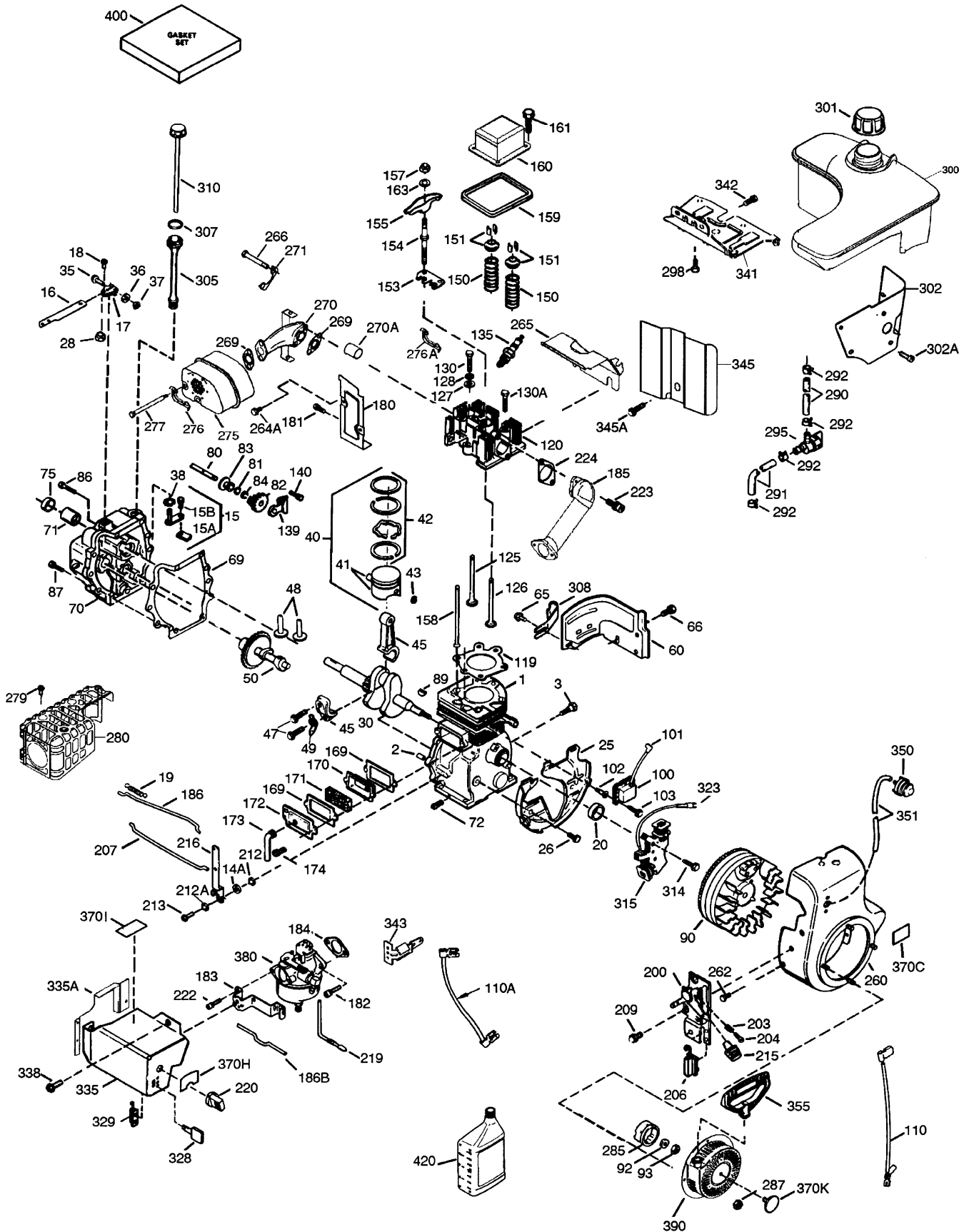
Ref. No.	Part No.	Description	No. Used
1	37251	Cylinder Asm (Incl. Ref. #2, 20, & 72)	1
2	27652	Dowel Pin	2
3	650820	Screw	2
14A	28558	Washer	1
15	30699C	Governor (Incl. Ref. #15A & 15B)	1
15A	30700	Governor Yoke	1
15B	650494	Screw	1
16	37255	Governor Lever	1
17	29916	Governor Lever Clamp	1
18	651028	Screw	1
19	36281	Spring - Extension	1
20	35319	Oil Seal	1
25	36460	Blower Housing Baffle	1
26	650561	Screw	2
28	30322	Lock Nut	1
30	37272	Crankshaft	1
35	29826	Screw	1
36	29918	Lock Washer	1
37	29216	Lock Nut	1
38	29642	Retaining Ring	1
40	40011	Piston, Pin & Ring Set (Std.)	1
40	40012	Piston, Pin & Ring Set (.010" OS)	1
41	40009	Piston & Pin Asm (Std.) (Incl. Ref. #43)	1
41	40010	Piston & Pin Asm (.010" OS) (Incl. Ref. #43)	1
42	40013	Ring Set (Std.)	1
42	40014	Ring Set (.010" OS)	1
43	27888	Piston Pin Retaining Ring	2
45	36897	Connecting Rod Asm (Incl. Ref. #47, & 49)	1
47	651033	Connecting Rod Bolt	2
48	35313	Valve Lifter	2
49	36896	Oil Dipper	1
50	35682A	Camshaft (MCR)	1
60	35316A	Blower Housing Extension	1
65	30200	Screw	1
66	30063	Screw	1
*69	35262A	Cylinder Cover Gasket	1
70	37273	Cylinder Cover (Incl. Ref. #71, 75, & 80)	1
71	35377	Crankshaft Bushing	1
72	27642	Oil Drain Plug	1
75	35319	Oil Seal	1
80	31845	Governor shaft	1
81	30590A	Washer	1
82	35378	Governor Gear Asm	1
83	30588A	Governor Spool	1
84	29193	Retaining Ring	1

Ref. No.	Part No.	Description	No. Used
86	650833	Screw	7
87	650832	Screw	1
89	32589	Flywheel Key	1
90	611093	Flywheel (W/Ring Gear)	1
92	650880	Lock Washer	1
93	650881	Flywheel Nut	1
100	35135	Solid State Ignition	1
101	610118	Spark Plug Cover	1
102	651024	Solid State Mounting Stud	2
103	651007	Screw, Torx T-15	2
110	35187	Ground Wire	1
110A	37047	Ground Wire	1
*119	37256	Cylinder Head Gasket	1
120	37258	Cylinder Head	1
125	36934	Exhaust Valve (Std.)	1
125	36936	Exhaust valve (1/32" OS)	1
126	36935	Intake Valve (Std.)	1
126	36937	Intake Valve (1/32" OS)	1
127	650691	Washer	6
128	650690	Belleville Washer	6
130	6021A	Screw	6
131A	650990	Screw	2
135	34645	Resistor Spark Plug (RN4C)	1
139	33369	Governor Gear Bracket	1
140	650836	Screw	2
150	33507	Valve Spring	2
151	33508	Valve Spring Keeper	2
153	35949	Push Rod Guide	1
154	650945	Rocker Arm Stud	2
155	35950	Rocker Arm	2
157	650947	Jam Nut	2
158	35466	Push Rod	2
159*	35952	Rocker Arm Cover Gasket	1
160	35953A	Rocker Arm Cover	1
161	30063	Screw	4
163	650890	Lock Washer	2
*169	27896A	Valve Cover Gasket	2
170	28423	Breather Body	1
171	28424	Breather Element	1
172	28425	Valve Cover	1
173	35350	Breather Tube	1
174	650128	Screw	2
180	35954	Blower Housing Extension	1
181	30200	Lock Nut	2
182	650517	Screw	2
183	34587A	Choke Bracket	1
*184	33263	Carburetor To Intake Pipe Gasket	1
185	37085	Intake Pipe	1
186	37261	Governor Link	1
186B	36652	Spring - Choke	1

*Included in Gasket Set 37257

Obtain Parts From Tecumseh

Engine Tecumseh Model # OHSK80-221201A (Cont.)



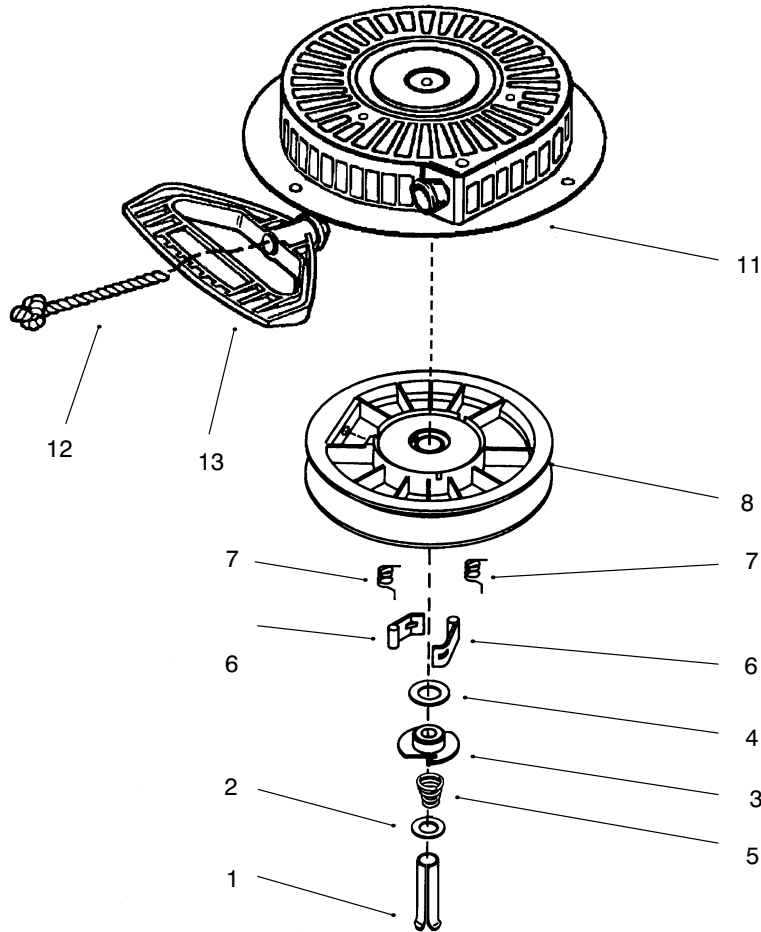
Engine Tecumseh Model # OHSK80-221201A (Cont.)

Ref. No.	Part No.	Description	No. Used
200	35702	Control Bracket (Incl. Ref. #203 204 & 206)	1
203	31342	Compression Spring	1
204	651029	Screw	1
206	610973	Terminal	1
207	37262	Throttle Link	1
209	650821	Screw	2
209A	651056	Screw	1
212	30773A	Bushing	1
212A	36288	Bushing	1
215	35440	Control Knob	1
217	37260	Bellcrank Lever	1
219	35689	Choke rod	1
220	35438	Choke Knob	1
222	28820	Screw	2
223	650971	Screw	2
*224	33515A	Intake Pipe Gasket	1
260	37092A	Blower Housing	1
262	29747B	Screw	2
264A	650738	Screw	1
265	37086	Cylinder Head Cover	1
266	650876	Screw	2
269	35762	Exhaust Gasket	2
270	37263	Exhaust Manifold	1
270A	35829A	Exhaust Port Liner	1
271	35293	Locking Plate	1
275	37264	Muffler	1
276	35348	Locking Plate	1
276A	31588	Locking Plate	1
277	650877	Screw	2
281	33013	Starter bubble Cover	1
282	650760	Screw	1
285	35985B	Starter Cup	1
287	29752	Nut & Lock Washer	4
290	30962	Fuel Line	1
291	29774	Fuel Line	1
292	26460	Fuel Line Clamp	4

Ref. No.	Part No.	Description	No. Used
295	35857	Fuel shut-Off Valve	1
298	650665	Screw	2
300	37099	Fuel Tank (Incl. Ref. #292 & 301)	1
301	36246	Fuel Cap	1
302	37098	Fuel Tank Extension	1
302A	650821	Screw	3
305	35554	Oil Fill Tube	1
307	35499	"O" Ring	1
308	35539	Fill Tube Clip	1
310	35700	Dipstick	1
314	650873	Screw	1
315	611111	Alternator Coil (18 Watt) (Incl. Ref. #323)	1
323	611118	Terminal	1
328	35062	Ignition Keys	2
329	610973	Terminal	1
335	37096	Carburetor Cover, Front	1
335A	37087	Carburetor Cover	1
338	650821	Screw	4
341	34154	Fuel Tank Bracket	1
342	650561	Screw	1
345	37097	Heat Baffle	1
345A	650821	Screw	1
350	570682A	Primer Asm.	1
351	32180C	Primer Line	1
355	590574	Starter Handle	1
370C	36501	Primer Decal	1
370H	37226	Choke Decal	1
370I	37119	Warning Decal	1
370K	36695	Starter Decal	1
380	640169	Carburetor (Incl. Ref. #184)	1
390	590749	Rewind Starter	1
396	33329D	Electric Starter Motor, 120 Volt (Optional)	1
400	37257	Gasket Set	1
420	730226	SAE 5W30 4-Cyc. Eng. Oil	1

*Included in Gasket Set 37257

Obtain Parts From Tecumseh



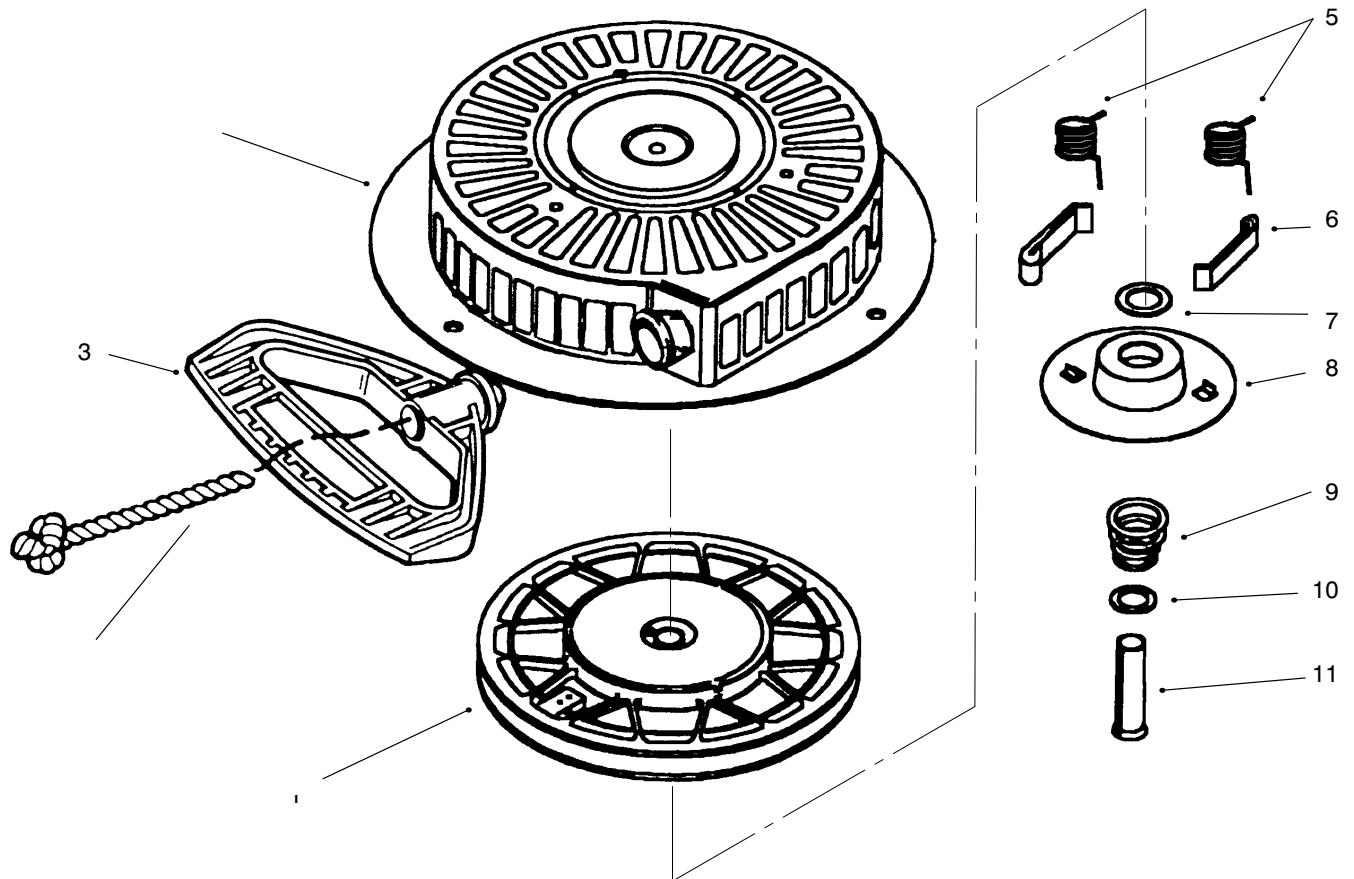
Recoil Starter # 590749

Ref. No.	Part No.	Description	No. Used
1	590599A	Pin – Spring (Incl. Ref. #4)	1
2	590600	Washer	1
3	590679	Retainer	1
4	590601	Washer	1
5	590678	Spring – Brake	1
6	590680	Dog – Starter	2

Ref. No.	Part No.	Description	No. Used
7	590412	Spring – Dog	2
8	590682	Pulley & Rewind Spring Assembly	1
11	590750	Starter Housing Asm	1
12	590535	Rope – Starter	1
‡3	590574	Handle – Mitten Grip	1

‡ Not Included with Starter

Obtain Parts From Tecumseh

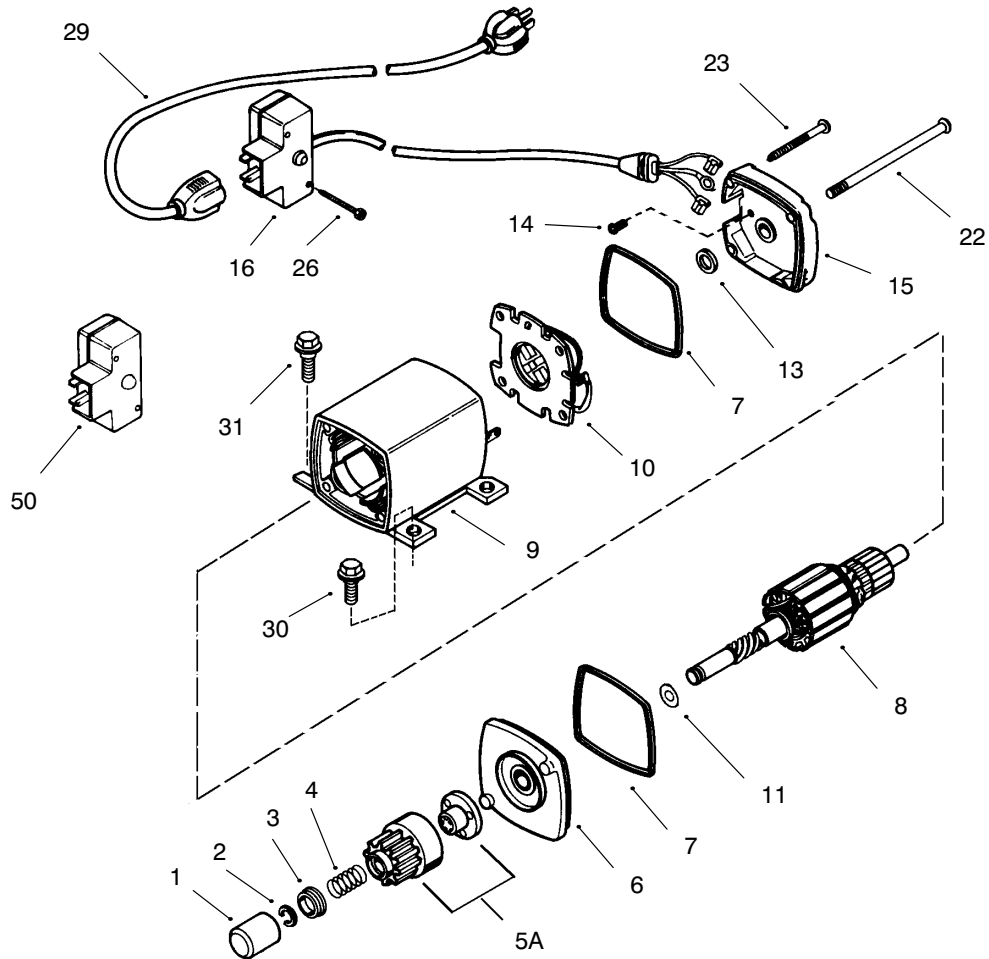


Recoil Starter Tecumseh # 590733 (Optional)

Ref. No.	Part No.	Description	No. Used	Ref. No.	Part No.	Description	No. Used
1	590709	Pulley & Rewind Spring Asm.	1	7	590601	Washer	1
2	590535	Rope – Starter	1	8	590696	Retainer	1
‡3	590574	Handle – Mitten Grip	1	9	590697	Spring – Brake	1
4	590734	Starter Housing Asm	1	10	590600	Washer	1
5	590699	Spring – Dog	2	11	590599A	Pin – Spring (Incl. Ref. #7)	1
6	590698	Dog – Starter	2				

‡Not Included in Starter Assembly.

Obtain Parts From Tecumseh



120 VOLT ELECTRIC STARTER NO. 33329D (OPTIONAL)

Ref. No.	Part No.	Description	No. Used
1	33451	Dust Cover	1
2	33842	Retainer Ring	1
3	33430	Spring Retainer	1
4	33431	Anti-drift Spring	1
5A	37050	Gear and Nut (Incl. Ref.# 2)	1
6	35449	Drive End Cap Asm. (Incl. Ref.# 7)	1
7	35450	O-Ring	2
8	35915	Armature	1
9	35451A	Housing Assembly	1
10	35452A	Brush Card Assembly	1
11	35911	Thrust Washer	1

Ref. No.	Part No.	Description	No. Used
13	590500	Thrust Washer	1
14	33441	Ground Screw	1
15	35453	Commutator End Cap Asm. (Incl. Ref.# 7)	1
16	35454	Switch Box Assembly (Incl. Ref# 26)	1
22	35455	Case Bolt	2
23	35456	Ground Screw	1
26	650819	Screw	2
29	32450A	Extension Cord	1
30	30063	Screw - Torx	2
31	650820	Screw	2
50	730623	Switch Repair Kit	1

Obtain Parts From Tecumseh

TORO PART NUMBER INDEX

3321-631 Rev A

Part No.	Qty.	Pg. No.	Ref. No.	Description	Part No.	Qty.	Pg. No.	Ref. No.	Description
3-0750	1	2	2	Washer	62-1290	7	1	1	Knob-Shift
3-4244	9	6	2	Pulley-Idler	62-1300	1	24	1	Pulley-Impeller
5-2490	9	34	2	Screw-Shoulder	62-1310	5	22	1	Traction-Sheave, Half
7-0045	3	18:2	1	Oil Seal	62-1320	8	17	1	Knob-Control, Chute
11-0590	4	25	4	Screw-Thread Forming	62-1330	9	26	2	Bolt-Shoulder
12-3270	5	43	3	Screw	62-1350	6	56	2	Bushing-Output
20-0980	2	58	2	Bearing	62-1381-03	8	9	1	RH Handle ASM, 24"-32"
20-0990	2	57	2	Flange-Bearing, Front	62-1430	1	11	3	Retainer-Chute
20-1000	2	59	2	Flange-Bearing, Rear	62-1440-01	1	32	1	Cover-Frame, Engine
25-5090	2	56	2	Spacer-Hub, Auger	62-1460	8	35	2	Gear-Universal
26-6110	1	39	1	Flange-Cup, Bearing	62-1470	7	42	1	Base-Lockout
26-6120	1	41	1	Flange-Cup, Bearing	62-1490	8	15	1	Plate-Guide
29-9570	6	60	1	Bushing-Yoke	62-1520	8	19	1	Cover-Knob
37-6560	3	9	1	Bushing-Input	62-1530	3	16	1	Shaft-Auger, 24"
38-7820	5	24	2	Bearing-Ball	62-1640	8	12	1	Lever-Trip
52-2861	2	44	4	Washer	62-1650	7	6	1	Spring-Torsion
53-7670	1	5	1	Decal-Warning, Auger (Only On: 38542)	62-1690	5	6	1	Cover-Detent
					62-1700	7	19	1	Lever-Lockout
62-0120	3	14	1	Gear-Helical	62-1710	7	16	1	Spring-Flat
62-0170	7	41	1	Wheel-Index	62-1720	1	23	1	Rod-Chute, Lower
62-0180	7	5	1	Tang-Index	62-1740	5	16	1	Bracket-Cable, F/R
62-0200	5	30	1	Gear, 27 T	63-2030	8	27	1	Cross Rod ASM
62-0210	5	49	1	Gear, 33 T	63-2080	1	28	1	Cover-Belt, Upper
62-0220	5	31	1	Gear, 34 T	63-2111	9	31	1	Axle ASM
62-0240	5	32	1	Gear, 45 T	63-2150-03	7	23	1	Control Frame ASM
62-0250	5	29	1	Gear, 29 T	63-2160	8	16	1	Crank-Rod, Chute
62-0260	5	50	1	Gear, 51 T	63-2170-03	8	1	1	Cover-Lock, Lever
62-0280	8	6	1	Latch-Locking	63-2180	1	7	1	Bracket-Worm, Chute
62-0290	8	4	1	Cam-Release	63-2190	5	5	1	Pin-Link, Gear Shift
62-0300	8	3	1	Tang-Locking	63-2200	7	39	1	Cable-Arm, Latch
62-0310	5	36	2	Key	63-2210	7	38	1	Cable-Gearbox
62-0320	5	33	1	Sleeve-Gear	63-2220	7	8	1	Extension Spring
62-0330	6	55	1	Shaft-Intermediate	63-2230	7	21	1	Spring-Extension
62-0340	5	27	1	Gear-Sleeve, 19 T	63-2240	7	17	1	Spring-Extension
62-0350	5	44	1	Pinion-Bevel	63-2270	7	40	1	Torsion Spring
62-0360	5	51	1	Gear, 19/41 T	63-2280	5	28	1	Washer-Thrust
62-0370	5	25	1	Gear, 41 T	63-2300	1	26	1	Retainer-Cable
62-0380	5	38	1	Hub-Pulley	63-2480	7	10	1	Decal-No. 2
62-0430	5	35	1	Collar-Shift	63-2510	8	38	1	Decal-Front Panel (824)
62-0470-03	9	20	1	Latch ASM	63-2600	5	15	1	Bellcrank
62-0480	6	58	1	Gearcase-Lower, Casing	63-2610	7	9	1	Pin-Tang
62-0490	6	57	1	Gearcase-Upper, Casing	63-2630	7	33	1	Bracket-Shift
62-0500	5	47	1	Gear-Bevel, 15 T	63-2650	7	18	2	Screw-Shoulder
62-0720-01	1	6	1	Housing ASM	63-2670	1	10	3	Plate-Retainer, Chute
62-0820	1	22	1	Gear-Worm	63-2700	8	42	1	Cable-Impeller
62-0840-03	1	19	1	Chute ASM	63-2710	8	41	1	Cable-Traction
62-0860	5	4	1	Link-Shift, Gear	63-2740	9	35	1	Spring-Latch, Torsion
62-0870	5	17	1	Lever-Shift, Gear	63-2810	9	2	1	Arm-Brake
62-0880	5	11	1	Lever	63-2830	7	34	1	Rod-Bent Shift, Lower
62-0920	4	8	1	Sheave-Half, Traction	63-2850	9	3	1	Idler Arm Bracket ASM
62-0930	4	6	1	Pulley-Engine, Center	63-2870	9	13	2	Spring-Extension
62-0940	4	4	1	Sheave-Half, Impeller	63-2880	9	14	1	Spring-Torsion
62-0970	9	8	1	Pin-Idler	63-2890	5	7	1	Spring-Detent
62-1000	9	32	1	Guard-Chain, RH	63-2900	1	17	2	Washer-Plastic
62-1010	9	29	1	Guard-Chain, LH	63-2910	8	7	1	Spring-Torsion
62-1020	5	14	1	Button-Detent	63-2920	5	9	1	Spring-Extension
62-1040	6	59	2	Yoke-Shift	63-2940	4	20	1	Chain
62-1050-03	8	8	1	Lever-Traction, RH	63-2951	4	7	1	Belt-Traction
62-1060-03	8	24	1	Lever-Traction, LH	63-2961	4	5	1	Belt-Impeller
62-1070	8	11	2	Bushing-Lever	63-2990-03	4	22	1	Transmission Frame ASM
62-1080	5	23	1	Shaft-Output	63-3020	1	14	1	Guard-Chute
62-1100	7	7	1	Lever Latch	63-3050	8	25	1	Decal-Lever (Only On: 38542)
62-1110	7	3	1	Lever-Wheel, Index					Clip-Guard, Chute
62-1120	7	22	1	Lever-Reverse, Switch	63-3130	1	12	1	Cover-Cable
62-1130	7	20	1	Lever-Reverse	63-3290	1	29	1	Washer-Support
62-1140	7	12	1	Cover-Latch	63-3340	9	22	4	Spacer-Lever, Traction
62-1150	3	15	1	Bushing-Worm	63-3380	8	22	1	Screw-Shoulder
62-1160	5	42	4	Bushing	63-3410	5	19	1	Bearing-Ball
62-1170	6	54	2	Bushing-Intermediate	63-3450	1	40	1	Decal-Warning (Only On: 38542)
62-1180	5	37	1	Bushing-Flange, Output	66-6860	8	40	1	
62-1190	5	2	1	Bracket-Bellcrank					
62-1230	8	37	1	Washer-Rubber					

*Not Illustrated

TORO PART NUMBER INDEX (Cont.)

Part No.	Pg. No.	Qty.	Ref. No.	Description	Part No.	Pg. No.	Qty.	Ref. No.	Description
66-6860	9	40	1	Decal-Warning (Only On: 38542)	253-149	3	4	1	Seal-Oil
66-6980-01	1	31	1	Engine Frame ASM	256-237	3	18:1	1	Bushing
66-7720	9	21	1	Rod-Latch	256-296	7	31	2	Bushing
66-7730	7	30	1	Clevis ASM	257-9	7	14	1	Washer-Thrust
66-7740	9	25	2	Pivot Arm ASM	257-10	5	41	4	Washer-Thrust
66-7762-01	2	47	1	Scraper Blade ASM	281-1	3	5	1	Plug-Sqh Pipe
66-7810	3	17	1	Shaft-Impeller	283-3	5	18	1	Pin-Clevis
66-7821-01	1	3	1	Plate-Side, RH	288-2	4	14	1	Cap-Pipe
66-7831-01	2	48	1	Plate-Side, LH	289-34	4	13	1	Nipple-Pipe
66-7850	8	10	2	Grip-Handle	321-3	2	61	8	Screw-HH
66-7910-03	2	51	1	Blade Impeller ASM	321-9	7	29	1	Screw-HH
66-8010	2	52	2	Spacer-Hub, Impeller	321-15	5	52	1	Screw-HH
66-8030	4	21	1	Traction Gearcase ASM	321-44	2	53	2	Screw-HHF
66-8060	9	42	1	Pad-brake	322-12	2	60	2	Screw-HH
66-8091-03	8	29	1	LH Handle ASM, 24"-32"	323-4	1	1	2	Screw-HH
67-5860	5	39	1	Gear-Bevel, Rev, 36t	323-7	9	7	2	Screw-HH
67-5870	5	45	1	Bevel Gear 36 T	3210-1	4	9	2	Screw-HH
67-5880	5	40	1	Collar-Shift	3212-8	4	1	1	Screw-HH
67-9220	9	36	2	Wheel And Tire ASM	3220-3	4	17	1	Nut-Jam
67-9240	7	2	1	Rod-Shift	3220-3	7	35	1	Nut-Jam
67-9250	7	28	1	Retainer-Rod, Shift	3230-2	1	8	1	Screw-CARR
68-4100	1	35	1	Plate ASM-Frame, RH	3230-23	2	49	9	Screw-CARR
68-4110	1	34	1	Plate ASM-Frame, LH	3234-5	2	46	4	Screw-HHF
68-4310	5	48	1	Gear, 26 T	3234-7	4	16	4	Screw-HHF
68-4320	5	34	1	Sleeve-Shift	3234-7	9	41	2	Screw-HHF
68-7450-03	2	55	1	Auger ASM, RH	3234-13	9	5	1	Screw-HHF
68-7460-03	2	55	1	Auger ASM, LH	3234-28	1	4	12	Screw-HHF
68-7510-03	4	11	1	Belt Guide ASM	3242-4	1	25	2	Screw-Sqh
68-8410	1	42	1	Cover-Belt, Lower	3253-4	4	10	2	Washer-Lock/Sp
74-1440-01	2	45	2	Skid ASM, Welded	3253-6	4	2	1	Washer-Lock/Sp
74-1540	3	18	1	Auger Gearcase ASM, LH	3256-1	7	27	2	Washer-Flat
74-1550	3	19	1	Auger Gearcase ASM, RH	3256-1	9	24	2	Washer-Flat
74-1560	2	54	1	Auger Gearcase ASM	3256-14	1	16	1	Washer-Flat
78-2920	4	18	1	Ball-Joint	3256-14	8	31	2	Washer-Flat
78-2920	7	36	1	Ball-Joint	3256-23	1	43	1	Washer-Flat
88-0810	8	43	1	Spring-Extension	3256-23	7	24	3	Washer-Flat
93-8045	9	10	1	Traction Idler Arm ASM	3256-38	9	12	1	Washer-Flat
93-8046	9	11	1	Impeller Idler Arm ASM	3256-41	4	3	1	Washer-Flat
94-2559	1	21	1	Decal - Danger (Only On: 38546)	3256-61	1	20	1	Washer-Flat
94-2568	1	5	1	Decal - Warning (Only On: 38546)	3257-10	3	8	1	Key-Woodruff
94-2575	8	40	1	Decal - Adjustment (Only On: 38546)	3257-23	1	36	1	Key-Woodruff
94-2575	9	40	1	Decal - Adjustment (Only On: 38546)	3269-23	1	30	4	Rivet-Pop
94-2782	4	27	1	Cap-Wire, Lite	3272-1	5	1	1	Pin-Cotter
94-4496	9	33	3	Screw-Pan Hd.	3274-13	1	13	3	Screw-HSH
94-6961	7	11	2	Screw	3290-243	9	37	2	Pin-Lynch
94-6961	8	33	2	Screw	3290-320	7	15	1	Retainer-Push On
94-8079	1	21	1	Decal-Danger (Only On: 38542)	3290-320	8	18	2	Retainer-Push On
95-7947	4	24	2	Cap-Plug	3290-326	1	15	2	Nut-Push
99-3229	8	14	1	Decal-Control (Only On: 38546)	3290-359	8	28	1	Screw-HWH
99-3230	8	14	1	Decal-Top, Panel (Only On: 38542)	3290-378	8	32	2	Tie-Cable
99-5968	8	13	1	Control Plate ASM (Only On: 38542)	3290-422	7	4	1	Nut-Push
99-5969	8	13	1	Control Plate ASM (Only On: 38546)	3290-456	7	37	1	Washer-Belleville
2210-250	8	2	3	Screw-HH	3290-461	4	23	4	Washer-Spring
231-120	9	36:1	1	Tire	3290-461	9	19	2	Washer-Spring
232-46	9	36:2	1	Tube	3290-476	9	38	1	Fastener-Panel
241-128	9	36:3	1	Wheel	3290-477	5	20	1	Washer-Curved
252-59	5	26	3	Bearing-Thrust	3296-2	1	9	4	Nut-Lock Ni
252-71	3	1	2	Bearing-Thrust	3296-2	8	23	1	Nut-Lock Ni
252-76	3	2	1	Bearing Thrust	3296-6	4	19	1	Nut-Lock Ni
252-78	3	3	2	Bearing-Thrust	3296-6	7	32	1	Nut-Lock Ni
252-80	1	38	1	Bearing-Thrust	3296-23	9	27	2	Nut-Lock Ni
252-80	9	28	4	Bearing-Thrust	3296-29	1	37	14	Nut-Lock Ni
					3296-29	7	25	7	Nut-Lock Ni
					3296-39	9	18	2	Nut-Lock Ni
					3296-42	2	50	10	Nut-Lock Ni
					3296-42	5	21	1	Nut-Lock Ni
					3296-42	7	26	1	Nut-Lock Ni
					3296-42	9	4	1	Nut-Lock Ni
					3296-47	2	62	20	Nut-Lock Ni
					3296-47	8	39	4	Nut-Lock Ni
					3296-47	9	39	2	Nut-Lock Ni
					3296-59	9	9	2	Nut-Lock Ni

*Not Illustrated

TORO PART NUMBER INDEX (Cont.)

Part No.	Pg. No.	Qty.	Ref. No.	Description	Part No.	Pg. No.	Qty.	Ref. No.	Description
32104-71	5	13	1	Screw-HWH	32128-32	6	53	1	Nut-Hex, Flange
32104-76	8	30	2	Screw-Acorn Slot	32144-4	1	27	5	Screw-HH
32104-95	5	3	2	Screw-HWH	32144-4	5	8	2	Screw-HH
32120-46	7	13	1	Ring-Retaining	32144-4	9	23	2	Screw-HH
32120-46	9	1	2	Ring-Retaining	32144-14	1	33	6	Screw-HWH
32121-9	9	30	2	Pin-Spring	32144-14	8	26	6	Screw-HWH
32121-50	8	36	2	Pin-Spring	32144-86	5	10	6	Screw-HH
32121-106	5	12	1	Pin-Spring	32144-110	3	6	9	Screw-HWH
32121-120	6	64	2	Pin-Spring	32151-33	3	7	1	Ring-Retaining, Ext.
32122-32	1	18	1	Screw	32151-66	8	5	1	E-Ring-Retainer
32128-20	4	15	4	Nut-Hex Flange					

