



ProLine

44" Side Discharge Cutting Unit

Model No. 30149 – 990001 & Up

Parts Catalog

ORDERING REPLACEMENT PARTS

To order replacement parts, please supply: the part number, the quantity, and the description of each part desired.

Contents

Description	Page	Description	Page
Deck And Covers	1	Carrier Frame	3
Spindle Asm, And Idlers	2	Decals	4

Part Description Abbreviations

Part descriptions in this catalog may include the following abbreviations.

Abbreviation	Meaning	Abbreviation	Meaning
AR	as required	HWHTF	hex washer head thread forming
ASM	assembly	INC	incorporated
CARR	carriage	LH	left hand
DEG	degrees	PH	pan head
FH	flat head	PPH	Phillips pan head
GA	gauge	PTO	power take off
HF	hex flange	RH	right hand
HFV	hex flange washer	SFH	slotted fillister head
HH	hex head	SH	square head
HHF	hex head flange	SHWH	slotted hex washer head
HHST	hex head self tapping	SPH	slotted pan head
HJ	hex jam	STD	standard
HOC	height-of-cut	TAP	self tapping
HS	hex socket	TH	truss head
HSBH	hex socket button head	TTH	Torx truss head
HSFH	hex socket flat head	WH	wing head
HSH	hex socket head		
HWH	hex washer head		

Important Format Explanations

This catalog uses special formats to convey information in illustrations and parts lists. Specifically, one format is used in conjunction with service assemblies and another with quantities associated with reference numbers.

Service Assemblies

Parts within service assemblies have reference numbers in the form X:Y. X is the reference number of the service assembly and Y is a sequential number unique to each part within the service assembly.

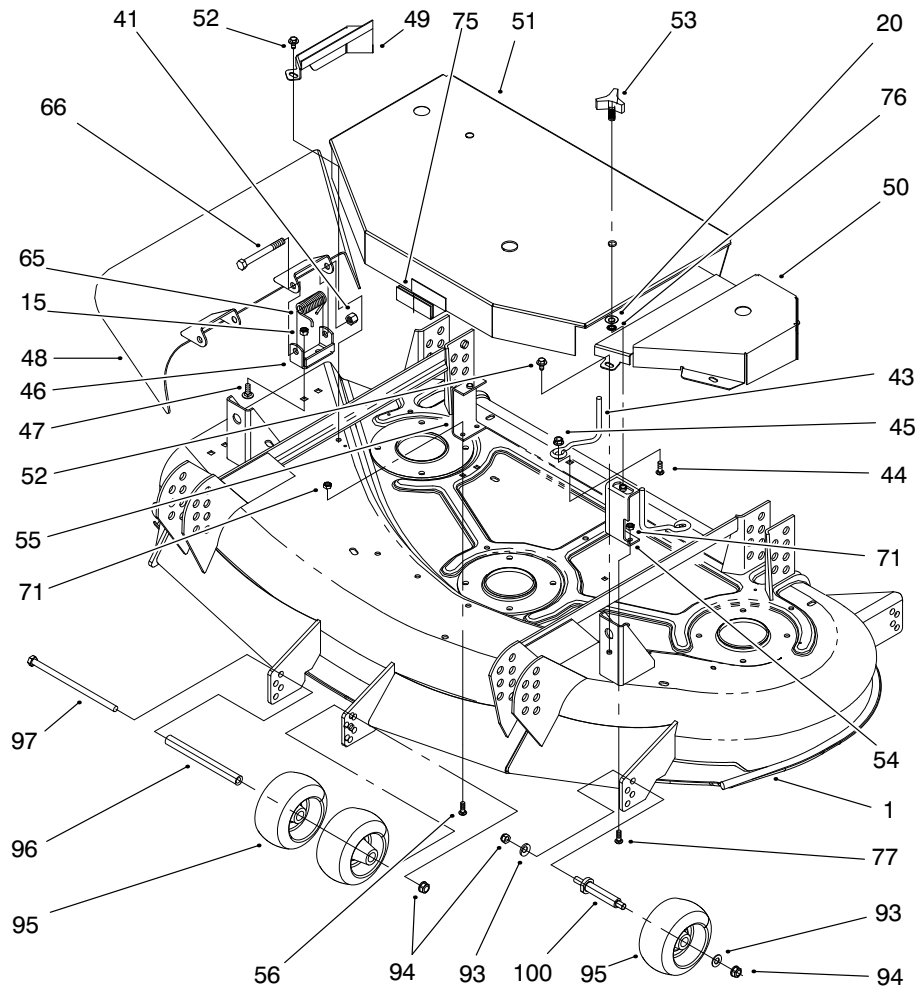
For example, a wheel assembly might be identified by reference number 6, the tire by 6:1, the valve by 6:2, and the wheel by 6:3. When you order the assembly identified by reference number 6, you receive all parts identified by reference numbers 6:1, 6:2, and 6:3. However, you may also order any part individually.

Reference numbers of this type appear in part lists and as callouts in illustrations.

Reference Numbers with Quantities

Illustrations may have a quantity in parentheses next to a reference number, in the form $X (Y)$. X is the reference number. Y in parentheses is the quantity of the part identified by the reference number.

For example, the illustration callout 4 (2) indicates that two parts are used in that instance.

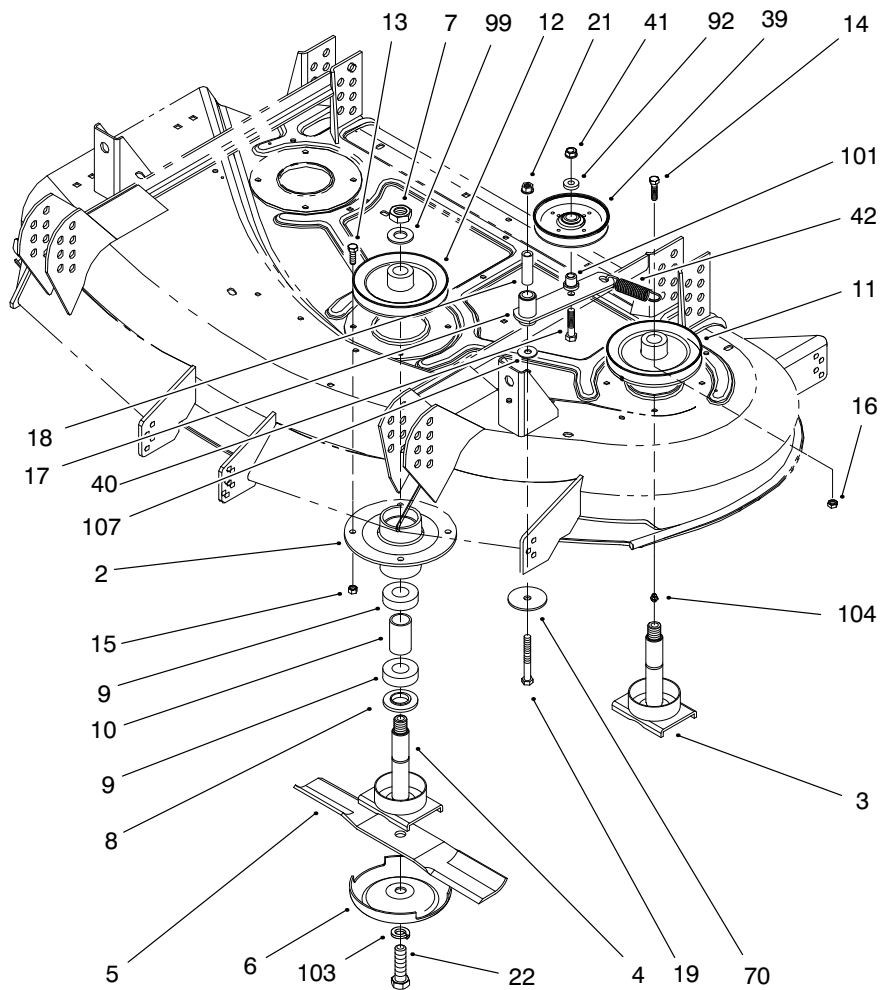


Sheet No.: 2

Deck And Covers Assembly

Ref. No.	Part No.	Qty.	Description
1	99-6448	1	44" Deck w/Decals
15	32152-1	4	Nut-Lock
20	3256-24	2	Washer-Flat
41	3296-5	2	Nut-Lock
43	52-4780	2	Rod-Belt
44	3230-2	2	Screw-CARR
45	32128-13	2	Nut-Lock Flange
46	29-5590-03	2	Bracket-Pivot
47	3230-18	4	Screw-CARR
48	13-3899	1	Deflector-Grass
49	54-2250	1	Cover-RH
50	54-2220	1	Cover-LH
51	54-3190	1	Cover-Center
52	46-8560	5	Screw-HHF
53	62-6520	2	Knob
54	54-3240	1	Bracket-Cover LH
55	54-3230	1	Bracket-Cover RH
56	3229-1	2	Bolt-CARR
65	40-6230	2	Spring-Torsion
66	3211-15	2	Screw-HH
71	3296-42	4	Nut-Lock
75	29-0641	5	Jiffy Trim
76	32151-72	2	Ring-Retaining
77	3229-3	2	Bolt-CARR
93	3256-24	4	Washer-Flat
94	3296-39	5	Nut-Lock

Ref. No.	Part No.	Qty.	Description
95	68-2730	4	Wheel-Gage
96	98-5967	1	Spacer-Wheel
97	323-28	1	Screw-HH
100	99-2842	2	Spacer-Wheel

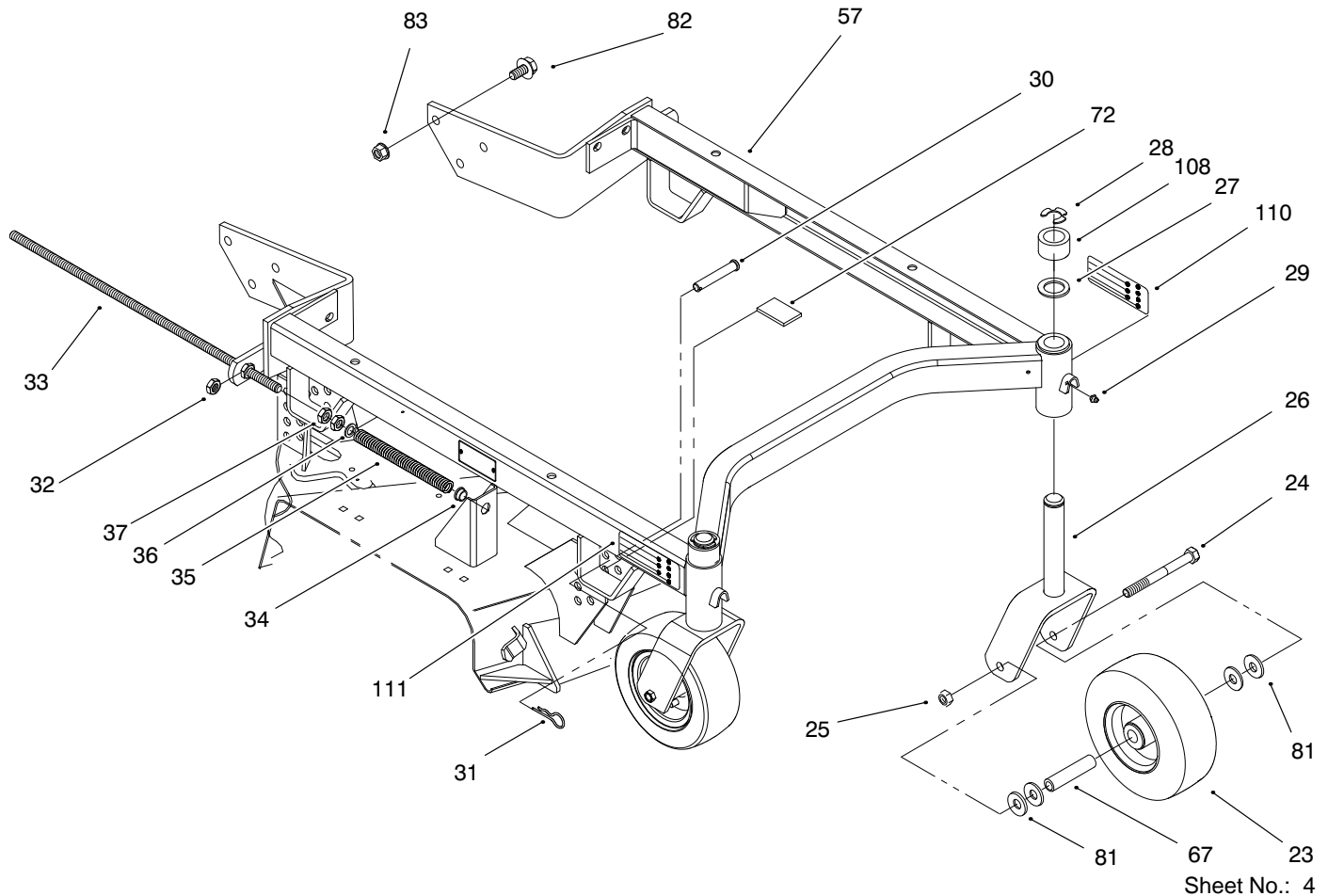


Sheet No.: 3

Spindle And Idlers Assembly

Ref. No.	Part No.	Qty.	Description
2	67-7590	3	Housing-Spindle
3	71-2780	2	Shaft-Spindle Outer
4	71-2790	1	Shaft-Spindle Center
5	54-0010	1	Blade
6	67-7561	3	Cup-Anti-Scalp
7	32146-20	3	Nut-Lock
8	67-7570	3	Spacer-Spindle
9	251-257	6	Bearing
10	67-7580	3	Spacer-Bearing
11	67-7690	2	Pulley-Outer
12	67-7650	1	Pulley-Center
13	322-4	11	Screw-HH
14	322-6	1	Screw-HH
15	32152-1	12	Nut-Lock
16	3218-2	1	Nut-Hex Jam
17	92-1657	1	Arm & Bushing-Idler
18	79-2760	1	Spacer-Pivot
19	323-13	1	Screw-HH
21	32128-19	1	Nut-HF
22	51-4060	3	Bolt-Blade
39	65-5940	1	Pulley-Idler
40	3211-8	1	Screw-HH
41	3296-5	1	Nut-Lock
42	54-2730	1	Spring-Extension
70	20-9530	1	Washer-End
92	7-0081	1	Washer-Special

Ref. No.	Part No.	Qty.	Description
99	7-4150	3	Washer
101	65-5950	1	Bushing-Pulley
103	3253-8	3	Washer-Lock
104	302-2	3	Fitting-Grease
107	52-2860	1	Washer

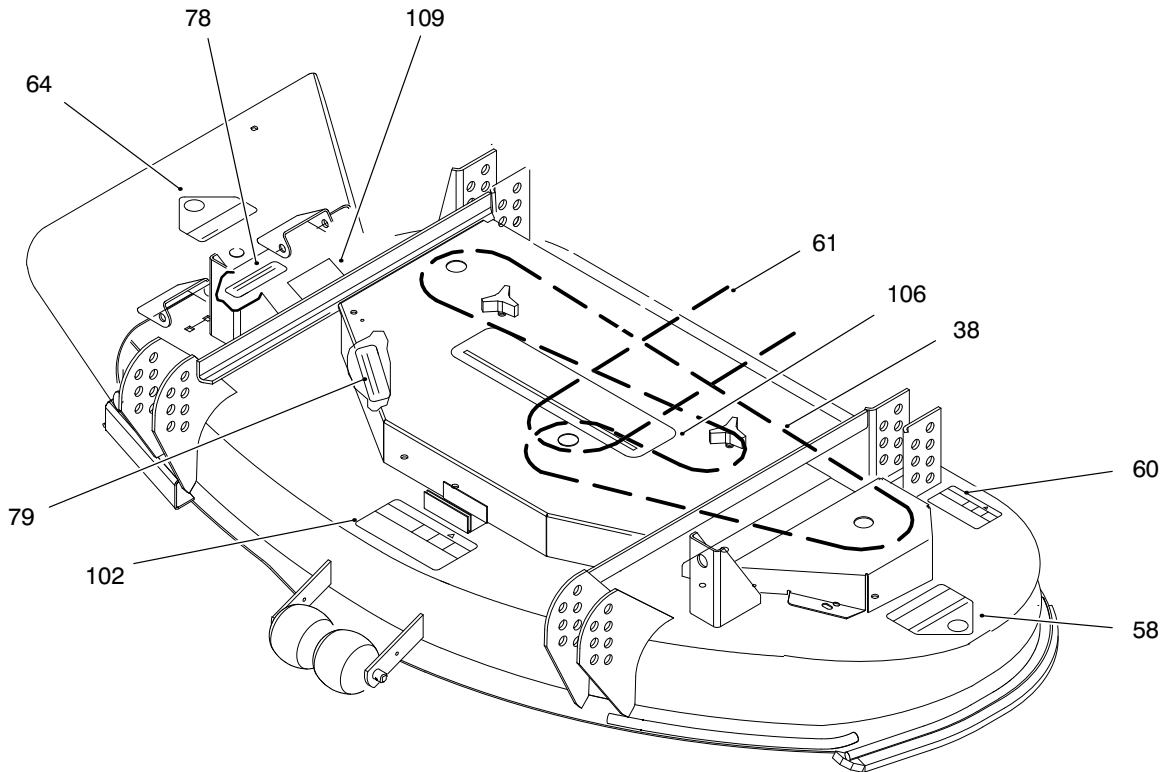


Carrier Frame

Ref. No.	Part No.	Qty.	Description
23	98-2859	2	Wheel & Tire ASM
*23:3	62-5580	4	Bearing-Outside
*23:4	62-5570	2	Bearing-Roller
*23:5	232-27	2	Valve Stem
*23:6	302-11	2	Fitting-Grease
24	325-19	2	Screw-HH
25	32153-5	2	Nut-Lock
26	98-2857	2	Castor Fork ASM
27	3-6781	8	Washer-Thrust
28	32151-91	2	Ring-Retaining
29	302-5	2	Fitting-Grease
30	283-55	4	Pin-Clevis
31	3290-355	4	Pin-Hair
32	3296-45	2	Nut
33	74-0310	2	Shaft-Adjusting
34	256-156	2	Bushing-Flange
35	74-0290	2	Spring-Compression
36	41-8440	2	Spacer-Hardened
37	3218-5	4	Nut-Jam
57	94-4175	1	Suspension
67	68-8980	2	Bushing-Spanner
72	74-0340	4	Cushion-Rubber
81	3256-6	8	Washer-Flat
82	3234-6	6	Screw-HF
83	32128-23	6	Nut-Lock
108	93-1167	2	Spacer-Castor

Ref. No.	Part No.	Qty.	Description
110	85-7450	1	Decal-HOC LH
111	85-7460	1	Decal-HOC RH

* Not Illustrated



Sheet No.: 5

Decals

Ref. No.	Part No.	Qty.	Description
38	27-1160	1	"v" Belt Deck
58	43-8480	1	Decal-Danger
60	68-8340	1	Decal-Torque
61	54-2750	1	"v" Belt-Drive
64	93-1122	1	Decal-Danger
78	66-6380	1	Decal-Danger
79	67-5360	1	Decal-Danger
102	66-1340	1	Decal-Discharge
106	98-8028	1	Decal-Sfs
109	98-3269	1	Decal-Made In USA

Ref. No.	Part No.	Qty.	Description

TORO PART NUMBER INDEX

Part No.	Pg. No.	Ref. No.	Qty.	Description	Part No.	Pg. No.	Ref. No.	Qty.	Description
3-6781	3	27	8	Washer-Thrust	93-1167	3	108	2	Spacer-Castor
7-0081	2	92	1	Washer-Special	94-4175	3	57	1	Wa-Suspension
7-4150	2	99	3	Washer	98-2857	3	26	2	Castor Fork ASM
20-9530	2	70	1	Washer-End	98-2859	3	23	2	Wheel & Tire ASM
27-1160	4	38	1	"v" Belt Deck	98-3269	4	109	1	Decal-Made In USA
29-0641	1	75	5	Jiffy Trim	98-5967	1	96	1	Spacer-Wheel
29-5590-03	1	46	2	Bracket-Pivot	98-8028	4	106	1	Decal-Sfs
40-6230	1	65	2	Spring-Torsion	99-2842	1	100	2	Spacer-Wheel
41-8440	3	36	2	Spacer-Hardened	99-6448	1	1	1	44" Deck W.a.
43-8480	4	58	1	Decal-Danger	232-27	3	23:5	2	Valve Stem
46-8560	1	52	5	Screw-HHF	251-257	2	9	6	Bearing
51-4060	2	22	3	Bolt-Blade	256-156	3	34	2	Bushing-Flange
52-2860	2	107	1	Washer	283-55	3	30	4	Pin-Clevis
52-4780	1	43	2	Rod-Belt	302-2	2	104	3	Fitting-Grease
54-0010	2	5	1	Blade	302-5	3	29	2	Fitting-Grease
54-2220	1	50	1	Cover-LH	302-11	3	23:6	2	Fitting-Grease
54-2250	1	49	1	Cover-RH	322-4	2	13	11	Screw-HH
54-2730	2	42	1	Spring-Extension	322-6	2	14	1	Screw-HH
54-2750	4	61	1	"v" Belt-Drive	323-13	2	19	1	Screw-HH
54-3190	1	51	1	Cover-Center	323-28	1	97	1	Screw-HH
54-3230	1	55	1	Bracket-Cover RH	325-19	3	24	2	Screw-HH
54-3240	1	54	1	Bracket-Cover LH	3211-8	2	40	1	Screw-HH
13-3899	1	48	1	Deflector-Grass	3211-15	1	66	2	Screw-HH
62-5570	3	23:4	2	Bearing-Roller	3218-2	2	16	1	Nut-Hex Jam
62-5580	3	23:3	4	Bearing-Outside	3218-5	3	37	4	Nut-Jam
62-6520	1	53	2	Knob	3229-1	1	56	2	Bolt-CARR
65-5940	2	39	1	Pulley-Idler	3229-3	1	77	2	Bolt-CARR
65-5950	2	101	1	Bushing-Pulley	3230-2	1	44	2	Screw-CARR
66-1340	4	102	1	Decal-Discharge	3230-18	1	47	4	Screw-CARR
66-6380	4	78	1	Decal-Danger	3234-6	3	82	6	Screw-HF
67-5360	4	79	1	Decal-Danger	3253-8	2	103	3	Washer-Lock
67-7561	2	6	3	Cup-Anti-Scalp	3256-6	3	81	8	Washer-Flat
67-7570	2	8	3	Spacer-Spindle	3256-24	1	20	2	Washer-Flat
67-7580	2	10	3	Spacer-Bearing	3256-24	1	93	4	Washer-Flat
67-7590	2	2	3	Housing-Spindle	3290-355	3	31	4	Pin-Hair
67-7650	2	12	1	Pulley-Center	3296-5	1	41	2	Nut-Lock
67-7690	2	11	2	Pulley-Outer	3296-5	2	41	1	Nut-Lock
68-2730	1	95	4	Wheel-Gage	3296-39	1	94	5	Nut-Lock
68-8340	4	60	1	Decal-Torque	3296-42	1	71	4	Nut-Lock
68-8980	3	67	2	Bushing-Spanner	3296-45	3	32	2	Nut
71-2780	2	3	2	Shaft-Spindle Outer	32128-13	1	45	2	Nut-Lock Flange
71-2790	2	4	1	Shaft-Spindle Center	32128-19	2	21	1	Nut-HF
74-0290	3	35	2	Spring-Compression	32128-23	3	83	6	Nut-Lock
74-0310	3	33	2	Shaft-Adjusting	32146-20	2	7	3	Nut-Lock
74-0340	3	72	4	Cushion-Rubber	32151-72	1	76	2	Ring-Retaining
79-2760	2	18	1	Spacer-Pivot	32151-91	3	28	2	Ring-Retaining
85-7450	3	110	1	Decal-HOC LH	32152-1	1	15	4	Nut-Lock
85-7460	3	111	1	Decal-HOC RH	32152-1	2	15	12	Nut-Lock
92-1657	2	17	1	Arm & Bushing-Idler	32153-5	3	25	2	Nut-Lock
93-1122	4	64	1	Decal-Danger					

*Not Illustrated