



# 135-0192

## Spreader Attachment Setup Instructions

Serial Nos. 402,082,300 & Higher

### ⚠ WARNING

#### CALIFORNIA Proposition 65 Warning

This product contains a chemical or chemicals known to the State of California to cause cancer, birth defects, or reproductive harm.

## Loose Parts

Use the chart below to verify that all parts have been shipped. Part numbers not shown are available on the dealer extranet.

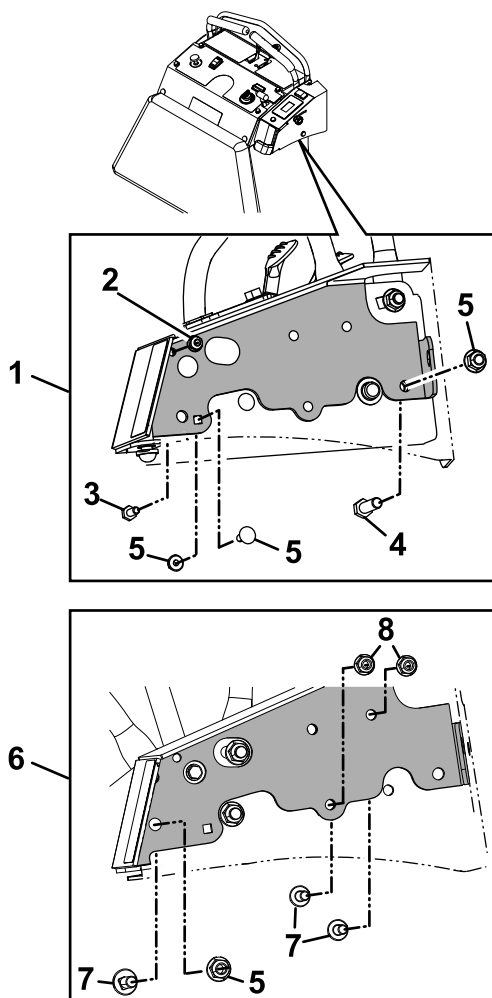
Dealer Pack			
Part No.	Description	Qty.	Use
323-7	Screw-HH 3/8-16 x 1 1/4 [Aer30]	1	Installing the Flow Control Panel
104-7201	Nut-Nyloc 1/4-20 Flg [Aer30]	1	
321-3	Screw-HH 1/4-20 x 5/8 [Aer30]	1	
3234-47	Screw-HH FLG 5/16-18 x 3/4 [Aer24]	3	
104-8300	Nut-Nyloc 5/16-18 Flg [Aer24]	3	
—	Assembly-Hopper	1	Installing the Hopper Assembly
3290-256	Pin-Hair	1	
126-8637	Pin-Hitch	1	
135-0857-03	Bracket-Cable [Aer24]	1	Installing the Cable Mount Bracket
3230-22	Bolt-Carriage 5/16-18 x 1 Sp [Aer24]	1	
3229-2	Bolt-Carriage 1/4-20 x 1 [Aer24]	1	
104-7201	Nut-Nyloc 1/4-20 Flg [Aer24]	1	
126-8634-03	Bracket-Cable [Aer30]	1	
104-7201	Nut-Nyloc 1/4-20 Flg [Aer30]	2	
321-3	Screw-HH 1/4-20 x 5/8 [Aer30]	2	
135-0841	Cable-Control	1	Installing the Control Cable
135-0700	Harness	1	Installing the Harness
1-303287	Tie-Cable	10	
126-2815	Cover	1	Installing the Cover
3256-22	Washer	4	
104-7201	Nut-Nyloc 1/4-20 Flg	4	
32105-15	Screw- HWH Machine 1/4-20 x 3/4	4	
—			Fill out the online warranty registration form.



## Installing the Flow Control Panel

**Important:** Be sure the machine is not running and the key has been removed from the ignition switch prior to proceeding with this installation.

1. Hold the flow control panel against the right side of the aerator to determine the mounting hole configuration. Remove and retain the mounting hardware, where the bracket will be installed, from the aerator.



**Figure 1**

Outer cover hidden for clarity

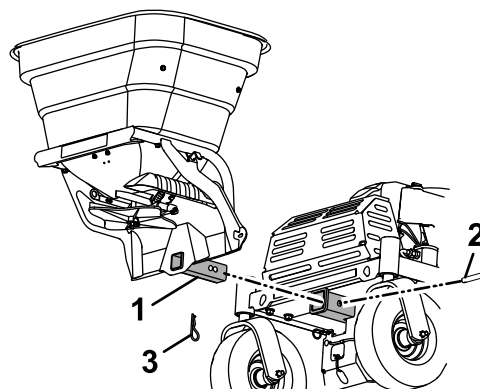
- |                                  |   |
|----------------------------------|---|
| 1. Aerator 30 installation       | 5. Reuse retained hardware              |
| 2. 1/4 inch flanged nyloc nut    | 6. Aerator 24 installation              |
| 3. 1/4-20 x 5/8 inch hex screw   | 7. 5/16-18 x 3/4 inch flanged hex screw |
| 4. 3/8-16 x 1 1/4 inch hex screw | 8. 5/16 inch flanged nyloc nut          |

2. Place the flow control panel onto the aerator and secure using the hardware shown in Figure 1.

**Note:** There is additional hardware in the bolt bag if the retained hardware is not long enough to mount the control panel.

## Installing the Hopper Assembly

1. Insert the hopper hitch tube into the receiver on the aerator.



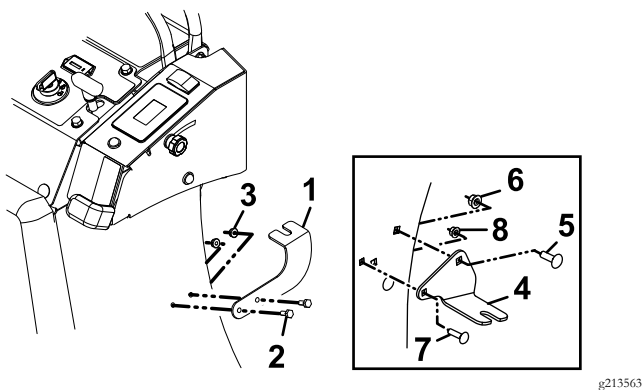
**Figure 2**

- |                      |               |
|----------------------|---------------|
| 1. Hopper hitch tube | 3. Cotter pin |
| 2. Hitch pin         |               |

2. Use the hitch pin and cotter pin to secure the hopper assembly to the aerator.

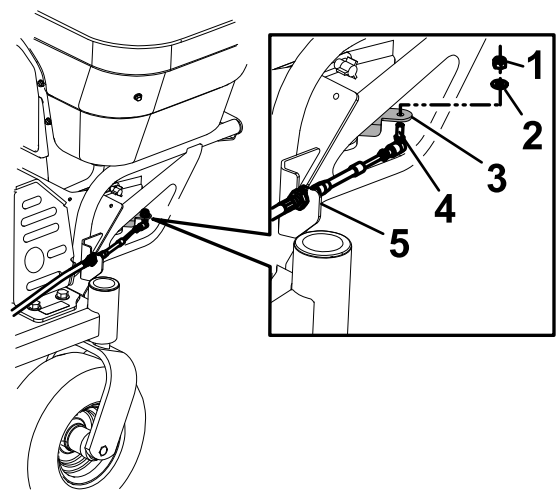
## Installing the Cable Mount Bracket

Choose the appropriate cable mount bracket from the bolt bag by matching the holes to the right side of the aerator. Use the hardware shown in Figure 3 to install the bracket.



**Figure 3**

- |                                |                                   |
|--------------------------------|-----------------------------------|
| 1. Aerator 30 side bracket     | 5. 5/16-18 x 1 inch carriage bolt |
| 2. 1/4-20 x 5/8 inch hex screw | 6. Reuse nut                      |
| 3. 1/4 inch flanged nyloc nut  | 7. 1/4-20 x 1 inch carriage bolt  |
| 4. Aerator 24 side bracket     | 8. 1/4 inch flanged nyloc nut     |

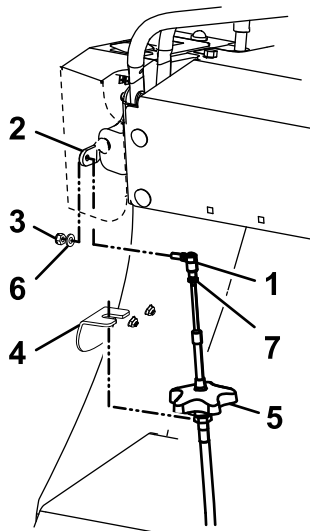


**Figure 5**

- |                          |                   |
|--------------------------|-------------------|
| 1. 1/4-28 inch nyloc nut | 4. Cable end      |
| 2. Washer                | 5. Hopper bracket |
| 3. Gate arm              |                   |

## Installing the Control Cable

1. Making sure the cable ball joint is securely attached to the cable, connect it to the control arm and secure with a washer and 1/4-28 inch nyloc nut as shown in Figure 4.



**Figure 4**

- |                          |            |
|--------------------------|------------|
| 1. Cable ball joint      | 5. Knob    |
| 2. Control lever         | 6. Washer  |
| 3. 1/4-28 inch nyloc nut | 7. Jam nut |
| 4. Cable mount bracket   |            |

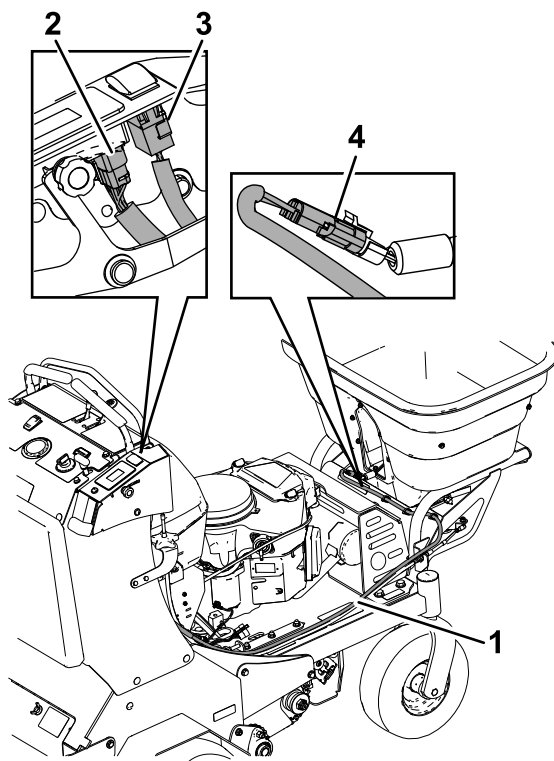
2. Loosen the knob and slide the control cable into the notch of the mount bracket and tighten the knob.
3. Route the other end of the control cable to the gate arm.

4. Insert the cable end into the hole of the gate arm; secure the cable end with a washer and 1/4-28 inch nyloc nut (see Figure 5).
5. Loosen the nuts on each side of the control cable and slide into the notch of the hopper bracket. Tighten the nuts on each side of the bracket.
6. Move the flow control lever forward and rearward making sure the gate arm is opening and fully closing. If it is not closing, loosen the knob and/or nuts to adjust the cable until the gate can be fully closed; retighten all components. Make sure the jam nut has been securely tightened against the cable ball joint after all adjustments have been made (see Figure 4).

## Installing the Harness

**Important:** Be sure the machine is not running and the key has been removed from the ignition switch prior to proceeding with the harness installation.

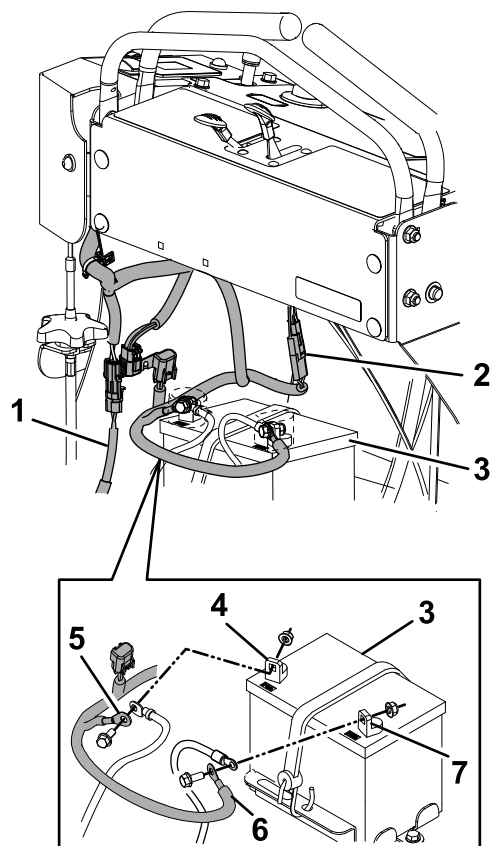
1. Disconnect the negative battery cable from the battery.
2. Plug the hour meter and ON/OFF connectors on the spreader harness into the switches on flow control panel (see Figure 6).



**Figure 6**

- |                         |                    |
|-------------------------|--------------------|
| 1. Harness              | 3. On/Off switch   |
| 2. Hour meter connector | 4. Motor connector |

g213636



**Figure 7**

g213682

3. Route the harness along the right side of the machine, following the control cable. Place the harness on top of the control cable and slide it into the notch of the hopper bracket. Continue to route the harness between RH hopper bracket and hopper tube. Connect the spreader harness to the spreader motor as shown in Figure 6. Insert the three harness tie clips into the holes of the hopper mainframe to secure the harness.
4. Remove the cap from the accessory wire on the main harness and plug into the spreader accessory harness as shown in Figure 7.

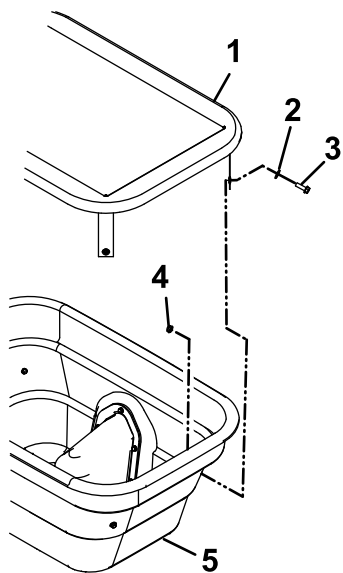
**Note:** On 24 inch models, remove the adapter plug from the main accessory harness.

1. Spreader harness
2. Accessory plug
3. Battery
4. Positive battery terminal
5. Spreader harness positive battery connection
6. Spreader harness negative battery connection
7. Negative battery terminal

5. Remove and retain the nut and screw from the positive terminal on the battery. Install the accessory harness positive cable (second to last terminal ring—see Figure 7) and the positive cable of the main harness to the front of the positive battery terminal and secure with the nut and screw. Repeat for negative battery cable.
6. Use the edge clip to secure the harness to the RH aerator panel.
7. Use the remaining zip ties to secure the harness to the frame and/or control cable.

## Installing the Cover

1. Attach the cover to the hopper, in two places, by inserting 1/4–20 x 3/4 inch machine hex screw and washer through the cover tab grommet and hopper as shown in Figure 8.



g221638

**Figure 8**

- |           |  |
|-----------|--|
| 1. Cover  | 3. 1/4-20 x 3/4 inch machine hex screw |
| 2. Washer | 4. 1/4 inch flanged nut                |

- 
2. Secure with 1/4 inch flanged nyloc nut.
  3. Plug the other two holes in the hopper with remaining hardware.

## Fill Out Warranty Registration Form

Fill out the online warranty registration form.