



**Count on it.**

**Parts Catalog**

**FP-2200**

**Forward Plate Compactor**

Model No. 68025—Serial No. 402300000 and Up



# Ordering Replacement Parts

To order replacement parts, please supply the part number, the quantity, and the description of each part desired.

## Understanding Reference Numbers

Each identified part in an illustration has a reference number. The reference number for a part also appears in the parts list, along with other information about the part.

This catalog uses two special reference number formats, one to indicate parts in a service assembly and another to indicate the quantity of a given part in an illustration.

## Service Assembly Reference Numbers

Parts in service assemblies have reference numbers in the form a:b. The a represents the reference number of the entire service assembly and the b represents a sequential number unique to each part within the service assembly.

For example, a wheel assembly might be identified by reference number 6, the tire by 6:1, the valve by 6:2, and the wheel by 6:3. When you order the assembly identified by reference number 6, you receive all parts identified by reference numbers 6:1, 6:2, and 6:3. However, you may also order any part individually. Reference numbers of this type appear in illustration and in parts lists.

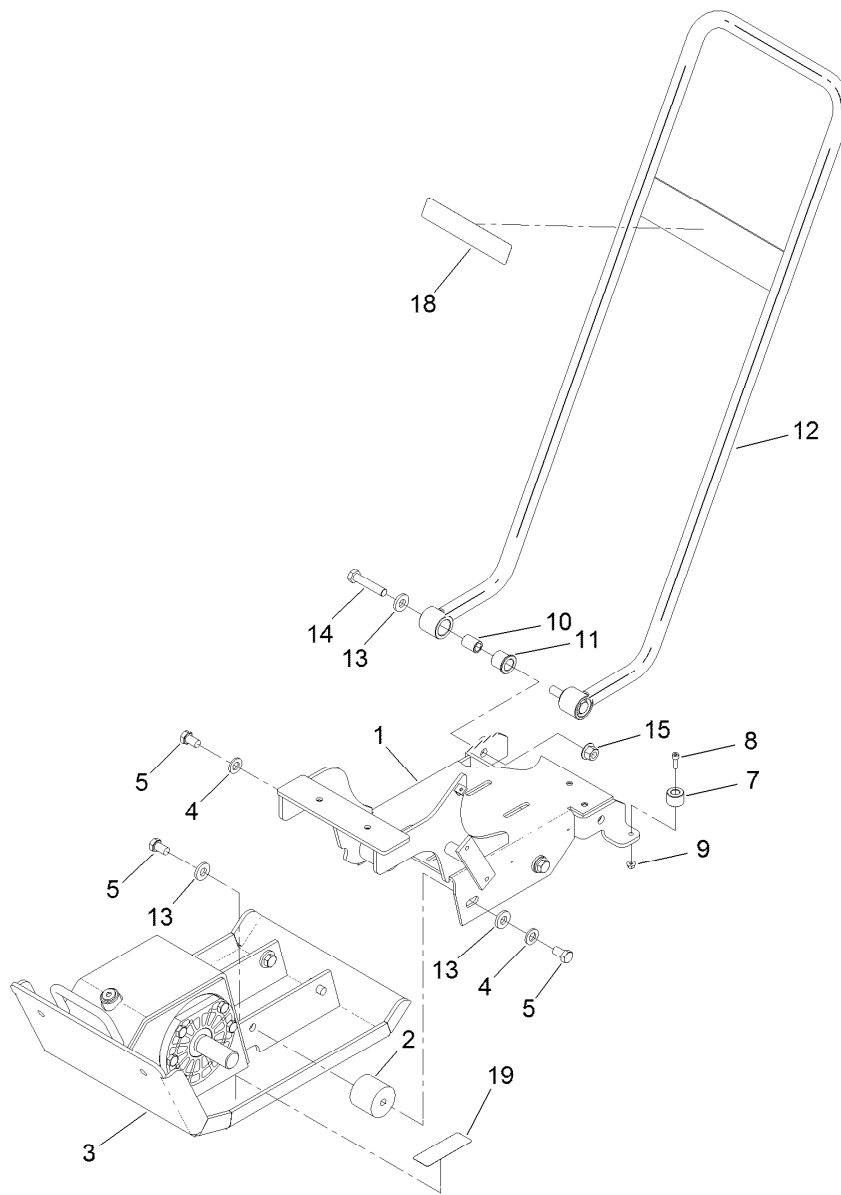
## Reference Numbers Indicating Quantity

In an illustration, if a reference number indicates more than one part, the reference number has the form nX y. The n represents the quantity of the part, the X is the multiplication symbol, and the y represents the reference number.

For example, in an illustration, the reference number 2X 37 means that two of the parts identified by reference number 37 are indicated.

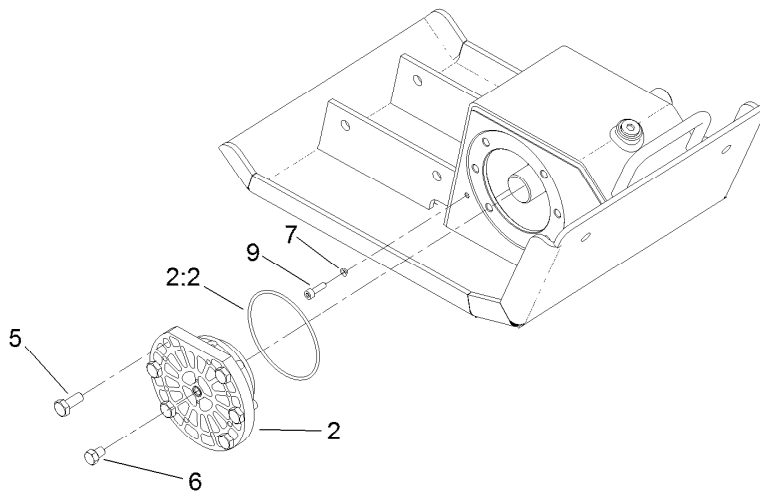
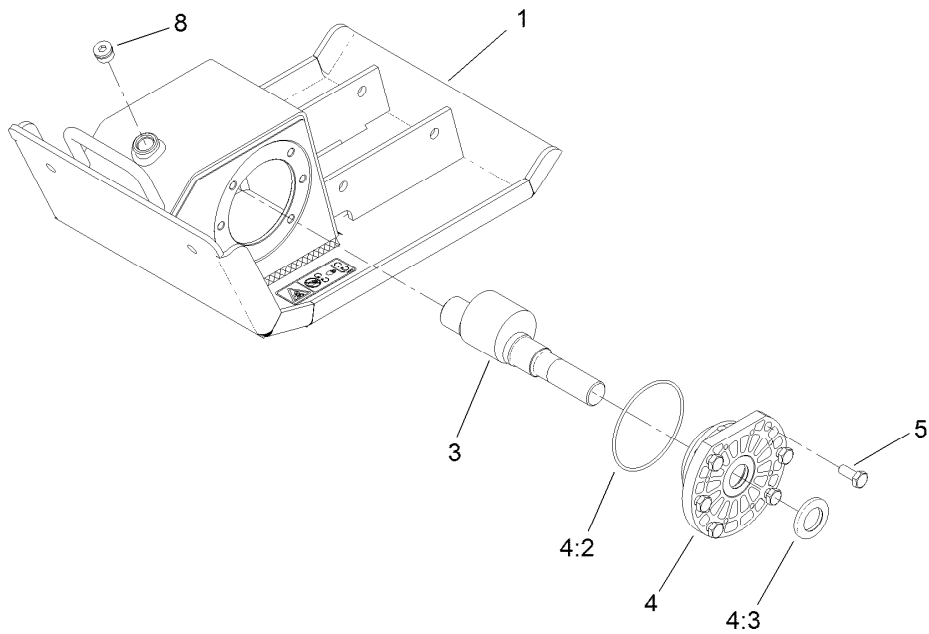
# Contents

Handle and Base Assembly ..... 4  
Base Assembly No. 125-6229 ..... 5  
Engine Assembly ..... 6  
Roll Cage and Water Tank Assembly ..... 7



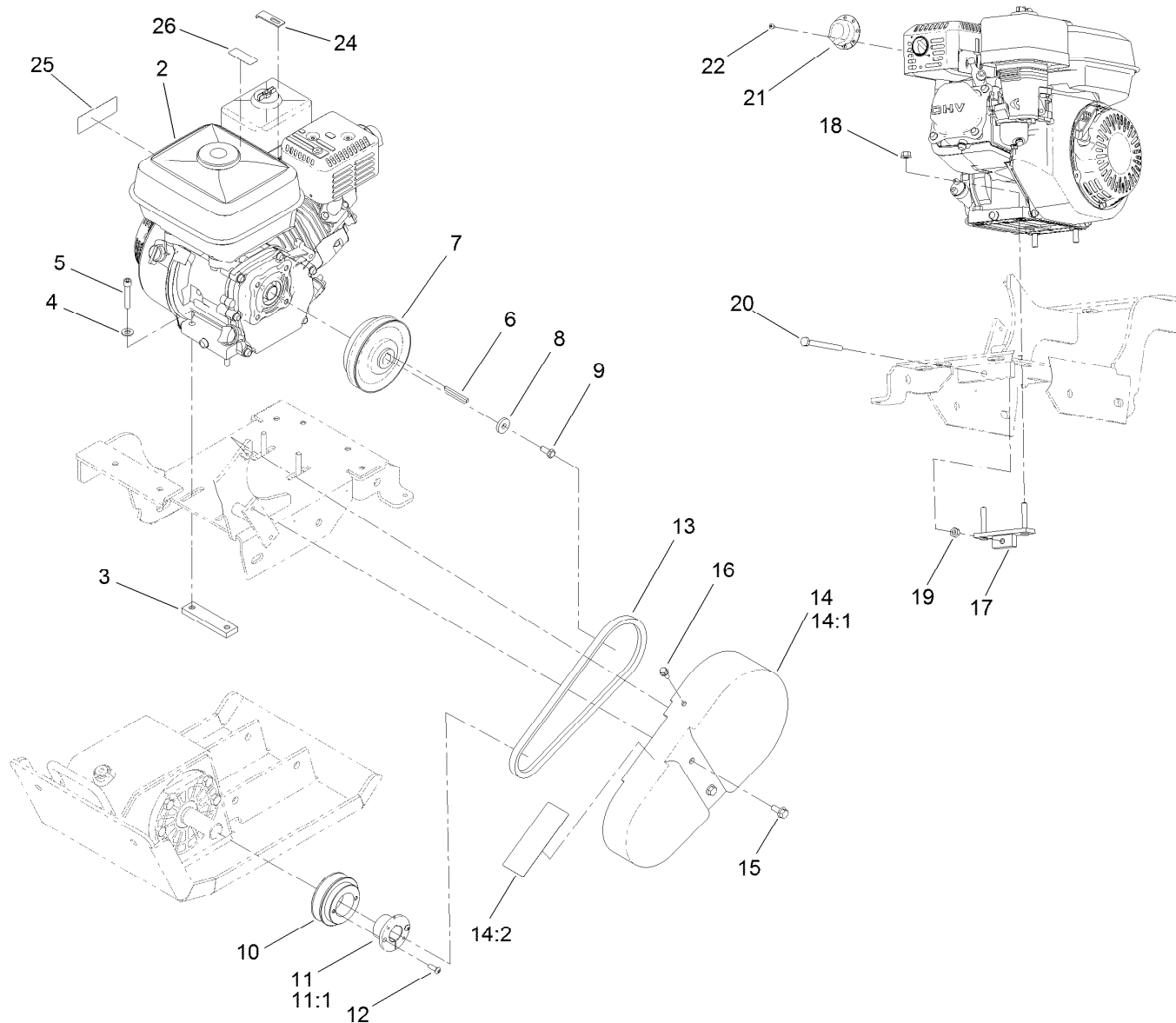
## Handle and Base Assembly

<i>Ref.</i>	<i>Part Number</i>	<i>Qty.</i>	<i>Description</i>	<i>Ref.</i>	<i>Part Number</i>	<i>Qty.</i>	<i>Description</i>
1	125-6231-03	1	Deck-Engine	10	ST50510	2	Spacer-Handle, Pivot
2	132-4034	4	Mount-Shock	11	ST50509	2	Bushing-Handle, Main Plate
3	125-6229	1	Base ASM	12	ST50478-03	1	Handle-Main
4	33096-00	4	Washer-Flat	13	ST80891	8	Washer-Flat
5	33116-020	8	Screw-HH	14	33116-060	2	Screw-HH
7	ST50265	2	Spacer-Stop, Handle	15	115-1115	2	Nut-Lock, HHF
8	ST81213	2	Screw-HSH	18	125-4928	1	Decal
9	33003-00	2	Nut-HF	19	117-4979	1	Decal-Warning, Shields



## Base Assembly No. 125-6229

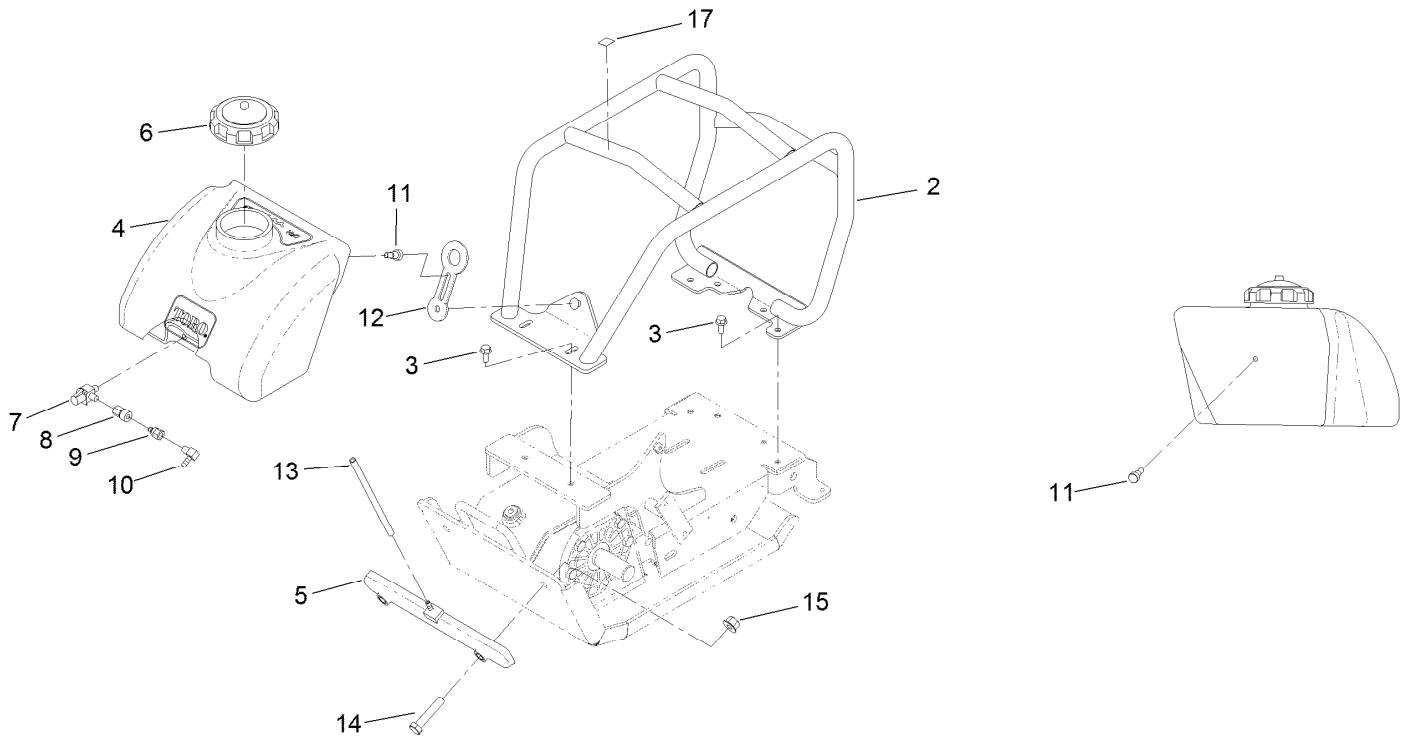
Ref.	Part Number	Qty.	Description
1	127-2818	1	Base ASM
2	ST22061	1	Plate Cap Bearing ASM
2:2	ST32033	1	O-Ring
3	ST43950	1	Shaft-Eccentric
4	ST22060	1	Plate Cap Bearing ASM
4:2	ST32033	1	O-Ring
4:3	ST32047	2	Seal-Shaft
5	43-0090	12	Screw-HH
6	ST80185	1	Screw-HH
7	ST81210	1	Washer-Sealing, Nyltite
8	ST47647	1	Fitting-HYD
9	ST81213	1	Screw-HSH



## Engine Assembly

<i>Ref.</i>	<i>Part Number</i>	<i>Qty.</i>	<i>Description</i>
2	125-4821	1	Engine-Honda, Gx120
3	ST50506	1	Plate-Nut, Engine
4	33094-00	2	Washer-Plain
5	127-0517	2	Screw-HSH
6	105-9716	1	Key-Square
7	ST32347	1	Clutch, S-Plate
8	ST39233	1	Washer
9	3235-6	1	Screw-HH
10	ST32797	1	Sheave
11	138-3106	1	Bushing-Locking
11:1	3245-42	1	Screw-Set
12	3274-69	2	Screw-HSBH
13	ST39307	1	Belt-V
14	127-2817	1	Guard-Belt

<i>Ref.</i>	<i>Part Number</i>	<i>Qty.</i>	<i>Description</i>
14:1	125-4802	1	Guard-Belt
14:2	125-4943	1	Decal-Warning, Plate
15	33104-020	2	Screw-HHF
16	33103-016	1	Screw-HHF
17	ST50257	1	Bracket-Adjuster, Engine
18	33004-00	2	Nut-HF
19	33014-00	1	Nut-Hex
20	ST81191	1	Screw
21	125-3866	1	Deflector
22	125-0519	2	Screw-Self Tapping
24	ST43978	1	Clip-Throttle
25	133-5619	1	Decal-Arrester, Spark
26	130-8322	1	Decal-Warning, Ethanol



## Roll Cage and Water Tank Assembly

Ref.	Part Number	Qty.	Description
2	ST50215-03	1	Cage-Roll
3	33104-020	6	Screw-HHF
4	125-4811	1	Tank-Water
5	125-8174	1	Sprinkler
6	ST47241	1	Cap-Plastic
7	ST50497	1	Valve-Ball
8	ST50498	1	Fitting-Quick, Female
9	ST50499	1	Fitting-Quick, Female, Nipple
10	ST34486	1	Fitting-HYD, 90 DEG
11	ST81130	1	Screw-HSBH
12	ST47182	1	Latch-Rubber
13	125-8733	1	Hose-Water
14	33116-060	2	Screw-HH
15	115-1115	2	Nut-Lock, HHF
17	93-9084	1	Decal-Point, Lift



**Count on it.**