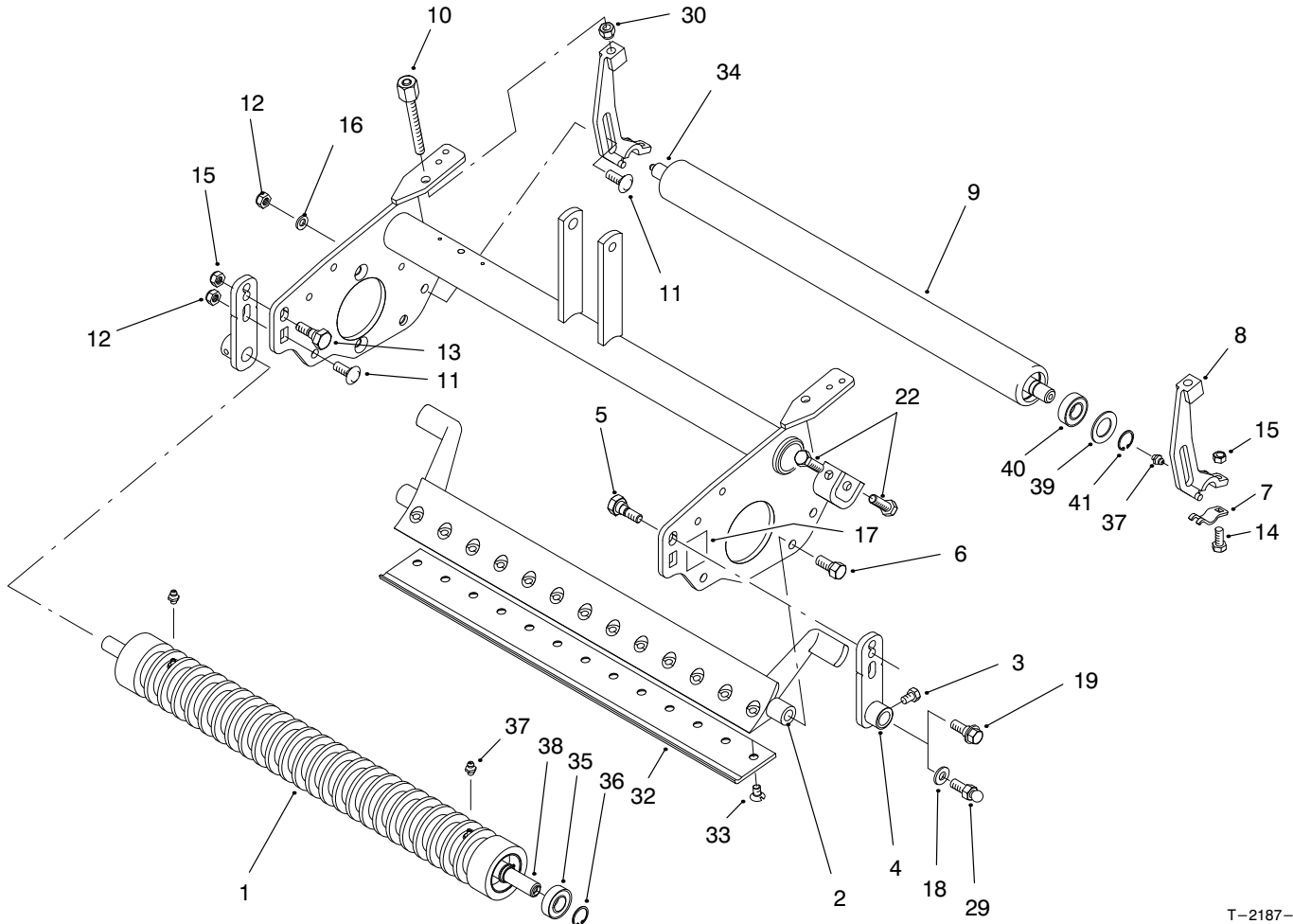




MODEL NO. 04480-90001 & UP
MODEL NO. 04481-90001 & UP

PARTS
CATALOG

**8 & 11 BLADE 4 BOLT CUTTING UNIT
GREENMASTER® 3200 SERIES**



T-2187-1

ROLLERS & BEDBAR ASM

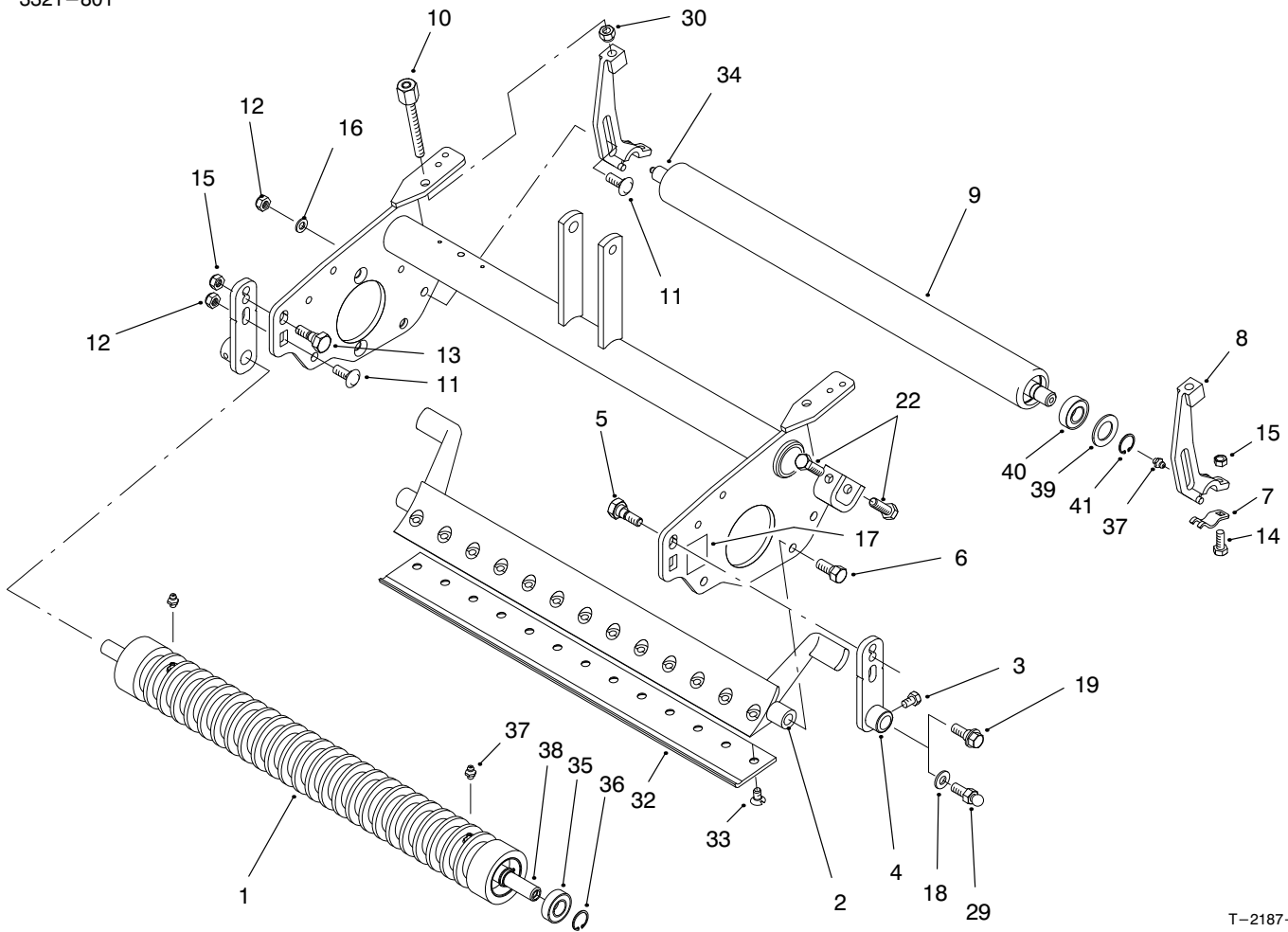
Ref. No.	Part No.	Description	No. Used
1	94-6389	Roller-Wiehle	1
2	93-2576	Bedbar	1
3	33113-012	Screw-HH	2
4	94-8170	Bracket-Front	2
5	95-1618	Bolt-Shoulder	1
6	217-74	Bolt-Wheel	2
7	95-1637	Collar-Height-of-Cut	2
8	95-1638	Bracket-Height-of-Cut	2
		Adjustment	2
9	95-2913	Tube-Roller	1
10	95-1633	Asm-Height-of-Cut Adj.	2
11	33125-025	Screw-CARR	4
12	33025-00	Nut-Lock	4
13	95-1617	Bolt-Eccentric	1
14	33114-020	Screw-CARR	2
15	33024-00	Nut-Lock	4

Ref. No.	Part No.	Description	No. Used
16	3256-46	Washer-Flat	2
17	94-8169	Decal-Bracket Position	2
18	3254-6	Washer-Lock, Int. Tooth	2
19	93-2364	Bolt-Shoulder	2
29	94-2958	Stud-Ball	2
		(Used on old suspensions)	2
30	3296-5	Nut-Lock	2
32	93-4263	Knife-Bed Tournament	1
*	93-4262	Knife-Bed Microcut	1
*	93-4264	Knife-Bed Low 1/8"	1
*	94-6392	Knife-Bed High 3/16"	1
*	63-8600	Knife-Bed Fairway	1
33	57-4910	Screw-Special	13
34	95-2912	Shaft	1
35	93-2559	Bearing	2
36	93-2525	Ring-Retaining	2

*Not Illustrated
Note: Quantity is for 1 Cutting Unit.

© The TORO Company - 1998
All Rights Reserved

TPS



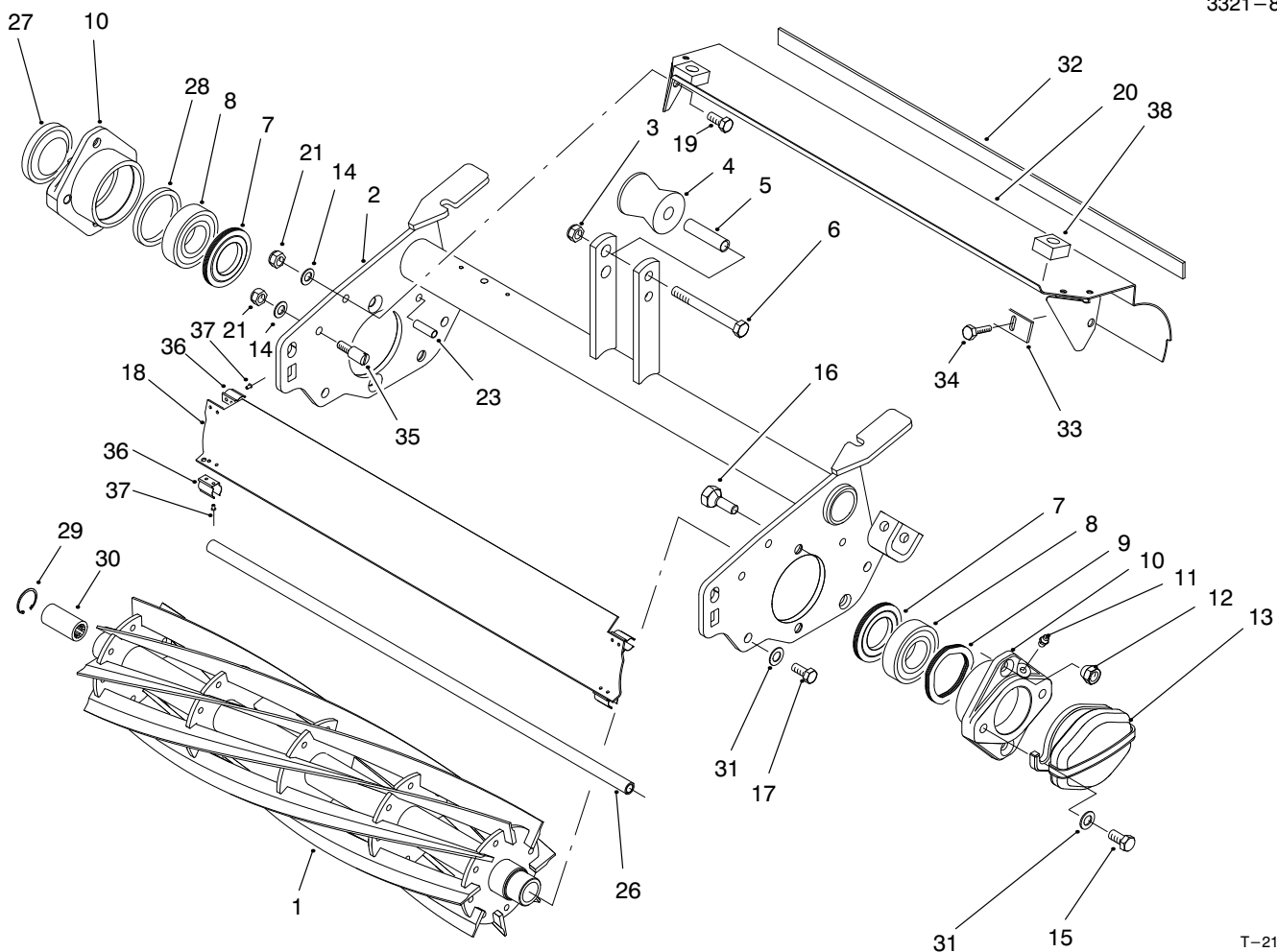
T-2187-1

ROLLERS & BEDBAR ASM (Continued)

Ref. No.	Part No.	Description	No. Used
37	302-5	Fitting-Grease	4
38	93-2470	Shaft-Roller, Wiehle	1
39	85-7190	Washer-Shield	2
40	85-9970	Bearing	2
41	32121-12	Ring-Retaining	2

Ref. No.	Part No.	Description	No. Used
*	95-2910	Asm-Rear Roller (Incl. Ref. #9, 34, 37 & 39-41)	1
*	94-8171	Asm-Wiehle Roller (Incl. Ref. #1 & 35-38)	1

*Not Illustrated
Note: Quantity is for 1 Cutting Unit.



T-2186-1

REEL & SHIELDS ASM

Ref. No.	Part No.	Description	No. Used	Ref. No.	Part No.	Description	No. Used
1	94-4356	Asm-Reel 8 Blade	1	19	33114-020	Screw-HHF	2
*	94-4357	Asm-Reel 11 Blade	1	20	98-0624	Asm-Rear Shield (Incl. Ref. #38)	1
*	98-2181	Asm-Reel 5 Blade HD	1	21	33024-00	Nut-Lock	4
*	98-2182	Asm-Reel 8 Blade HD	1	22	33114-030	Screw-HH	4
2	95-1635	Frame	1	23	32121-123	Pin-Spring	2
3	33025-00	Nut-Lock	1	26	98-2196	Rod-Shield	1
4	93-2463	Roller-Lift	1	27	2410-30	Cap-Plastic	1
5	93-2464	Spacer-Roller	1	28	94-4544	Spacer-Bearing	1
6	33115-080	Screw-HH	1	29	32120-37	Ring-Retaining	1
7	94-8908	Seal-Grease	2	30	94-4507	Coupler-Drive	2
8	93-2489	Bearing	2	31	3256-24	Washer	4
9	94-4543	Spring-Flat Wire	1	32	95-1636	Strip-Seal	1
10	94-4545	Housing-Bearing	2	33	36-7260	Bar-Cutoff	1
11	302-5	Fitting-Grease	2	34	32144-73	Screw-HFH	5
12	93-2454	Nut-Taper	4	35	98-2167	Bolt-Shoulder	2
13	95-1642	Weight-Counter	1	36	94-1380	Clip-Spring Large	4
14	3256-74	Washer-Flat	4	37	3269-33	Rivet-Pop	8
15	93-2569	Screw-HHF	4	38	94-1392	Pad-Rubber	2
16	95-0745	Screw-TPRD	4				
17	33115-020	Screw-HHF	2				
18	98-0645	Asm-Front Shield (Incl. Ref. #36-37)	1				

*Not Illustrated

Note: Quantity is for 1 Cutting Unit.

