



Count on it.

Parts Catalog

18in Turf Seeder

Model No. 23511—Serial No. 40000000 and Up



Ordering Replacement Parts

To order replacement parts, please supply the part number, the quantity, and the description of each part desired.

Understanding Reference Numbers

Each identified part in an illustration has a reference number. The reference number for a part also appears in the parts list, along with other information about the part.

This catalog uses two special reference number formats, one to indicate parts in a service assembly and another to indicate the quantity of a given part in an illustration.

Service Assembly Reference Numbers

Parts in service assemblies have reference numbers in the form a:b. The a represents the reference number of the entire service assembly and the b represents a sequential number unique to each part within the service assembly.

For example, a wheel assembly might be identified by reference number 6, the tire by 6:1, the valve by 6:2, and the wheel by 6:3. When you order the assembly identified by reference number 6, you receive all parts identified by reference numbers 6:1, 6:2, and 6:3. However, you may also order any part individually. Reference numbers of this type appear in illustration and in parts lists.

Reference Numbers Indicating Quantity

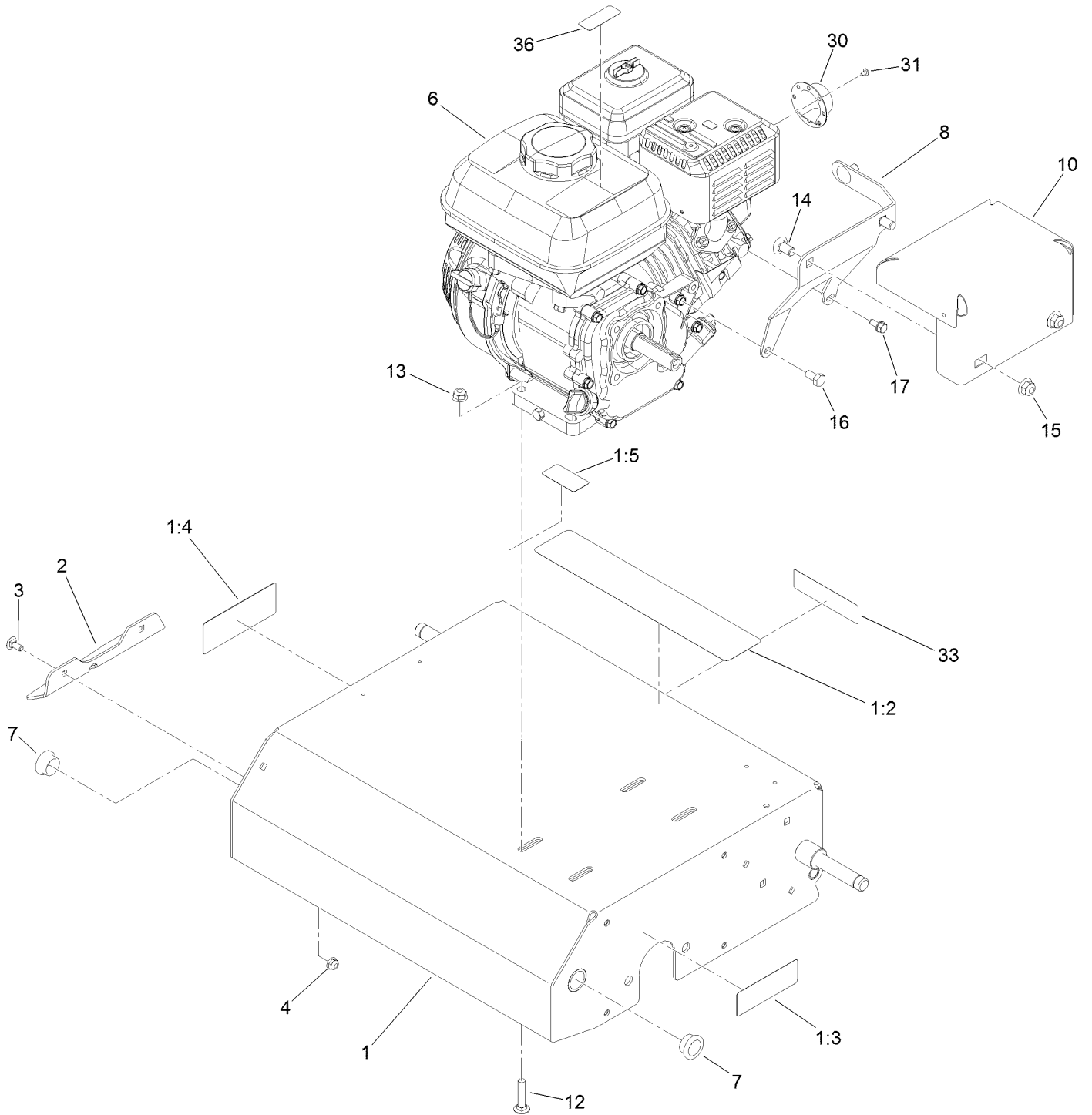
In an illustration, if a reference number indicates more than one part, the reference number has the form nX y. The n represents the quantity of the part, the X is the multiplication symbol, and the y represents the reference number.

For example, in an illustration, the reference number 2X 37 means that two of the parts identified by reference number 37 are indicated.

Contents

- Engine and Frame Assembly 4
- Handle Assembly 6
- Bearing Assembly 8
- Wheel and Height Adjust Assembly 10
- Belt Guard Assembly 12

Engine and Frame Assembly



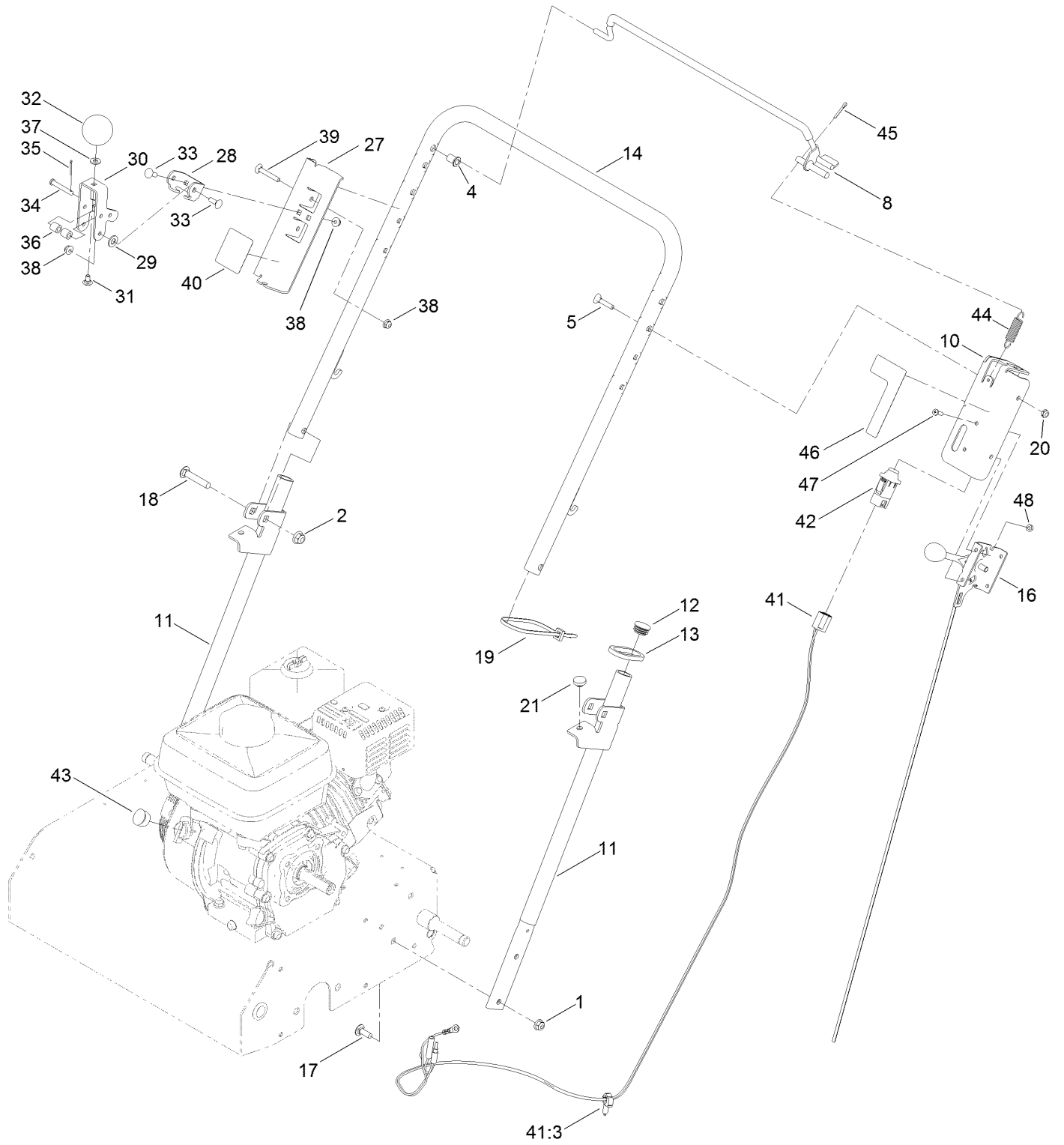
Engine and Frame Assembly (continued)

<i>Ref.</i>	<i>Part Number</i>	<i>Qty.</i>	<i>Description</i>	<i>Ref.</i>	<i>Part Number</i>	<i>Qty.</i>	<i>Description</i>
1	125-3825	1	Frame ASM	10	132-7166-03	1	Shield-Heat
1:2	125-3809	1	Decal-Warning	12	3230-4	4	Bolt-CARR
1:3	117-4979	1	Decal-Warning, Shields	13	104-8300	4	Nut-HF, NI
1:4	93-7321	1	Decal-Danger	14	3231-21	3	Screw-CARR
1:5	98-4387	1	Decal-Protection, Ear	15	104-8301	3	Nut-HF, NI
2	121-1853-01	1	Guard-Hand	16	3210-2	1	Screw-HH
3	3229-11	2	Screw-CARR	17	125-8383	1	Screw-HWH
4	104-7201	2	Nut-HF	30	125-3866	1	Deflector
6		1	Engine-Honda, Gx160 ●■	31	120-1884	2	Screw-PPHTF
7	121-1876	2	Bushing	33	133-8056	1	Decal-Arrester, Spark
8	132-7167-03	1	Mount-Shield, Heat	36	130-8322	1	Decal-Warning, Ethanol

● Not serviced separately

■ Obtain parts from www.honda-engines.com

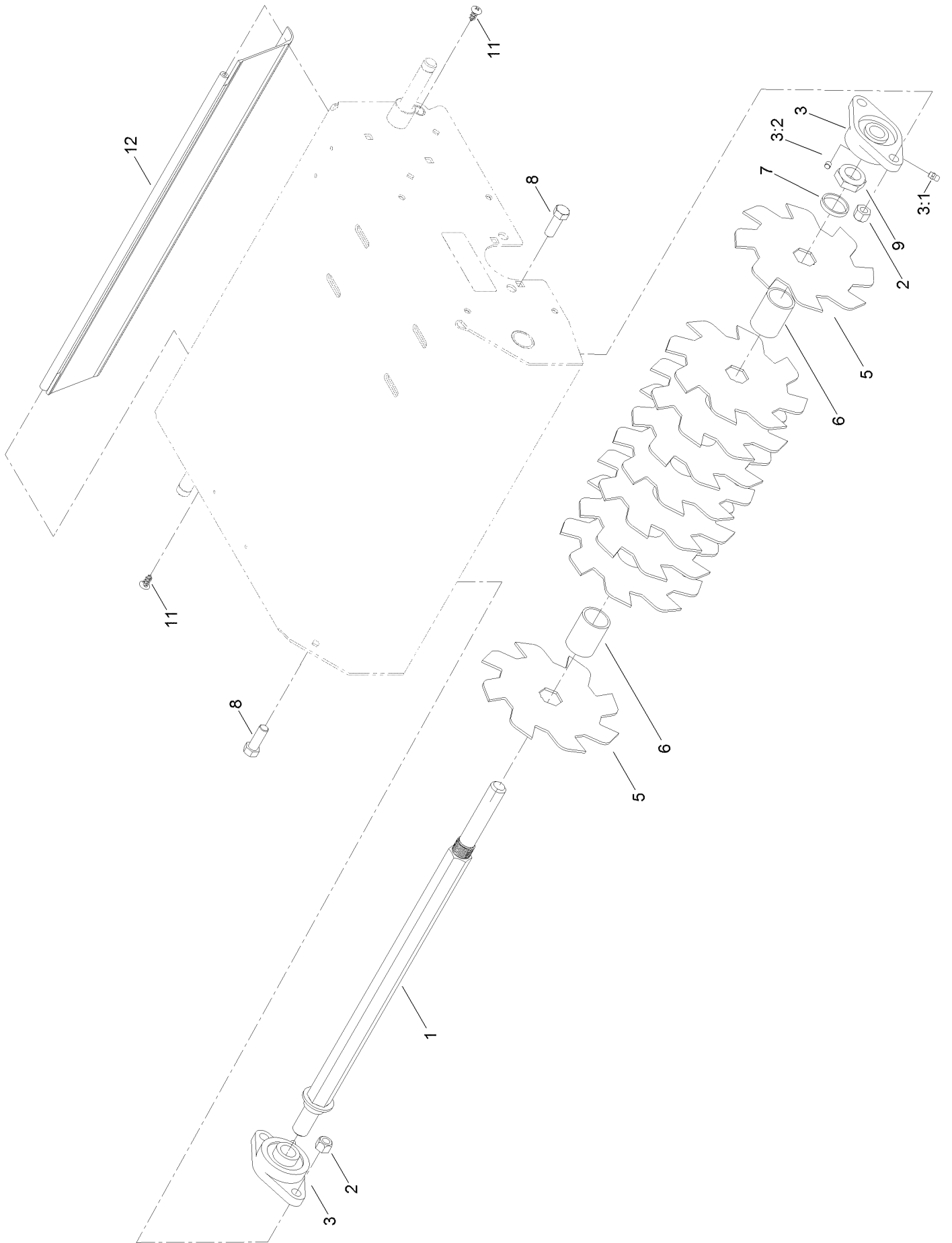
Handle Assembly



Handle Assembly (continued)

<i>Ref.</i>	<i>Part Number</i>	<i>Qty.</i>	<i>Description</i>	<i>Ref.</i>	<i>Part Number</i>	<i>Qty.</i>	<i>Description</i>
1	104-8300	4	Nut-HF, NI	31	3229-10	1	Screw-CARR
2	104-8301	2	Nut-HF, NI	32	121-1877	1	Knob-Rate, Flow
4	109-2713	2	Bushing	33	3229-1	4	Bolt-CARR
5	109-8144	2	Bolt-Handle	34	119-7499	1	Pin-Clevis
8	127-4026	1	Bail	35	3272-4	2	Pin-Cotter
10	127-4027-03	1	Bracket-Throttle	36	22-7810	2	Spacer
11	125-3621-03	2	Handle	37	3256-22	1	Washer-Flat
12	121-4870	2	Plug	38	104-7201	6	Nut-HF
13	121-6202	2	Ring-Handle Lock	39	3229-5	2	Screw-CARR
14	125-3800-03	1	Handle-Upper	40	125-3917	1	Decal-Seed Gate
16	127-4048	1	Cable-Throttle	41	127-4042	1	Harness-Wire
17	3230-10	4	Bolt-CARR	41:3	32180-037	1	Clip-Harness
18	3231-6	2	Screw-CARR	42	100-1268	1	Switch-Plunger
19	3290-378	2	Tie-Cable	43	120-1887	1	Plug-Engine
20	3296-56	2	Nut-Lock, NI	44	121-4409	1	Spring-Extension
21	1-513658	2	Bumper	45	3272-10	1	Pin-Cotter
27	125-3620-03	1	Bracket-Adjust, Flow	46	127-4061	1	Decal-Throttle
28	121-1879	1	Bracket-Adjust, Flow	47	3290-500	2	Screw-PPH
29	3256-45	2	Washer-Flat	48	3296-2	2	Nut-Lock, NI
30	121-1878	1	Lever-Adjust, Flow				

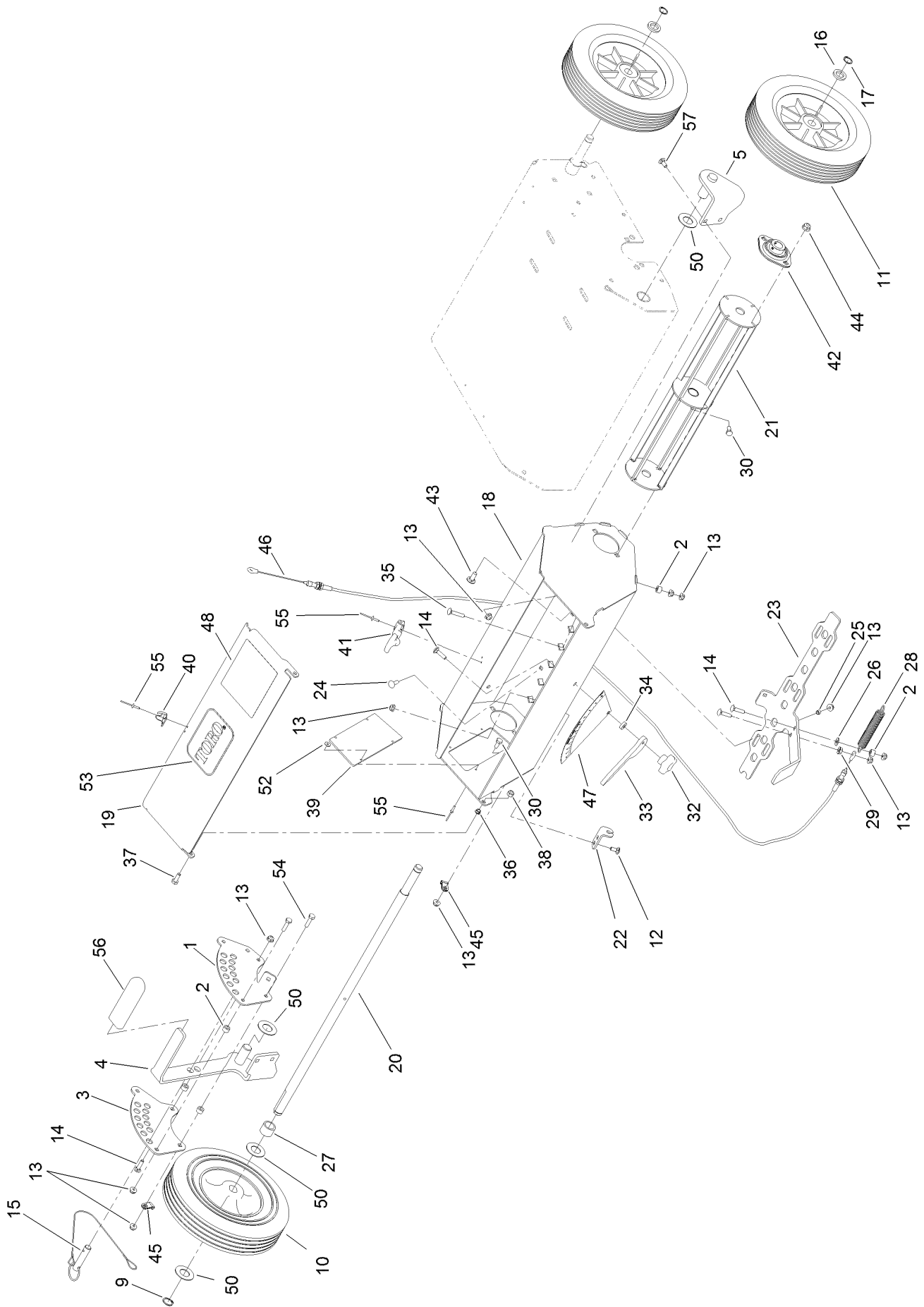
Bearing Assembly



Bearing Assembly (continued)

<i>Ref.</i>	<i>Part Number</i>	<i>Qty.</i>	<i>Description</i>	<i>Ref.</i>	<i>Part Number</i>	<i>Qty.</i>	<i>Description</i>
1	121-6124	1	Shaft	6	121-1933	8	Spacer
2	3296-48	4	Nut-Lock, NI	7	121-1934	1	Spacer-Retaining
3	106-7126	2	Bearing-Flange	8	324-5	4	Screw-HH
3:1	302-58	1	Fitting-Straight	9	3296-60	1	Nut-Lock, NI
3:2	3245-35	2	Screw-Set, HSH	11	117-1092	2	Screw-PTH
5	121-1931	9	Blade-Cutting, Seeder	12	120-6241	1	Shield-Trailing

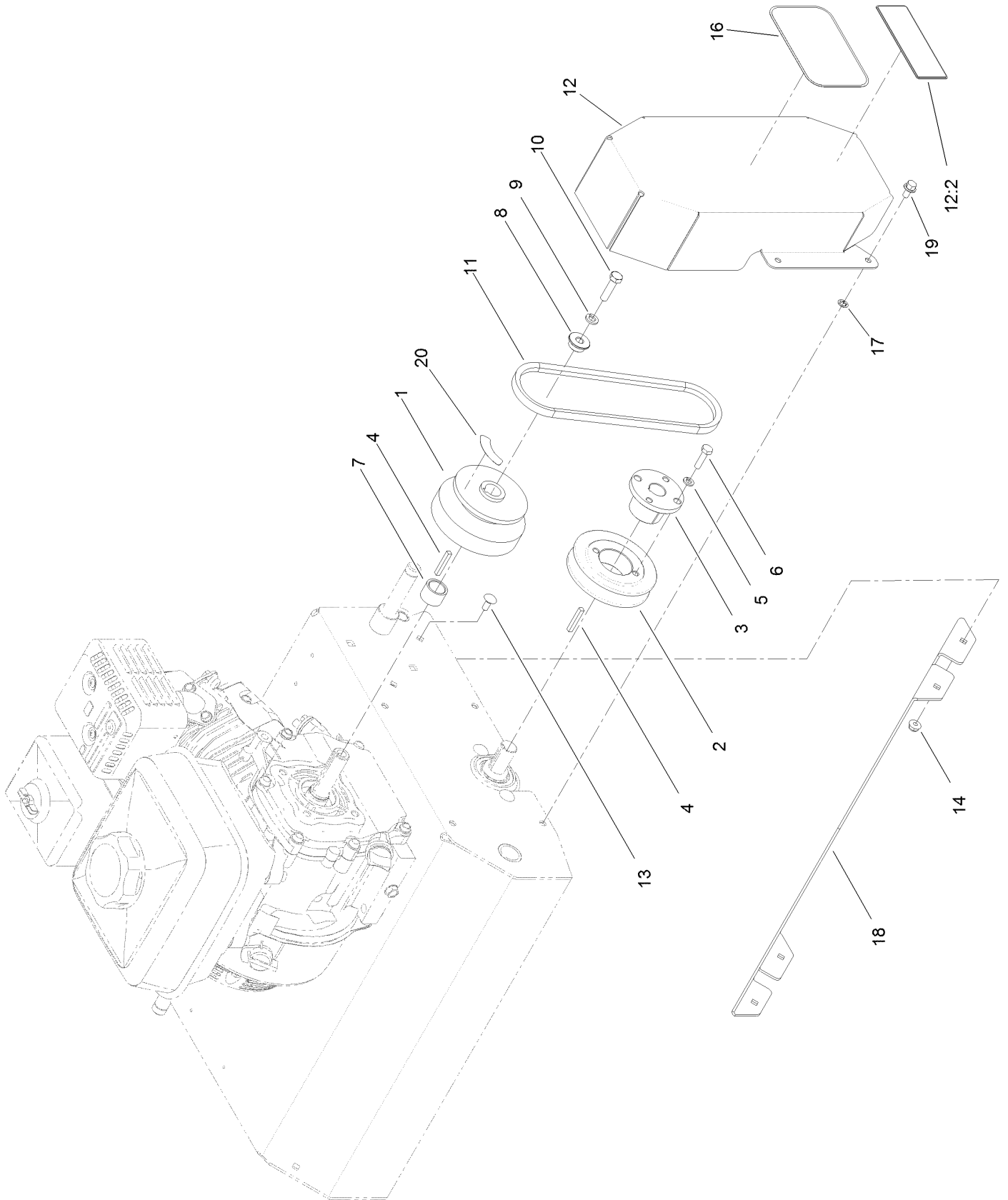
Wheel and Height Adjust Assembly



Wheel and Height Adjust Assembly (continued)

<i>Ref.</i>	<i>Part Number</i>	<i>Qty.</i>	<i>Description</i>	<i>Ref.</i>	<i>Part Number</i>	<i>Qty.</i>	<i>Description</i>
1	121-1854	1	Bracket	30	321-3	2	Screw-HH
2	98-4799	8	Spacer	32	108-6402	1	Knob-Handle
3	121-1856	1	Plate	33	121-1912	1	Gauge-Flow, Seed
4	125-3599-03	1	Bracket-Adjust, Height	34	104-7658	1	Spacer
5	125-3600-03	1	Bracket-Wheel	35	3229-3	2	Screw-CARR
9	32120-72	1	Ring-Snap	36	119-2404	2	Bushing-Flange, Split
10	120-3705	1	Wheel-Drive	37	321-4	2	Screw-HH
11	120-3560	3	Wheel-10 Inch	38	3296-42	2	Nut-Lock, NI
12	3229-11	4	Screw-CARR	39	125-3618	1	Window-Box, Seeder
13	104-7201	25	Nut-HF	40	249-40	1	Keeper
14	3229-2	5	Screw-CARR	41	1-643188	1	Latch-Rubber
15	104-3678	1	Pin-Hitch	42	121-1961	2	Bearing
16	63-9710	3	Spacer-Bearing	43	3230-23	4	Screw-CARR
17	32120-64	3	Ring-Snap, External	44	104-8300	4	Nut-HF, NI
18	125-3590-01	1	Box-Seeder	45	2412-149	2	Clamp-R
19	125-3610-01	1	Cover-Seedbox	46	121-6218	1	Cable-Gate, Seed
20	125-3598	1	Shaft-Agitator	47	119-4655	1	Decal-Rate, Flow
21	121-6138-03	1	Mixer	48	116-8537	1	Decal-Graph, Seed
22	121-1907	1	Bracket-Flow, Seed	50	3256-39	4	Washer-Flat
23	125-3601-03	1	Gate-Seed	52	3269-10	4	Washer-Back
24	1-807512	6	Bolt-CARR	53	67-1300	1	Decal
25	121-2015	6	Spacer	54	321-6	2	Screw-HH
26	3256-22	2	Washer-Flat	55	3290-274	8	Rivet-Pop
27	83-0730	1	Spacer-Lockup	56	1-633268	1	Grip-Lever
28	121-2016	2	Spring-Extension	57	3229-1	4	Bolt-CARR
29	32128-33	1	Nut-HF				

Belt Guard Assembly



Belt Guard Assembly (continued)

<i>Ref.</i>	<i>Part Number</i>	<i>Qty.</i>	<i>Description</i>	<i>Ref.</i>	<i>Part Number</i>	<i>Qty.</i>	<i>Description</i>
1	120-1215	1	Clutch-Centrifugal	11	53-4650	1	V-Belt
2	121-2019	1	Sheave-Taper Lock	12	125-3827	1	Belt Guard ASM
3	121-2022	1	Bushing-Taper Lock	12:2	93-7321	1	Decal-Danger
4	92-2649	2	Key-Sq	13	3229-11	4	Screw-CARR
5	3253-3	2	Washer-Lock	14	104-7201	4	Nut-HF
6	321-6	2	Screw-HH	16	67-1300	1	Decal
7	121-7731	1	Spacer	17	1-803037	4	Nut-Retaining
8	121-7732	1	Bushing	18	121-6235-01	1	Baffle-Deflector
9	3253-4	1	Washer-Lock	19	3234-13	4	Screw-HHF
10	3210-6	1	Screw-HH	20	125-3897	1	Decal-Warning

Notes:

Notes:



Count on it.