



**Proline 120**

**44" Side Discharge  
Cutting Unit**

**Model No. 30546 – 990001 & Up**

---

**Parts Catalog**

## ORDERING REPLACEMENT PARTS

To order replacement parts, please supply: the part number, the quantity, and the description of each part desired.

## Contents

Description	Page	Description	Page
Deck And Spindle Assembly .....	1	Decal Location Assembly .....	4
Gearbox And Cover Assembly .....	2	Gearbox Assembly No. 54-2320 .....	5
Carrier Frame Assembly .....	3		

## Accessories

Description	Model / Parts No.	Description	Model / Parts No.
High Sail Blades .....	55-4940	44" Recycler Kit .....	59220
Blowout Baffle Kit .....	60-9030	Leaf Mulcher Kit .....	30752

## Part Description Abbreviations

Part descriptions in this catalog may include the following abbreviations.

Abbreviation	Meaning	Abbreviation	Meaning
AR .....	as required	HWHTF .....	hex washer head thread forming
ASM .....	assembly	INC .....	incorporated
CARR .....	carriage	LH .....	left hand
DEG .....	degrees	PH .....	pan head
FH .....	flat head	PPH .....	Phillips pan head
GA .....	gauge	PTO .....	power take off
HF .....	hex flange	RH .....	right hand
HFV .....	hex flange washer	SFH .....	slotted fillister head
HH .....	hex head	SH .....	square head
HHF .....	hex head flange	SHWH .....	slotted hex washer head
HHST .....	hex head self tapping	SPH .....	slotted pan head
HJ .....	hex jam	STD .....	standard
HOC .....	height-of-cut	TAP .....	self tapping
HS .....	hex socket	TH .....	truss head
HSBH .....	hex socket button head	TTH .....	Torx truss head
HSFH .....	hex socket flat head	WH .....	wing head
HSH .....	hex socket head		
HWH .....	hex washer head		

## Important Format Explanations

This catalog uses special formats to convey information in illustrations and parts lists. Specifically, one format is used in conjunction with service assemblies and another with quantities associated with reference numbers.

### Service Assemblies

Parts within service assemblies have reference numbers in the form X:Y. X is the reference number of the service assembly and Y is a sequential number unique to each part within the service assembly.

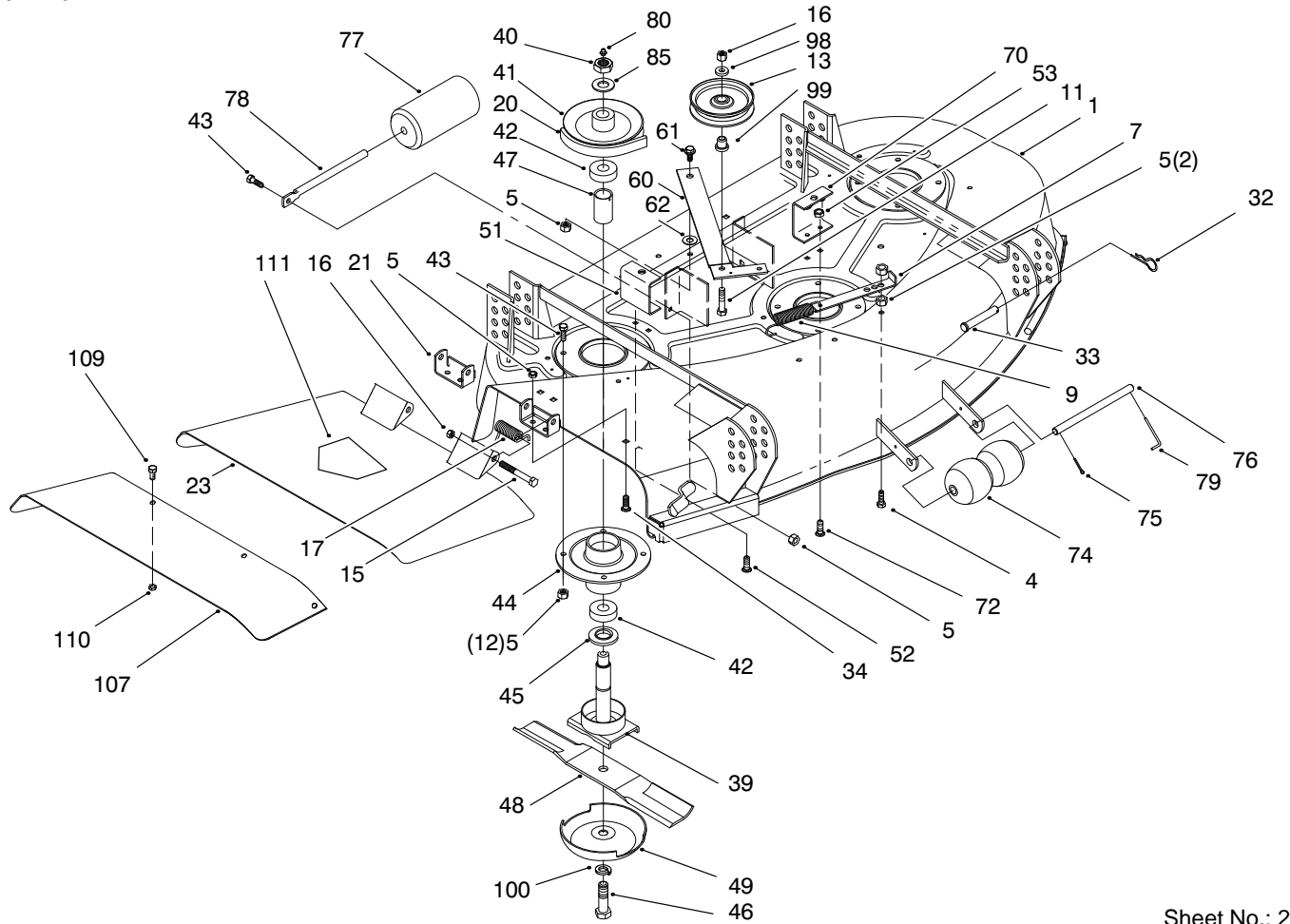
For example, a wheel assembly might be identified by reference number 6, the tire by 6:1, the valve by 6:2, and the wheel by 6:3. When you order the assembly identified by reference number 6, you receive all parts identified by reference numbers 6:1, 6:2, and 6:3. However, you may also order any part individually.

Reference numbers of this type appear in part lists and as callouts in illustrations.

## **Reference Numbers with Quantities**

Illustrations may have a quantity in parentheses next to a reference number, in the form  $X (Y)$ .  $X$  is the reference number.  $Y$  in parentheses is the quantity of the part identified by the reference number.

For example, the illustration callout 4 (2) indicates that two parts are used in that instance.



Sheet No.: 2

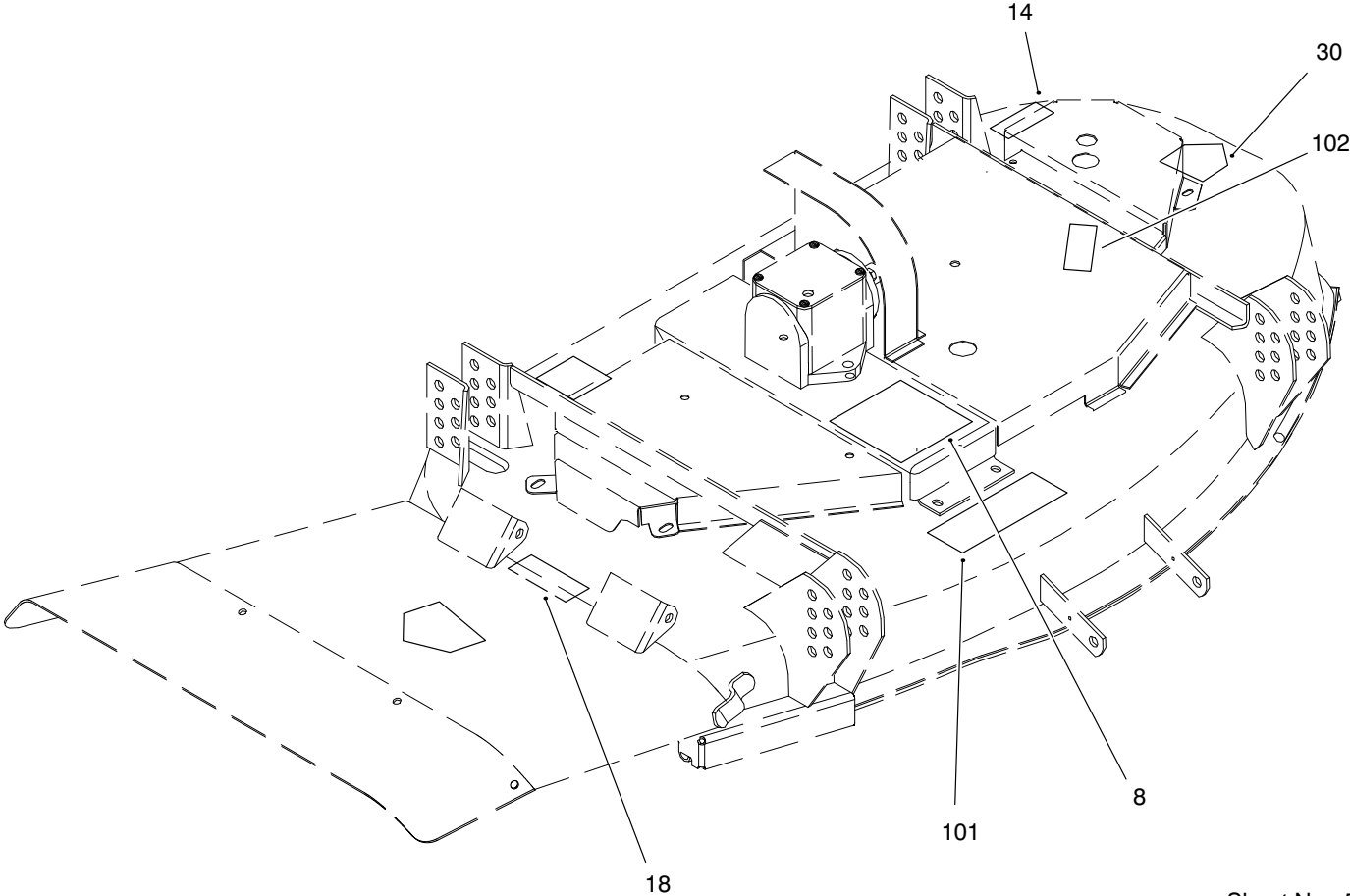
## Deck And Spindle Assembly

Ref. No.	Part No.	Qty.	Description
1	94-6024	1	Deck ASM w/Decals
4	322-5	1	Screw-HH
5	32152-1	20	Nut-Lock
7	54-1180	1	Anchor-Deck Spring
9	54-1160	1	Spring-Extension
11	3211-8	1	Screw HH
13	65-5940	1	Pulley-Idler
15	3211-15	2	Screw
16	3296-5	3	Nut-Lock
17	40-6230	2	Spring-Torsion
20	54-1370	1	V-Belt
21	29-5590-03	2	Bracket-Pivot
23	99-3902	1	Grass Deflector (Incl. Ref. #111)
32	3290-355	4	Pin-Hair
33	283-55	4	Pin-Clevis
34	3230-20	4	Bolt-CARR
39	71-2780	3	Shaft
40	32146-20	3	Nut-Lock
41	67-7690	3	Pulley
42	251-257	6	Bearing
43	322-4	13	Screw-HH
44	67-7590	3	Housing-Spindle
45	67-7570	3	Spacer-Spindle
46	51-4060	3	Bolt-Blade
47	67-7580	3	Spacer-Bearing

Ref. No.	Part No.	Qty.	Description
48	54-0010	3	Blade-15.5
49	67-7560	3	Cup-Anti-Scalp
51	55-7050	1	Cover-Bracket RH
52	3229-11	2	Bolt-CARR
53	3296-16	4	Nut-Lock
60	55-7430	1	Lever-Deck
61	19-1470	1	Bolt-Shoulder
62	23-1120	1	Washer-Flat
70	55-7060	1	Cover-Bracket LH
72	3229-3	2	Bolt-Carriage
74	29-4820	2	Roller
75	3272-11	1	Pin-Cotter
76	40-6400	1	Shaft-Roller
77	36-1740	1	Roller-Deck
78	62-4480	1	Rod-Roller
79	57-0690	1	Pin-Cotter
80	302-2	3	Fitting-Grease
85	7-4150	3	Washer
98	7-0081	1	Washer-Special
99	65-5950	1	Bushing-Pulley
100	3253-8	3	Washer-Lock
107	93-9484	1	Guard-Deflector
109	322-3	4	Screw-HH
110	3296-47	4	Nut-Lock
111	93-7316	1	Decal-Danger







Sheet No.: 5

### Decal Location Assembly

Ref. No.	Part No.	Qty.	Description
8	54-2760	1	Decal-44"
14	93-7818	1	Decal-Blade Bolt
18	93-7828	1	Decal-Danger
30	93-7316	1	Decal-Danger
101	93-7824	1	Decal-Danger
102	93-7273	1	Decal-Danger

Ref. No.	Part No.	Qty.	Description



# Toro Part Number Index

Part No.	Page No.	Ref. No.	Qty.	Description
3-6781	3	25	8	Washer-Thrust
7-0081	1	98	1	Washer-Special
7-4150	1	85	3	Washer
19-1470	1	61	1	Bolt-Shoulder
23-1120	1	62	1	Washer-Flat
29-4820	1	74	2	Roller
29-5590-03	1	21	2	Bracket-Pivot
36-1740	1	77	1	Roller-Deck
40-6230	1	17	2	Spring-Torsion
40-6400	1	76	1	Shaft-Roller
46-8560	2	19	5	Screw-HFH
51-4060	1	46	3	Bolt-Blade
54-0010	1	48	3	Blade-15.5
54-1160	1	9	1	Spring-Extension
54-1180	1	7	1	Anchor-Deck Spring
54-1360	2	93	1	V-Belt
54-1370	1	20	1	V-Belt
54-2220	2	68	1	Cover-Deck
54-2240	2	50	1	Cover-Deck
54-2250	2	22	1	Cover-Deck
54-2320	2	58	1	Gearbox-Deck Drive
54-2350	2	63	1	Pulley-Gearbox
54-2360	2	64	1	Pulley-Gearbox
54-2760	4	8	1	Decal-44"
55-7030	2	56	1	Bracket-Gearbox
55-7040	2	66	1	Cover-Deck
55-7050	1	51	1	Cover-Bracket RH
55-7060	1	70	1	Cover-Bracket LH
55-7430	1	60	1	Lever-Deck
57-0690	1	79	1	Pin-Cotter
57-6970-03	1	23	1	Grass Deflector
62-4480	1	78	1	Rod-Roller
62-5570	1	*27:3	1	Bearing-Roller
62-5580	1	*27:2	2	Bearing-Outside
62-6980	3	81	2	Shim-Carrier
65-5940	1	13	1	Pulley-Idler
65-5950	1	99	1	Bushing-Pulley
67-7560	1	49	3	Cup-Anti-Scalp
67-7570	1	45	3	Spacer-Spindle
67-7580	1	47	3	Spacer-Bearing
67-7590	1	44	3	Housing-Spindle
67-7690	1	41	3	Pulley
68-8980	3	105	2	Bushing-Spanner
71-2780	1	39	3	Shaft
74-0340	3	31	2	Cushion-Rubber
93-7273	4	102	1	Decal-Danger
93-7316	1	111	1	Decal-Danger
93-7316	4	30	1	Decal-Danger
93-7818	3	14	1	Decal-Blade Bolt
93-7819	3	67	2	Decal-HOC
93-7824	4	101	1	Decal-Danger
93-7828	4	18	1	Decal-Danger
93-9484	1	107	1	Guard-Deflector
93-9485	3	108	1	Baffle-Front
94-1293	2	112	4	Fastener
94-5830	3	2	1	44" Suspension ASM
94-5833	1	1	1	Deck ASM w/Decals
98-2858	3	26	2	Front Castor Fork
98-2859	3	27	2	Wheel & Tire ASM
98-2877	3	27:1	1	Tire
232-27	3	*27:4	2	Valve Stem
249-35	2	6	4	Ring-Retaining

\*Not Illustrated

# Toro Part Number Index (cont.)

Part No.	Page No.	Ref. No.	Qty.	Description
251-257	1	42	6	Bearing
283-55	1	33	4	Pin-Clevis
283-71	3	24	2	Pin-Lynch
302-2	1	80	3	Fitting-Grease
302-11	3	27:5	1	Fitting-Grease
302-14	2	57	1	Fitting-Pressure Relief
322-3	1	109	4	Screw-HH
322-3	2	109	5	Screw-HH
322-4	1	43	13	Screw-HH
322-4	2	43	4	Screw-HH
322-5	1	4	1	Screw-HH
323-6	2	59	2	Screw-HH
323-9	3	94	4	Screw-HH
325-19	3	28	2	Screw-HH
3211-8	1	11	1	Screw HH
3211-15	1	15	2	Screw
3217-6	1	36	4	Nut-Hex
3229-3	1	72	2	Bolt-Carriage
3229-11	1	52	2	Bolt-CARR
3230-20	1	34	4	Bolt-CARR
3234-25	3	114	4	Bolt-Flange
3245-9	2	73	4	Screw-RH
3253-4	1	35	4	Washer-Lock
3253-8	1	100	3	Washer-Lock
3256-6	3	97	4	Washer-Flat
3256-23	2	55	2	Washer-Flat
3256-24	3	90	4	Washer-Flat
3257-30	2	65	2	Key-Woodruff
3272-11	1	75	1	Pin-Cotter
3290-271	3	38	2	Rivet-Pop
3290-355	1	32	4	Pin-Hair
3296-5	1	16	3	Nut-Lock
3296-16	1	53	4	Nut-Lock
3296-47	1	110	4	Nut-Lock
3296-47	2	110	5	Nut-Lock
32146-20	1	40	3	Nut-Lock
32152-1	1	5	20	Nut-Lock
32152-1	2	5	4	Nut-Lock
32152-2	2	12	2	Nut-Lock
32152-2	3	12	4	Nut-Lock
32153-5	3	29	2	Nut-Lock



