



Z-Master™

250 Series

Z255

**with 52" Side
Discharge Mower**

Model No. 74204 – 990001 & Up

Parts Catalog

ORDERING REPLACEMENT PARTS

To order replacement parts, please supply: the part number, the quantity, and the description of each part desired.

Contents

| Description | Page | Description | Page |
|---|------|--|------|
| Front Frame Assembly | 1 | Shields And Clutch Assembly | 9 |
| Caster And Wheel Assembly | 2 | Idler Assembly | 10 |
| Rear Frame And Wheel Assembly | 3 | Electrical System Assembly | 11 |
| Brake And Wheel Hub Assembly | 4 | Frame And Deck Assembly | 12 |
| Control Panel Assembly | 5 | Cover And Rollers Assembly | 13 |
| Hydraulic System Assembly | 6 | Deflector, Spindle And Pulley Assembly | 14 |
| Hydraulic System Assembly (Continued) | 7 | Baffle And Belt Assembly | 15 |
| Tank And Fuel Lines Assembly | 8 | Note: | |

Part Description Abbreviations

Part descriptions in this catalog may include the following abbreviations.

| Abbreviation | Meaning | Abbreviation | Meaning |
|--------------|------------------------|--------------|-----------------------------------|
| AR | as required | HWHTF | hex washer head thread forming |
| ASM | assembly | INC | incorporated |
| CARR | carriage | LH | left hand |
| DEG | degrees | PH | pan head |
| FH | flat head | PPH | Phillips pan head |
| GA | gauge | PTO | power take off |
| HF | hex flange | RH | right hand |
| HFW | hex flange washer | SFH | slotted fillister head |
| HH | hex head | SH | square head |
| HHF | hex head flange | SHWH | slotted hex washer head |
| HHST | hex head self tapping | SPH | slotted pan head |
| HJ | hex jam | STD | standard |
| HOC | height-of-cut | TAP | self tapping |
| HS | hex socket | TH | truss head |
| HSBH | hex socket button head | TTH | Torx truss head |
| HSFH | hex socket flat head | WH | wing head |
| HSH | hex socket head | | |
| HWH | hex washer head | | |

Important Format Explanations

This catalog uses special formats to convey information in illustrations and parts lists. Specifically, one format is used in conjunction with service assemblies and another with quantities associated with reference numbers.

Service Assemblies

Parts within service assemblies have reference numbers in the form X:Y. X is the reference number of the service assembly and Y is a sequential number unique to each part within the service assembly.

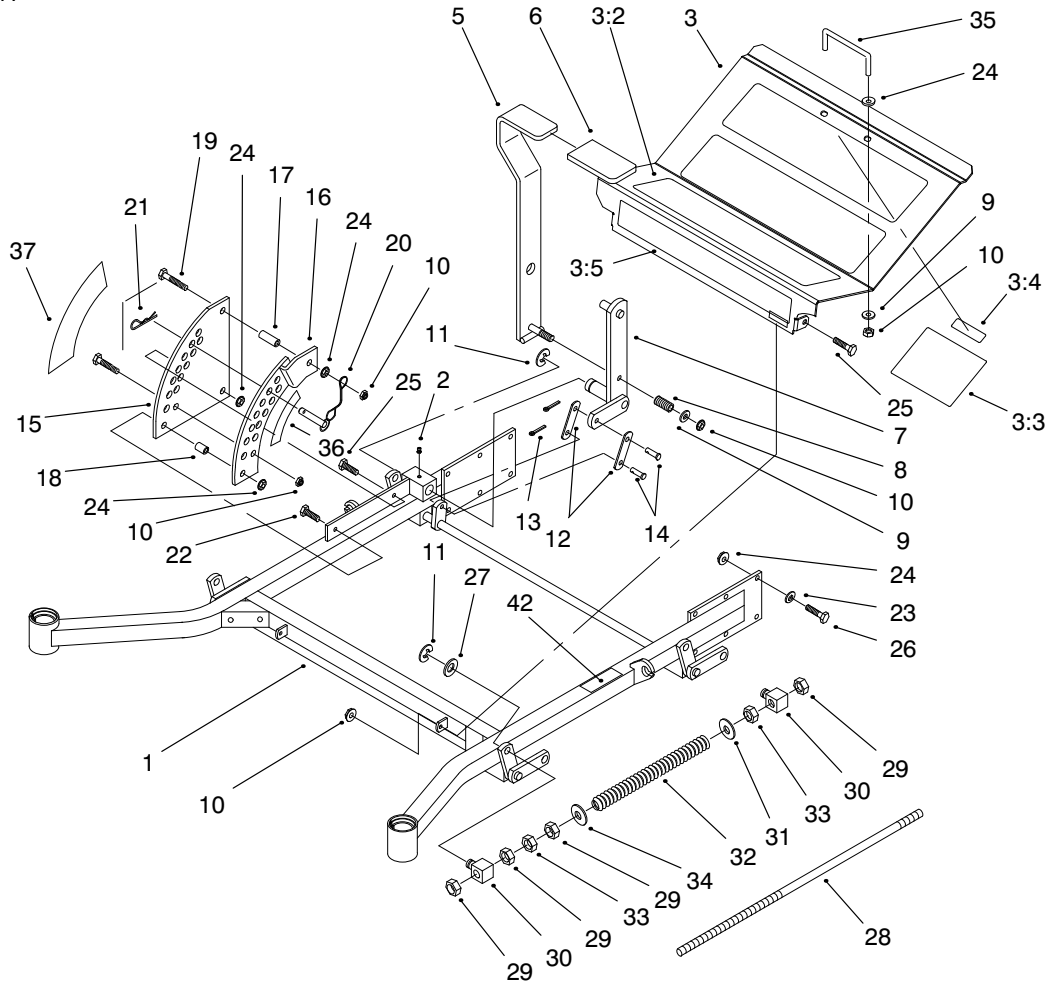
For example, a wheel assembly might be identified by reference number 6, the tire by 6:1, the valve by 6:2, and the wheel by 6:3. When you order the assembly identified by reference number 6, you receive all parts identified by reference numbers 6:1, 6:2, and 6:3. However, you may also order any part individually.

Reference numbers of this type appear in part lists and as callouts in illustrations.

Reference Numbers with Quantities

Illustrations may have a quantity in parentheses next to a reference number, in the form $X (Y)$. X is the reference number. Y in parentheses is the quantity of the part identified by the reference number.

For example, the illustration callout 4 (2) indicates that two parts are used in that instance.

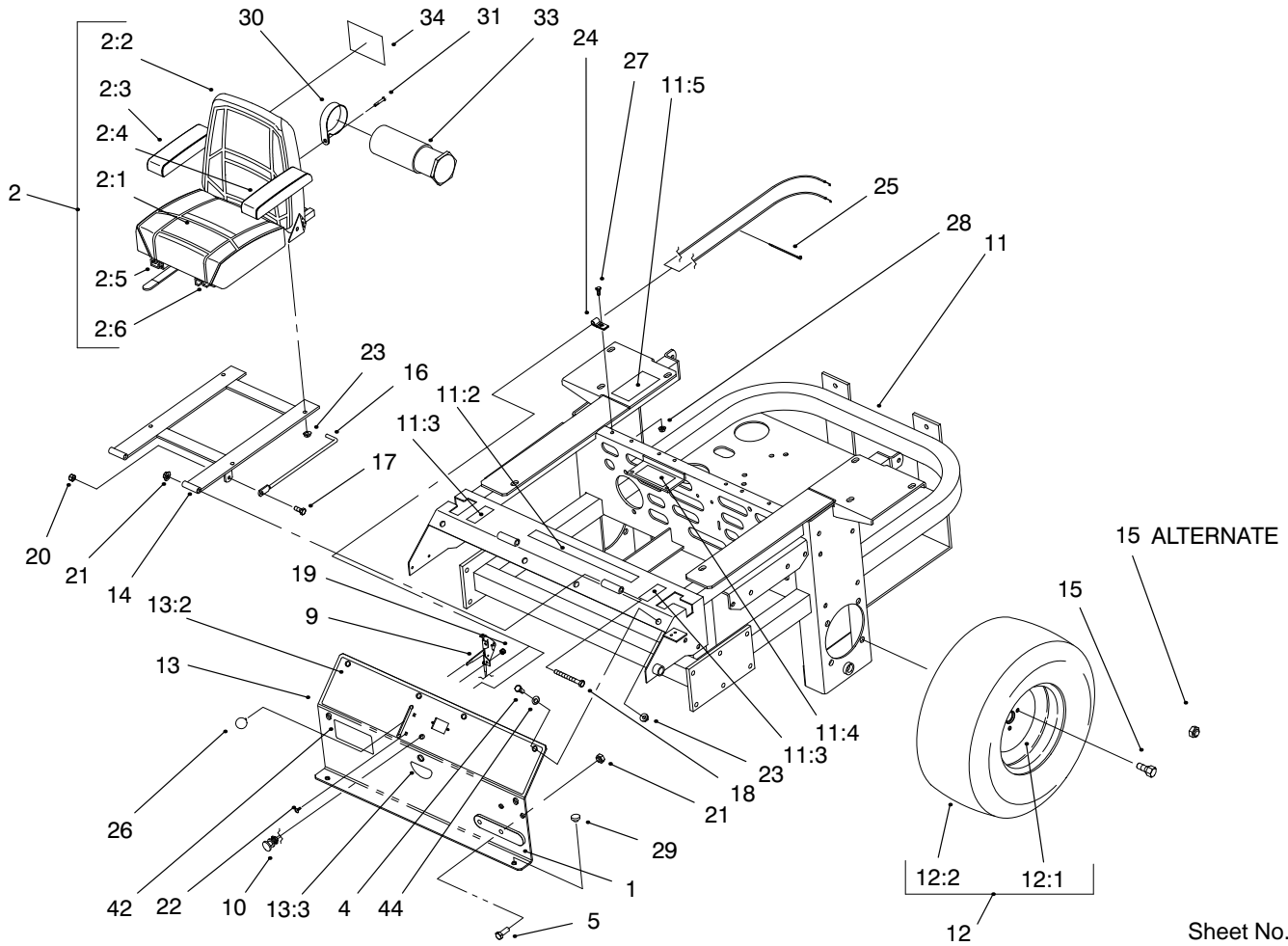


Sheet No.:2

Front Frame Assembly

| Ref. No. | Part No. | Qty. | Description |
|----------|----------|------|---------------------|
| 1 | E634861 | 1 | Front Frame ASM |
| 2 | 320-19 | 5 | Fitting-Grease |
| 3 | 99-4622 | 1 | Floorpan ASM |
| 3:2 | E633553 | 3 | Pad-Antiskid |
| 3:3 | E633766 | 1 | Decal-Service |
| 3:4 | 98-5954 | 1 | Decal-Cover Missing |
| 3:5 | E633737 | 1 | Decal-Z-Master |
| 5 | E632324 | 1 | Lever-Lift |
| 6 | E633295 | 1 | Grip-Lift Lever |
| 7 | E632219 | 1 | Arm-Deck Lift |
| 8 | E633325 | 1 | Spring-Compression |
| 9 | 3256-24 | 3 | Washer-Flat |
| 10 | 32146-2 | 7 | Nut-Hex Lock |
| 11 | E808505 | 5 | Ring-Retaining |
| 12 | E633068 | 2 | Arm-Deck Lift |
| 13 | 3272-10 | 2 | Pin-Cotter |
| 14 | E808284 | 2 | Pin-Clevis |
| 15 | E633889 | 1 | Plate-Deck Lift |
| 16 | E632899 | 1 | Plate-Deck Lift |
| 17 | E633082 | 1 | Bushing |
| 18 | E633080 | 1 | Bushing |
| 19 | 323-13 | 1 | Screw-HH |
| 20 | E633097 | 1 | Hitch Pin w/Lanyard |
| 21 | E806005 | 1 | Hairpin |
| 22 | 323-9 | 2 | Screw-HH |
| 23 | E303327 | 12 | Washer-Lock |

| Ref. No. | Part No. | Qty. | Description |
|----------|----------|------|---------------------|
| 24 | 3290-357 | 17 | Nut-Lock Flange |
| 25 | 323-6 | 3 | Screw-HH |
| 26 | 323-7 | 12 | Screw-HH |
| 27 | 3256-29 | 4 | Washer-Flat |
| 28 | E633096 | 2 | Rod-Deck Lift |
| 29 | 3217-11 | 8 | Nut |
| 30 | E633441 | 4 | Swivel-Deck Mount |
| 31 | 3256-7 | 2 | Washer-Flat |
| 32 | E653009 | 2 | Spring-Deck Support |
| 33 | 3218-6 | 4 | Nut-Hex Jam |
| 34 | 3256-27 | 2 | Washer-Flat |
| 35 | E633587 | 1 | Handle |
| 36 | E633706 | 1 | Decal-HOC |
| 37 | E633345 | 1 | Decal-HOC |
| 42 | E633818 | 1 | Decal |

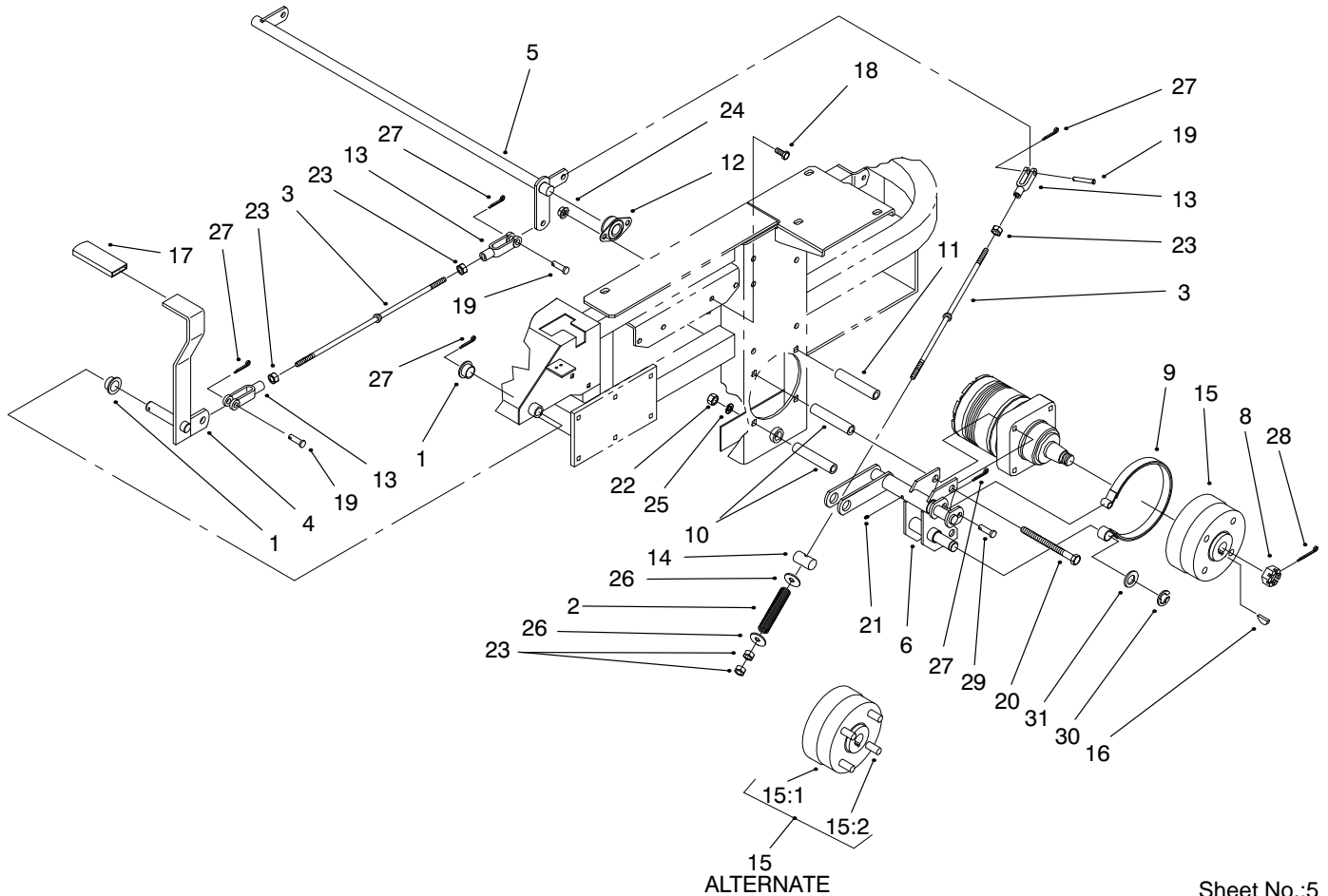


Sheet No.:4

Rear Frame And Wheel Assembly

| Ref. No. | Part No. | Qty. | Description |
|----------|----------|------|----------------------|
| 1 | E633964 | 1 | Stop-Park Brake |
| 2 | E633705 | 1 | Seat/Armrest ASM |
| 2:1 | E543407 | 1 | Cushion-Seat |
| 2:2 | E633709 | 1 | Cushion-Seat Back |
| 2:3 | E633710 | 1 | Armrest-RH |
| 2:4 | E633711 | 1 | Armrest-LH |
| 2:5 | E543401 | 4 | Spacer-Track |
| 2:6 | E523428 | 1 | 4" Locking Track Set |
| 4 | 322-3 | 8 | Screw-HH |
| 5 | 323-6 | 2 | Screw-HH |
| 9 | E633696 | 1 | Cable |
| 10 | E603336 | 1 | Cable-Choke |
| 11 | 99-4624 | 1 | Frame ASM |
| 11:2 | E513747 | 1 | Decal-Warning |
| 11:3 | E633354 | 2 | Decal-Motion Control |
| 11:4 | E513929 | 1 | Decal-Drive Release |
| 11:5 | E633771 | 1 | Decal-Pump Belt |
| 12 | E633007 | 2 | Wheel & Tire ASM |
| 12:1 | E633009 | 2 | Wheel |
| 12:2 | E633008 | 2 | Tire |
| 13 | 99-4623 | 1 | Console ASM |
| 13:2 | 99-4611 | 1 | Decal-Control Panel |
| 13:3 | E633346 | 1 | Decal-Fuel Valve |
| 14 | E632187 | 1 | Frame-Seat |
| 15 | E513011 | 8 | Nut |
| 15 | E633273 | 8 | Wheel Bolt |

| Ref. No. | Part No. | Qty. | Description |
|----------|----------|------|-----------------|
| 16 | E633293 | 1 | Rod-Seat Holdup |
| 17 | 322-5 | 1 | Screw-HH |
| 18 | 323-21 | 2 | Screw-HH |
| 19 | 32146-18 | 2 | Nut-Lock |
| 20 | 32146-4 | 2 | Nut-Lock |
| 21 | 32146-2 | 4 | Nut-Hex Lock |
| 22 | E807513 | 2 | Bolt-CARR |
| 23 | 32128-20 | 12 | Nut-Lock |
| 24 | E513762 | 1 | Clip |
| 25 | E303335 | 1 | Tie-Plastic |
| 26 | E513592 | 1 | Knob |
| 27 | 321-4 | 1 | Screw-HH |
| 28 | 32128-33 | 1 | Nut-Hex Flange |
| 29 | E513658 | 2 | Bumper |
| 30 | 2412-120 | 2 | Clamp-R |
| 31 | E803060 | 2 | Screw |
| 33 | 74-0720 | 1 | Tube-Manual |
| 34 | 93-7340 | 1 | Decal-Toro |
| 42 | E633736 | 1 | Decal-Z255 |
| 44 | 3256-23 | 6 | Washer-Flat |



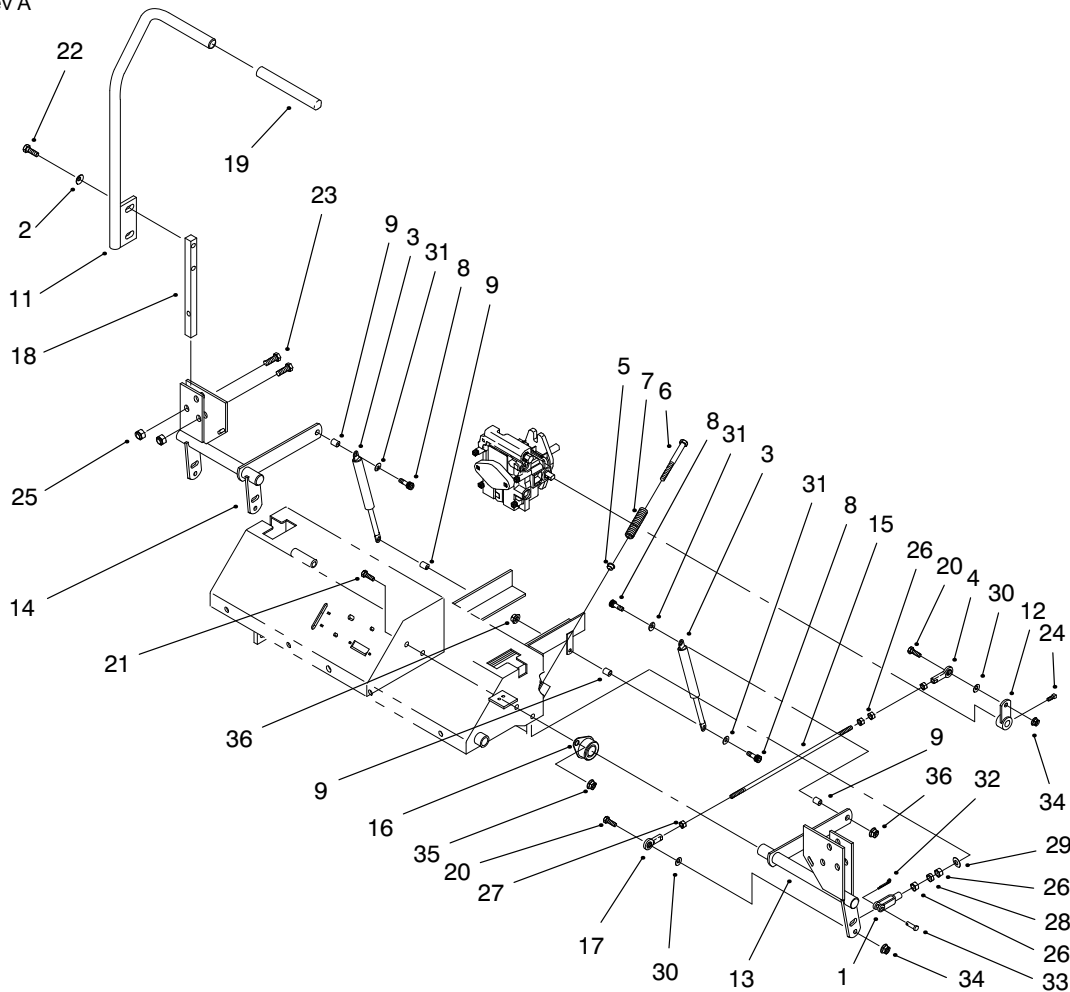
Sheet No.:5

Brake And Wheel Hub Assembly

| Ref. No. | Part No. | Qty. | Description |
|----------|----------|------|---------------------|
| 1 | E513140 | 2 | Bearing |
| 2 | E633454 | 2 | Spring-Brake |
| 3 | E633477 | 3 | Rod-Brake |
| 4 | E632489 | 1 | Lever-Brake |
| 5 | E632217 | 1 | Shaft-Brake |
| 6 | E632714 | 1 | Brake Bracket-LH |
| *7 | E632715 | 1 | Brake Bracket-RH |
| 8 | E809036 | 2 | Nut |
| 9 | E633693 | 2 | Brake Band |
| 10 | E633380 | 4 | Spacer |
| 11 | E633382 | 4 | Spacer |
| 12 | E633102 | 2 | Bearing-Side Flange |
| 13 | E633131 | 4 | Yoke-Brake Linkage |
| 14 | E633144 | 2 | Pin-Trunnion |
| 15 | E633548 | 2 | Hub-Wheel |
| 15 | E634927 | 2 | Wheel Hub w/Studs |
| 15:1 | E633980 | 2 | Hub |
| 15:2 | E633926 | 8 | Stud-Wheel |
| 16 | E807020 | 2 | Key-Woodruff |
| 17 | E633268 | 1 | Grip-Brake Lever |
| 18 | 323-4 | 4 | Screw-HH |
| 19 | E808285 | 4 | Pin-Clevis |
| 20 | 325-17 | 8 | Screw-HH |
| 21 | E811007 | 2 | Fitting-Grease |
| 22 | 3217-9 | 8 | Nut-HH |
| 23 | 3219-3 | 8 | Nut-Hex |

| Ref. No. | Part No. | Qty. | Description |
|----------|----------|------|-----------------|
| 24 | 3290-357 | 4 | Nut-Lock Flange |
| 25 | 3253-7 | 8 | Washer-Lock |
| 26 | 3256-4 | 4 | Washer-Flat |
| 27 | 3272-10 | 7 | Pin-Cotter |
| 28 | E806800 | 2 | Pin-Cotter |
| 29 | E808283 | 2 | Pin-Clevis |
| 30 | E808514 | 2 | E Ring Retainer |
| 31 | E805269 | 2 | Washer |

* Not Illustrated



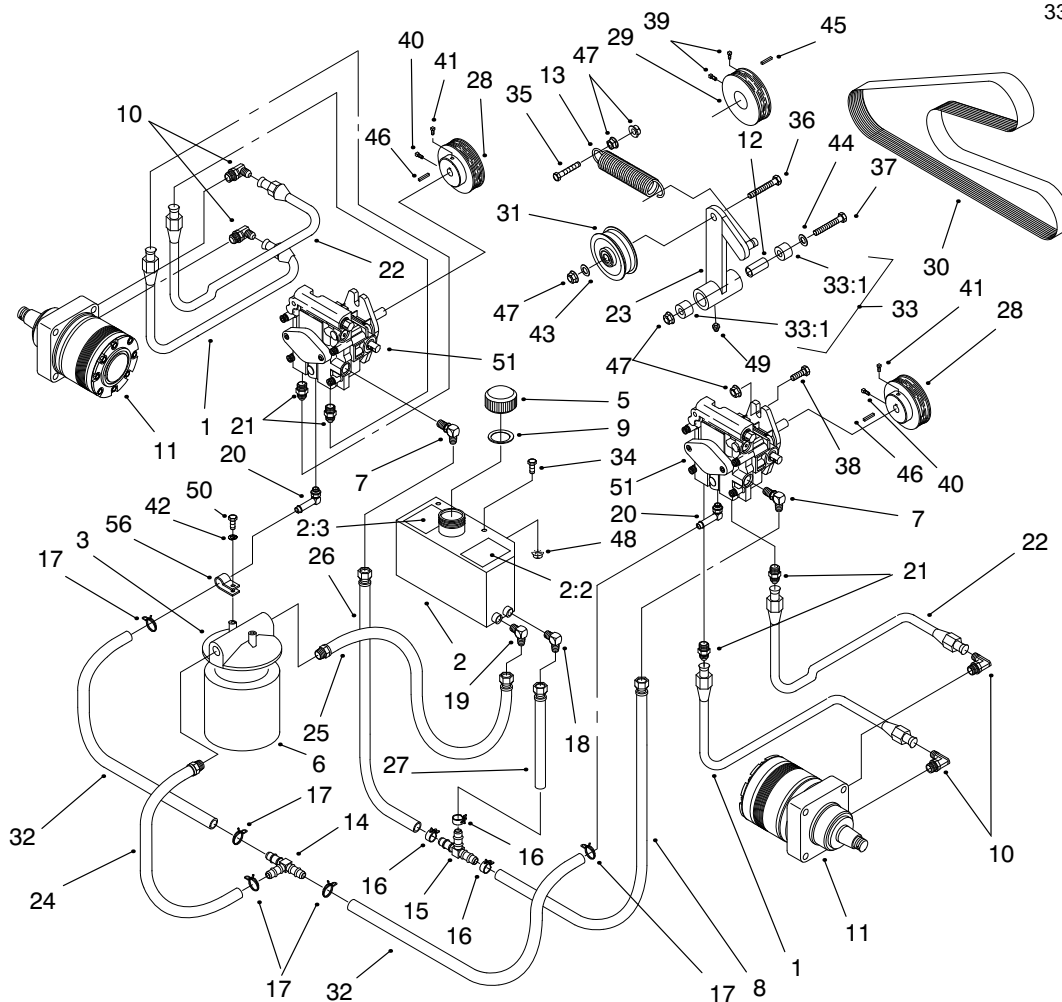
Sheet No.:6

Control Panel Assembly

| Ref. No. | Part No. | Qty. | Description |
|----------|----------|------|---------------------|
| 1 | E303105 | 2 | Yoke |
| 2 | E303327 | 4 | Washer-Lock |
| 3 | E523027 | 2 | Damper |
| 4 | E543017 | 2 | Ball Joint |
| 5 | E603735 | 2 | Bushing |
| 6 | E603737 | 2 | Bolt |
| 7 | E603807 | 2 | Spring |
| 8 | E809057 | 4 | Screw-HSH |
| 9 | E603903 | 4 | Spacer |
| *10 | E632191 | 1 | Lever-Control LH |
| 11 | E632193 | 1 | Lever-Control RH |
| 12 | E632208 | 2 | Arm-Pump Control |
| 13 | E632911 | 1 | Motion Control |
| 14 | E632912 | 1 | Motion Control |
| 15 | E633153 | 2 | Linkage |
| 16 | E633102 | 4 | Bearing-Side Flange |
| 17 | E633152 | 2 | Ball Joint LH |
| 18 | E633177 | 2 | Arm |
| 19 | E633257 | 2 | Grip |
| 20 | 322-6 | 4 | Screw-HH |
| 21 | 323-4 | 8 | Screw-HH |
| 22 | 323-6 | 4 | Screw-HH |
| 23 | 323-9 | 6 | Screw-HH |
| 24 | E803022 | 2 | Screw-Set |
| 25 | 32146-2 | 6 | Nut-Hex Lock |
| 26 | 3219-2 | 10 | Nut |

| Ref. No. | Part No. | Qty. | Description |
|----------|----------|------|-----------------|
| 27 | E804524 | 2 | Nut |
| 28 | 3220-2 | 2 | Nut-Jam |
| 29 | 3256-2 | 2 | Washer-Flat |
| 30 | 3256-3 | 4 | Washer-Flat |
| 31 | 3256-23 | 4 | Washer-Flat |
| 32 | 3272-5 | 2 | Pin-Cotter |
| 33 | E808280 | 2 | Pin-Clevis |
| 34 | 32128-20 | 4 | Nut-Lock |
| 35 | 3290-357 | 8 | Nut-Lock Flange |
| 36 | 32128-33 | 4 | Nut-Hex Flange |

* Not Illustrated

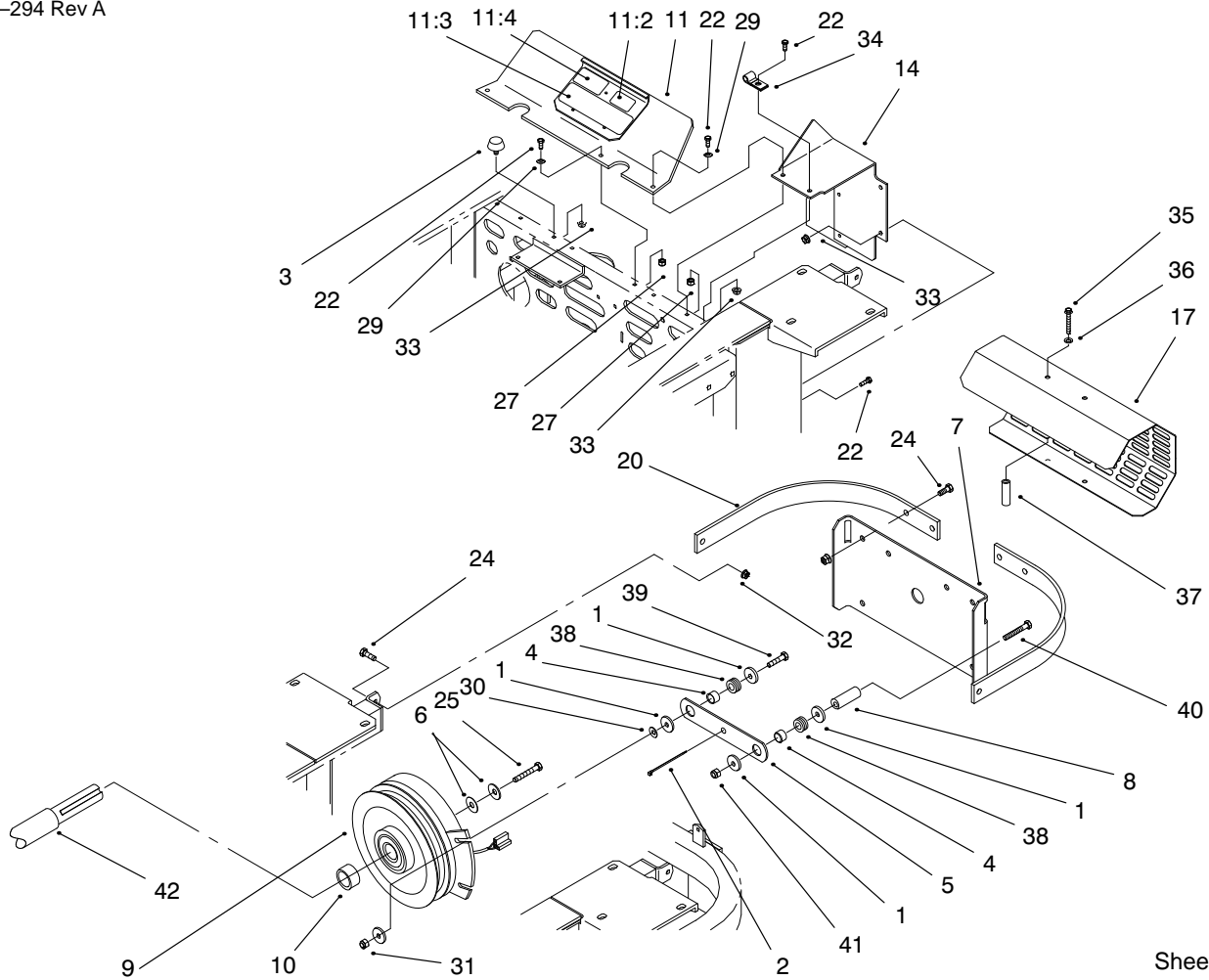


Sheet No.:7

Hydraulic System Assembly

| Ref. No. | Part No. | Qty. | Description | Ref. No. | Part No. | Qty. | Description |
|----------|----------|------|-----------------------|----------|----------|------|-----------------------|
| 1 | E633774 | 2 | Hose | 20 | E603989 | 2 | Elbow |
| 2 | 99-4625 | 1 | Hydraulic Tank ASM | 21 | E603990 | 4 | Adapter |
| 2:2 | 65-2690 | 1 | Decal-Hot Surface | 22 | E633775 | 2 | Hose |
| 2:3 | E513890 | 1 | Decal-Hydraulic Tank | 23 | E632201 | 1 | Arm-Pump Idler |
| 3 | E513006 | 1 | Filter Head | 24 | E632281 | 1 | Hose ASM-Low Pressure |
| 5 | E513167 | 1 | Cap | 25 | E632282 | 1 | Hose ASM-Low Pressure |
| 6 | E633750 | 1 | Filter-Hydro | 26 | E632285 | 1 | Hose ASM-Low Pressure |
| 6 | E633752 | 1 | Filter-Winter Hydro | 27 | E632286 | 1 | Hose ASM-Low Pressure |
| 7 | E513840 | 2 | Elbow | 28 | E633568 | 2 | Sheave |
| 8 | E522217 | 1 | Hose ASM-Low Pressure | 29 | E633567 | 1 | Sheave |
| 9 | E523103 | 1 | Gasket | 30 | E633749 | 1 | Belt |
| 10 | E633786 | 4 | Elbow 90° | 31 | E633167 | 1 | Pulley-Idler |
| 11 | E523328 | 2 | Motor-Wheel | 32 | E633335 | 2 | Hose-Low Pressure |
| *11:1 | E000099 | 2 | Kit-Seal | 33 | E634277 | 1 | Arm ASM |
| *11:2 | E807020 | 2 | Key-Woodruff | 33:1 | E513034 | 2 | Bearing-Pivot |
| *11:3 | E000139 | 2 | Kit-Bearing | 34 | 321-4 | 2 | Screw-HH |
| *11:4 | E809036 | 2 | Nut | 35 | 323-8 | 1 | Screw-HH |
| 12 | E603384 | 1 | Bushing | | | | |
| 13 | E603413 | 1 | Spring-Extension | | | | |
| 14 | E603721 | 1 | Fitting-Tee | | | | |
| 15 | E603722 | 1 | Fitting-Tee | | | | |
| 16 | E603826 | 3 | Clamp-Hose | | | | |
| 17 | E603827 | 5 | Clamp-Hose | | | | |
| 18 | E603987 | 1 | Elbow | | | | |
| 19 | E603988 | 1 | Elbow | | | | |

* Not illustrated



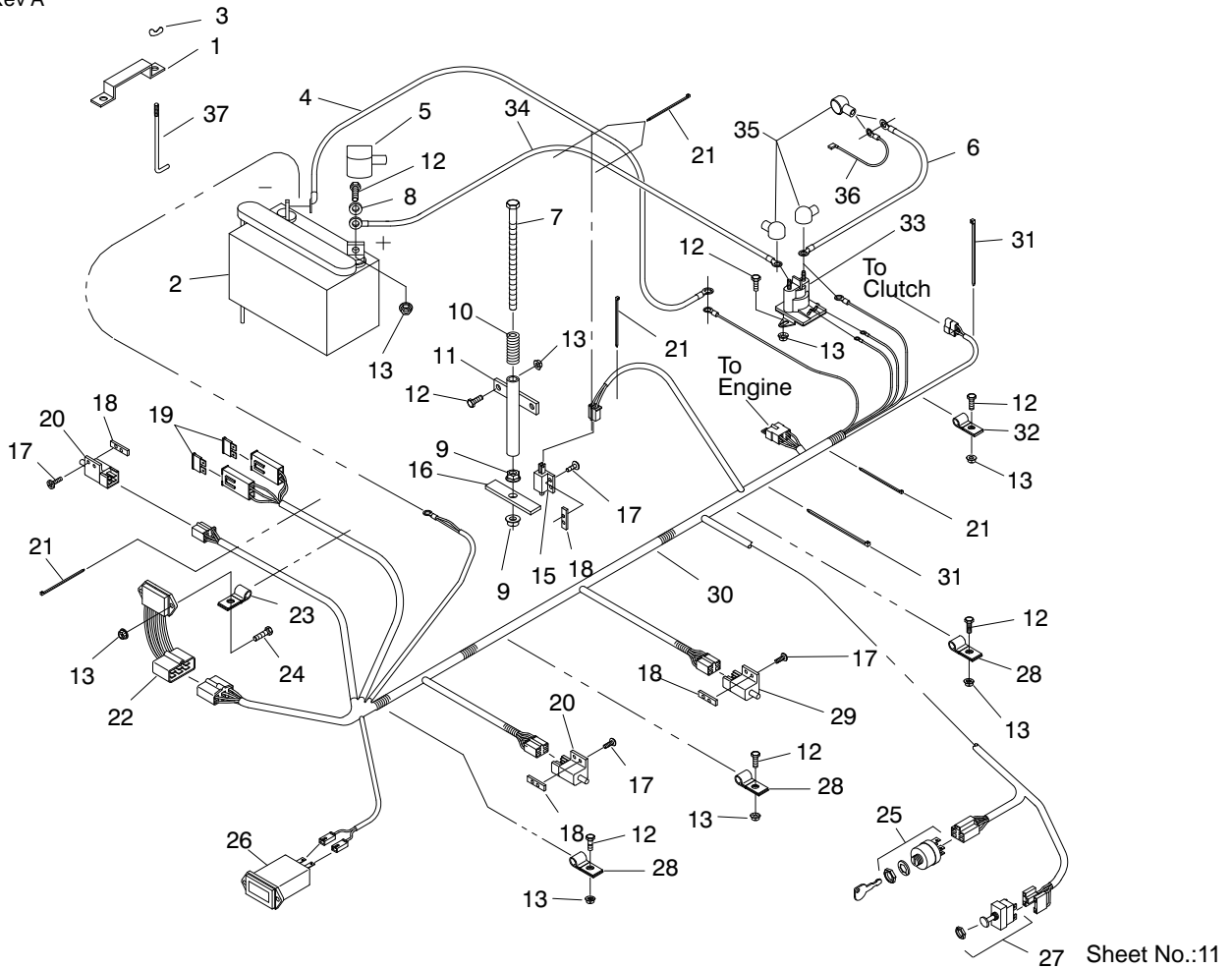
Sheet No.:9

Shields And Clutch Assembly

| Ref. No. | Part No. | Qty. | Description |
|----------|----------|------|------------------|
| 1 | E613235 | 4 | Washer |
| 2 | E303335 | 1 | Tie-Plastic |
| 3 | E523420 | 2 | Bumper |
| 4 | E633545 | 2 | Spacer-Grommet |
| 5 | E633543 | 1 | Strap-Clutch |
| 6 | E603610 | 2 | Disc-Spring |
| 7 | E633615 | 1 | Guard |
| 8 | E633988 | 1 | Spacer |
| 9 | E633099 | 1 | Clutch |
| 10 | E633179 | 1 | Spacer |
| 11 | E634862 | 1 | Shield ASM |
| 11:2 | E513748 | 1 | Decal-Guard |
| 11:3 | E303517 | 1 | Decal-Belt Drive |
| 11:4 | E633462 | 1 | Decal-Important |
| 14 | E634796 | 1 | Shield-LH |
| 17 | E633466 | 1 | Guard-Muffler |
| *18 | E634797 | 1 | Shield-RH |
| 20 | E633613 | 2 | Bracket-Guard |
| 22 | 321-4 | 10 | Screw-HH |
| 24 | 323-6 | 6 | Screw-HH |
| 25 | 3212-10 | 1 | Screw |
| 27 | 32146-17 | 4 | Nut-Lock |
| 29 | 3256-2 | 4 | Washer-Flat |
| 30 | 3256-3 | 1 | Washer-Flat |
| 31 | 32128-20 | 1 | Nut-Lock |
| 32 | 3290-357 | 4 | Nut-Lock Flange |

| Ref. No. | Part No. | Qty. | Description |
|----------|----------|------|---------------------|
| 33 | 32128-33 | 7 | Nut-Hex Flange |
| 34 | E633396 | 1 | Clip |
| 35 | E809076 | 2 | Screw-HH |
| 36 | E323235 | 2 | Washer-Spring |
| 37 | E323236 | 2 | Spacer |
| 38 | E633630 | 2 | Grommet |
| 39 | 322-6 | 1 | Screw-HH |
| 40 | E800284 | 1 | Screw |
| 41 | 3296-29 | 1 | Nut-Lock |
| 42 | E633830 | 1 | Kohler Command Ch25 |

* Not Illustrated

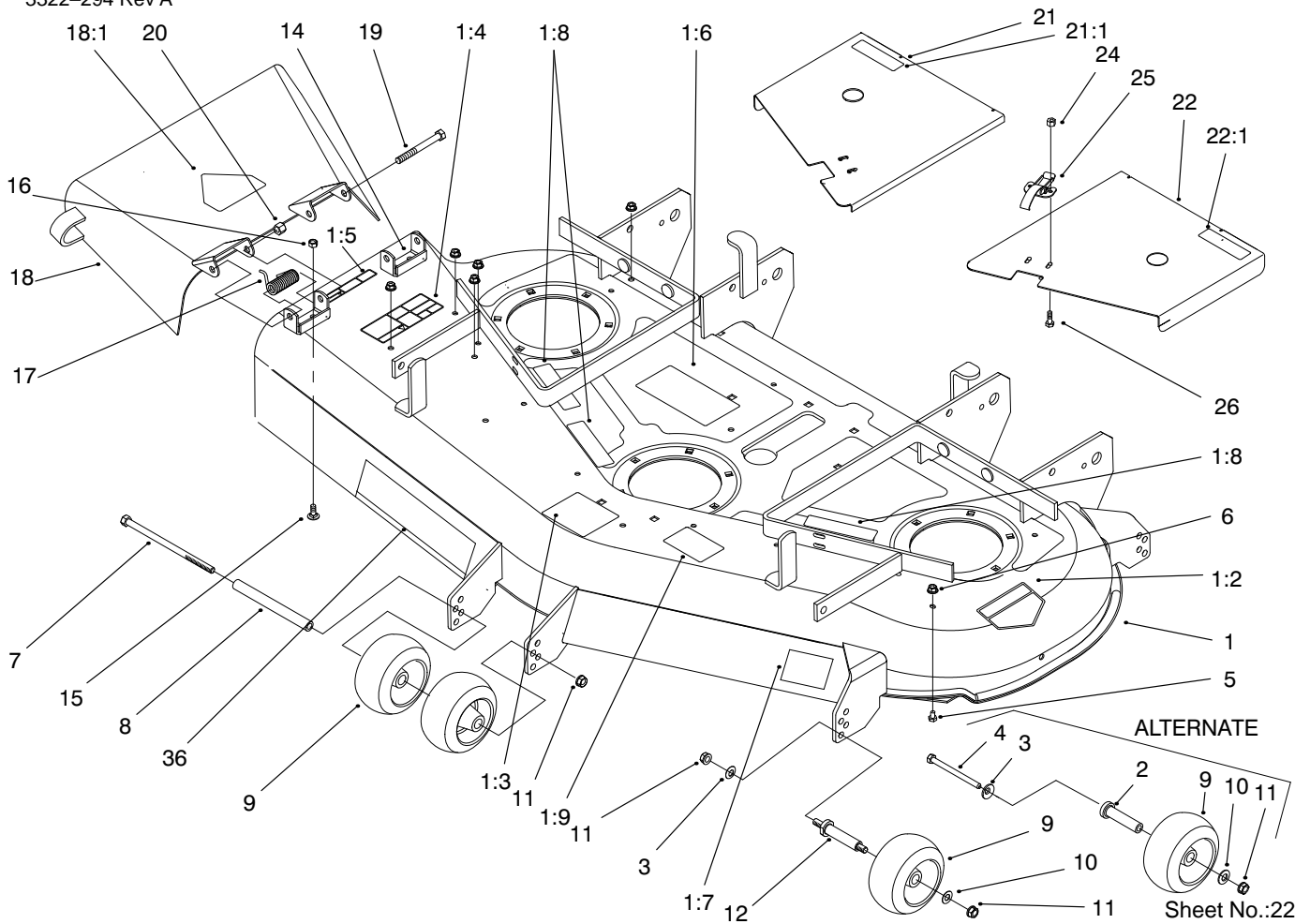


27 Sheet No.:11

Electrical System Assembly

| Ref. No. | Part No. | Qty. | Description |
|----------|----------|------|--------------------|
| 1 | E633652 | 1 | Strap-Hold Down |
| 2 | E603479 | 1 | Battery |
| 3 | E543792 | 2 | Wingnut |
| 4 | E633307 | 1 | Wire-Ground |
| 5 | E543391 | 1 | Insulator-Battery |
| 6 | E633306 | 1 | Wire-Starter |
| 7 | E800282 | 1 | Screw |
| 8 | 3256-2 | 2 | Washer-Flat |
| 9 | 32128-20 | 2 | Nut-Lock |
| 10 | E523415 | 1 | Spring |
| 11 | E522424 | 1 | Mount-Spring |
| 12 | 321-4 | 8 | Screw-HH |
| 13 | 32128-33 | 11 | Nut-Hex Flange |
| 15 | E513152 | 1 | Switch-Seat |
| 16 | E513180 | 1 | Actuator-Switch |
| 17 | E803028 | 8 | Screw |
| 18 | E633181 | 4 | Plate |
| 19 | E816001 | 2 | Fuse-20 Amp |
| 20 | E633111 | 2 | Switch-Drive Lever |
| 21 | E303287 | 5 | Tie-Plastic |
| 22 | E543316 | 1 | Module-Interlock |
| 23 | E513762 | 1 | Clip |
| 24 | 321-6 | 1 | Screw-HH |
| 25 | E543070 | 1 | Switch-Ignition |
| 26 | E513374 | 1 | Meter-Hour |
| 27 | E633673 | 1 | Switch-PTO |

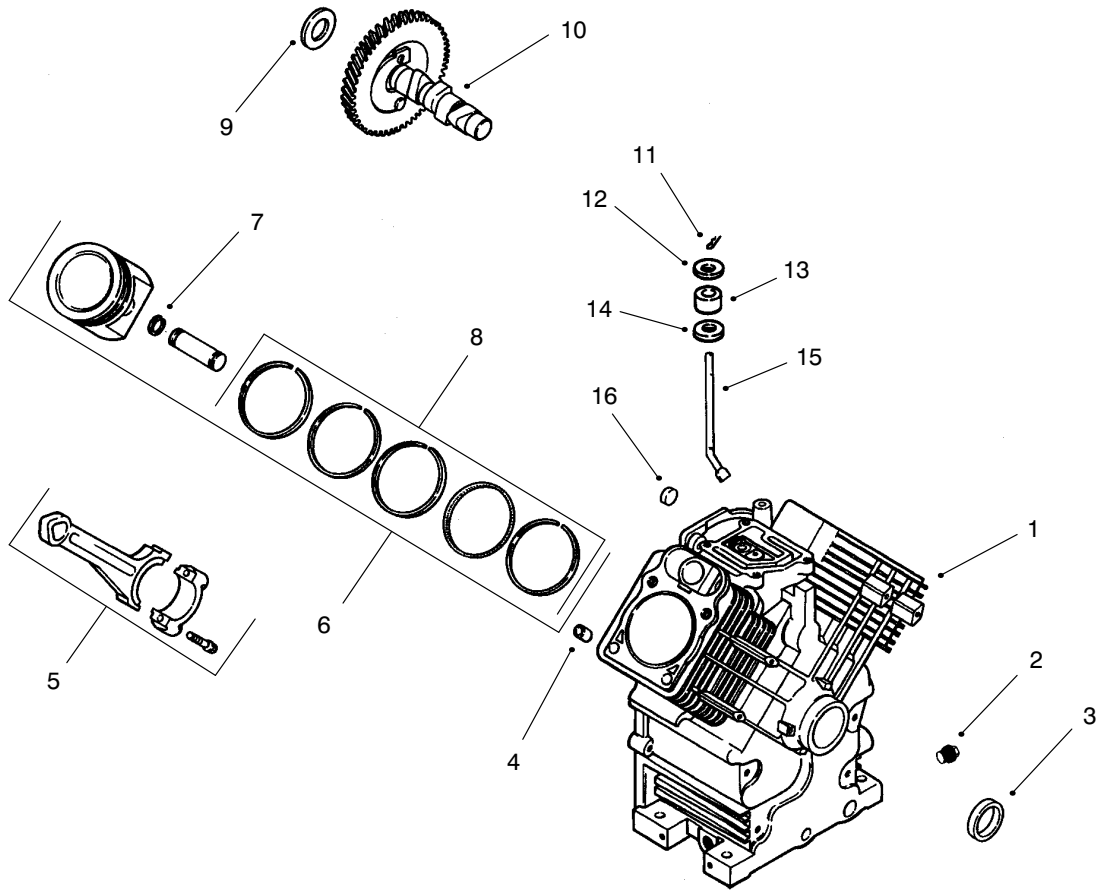
| Ref. No. | Part No. | Qty. | Description |
|----------|----------|------|-----------------------|
| 28 | E633396 | 3 | Clip |
| 29 | E633110 | 1 | Switch-Brake |
| 30 | E643119 | 1 | Harness |
| 31 | E303335 | 2 | Tie-Plastic |
| 32 | E323229 | 1 | Clip |
| 33 | E513075 | 1 | Switch-Solenoid |
| 34 | E523281 | 1 | Wire-Starter |
| 35 | E543393 | 3 | Insulator-Solenoid |
| 36 | E543084 | 1 | Wire-Starter Solenoid |
| 37 | E633651 | 2 | Bolt-Battery |



Cover And Rollers Assembly

| Ref. No. | Part No. | Qty. | Description |
|----------|------------|------|---------------------|
| 1 | 99-4588 | 1 | Deck ASM |
| 1:2 | 43-8480 | 1 | Decal-Danger |
| 1:3 | 98-3798 | 1 | Decal-Gage Wheel |
| 1:4 | 66-1340 | 1 | Decal-Discharge |
| 1:5 | 66-6380 | 1 | Decal-Danger |
| 1:6 | 98-3799 | 1 | Decal-Belt Routing |
| 1:7 | 98-3269 | 1 | Decal-Made In USA |
| 1:8 | 98-5954 | 3 | Decal-Cover Missing |
| 1:9 | 93-7818 | 1 | Decal-Blade Bolt |
| | | | Torque |
| 2 | 98-3777 | 4 | Spacer-Wheel |
| 3 | 98-5975 | 4 | Washer |
| 4 | 98-5961 | 4 | Screw-HH |
| 5 | 321-1 | 6 | Capscrew |
| 6 | 32128-33 | 6 | Nut-Hex Flange |
| 7 | 323-28 | 1 | Screw-HH |
| 8 | 98-5967 | 1 | Spacer-Wheel |
| 9 | 68-2730 | 6 | Wheel-Gage |
| 10 | E373034 | 3 | Washer-Flat |
| 11 | 3290-357 | 7 | Nut-Lock |
| 12 | 99-2842 | 4 | Spacer-Wheel |
| 14 | 29-5590-03 | 2 | Bracket-Pivot |
| 15 | 3230-18 | 4 | Screw-CARR |
| 16 | 32152-1 | 4 | Nut-Lock |
| 17 | 40-6230 | 2 | Spring-Torsion |
| 18 | 98-5984 | 1 | Deflector ASM |

| Ref. No. | Part No. | Qty. | Description |
|----------|----------|------|---------------|
| 18:1 | 54-9220 | 1 | Decal-Warning |
| 19 | 3211-15 | 2 | Screw-HH |
| 20 | 3296-5 | 2 | Nut-Lock |
| 21 | 98-5963 | 1 | Cover ASM RH |
| 21:1 | 67-5360 | 1 | Decal-Danger |
| 22 | 98-5965 | 1 | LH Cover ASM |
| 22:1 | 67-5360 | 1 | Decal-Danger |
| 24 | 32128-17 | 4 | Nut-Lock |
| 25 | 249-21 | 2 | Latch |
| 26 | 3290-321 | 4 | Screw-HH |
| 36 | 98-5953 | 1 | Decal-SFS 52" |

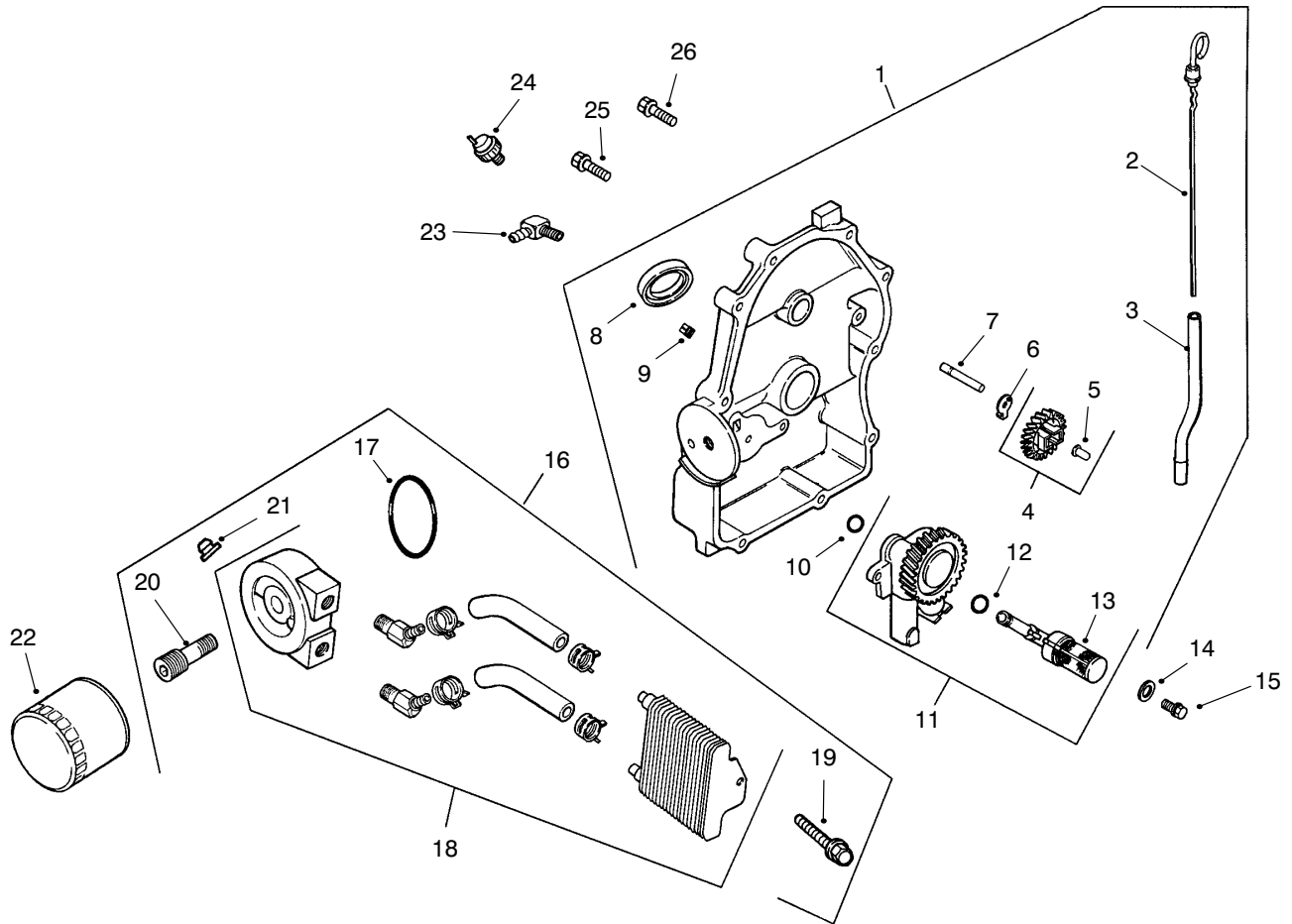


Group 2 – Crankcase (CH25S 68606 Kohler)

| Ref. No. | Part No. | Description | No. Used |
|----------|-----------|--|----------|
| 1 | 24 561 33 | Cylinder Block (Includes 2,4,16,17) | 1 |
| 2 | X-75-10 | Plug, drain | 2 |
| 3 | 24 032 01 | Seal, oil front | 1 |
| 4 | 12 380 17 | Pin, dowel locating | 6 |
| 5 | 24 067 13 | Connecting Rod (Std.) | 2 |
| | 24 067 14 | Connecting Rod (.25) | 2 |
| 6 | 24 874 06 | Piston w/Ring Set (Std.) | 2 |
| 7 | 24 018 01 | Retainer, piston pin | 4 |
| 8 | 24 108 04 | Ring Set (Std.) | 2 |
| 9 | 12 422 09 | Shim, camshaft – red | A/R |
| | 12 422 13 | Shim, camshaft – black | A/R |
| | 12 422 07 | Shim, camshaft – white | A/R |
| | 12 422 08 | Shim, camshaft – blue | A/R |

| Ref. No. | Part No. | Description | No. Used |
|----------|-----------|--|----------|
| | 12 422 10 | Shim, camshaft – yellow | A/R |
| | 12 422 11 | Shim, camshaft – green | A/R |
| | 12 422 12 | Shim, camshaft – gray | A/R |
| 10 | 24 012 10 | Camshaft | 1 |
| 11 | 12 380 04 | Pin, hitch | 1 |
| 12 | M-0631005 | Washer, flat | 1 |
| 13 | 12 032 01 | Seal, governor cross shaft | 1 |
| 14 | X-25-102 | Washer, plain | 1 |
| 15 | 24 144 01 | Shaft, governor cross | 1 |
| 16 | 52 139 09 | Plug, cup | 1 |
| 17 | 24 113 56 | Not Illustrated Decal, Service | 1 |

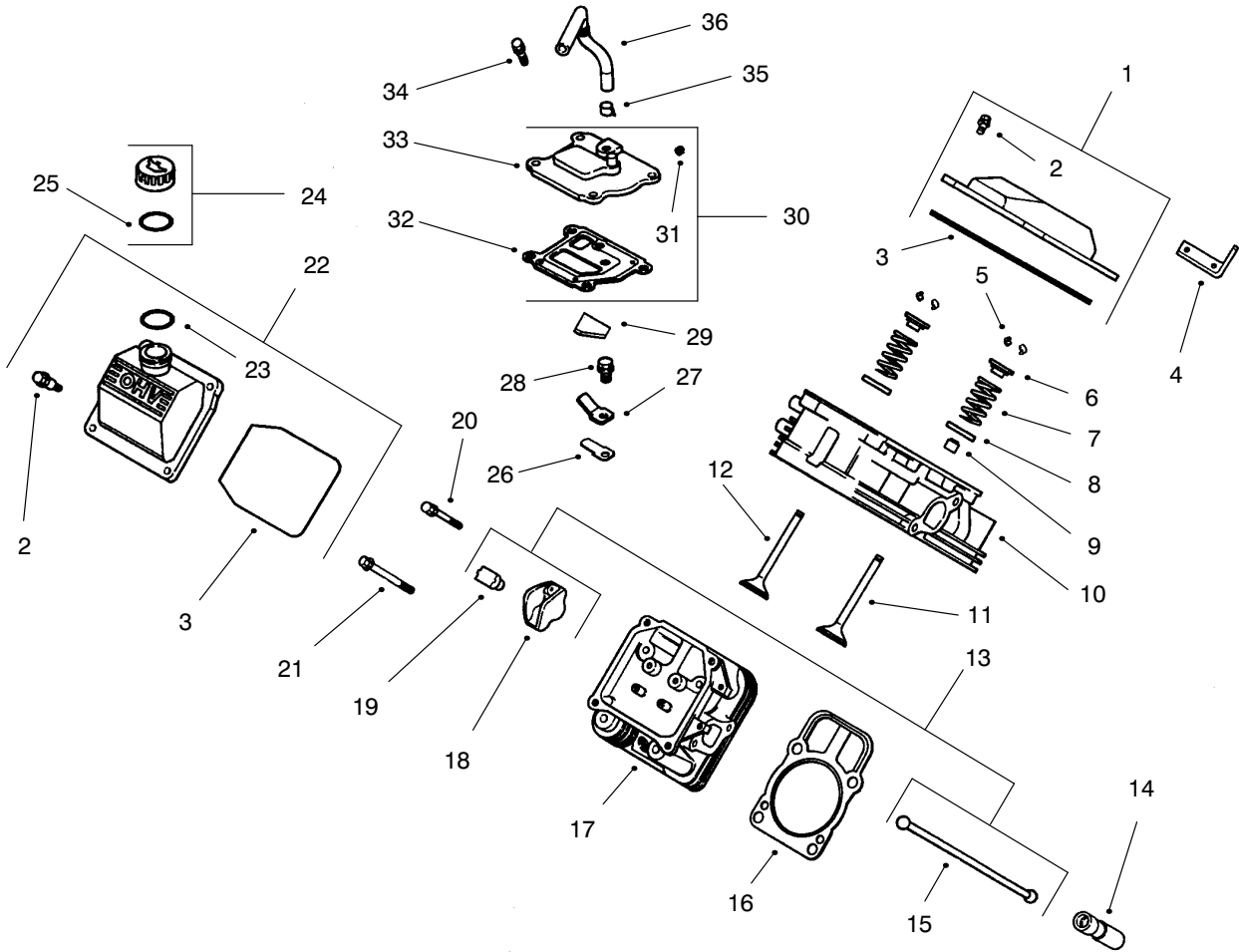
Obtain Parts From Kohler



Group 3 – Oil Pan/Lubrication (CH25S 68606 Kohler)

| Ref. No. | Part No. | Description | No. Used | Ref. No. | Part No. | Description | No. Used |
|----------|-----------|--|----------|----------|-----------|-------------------------------|----------|
| 1 | 24 009 83 | Plate, closure assembly (Includes 2-12) | 1 | 15 | M-0645025 | Screw, hex flange | 2 |
| 2 | 24 038 06 | Dipstick | 1 | 16 | 54 755 14 | Kit, oil cooler (Incl. 17-21) | 1 |
| 3 | 24 123 08 | Tube, dipstick | 1 | 17 | 24 253 17 | O-Ring | 1 |
| 4 | 24 043 12 | Kit, governor gear (Includes 5) | 1 | 18 | 24 594 15 | Cooler, oil | 1 |
| 5 | 12 380 01 | Pin, governor regulating | 1 | 19 | 24 086 12 | Screw, hex | 2 |
| 6 | 52 448 02 | Tab, locking | 1 | 20 | 24 136 05 | Nipple, oil filter | 1 |
| 7 | 12 144 02 | Shaft, governor gear | 1 | 21 | 24 100 01 | Nut, plastic | 2 |
| 8 | 52 032 08 | Seal, oil (PTO end) | 1 | 22 | 52 050 02 | Filter, oil | 1 |
| 9 | X-75-23 | Plug, pipe 1/8" | 2 | 23 | 25 155 02 | Connector | 1 |
| 10 | 24 153 08 | O-Ring | 1 | 24 | 24 099 03 | Switch, pressure | 1 |
| 11 | 24 393 10 | Oil pump assembly (Includes 12,13) | 1 | 25 | 24 086 16 | Screw, hex flange | 9 |
| 12 | 24 153 01 | O-Ring, oil pick-up | 1 | 26 | 24 086 17 | Screw, hex flange | 1 |
| 13 | 24 381 04 | Pick-up, oil | 1 | | | Not Illustrated | |
| 14 | M-0631005 | Washer, plain 6 mm | 2 | 27 | 24 113 25 | Decal, oil cooler | 1 |

Obtain Parts From Kohler

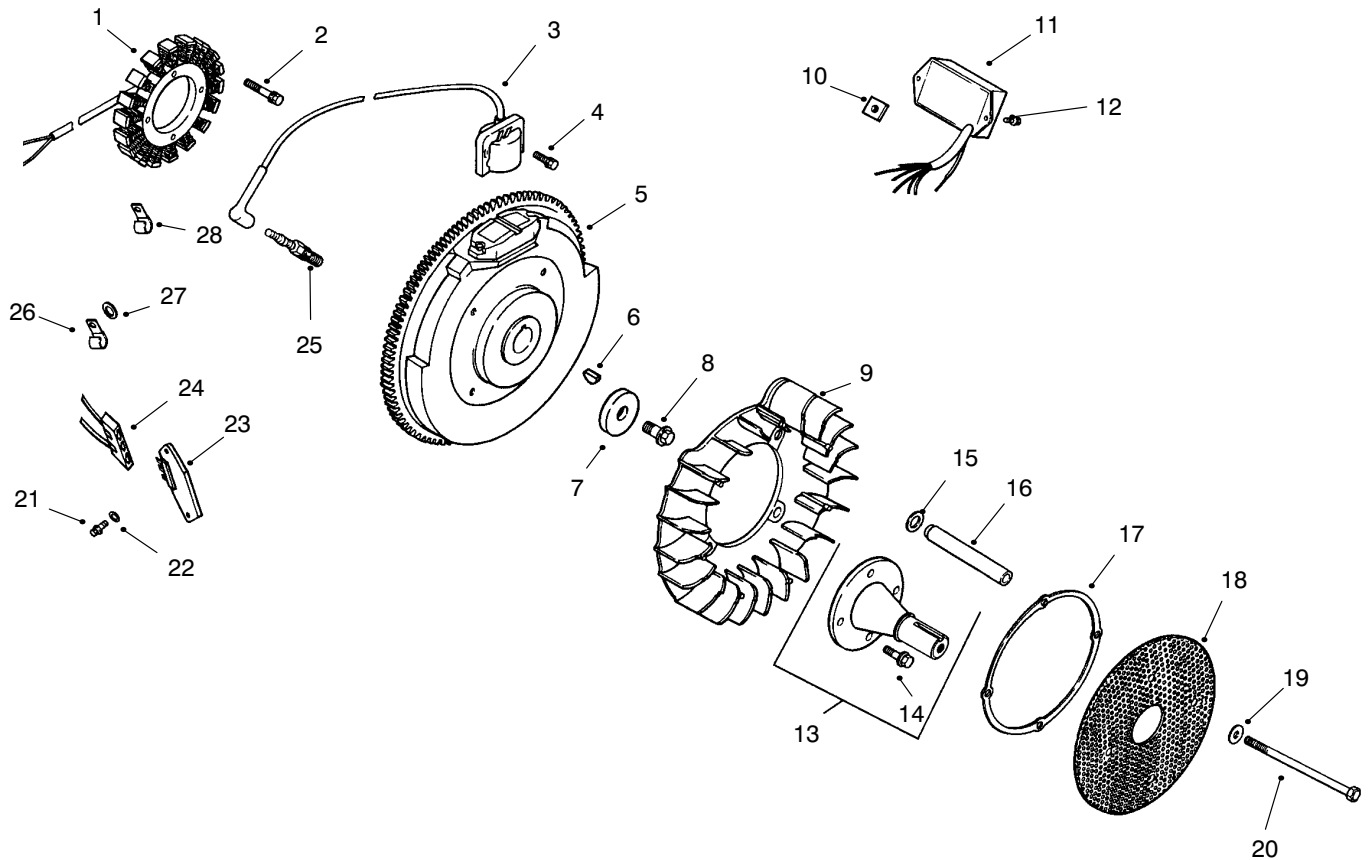


Group 4 – Head/Valve/Breather (CH25S 68606 Kohler)

| Ref. No. | Part No. | Description | No. Used |
|----------|-----------|--|----------|
| 1 | 24 755 74 | Kit, valve cover – plain (Includes 2-3) | 1 |
| 2 | 24 086 32 | Screw, shoulder | 4 |
| 3 | 24 153 16 | O-Ring, valve cover | 1 |
| 4 | 24 445 01 | Strap, lifting | 1 |
| 5 | 12 755 03 | Kit, retainer | 4 |
| 6 | 12 173 01 | Cap, valve spring | 4 |
| 7 | 24 089 02 | Spring, valve | 4 |
| 8 | 235011 | Retainer, spring | 4 |
| 9 | 24 032 05 | Seal, valve stem | 2 |
| 10 | 24 318 13 | Head assembly, #1 cylinder | 1 |
| 11 | 24 017 01 | Valve, intake (Std.) | 2 |
| | 24 017 02 | Valve, intake (.25) | 2 |
| 12 | 24 016 01 | Valve, exhaust (Std.) | 2 |
| | 24 016 02 | Valve, exhaust (.25) | 2 |
| 13 | 24 755 66 | Kit, valve train (Includes 15,18,19) | 1 |
| 14 | 12 351 02 | Lifter, valve | 4 |
| 15 | 24 411 05 | Rod, push | 4 |
| 16 | 24 041 37 | Gasket, cylinder head | 2 |
| 17 | 24 318 14 | Head assembly, #2 cylinder | 1 |

| Ref. No. | Part No. | Description | No. Used |
|----------|-----------|--|----------|
| 18 | 25 186 01 | Arm, rocker | 4 |
| 19 | 24 599 01 | Pivot, rocker arm | 4 |
| 20 | M-0640034 | Screw, hex. flange | 4 |
| 21 | 24 086 44 | Screw, hex. flange | 8 |
| 22 | 24 755 75 | Kit, valve cover – oil fill (Includes 2,3,23) | 1 |
| 23 | 24 153 09 | O-Ring | 1 |
| 24 | 24 755 46 | Kit, oil fill cap (Includes 25) | 1 |
| 25 | 12 153 03 | O-Ring, oil fill cap | 1 |
| 26 | 24 402 03 | Reed, breather | 1 |
| 27 | 12 018 01 | Retainer, breather reed | 1 |
| 28 | M-0545010 | Screw, hex. flange | 1 |
| 29 | 24 050 01 | Filter, breather | 1 |
| 30 | 24 033 01 | Kit, breather (Includes 31-33) | 1 |
| 31 | X-75-23 | Plug, allen head pipe | 1 |
| 32 | 24 041 23 | Gasket, breather | 1 |
| 33 | 24 096 02 | Cover, breather | 1 |
| 34 | M-0645020 | Screw, hex. flange | 4 |
| 35 | X-426-9 | Clamp, breather | 1 |
| 36 | 24 326 06 | Hose, breather | 1 |

Obtain Parts From Kohler

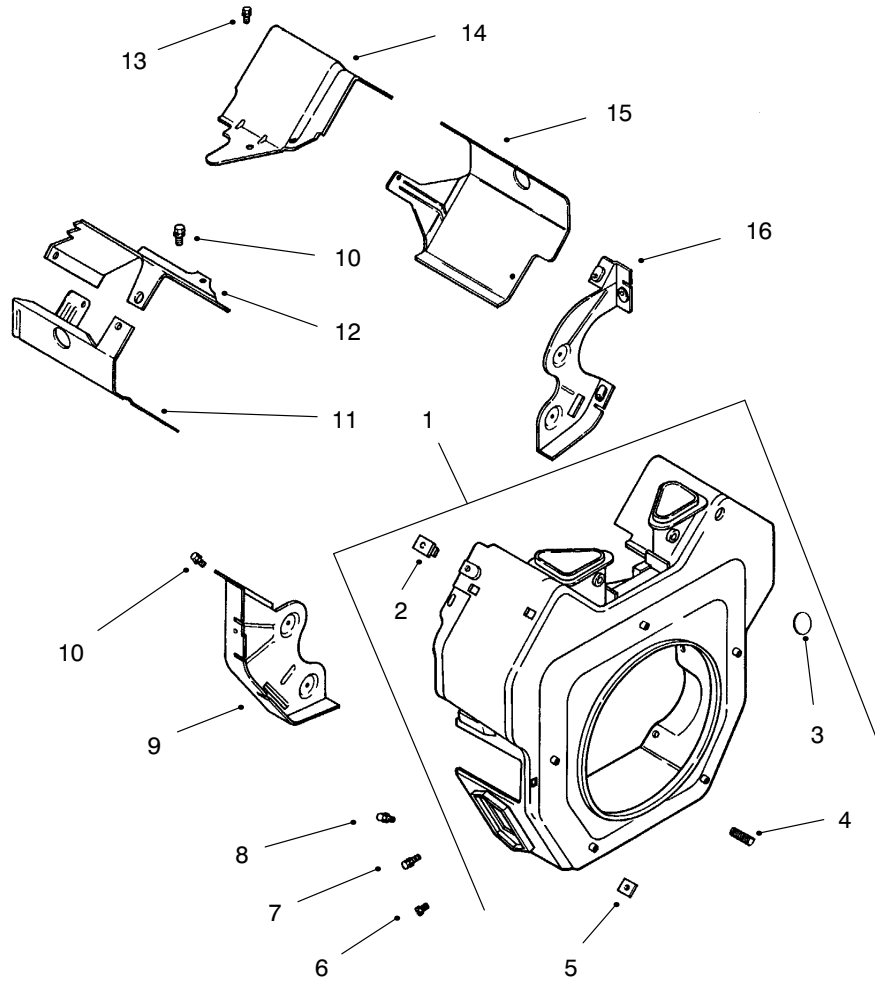


Group 5 – Ignition/Electrical (CH25S 68606 Kohler)

| Ref. No. | Part No. | Description | No. Used |
|----------|-----------|---|----------|
| 1 | 54 755 09 | Kit, 15 amp stator (Incl. 24 126 71 bracket) | 1 |
| 2 | M-0548025 | Screw, hex. cap | 2 |
| 3 | 24 584 11 | Module, ignition | 2 |
| 4 | M-0561025 | Screw, hex. socket hd. | 4 |
| 5 | 24 025 03 | Flywheel | 1 |
| 6 | X-42-15 | Key | 1 |
| 7 | 12 468 03 | Washer, plain 3/8" | 1 |
| 8 | 12 086 14 | Screw, hex flange | 1 |
| 9 | 24 157 03 | Fan | 1 |
| 10 | 24 100 02 | Nut, plastic | 2 |
| 11 | 24 584 09 | Module, spark advance | 1 |
| 12 | 24 086 41 | Screw, phillips hd. | 2 |
| 13 | 24 755 08 | Kit, front drive shaft (Includes 14) | 1 |
| 14 | M-0839025 | Screw, hex flange | 4 |
| 15 | 24 468 11 | Washer, spring 10mm | 4 |
| 16 | 24 112 14 | Spacer | 4 |
| 17 | 24 141 06 | Ring, support | 1 |
| 18 | 24 162 22 | Screen, grass | 1 |

| Ref. No. | Part No. | Description | No. Used |
|----------|-----------|---|----------|
| 19 | X-25-53 | Washer, plain 1/4" | 4 |
| 20 | M-0603100 | Screw, hex | 4 |
| 21 | 24 086 18 | Screw, phillips hd. | 2 |
| 22 | X-25-92 | Washer, plain 3/16 | 2 |
| 23 | 25 403 03 | Rectifier-regulator 15 amp | 1 |
| 24 | 236602 | Connector | 1 |
| 25 | 12 132 06 | Spark Plug | 2 |
| 26 | 47 154 01 | Clip, cable | 1 |
| 27 | X-25-63 | Washer, plain 1/4" | 1 |
| 28 | 48 154 02 | Clip, cable | 1 |
| | | Not Illustrated | |
| | 25 518 28 | Lead, black, (4" – 18 gauge – insulated grip barrel eyelet terminals) | 1 |
| | 24 176 38 | Harness, wiring | 1 |
| | 24 755 56 | Kit, wiring (Includes Terminal #25 542 17 & Tie X-468-1) | 1 |
| | 24 126 71 | Bracket, stator wire | 1 |
| | X-22-11 | Washer, lock | 1 |

Obtain Parts From Kohler

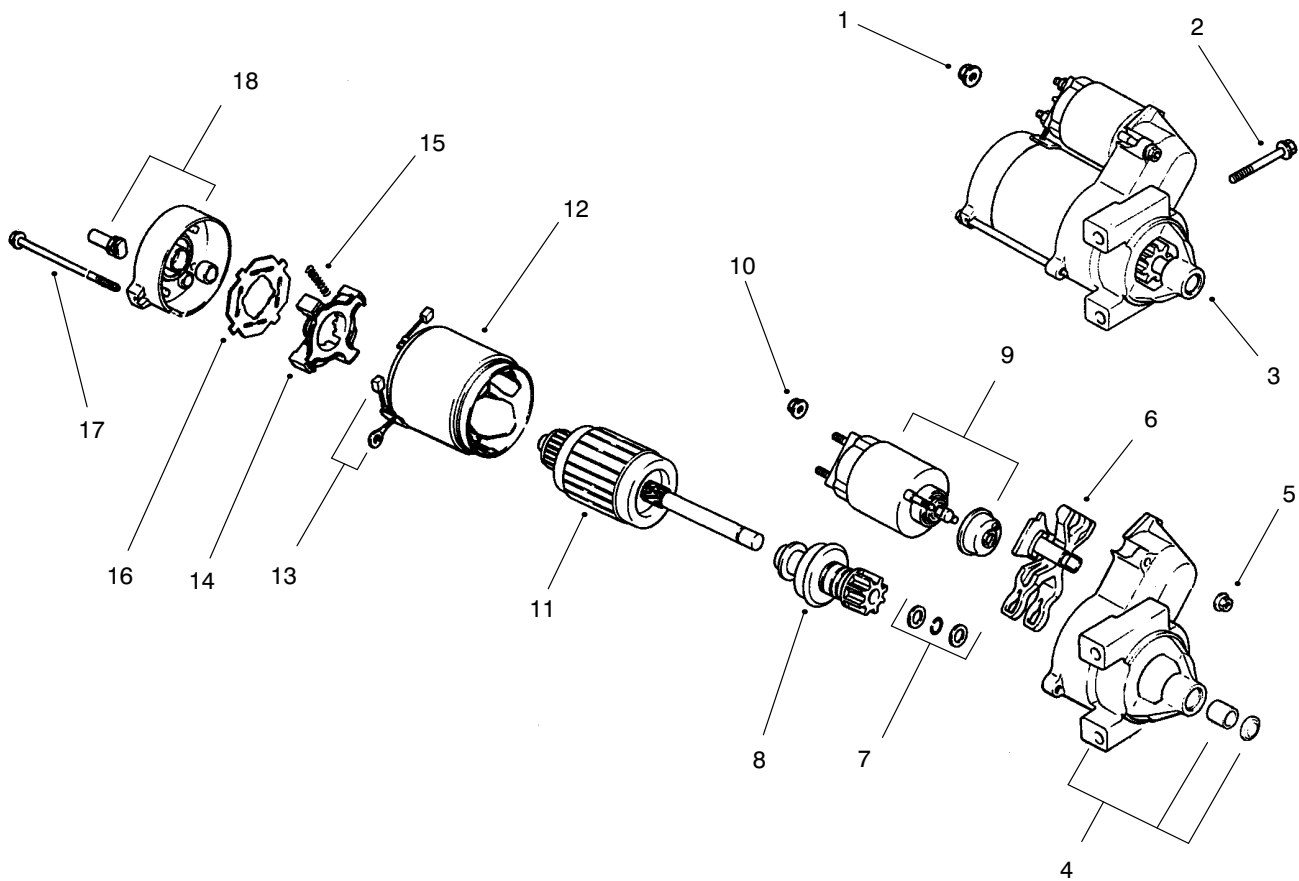


Group 6 – Blower Housing & Baffles (CH25S 68606 Kohler)

| Ref. No. | Part No. | Description | No. Used |
|----------|-----------|-----------------------------------|----------|
| 1 | 24 027 40 | Housing, blower (Includes 2-5) | 1 |
| 2 | 24 100 02 | Nut, plastic | 2 |
| 3 | 25 139 16 | Button plug | 1 |
| 4 | 25 086 43 | Screw, set | 1 |
| 5 | 24 100 01 | Nut, plastic | 2 |
| 6 | M-0551016 | Screw, hex. flange | 1 |
| 7 | M-0545016 | Screw, hex. flange | 5 |
| 8 | M-0567020 | Screw, hex. flange | 2 |
| 9 | 24 146 11 | Plate, backing – #2 side | 1 |

| Ref. No. | Part No. | Description | No. Used |
|----------|-----------|-------------------------------|----------|
| 10 | M-0645016 | Screw, hex. flange | 6 |
| 11 | 24 063 39 | Baffle, cyl. barrel – #2 side | 1 |
| 12 | 24 063 17 | Baffle, valley – #2 side | 1 |
| 13 | M-0545010 | Screw, hex. flange | 2 |
| 14 | 24 063 24 | Baffle, valley – #1 side | 1 |
| 15 | 24 063 30 | Baffle, cyl. barrel – #1 side | 1 |
| 16 | 24 146 08 | Plate, backing – #1 side | 1 |
| | | Not Illustrated | |
| | 24 113 69 | Decal, HP | 1 |

Obtain Parts From Kohler

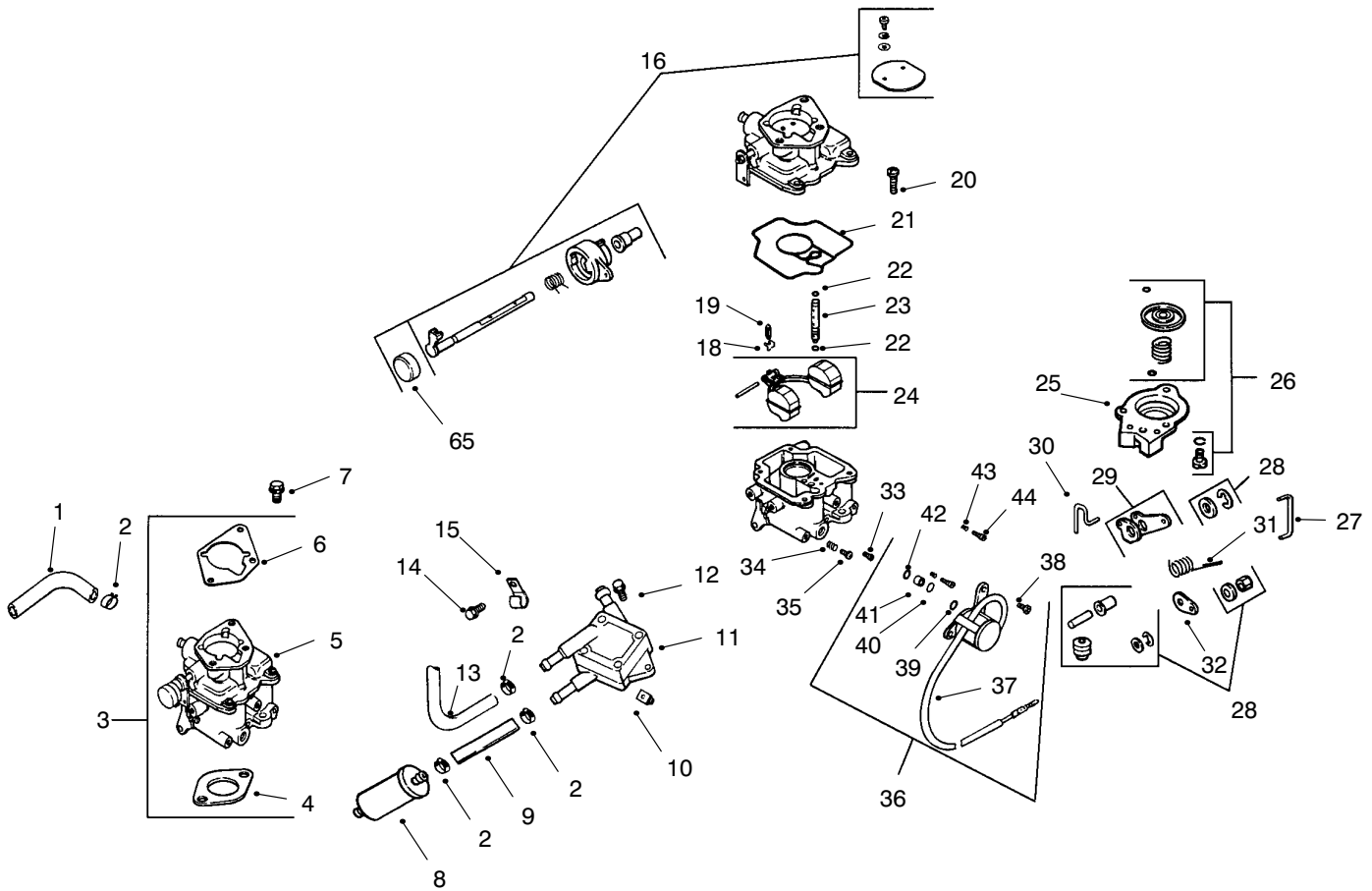


Group 7 – Starting System (CH25S 68606 Kohler)

| Ref. No. | Part No. | Description | No. Used |
|----------|-----------|---|----------|
| 1 | M-0841080 | Nut, hex flange | 1 |
| 2 | M-0839080 | Screw, hex. flange | 2 |
| 3 | 24 098 01 | Starter, solenoid shift assembly (Incl. 4-18) | 1 |
| 4 | 24 081 04 | Drive, end cap | 1 |
| 5 | 52 100 10 | Nut, starter | 2 |
| 6 | 12 090 10 | Lever, starter drive | 1 |
| 7 | 24 755 84 | Kit, starter repair | 1 |
| 8 | 12 239 01 | Drive, pinion | 1 |
| 9 | 52 435 02 | Solenoid | 1 |

| Ref. No. | Part No. | Description | No. Used |
|----------|-----------|-----------------------------------|----------|
| 10 | 52 100 09 | Nut, starter | 1 |
| 11 | 12 170 04 | Armature, starter | 1 |
| 12 | 12 471 01 | Frame | 1 |
| 13 | 52 221 01 | Kit, brush & spring (Includes 15) | 1 |
| 14 | 52 323 03 | Holder, brush | 1 |
| 15 | 52 089 09 | Spring, brush | 4 |
| 16 | 52 168 01 | Insulator | 1 |
| 17 | 52 211 05 | Bolt, thru | 2 |
| 18 | 24 301 01 | Commutator, end cap | 1 |

Obtain Parts From Kohler

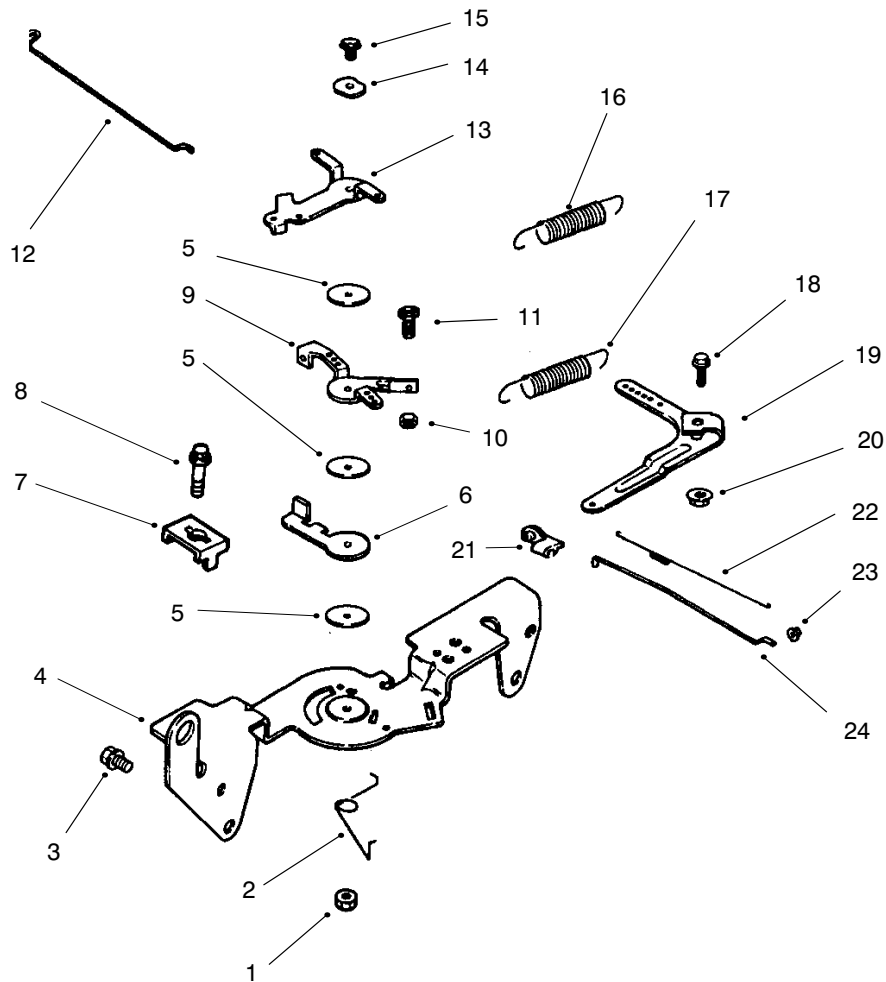


Group 8 – Fuel System (CH25S 68606 Kohler)

| Ref. No. | Part No. | Description | No. Used |
|----------|-----------|--|----------|
| 1 | 25 353 10 | Line, fuel – 9" | 2 |
| 2 | X-426-9 | Clamp, hose | 6 |
| 3 | 24 853 34 | Kit, carburetor w/gasket (Includes 4-6) | 1 |
| 4 | 24 041 06 | Gasket, air cleaner base | 1 |
| 5 | 24 053 34 | Carburetor assembly (For information only not available separately) | 1 |
| 6 | 24 041 17 | Gasket, carburetor | 1 |
| 7 | M-0651030 | Screw, hex. flange | 2 |
| 8 | 24 050 02 | Filter, fuel | 1 |
| 9 | 25 353 15 | Line, fuel | 1 |
| 10 | 24 100 01 | Nut, plastic | 2 |
| 11 | 24 393 04 | Pump, fuel-pulse | 1 |
| 12 | 24 086 12 | Screw, hex | 2 |
| 13 | 24 353 02 | Line, fuel 15-1/2" | 1 |
| 14 | M-0650012 | Screw, hex flange | 1 |
| 15 | 47 154 01 | Clip, cable | 1 |
| 18 | 24 154 01 | Clip, inlet needle valve | 1 |
| 19 | 24 462 01 | Valve, inlet needle | 1 |
| 20 | 24 086 09 | Screw, sems pan hd. | 4 |
| 21 | 24 041 09 | Gasket, carburetor body | 1 |
| 22 | 24 153 02 | O-Ring, slow jet | 1 |
| 23 | 24 337 29 | Jet, slow | 1 |
| 24 | 24 757 02 | Kit, float repair | 1 |
| 25 | 24 081 05 | Housing, pump | 1 |

| Ref. No. | Part No. | Description | No. Used |
|----------|-----------|--|----------|
| 26 | 24 757 08 | Kit repair-accelerator pump | 1 |
| 27 | 24 079 07 | Linkage, rod | 1 |
| 28 | 24 757 09 | Kit repair-accelerator pump diagram | 1 |
| 29 | 24 090 16 | Lever, rod | 1 |
| 30 | 24 079 06 | Linkage, rod | 1 |
| 31 | 24 089 27 | Spring, Linkage | 1 |
| 32 | 24 090 15 | Lever, Linkage | 1 |
| 33 | 24 337 30 | Jet, main | 1 |
| 34 | 24 086 10 | Screw, idle speed adj. | 1 |
| 35 | 24 089 10 | Spring, idle speed adj. | 1 |
| 36 | 24 757 01 | Kit, solenoid asm. (Includes 37-42) | 1 |
| 37 | 24 153 06 | O-Ring, solenoid | 1 |
| 38 | 24 521 01 | Seat, solenoid | 1 |
| 39 | 24 153 05 | O-Ring, solenoid | 1 |
| 40 | 24 153 04 | O-Ring, solenoid | 1 |
| 41 | 24 435 01 | Solenoid | 1 |
| 42 | 24 086 07 | Screw, sems pan hd. | 2 |
| 43 | 24 089 11 | Spring, idle adj. | 1 |
| 44 | 24 368 01 | Needle, idle adj.6 | 1 |
| | | Not Illustrated | |
| | 24 757 03 | Kit, carburetor repair | 1 |
| | 24 757 07 | Kit, choke repair (Includes 17) | 1 |
| | 24 173 02 | Cap, choke lever | 1 |

Obtain Parts From Kohler

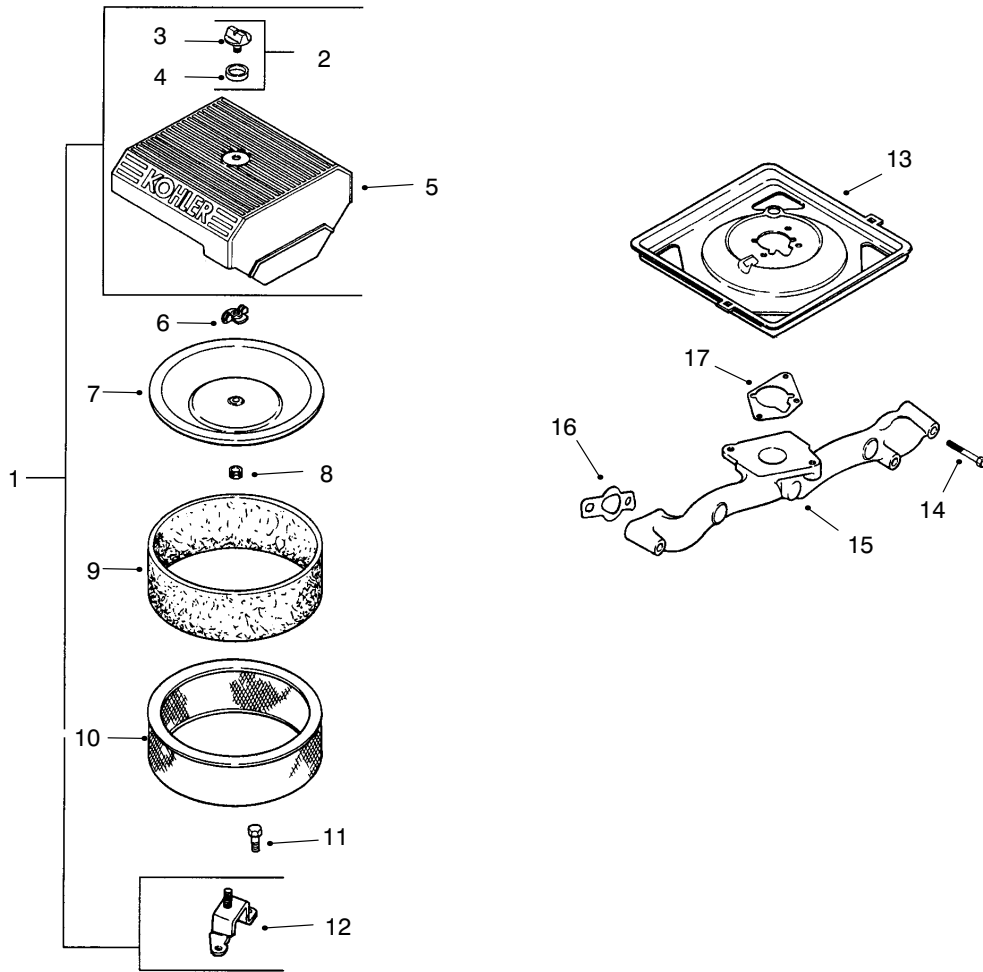


Group 9 – Engine Controls (CH25S 68606 Kohler)

| Ref. No. | Part No. | Description | No. Used |
|----------|-----------|--------------------------|----------|
| 1 | M-0547050 | Nut, hex. lock | 1 |
| 2 | 24 089 03 | Spring, choke return | 1 |
| 3 | M-0645016 | Screw, hex. flange | 4 |
| 4 | 24 126 56 | Bracket, control | 1 |
| 5 | 24 468 01 | Washer, plain | 3 |
| 6 | 24 090 07 | Lever, throttle actuator | 1 |
| 7 | 12 237 01 | Clamp, cable | 2 |
| 8 | M-0545016 | Screw, hex. flange | 2 |
| 9 | 24 090 03 | Lever, throttle control | 1 |
| 10 | M-0446030 | Nut, hex | 1 |
| 11 | M-0401030 | Screw, hex. cap | 1 |
| 12 | 24 079 02 | Linkage, choke | 1 |

| Ref. No. | Part No. | Description | No. Used |
|----------|------------|----------------------------|----------|
| 13 | 24 090 05 | Lever, choke | 1 |
| 14 | 41 468 03 | Washer, spring | 1 |
| 15 | M-0545020 | Screw, hex. flange | 1 |
| 16 | 24 089 38 | Spring, throttle limiter | 1 |
| 17 | 24 089 15 | Spring, governor | 1 |
| 18 | SM-0642025 | Screw, hex. flange | 1 |
| 19 | 24 090 14 | Lever, governor | 1 |
| 20 | M-0641060 | Nut, hex. flange | 1 |
| 21 | 25 158 11 | Bushing, linkage retaining | 1 |
| 22 | 24 089 01 | Spring, linkage | 1 |
| 23 | 25 158 08 | Bushing, linkage retaining | 1 |
| 24 | 24 079 01 | Linkage, throttle | 1 |

Obtain Parts From Kohler

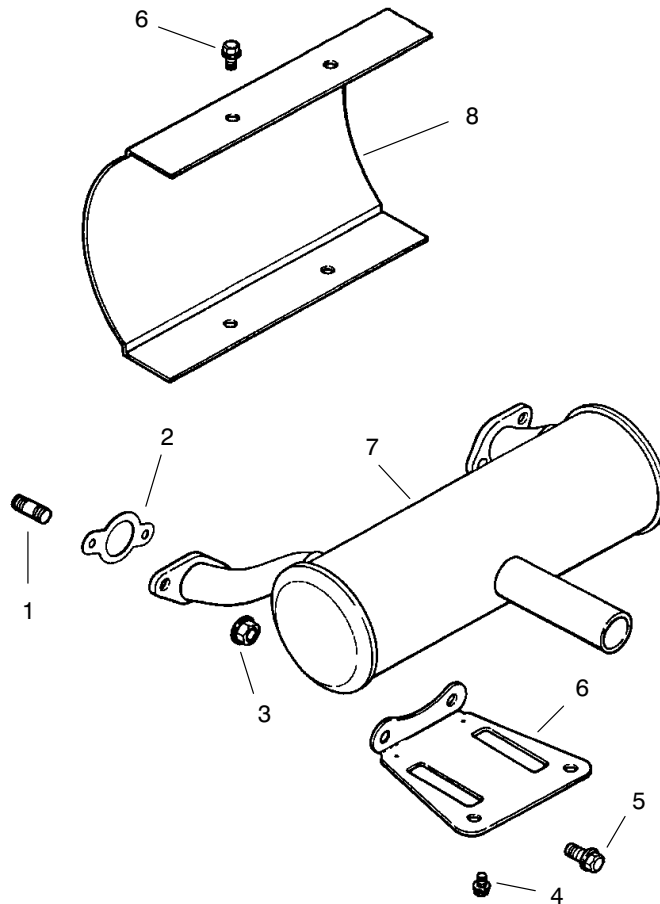


Group 10 – Air Intake/Filtration (CH25S 68606 Kohler)

| Ref. No. | Part No. | Description | No. Used |
|----------|-----------|---|----------|
| 1 | 24 753 05 | Kit, air cleaner (Includes 2-5, 12) | 1 |
| 2 | 54 755 01 | Kit, air cleaner knob (Includes 3,4) | 1 |
| 3 | 25 341 03 | Knob, cover | 1 |
| 4 | 24 153 15 | O-Ring | 1 |
| 5 | 24 096 24 | Cover, air cleaner | 1 |
| 6 | 12 100 01 | Wing Nut | 2 |
| 7 | 24 096 01 | Cover, inner air cleaner | 1 |
| 8 | 230046 | Seal, inner air cleaner | 1 |

| Ref. No. | Part No. | Description | No. Used |
|----------|-----------|---------------------------|----------|
| 9 | 24 083 05 | Precleaner, element | 1 |
| 10 | 24 083 03 | Element, air cleaner | 1 |
| 11 | M-0645016 | Screw, hex flange | 3 |
| 12 | 24 126 43 | Bracket, air cleaner base | 1 |
| 13 | 24 094 11 | Base, air cleaner | 1 |
| 14 | M-0651055 | Screw, hex flange | 4 |
| 15 | 24 164 14 | Manifold, intake | 1 |
| 16 | 24 041 01 | Gasket, intake manifold | 2 |
| 17 | 24 041 06 | Gasket, air cleaner base | 1 |

Obtain Parts From Kohler



Group 11 – Exhaust (CH25S 68606 Kohler)

| Ref. No. | Part No. | Description | No. Used | Ref. No. | Part No. | Description | No. Used |
|----------|-----------|----------------------------------|----------|----------|-----------|------------------------|----------|
| 1 | 25 072 04 | Stud | 4 | 8 | 24 314 04 | Shield, heat | 1 |
| 2 | 24 041 02 | Gasket, exhaust | 2 | | | Not Illustrated | |
| 3 | M-0841080 | Nut, hex flange | 4 | | 24 522 85 | Short Block | 1 |
| 4 | M-0650012 | Screw, hex. flange | 4 | | 24 782 01 | Miniblock | 1 |
| 5 | M-0839020 | | 2 | | 54 755 23 | Gasket Set | 1 |
| 6 | 24 126 12 | Bracket, muffler | 1 | | | | |
| 7 | 24 068 17 | Muffler Canister – Center Outlet | 1 | | | | |

Obtain Parts From Kohler

TORO PART NUMBER INDEX

| Part No. | Pg. No. | Ref. No. | Qty. | Description | Part No. | Pg. No. | Ref. No. | Qty. | Description |
|----------|---------|----------|------|-----------------------|----------|---------|----------|------|-----------------------|
| E000099 | 7 | 11:1 | 2 | Kit-Seal | E603721 | 7 | 14 | 1 | Fitting-Tee |
| E000139 | 7 | 11:3 | 2 | Kit-Bearing | E603722 | 7 | 15 | 1 | Fitting-Tee |
| E303077 | 9 | 1 | 6 | Clamp | E603735 | 6 | 5 | 2 | Bushing |
| E303105 | 6 | 1 | 2 | Yoke | E603737 | 6 | 6 | 2 | Bolt |
| E303287 | 12 | 21 | 5 | Tie-Plastic | E603805 | 11 | 10 | 1 | Pulley-Idler |
| E303327 | 1 | 23 | 12 | Washer-Lock | E603807 | 6 | 7 | 2 | Spring |
| E303327 | 6 | 2 | 4 | Washer-Lock | E603826 | 7 | 16 | 3 | Clamp-Hose |
| E303327 | 11 | 1 | 5 | Washer-Lock | E603827 | 7 | 17 | 5 | Clamp-Hose |
| E303335 | 3 | 25 | 1 | Tie-Plastic | E603841 | 8 | 51 | 2 | Pump - Hydro RH |
| E303335 | 9 | 4 | 1 | Tie-Plastic | E603903 | 6 | 9 | 4 | Spacer |
| E303335 | 10 | 2 | 1 | Tie-Plastic | E603987 | 7 | 18 | 1 | Elbow |
| E303335 | 12 | 31 | 2 | Tie-Plastic | E603988 | 7 | 19 | 1 | Elbow |
| E303435 | 9 | 24 | 4 | Washer | E603989 | 7 | 20 | 2 | Elbow |
| E303517 | 10 | 11:3 | 1 | Decal-Belt Drive | E603990 | 7 | 21 | 4 | Adapter |
| E323229 | 12 | 32 | 1 | Clip | E613235 | 10 | 1 | 4 | Washer |
| E323235 | 10 | 36 | 2 | Washer-Spring | E632187 | 3 | 14 | 1 | Frame-Seat |
| E323236 | 10 | 37 | 2 | Spacer | E632191 | 6 | 10 | 1 | Lever-Control LH |
| E373034 | 14 | 10 | 3 | Washer-Flat | E632193 | 6 | 11 | 1 | Lever-Control RH |
| E373066 | 1 | 3:6 | 1 | Decal | E632199 | 13 | 11 | 2 | Pin-Strut |
| E403124 | 11 | 2 | 1 | Elbow | E632201 | 7 | 23 | 1 | Arm-Pump Idler |
| E513006 | 7 | 3 | 1 | Filter Head | E632208 | 6 | 12 | 2 | Arm-Pump Control |
| E513011 | 3 | 15 | 8 | Nut | E632217 | 5 | 5 | 1 | Shaft-Brake |
| E513034 | 7 | 33:1 | 2 | Bearing-Pivot | E632219 | 1 | 7 | 1 | Arm-Deck Lift |
| E513034 | 11 | 14:1 | 2 | Bearing-Pivot | E632281 | 7 | 24 | 1 | Hose ASM-Low Pressure |
| E513075 | 12 | 33 | 1 | Switch-Solenoid | E632282 | 7 | 25 | 1 | Hose ASM-Low Pressure |
| E513140 | 5 | 1 | 2 | Bearing | E632285 | 7 | 26 | 1 | Hose ASM-Low Pressure |
| E513152 | 12 | 15 | 1 | Switch-Seat | E632286 | 7 | 27 | 1 | Hose ASM-Low Pressure |
| E513167 | 7 | 5 | 1 | Cap | E632324 | 1 | 5 | 1 | Lever-Lift |
| E513180 | 12 | 16 | 1 | Actuator-Switch | E632469 | 11 | 14 | 1 | Idler Arm Asm |
| E513374 | 12 | 26 | 1 | Meter-Hour | E632489 | 5 | 4 | 1 | Lever-Brake |
| E513435 | 15 | 4 | 3 | Washer-Spring | E632511 | 2 | 8 | 2 | Fork-Castor |
| E513592 | 3 | 26 | 1 | Knob | E632690 | 13 | 10 | 2 | Strut |
| E513645 | 9 | 6 | 2 | Bushing | E632712 | 5 | 6 | 1 | Brake Bracket-LH |
| E513658 | 3 | 29 | 2 | Bumper | E632713 | 5 | 7 | 1 | Brake Bracket-RH |
| E513747 | 3 | 11:2 | 1 | Decal-Warning | E632802 | 2 | 13 | 1 | Weight |
| E513748 | 10 | 11:2 | 1 | Decal-Guard | E632899 | 1 | 16 | 1 | Plate-Deck Lift |
| E513762 | 3 | 24 | 1 | Clip | E632911 | 6 | 13 | 1 | Motion Control |
| E513762 | 8 | 56 | 1 | Clip | E632912 | 6 | 14 | 1 | Motion Control |
| E513762 | 9 | 3 | 1 | Clip | E633002 | 211:1:1 | 2 | 2 | Tire |
| E513762 | 12 | 23 | 1 | Clip | E633007 | 3 | 12 | 2 | Wheel & Tire ASM |
| E513840 | 7 | 7 | 2 | Elbow | E633008 | 3 | 12:2 | 2 | Tire |
| E513890 | 7 | 2:3 | 1 | Decal-Hydraulic Tank | E633009 | 3 | 12:1 | 2 | Wheel |
| E513929 | 3 | 11:4 | 1 | Decal-Drive Release | E633023 | 9 | 9 | 6 | Stud |
| E522217 | 7 | 8 | 1 | Hose ASM-Low Pressure | E633029 | 13 | 8 | 2 | Rod End |
| E522424 | 12 | 11 | 1 | Mount-Spring | E633060 | 5 | 10 | 4 | Spacer |
| E523027 | 6 | 3 | 2 | Damper | E633062 | 5 | 11 | 4 | Spacer |
| E523103 | 7 | 9 | 1 | Gasket | E633064 | 1 | 32 | 2 | Spring-Deck Support |
| E523281 | 12 | 34 | 1 | Wire-Starter | E633068 | 1 | 12 | 2 | Arm-Deck Lift |
| E523328 | 7 | 11 | 2 | Motor-Wheel | E633080 | 1 | 18 | 1 | Bushing |
| E523415 | 12 | 10 | 1 | Spring | E633082 | 1 | 17 | 1 | Bushing |
| E523420 | 10 | 3 | 2 | Bumper | E633096 | 1 | 28 | 2 | Rod-Deck Lift |
| E523428 | 3 | 2:6 | 1 | 4" Locking Track Set | E633097 | 1 | 20 | 1 | Hitch Pin w/Lanyard |
| E543017 | 6 | 4 | 2 | Ball Joint | E633099 | 10 | 9 | 1 | Clutch |
| E543070 | 12 | 25 | 1 | Switch-Ignition | E633102 | 5 | 12 | 2 | Bearing-Side Flange |
| E543084 | 12 | 36 | 1 | Wire-Starter Solenoid | E633110 | 6 | 16 | 4 | Bearing-Side Flange |
| E543232 | 11 | 4 | 1 | Nipple | E633110 | 12 | 29 | 1 | Switch-Brake |
| E543233 | 11 | 5 | 1 | Cap | E633111 | 12 | 20 | 2 | Switch-Drive Lever |
| E543277 | 9 | 7 | 2 | Elbow | E633131 | 5 | 13 | 4 | Yoke-Brake Linkage |
| E543316 | 12 | 22 | 1 | Module-Interlock | E633144 | 5 | 14 | 2 | Pin-Trunion |
| E543391 | 12 | 5 | 1 | Insulator-Battery | E633152 | 6 | 17 | 2 | Ball Joint LH |
| E543393 | 12 | 35 | 3 | Insulator-Solenoid | E633153 | 6 | 15 | 2 | Linkage |
| E543401 | 3 | 2:5 | 4 | Spacer-Track | E633166 | 11 | 12 | 1 | Idler |
| E543407 | 3 | 2:1 | 1 | Cushion-Seat | E633167 | 7 | 31 | 1 | Pulley-Idler |
| E543456 | 9 | 8 | 2 | Line-Fuel | E633177 | 6 | 18 | 2 | Arm |
| E543511 | 2 | 7 | 2 | Seal-Grease | E633179 | 10 | 10 | 1 | Spacer |
| E543513 | 2 | 1 | 2 | Cap-Grease | E633181 | 12 | 18 | 4 | Plate |
| E543792 | 12 | 3 | 2 | Wingnut | E633257 | 6 | 19 | 2 | Grip |
| E603050 | 11 | 6 | 1 | Spacer | E633268 | 5 | 17 | 1 | Grip-Brake Lever |
| E603336 | 3 | 10 | 1 | Cable-Choke | E633273 | 3 | 15 | 8 | Wheel Bolt |
| E603384 | 7 | 12 | 1 | Bushing | E633293 | 3 | 16 | 1 | Rod-Seat Holdup |
| E603384 | 11 | 7 | 1 | Bushing | E633295 | 1 | 6 | 1 | Grip-Lift Lever |
| E603401 | 11 | 23 | 1 | Spacer-Fender | E633306 | 12 | 6 | 1 | Wire-Starter |
| E603402 | 11 | 11 | 1 | Spring | E633307 | 12 | 4 | 1 | Wire-Ground |
| E603413 | 7 | 13 | 1 | Spring-Extension | E633325 | 1 | 8 | 1 | Spring-Compression |
| E603479 | 12 | 2 | 1 | Battery | E633335 | 7 | 32 | 2 | Hose-Low Pressure |
| E603496 | 11 | 9 | 2 | Bushing | E633345 | 1 | 37 | 1 | Decal-HOC |
| E603610 | 10 | 6 | 2 | Disc-Spring | E633346 | 3 | 13:3 | 1 | Decal-Fuel Valve |

*Not Illustrated

TORO PART NUMBER INDEX (Cont.)

| Part No. | Pg. No. | Qty. | Ref. No. | Description | Part No. | Pg. No. | Qty. | Ref. No. | Description |
|----------|---------|--------|----------|----------------------|------------|---------|------|----------|-------------------------|
| E633347 | 9 | 12 | 1 | Valve-Fuel Line | E805269 | 5 | 31 | 2 | Washer |
| E633348 | 9 | 13 | 1 | Fuel Line | E806005 | 1 | 21 | 1 | Hairpin |
| E633349 | 9 | 14 | 6 | Spring-Fuel Tank | E806800 | 5 | 28 | 2 | Pin-Cotter |
| E633354 | 3 | 11:3 | 2 | Decal-Motion Control | E807020 | 5 | 16 | 2 | Key-Woodruff |
| E633396 | 10 | 34 | 1 | Clip | E807020 | 7 | 11:2 | 2 | Key-Woodruff |
| E633396 | 12 | 28 | 3 | Clip | E807272 | 8 | 46 | 2 | Key |
| E633441 | 1 | 30 | 4 | Swivel-Deck Mount | E807513 | 3 | 22 | 2 | Bolt-CARR |
| E633447 | 13 | 3 | 4 | Chain-Lift | E808280 | 6 | 33 | 2 | Pin-Clevis |
| E633454 | 5 | 2 | 2 | Spring-Brake | E808283 | 5 | 29 | 2 | Pin-Clevis |
| E633462 | 10 | 11:4 | 1 | Decal-Important | E808284 | 1 | 14 | 2 | Pin-Clevis |
| E633466 | 10 | 17 | 1 | Guard-Muffler | E808285 | 5 | 19 | 4 | Pin-Clevis |
| E633477 | 5 | 3 | 3 | Rod-Brake | E808505 | 1 | 11 | 5 | Ring-Retaining |
| E633508 | 2 | 3 | 6 | Washer-Belleville | E808514 | 5 | 30 | 2 | E Ring Retainer |
| E633543 | 10 | 5 | 1 | Strap,Clutch | E809036 | 5 | 8 | 2 | Nut |
| E633545 | 10 | 4 | 2 | Spacer-Grommet | E809036 | 7 | 11:4 | 2 | Nut |
| E633548 | 5 | 15 | 2 | Hub-Wheel | E809057 | 6 | 8 | 4 | Screw-HSH |
| E633553 | 1 | 3:2 | 3 | Pad-Anti skid | E809076 | 10 | 35 | 2 | Screw-HH |
| E633567 | 7 | 29 | 1 | Sheave | E811008 | 8 | 49 | 1 | Fitting-Grease |
| E633568 | 7 | 28 | 2 | Sheave | E811008 | 11 | 22 | 1 | Fitting-Grease |
| E633579 | 2 | 11:5 | 2 | Spacer | E811010 | 2 | 6 | 2 | Plug |
| E633580 | 2 | 11:2 | 4 | Seal-Bearing | E816001 | 12 | 19 | 2 | Fuse-20 Amp |
| E633581 | 2 | 11:4 | 4 | Spacer - Bearing | 7-0081 | 16 | 8 | 1 | Washer-Special |
| E633582 | 2 | 11:1 | 2 | Wheel & Tire ASM | 7-4150 | 15 | 20 | 2 | Washer |
| E633583 | 2 | 11:1:2 | 2 | Wheel | 13-2840 | 8 | 45 | 1 | Key |
| E633587 | 1 | 35 | 1 | Handle | 27-0870-03 | 15 | 2 | 2 | Spindle Housing ASM |
| E633613 | 10 | 20 | 2 | Bracket-Guard | 27-0920 | 15 | 18 | 2 | Shaft-Spindle |
| E633615 | 10 | 7 | 1 | Guard | 27-0950 | 15 | 17 | 3 | Spacer-Bearing |
| E633630 | 10 | 38 | 2 | Grommet | 27-0960 | 15 | 21 | 3 | Bearing ASM |
| E633651 | 12 | 37 | 2 | Bolt-Battery | 27-0990 | 15 | 3 | 3 | Blade |
| E633652 | 12 | 1 | 1 | Strap-Hold Down | 27-1160 | 16 | 16 | 1 | "v" Belt Deck |
| E633673 | 12 | 27 | 1 | Switch-PTO | 27-5970 | 15 | 22 | 3 | Spacer-Matched Set |
| E633693 | 5 | 9 | 2 | Brake Band | 29-5590-03 | 14 | 14 | 2 | Bracket-Pivot |
| E633696 | 3 | 9 | 1 | Cable | 40-6230 | 14 | 17 | 2 | Spring-Torsion |
| E633705 | 3 | 2 | 1 | Seat/Armrest ASM | 43-8480 | 14 | 1:2 | 1 | Decal-Danger |
| E633706 | 1 | 36 | 1 | Decal-HOC | 46-8530 | 15 | 16 | 3 | Bearing ASM |
| E633709 | 3 | 2:2 | 1 | Cushion-Seat Back | 51-3551 | 15 | 19 | 1 | Spindle-Shaft |
| E633710 | 3 | 2:3 | 1 | Armrest-RH | 51-3640 | 16 | 2 | 1 | Sleeve-Pivot |
| E633711 | 3 | 2:4 | 1 | Armrest-LH | 51-3650 | 16 | 10 | 1 | Spring-Extension |
| E633736 | 4 | 42 | 1 | Decal-Z255 | 54-9220 | 14 | 18:1 | 1 | Decal-Warning |
| E633737 | 1 | 3:5 | 1 | Decal-Z-Master | 55-7640-03 | 16 | 1 | 1 | Idler Arm ASM |
| E633749 | 7 | 30 | 1 | Belt | 55-7650 | 16 | 11 | 1 | Plate-Spring |
| E633750 | 7 | 6 | 1 | Filter-Hydro | 61-4160 | 15 | 15 | 3 | Spindle-52" |
| E633752 | 7 | 6 | 1 | Filter-Winter Hydro | 65-2690 | 7 | 2:2 | 1 | Decal-Hot Surface |
| E633766 | 1 | 3:3 | 1 | Decal-Service | 65-5940 | 16 | 7 | 1 | Pulley-Idler |
| E633771 | 3 | 11:5 | 1 | Decal-Pump Belt | 65-5950 | 16 | 6 | 1 | Bushing-Pulley |
| E633776 | 7 | 1 | 2 | Hose | 66-1340 | 14 | 1:4 | 1 | Decal-Discharge |
| E633777 | 7 | 22 | 2 | Hose | 66-6380 | 14 | 1:5 | 1 | Decal-Danger |
| E633786 | 7 | 10 | 4 | Elbow 90 DEG | 67-5360 | 14 | 21:1 | 1 | Decal-Danger |
| E633818 | 1 | 42 | 1 | Decal-Warning | 67-5360 | 14 | 22:1 | 1 | Decal-Danger |
| E633830 | 10 | 42 | 1 | Kohler Command Ch25 | 68-2730 | 14 | 9 | 6 | Wheel-Gage |
| E633889 | 1 | 15 | 1 | Plate-Deck Lift | 72-9361 | 15 | 24 | 3 | Cup-Anti Scalp |
| E633926 | 5 | 15:2 | 8 | Stud-Wheel | 74-0720 | 3 | 33 | 1 | Tube-Manual |
| E633964 | 3 | 1 | 1 | Stop-Park Brake | 92-5816 | 15 | 5 | 3 | Screw - Blade |
| E633980 | 5 | 15:1 | 2 | Hub | 92-5836 | 15 | 12 | 1 | Washer |
| E633988 | 10 | 8 | 1 | Spacer | 93-3101 | 9 | 5 | 2 | Gas Cap |
| E634277 | 7 | 33 | 1 | Arm ASM | 93-7340 | 3 | 34 | 1 | Decal-Toro |
| E634308 | 10 | 11 | 1 | Lift Shield ASM | 93-7818 | 14 | 1:9 | 1 | Decal-Blade Bolt Torque |
| E634662 | 2 | 11 | 2 | Caster Wheel ASM | 98-3269 | 14 | 1:7 | 1 | Decal-Made In USA |
| E634796 | 10 | 14 | 1 | Shield-LH | 98-3772 | 15 | 9 | 1 | Pulley & Hub |
| E634797 | 10 | 18 | 1 | Shield-RH | 98-3777 | 14 | 2 | 4 | Spacer-Wheel |
| E634860 | 1 | 1 | 1 | Front Frame ASM | 98-3780 | 16 | 17 | 1 | Belt - Deck |
| E634862 | 10 | 11 | 1 | Shield ASM | 98-3798 | 14 | 1:3 | 1 | Decal-Gage Wheel |
| E634927 | 5 | 15 | 2 | Wheel Hub w/Studs | 98-3799 | 14 | 1:6 | 1 | Decal-Belt Routing |
| E643119 | 12 | 30 | 1 | Harness | 98-5953 | 14 | 36 | 1 | Decal-SFS |
| E800282 | 12 | 7 | 1 | Screw | 98-5954 | 1 | 3:4 | 1 | Decal-Cover Missing |
| E800284 | 10 | 40 | 1 | Scrw | 98-5954 | 14 | 1:8 | 3 | Decal-Cover Missing |
| E800339 | 2 | 11:6 | 2 | Screw-HH | 98-5961 | 14 | 4 | 4 | Screw-HH |
| E800805 | 8 | 37 | 1 | Screw-HH | 98-5963 | 14 | 21 | 1 | Cover ASM RH |
| E800805 | 11 | 18 | 1 | Screw-HH | 98-5965 | 14 | 22 | 1 | LH Cover ASM |
| E803016 | 8 | 38 | 4 | Bolt | 98-5967 | 14 | 8 | 1 | Spacer-Wheel |
| E803022 | 6 | 24 | 2 | Screw-Set | 98-5974 | 15 | 1 | 1 | Spindle ASM Center |
| E803022 | 8 | 39 | 2 | Screw-Set | 98-5975 | 14 | 3 | 4 | Washer |
| E803028 | 12 | 17 | 8 | Screw | 98-5980 | 16 | 13 | 1 | Guide-Belt |
| E803060 | 3 | 31 | 2 | Screw | 98-5984 | 14 | 18 | 1 | Deflector ASM |
| E803071 | 9 | 23 | 4 | Screw | 99-2842 | 14 | 12 | 4 | Spacer-Wheel |
| E804269 | 2 | 11:7 | 2 | Nut-Lock | 99-3656 | 9 | 21 | 1 | Decal-Control Panel |
| E804524 | 6 | 27 | 2 | Nut | 99-4588 | 14 | 1 | 1 | Deck ASM |

*Not Illustrated

TORO PART NUMBER INDEX (Cont.)

| Part No. | Pg. No. | Ref. No. | Qty. | Description | Part No. | Pg. No. | Ref. No. | Qty. | Description |
|----------|---------|----------|------|----------------------|----------|---------|----------|------|-----------------|
| 99-4607 | 9 | 11 | 1 | Tank-RH Fuel | 3231-28 | 16 | 15 | 1 | Bolt-CARR |
| 99-4608 | 9 | 10 | 1 | Tank-LH Fuel | 3242-4 | 8 | 41 | 2 | Screw-Set |
| 99-4611 | 3 | 13:2 | 1 | Decal-Control Panel | 3242-6 | 8 | 40 | 2 | Screw-SqH Set |
| 99-4613 | 15 | 13 | 2 | Pulley & Hub | 3253-3 | 8 | 42 | 2 | Washer-Lock |
| 99-4622 | 1 | 3 | 1 | Floorpan ASM | 3253-3 | 9 | 18 | 2 | Washer-Lock |
| 99-4623 | 3 | 13 | 1 | Console ASM | 3253-4 | 9 | 19 | 4 | Washer-Lock |
| 99-4624 | 3 | 11 | 1 | Frame ASM | 3253-7 | 5 | 25 | 8 | Washer-Lock |
| 99-4625 | 7 | 2 | 1 | Hydraulic Tank ASM | 3253-8 | 13 | 6 | 2 | Washer-Lock |
| 99-4656 | 9 | 2 | 1 | Panel-Control | 3256-2 | 6 | 29 | 2 | Washer-Flat |
| 99-4940 | 9 | 22 | 1 | Shield-Control Panel | 3256-2 | 10 | 29 | 4 | Washer-Flat |
| 249-21 | 14 | 25 | 2 | Latch | 3256-2 | 12 | 8 | 2 | Washer-Flat |
| 2412-120 | 3 | 30 | 2 | Clamp-R | 3256-3 | 6 | 30 | 4 | Washer-Flat |
| 253-139 | 15 | 14 | 6 | Seal-Oil | 3256-3 | 8 | 43 | 1 | Washer-Flat |
| 254-72 | 2 | 5 | 4 | Cup-Bearing | 3256-3 | 10 | 30 | 1 | Washer-Flat |
| 254-78 | 2 | 11:3 | 4 | Cone-Bearing | 3256-4 | 5 | 26 | 4 | Washer-Flat |
| 254-79 | 2 | 11:1:3 | 4 | Cup-Bearing | 3256-4 | 8 | 44 | 1 | Washer-Flat |
| 254-94 | 2 | 4 | 4 | Cone-Bearing | 3256-4 | 11 | 24 | 1 | Washer-Flat |
| 302-2 | 15 | 10 | 3 | Fitting-Grease | 3256-7 | 1 | 31 | 2 | Washer-Flat |
| 302-19 | 5 | 21 | 2 | Fitting-Grease | 3256-7 | 1 | 34 | 2 | Washer-Flat |
| 302-19 | 13 | 4 | 2 | Fitting-Grease | 3256-23 | 4 | 44 | 6 | Washer-Flat |
| 320-19 | 1 | 2 | 5 | Fitting-Grease | 3256-23 | 6 | 31 | 4 | Washer-Flat |
| 321-1 | 14 | 5 | 6 | Capscrew | 3256-23 | 9 | 20 | 10 | Washer-Flat |
| 321-3 | 8 | 50 | 2 | Screw-HH | 3256-24 | 1 | 9 | 3 | Washer-Flat |
| 321-3 | 9 | 15 | 2 | Screw-HH | 3256-24 | 11 | 20 | 4 | Washer-Flat |
| 321-4 | 3 | 27 | 1 | Screw-HH | 3256-24 | 15 | 8 | A/R | Washer-Flat |
| 321-4 | 7 | 34 | 2 | Screw-HH | 3256-24 | 16 | 3 | 3 | Washer-Flat |
| 321-4 | 10 | 22 | 10 | Screw-HH | 3256-29 | 1 | 27 | 4 | Washer-Flat |
| 321-4 | 12 | 12 | 8 | Screw-HH | 3272-5 | 6 | 32 | 2 | Pin-Cotter |
| 321-6 | 12 | 24 | 1 | Screw-HH | 3272-10 | 1 | 13 | 2 | Pin-Cotter |
| 322-3 | 3 | 4 | 8 | Screw-HH | 3272-10 | 5 | 27 | 7 | Pin-Cotter |
| 322-3 | 9 | 16 | 4 | Screw-HH | 3290-321 | 14 | 26 | 4 | Screw-HH |
| 322-3 | 13 | 12 | 2 | Screw-HH | 3290-357 | 1 | 24 | 17 | Nut-Lock Flange |
| 322-5 | 3 | 17 | 1 | Screw-HH | 3290-357 | 5 | 24 | 4 | Nut-Lock Flange |
| 322-6 | 6 | 20 | 4 | Screw-HH | 3290-357 | 6 | 35 | 8 | Nut-Lock Flange |
| 322-6 | 10 | 39 | 1 | Screw-HH | 3290-357 | 8 | 47 | 8 | Nut-Lock Flange |
| 323-4 | 5 | 18 | 4 | Screw-HH | 3290-357 | 10 | 32 | 4 | Nut-Lock Flange |
| 323-4 | 6 | 21 | 8 | Screw-HH | 3290-357 | 11 | 21 | 10 | Nut-Lock Flange |
| 323-6 | 1 | 25 | 3 | Screw-HH | 3290-357 | 14 | 11 | 7 | Nut-Lock |
| 323-6 | 3 | 5 | 2 | Screw-HH | 3296-5 | 14 | 20 | 2 | Nut-Lock |
| 323-6 | 6 | 22 | 4 | Screw-HH | 3296-5 | 16 | 9 | 1 | Nut-Lock |
| 323-6 | 10 | 24 | 6 | Screw-HH | 3296-29 | 9 | 17 | 6 | Nut-Lock |
| 323-7 | 1 | 26 | 12 | Screw-HH | 3296-29 | 10 | 41 | 1 | Nut-Lock |
| 323-8 | 7 | 35 | 1 | Screw-HH | 32128-17 | 14 | 24 | 4 | Nut-Lock |
| 323-9 | 1 | 22 | 2 | Screw-HH | 32128-20 | 3 | 23 | 12 | Nut-Lock |
| 323-9 | 6 | 23 | 6 | Screw-HH | 32128-20 | 6 | 34 | 4 | Nut-Lock |
| 323-9 | 8 | 36 | 1 | Screw-HH | 32128-20 | 10 | 31 | 1 | Nut-Lock |
| 323-9 | 11 | 16 | 5 | Screw-HH | 32128-20 | 12 | 9 | 2 | Nut-Lock |
| 323-11 | 11 | 15 | 2 | Screw | 32128-20 | 13 | 13 | 2 | Nut-Lock |
| 323-11 | 16 | 4 | 1 | Screw | 32128-21 | 15 | 7 | 16 | Nut-HHF |
| 323-13 | 1 | 19 | 1 | Screw-HH | 32128-21 | 16 | 14 | 3 | Nut-HHF |
| 323-13 | 11 | 17 | 1 | Screw-HH | 32128-33 | 3 | 28 | 1 | Nut-Hex Flange |
| 323-21 | 3 | 18 | 2 | Screw-HH | 32128-33 | 6 | 36 | 4 | Nut-Hex Flange |
| 323-28 | 14 | 7 | 1 | Screw-HH | 32128-33 | 8 | 48 | 2 | Nut-Hex Flange |
| 324-6 | 13 | 2 | 8 | Screw-HH | 32128-33 | 10 | 33 | 7 | Nut-Hex Flange |
| 325-20 | 5 | 20 | 8 | Screw-HH | 32128-33 | 12 | 13 | 11 | Nut-Hex Flange |
| 327-11 | 13 | 7 | 2 | Screw-HH | 32128-33 | 14 | 6 | 6 | Nut-Hex Flange |
| 3211-8 | 16 | 5 | 1 | Screw-HH | 32128-37 | 13 | 1 | 16 | Nut-Lock |
| 3211-15 | 14 | 19 | 2 | Screw-HH | 32144-70 | 2 | 14 | 4 | Screw-Tap |
| 3212-10 | 10 | 25 | 1 | Screw | 32146-2 | 1 | 10 | 7 | Nut-Hex Lock |
| 3217-9 | 5 | 22 | 8 | Nut-HH | 32146-2 | 3 | 21 | 4 | Nut-Hex Lock |
| 3217-11 | 1 | 29 | 8 | Nut | 32146-2 | 6 | 25 | 6 | Nut-Hex Lock |
| 3217-11 | 13 | 5 | 2 | Nut | 32146-2 | 11 | 19 | 1 | Nut-Hex Lock |
| 3218-6 | 1 | 33 | 4 | Nut-Hex Jam | 32146-4 | 3 | 20 | 2 | Nut-Lock |
| 3219-2 | 6 | 26 | 10 | Nut | 32146-14 | 2 | 2 | 2 | Nut-Lock |
| 3219-3 | 5 | 23 | 8 | Nut-Hex | 32146-17 | 10 | 27 | 4 | Nut-Lock |
| 3219-6 | 13 | 9 | 2 | Nut-Hex | 32146-18 | 3 | 19 | 2 | Nut-Lock |
| 3220-2 | 6 | 28 | 2 | Nut-Jam | 32146-20 | 15 | 11 | 3 | Nut-Lock |
| 3230-18 | 14 | 15 | 4 | Screw-CARR | 32152-1 | 14 | 16 | 4 | Nut-Lock |
| 3231-22 | 15 | 6 | 16 | Bolt-CARR | | | | | |
| 3231-22 | 16 | 12 | 1 | Bolt-CARR | | | | | |

*Not Illustrated