



Count on it.

Parts Catalog

Rear Roller Brush Kit

**Reelmaster® 5210/5410 Series Cutting Unit
with 5in Reel**

Model No. 03668

Ordering Replacement Parts

To order replacement parts, please supply the part number, the quantity, and the description of each part desired.

Understanding Reference Numbers

Each identified part in an illustration has a reference number. The reference number for a part also appears in the parts list, along with other information about the part.

This catalog uses two special reference number formats, one to indicate parts in a service assembly and another to indicate the quantity of a given part in an illustration.

Service Assembly Reference Numbers

Parts in service assemblies have reference numbers in the form a:b. The a represents the reference number of the entire service assembly and the b represents a sequential number unique to each part within the service assembly.

For example, a wheel assembly might be identified by reference number 6, the tire by 6:1, the valve by 6:2, and the wheel by 6:3. When you order the assembly identified by reference number 6, you receive all parts identified by reference numbers 6:1, 6:2, and 6:3. However, you may also order any part individually. Reference numbers of this type appear in illustration and in parts lists.

Reference Numbers Indicating Quantity

In an illustration, if a reference number indicates more than one part, the reference number has the form nX y. The n represents the quantity of the part, the X is the multiplication symbol, and the y represents the reference number.

For example, in an illustration, the reference number 2X 37 means that two of the parts identified by reference number 37 are indicated.

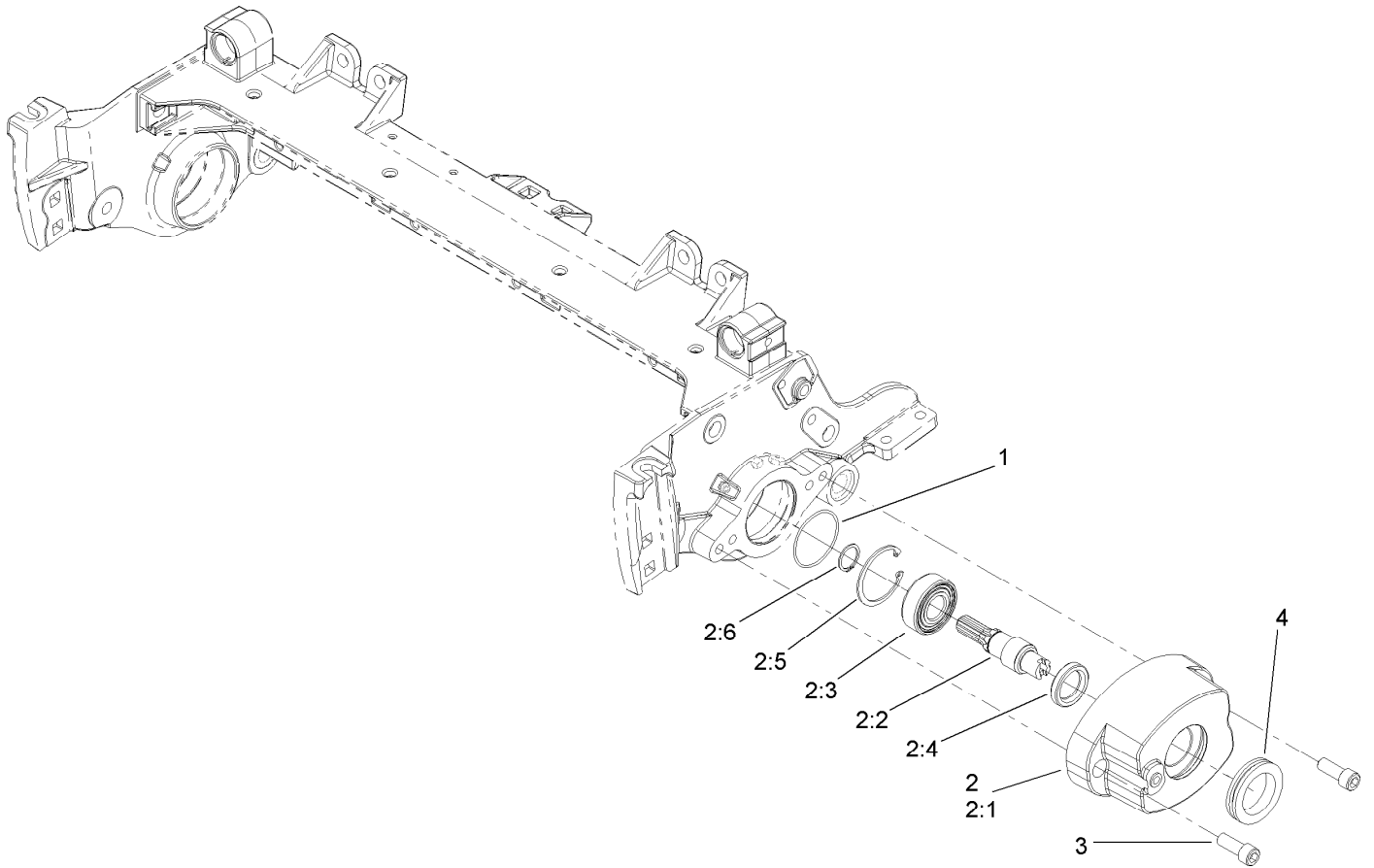
Contents

Drive Assembly 4

Roller Brush Assembly 5

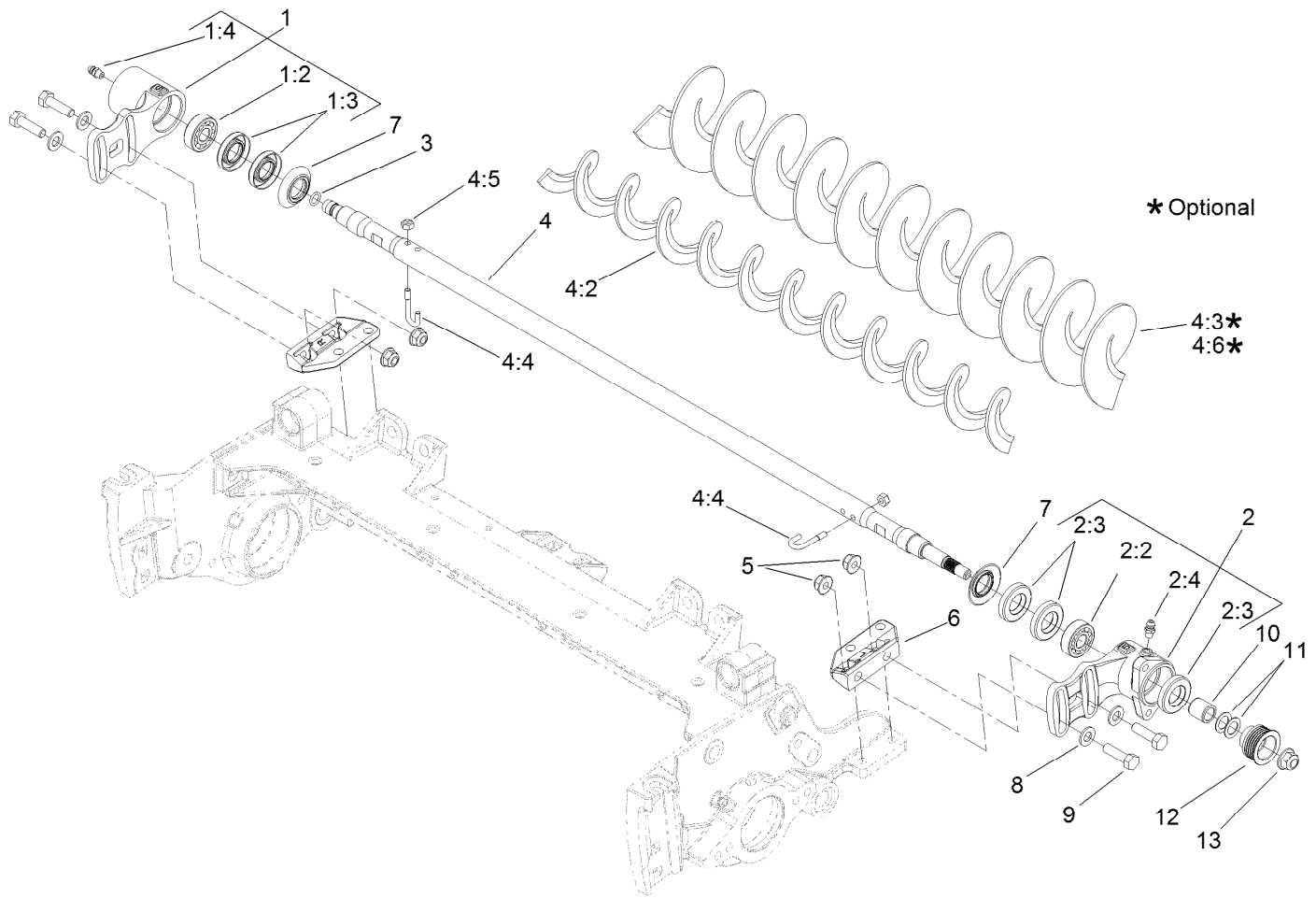
Groomer Bearing and Seal Assembly No. 110-4086 6

Drive Assembly 7



Drive Assembly

<i>Ref.</i>	<i>Part Number</i>	<i>Qty.</i>	<i>Description</i>
1	112-6968	1	O-Ring
2	108-4200	1	Bearing Housing ASM
2:1	108-4197	1	Housing-Bearing, Drive
2:2	107-7796	1	Shaft-Drive
2:3	93-2559	1	Bearing-Ball
2:4	107-7795	1	Seal-Grease
2:5	32120-62	1	Ring-Retaining
2:6	32120-72	1	Ring-Snap
3	3274-7	2	Screw-HSH
4	240-7	1	Grommet-Rubber



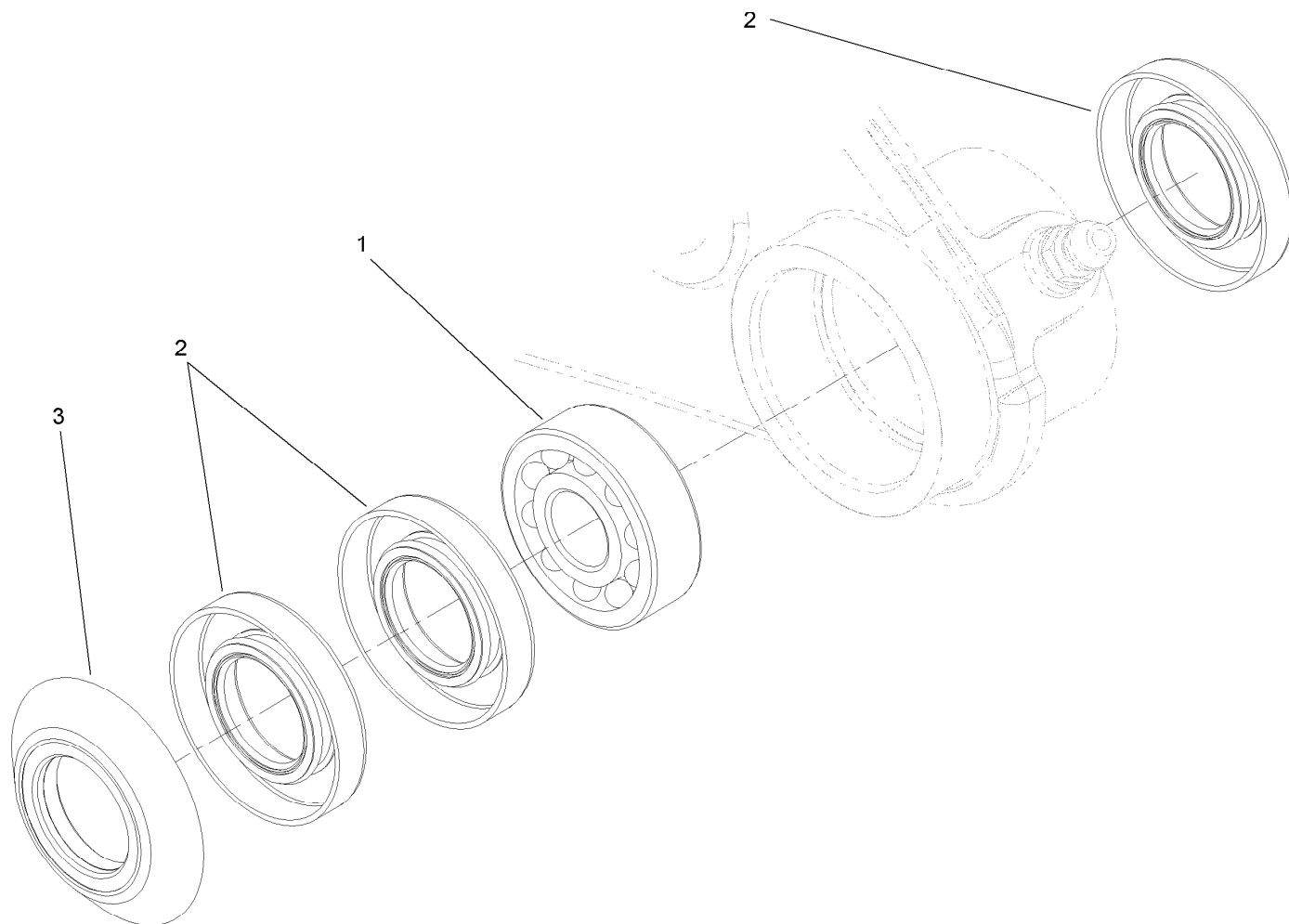
Roller Brush Assembly

Ref.	Part Number	Qty.	Description
1	108-4207	1	Housing-Bearing, Non Driven
1:2	95-0707	1	Bearing-Aligning, Self
1:3	106-8530	2	Seal-Grease
1:4	302-5	1	Fitting-Grease
2	108-4206	1	Housing-Bearing, Driven
2:2	95-0707	1	Bearing-Aligning, Self
2:3	106-8530	3	Seal-Grease
2:4	302-5	1	Fitting-Grease
3	107-8844	1	O-Ring
4	112-6966	1	Roller Brush ASM
4:2	108-4193	1	Brush-Roller
4:3	110-1740	1	Brush-Roller, High HOC ■
4:4	105-9632	2	Bolt-J

Ref.	Part Number	Qty.	Description
4:5	3296-2	2	Nut-Lock, NI
4:6	137-0842	1	HD Brush-Rear Roller, 22In ■
5	104-8300	4	Nut-HF, NI
6	108-4480	2	Bracket-Mounting
7	108-4172	2	Seal-Excluder
8	94-6936	4	Washer-Hardened
9	322-16	4	Screw-HH
10	108-4491	1	Spacer
11	112-6957	2	Washer-Hardened
12	115-0821	1	Pulley-Driven, RRB (5-Rib)
13	104-8301	1	Nut-HF, NI
50	110-4086	1	Groomer/RRB Bearing And Seal Kit ■●

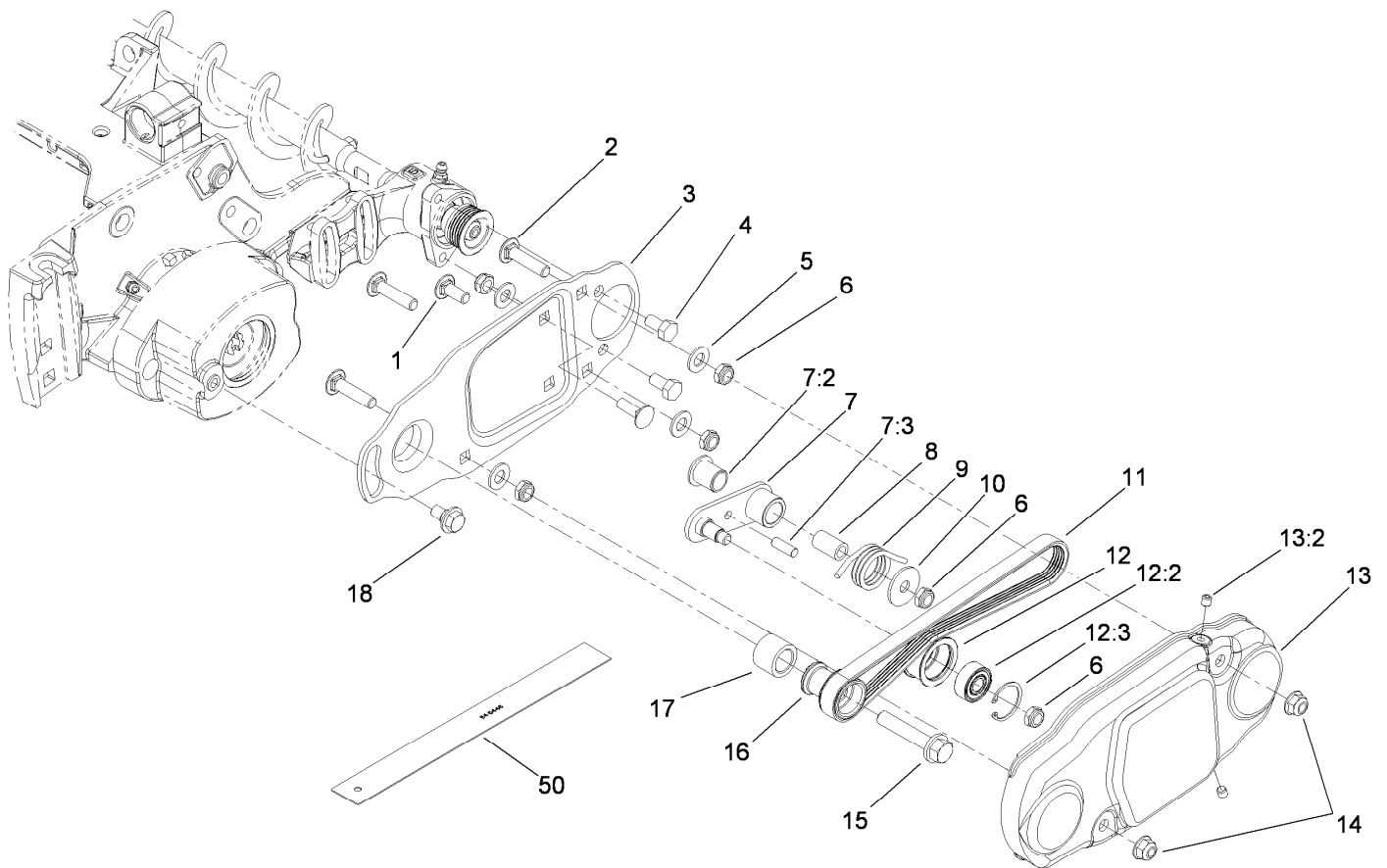
● Not illustrated

■ Optional Equipment



Groomer Bearing and Seal Assembly No. 110-4086

<i>Ref.</i>	<i>Part Number</i>	<i>Qty.</i>	<i>Description</i>
1	95-0707	1	Bearing-Aligning, Self
2	106-8530	3	Seal-Grease
3	108-4172	1	Seal-Excluder



Drive Assembly

Ref.	Part Number	Qty.	Description
1	3230-23	2	Screw-CARR
2	112-6950	3	Screw-CARR
3	115-0896-03	1	Plate-Brush, 5 Inch
4	322-2	2	Screw-HH
5	3256-45	4	Washer-Flat
6	3296-47	6	Nut-Lock, NI
7	115-0834	1	Idler Arm ASM
7:2	256-155	1	Bushing-Flange
7:3	114-9399	1	Dowel Pin
8	115-0826	1	Spacer-Idler
9	115-0839	1	Spring-Idler
10	5-1350	1	Washer
11	115-0894	1	Belt-Brush, 5 Inch (5-Rib)
12	114-9397	1	Idler Pulley ASM
12:2	110-1701	1	Bearing
12:3	32151-60	1	Ring-Snap
13	115-0898	1	Brush Cover ASM
13:2	108-0989	2	Screw-Set
14	104-8300	2	Nut-HF, NI
15	66-9302	1	Screw-HHF, Whiz
16	115-0899	1	Pulley-Driver, 5 Inch
17	108-4477	1	Spacer
18	27-0411	1	Screw-Shoulder
50	114-5446	1	Tool-Alignment ●

● Optional Equipment



Count on it.