

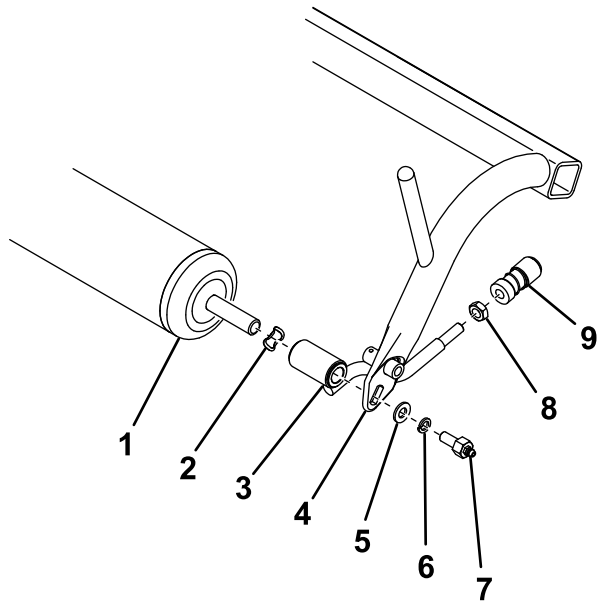
TORO®**Groomer Pull Link Kit****for Serial Number 401499999 and Before Greensmaster® 3120 or 3150 Series Traction Units**

Model No. 106-2643

Installation Instructions**⚠ WARNING****CALIFORNIA
Proposition 65 Warning****This product contains a chemical or chemicals known to the State of California to cause cancer, birth defects, or reproductive harm.**

Determine the left and right sides of the machine from the normal operating position.

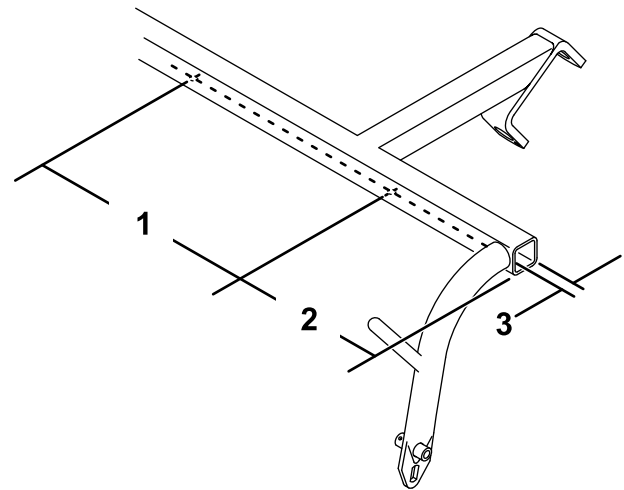
1. Park the machine on a level surface, lower the cutting units, shut off the engine, set the parking brake, remove the ignition key, and disconnect the spark plug.
2. Remove the roller, spring washers, pull link assemblies, flat washers, lockwashers, and grease screws from the pull frame (Figure 1).

**Figure 1**

- | | |
|-----------------------|------------------------|
| 1. Roller | 6. Lock washer |
| 2. Spring washer | 7. Grease screw |
| 3. Pull link assembly | 8. Jam nut |
| 4. Pull frame | 9. Ball joint receiver |
| 5. Flat washer | |

of the previously removed hardware except the roller and ball joint receivers.

4. If the pull frame does not have 2 holes in the underside, drill them at the location shown in Figure 2 using a 0.221 inch drill bit.

**Figure 2**

- | | |
|-----------------------------|----------------------|
| 1. 49.4 cm (19-7/16 inches) | 3. 1.9 cm (3/4 inch) |
| 2. 8.8 cm (3-1/2 inches) | |

5. Secure 2 bumpers to the underside of the pull frame using 2 self tapping screws (Figure 3).

3. Remove and retain the ball joint receivers from the pull link assemblies (Figure 1). Discard all



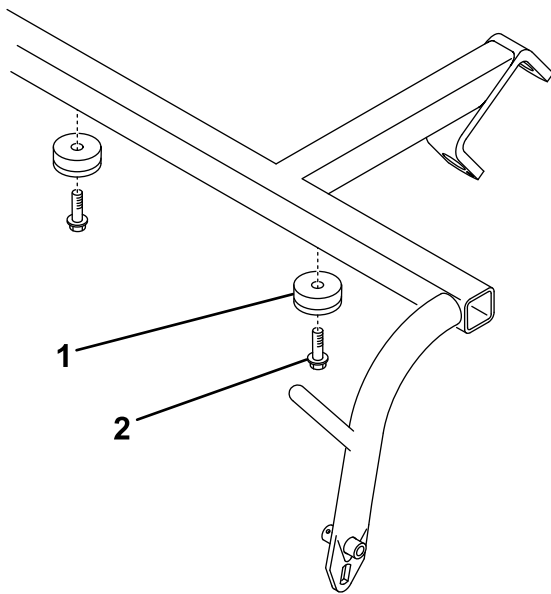


Figure 3

g245920

1. Bumper
2. Self tapping screw

6. Slide a frame spacer onto each end of the roller (Figure 4).

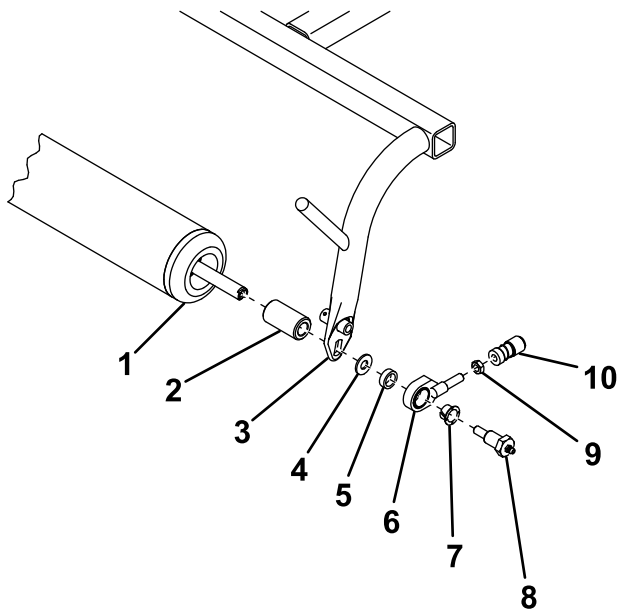


Figure 4

g245921

1. Roller
2. Frame spacer
3. Pull frame
4. Flat washer
5. Pull link spacer
6. Pull link assembly
7. Flange bushing
8. Grease screw
9. Jam nut
10. Ball joint receiver

7. Secure the roller to the pull frame as shown in Figure 4.
8. Thread a jam nut and the previously removed ball joint receiver onto the pull link assembly

(Figure 4). Do not tighten the jam nut at this time.

9. Adjust the ball joint receiver so that the distance between the grease screw and the opening in the ball joint receiver is 9.1 cm (3.6 inches) and tighten the jam nut to secure it in place (Figure 5).

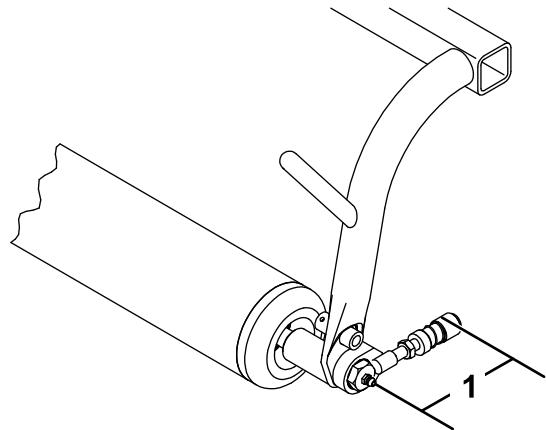


Figure 5

g245942

1. 9.1 cm (3.6 inches)

10. Thread a ball stud onto each end of the groomer front rollers (Figure 6).

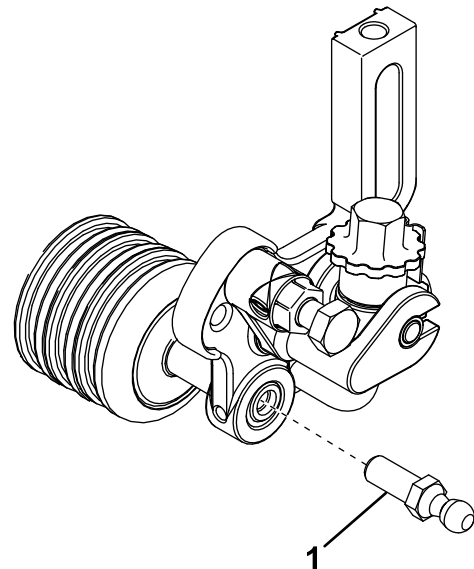


Figure 6

g245963

11. Slide the sleeve on the ball joint receivers back and hook them onto the groomer ball studs.