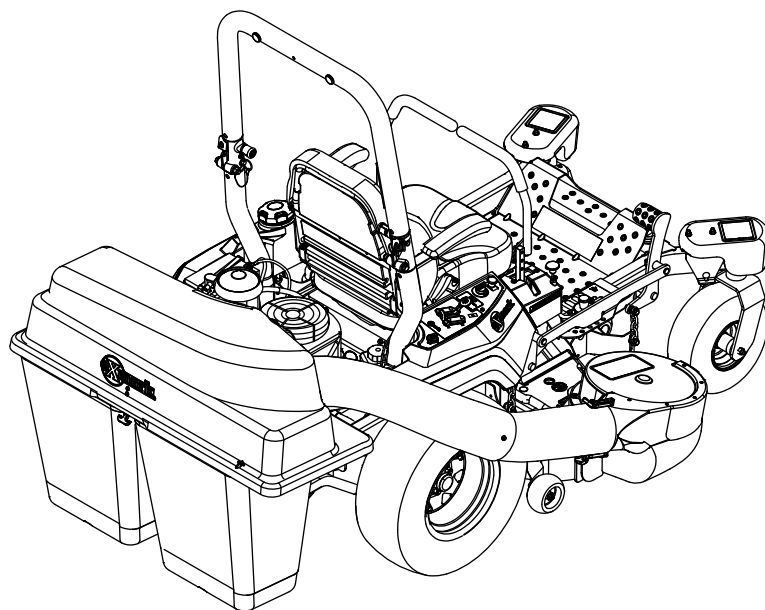




135-2604

Model No. 135-2604—Serial No. 402082300 and Up

Picture below may not reflect actual product.



Parts Manual

Ordering Replacement Parts

To order replacement parts, please supply the part number, the quantity, and the description of each part desired.

Understanding Reference Numbers

Each identified part in an illustration has a reference number. The reference number for a part also appears in the parts list, along with other information about the part.

This catalog uses two special reference number formats, one to indicate parts in a service assembly and another to indicate the quantity of a given part in an illustration.

Service Assembly Reference Numbers

Parts in service assemblies have reference numbers in the form a:b. The a represents the reference number of the entire service assembly and the b represents a sequential number unique to each part within the service assembly.

For example, a wheel assembly might be identified by reference number 6, the tire by 6:1, the valve by 6:2, and the wheel by 6:3. When you order the assembly identified by reference number 6, you receive all parts identified by reference numbers 6:1, 6:2, and 6:3. However, you may also order any part individually. Reference numbers of this type appear in illustration and in parts lists.

Reference Numbers Indicating Quantity

In an illustration, if a reference number indicates more than one part, the reference number has the form nX y. The n represents the quantity of the part, the X is the multiplication symbol, and the y represents the reference number.

For example, in an illustration, the reference number 2X 37 means that two of the parts identified by reference number 37 are indicated.

Touch Up Paint

Exmark black touch up spray paint – gloss black.

Exmark red touch up paint (spray paint – P/N 1-850337 - .6 oz liquid bottle – P/N 103-9140).

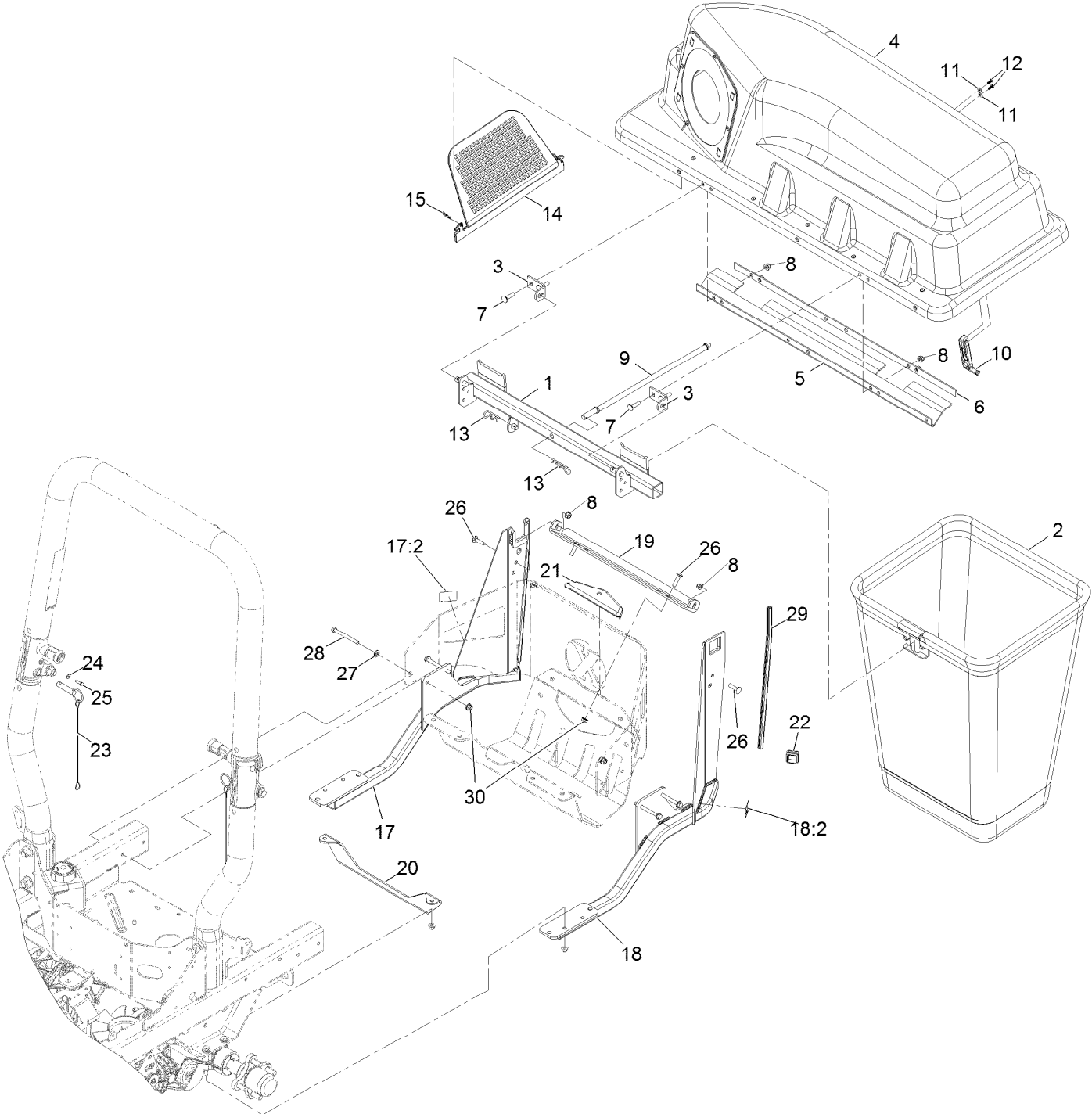


If your Exmark dealer does not have the Exmark part in stock, Exmark will get the parts to the dealer the next business day or the part will be FREE Guaranteed!! (Some restrictions apply. See your participating Exmark Dealer for details.)

Contents

Bagger Top and Mounting Assembly	4
Bag Assembly No. 116-0754	6
Hood Assembly	8
Caster Weight Assembly	10
Caster Weight Kit No. 126-8639	12
Blower Assembly	14
Blower Assembly (cont.)	16
Completing Kit No. 135-3911	18
Completing Kit No. 135-3912	20
Completing Kit No. 135-3913	22
Completing Kit No. 135-5214	24
Completing Kit No. 135-5215	26
Completing Kit No. 135-5216	28

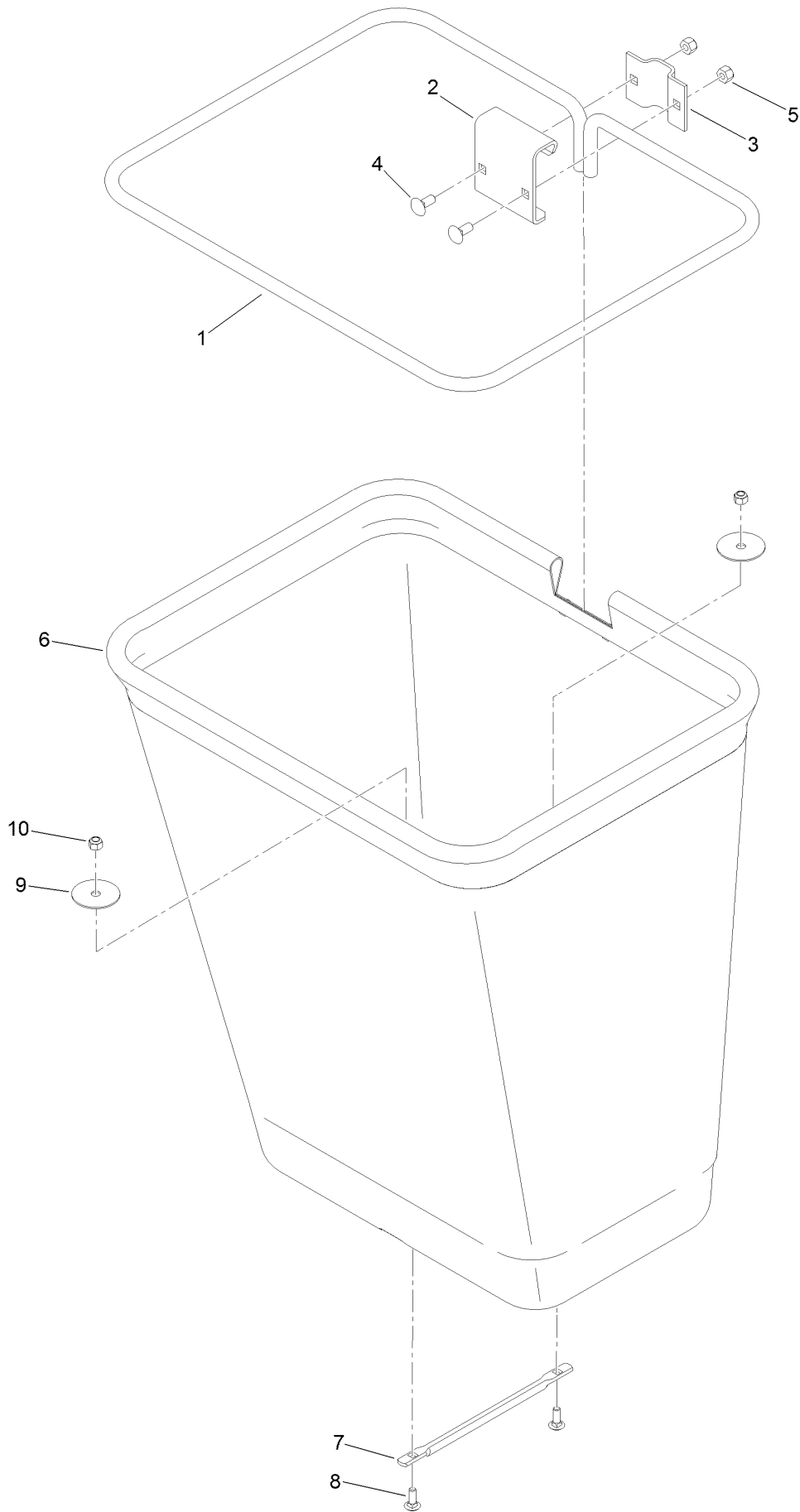
Bagger Top and Mounting Assembly



Bagger Top and Mounting Assembly (continued)

<i>Ref.</i>	<i>Part Number</i>	<i>Qty.</i>	<i>Description</i>	<i>Ref.</i>	<i>Part Number</i>	<i>Qty.</i>	<i>Description</i>
1	116-4783-03	1	Frame Pivot ASM	17	126-9662	1	RH Bagger Support ASM
2	116-0754	2	Bag And Frame ASM	17:2	106-5517	1	Decal-Warning
3	112-3987	2	Bracket-Pivot, Hopper	18	126-9663	1	LH Bagger Support ASM
4	116-4537	1	Bagger Hood ASM	18:2	106-5517	1	Decal-Warning
5	116-4126	1	Seal	19	126-7612-03	1	Angle-Support
6	116-4127-03	1	Plate-Backing	20	126-5672-03	1	Support-Transmission
7	3230-3	4	Bolt-Carriage 5/16-18 X 1 1/4	21	126-8299	1	Cover-Hitch
8	104-8300	4	Nut-Nyloc 5/16-18 Flg	22	126-9159	2	Plug
9	116-6491	1	Rod-Hold Down, Hood	23	106-9951	2	Hitch Pin ASM
10	116-4992	1	Latch-Rubber	24	3256-14	2	Washer-#10 Std
11	3256-77	2	Washer-Flat	25	32104-4	2	Screw
12	107-7461	2	Screw-Plastite	26	3230-29	4	Screw-CARR
13	3290-355	2	Pin-Hair	27	3256-23	4	Washer-5/16 SAE
14	112-3993	1	Screen-Bagger	28	126-8742	4	Screw-HH
15	3290-307	2	Pin-Cotter	29	126-9923	2	Strip-Trim
				30	104-8300	8	Nut-Nyloc 5/16-18 Flg

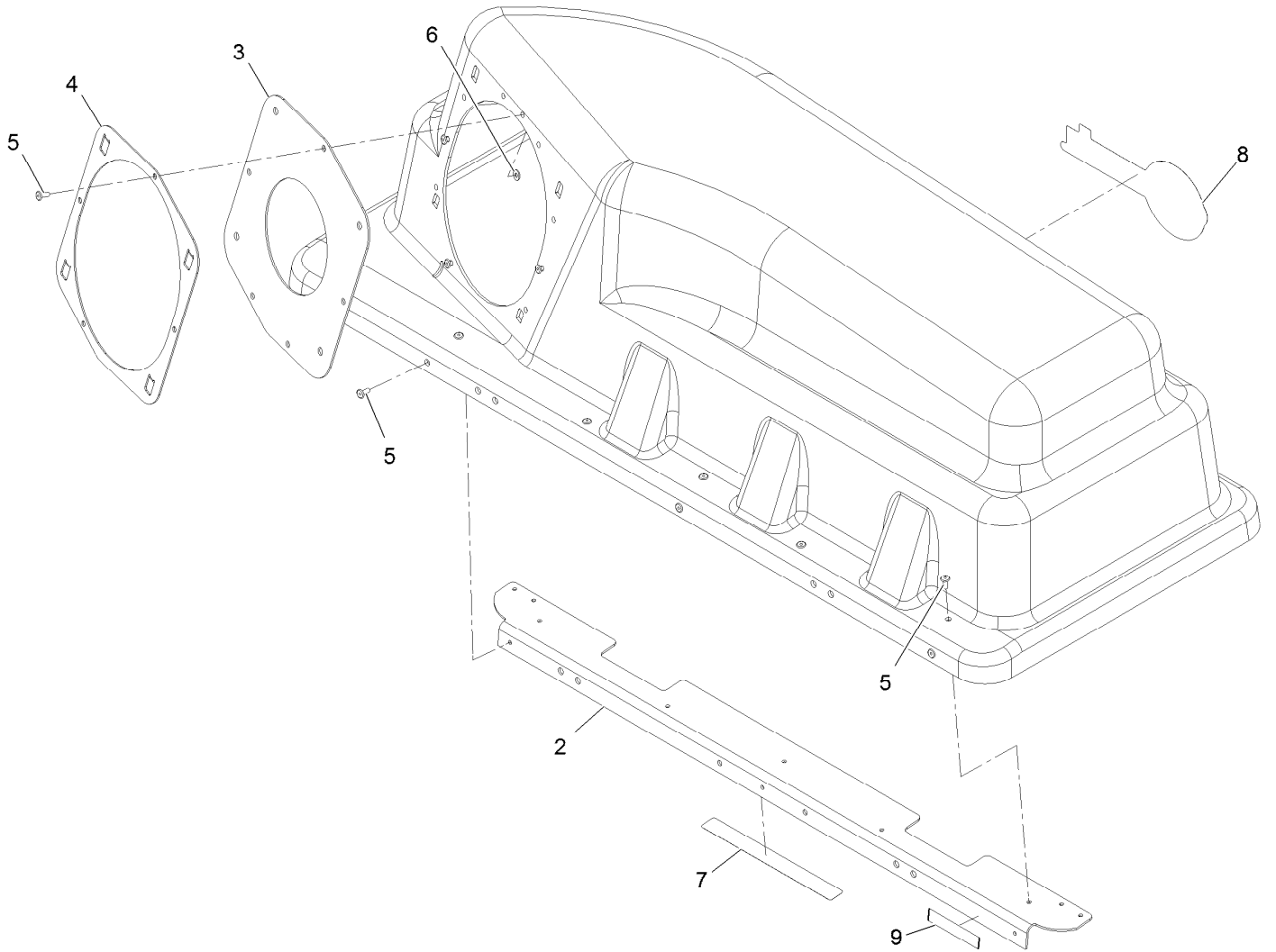
Bag Assembly No. 116-0754



Bag Assembly No. 116-0754 (continued)

<i>Ref.</i>	<i>Part Number</i>	<i>Qty.</i>	<i>Description</i>	<i>Ref.</i>	<i>Part Number</i>	<i>Qty.</i>	<i>Description</i>
1	1-653529-03	1	Frame-Bag	6	116-0757	1	Bag ASM
2	114973-03	1	Hanger-Bag	7	1-653566	1	Handle-Bag
3	114974-03	1	Clamp	8	3229-1	2	Bolt-CARR
4	3230-1	2	Bolt-CARR	9	1-653036	2	Washer
5	3296-29	2	Nut-Lock, NI	10	3296-42	2	Nut-Lock, NI

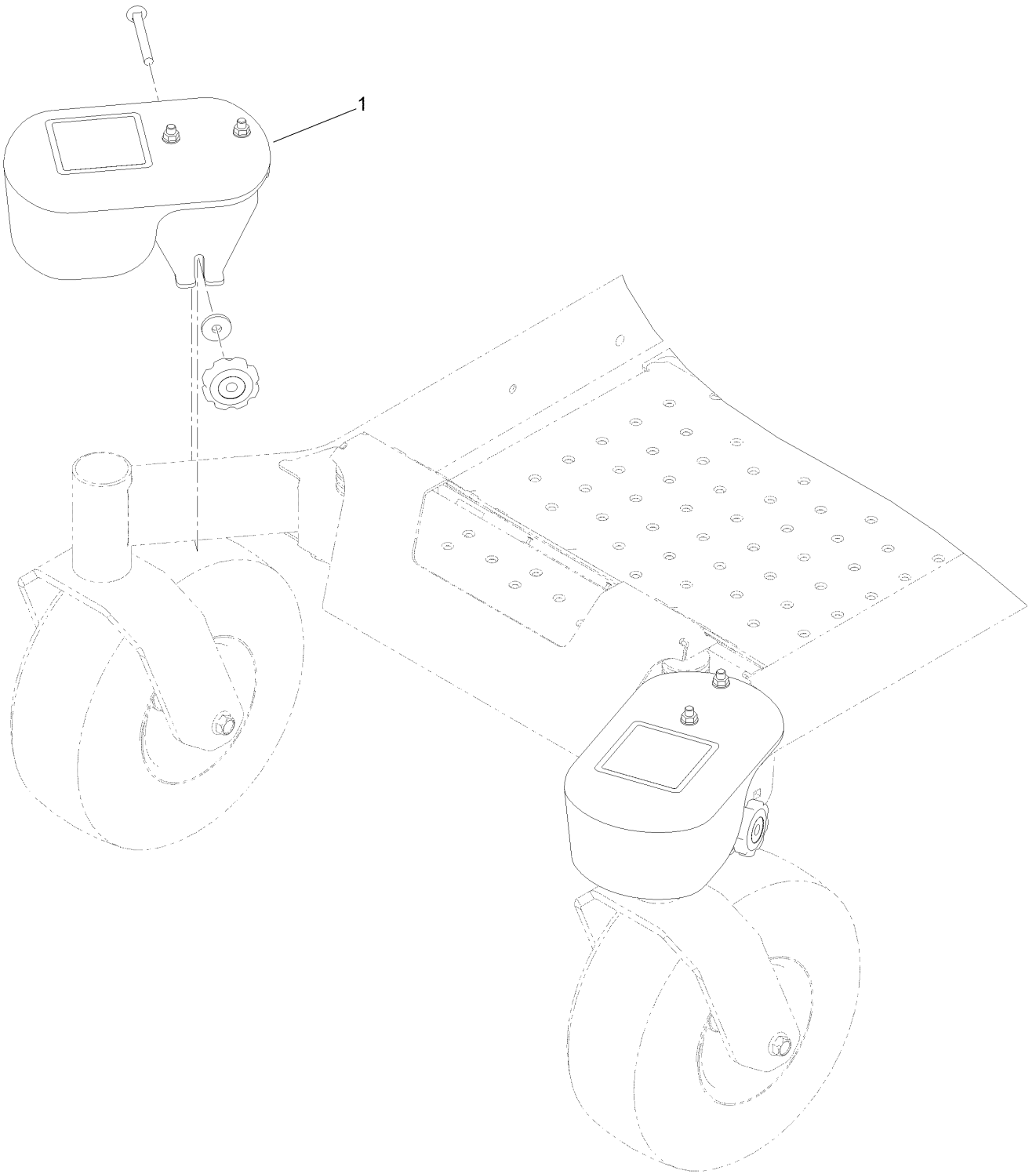
Hood Assembly



Hood Assembly (continued)

<i>Ref.</i>	<i>Part Number</i>	<i>Qty.</i>	<i>Description</i>	<i>Ref.</i>	<i>Part Number</i>	<i>Qty.</i>	<i>Description</i>
2	116-5071-03	1	Stiffener-Bagger, Top	6	9202704	4	Washer-Flat
3	116-4478	1	Gasket	7	135-4664	1	Decal-Crush Hazard Bagger
4	112-4000-03	1	Ring-Retainer	8	126-6991	1	Decal-Exmark Logo
5	114439	12	Rivet	9	133-8061	1	Decal-Warning

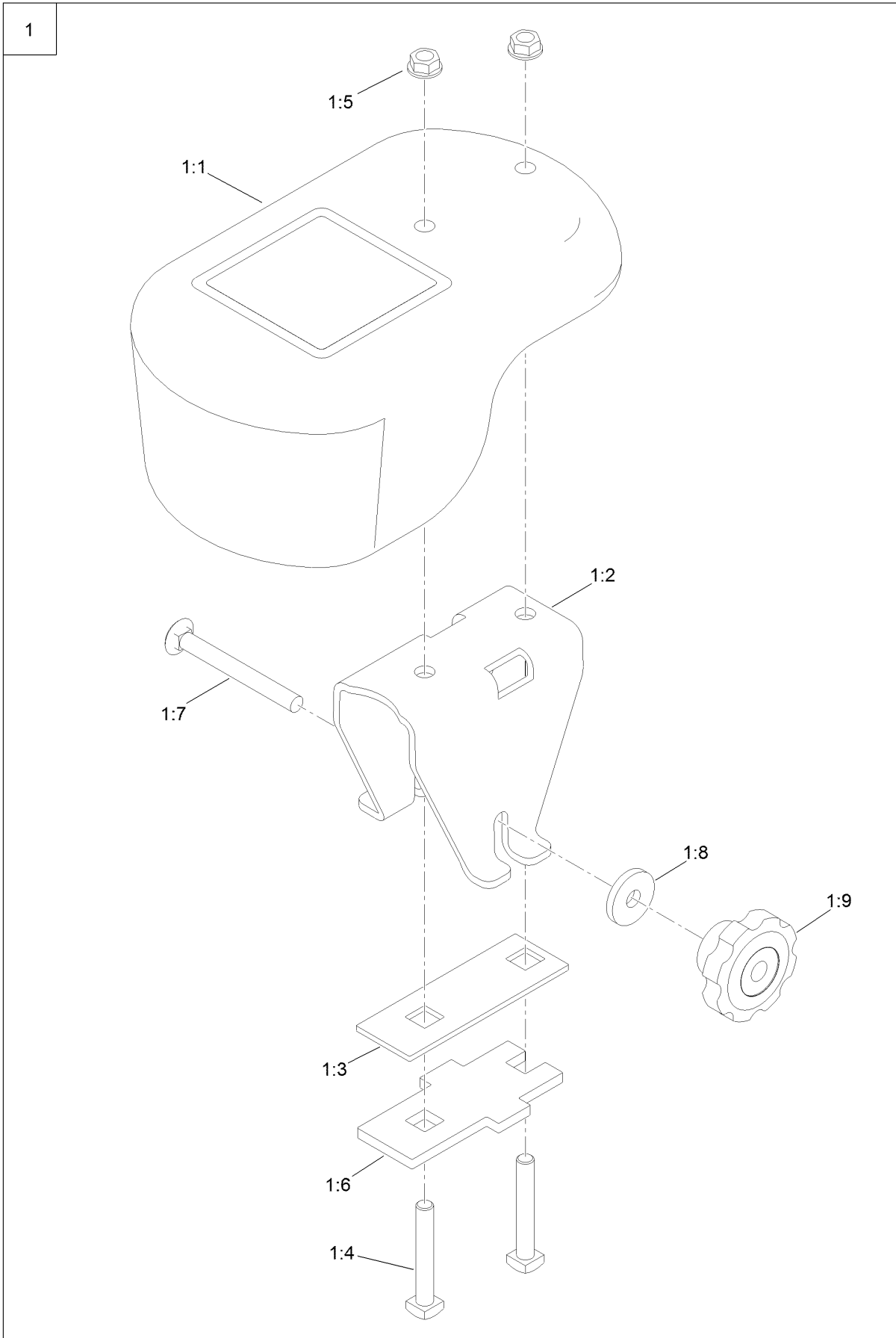
Caster Weight Assembly



Caster Weight Assembly (continued)

<i>Ref.</i>	<i>Part Number</i>	<i>Qty.</i>	<i>Description</i>
1	126-8639	1	Caster Weight Kit

Caster Weight Kit No. 126-8639

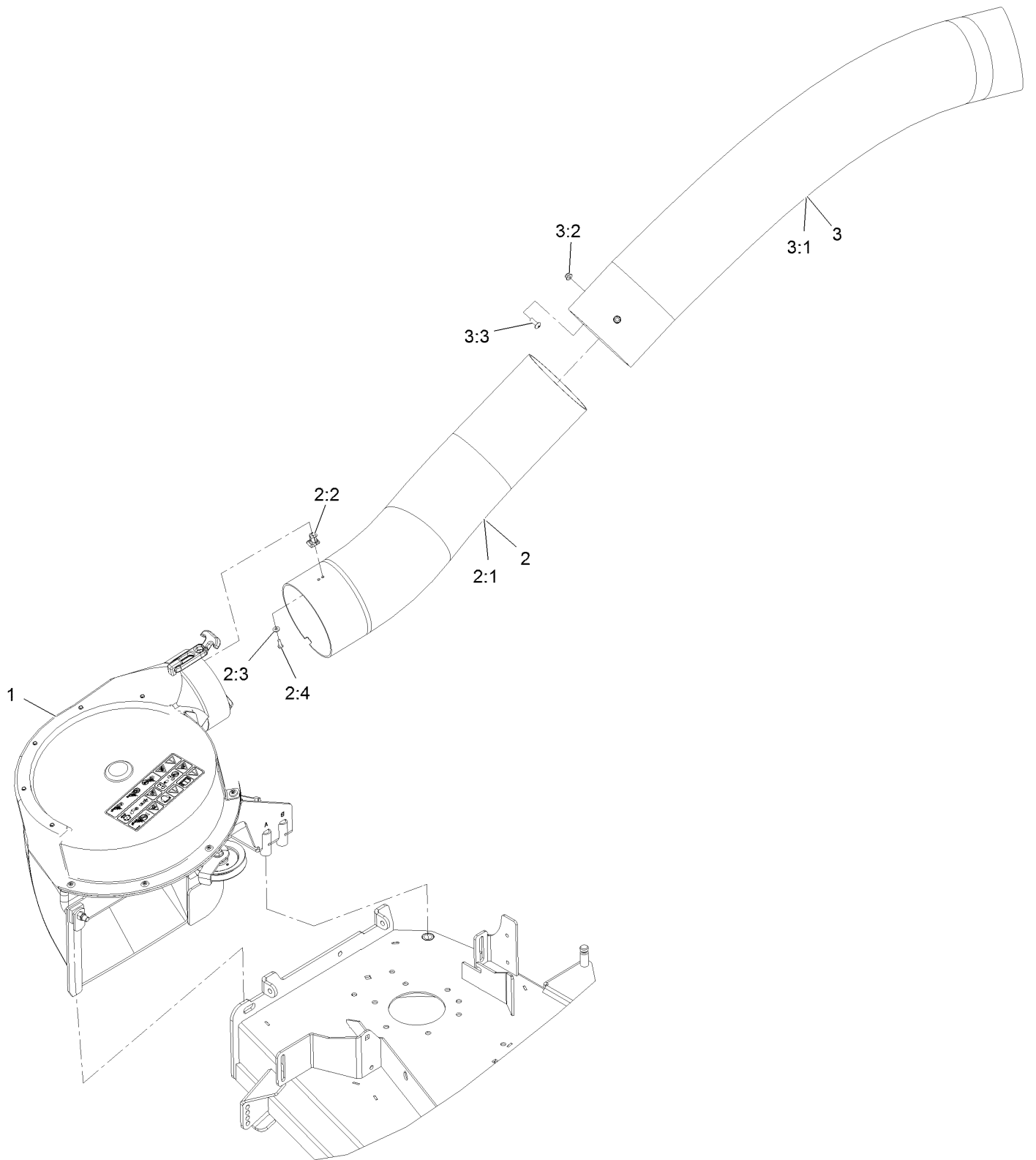


Caster Weight Kit No. 126-8639 (continued)

<i>Ref.</i>	<i>Part Number</i>	<i>Qty.</i>	<i>Description</i>
1	126-7640	2	Caster Weight ASM
1:1	126-7639	1	Weight With Decal ASM
1:2	126-5967-01	1	Channel-Mount, Weight
1:3	126-5966-01	1	Plate-Bracket, Weight
1:4	103-2500	2	Bolt-SQH

<i>Ref.</i>	<i>Part Number</i>	<i>Qty.</i>	<i>Description</i>
1:5	3290-357	2	Nut-HHF, Whiz
1:6	126-5961-01	1	Plate-Bracket, Weight
1:7	3231-11	1	Screw-CARR
1:8	130-5815	1	Washer-Backup
1:9	109-1092	1	Knob

Blower Assembly

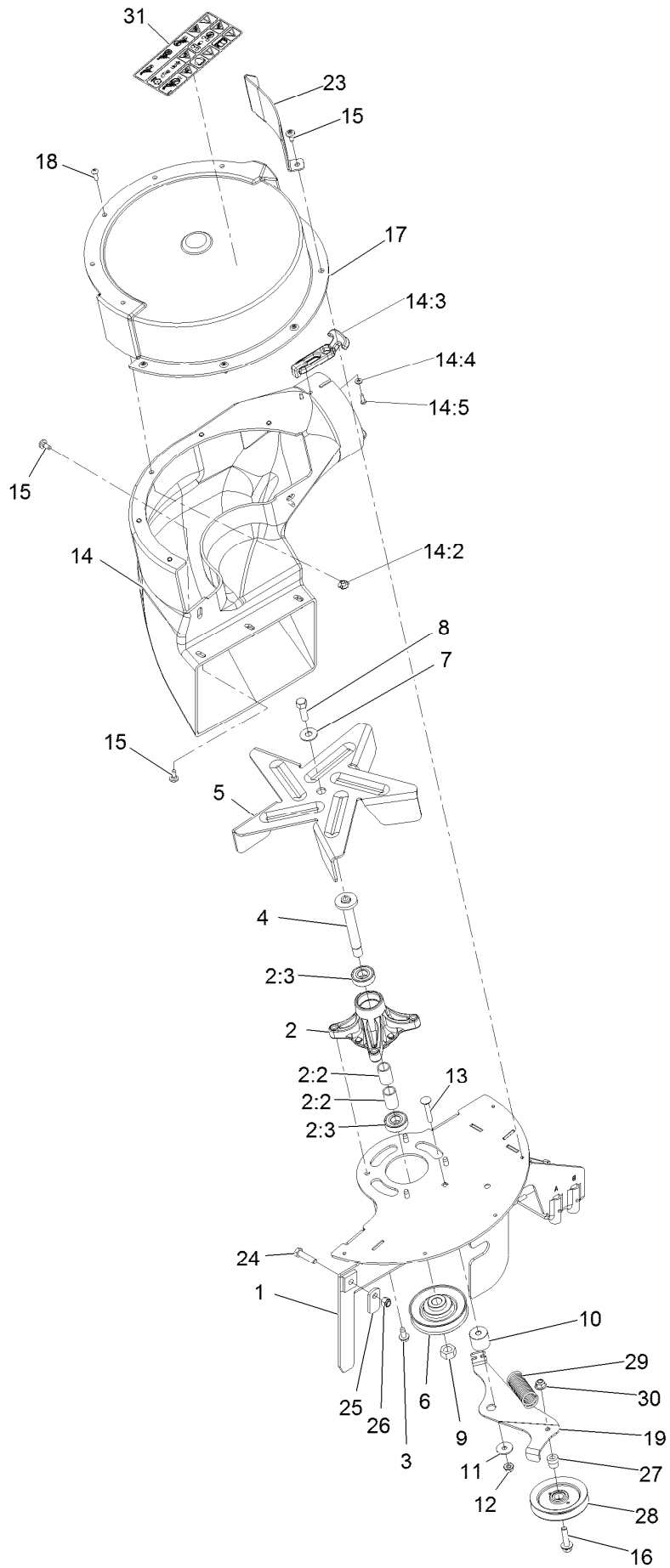


Blower Assembly (continued)

<i>Ref.</i>	<i>Part Number</i>	<i>Qty.</i>	<i>Description</i>	<i>Ref.</i>	<i>Part Number</i>	<i>Qty.</i>	<i>Description</i>
1	135-2605	1	ASM-Blower Powered	2:4	3290-500	2	Screw-PPH #10-24 X 5/8
2	116-4128	1	Lower Tube ASM	3	116-4825	1	Upper Tube ASM
2:1	116-4495	1	Tube-Lower	3:1	116-4496	1	Tube-Upper
2:2	103-4081	2	Latch-Keeper ●	3:2	104-7201	3	Nut-Nyloc 1/4-20 Flg
2:3	3256-14	2	Washer-#10 Std	3:3	1-803076	3	Screw-PPH 1/4-20 X 3/4

● Kit No. 103-4188 - Contains catch, rubber latch, and mounting hardware

Blower Assembly (cont.)

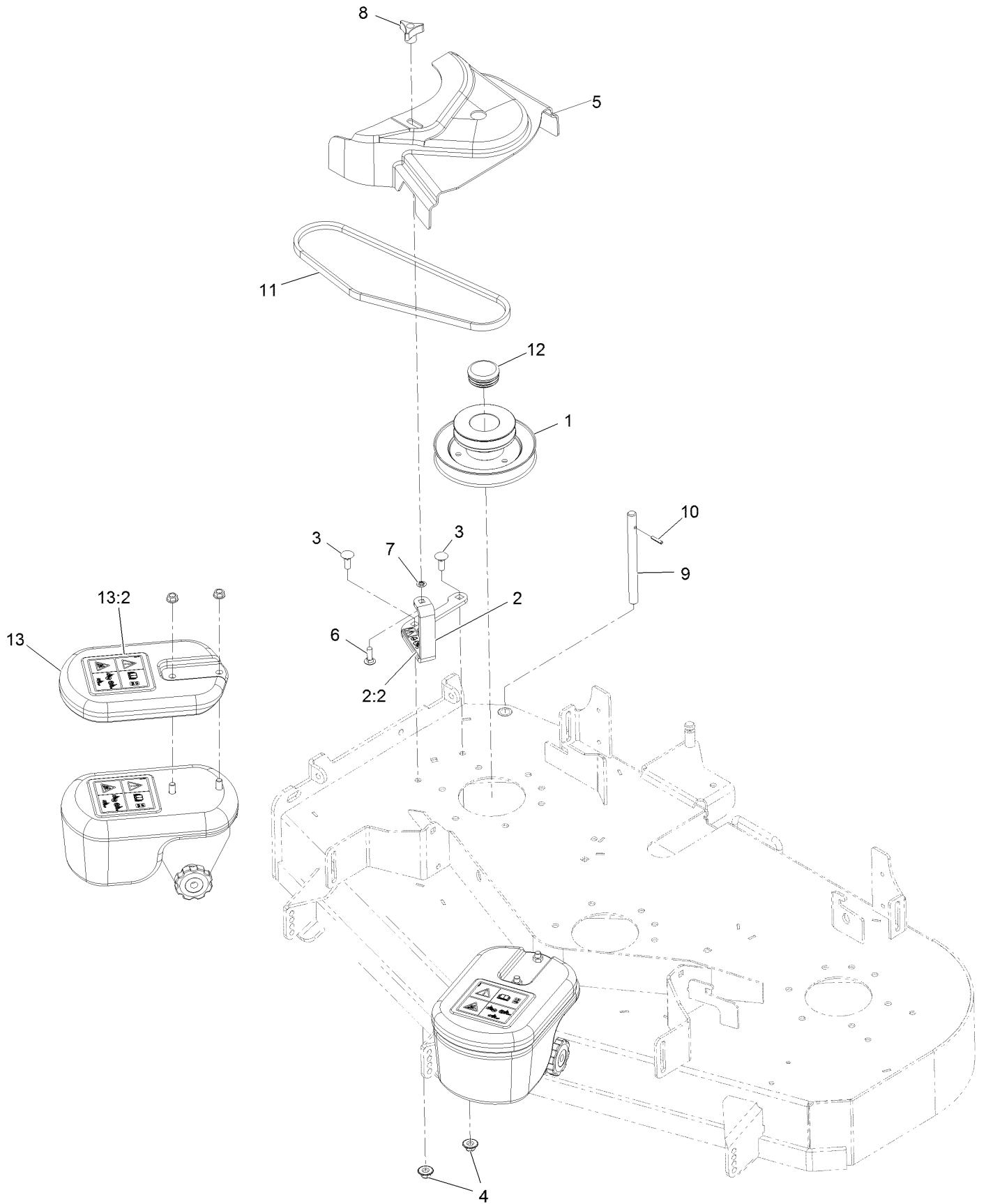


Blower Assembly (cont.) (continued)

<i>Ref.</i>	<i>Part Number</i>	<i>Qty.</i>	<i>Description</i>	<i>Ref.</i>	<i>Part Number</i>	<i>Qty.</i>	<i>Description</i>
1	135-2701-03	1	Weldment-Support, Blower	14:4	9202704	4	Washer-Flat
2	121-0751	1	Spindle ASM	14:5	3290-500	4	Screw-PPH #10-24 X 5/8
2:2	120-7935	2	Spacer	15	120-7950	10	Screw-1/4-20 X 1/2 Tf Torx Plus
2:3	136-5441	2	Bearing-Ball	16	114-4681	1	Screw-HHF
3	32144-70	4	Screw-HWH 5/16-18 X 3/4 Tf	17	135-5032	1	ASM-Blower Cover
4	137-7009	1	Shaft - Spindle	18	3258-166	5	Screw-PPH 1/4-20 X 3/4
5	133-4336	1	Fan-Blower	19	135-3416	1	Arm-Idler, Blower
6	135-3436	1	Sheave-Blower Offset	23	136-9213-03	1	Guard-Blower
7	3290-465	1	Washer-Spring Disc	24	323-8	1	Screw-HH 3/8-16 X 1 1/2
8	108-8823	1	Screw-HH	25	1-353054	1	Latch-Catcher, Grass
9	3219-16	1	Nut-Hex	26	3296-39	1	Nut-Nyloc 3/8-16
10	135-4488	1	Spacer-Stepped	27	1-653367	1	Hub, Spacer
11	5-4460	1	Washer-Pivot	28	103-0483	1	Idler, Flat
12	104-8300	1	Nut-Nyloc 5/16-18 Flg	29	1-653331	1	Spring
13	127-6841	1	Screw-CARR	30	104-8301	1	Nut-Nyloc 3/8-16 Flg
14	135-5461	1	ASM-Blower Chute, Plastic	31	135-3973	1	Decal-Warning Blower W/ROPS
14:2	136-9187	5	Insert-T-Nut				
14:3	103-4080	2	Latch-Rubber ●				

● Kit No. 103-4188 - Contains catch, rubber latch, and mounting hardware

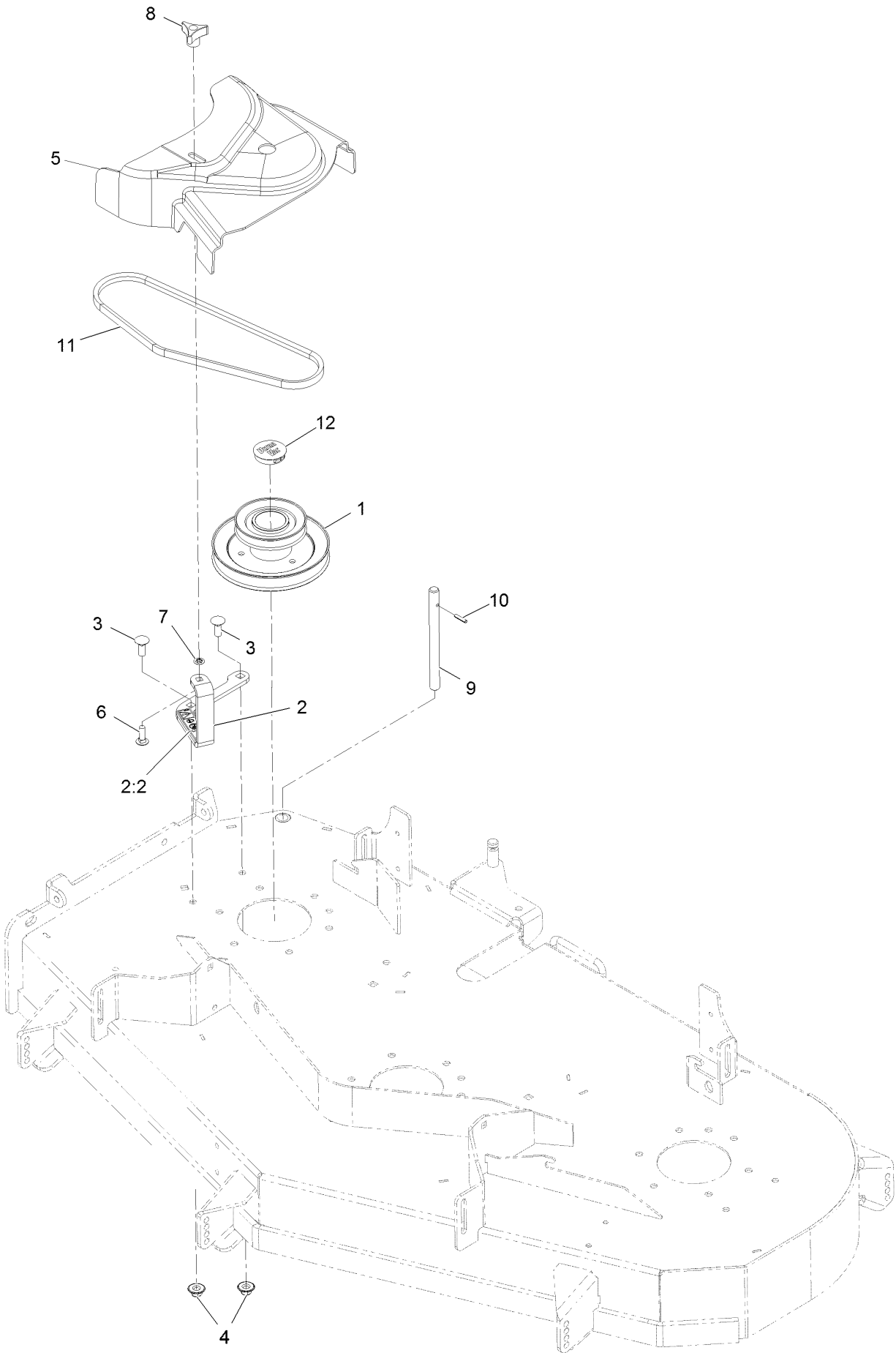
Completing Kit No. 135-3911



Completing Kit No. 135-3911 (continued)

<i>Ref.</i>	<i>Part Number</i>	<i>Qty.</i>	<i>Description</i>	<i>Ref.</i>	<i>Part Number</i>	<i>Qty.</i>	<i>Description</i>
1	126-6123	1	Jackshaft- Uv Drive 483	8	1-323385	1	Knob-3 Prong
2	116-7036	1	ASM-Cvr Brkt W/Decal	9	1-353050	1	Shaft-Catcher, Grass
2:2	119-0217	1	Decal-Danger	10	1-806323	1	Rollpin 3/16 X 7/8
3	3231-2	2	Bolt-Carriage 3/8-16 X 1	11	116-4844	1	Belt-Uv E 48
4	109-6658	2	Nut-Nyloc 3/8-16 Flg	12	135-2038	1	Plug-Round Plastic
5	135-3922	1	Cover-Belt, Uv 48 Entry	13	126-9684	2	Weight
6	3230-2	1	Bolt-Carriage 5/16-18 X 1	13:2	126-4662	1	Decal-Warning, Traction
7	109-5667	1	Ring-Bolt Retaining				

Completing Kit No. 135-3912

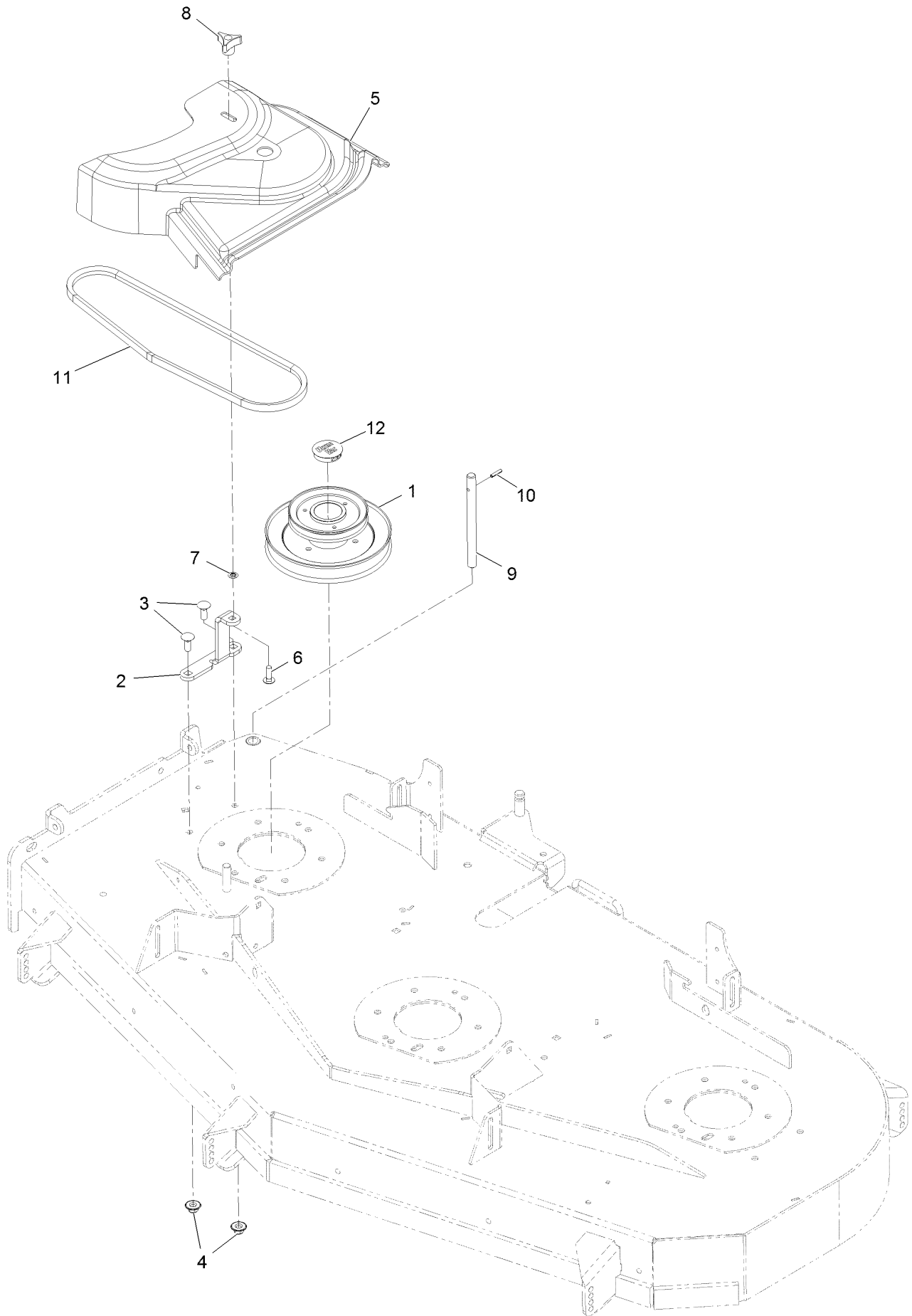


Completing Kit No. 135-3912 (continued)

<i>Ref.</i>	<i>Part Number</i>	<i>Qty.</i>	<i>Description</i>
1	126-6124	1	Jackshaft-Uv Drive 523
2	116-7036	1	ASM-Cvr Brkt W/Decal
2:2	119-0217	1	Decal-Danger
3	3231-2	2	Bolt-Carriage 3/8-16 X 1
4	109-6658	2	Nut-Nyloc 3/8-16 Flg
5	135-3923	1	Cover-Belt, Uv 52 Entry
6	3230-2	1	Bolt-Carriage 5/16-18 X 1

<i>Ref.</i>	<i>Part Number</i>	<i>Qty.</i>	<i>Description</i>
7	109-5667	1	Ring-Bolt Retaining
8	1-323385	1	Knob-3 Prong
9	1-353050	1	Shaft-Catcher, Grass
10	1-806323	1	Rollpin 3/16 X 7/8
11	1-653333	1	Belt, Blower (48")
12	103-1279	1	Plug

Completing Kit No. 135-3913

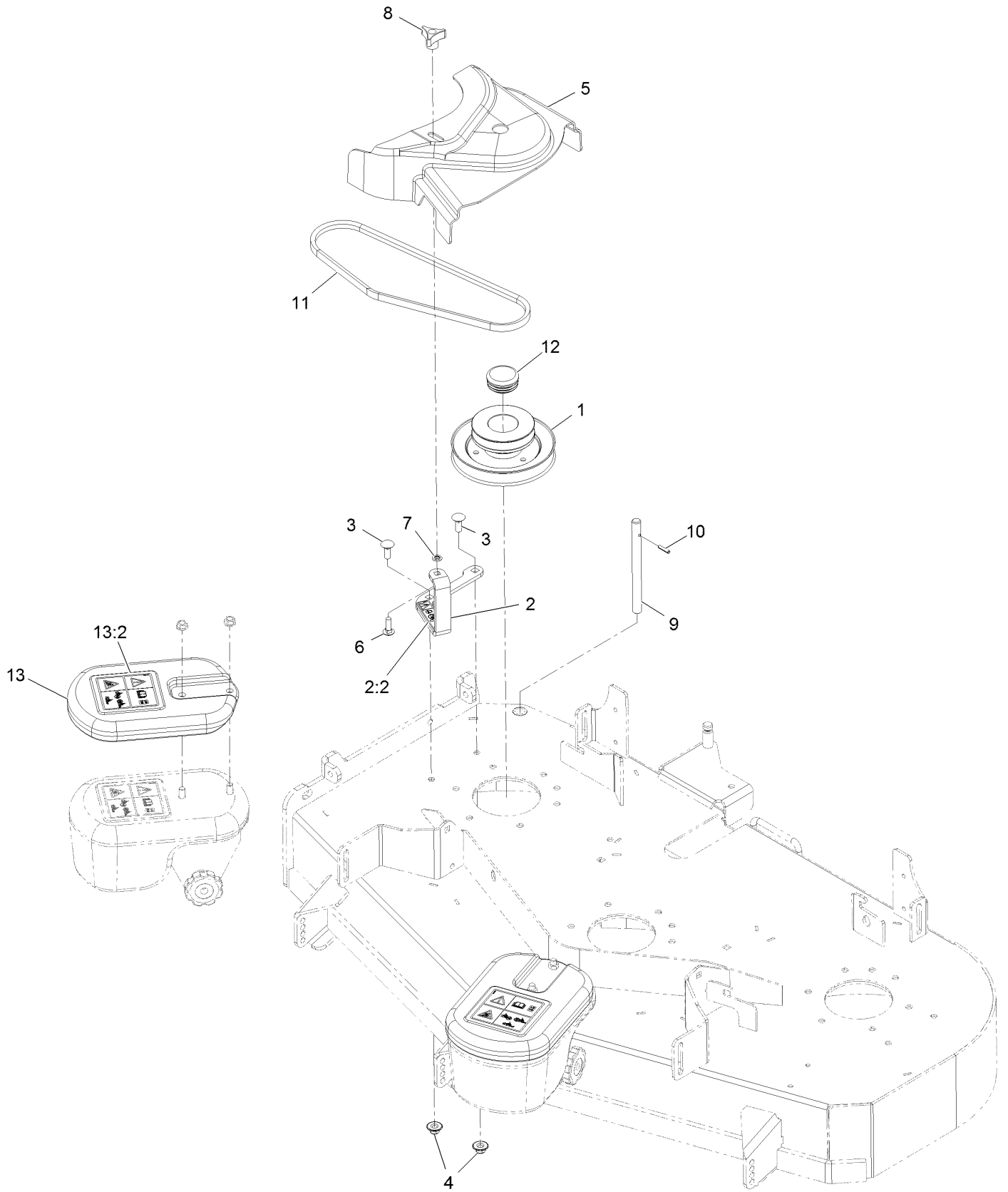


Completing Kit No. 135-3913 (continued)

<i>Ref.</i>	<i>Part Number</i>	<i>Qty.</i>	<i>Description</i>
1	126-6125	1	Jackshft- Uv Drive 603
2	135-2263-03	1	Bracket-Belt Cover [black]
3	3231-2	2	Bolt-Carriage 3/8-16 X 1
4	109-6658	2	Nut-Nyloc 3/8-16 Fig
5	135-3497	1	Cover-Belt, Uv 60 Entry
6	3230-2	1	Bolt-Carriage 5/16-18 X 1

<i>Ref.</i>	<i>Part Number</i>	<i>Qty.</i>	<i>Description</i>
7	109-5667	1	Ring-Bolt Retaining
8	1-323385	1	Knob-3 Prong
9	1-353050	1	Shaft-Catcher, Grass
10	1-806323	1	Rollpin 3/16 X 7/8
11	703636	1	V-Belt (17569)
12	103-1279	1	Plug

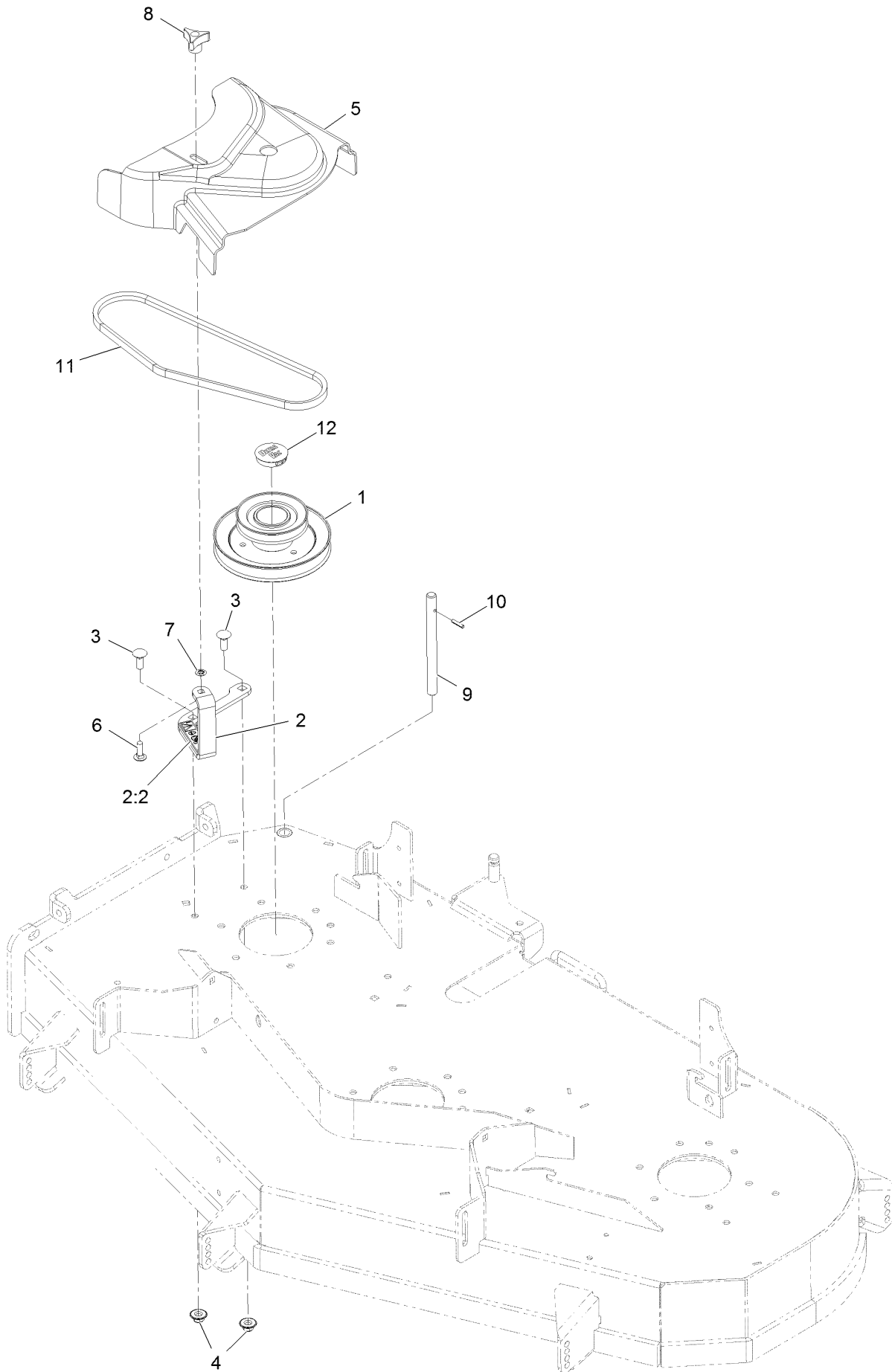
Completing Kit No. 135-5214



Completing Kit No. 135-5214 (continued)

<i>Ref.</i>	<i>Part Number</i>	<i>Qty.</i>	<i>Description</i>	<i>Ref.</i>	<i>Part Number</i>	<i>Qty.</i>	<i>Description</i>
1	116-2088	1	Jackshaft-Uv Drive, 484 Splined	7	109-5667	1	Ring-Retaining, Bolt
2	116-7036	1	ASM-Cvr Brkt W/Decal	8	1-323385	1	Knob-3 Prong
2:2	119-0217	1	Decal-Danger	9	1-353050	1	Shaft-Catcher, Grass
3	3231-2	2	Bolt-CARR	10	1-806323	1	Pin-Roll
4	109-6658	2	Nut-Flange, NI	11	116-4844	1	Belt-Uv E 48
5	135-3922	1	Cover-Belt, Uv 48 Entry	12	135-2038	1	Plug-Round Plastic
6	3230-2	1	Bolt-CARR	13	126-9684	2	Weight
				13:2	126-4662	1	Decal-Warning, Traction

Completing Kit No. 135-5215

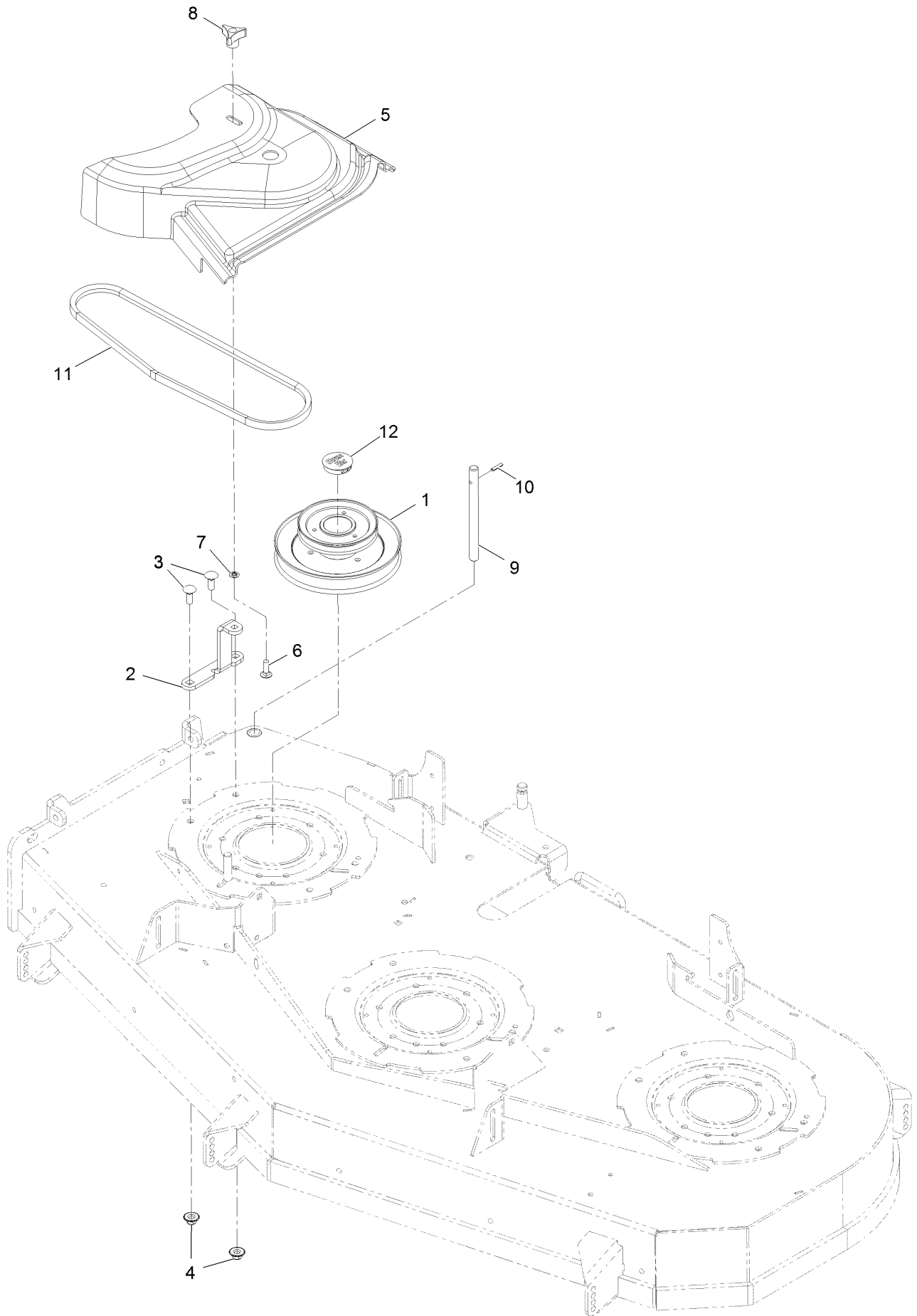


Completing Kit No. 135-5215 (continued)

<i>Ref.</i>	<i>Part Number</i>	<i>Qty.</i>	<i>Description</i>
1	116-2089	1	Jackshaft,Uv Drive 524 Splined
2	116-7036	1	ASM-Cvr Brkt W/Decal
2:2	119-0217	1	Decal-Danger
3	3231-2	2	Bolt-CARR
4	109-6658	2	Nut-Flange, NI
5	135-3923	1	Cover-Belt, Uv 52 Entry

<i>Ref.</i>	<i>Part Number</i>	<i>Qty.</i>	<i>Description</i>
6	3230-2	1	Bolt-CARR
7	109-5667	1	Ring-Retaining, Bolt
8	1-323385	1	Knob-3 Prong
9	1-353050	1	Shaft-Catcher, Grass
10	1-806323	1	Pin-Roll
11	1-653333	1	Belt, Blower (48")
12	103-1279	1	Plug

Completing Kit No. 135-5216



Completing Kit No. 135-5216 (continued)

<i>Ref.</i>	<i>Part Number</i>	<i>Qty.</i>	<i>Description</i>
1	116-2090	1	Jackshaft,Uv Drive 604 Splined
2	135-2263-03	1	Bracket-Belt Cover [black]
3	3231-2	2	Bolt-Carriage 3/8-16 X 1
4	109-6658	2	Nut-Nyloc 3/8-16 Flg
5	135-3497	1	Cover-Belt, Uv 60 Entry
6	3230-2	1	Bolt-Carriage 5/16-18 X 1

<i>Ref.</i>	<i>Part Number</i>	<i>Qty.</i>	<i>Description</i>
7	109-5667	1	Ring-Bolt Retaining
8	1-323385	1	Knob-3 Prong
9	1-353050	1	Shaft-Catcher, Grass
10	1-806323	1	Rollpin 3/16 X 7/8
11	703636	1	V-Belt (17569)
12	103-1279	1	Plug

Notes:

Notes:

EXMARK ACCESSORIES AND OPTIONS*

MID-MOUNT RIDING ACCESSORIES AND OPTIONS

CUSTOM RIDE SEAT SUSPENSION SYSTEM	OPERATOR CONTROLLED DISCHARGE
FULL SUSPENSION SEAT	SUN SHADE
DECK LIFT ASSIST KIT	TRASH CONTAINER
HITCH KIT	TURF STRIPER
LIGHT KIT	ULTRA VAC COLLECTION SYSTEM
12V POWER PORT	ULTRA VAC QUICK DISPOSAL SYSTEM
MICRO-MULCH SYSTEM	

OUT-FRONT RIDING ACCESSORIES AND OPTIONS

CUSTOM RIDE SEAT SUSPENSION SYSTEM	SNOW BLADE
DUAL-TAIL WHEEL	SNOWBLOWER
FLOOR PAN EXTENDER	SUN SHADE
HITCH KIT	TRASH CONTAINER
LIGHT KIT	ULTRA VAC COLLECTION SYSTEM
MICRO-MULCH SYSTEM	ULTRA VAC QUICK DISPOSAL SYSTEM
ROLL OVER PROTECTION SYSTEM (ROPS)	WEATHER CAB

WALK-BEHIND ACCESSORIES AND OPTIONS

GRASS CATCHER	TURF STRIPER
MICRO-MULCH SYSTEM	STANDON

*Some accessories and options not available for some models.

Place Model No. and Serial No.
Label Here (Included in the Literature
Pack) or Fill in Below

Model No. _____

Serial No. _____

Date Purchased _____

Engine Model No. and Spec. No. _____

Engine Serial No. (E/No) _____

© 2018 Exmark Mfg. Co., Inc.
2101 Ashland Ave
Beatrice, NE 68310
All Rights Reserved

Part No. 4503-928 Rev. A
(402) 223-6375
Fax (402) 223-5489
Printed in the USA.

