



<h2>PTO Engagement Kit</h2>	
Part No. 99-8515	<b>INSTALLATION INSTRUCTIONS</b>

### Loose Parts

**Note:** Use the chart below to identify parts for assembly.

DESCRIPTION	QTY.	USE
Flat washer	2	Install engagement kit
Hex Head Screw	1	
Hex Lock Nut	1	
Spacer	1	
Spring	1	

### Installing engagement kit

1. Disengage the power take off (PTO), set the parking brake, and turn the ignition key to "OFF" to stop the engine. Remove the key.

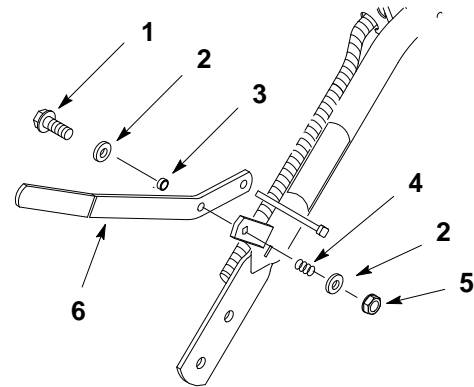
2. Remove existing hardware from blade engagement lever. Discard old hardware.

**Note:** You may have to loosen gas tank. Do not remove gas tank.

3. Install new hardware and using existing lever. (Fig. 1).

**Note:** Do not over tighten hardware. The lever must engage and disengage smoothly (Fig. 1).

4. Retighten gas tank if needed.



m-4174

**Figure 1**

- |                    |                     |
|--------------------|---------------------|
| 1. Hex Head Screw  | 4. Spring           |
| 2. Flat Washer (2) | 5. Nut              |
| 3. Spacer          | 6. Engagement Lever |

## Removing Extension Spring

1. Disengage the power take off (PTO), set the parking brake, and turn the ignition key to "OFF" to stop the engine. Remove the key.
2. Remove the knobs and belt cover atop mower.
3. Remove the extension spring and discard (Fig. 2)

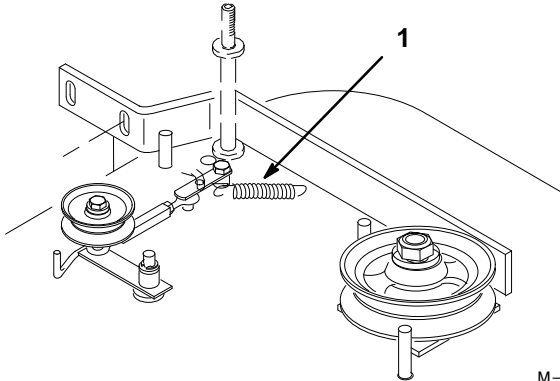


Figure 2

M-4173

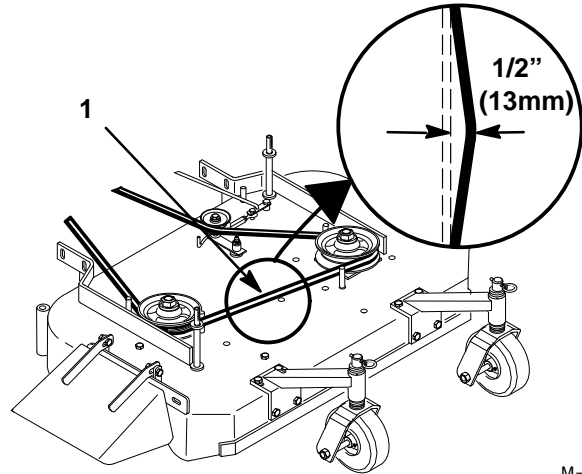
1. Extension Spring

4. Engage idler and check belt tension as noted (Fig. 3).

**Note:** Proper belt tension is 10–15 lbs. with the belt deflected a 1/2" (13mm) halfway between pulleys (Fig. 3).

5. If adjustment is needed: Loosen locknut on turnbuckle and rotate the turnbuckle outward to increase tension on belt. Rotate turnbuckle inward to decrease tension on belt (Fig. 4).

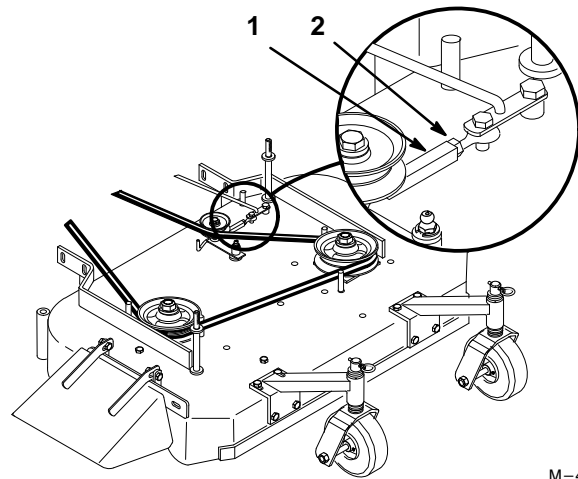
**Note:** It is necessary to fully and manually disengage mower.



M-4172

Figure 3

1. Belt (1/2" (13mm) Deflection)



M-4171

Figure 4

1. Turnbuckle
2. Locknut