



## CE Kit

### Dingo® 323 Compact Tool Carrier

Model No. 22366

## Installation Instructions

# Safety

## Safety and Instructional Decals



Safety decals and instructions are easily visible to the operator and are located near any area of potential danger. Replace any decal that is damaged or missing.



1. Brake engaged
2. Parking brake
3. Brake disengaged

# Installation

## Loose Parts

Use the chart below to verify that all parts have been shipped.

Procedure	Description	Qty.	Use
<b>1</b>	No parts required	–	Prepare the machine.
<b>2</b>	No parts required	–	Remove the rear-wheel hubs.
<b>3</b>	Brake bar Brake-bar bracket Flange-head bolt Brake-cable bracket Parking-brake cable Locking collar with set screw Large spring	2 2 2 2 1 2 1	Assemble the parking-brake locking mechanism.
<b>4</b>	Convoluted cable tube Bolt (5/16 x 1 inch) Locknut (5/16 inch)	1 4 4	Install the parking-brake locking mechanism.



Procedure	Description	Qty.	Use
<b>5</b>	Parking-brake lever assembly	1	Install the parking-brake lever.
	Clevis pin (3/4 inch)	1	
	Cotter pin (3/4 inch)	1	
<b>6</b>	Wheel-hub assembly	2	Install the rear-wheel hubs.
	Hub locknut	2	
<b>7</b>	No parts required	–	Adjust the parking brake.
<b>8</b>	Loader-valve lock assembly	1	Install the loader-valve lock.
	Self-tapping bolts (1/4 x 5/8 inch)	2	
	Bolt (1/4 x 2 inches)	1	
	Spacer	1	
<b>9</b>	CE-information decal	1	Install the CE-information decal.

# 1

## Preparing the Machine

No Parts Required

### Procedure

1. Park the machine on a level surface.
2. Lower the loader arms.
3. Engage the parking brake.
4. Shut off the engine and remove the key.
5. Raise the machine off the ground and support it using jack stands.

**Note:** Use jack stands rated for your machine. Refer to the *Operator's Manual* for your machine to determine the weight.

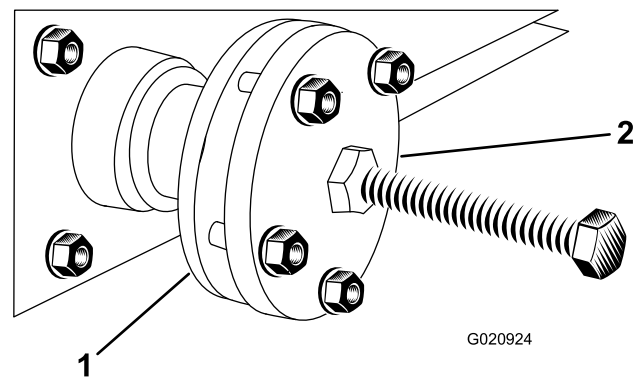
# 2

## Removing the Rear-Wheel Hubs

No Parts Required

### Procedure

1. Remove the rear wheels.
2. Remove and discard the locknuts securing the rear-wheel hubs.
3. Using a hub puller (K-Line Special Service Tools, part number TOR4096), remove the rear-wheel hubs ([Figure 1](#)).



**Figure 1**

1. Hub
2. Hub puller

4. Save the key from each shaft.

# 3

## Assembling the Parking-Brake Locking Mechanism

Parts needed for this procedure:

2	Brake bar
2	Brake-bar bracket
2	Flange-head bolt
2	Brake-cable bracket
1	Parking-brake cable
2	Locking collar with set screw
1	Large spring

### Procedure

1. Fasten the brake-bar brackets to the brake bars using 2 bolts (Figure 2).

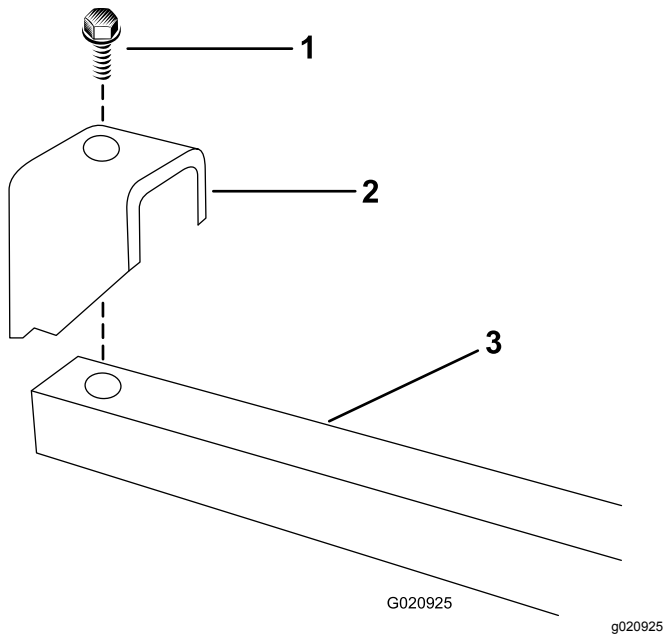


Figure 2

1. Bolt
2. Brake-bar bracket
3. Brake bar

2. Arrange the brake cable brackets on a flat surface (Figure 3).

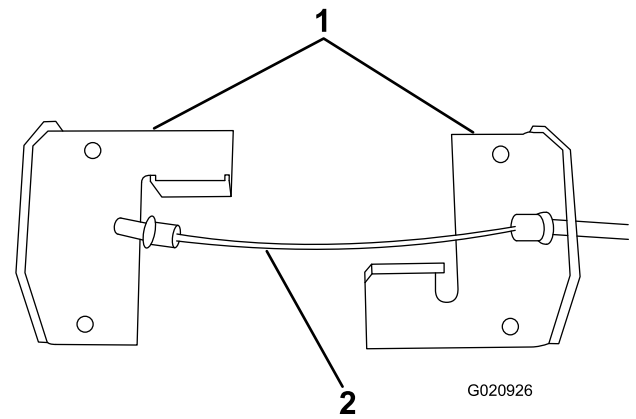


Figure 3

1. Brake-cable bracket
2. Brake cable

3. Insert the cable through the right brake-cable bracket (Figure 3).
4. Slide the brake-cable bars through the openings in the brake-cable brackets (Figure 4).

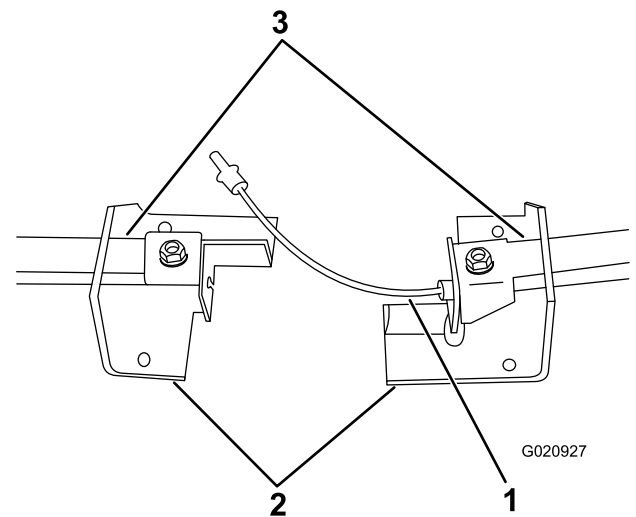
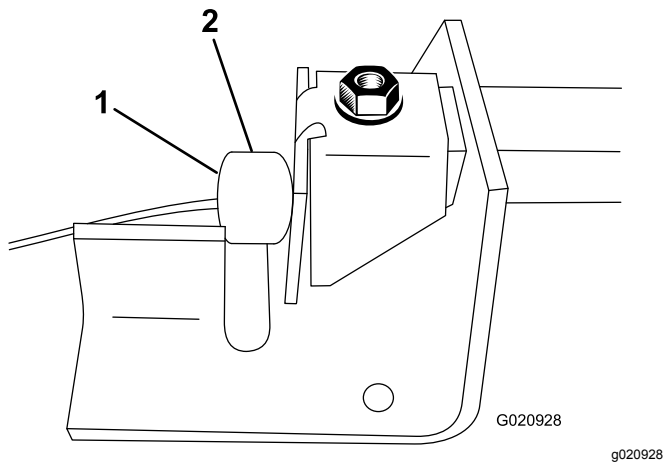


Figure 4

1. Brake cable
2. Brake-cable bracket
3. Brake-cable bar

5. Set the cable into the right brake-bar bracket, and secure it firmly in place with a locking collar and setscrew assembly (Figure 5).

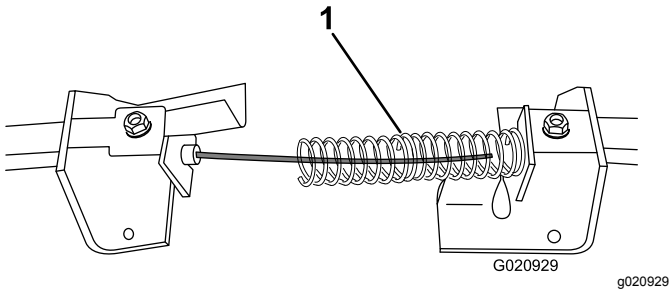
**Note:** The cable must be securely held in the bracket with no movement.



**Figure 5**

1. Locking collar
2. Set screw

6. Position the large spring over the cable ([Figure 6](#)).

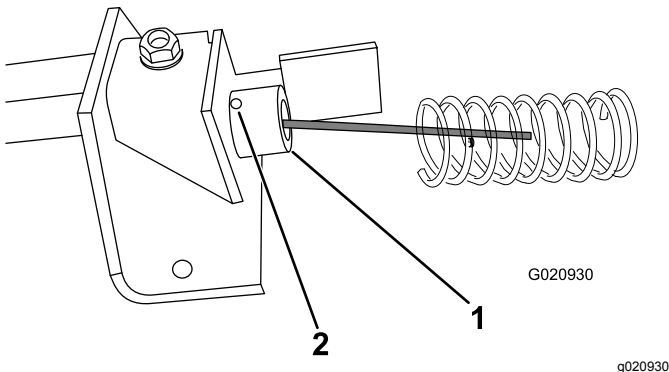


**Figure 6**

1. Large spring

7. Set the cable into the left brake-bar bracket, and secure it with a locking collar and a setscrew assembly ([Figure 7](#)).

**Note:** The cable must be securely held in the bracket with no movement.



**Figure 7**

1. Locking collar
2. Setscrew assembly

# 4

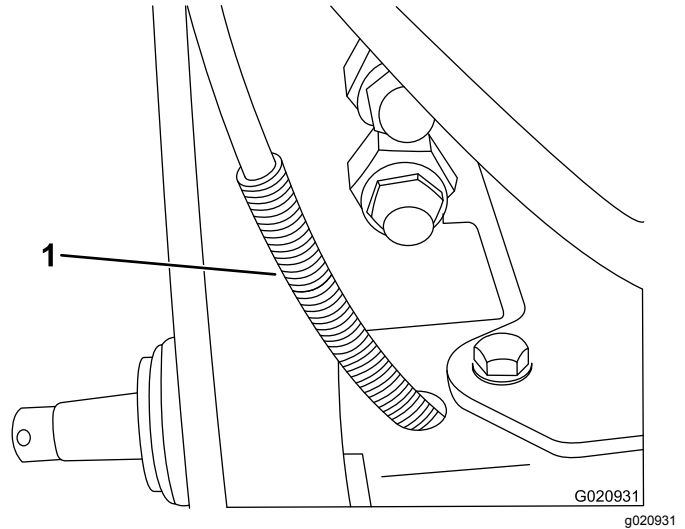
## Installing the Parking-Brake Locking Mechanism

**Parts needed for this procedure:**

1	Convolute cable tube
4	Bolt (5/16 x 1 inch)
4	Locknut (5/16 inch)

### Procedure

1. Slide the convolute cable tube over the brake cable ([Figure 8](#)).



**Figure 8**

1. Parking brake cable with the convolute tube

2. From under the machine, route the end of the cable through the frame in the lower-left corner of the frame ([Figure 8](#)).

**Note:** Ensure that convolute cable tube protrudes at least 10 to 15 cm (4 to 6 inches) through the hole.

3. Position the brake assembly under the machine against the back of the frame with the brake bars through the holes in the side of the frame, located in front of the wheel motors ([Figure 9](#)).

# 5

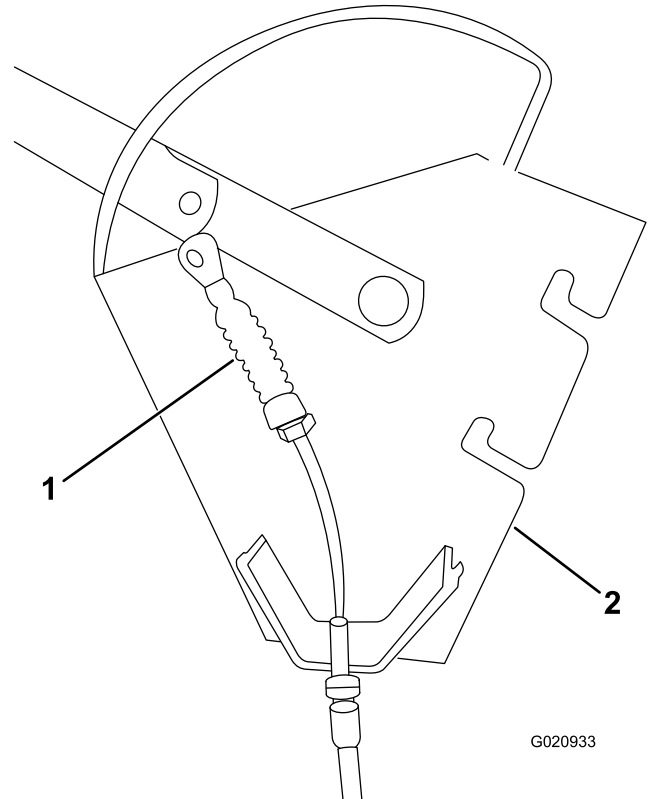
## Installing the Parking-Brake Lever

### Parts needed for this procedure:

1	Parking-brake lever assembly
1	Clevis pin (3/4 inch)
1	Cotter pin (3/4 inch)

### Procedure

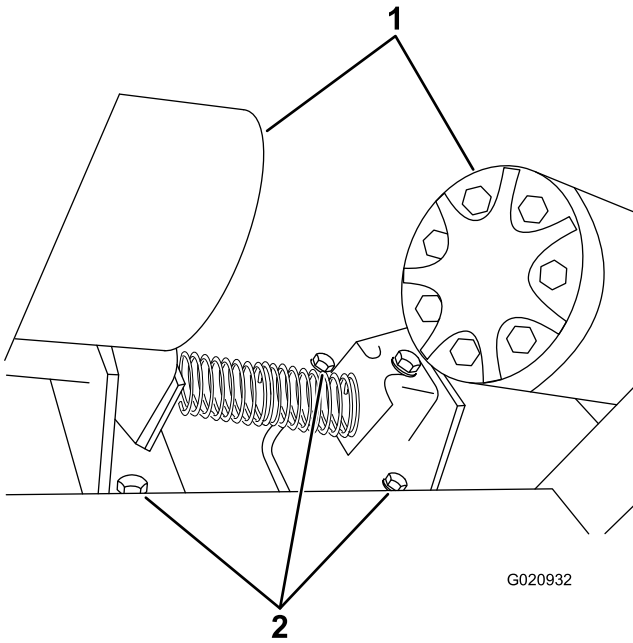
1. Route the cable across the parking-brake lever assembly ([Figure 10](#)).



**Figure 10**

1. Parking-brake cable
2. Parking-brake lever assembly

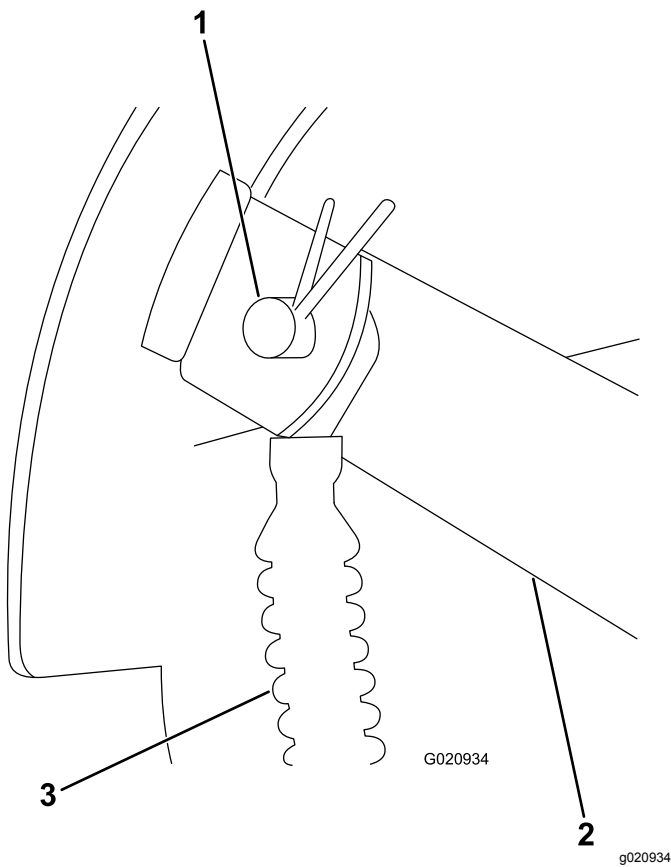
2. Secure the cable to the lever with the clevis pin (3/4 inch) and the cotter pin (3/4 inch) as shown in [Figure 11](#).



**Figure 9**

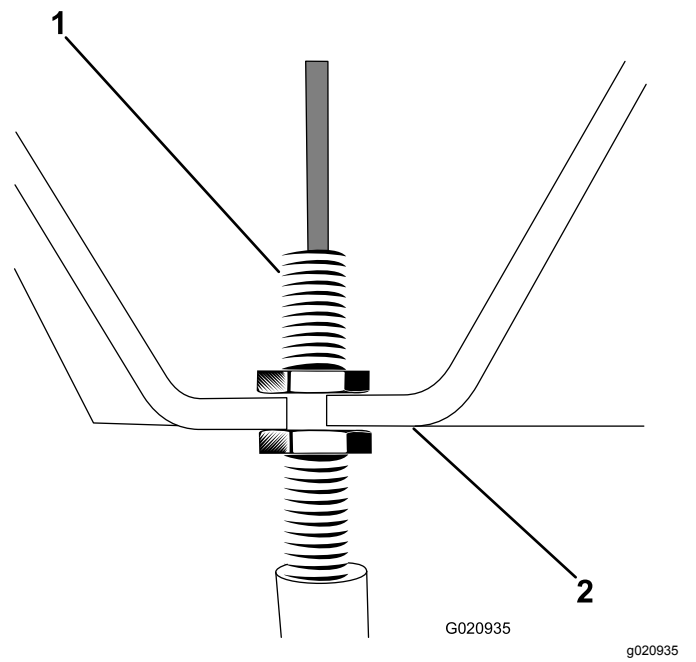
1. Rear wheel motors
  2. Bolts (5/16 x 1 inch) and locknuts (5/16 inch)—fourth bolt and locknut not visible
- 
4. Secure the brake assembly to the frame with the 4 bolts (5/16 x 1 inch) and 4 locknuts (5/16 inch) as shown in [Figure 9](#).

**Note:** You must push the bolts through the frame and the brake cable brackets from the rear of the machine.



**Figure 11**

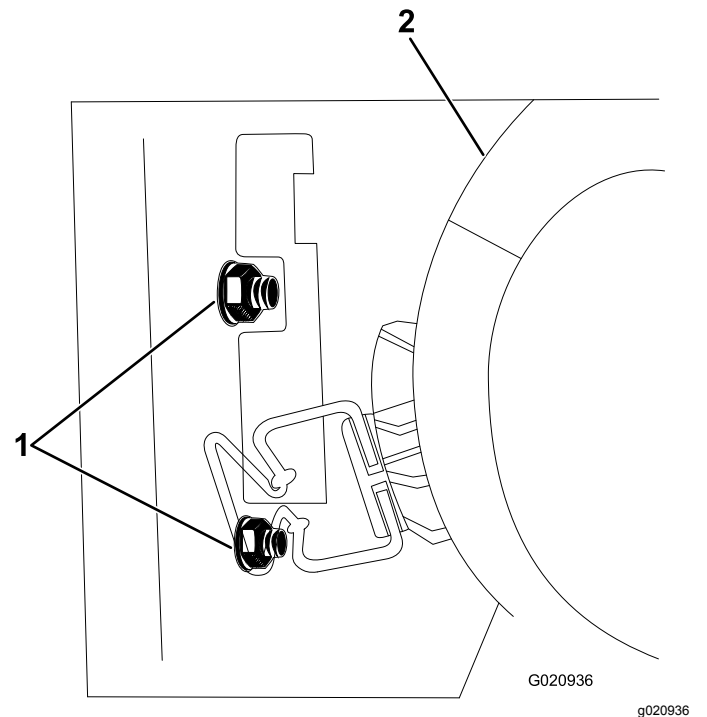
1. Parking-brake lever
  2. Clevis pin (3/4 inch) and cotter pin (3/4 inch)
  3. Parking-brake cable
- 
3. Lightly tighten the nuts on the adjustment collar around the bracket on the lever plate ([Figure 12](#)).



**Figure 12**

1. Cable with adjustment nuts
2. Bracket on the parking-brake lever assembly

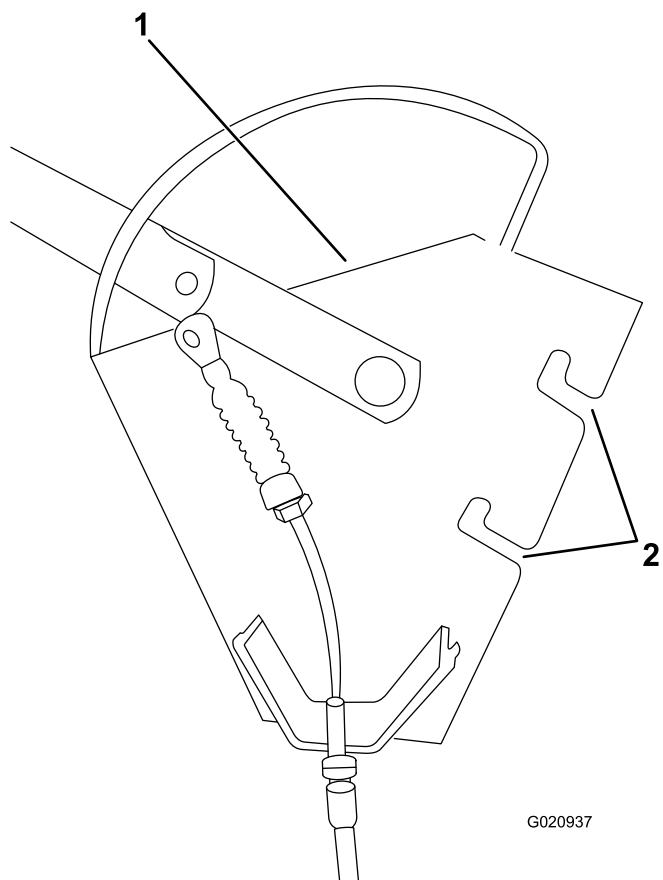
- 
4. Loosen the nuts securing the air cleaner to the frame ([Figure 13](#)).



**Figure 13**

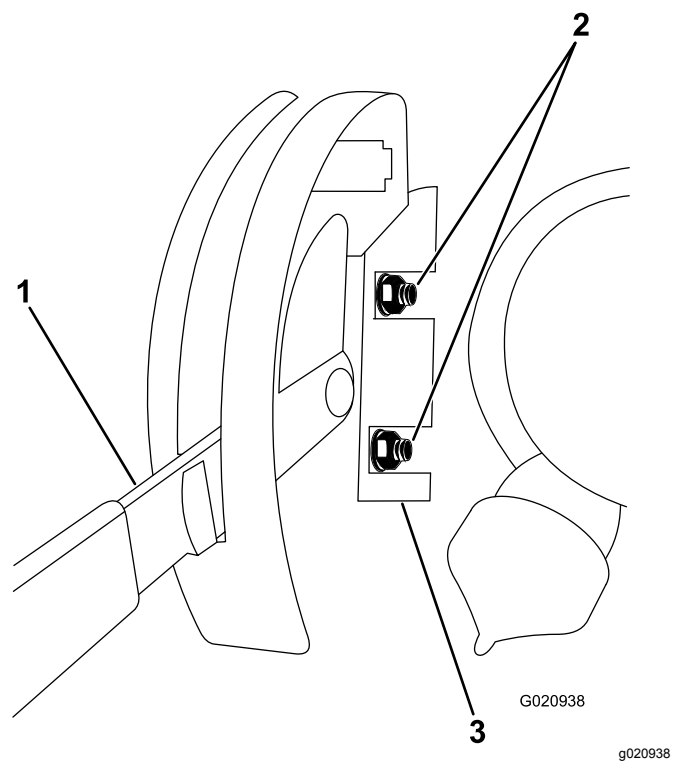
1. Air-cleaner nuts
2. Air cleaner

- 
5. Slide the bolts in the lever assembly over the air-cleaner bolts between the frame and the air-cleaner mounting-bracket as shown in [Figure 14](#) and [Figure 15](#).



**Figure 14**

1. Lever assembly
2. Lever-assembly slots



**Figure 15**

1. Lever assembly
2. Air-cleaner bolts
3. Air-cleaner mounting-bracket

6. With the slots in the plate positioned over the air-cleaner bolts, tighten the air-cleaner nuts.

# 6

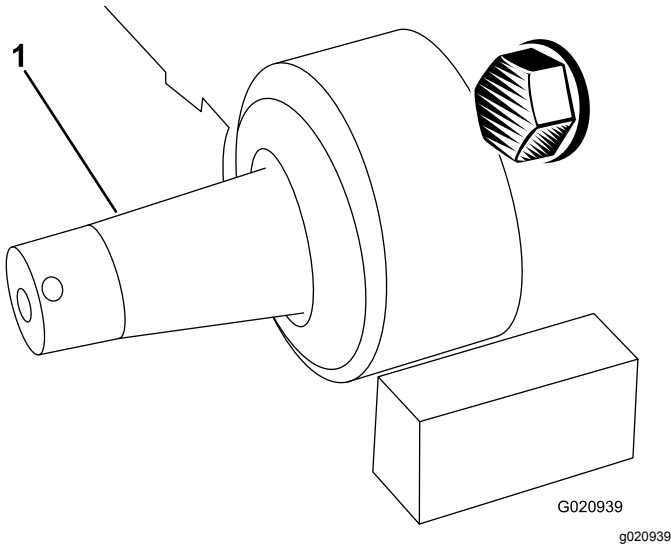
## Installing the Rear-Wheel Hubs

Parts needed for this procedure:

2	Wheel-hub assembly
2	Hub locknut

### Procedure

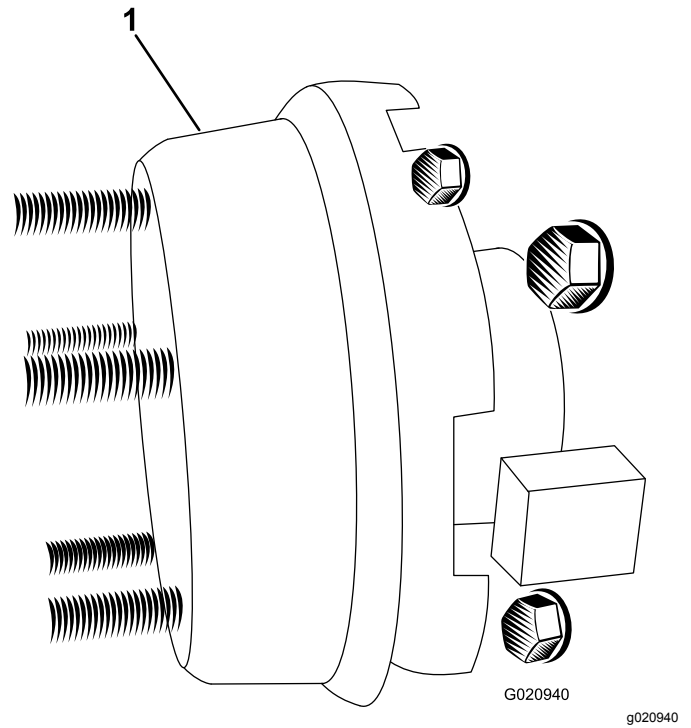
1. Clean the rear-drive shafts and the inside of the tapered bore of the wheel hubs with alcohol or a degreaser ([Figure 16](#)).



**Figure 16**

1. Rear-drive shaft (left side)

2. Disengage the parking-brake lever.
3. Place the previously-removed keys into the slots in the drive shafts.
4. Place the new wheel hubs onto the drive shafts ([Figure 17](#)).



**Figure 17**

1. Wheel hub (left side)

5. Secure the hubs with new hub locknuts.
6. Torque the nuts to 406 to 474 N·m (300 to 350 ft-lb).
7. Install the rear wheels.
8. Torque the wheel lug nuts to 68 N·m (50 ft-lb).



# 7

## Adjusting the Parking Brake

No Parts Required

### Procedure

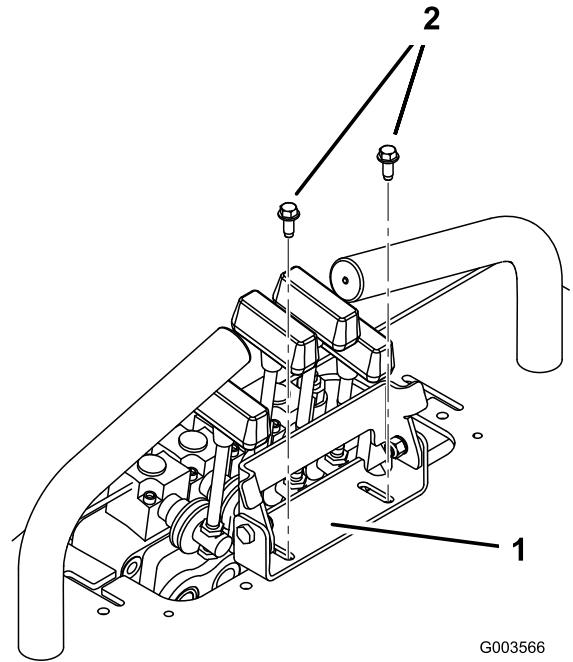
1. Push the parking-brake lever up and forward to disengage it.
2. Check the brake bars protruding from either side of the machine.

**Note:** The bars should be about 3 mm (1/8 inch) from the wheel hub and neither bar should be able to move side to side.

3. Pull the parking-brake lever down to engage it.

**Note:** The bars should slide into the notches in the wheel hub.

4. If the brake bars move, are too close to the wheel when disengaged, or do not fully engage the slots in the wheel hub when engaged, correct it by adjusting the 2 adjustment nuts on the cable ([Figure 12](#)).



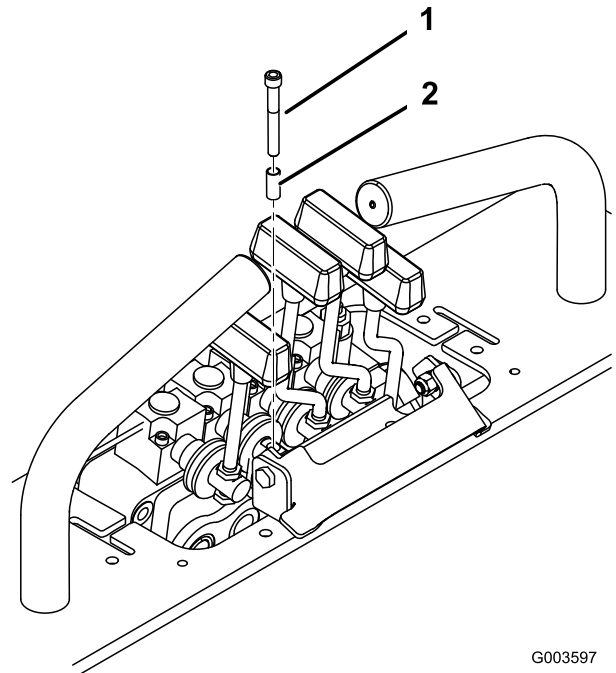
G003566

g003566

Figure 18

1. Loader-valve lock
2. Self-tapping bolts (1/4 x 5/8 inch)

2. Remove the bolt securing the left lever and replace it with the bolt (1/4 x 2 inches) and the spacer ([Figure 19](#)).



G003597

g003597

Figure 19

1. Bolt (1/4 x 2 inches)
2. Spacer

# 8

## Installing the Loader-Valve Lock

Parts needed for this procedure:

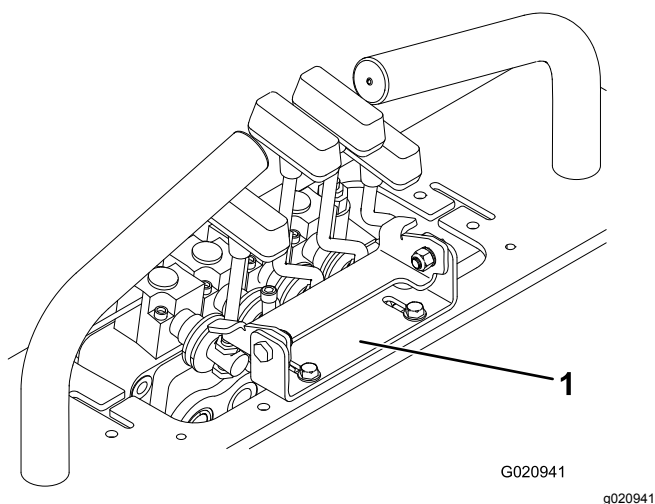
1	Loader-valve lock assembly
2	Self-tapping bolts (1/4 x 5/8 inch)
1	Bolt (1/4 x 2 inches)
1	Spacer

### Procedure

1. Using 2 self-tapping bolts (1/4 x 5/8 inch), loosely install the loader-valve lock behind the control levers ([Figure 18](#)).

**Note:** The loader valve lock should be able to slide forward and backward in the slots.

3. Rotate the loader-valve lock rearward as shown in [Figure 20](#).



**Figure 20**

1. Loader-valve lock

4. Slide the loader-valve lock rearward until it contacts the loader arm and attachment-tilt levers.
5. Tighten the self-tapping bolts (1/4 x 5/8 inch) to secure the loader valve lock.
6. Push forward on the loader arm and attachment-tilt levers.

**Note:** They should not move forward at all.

**Note:** If they do, loosen the self-tapping bolts (1/4 x 5/8 inch) and repeat steps [4](#) through [6](#).

**Important:** You will need to move the levers rearward to engage or disengage the loader-valve lock. The loader-valve lock must touch the levers when it is down and the levers are released.

# 9

## Installing the CE-Compliant Decals

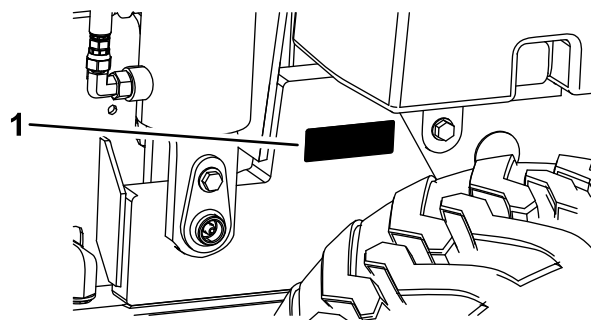
**Parts needed for this procedure:**

- |   |                      |
|---|----------------------|
| 1 | CE-information decal |
|---|----------------------|

## Procedure

Install the decals on the left side of the machine, near the rear tire.

1. Clean the area where you will install the decal.
2. Dampen the area with water or mildly-soapy water.
3. Peel the decal from the backing and install it in place.
4. Squeegee across the surface of the decal, starting at the center of the decal and working toward the edges using overlapping strokes.



**Figure 21**

1. CE-information decal

**Notes:**



**Count on it.**