



Count on it.

Form No. 3408-298 Rev C

Parts Catalog

Canopy Kit

4-passenger Workman® GTX Utility Vehicle

Model No. 07141—Serial No. 400000000 and Up



Ordering Replacement Parts

To order replacement parts, please supply the part number, the quantity, and the description of each part desired.

Understanding Reference Numbers

Each identified part in an illustration has a reference number. The reference number for a part also appears in the parts list, along with other information about the part.

This catalog uses two special reference number formats, one to indicate parts in a service assembly and another to indicate the quantity of a given part in an illustration.

Service Assembly Reference Numbers

Parts in service assemblies have reference numbers in the form a:b. The a represents the reference number of the entire service assembly and the b represents a sequential number unique to each part within the service assembly.

For example, a wheel assembly might be identified by reference number 6, the tire by 6:1, the valve by 6:2, and the wheel by 6:3. When you order the assembly identified by reference number 6, you receive all parts identified by reference numbers 6:1, 6:2, and 6:3. However, you may also order any part individually. Reference numbers of this type appear in illustration and in parts lists.

Reference Numbers Indicating Quantity

In an illustration, if a reference number indicates more than one part, the reference number has the form nX y. The n represents the quantity of the part, the X is the multiplication symbol, and the y represents the reference number.

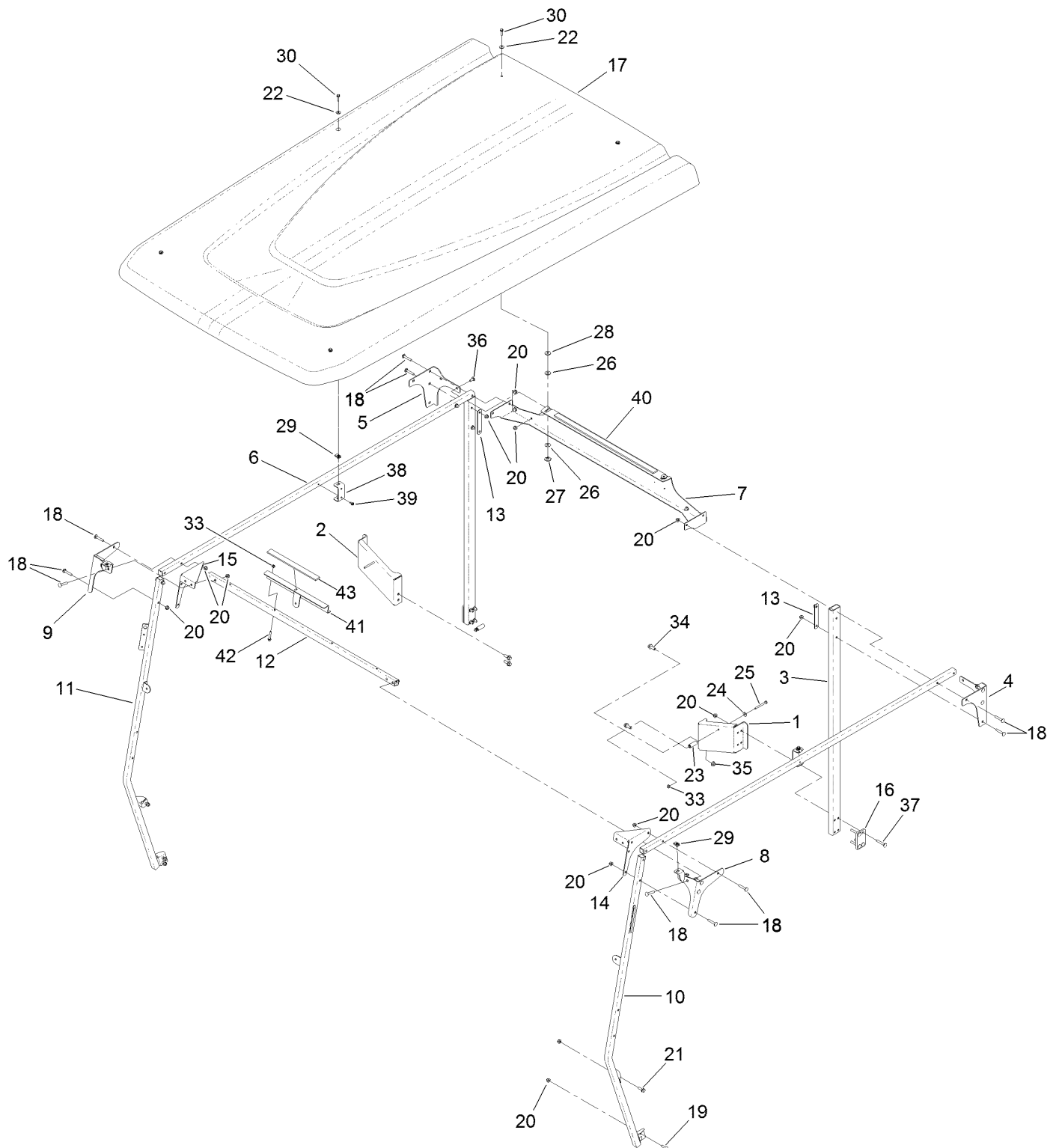
For example, in an illustration, the reference number 2X 37 means that two of the parts identified by reference number 37 are indicated.

Contents

Canopy Assembly 4

Attachments and Accessories 6

Canopy Assembly



Canopy Assembly (continued)

<i>Ref.</i>	<i>Part Number</i>	<i>Qty.</i>	<i>Description</i>	<i>Ref.</i>	<i>Part Number</i>	<i>Qty.</i>	<i>Description</i>
1	133-1052-03	1	Bracket-Loop, LH	22	119-0872	6	Washer-Sealing, Bonded
2	133-1051-03	1	Bracket-Loop, RH	23	133-0835	2	Spacer
3	133-1046-03	2	Tube	24	98-3499	2	Washer-Flat
4	133-1047-03	1	Plate-Rear, LH	25	321-15	2	Screw-HH
5	133-1048-03	1	Plate-Rear, RH	26	93-1633	4	Washer
6	133-0822-03	2	Tube-Crosslink	27	133-1098	2	Bushing-Flange, Hex
7	133-1099-03	1	Crosslink-Rear	28	1-603716	2	Washer-Friction
8	133-1060-03	1	Mount-Front, LH	29	107069	4	Clip
9	133-1061-03	1	Mount-Front, RH	30	120-4654	6	Screw-HHF
10	133-1064-03	1	Support-Windshield, LH	33	104-7201	4	Nut-HF
11	133-1065-03	1	Support-Windshield, RH	34	3234-42	4	Screw-HHF
12	136-1757-03	1	Crosslink-Front	35	104-8301	4	Nut-HF, NI
13	133-1063-03	2	Plate-Backing	36	3230-23	4	Screw-CARR
14	136-1759-03	1	Corner-Gusset, LH	37	3230-6	8	Screw-CARR
15	136-1758-03	1	Corner-Gusset, RH	38	136-1860	2	Bracket-Support, Roof
16	133-1053-03	2	Plate-Mounting	39	32104-17	2	Screw-HWH
17	133-1102	1	Sunshade Gtx	40	136-1756	1	Foam-Pad
18	116-0629	20	Screw-CARR	41	136-2120-03	1	Support-Front
19	3230-22	4	Screw-CARR	42	94-5781	2	Screw-HHF
20	104-8300	38	Nut-HF, NI	43	136-2211	1	Foam-Pad
21	3234-29	2	Screw-HHF				

Attachments and Accessories

For 07141 Canopy Kit 4-passenger Workman GTX Utility Vehicle

Product Name	Model/Part
Windshield Kit.....	07151
Exterior Mirror Kit.....	130-5448
Interior Mirror Kit.....	130-5449
Wide Angle Mirror Kit.....	133-1009
Wide Angle Mirror Kit.....	133-1038

Notes:



Count on it.