



Form No. 3403-915 Rev B

Count on it.

Parts Catalog

Canopy Kit

Workman® GTX Utility Vehicle

Model No. 07140—Serial No. 316000001 and Up



Ordering Replacement Parts

To order replacement parts, please supply the part number, the quantity, and the description of each part desired.

Understanding Reference Numbers

Each identified part in an illustration has a reference number. The reference number for a part also appears in the parts list, along with other information about the part.

This catalog uses two special reference number formats, one to indicate parts in a service assembly and another to indicate the quantity of a given part in an illustration.

Service Assembly Reference Numbers

Parts in service assemblies have reference numbers in the form a:b. The a represents the reference number of the entire service assembly and the b represents a sequential number unique to each part within the service assembly.

For example, a wheel assembly might be identified by reference number 6, the tire by 6:1, the valve by 6:2, and the wheel by 6:3. When you order the assembly identified by reference number 6, you receive all parts identified by reference numbers 6:1, 6:2, and 6:3. However, you may also order any part individually. Reference numbers of this type appear in illustration and in parts lists.

Reference Numbers Indicating Quantity

In an illustration, if a reference number indicates more than one part, the reference number has the form nX y. The n represents the quantity of the part, the X is the multiplication symbol, and the y represents the reference number.

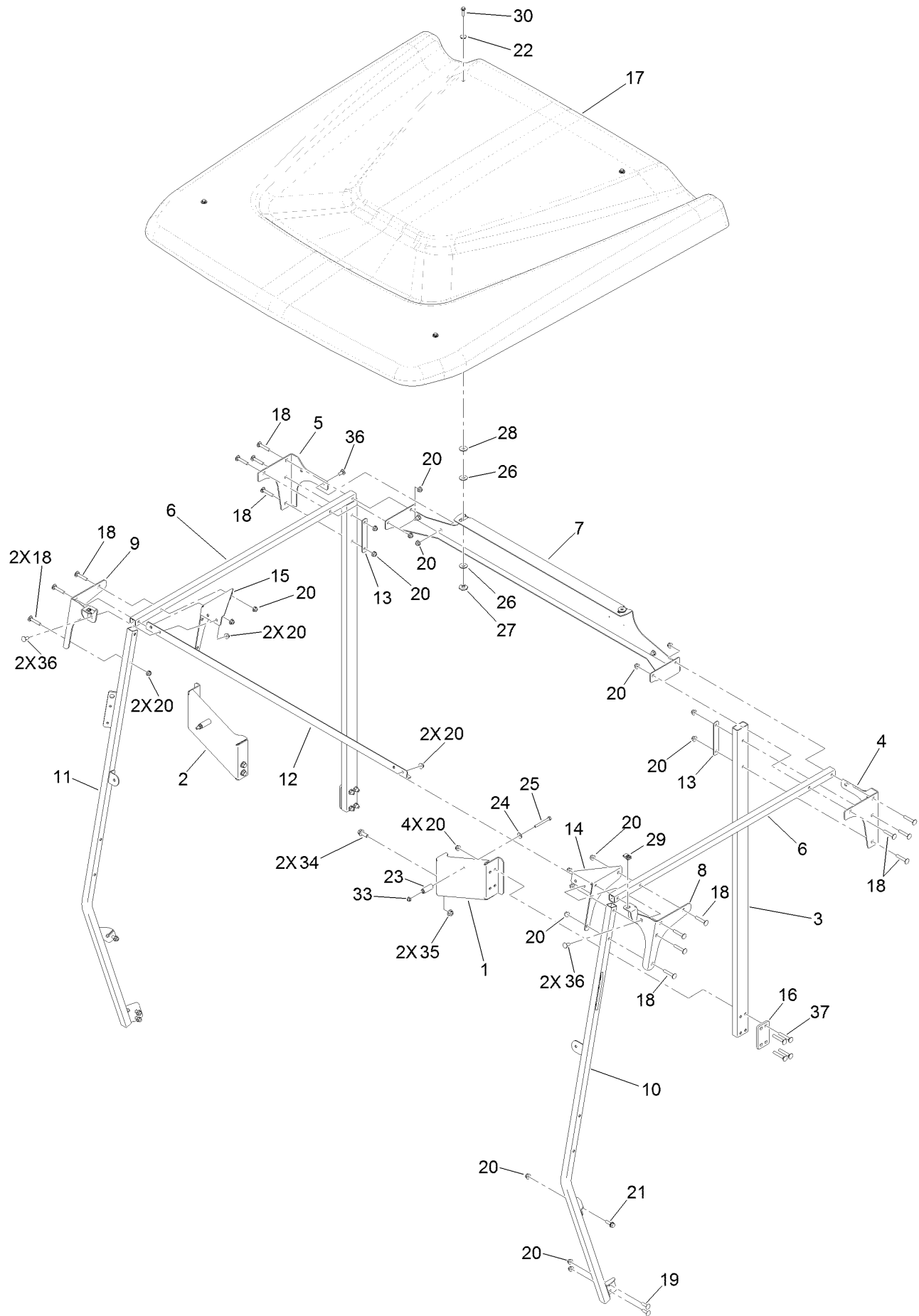
For example, in an illustration, the reference number 2X 37 means that two of the parts identified by reference number 37 are indicated.

Contents

Canopy Assembly 4

Attachments and Accessories 6

Canopy Assembly



Canopy Assembly (continued)

<i>Ref.</i>	<i>Part Number</i>	<i>Qty.</i>	<i>Description</i>	<i>Ref.</i>	<i>Part Number</i>	<i>Qty.</i>	<i>Description</i>
1	133-1052-03	1	Bracket-Loop, LH	19	3230-22	4	Screw-CARR
2	133-1051-03	1	Bracket-Loop, RH	20	104-8300	38	Nut-HF, NI
3	133-1046-03	2	Tube	21	3234-29	2	Screw-HHF
4	133-1047-03	1	Plate-Rear, LH	22	119-0872	4	Washer-Sealing, Bonded
5	133-1048-03	1	Plate-Rear, RH	23	133-0835	2	Spacer
6	133-0819-03	2	Tube-Crosslink	24	98-3499	2	Washer-Flat
7	133-1099-03	1	Crosslink-Rear	25	321-15	2	Screw-HH
8	133-1060-03	1	Mount-Front, LH	26	93-1633	4	Washer
9	133-1061-03	1	Mount-Front, RH	27	133-1098	2	Bushing-Flange, Hex
10	133-1064-03	1	Support-Windshield, LH	28	1-603716	2	Washer-Friction
11	133-1065-03	1	Support-Windshield, RH	29	107069	2	Clip
12	133-1062-03	1	Crosslink-Front	30	120-4654	4	Screw-HHF
13	133-1063-03	2	Plate-Backing	33	104-7201	2	Nut-HF
14	133-1069-03	1	Gusset-Corner, LH	34	3234-42	4	Screw-HHF
15	133-1070-03	1	Gusset-Corner, RH	35	104-8301	4	Nut-HF, NI
16	133-1053-03	2	Plate-Mounting	36	3230-23	8	Screw-CARR
17	132-3480	1	Sunshade	37	3230-6	8	Screw-CARR
18	116-0629	16	Screw-CARR				

Attachments and Accessories

For 07140 Canopy Kit Workman GTX Utility Vehicle

Product Name	Model/Part
Windshield Kit.....	07151
Exterior Mirror Kit.....	130-5448
Interior Mirror Kit.....	130-5449
Wide Angle Mirror Kit.....	133-1009
Wide Angle Mirror Kit.....	133-1038

Notes:



Count on it.