



Form No. 3408-297 Rev C

Count on it.

Parts Catalog

Canopy Kit

Workman® GTX Utility Vehicle

Model No. 07140—Serial No. 400000000 and Up



Ordering Replacement Parts

To order replacement parts, please supply the part number, the quantity, and the description of each part desired.

Understanding Reference Numbers

Each identified part in an illustration has a reference number. The reference number for a part also appears in the parts list, along with other information about the part.

This catalog uses two special reference number formats, one to indicate parts in a service assembly and another to indicate the quantity of a given part in an illustration.

Service Assembly Reference Numbers

Parts in service assemblies have reference numbers in the form a:b. The a represents the reference number of the entire service assembly and the b represents a sequential number unique to each part within the service assembly.

For example, a wheel assembly might be identified by reference number 6, the tire by 6:1, the valve by 6:2, and the wheel by 6:3. When you order the assembly identified by reference number 6, you receive all parts identified by reference numbers 6:1, 6:2, and 6:3. However, you may also order any part individually. Reference numbers of this type appear in illustration and in parts lists.

Reference Numbers Indicating Quantity

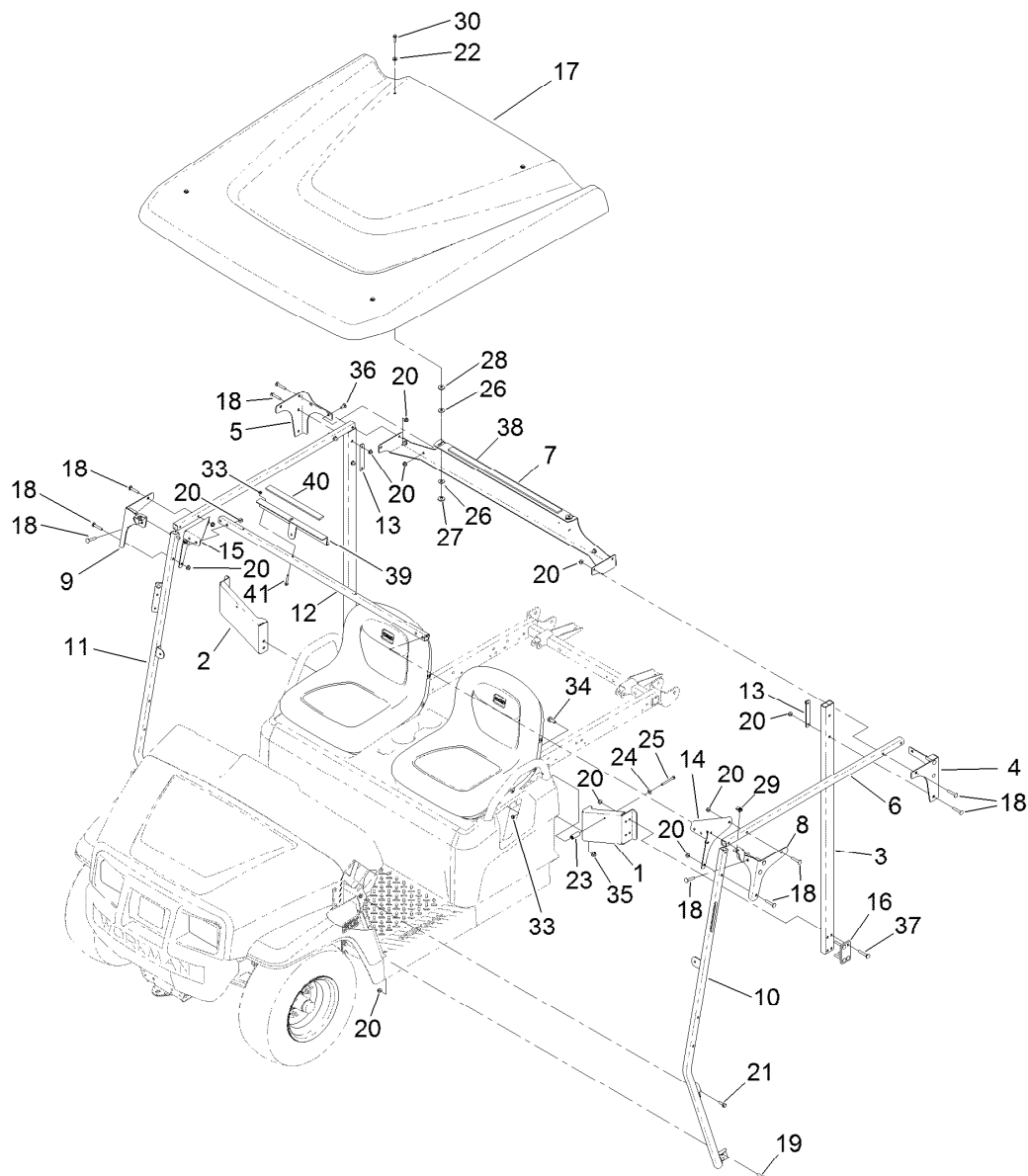
In an illustration, if a reference number indicates more than one part, the reference number has the form nX y. The n represents the quantity of the part, the X is the multiplication symbol, and the y represents the reference number.

For example, in an illustration, the reference number 2X 37 means that two of the parts identified by reference number 37 are indicated.

Contents

Canopy Assembly 4

Attachments and Accessories 5



Canopy Assembly

Ref.	Part Number	Qty.	Description
1	133-1052-03	1	Bracket-Loop, LH
2	133-1051-03	1	Bracket-Loop, RH
3	133-1046-03	2	Tube
4	133-1047-03	1	Plate-Rear, LH
5	133-1048-03	1	Plate-Rear, RH
6	133-0819-03	2	Tube-Crosslink
7	133-1099-03	1	Crosslink-Rear
8	133-1060-03	1	Mount-Front, LH
9	133-1061-03	1	Mount-Front, RH
10	133-1064-03	1	Support-Windshield, LH
11	133-1065-03	1	Support-Windshield, RH
12	136-1757-03	1	Crosslink-Front
13	133-1063-03	2	Plate-Backing
14	136-1759-03	1	Corner-Gusset, LH
15	136-1758-03	1	Corner-Gusset, RH
16	133-1053-03	2	Plate-Mounting
17	133-1101	1	Sunshade
18	116-0629	20	Screw-CARR
19	3230-22	4	Screw-CARR
20	104-8300	38	Nut-HF, NI

Ref.	Part Number	Qty.	Description
21	3234-29	2	Screw-HHF
22	119-0872	4	Washer-Sealing, Bonded
23	133-0835	2	Spacer
24	98-3499	2	Washer-Flat
25	321-15	2	Screw-HH
26	93-1633	4	Washer
27	133-1098	2	Bushing-Flange, Hex
28	1-603716	2	Washer-Friction
29	107069	2	Clip
30	120-4654	4	Screw-HHF
33	104-7201	4	Nut-HF
34	3234-42	4	Screw-HHF
35	104-8301	4	Nut-HF, NI
36	3230-23	4	Screw-CARR
37	3230-6	8	Screw-CARR
38	136-1756	1	Foam-Pad
39	136-2120-03	1	Support-Front
40	136-2211	1	Foam-Pad
41	94-5781	2	Screw-HHF

Attachments and Accessories

For 07140 Canopy Kit Workman GTX Utility Vehicle

Product Name	Model/Part
Windshield Kit.....	07151
Exterior Mirror Kit.....	130-5448
Interior Mirror Kit.....	130-5449
Wide Angle Mirror Kit.....	133-1009
Wide Angle Mirror Kit.....	133-1038

Notes:

Notes:



Count on it.