



Trencher Head Dingo[®] Attachment

Model No. 22459—210000001 and Up

Parts Catalog

Ordering Replacement Parts

To order replacement parts, please supply: the part number, the quantity, and the description of each part desired.

Understanding Reference Numbers

Each identified part in an illustration has a reference number. The reference number for a part also appears in the parts list, along with other information about the part.

This catalog uses two special reference number formats, one to indicate parts in a service assembly and another to indicate the quantity of a given part in an illustration.

Service Assembly Reference Numbers

Parts in service assemblies have reference numbers in the form **a:b**. The **a** represents the reference number of the entire service assembly and the **b** represents a sequential number unique to each part within the service assembly.

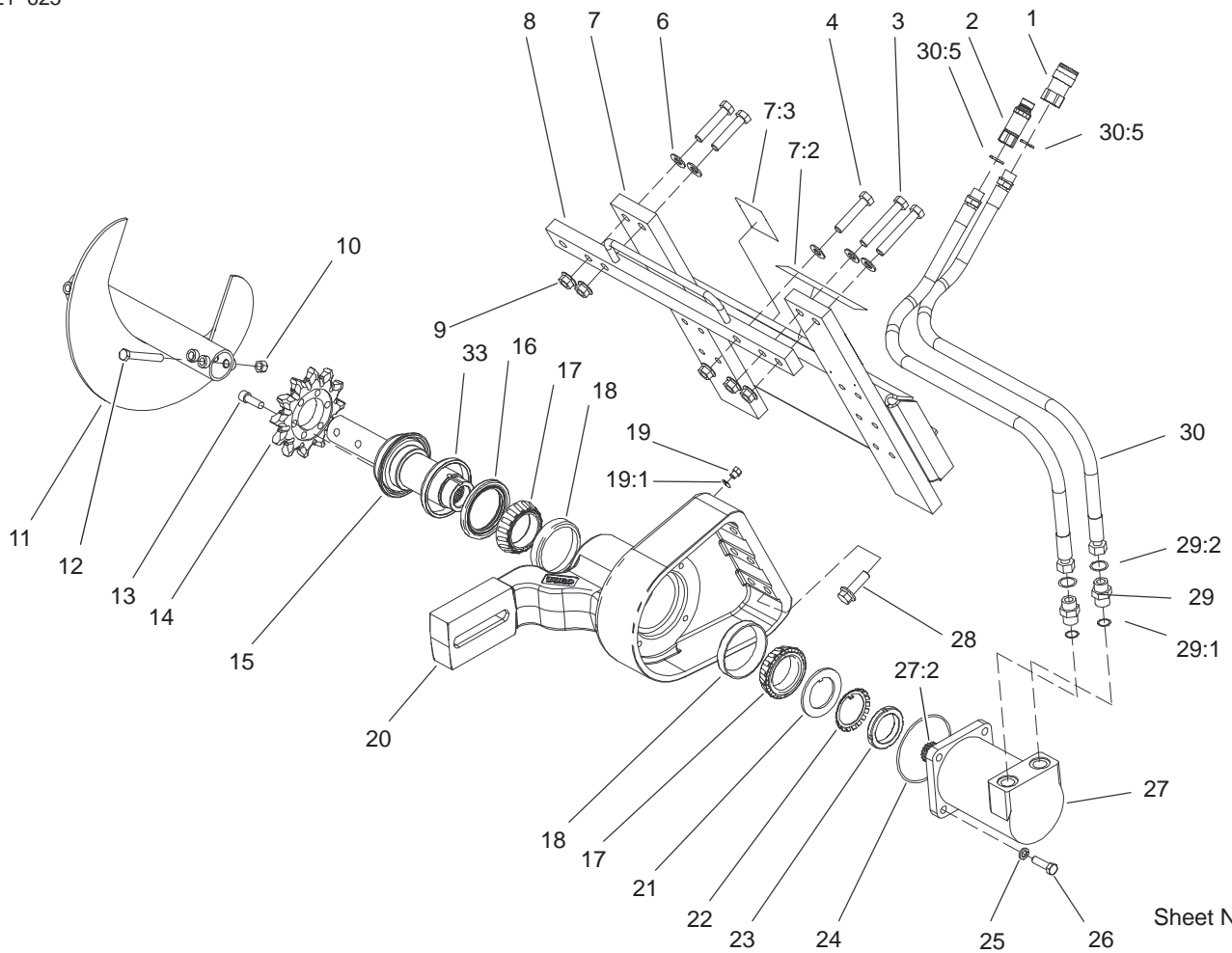
For example, a wheel assembly might be identified by reference number **6**, the tire by **6:1**, the valve by **6:2**, and the wheel by **6:3**. When you order the assembly identified by reference number **6**, you receive all parts identified by reference numbers **6:1**, **6:2**, and **6:3**. However, you may also order any part individually.

Reference numbers of this type appear in illustrations and in part lists.

Reference Numbers Indicating Quantity

In an illustration, if a reference number indicates more than one part, the reference number has the form **nX y**. The **n** represents the quantity of the part, the **X** is the multiplication symbol, and the **y** represents the reference number.

For example, in an illustration, the reference number **2X 37** means that two of the parts identified by reference number **37** are indicated.



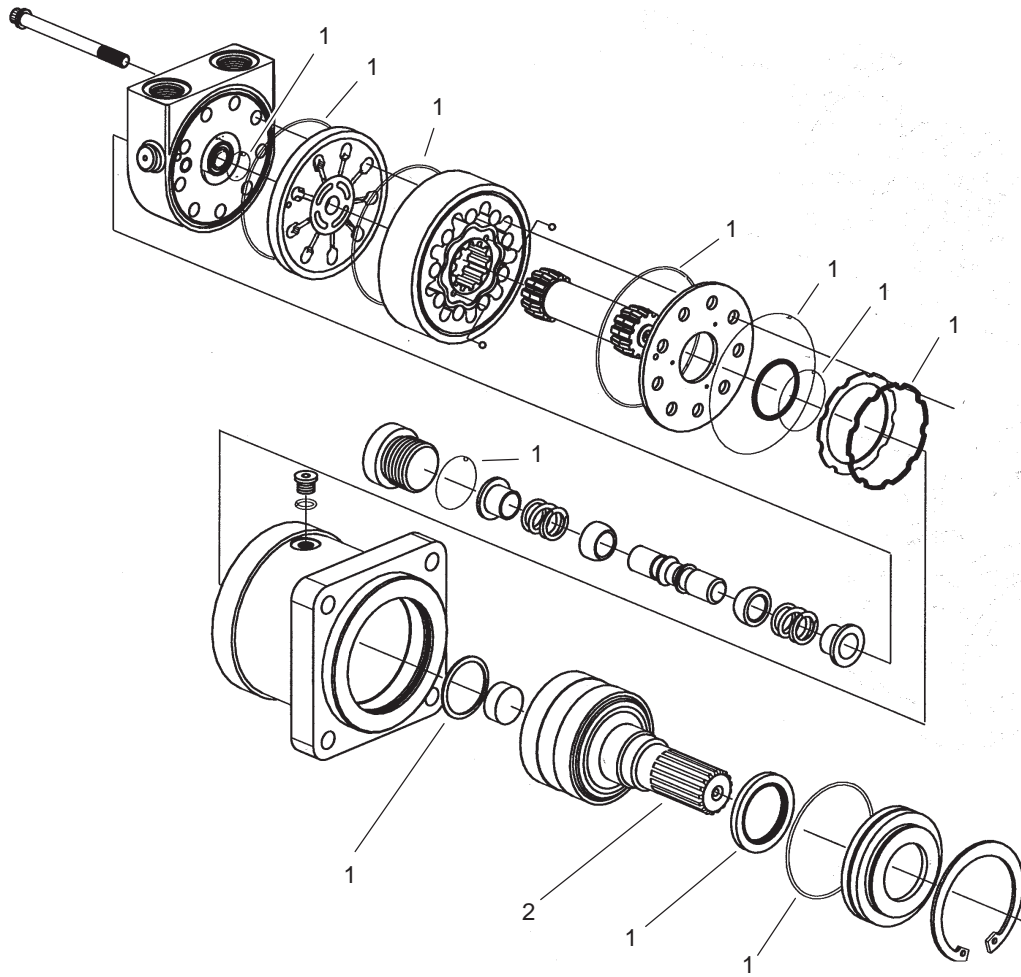
Sheet No.: 0

Trencher Head Assembly

Ref. No.	Part No.	Qty.	Description
1	100-4234	1	Coupler-Face, Flush
*1:1	100-6119	1	Kit-Seal
2	100-4701	1	Nipple-Connect, Pressure
*2:1	100-6120	1	Kit-Seal
3	104-5877	2	Screw-HH
4	104-5895	3	Screw-HH
6	3256-27	5	Washer-Flat
7	104-1938	1	Mount Assembly
7:2	99-9952	1	Decal-Danger
7:3	99-9953	1	Decal-Danger
8	104-5894-03	1	Crossbar ASM
9	32128-50	5	Nut - Flange
10	3296-23	1	Nut-Lock, NI
11	104-5912-03	1	Auger ASM,
12	325-35	1	Screw-HH
13	3274-4	6	Screw-HSH
14	104-1964	1	Sprocket-Trencher
15	104-1969	1	Shaft - Trencher
16	104-1967	1	Seal-Shaft
17	104-1966	2	Cone-Bearing
18	104-1965	2	Cup-Bearing
19	353-990	1	Plug
19:1	237-78	1	O-Ring
20	104-1931	1	Mount-Boom
21	104-1972	1	Washer-Tongued

Ref. No.	Part No.	Qty.	Description
22	104-5915	1	Lockwasher-Bearing
23	104-1973	1	Locknut-Bearing
24	104-1920	1	O-Ring
25	3253-7	4	Washer-Lock
26	325-7	4	Screw-HH
27	104-1946	1	Motor-HYD
28	104-5870	6	Screw
29	340-8	2	Adapter
29:1	237-65	1	O-Ring
29:2	237-81	1	O-Ring
30	104-1932	2	Hose ASM, HYD
30:5	237-80	1	O-Ring
33	104-5935	1	Spacer

* Not illustrated



Sheet No.: A1
C-3010

Hydraulic Motor Assembly No. 104-1946

Ref. No.	Part No.	Qty.	Description
1	104-5899	1	Kit-Seal
2	104-5900	1	Shaft-Splined

Ref. No.	Part No.	Qty.	Description

