



Form No. 3423-450 Rev A

Count on it.

Parts Catalog

Manual Blade

**Sand Pro®/Infield Pro® 3040 and 5040
Traction Unit**

Model No. 08714—Serial No. 400900001 and Up



Ordering Replacement Parts

To order replacement parts, please supply the part number, the quantity, and the description of each part desired.

Understanding Reference Numbers

Each identified part in an illustration has a reference number. The reference number for a part also appears in the parts list, along with other information about the part.

This catalog uses two special reference number formats, one to indicate parts in a service assembly and another to indicate the quantity of a given part in an illustration.

Service Assembly Reference Numbers

Parts in service assemblies have reference numbers in the form a:b. The a represents the reference number of the entire service assembly and the b represents a sequential number unique to each part within the service assembly.

For example, a wheel assembly might be identified by reference number 6, the tire by 6:1, the valve by 6:2, and the wheel by 6:3. When you order the assembly identified by reference number 6, you receive all parts identified by reference numbers 6:1, 6:2, and 6:3. However, you may also order any part individually. Reference numbers of this type appear in illustration and in parts lists.

Reference Numbers Indicating Quantity

In an illustration, if a reference number indicates more than one part, the reference number has the form nX y. The n represents the quantity of the part, the X is the multiplication symbol, and the y represents the reference number.

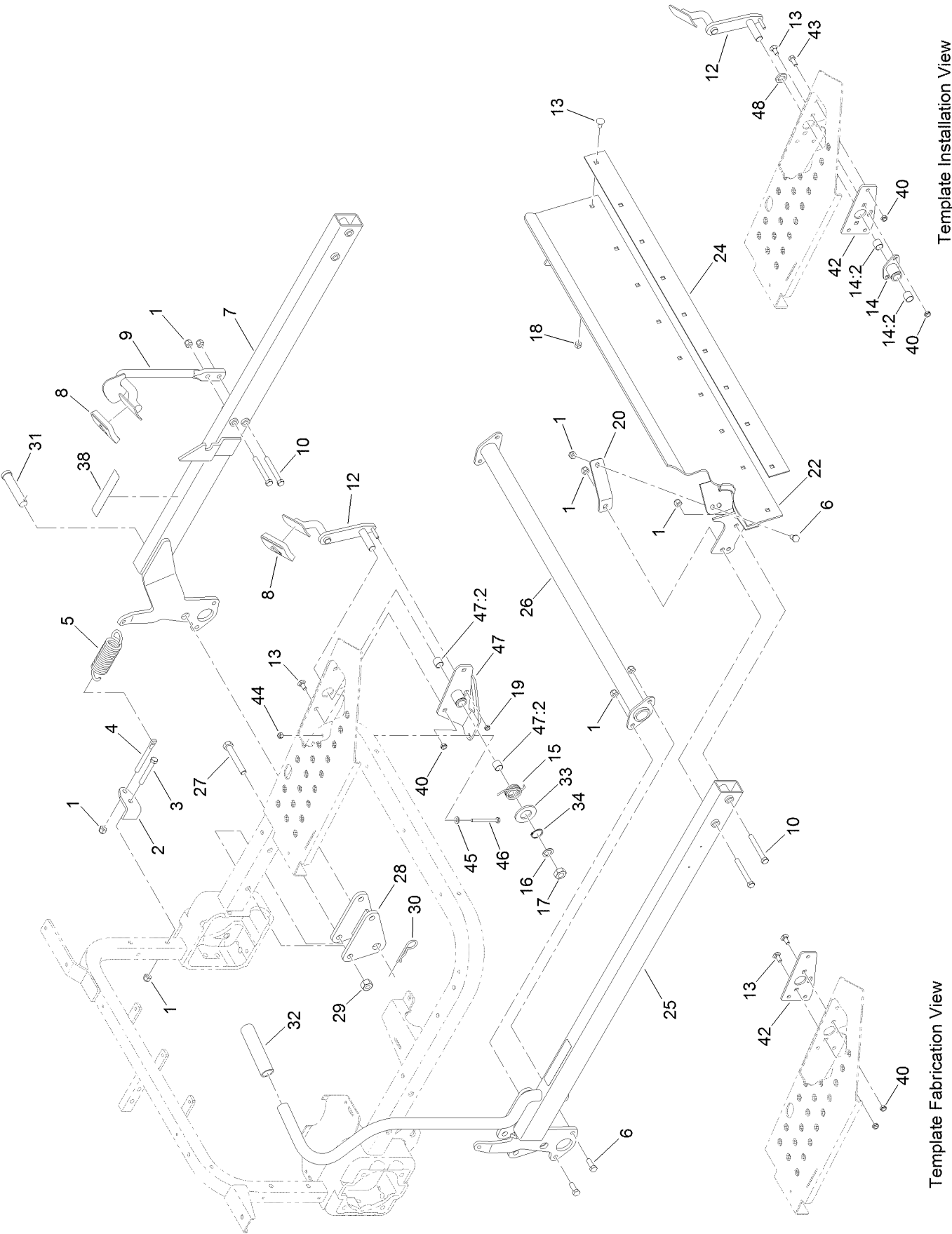
For example, in an illustration, the reference number 2X 37 means that two of the parts identified by reference number 37 are indicated.

Contents

Manual Blade Assembly 4

Attachments and Accessories 6

Manual Blade Assembly



Manual Blade Assembly (continued)

<i>Ref.</i>	<i>Part Number</i>	<i>Qty.</i>	<i>Description</i>	<i>Ref.</i>	<i>Part Number</i>	<i>Qty.</i>	<i>Description</i>
1	3296-39	16	Nut-Lock, NI	24	108-5406-03	1	Plate-Wear
2	108-5414	2	Bracket-Spring	25	112-7156-03	1	RH Lift Arm ASM
3	323-13	2	Screw-HH	26	108-5402-03	1	Torsion Tube ASM
4	108-5413	2	Rod-Spring	27	325-13	4	Screw-HH
5	108-5412	2	Spring-Extension	28	108-5427-03	2	Mount ASM
6	323-6	6	Screw-HH	29	3296-25	4	Nut-Lock, NI
7	112-7157-03	1	LH Lift Arm ASM	30	3290-343	2	Pin-Hair
8	74-9100	2	Pad-Pedal, Forward	31	108-2800	2	Pin-Clevis
9	108-5429-03	1	Foot Pedal ASM	32	104-9838	1	Grip-Foam
10	323-14	6	Screw-HH	33	3256-62	1	Washer-Flat
12	108-5418-03	1	Lock Lever ASM	34	32151-29	1	Ring-Retaining
13	3230-1	11	Bolt-CARR	38	93-9879	2	Decal-Warning
14	108-5421	1	Plate ASM	40	3296-47	4	Nut-Lock, NI
14:2	256-311	2	Bushing-Split	42	136-7321-01	1	Bracket-Pivot, Plow
15	108-5424	1	Spring-Torsion	43	322-3	2	Screw-HH
16	3256-69	1	Washer-Flat	44	3296-42	1	Nut-Lock, NI
17	3296-33	1	Nut-Lock, NI	45	3256-22	1	Washer-Flat
18	3296-29	9	Nut-Lock, NI	46	321-14	1	Screw-HH
19	3296-56	1	Nut-Lock, NI	47	136-7349	1	Hub ASM
20	114-0644-03	2	Plate-Brace	47:2	256-311	2	Bushing-Split
22	115-5642-03	1	Blade ASM	48	63-9710	1	Spacer-Bearing

Attachments and Accessories

For 08714 Manual Blade Sand Pro/Infield Pro 3040 and 5040 Traction Unit

Product Name	Model/Part
60in Blade Kit.....	115-5644

Notes:



Count on it.