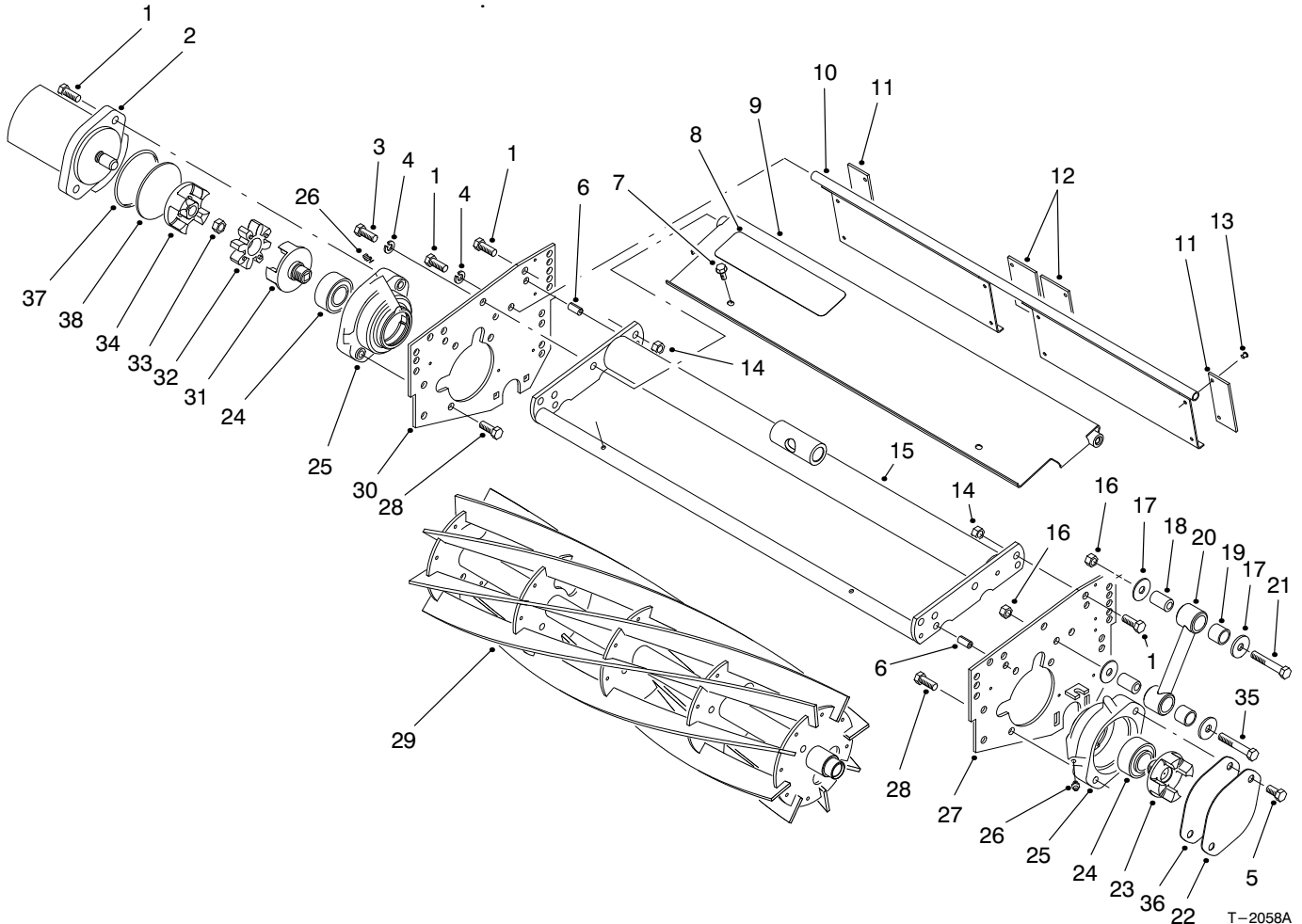




MODEL NO. 03466-90001 & UP
MODEL NO. 03467-90001 & UP

**PARTS
CATALOG**

**5 BLADE & 8 BLADE CUTTING UNITS
(For Reelmaster® 2600D)**



T-2058A

REEL ASSEMBLY

Ref. No.	Part No.	Description	No. Used
1	323-6	Screw-HH	10
†2		Asm-Hydraulic Motor	1
3	323-7	Screw-HH	2
4	3253-5	Washer-Lock	4
5	323-2	Screw-HH	2
6	32121-36	Pin-Roll	4
7	32144-10	Screw-HFH	2
8	93-8064	Decal-Shield	1
8	94-4585	Decal-Shield (Japan)	1
9	94-5053	Asm-Front Grass Guard (Incl. Ref. #8)	1
10	94-4969	Asm-Rear Grass Guard (Incl. Ref. #11-13)	1
11	61-3280	Cover-Rubber Side	2
12	61-3290	Cover-Rubber Center	2
13	700382	Rivet	12
14	3296-39	Nut-Lock	6

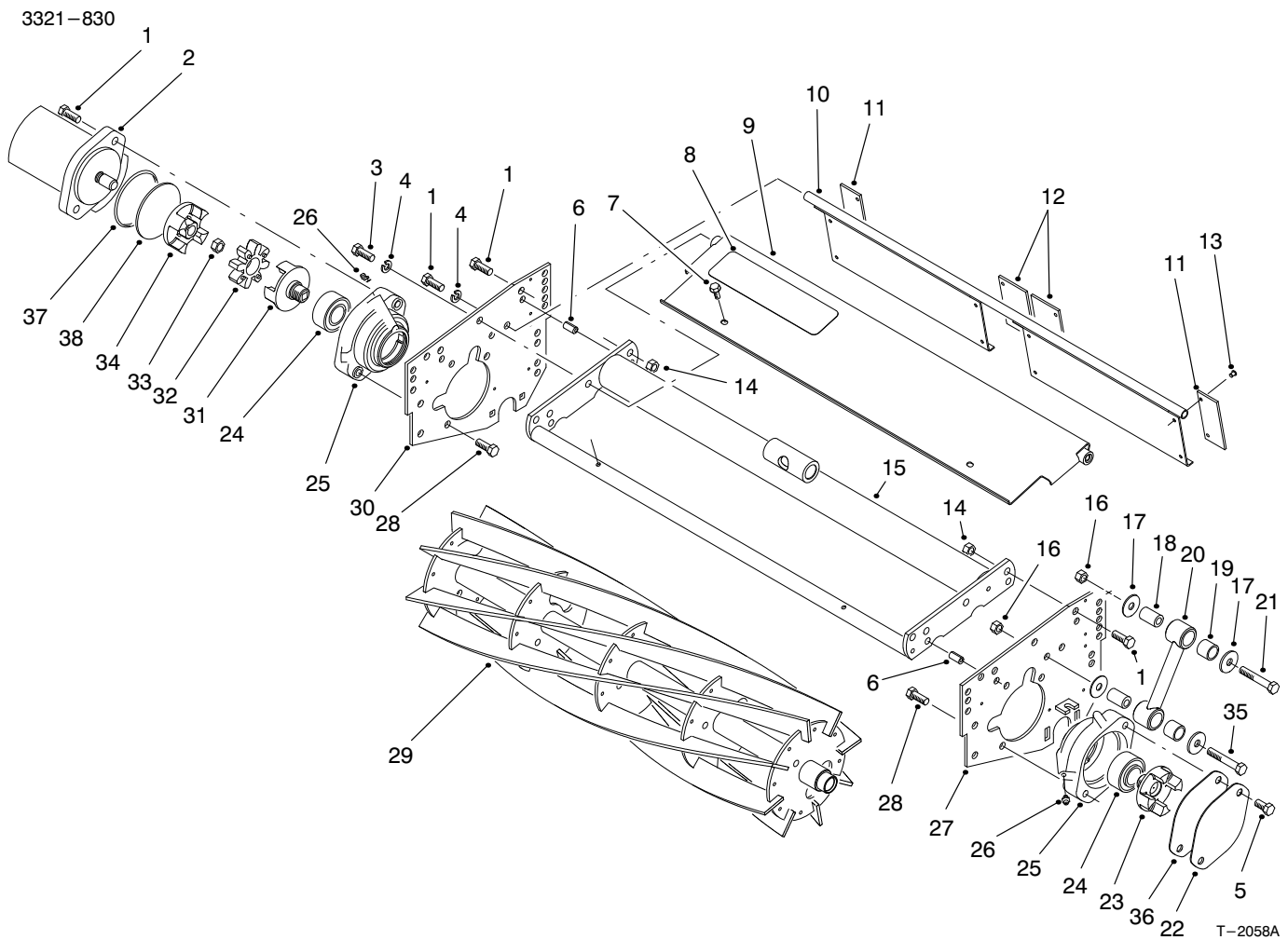
Ref. No.	Part No.	Description	No. Used
15	94-4964	Frame-Cutting Unit	1
16	32128-36	Nut-HFH	8
17	93-8806	Washer	16
18	93-6981	Spacer	8
19	94-8945	Bushing	8
20	93-6980	Link	4
21	323-11	Screw-HH	4
22	93-6960	Cover-Bearing	1
23	93-8826	Coupling-Male LH	1
24	88-7880	Bearing-Ball	2
25	99-3404	Housing-Bearing	2
26	302-5	Fitting-Grease	2
27	94-3697	Plate-Side LH	1
28	323-4	Screw-HH	4
29	99-3485	Reel-8 Blade	1
*	99-3484	Reel-5 Blade	1
30	94-3695	Plate-Side RH	1

* Not Illustrated

† Supplied with Traction Unit

© The TORO Company - 1998
All Rights Reserved

TPS

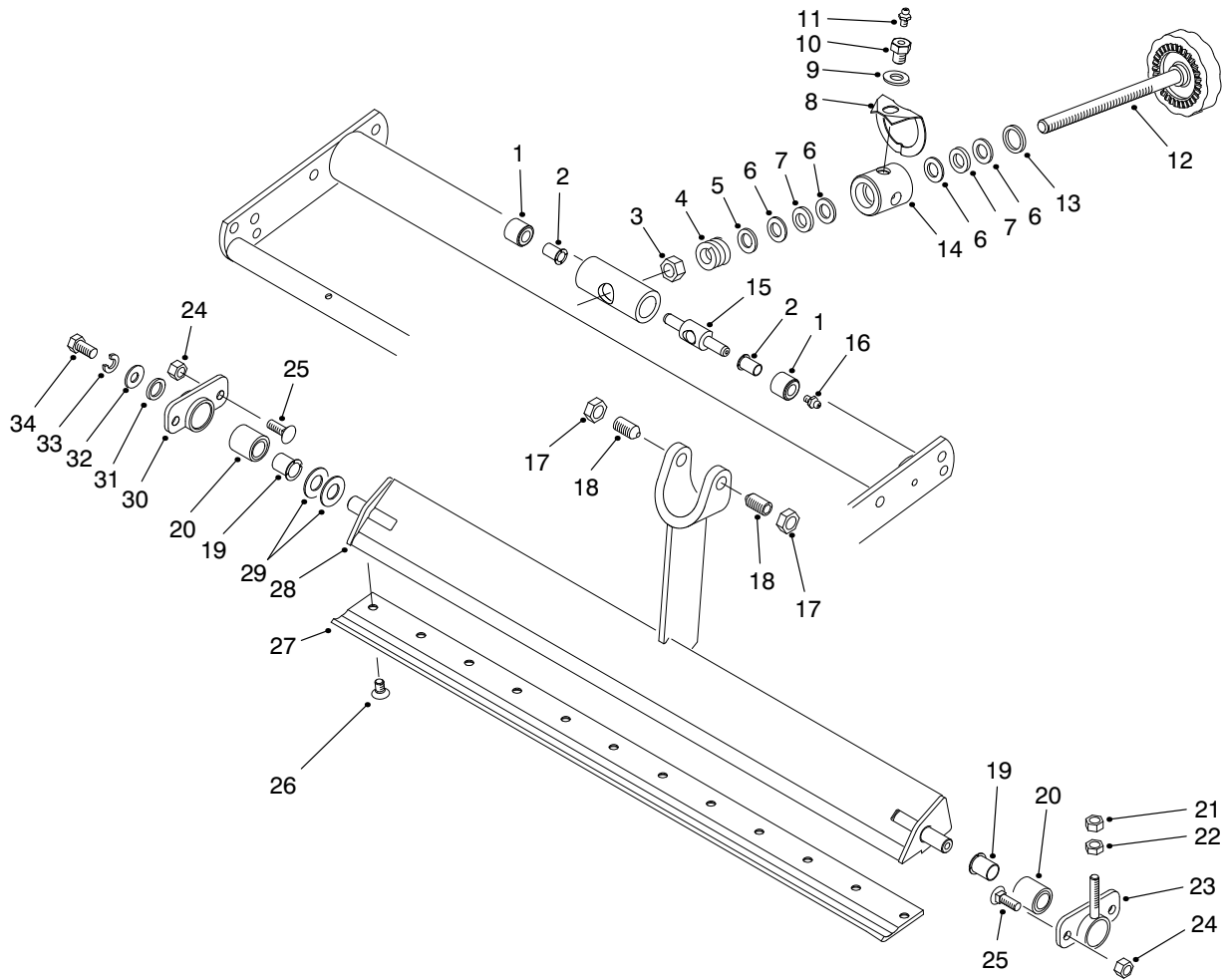


REEL ASSEMBLY (Continued)

Ref. No.	Part No.	Description	No. Used
31	93-8825	Coupling—Male RH	1
32	93-8827	Spider—Coupling	1
†33	32128-48	Nut—HFH	1
†34		Coupling—Female	1

Ref. No.	Part No.	Description	No. Used
35	323-10	Screw—HH	4
36	94-5979	Gasket	1
37	353-949	O—Ring	1
38	94-2703	Plug	1

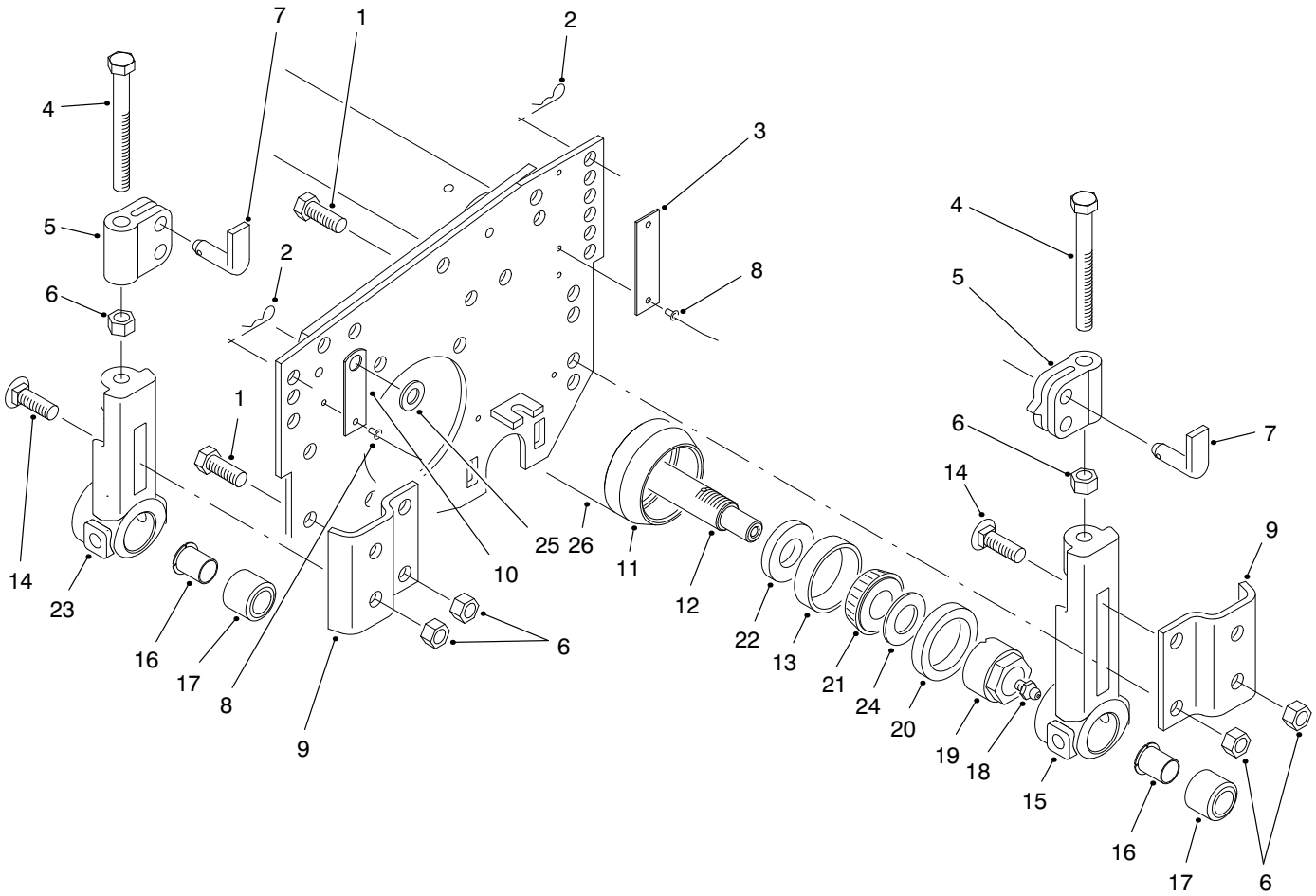
†Supplied with Traction Unit



T-2419-1

BEDBAR & BEDKNIFE ASSEMBLY

Ref. No.	Part No.	Description	No. Used	Ref. No.	Part No.	Description	No. Used
1	62-5510	Asm-Rubber Bushing	2	18	57-5190	Screw-Adjustment	2
2	52-2890	Bushing-Flanged (Nylon)	2	19	56-9520	Bushing-Flanged	2
3	3296-62	Nut-Lock	1	20	56-9510	Asm-Bushing	2
4	57-5270	Spring-Compression	1	21	3296-4	Nut-Lock	1
5	29-8870	Washer	1	22	3219-2	Nut-Lock	1
6	257-5	Washer-Thrust	4	23	93-6855	Housing-Bedbar Adjust.	1
7	257-6	Bearing-Thrust	2	24	3296-29	Nut-Lock	4
8	52-3000	Arm-Spring	1	25	3230-1	Screw-Carriage	4
9	3256-25	Washer-Flat	1	26	57-4910	Screw-Special	12
10	52-2990	Screw-Spring Retainer	1	27	94-5079	Bedknife-7 In. Reel	1
11	302-5	Fitting-Grease	1	28	94-4980	Bedbar	1
12	94-5067	Asm-Handle	1	29	61-1950	Washer-Bedbar	2
13	253-84	Seal	1	30	61-1010	Bedbar Housing	1
14	52-2980	Pivot-Single Point Adjust	1	31	62-7120	Spacer	1
15	57-5260	Pin-Single Point Adjustment	1	32	3256-56	Washer-Flat	1
16	302-18	Fitting-Grease	1	33	3253-4	Washer-Lock	1
17	3218-18	Nut-Jam	2	34	322-3	Screw-HH	1



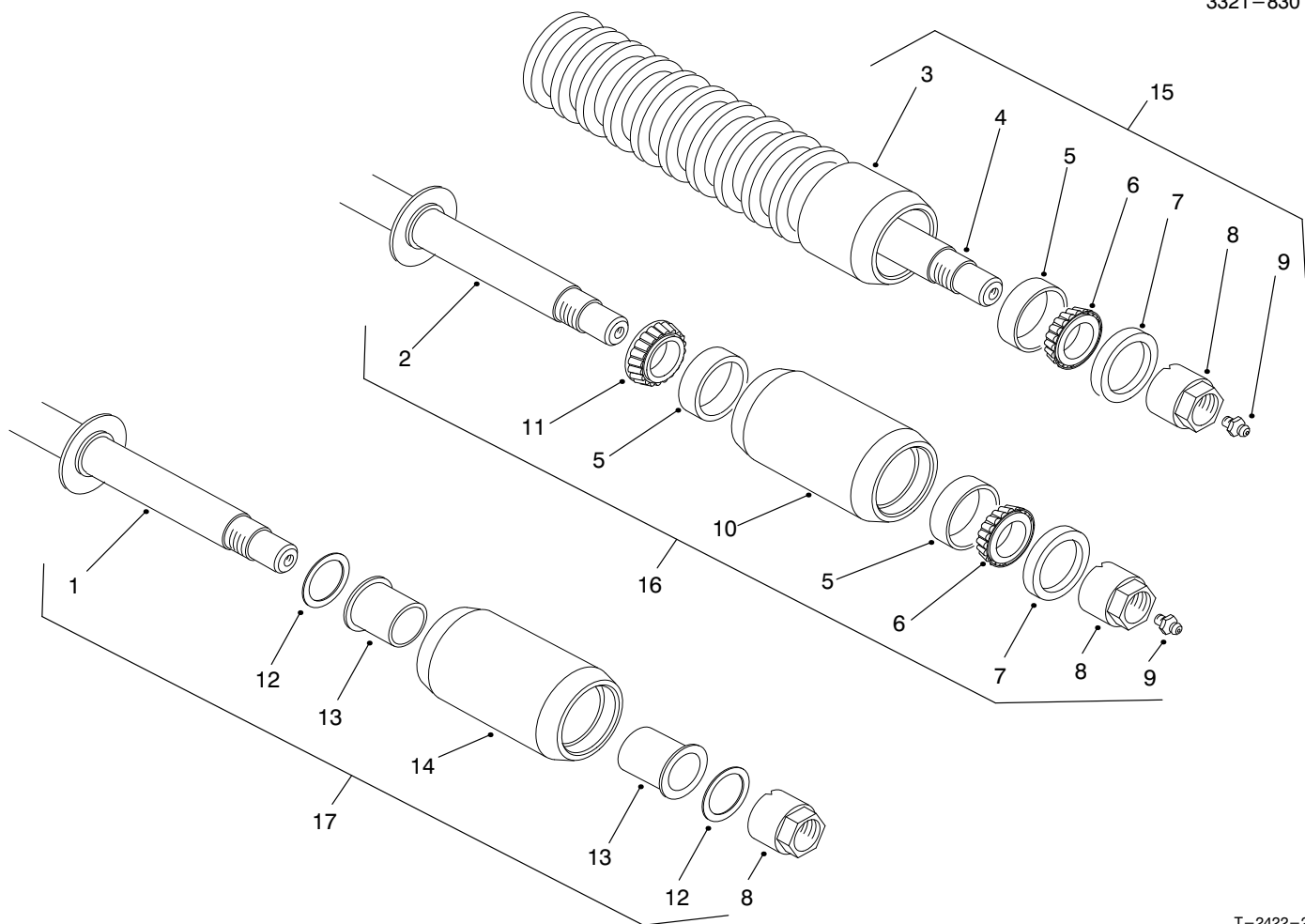
T-0286-2

ROLLER INSTALLATION ASSEMBLY

Ref. No.	Part No.	Description	No. Used
1	323-6	Screw-HH	8
2	3290-467	Cotter-Hairpin	4
3	61-3800	Plate-HOC Rear (Floating Suspension)	2
*	61-3810	Plate-HOC Rear (Fixed Suspension)	2
4	323-57	Screw-HH	4
5	61-0420	Support-HOC	4
6	3296-39	Nut-Lock	16
7	71-3690	Pin-HOC	4
8	3290-55	Rivet-Pop	6
9	61-0910	Bracket-Angle	4
10	61-3790	Plate-HOC Front	2
11	61-0380	Cap-Roller	2
12	94-4983	Shaft-Roller	1
13	254-79	Cup-Bearing	2
14	3231-25	Bolt-Carriage	4

Ref. No.	Part No.	Description	No. Used
15	61-0430	Bracket-Rear	2
16	56-9520	Bushing-Flanged	2
17	56-9510	Bushing	4
18	302-5	Fitting-Grease	2
19	71-3590	Nut-Adjustment	2
20	253-153	Seal-Outer	2
21	254-78	Cone-Bearing	2
22	253-152	Seal-Inner	2
23	61-0440	Bracket-Front	2
24	62-7660	Washer-Shim (not used on all full roller assemblies)	2
25	3256-38	Washer-Flat	2
26	94-4984	Tube-Roller	1
*	94-4982	Asm-Full Roller (Incl. Ref. #11-13, 18-22 & 24)	1

*Not Illustrated



T-2422-2

CUTTING UNIT ROLLER OPTIONS

Ref. No.	Part No.	Description	No. Used	Ref. No.	Part No.	Description	No. Used
1	94-5983	Shaft-Anti-Scalp Roller	1	15	94-4993	Asm-Wiehle Roller (Incl. Ref. #3-9)	1
2	94-5984	Shaft-Sectional Roller	1	16	94-5982	Asm-Sectional Roller (Incl. Ref. #2 & 5-11)	1
3	99-4956	Asm-Wiehle Roller	1	17	94-5981	Asm-Anti-Scalp Roller (Incl. Ref. #1, 8 & 12-14)	1
4	94-4983	Shaft-Full/Wiehle Roller	1	*	94-3664	Kit-Skid	1
5	254-79	Cup-Bearing (Outer)	6	*	03475	Kit-Wiehle Roller (Incl. 3 No. 94-4993)	1
6	254-78	Cone-Bearing (Outer)	4	*	03476	Kit-Sectional Roller (Incl. 3 No. 94-5982)	1
7	253-153	Seal-Outer	4	*	03477	Kit-Anti-Scalp Roller (Incl. 3 No. 94-5981)	1
8	71-3590	Nut-Adjustment	6				
9	302-5	Fitting-Grease	4				
10	76-2400	Roller-Sectional	2				
11	252-112	Cone-Bearing (Inner)	2				
12	3-6498	Washer-Thrust	4				
13	256-117	Bushing-Flanged	4				
14	63-5060	Roller-Anti-Scalp	2				

*Not Illustrated

TORO PART NUMBER INDEX

Part No.	Description	Pg. No.	Ref. No.	Qty.	Part No.	Description	Pg. No.	Ref. No.	Qty.
03475	Kit-Wiehle Roller	5	*	1	94-5053	Asm-Front Grass Guard	1	9	1
03476	Kit-Sectional Roller	5	*	1	94-5067	Asm-Handle	3	12	1
03477	Kit-Anti-Scalp Roller	5	*	1	94-5079	Bedknife-7 In. Reel	3	27	1
700382	Rivet	1	13	12	94-5979	Gasket	2	36	1
3-6498	Washer-Thrust	5	12	4	94-5981	Asm-Anti-Scalp Roller	5	17	1
29-8870	Washer	3	5	1	94-5982	Asm-Sectional Roller	5	16	1
52-2890	Bushing-Flanged (Nylon)	3	2	2	94-5983	Shaft-Anti-Scalp Roller	5	1	1
52-2980	Pivot-Single Point Adjust	3	14	1	94-5984	Shaft-Sectional Roller	5	2	1
52-2990	Screw-Spring Retainer	3	10	1	94-8945	Bushing	1	19	8
52-3000	Arm-Spring	3	8	1	99-3404	Housing-Bearing	1	25	2
56-9510	Asm-Bushing	3	20	2	99-3484	Reel-5 Blade	1	*	1
56-9510	Bushing	4	17	4	99-3485	Reel-8 Blade	1	29	1
56-9520	Bushing-Flanged	4	16	2	99-4956	Asm-Wiehle Roller	5	3	1
56-9520	Bushing-Flanged	3	19	2	252-112	Cone-Bearing (Inner)	5	11	2
57-4910	Screw-Special	3	26	12	253-84	Seal	3	13	1
57-5190	Screw-Adjustment	3	18	2	253-152	Seal-Inner	4	22	2
57-5260	Pin-Single Point Adjustment	3	15	1	253-153	Seal-Outer	5	7	4
57-5270	Spring-Compression	3	4	1	253-153	Seal-Outer	4	20	2
61-0380	Cap-Roller	4	11	2	254-78	Cone-Bearing	4	21	2
61-0420	Support-HOC	4	5	4	254-78	Cone-Bearing (Outer)	5	6	4
61-0430	Bracket-Rear	4	15	2	254-79	Cup-Bearing	4	13	2
61-0440	Bracket-Front	4	23	2	254-79	Cup-Bearing (Outer)	5	5	6
61-0910	Bracket-Angle	4	9	4	256-117	Bushing-Flanged	5	13	4
61-1010	Bedbar Housing	3	30	1	257-5	Washer-Thrust	3	6	4
61-1950	Washer-Bedbar	3	29	2	257-6	Bearing-Thrust	3	7	2
61-3280	Cover-Rubber Side	1	11	2	302-5	Fitting-Grease	5	9	4
61-3290	Cover-Rubber Center	1	12	2	302-5	Fitting-Grease	3	11	1
61-3790	Plate-HOC Front	4	10	2	302-5	Fitting-Grease	4	18	2
61-3800	Plate-HOC Rear	4	3	2	302-5	Fitting-Grease	1	26	2
61-3810	Plate-HOC Rear	4	*	2	302-18	Fitting-Grease	3	16	1
62-5510	Asm-Rubber Bushing	3	1	2	322-3	Screw-HH	3	34	1
62-7120	Spacer	3	31	1	323-2	Screw-HH	1	5	2
62-7660	Washer-Shim (not used)	4	24	2	323-4	Screw-HH	1	28	4
63-5060	Roller-Anti-Scalp	5	14	2	323-6	Screw-HH	1	1	10
71-3590	Nut-Adjustment	5	8	6	323-6	Screw-HH	4	1	8
71-3590	Nut-Adjustment	4	19	2	323-7	Screw-HH	1	3	2
71-3690	Pin-HOC	4	7	4	323-10	Screw-HH	2	35	4
76-2400	Roller-Sectional	5	10	2	323-11	Screw-HH	1	21	4
88-7880	Bearing-Ball	1	24	2	323-57	Screw-HH	4	4	4
93-6855	Housing-Bedbar Adjust.	3	23	1	3218-18	Nut-Jam	3	17	2
93-6960	Cover-Bearing	1	22	1	3219-2	Nut-Lock	3	22	1
93-6980	Link	1	20	4	3230-1	Screw-Carriage	3	25	4
93-6981	Spacer	1	18	8	3231-25	Bolt-Carriage	4	14	4
93-8064	Decal-Shield	1	8	1	3253-4	Washer-Lock	3	33	1
93-8806	Washer	1	17	16	3253-5	Washer-Lock	1	4	4
93-8825	Coupling-Male RH	2	31	1	3256-25	Washer-Flat	3	9	1
93-8826	Coupling-Male LH	1	23	1	3256-38	Washer-Flat	4	25	2
93-8827	Spider-Coupling	2	32	1	3256-56	Washer-Flat	3	32	1
94-2703	Plug	2	38	1	3290-55	Rivet-Pop	4	8	6
94-3664	Kit-Skid	5	*	1	3290-467	Cotter-Hairpin	4	2	4
94-3695	Plate-Side RH	1	30	1	3296-4	Nut-Lock	3	21	1
94-3697	Plate-Side LH	1	27	1	3296-29	Nut-Lock	3	24	4
94-4585	Decal-Shield (Japan)	1	8	1	3296-39	Nut-Lock	4	6	16
94-4964	Frame-Cutting Unit	1	15	1	3296-39	Nut-Lock	1	14	6
94-4969	Asm-Rear Grass Guard	1	10	1	3296-62	Nut-Lock	3	3	1
94-4980	Bedbar	3	28	1	32121-36	Pin-Roll	1	6	4
94-4982	Asm-Full Roller	4	*	1	32128-36	Nut-HFH	1	16	8
94-4983	Shaft-Full/Wiehle Roller	5	4	1	32128-48	Nut-HFH	2	33	1
94-4983	Shaft-Roller	4	12	1	32144-10	Screw-HFH	1	7	2
94-4984	Tube-Roller	4	26	1	353-949	O-Ring	2	37	1
94-4993	Asm-Wiehle Roller	5	15	1					

*Not Illustrated

