



Shoulder Bolt Replacement Kit

Model No. 130-8185

Form No. 3423-717 Rev A

Installation Instructions

Installation

Loose Parts

Use the chart below to verify that all parts have been shipped.

Description	Qty.	Use
No parts required	—	Prepare the machine.
Shoulder bolt (1/2 x 1-1/8 inches)	1	Install the kit.
Locknut (1/2 inch)	1	
Flat washer (1/2 inch)	3	

Preparing the Machine

1. Park the machine on a level surface.
2. Engage the parking brake.
3. Shut off the engine and remove the key.

Installing the Kit

1. Remove the existing shoulder bolt and locknut from the bracket and deck (Figure 1).

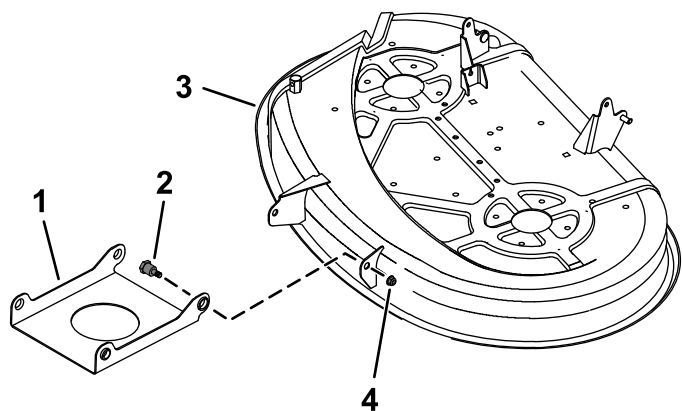


Figure 1

1. Bracket
2. Existing shoulder bolt
3. Deck
4. Existing locknut

2. Secure the bracket to the deck using the new shoulder bolt (1/2 x 1-1/8 inches), locknut (1/2 inch), and 3 flat washers (1/2 inch) as shown in Figure 2.

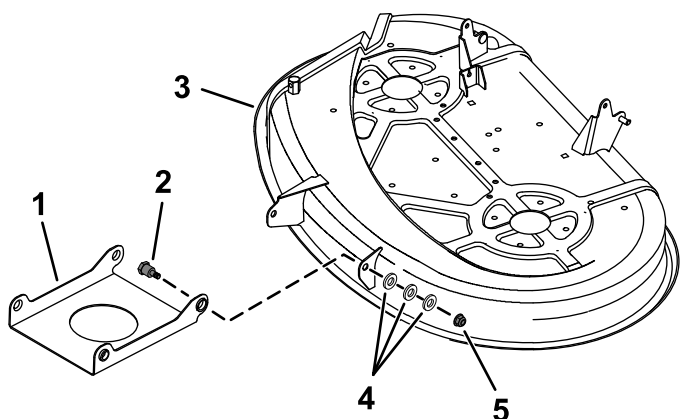


Figure 2

1. Bracket
2. Shoulder bolt (1/2 x 1-1/8 inches)
3. Deck
4. Flat washers (1/2 inch)
5. Locknut (1/2 inch)

