



WHEEL HORSE[®]

14-38XL LAWN TRACTOR

Model No. 71198 – 9900001 & Up

Model No. 71220 – 9900001 & Up

Parts Catalog

ORDERING REPLACEMENT PARTS

To order replacement parts, please supply: the part number, the quantity, and the description of each part desired.

Contents

Description	Page	Description	Page
Frame & Body Assembly	1	38" Deck Engagement Components	13
Hood & Tower Assembly	2	Height of Cut Components	14
Rear Body & Seat Assembly	3	Electrical Components	15
Steering Components Assembly	4	Wire Schematic	16
Fixed Steering Assembly	5	Peerless Transaxle Model MST 205-509 ..	17-18
Engine System Components	6	Engine Briggs & Stratton	
Traction Clutching Components	7	Model 28N777-1174-E1	19-27
Shifting Components	8	Toro Part Number Index	28-34
5 Speed Transaxle	9	Maintenance	35-37
38" Deck Components	10		
38" Deck Components (cont.)	11		
38" Deck Blade Drive &			
Braking Components	12		

Note:

Accessories

Description	Model / Parts No.	Description	Model / Parts No.
Easy Empty Bagging Kit		Tire Chains	Part No. 11-0430
(Model No. 71198 only)	Model No. 79116	42" Snowblade Kit	Model No. 79150
Easy Empty Bagging Kit	Model No. 79117	Wheel Weight Kit	Model No. 59159
Twin Bag Bagger Kit		Anti-Scalp Kit	
(Model No. 71198 only)	Model No. 79101	(Std. Model 71220)	
Twin Bag Bagger Kit	Model No. 79103	(Optional Model 71198)	Model No. 79182
Recycler Kit (Std.)	Model No. 79170	Exhaust Deflector Kit	Part No. 94-6872
Hi-Sail Bagging Blade	Part No. 57-4700		

Part Description Abbreviations

Part descriptions in this catalog may include the following abbreviations.

Abbreviation	Meaning	Abbreviation	Meaning
AR	as required	HS	hex socket
ASM	assembly	HSBH	hex socket button head
CARR	carriage	HSFH	hex socket flat head
DEG	degrees	HSH	hex socket head
FH	flat head	HWH	hex washer head
GA	gauge	HWHTF	hex washer head
HF	hex flange		thread forming
HFW	hex flange washer	INC	incorporated
HH	hex head	LH	left hand
HHF	hex head flange	PH	pan head
HHST	hex head self tapping	PPH	Phillips pan head
HJ	hex jam	PTO	power take off
HOC	height-of-cut	RH	right hand

SFH	slotted fillister head	TAP	self tapping
SH	square head	TH	truss head
SHWH	slotted hex washer head	TTH	Torx truss head
SPH	slotted pan head	WH	wing head
STD	standard		

Important Format Explanations

This catalog uses special formats to convey information in illustrations and parts lists. Specifically, one format is used in conjunction with service assemblies and another with quantities associated with reference numbers.

Service Assemblies

Parts within service assemblies have reference numbers in the form $X:Y$. X is the reference number of the service assembly and Y is a sequential number unique to each part within the service assembly.

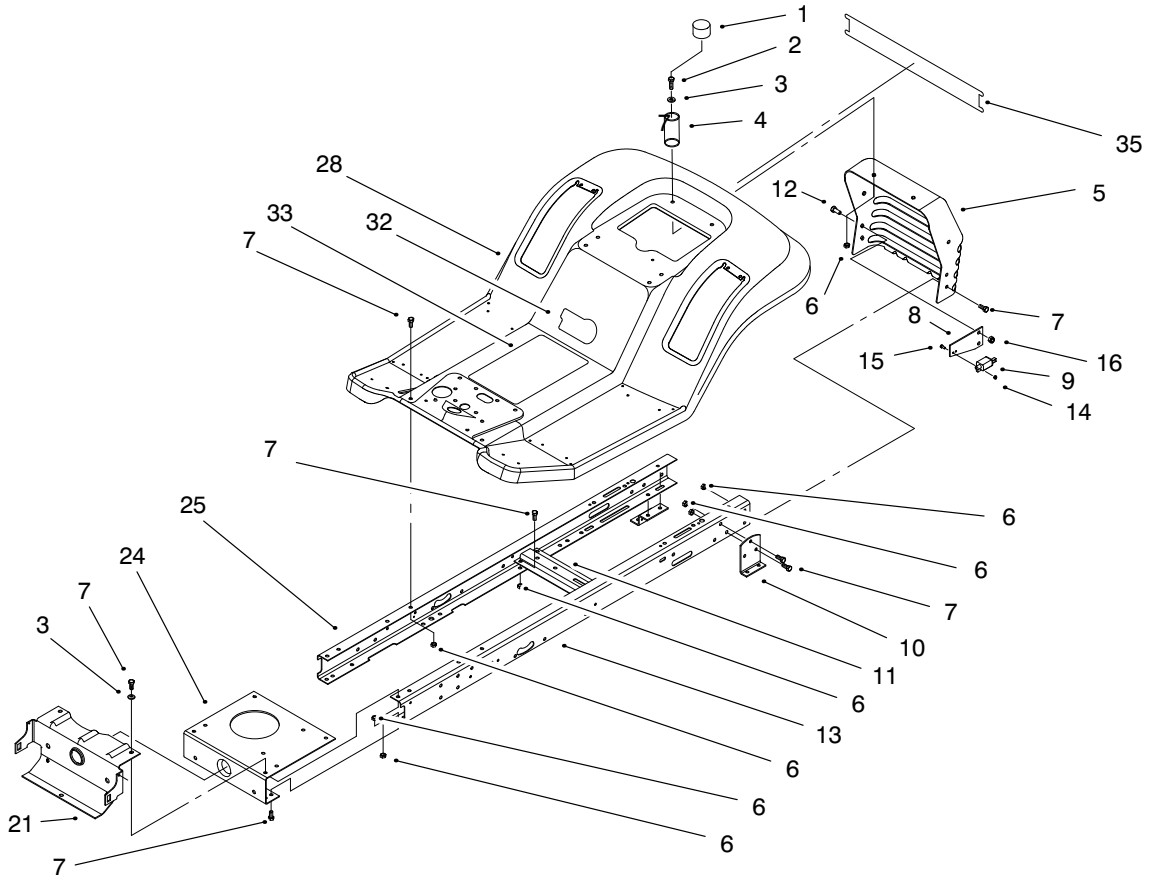
For example, a wheel assembly might be identified by reference number 6, the tire by 6:1, the valve by 6:2, and the wheel by 6:3. When you order the assembly identified by reference number 6, you receive all parts identified by reference numbers 6:1, 6:2, and 6:3. However, you may also order any part individually.

Reference numbers of this type appear in part lists and as callouts in illustrations.

Reference Numbers with Quantities

Illustrations may have a quantity in parentheses next to a reference number, in the form $X (Y)$. X is the reference number. Y in parentheses is the quantity of the part identified by the reference number.

For example, the illustration callout 4 (2) indicates that two parts are used in that instance.

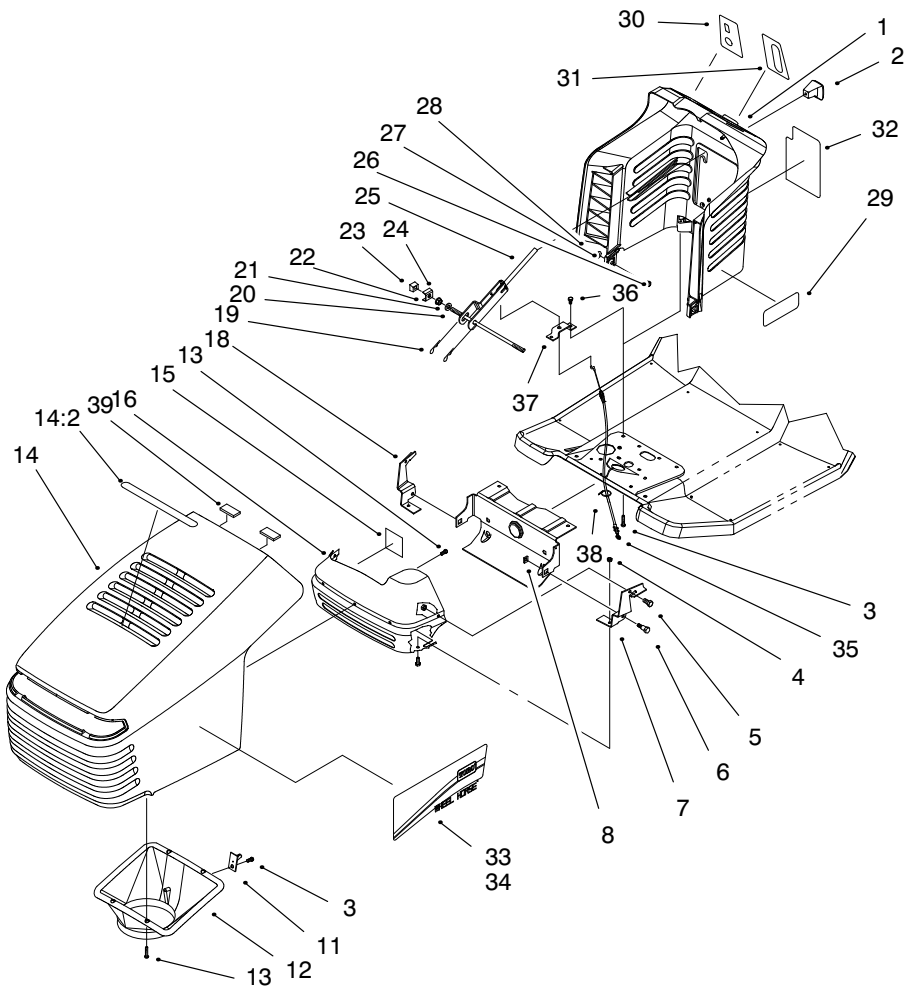


Sheet No.:2

Frame & Body Assembly

Ref. No.	Part No.	Qty.	Description
1	701178	2	Cap-Protector
2	322-5	2	Screw-HH
3	3256-23	4	Washer-Flat
4	88-6220	2	Spring - Compression
5	99-2957-03	1	Panel-Rear Hitch
6	3296-29	24	Nut-Lock Ni
7	322-3	22	Screw-HH
8	99-2953-03	1	Plate-Switch
9	95-1653	1	Switch - Single Pole
10	88-5260-03	2	Bracket-Transaxle Mtg
11	88-4620-03	1	Bracket-Idler Pivot
12	322-3	2	Screw-HH
13	99-2958-03	1	Rail- LH Frame
14	3296-1	2	Nut-Lock Ni
15	3290-392	2	Screw - Hex Head Slot
16	3296-29	2	Nut-Lock Ni
21	98-3575-03	1	Support-Front Axle
24	88-4630-03	1	Plate-Eng Mtg
25	99-2959-03	1	Rail- RH Frame
28	99-2971	1	Body ASM-Rear
32	76-1340	1	Decal - USA (Only On: 71198)
33	99-6094	1	Decal - Instruction (Only On: 71198)

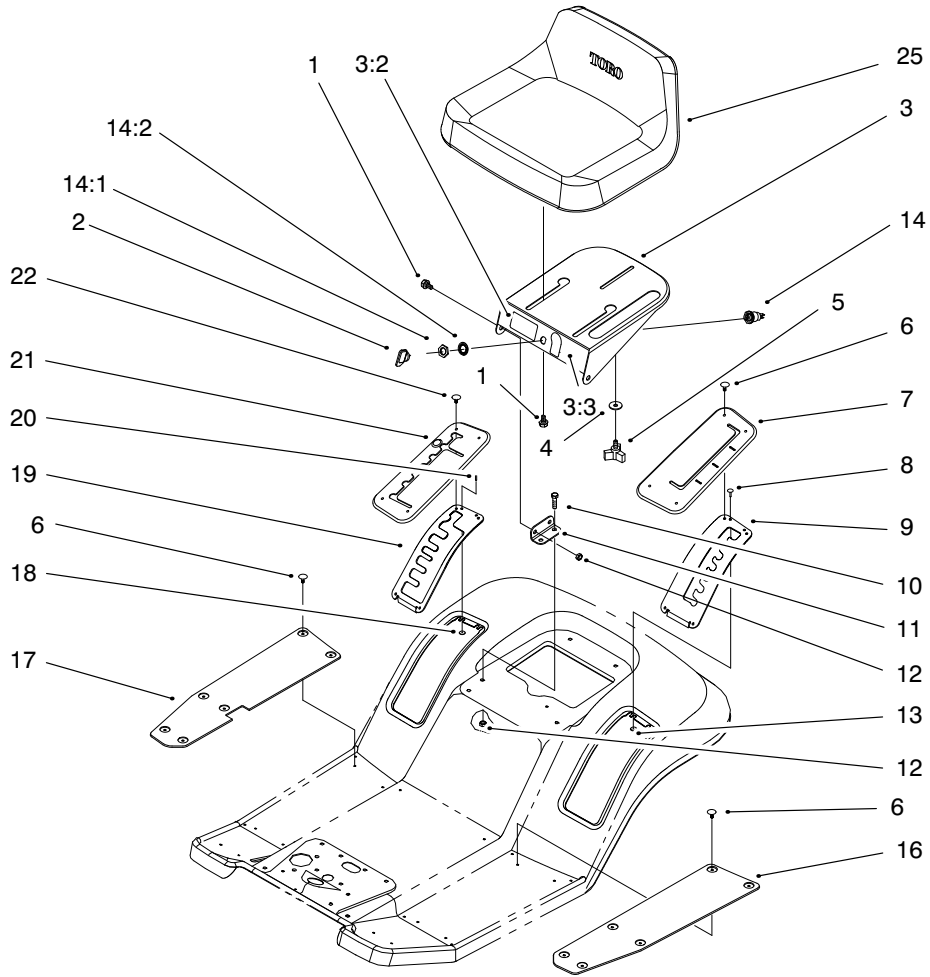
Ref. No.	Part No.	Qty.	Description
33	93-6675	1	Decal - Gear Instr. Intl (Only On: 71220)
35	95-0809	1	Decal-Rear Body



Sheet No.:3

Hood & Tower Assembly

Ref. No.	Part No.	Qty.	Description	Ref. No.	Part No.	Qty.	Description
1	99-1947	1	Tower-Steering [Service]	28	322-3	2	Screw-HH
2	94-5565	1	Knob - Shift	29	99-5912	2	Decal-1438 XI
3	46-8091	3	Special-HWH	30	99-8139	1	Decal-Ignition/Lights (Only On: 71198)
4	3296-42	4	Nut-Lock Ni	30	99-8141	1	Decal-Ignition/Lights (Only On: 71220)
5	321-2	4	Screw-HH	31	92-5730	1	Decal - Throttle (Only On: 71220)
6	28-0540	2	Bolt-Shoulder	31	92-2461	1	Decal - Throttle (Only On: 71198)
7	88-6050-03	1	Bracket-LH Hinge	32	92-2462	1	Decal - Deck Engage (Only On: 71198)
8	3290-496	2	Nut-Retainer	32	93-6673	1	Decal - Deck Engage (Only On: 71220)
11	94-1984	1	Latch - Pin	33	95-0808	1	Decal - Hood Left
12	88-4050	1	Duct-Air	34	95-0807	1	Decal - Hood Right
13	46-8090	7	Screw-Plastite	35	99-5826	1	Cable ASM-Deck Engage
14	92-8650	1	Hood-V-Chassis Toro	36	9266714	2	Screw-HWH
15	92-5782	1	Foil Tape	37	93-3849	1	Brkt-Upper Cable
16	93-3864-03	1	Shield - Heat	38	614249	1	Strap-Tie Sm
18	88-6040-03	1	Bracket-RH Hinge	39	94-1980	2	Foam - Hood
19	3290-307	2	Cotter-Hairpin				
20	88-4170	1	Rod-Tower Pivot				
21	3256-24	2	Washer-Flat				
22	32128-43	2	Nut-Lock Whiz				
23	88-4140	2	Nut-Wedge				
24	88-4160	2	Rod-Clamp Pivot				
25	88-5190-03	1	Deck Engage Lev Wa				
26	3296-29	2	Nut-Lock Ni				
27	3256-23	2	Washer-Flat				

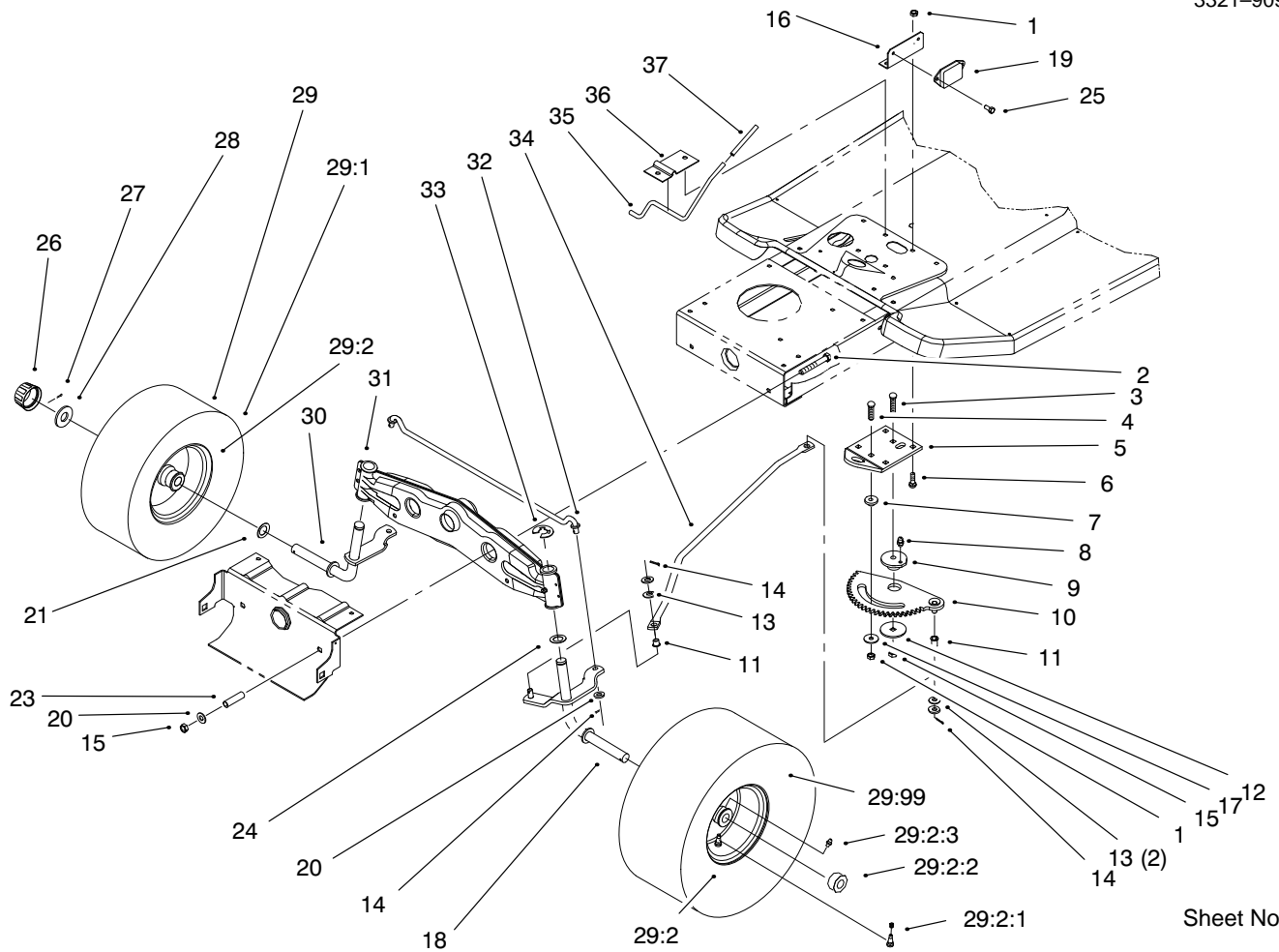


Sheet No.:4

Rear Body & Seat Assembly

Ref. No.	Part No.	Qty.	Description
1	37-8770	4	Bolt-Shoulder
2	63-8360	1	Key-Ignition w/Shield
3	99-5831	1	Support ASM-Seat (Only On: 71220)
3	99-5830	1	Support ASM-Seat (Only On: 71198)
3:2	99-2985	1	Decal-Danger (Only On: 71198)
3:2	99-2986	1	Decal-Danger Intl (Only On: 71220)
3:3	99-5340	1	Decal-Nmir Switch Intl (Only On: 71220)
3:3	99-5339	1	Decal-Nmir Switch (Only On: 71198)
4	5-4460	1	Washer-Pivot
5	92-9674	1	Knob
6	3290-479	16	Fastener-Panel
7	93-7657	1	Cover - HOC, Intl (Only On: 71220)
7	88-5170	1	Cover - HOC (Only On: 71198)
8	3290-282	2	Rivet-Stl Pop
9	88-5030-03	1	Gate-HOC
10	322-3	4	Screw-HH
11	88-4820-03	2	Bracket-Seat Hinge
12	3296-29	6	Nut-Lock Ni

Ref. No.	Part No.	Qty.	Description
13	3269-26	2	Washer-Flat
14	46-5780	1	Switch-Starter
14:1	218-461	1	Nut-F/W And Other
14:2	3254-5	1	Washer-Lock/Intl
16	88-5240	1	Mat-LH Foot
17	88-5220	1	Mat-RH Foot
18	3269-26	2	Washer-Flat
19	88-5020-03	1	Plate-Shift Gate
20	3290-282	2	Rivet-Stl Pop
21	93-7656	1	Cover - Shift, Intl (Only On: 71220)
21	88-5160	1	Cover-Shift Gate (Only On: 71198)
22	3290-479	4	Fastener-Panel
25	88-3950	1	Seat - Medium Back V411

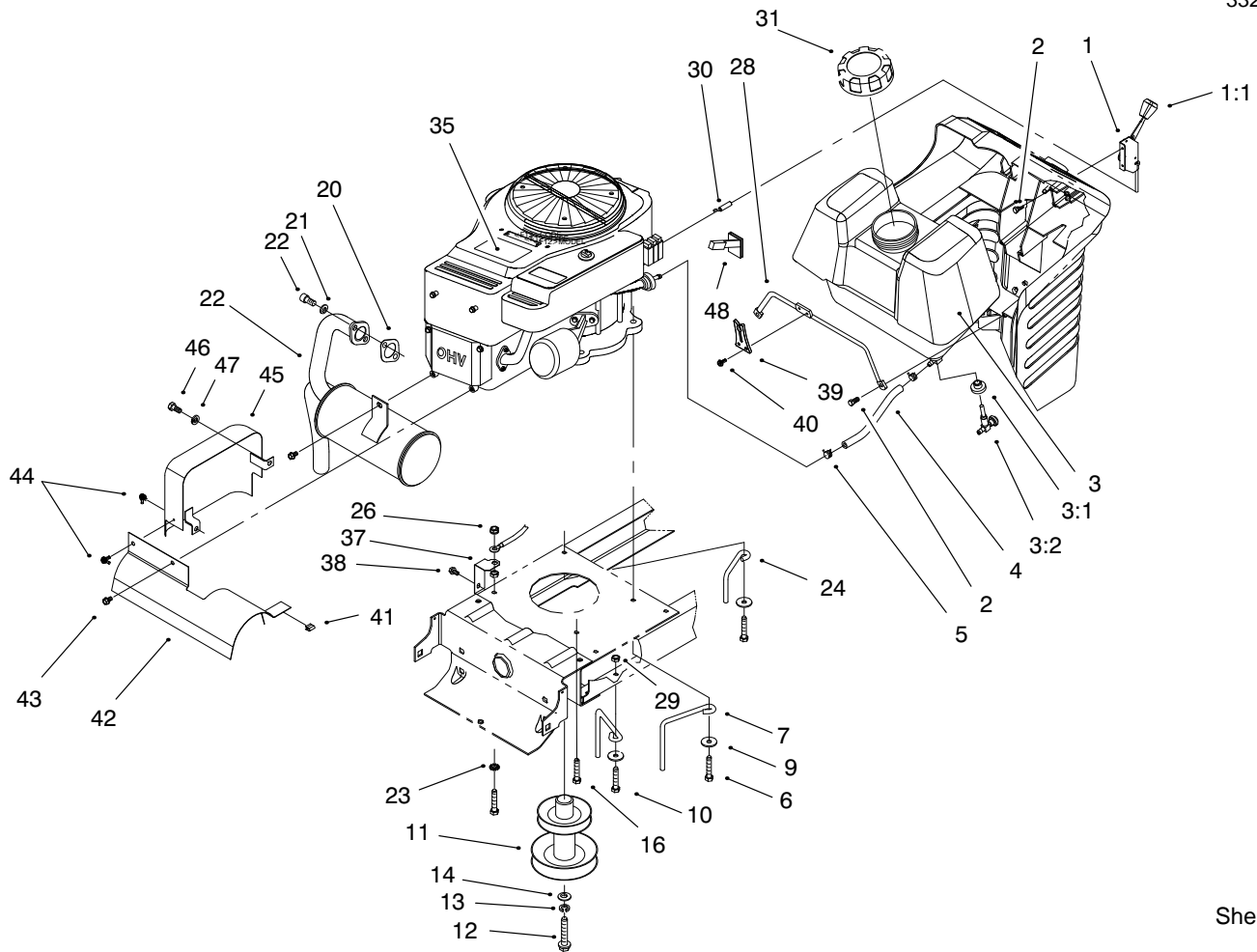


Sheet No.:5

Steering Components Assembly

Ref. No.	Part No.	Qty.	Description
1	3296-29	5	Nut-Lock Ni
2	323-13	2	Screw-HH
3	3231-4	1	Screw-CARR
4	3230-3	1	Screw-CARR
5	88-5130-03	1	Bracket-Steering Rack
6	3230-2	4	Screw-CARR
7	88-5010	1	Spacer - Steering Rack
8	302-26	1	Zerk
9	88-4670	1	Bushing - Eccentric
10	88-5200	1	Steering Rack Wa
11	52-2891	2	Bushing-Steering Link
12	111419	1	Bearing-Washer
13	3256-25	4	Washer-Flat
14	3272-10	4	Pin-Cotter
15	3296-39	3	Nut-Lock Ni
16	99-2956-03	1	Bracket-Module
17	5-4460	1	Washer-Pivot
18	92-7890-03	1	LH Spindle Wa (Only On: 71198)
19	99-3700	1	Module-Nmir
20	3256-24	4	Washer-Flat
21	3-6498	4	Washer-Thrust
23	88-5470	2	Spacer-Front Axle
24	3-6498	2	Washer-Thrust

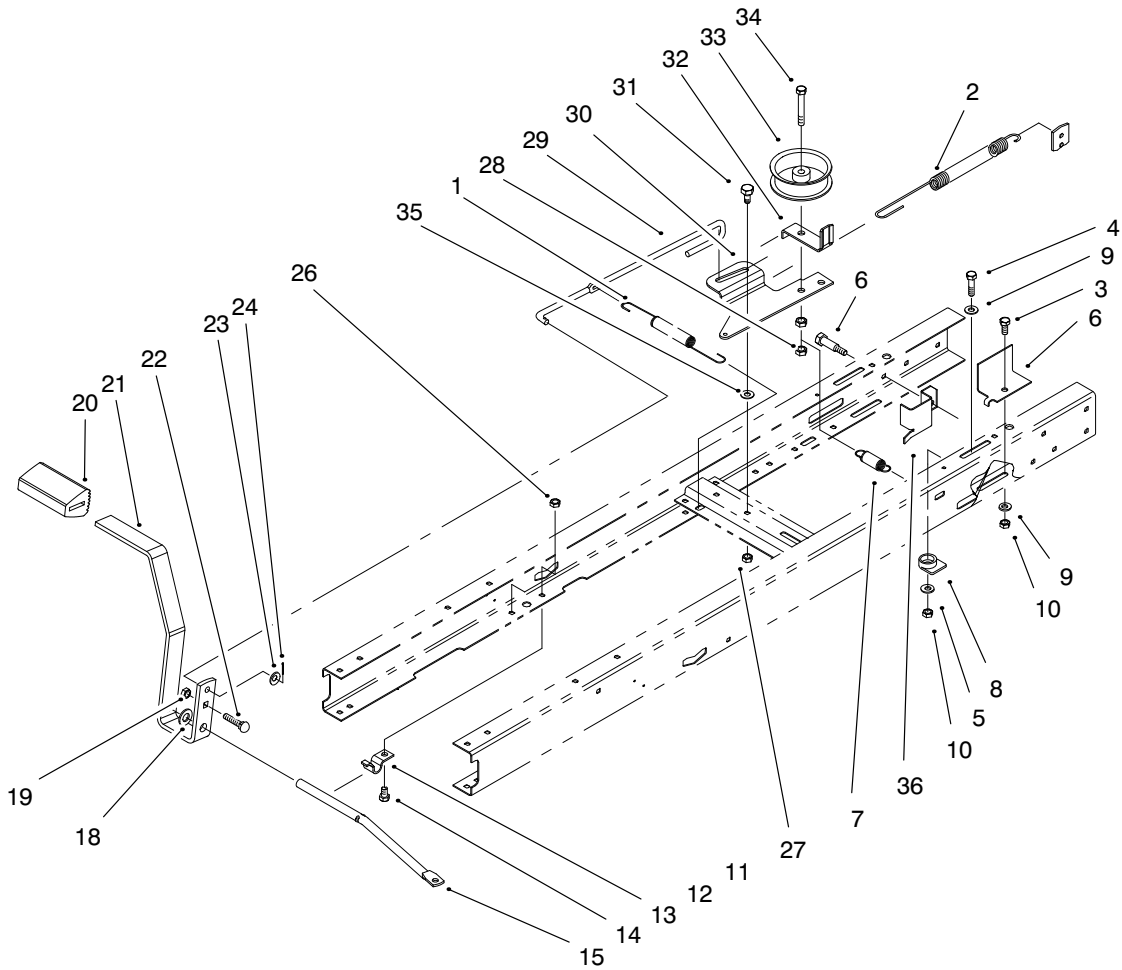
Ref. No.	Part No.	Qty.	Description
25	9266714	2	Screw-HWH
26	61-9780	2	Cap-Hub
27	3272-12	2	Pin-Cotter
28	28-2480	2	Washer
29		2	Wheel & Tire ASM Front
29:1	88-4070	2	Tire (Only On: Serial No. 990001-9905000)
29:1	99-2988	2	Tire (Only On: Serial No. 9905001 & Up)
29:2	88-4370	2	Rim ASM
29:2:1	237-27	2	Stem-Valve
29:2:2	88-4400	4	Bearing-Wheel
29:2:3	302-5	2	Zerk
29:99	232-39	2	Tube
30	92-7889-03	1	RH Spindle Wa
31	94-1962-03	1	Axle Wa-Front
32	88-5380	1	Tie Rod - Steering
33	32151-48	2	E-Ring
34	88-4830	1	Link-Drum
35	88-5510	1	Rod-Parking Brake
36	88-5520-03	1	Bracket-Parking Brake
37	88-0890	1	Grip-Bag Handle



Sheet No.:8

Engine System Components

Ref. No.	Part No.	Qty.	Description	Ref. No.	Part No.	Qty.	Description
1	88-4340	1	Control-Throttle	30	88-4350	1	Cable-Throttle
1:1	66-0120	1	Knob	31	88-3980	1	Gas Cap Assembly
2	27-0220	4	Screw-Special	35	99-8055	1	Decal - Engine
3	88-3880	1	Gas Tank ASM	37	93-3809	1	Bracket- Ground
3:1	104047	1	Bushing Sm	38	9266714	1	Screw-HWH
3:2	104048	1	Valve-Fuel	39	94-1951	1	Latch - Hood
4	47-2963	1	Hose-Gas	40	32144-112	2	Screw-Thread Forming
5	2412-98	2	Clamp	41	93-3882	1	Clip - Tinnerman, U
6	322-9	3	Screw-HH	42	93-3880-03	1	Shield-Muffler
7	93-3854	3	Guide - Belt Engine	43	9266714	2	Screw-HWH
9	5-4460	4	Washer-Pivot	44	32104-76	2	Screw-Acorn Slot
10	322-5	2	Screw-HH	45	93-8450-03	1	Wa - Exhaust Shield (Black)
11	94-1963	1	ASM - Engine Pulley	46	322-3	1	Screw-HH
12	26-0671	1	Screw-Blade	47	3253-4	1	Washer-Lock/Sp
13	3253-22	1	Washer-Lock/Sp	48	88-4490	1	Reducer-Throttle Rpm (Only On: 71220)
14	3256-25	1	Washer-Flat				
15	94-1953	1	Muffler - Exhaust				
16	9267154	1	Screw				
20	88-4410	1	Gasket-Muffler				
21	3253-4	2	Washer-Lock/Sp				
22	3274-10	2	Screw-HSH				
23	3255-8	1	Washer-Lock/Ext				
24	93-3855	1	Guide - Belt RH				
26	32149-1	2	Nut-Keps				
28	94-1952	1	Rod - Gas Tank				
29	3296-29	4	Nut-Lock Ni				

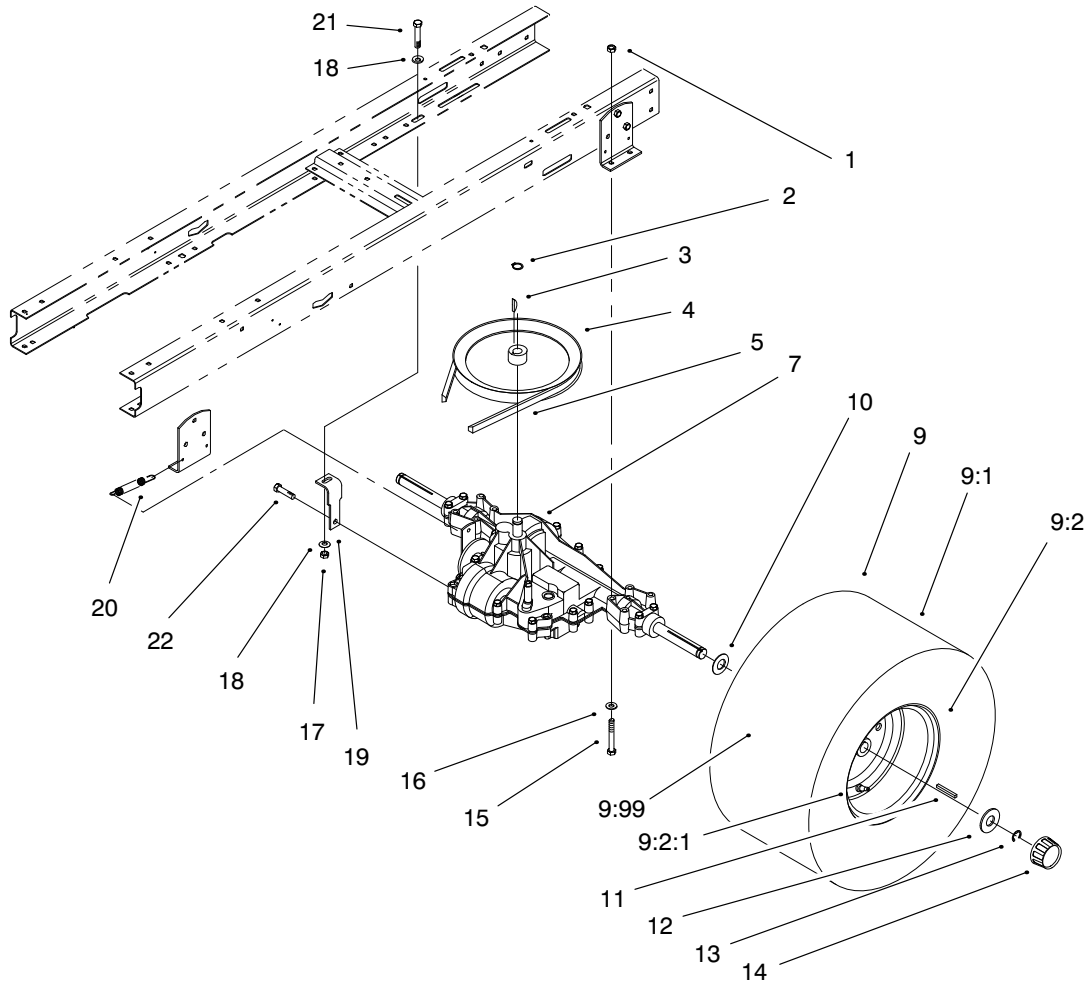


Sheet No.:9

Traction Clutching Components

Ref. No.	Part No.	Qty.	Description
1	27-8890	1	Spring-Return
2	94-4294	1	Spring - Brake
3	322-3	1	Screw-HH
4	322-6	1	Screw-HH
5	5-4460	1	Washer-Pivot
6	94-5433	1	Bracket - Belt Guide
7	88-6330	1	Spring - Extension
8	84-5610	1	Guide-Cable
9	3256-23	2	Washer-Flat
10	3296-29	2	Nut-Lock Ni
13	88-4810	1	Clamp-Shift Pivot
14	322-3	2	Screw-HH
15	88-5500	1	Rod-Pedal Pivot
18	3256-26	1	Washer-Flat
19	3296-29	1	Nut-Lock Ni
20	65-2920	1	Pad-Pedal
21	88-5000-03	1	Pedal-Clutch/Brake
22	3230-3	1	Screw-CARR
23	3256-23	1	Washer-Flat
24	3272-10	1	Pin-Cotter
26	3296-29	2	Nut-Lock Ni
27	3296-29	1	Nut-Lock Ni
28	3296-59	2	Nut-Lock Ni
29	88-5270	1	Rod-Clutch/Brake
30	88-6070	1	Arm-Idler
31	37-8770	1	Bolt-Shoulder

Ref. No.	Part No.	Qty.	Description
32	88-5560	1	Guide-Idler Belt
33	88-5680	1	Pulley-Idler
34	323-11	1	Screw-HH
35	5-4460	1	Washer-Pivot
36	94-4926	1	Bracket - Belt Guide

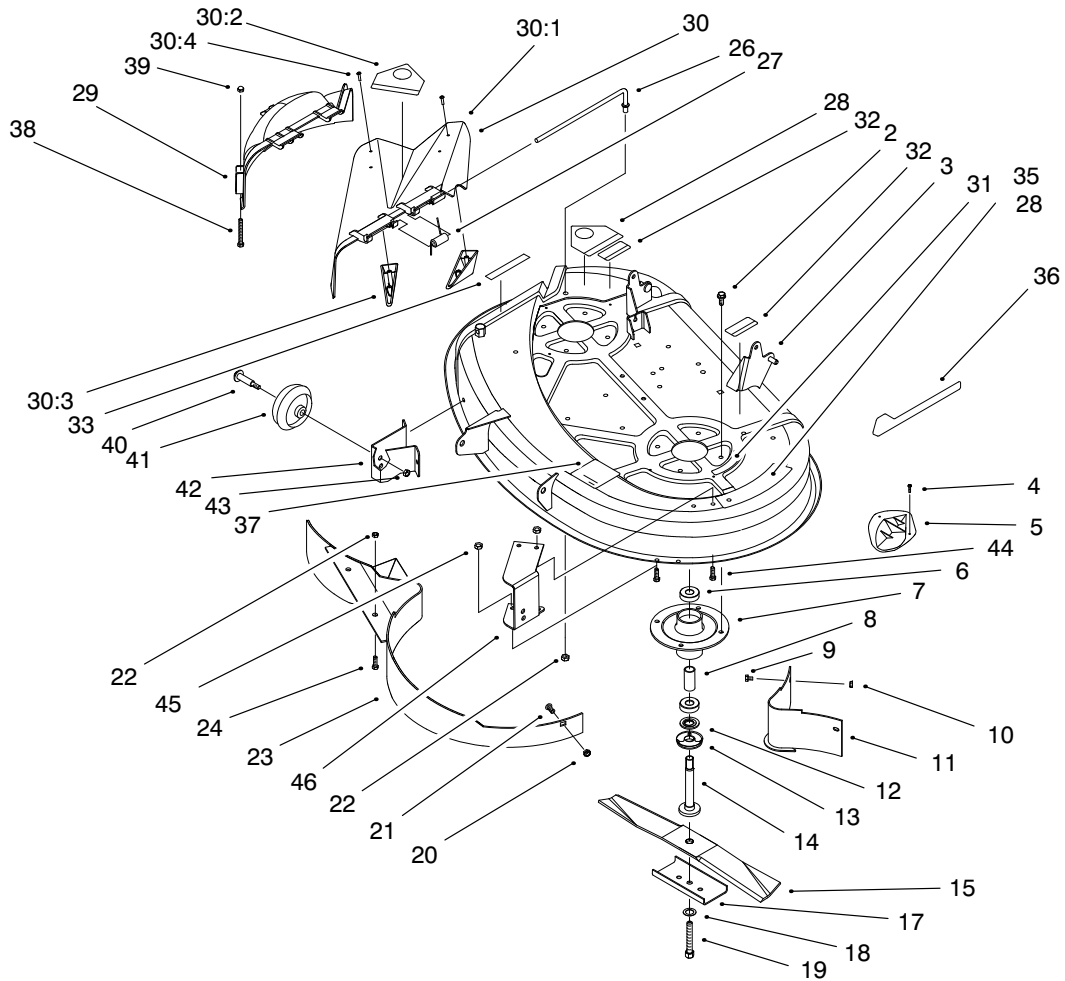


Sheet No.:11

5 Speed Transaxle

Ref. No.	Part No.	Qty.	Description
1	3296-29	4	Nut-Lock Ni
2	32120-64	1	Ring-External Snap
3	3257-23	1	Key-Woodruff
4	88-4840	1	Pulley - Transmission
5	88-6270	1	V - Belt
7	94-6022	1	Transaxle
9		2	Wheel& Tire ASM Rear
9:1	88-4090	2	Tire (Only On: Serial No. 9000001-9005000)
9:1	99-2996	2	Tire (Only On: Serial No. 9005001 & Up)
9:2	88-4390	2	Rim Assembly
9:2:1	232-27	2	Stem-Valve
9:99	231-91	2	Tube
10	3-6498	2	Washer-Thrust
11	7-0036	2	Key
12	28-2480	2	Washer
13	32151-48	2	E-Ring
14	61-9780	2	Cap-Hub
15	322-12	4	Screw-HH
16	3256-23	4	Washer-Flat
17	3296-29	2	Nut-Lock Ni
18	3256-23	4	Washer-Flat
19	94-1969	2	Strap - Torque

Ref. No.	Part No.	Qty.	Description
20	26-6701	1	Spring-Brake Return
21	322-3	2	Screw-HH
22	32144-14	2	Screw-HWH

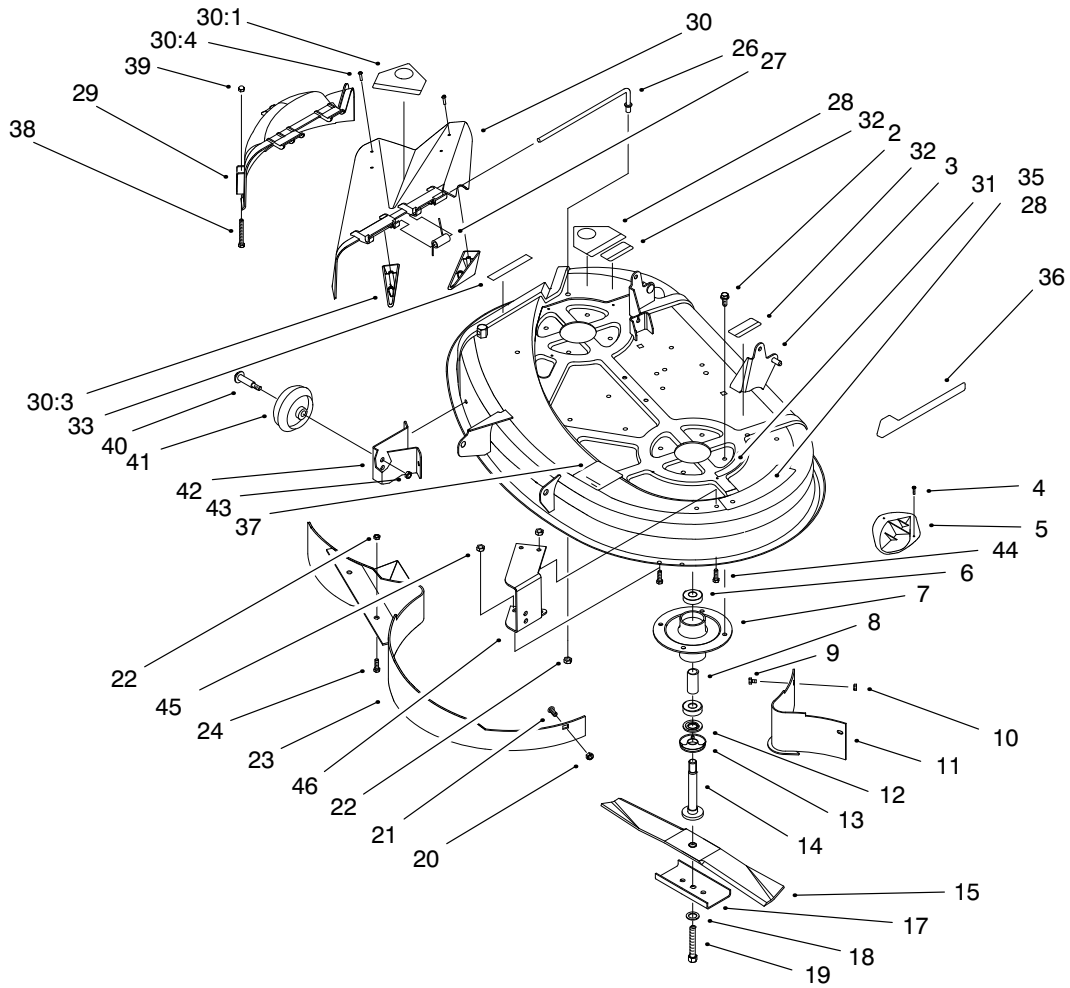


Sheet No.:16

38" Deck Components

Ref. No.	Part No.	Qty.	Description
2	32144-41	8	Screw-Taptite
3	99-5846	1	Deck Asm-service (Only On: 71198)
3	99-5847	1	Deck ASM-Service,Intl (Only On: 71220)
4	32144-111	8	Screw-Plask
5	76-2160	4	Kicker Plate
6	38-7820	4	Bearing-Ball
7	88-4510	2	Diecast Alum Spindle
8	62-3661	2	Bearing Spacer
9	321-4	2	Screw-HH
10	3296-42	2	Nut-Lock Ni
11	79-1640-03	1	Baffle Wa
12	80-4380	2	Spacer
13	80-4360	2	Shield-Bearing
14	80-4341	2	Spindle Shaft
15	79-3061	2	Blade-19.32 Rec
17	80-0510-03	2	Blade Stiffener
18	3290-465	2	Washer-Belleville
19	26-0671	2	Screw-Blade
20	3296-29	1	Nut-Lock Ni
21	3230-1	1	Screw-CARR
22	3296-39	3	Nut-Lock Ni
23	79-1600-03	1	Baffle Wa
24	323-5	2	Screw-HH

Ref. No.	Part No.	Qty.	Description
26	95-1661	1	Rod - Pivot
27	57-6950	1	Spring
28	93-7010	2	Decal - Danger (Only On: 71220)
28	93-1122	1	Decal - Danger (Only On: 71198)
29	88-4430	1	Recycler Cover
30	93-0317	1	Deflector ASM - 38" (Only On: 71198)
30	93-7695	1	ASM - 38" Deflector, Intl (Only On: 71220)
30:1	88-4550	1	38" Deflector-Deck (Only On: 71198)
30:1	93-8495	1	38" Deflector (Only On: 71220)
30:2	93-1122	1	Decal-Danger (Only On: 71198)
30:2	93-7010	1	Decal-Danger (Only On: 71220)
30:3	93-7696	2	Kicker-Ce (Only On: 71220)
30:4	93-0231	4	Screw-PPH (Only On: 71220)
31	93-6677	1	Decal - Shield Danger (Only On: 71220)

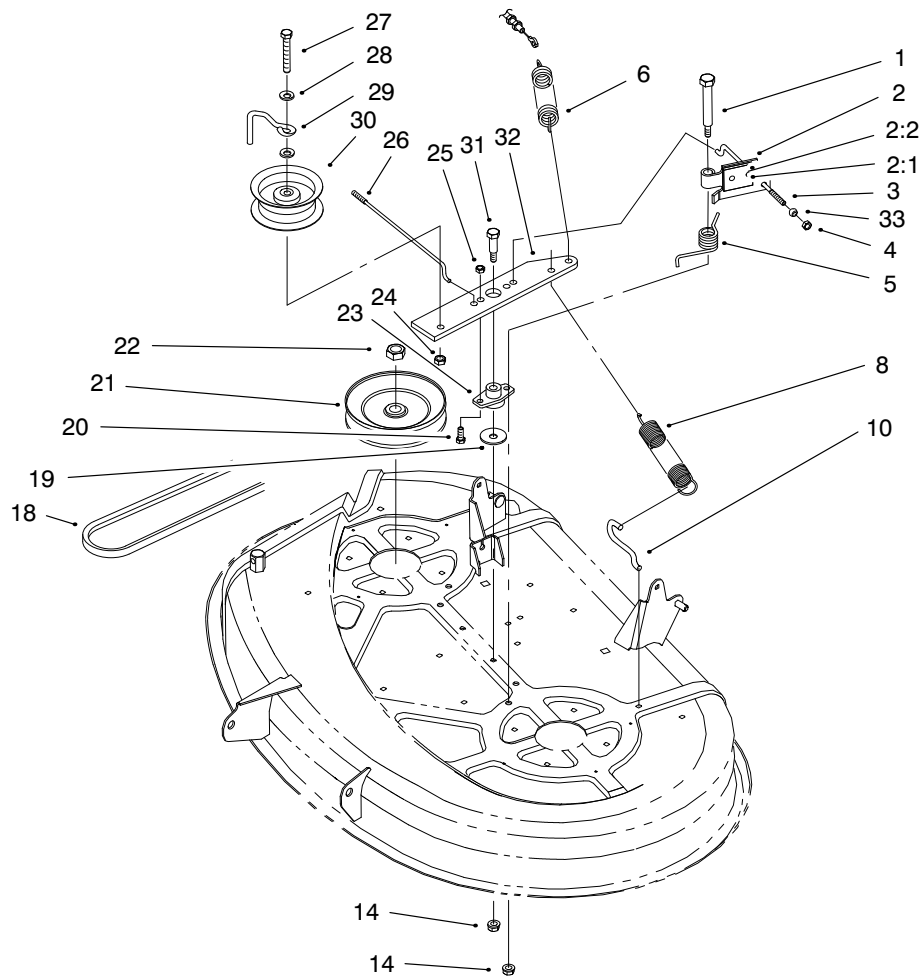


Sheet No.:16

38" Deck Components (cont.)

Ref. No.	Part No.	Qty.	Description
31	68-3660	1	Decal -, Shield Danger (Only On: 71198)
32	55-4300	2	Decal (Only On: 71198)
32	93-6674	2	Decal - Warning (Only On: 71220)
33	68-3650	1	Decal-Deflector Danger (Only On: 71198)
33	93-7009	1	Decal-Deflector Danger (Only On: 71220)
35	79-3140	1	Decal-Danger (Only On: 71198)
36	92-9520	1	Decal-Recycler Deck 38"
37	93-6679	1	Decal - Belt Routing, 38"
38	321-15	2	Screw-HH
39	32111-7	2	Nut-Cap
40	56-6591	2	Wheel Bolt (Only On: 71220)
41	701756	2	Wheel-Gage (Only On: 71220)

Ref. No.	Part No.	Qty.	Description
42	88-5740-03	1	RH Whl Deck Brkt (Only On: 71220)
43	3296-39	2	Nut-Lock Ni (Only On: 71220)
44	322-3	6	Screw-HH (Only On: 71220)
45	3296-29	6	Nut-Lock Ni (Only On: 71220)
46	93-3896-03	1	Brkt,LH Deckwheel (Only On: 71220)

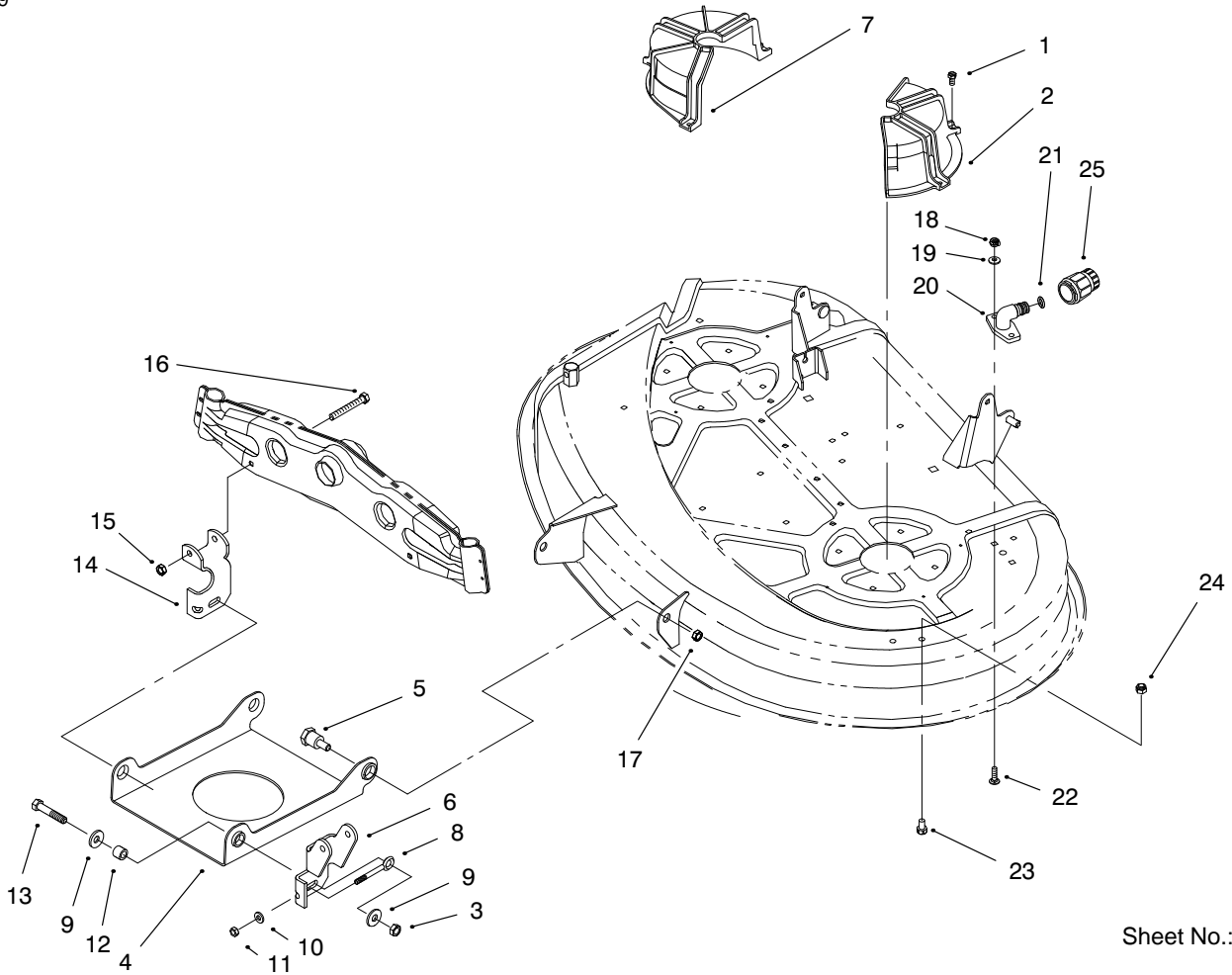


Sheet No.:17

38" Deck Blade Drive & Braking Components

Ref. No.	Part No.	Qty.	Description
1	88-4590	2	Bolt-Shoulder
2	88-6100	2	Brake ASM
2:1	3290-282	2	Rivet-Stl Pop
2:2	56-9830	1	Pad-Brake
3	88-5550	1	LH Deck Brake Rod
4	3296-42	2	Nut-Lock Ni
5	88-5910	2	Torsion Spring
6	88-6130	1	Deck Engage Spring
8	92-8934	1	Spring - Extension
10	88-5970	1	Hook Return Spring
14	3296-58	3	Nut-Lock Ni
18	88-6250	1	V - Belt
19	3256-68	1	Washer-Flat
20	322-5	2	Screw-HH
21	88-5330	2	Pulley Deck 38"
22	3219-6	2	Nut-Hex
23	88-4980	1	Bushing Idler Arm
24	3296-39	1	Nut-Lock Ni
25	3296-29	2	Nut-Lock Ni
26	88-5540	1	RH Deck Brake Rod
27	323-12	1	Screw-HH
28	3256-24	2	Washer-Flat
29	88-5070	1	Idler Belt Guide
30	88-5630	1	Flat Idler Pulley
31	7-0030	1	Bolt-Shoulder

Ref. No.	Part No.	Qty.	Description
32	88-4870-03	1	Arm Idler Deck
33	67-0710	2	Ball-Swivel Stop

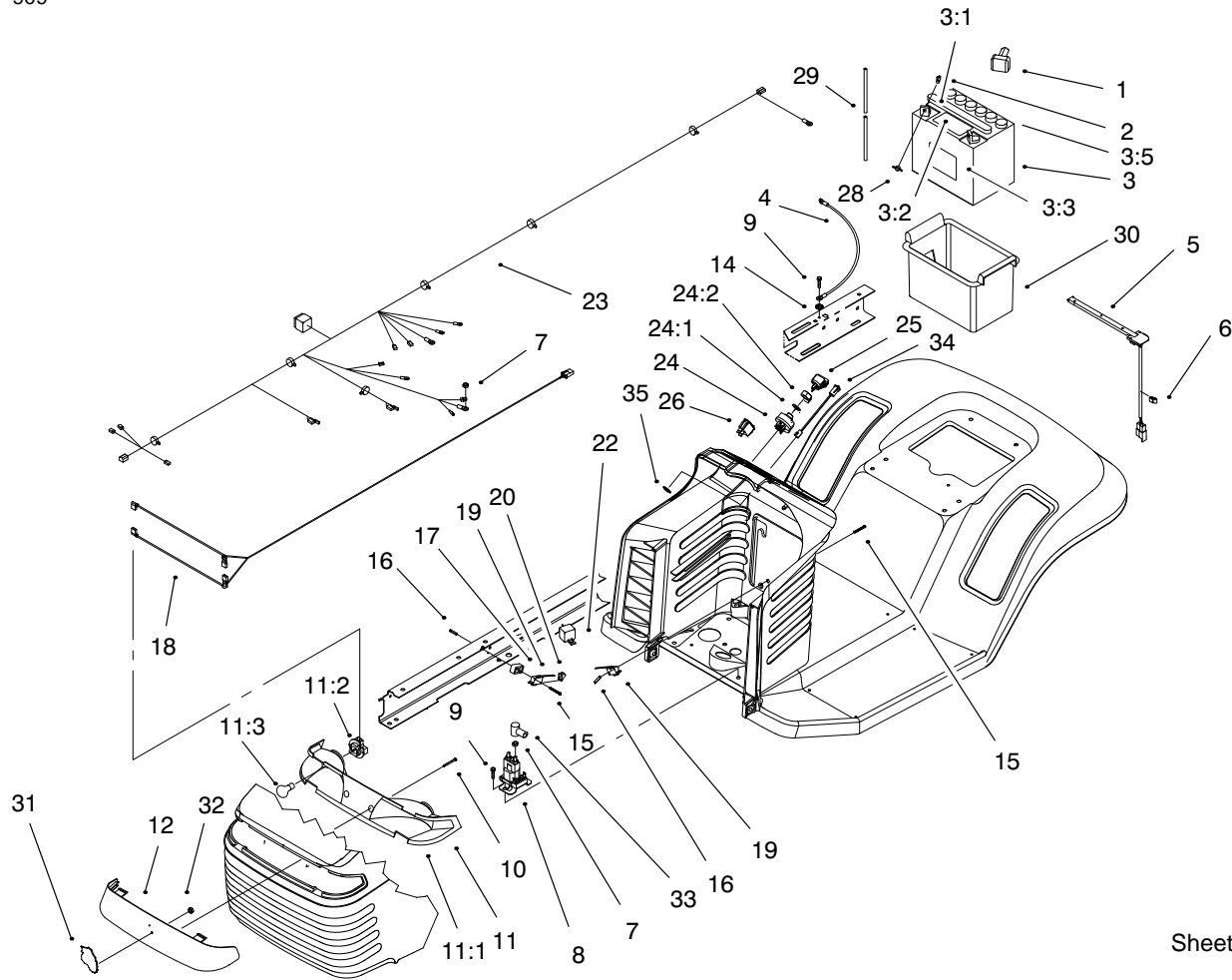


Sheet No.:18

38" Deck Engagement Components

Ref. No.	Part No.	Qty.	Description
1	32104-76	5	Screw-Acorn Slot
2	88-4030	1	LH Deck Belt Guide
3	3296-39	2	Nut-Lock Ni
4	93-3881-03	1	Frt Deck Susp Pan
5	94-5823	2	Bolt - Shoulder
6	94-1971-03	1	Brkt - LH Deck Susp
7	88-4020	1	RH Deck Belt Guide
8	61-9980	2	Screw-Adjusting
9	80-6990	4	Washer - Hardened
10	3256-22	2	Washer-Flat
11	3296-42	2	Nut-Lock Ni
12	93-9847	2	Spacer
13	323-9	2	Screw-HH
14	94-1970-03	1	Brkt-RH Deck Susp
15	3296-29	2	Nut-Lock Ni
16	322-12	2	Screw-HH
17	3296-23	2	Nut-Lock Ni
18	3296-16	2	Nut-Lock Ni
19	3256-1	2	Washer-Flat
20	95-2747	1	Fitting - Washout
21	46-6290	1	O Ring
22	3229-1	2	Screw-CARR
23	322-1	2	Screw-HH (Only On:

Ref. No.	Part No.	Qty.	Description
			71198)
24	3296-29	2	Nut-Lock Ni (Only On: 71198)
25	95-3270	1	Connector - Hose (Only On: 71198)



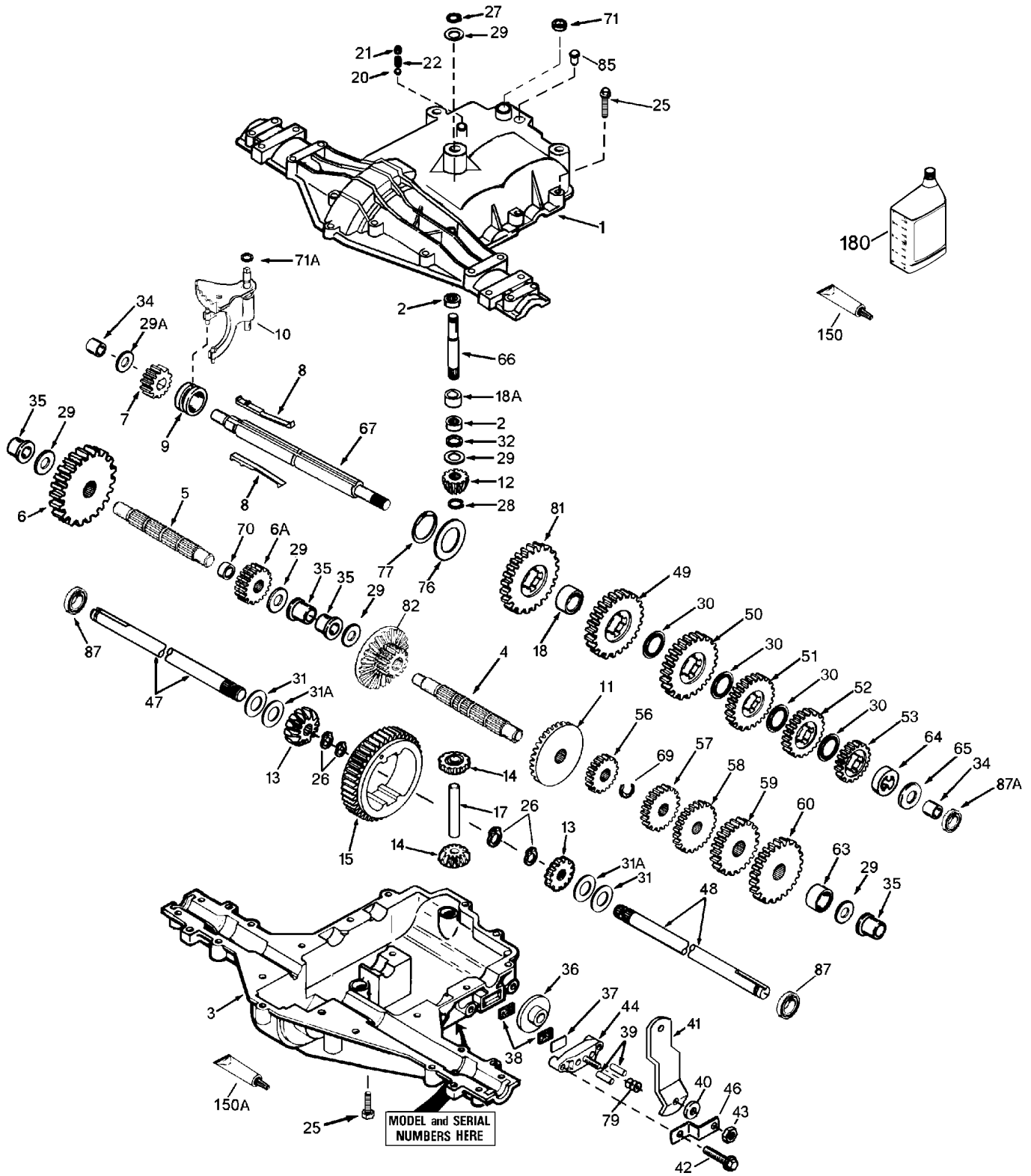
Sheet No.:20

Electrical Components

Ref. No.	Part No.	Qty.	Description
1	28-8080	1	Boot-Terminal
2	321-4	2	Screw-HH
3	80-2600	1	Battery
3:1	93-9354	1	Decal-Battery
3:2	93-7276	1	Decal-Danger
3:3	93-6668	1	Decal-Battery
3:5	218-560	6	Cap-Battery
4	44-8110	1	Wire ASM
5	38-1420	1	Switch-Seat
6	702366	1	Clip-Wire Retainer
7	32149-2	3	Nut-Keps
8	92-9845	1	Solenoid
9	9266714	3	Screw-HWH
10	32144-32	2	Screw
11	88-3970	1	Reflector & Lamp ASM
11:1	93-8741	1	Reflector-Headlight
11:2	111686	2	Socket Assembly
11:3	7228	2	Bulb-Light
12	88-3960	1	Lens-Headlight
14	3255-7	2	Washer-Lock/Ext
15	93-0539	4	Screw-HH
16	3290-354	2	Nut-Speed
17	88-4880	1	Spacer
18	99-1935	1	Harness-Headlight
19	88-9932	2	Switch-Micro
20	93-3240	1	Plunger-Seal

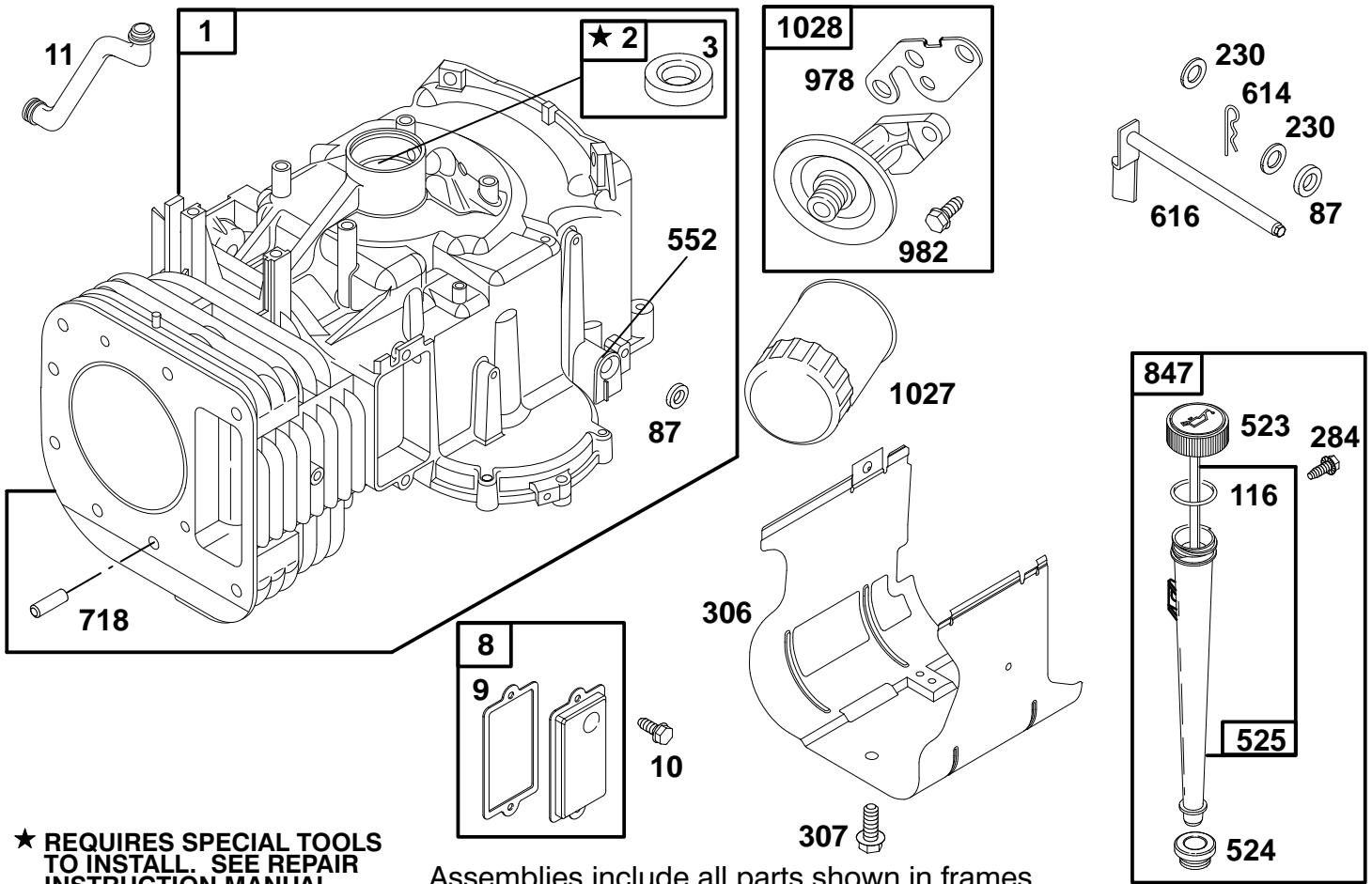
Ref. No.	Part No.	Qty.	Description
22	98-7249	1	Relay-Spdt
23	99-2978	1	Harness-Wire
24	88-9830	1	Switch-Ignition
24:1	3254-5	1	Washer-Lock/Int
24:2	218-461	1	Nut-F/W
25	63-8360	1	Key-Ignition w/Shield
26	92-8875	1	Switch - Rocker
28	32103-22	2	Nut-Wing
29	56-2540	1	Tube-Batt
30	88-4040	1	Box-Battery
31	80-2240	1	Emblem-Grille
32	3290-299	1	Clip
33	94-5362	1	Boot - Terminal
34	95-7652	1	Light - Indicator
35	99-6059	1	Clip-Retainer

PEERLESS TRANSAXLE MODEL MST 205-509



PEERLESS TRANSAXLE MODEL MST 205-509

Ref. No.	Part No.	Description	No. Used	Ref. No.	Part No.	Description	No. Used
1	772137	Transaxle Cover	1	39	786026	Dowel Pin	2
2	780086A	Needle Bearing	2	40	792076A	Flat Washer	1
3	770123	Transaxle Case	1	41	790080	Brake Lever	1
4	776395	Countershaft	1	42	792073	Screw	2
5	776397	Output Shaft	1	43	792075	Locknut	1
6	778331	Spur Gear (38 teeth)	1	44	790025	Brake Pad Holder	1
6A	778332	Spur Gear (15 teeth-steel)	1	46	786086	Brake Lever Bracket	1
7	778330	Spur Gear (11 teeth-steel)	1	47	774690	Axle (11-15/16" long)	1
8	792136A	Shift Key	2	48	774691	Axle (16-1/2" long)	1
9	784352	Shift Collar	1	49	778356	Spur Gear (29 teeth-steel)	1
10	784378	Shift Rod & Fork	1	50	778354	Spur Gear (23 teeth-steel)	1
11	778334	Bevel Gear (30 teeth)	1	51	778344	Spur Gear (20 teeth)	1
12	778309	Input Bevel Pinion (13 teeth)	1	52	778350	Spur Gear (16 teeth-steel)	1
13	778327	Bevel Gear (16 teeth-steel)	2	53	778346	Spur Gear (15 teeth-steel)	1
		(Incl. 14)	2	56	778355	Spur Gear (11 teeth-steel)	1
14	778327	Bevel Gear (16 teeth-steel) (Incl. 13)	2	57	778353	Spur Gear (17 teeth-steel)	1
15	778312A	Ring Gear (43 teeth)	1	58	778343	Spur Gear (20 teeth)	1
17	786139	Drive Pin	1	59	778349	Spur Gear (24 teeth-steel)	1
18	786102	Spacer	1	60	778345	Spur Gear (25 teeth)	1
18A	786175	Spacer	1	63	786071	Countershaft Spacer	1
20	792077	Ball 5/16" dia	1	64	786072	Brake Shaft Spacer	1
21	792078	Set Screw	1	65	780189	Washer	1
22	792079	Spring	1	66	776394	Input Shaft	1
25	792073	Screw	18	67	776396	Shifter & Brake Shaft	1
26	792125	Retaining Ring (pkg of 2)	4	69	792170	Retaining Ring	1
27	792035	Retaining Ring	1	70	786172	Spacer	1
28	788040	Retaining Ring	1	71	788069	Square Cut Ring	1
29	780072	Washer	6	71A	788092	"O" Ring	1
29A	780160	Washer	1	76	780090	Washer	1
30	780108	Washer	4	77	788078A	Inverted Retaining Ring	1
31	780001	Washer (.056 wide) (USE AS NEEDED)	2	79	792144	Spring	1
31A	780195	Flat Washer (.062 wide)	2	81	778338	Spur Gear (27 teeth)	1
32	788083	Oil Seal	1	82	778333	Bevel & Spur Gear (30 & 13 teeth)	1
34	780194	Bushing	2	85	792154	Pipe Plug	1
35	780193	Flanged Bushing	4	87	788088	Oil Seal	2
36	790075	Brake Disk	1	87A	788089	Oil Seal	1
37	790007	Brake Pad Plate	1	150	788093	Liquid Gasket RTV Silicone	1
38	799021	Brake Pad (pkg of 2)	2	150A	788094	Liquid Gasket Loctite #242	1
				180	730229A	Gear Oil 80W90	1



★ REQUIRES SPECIAL TOOLS TO INSTALL. SEE REPAIR INSTRUCTION MANUAL.

Assemblies include all parts shown in frames.

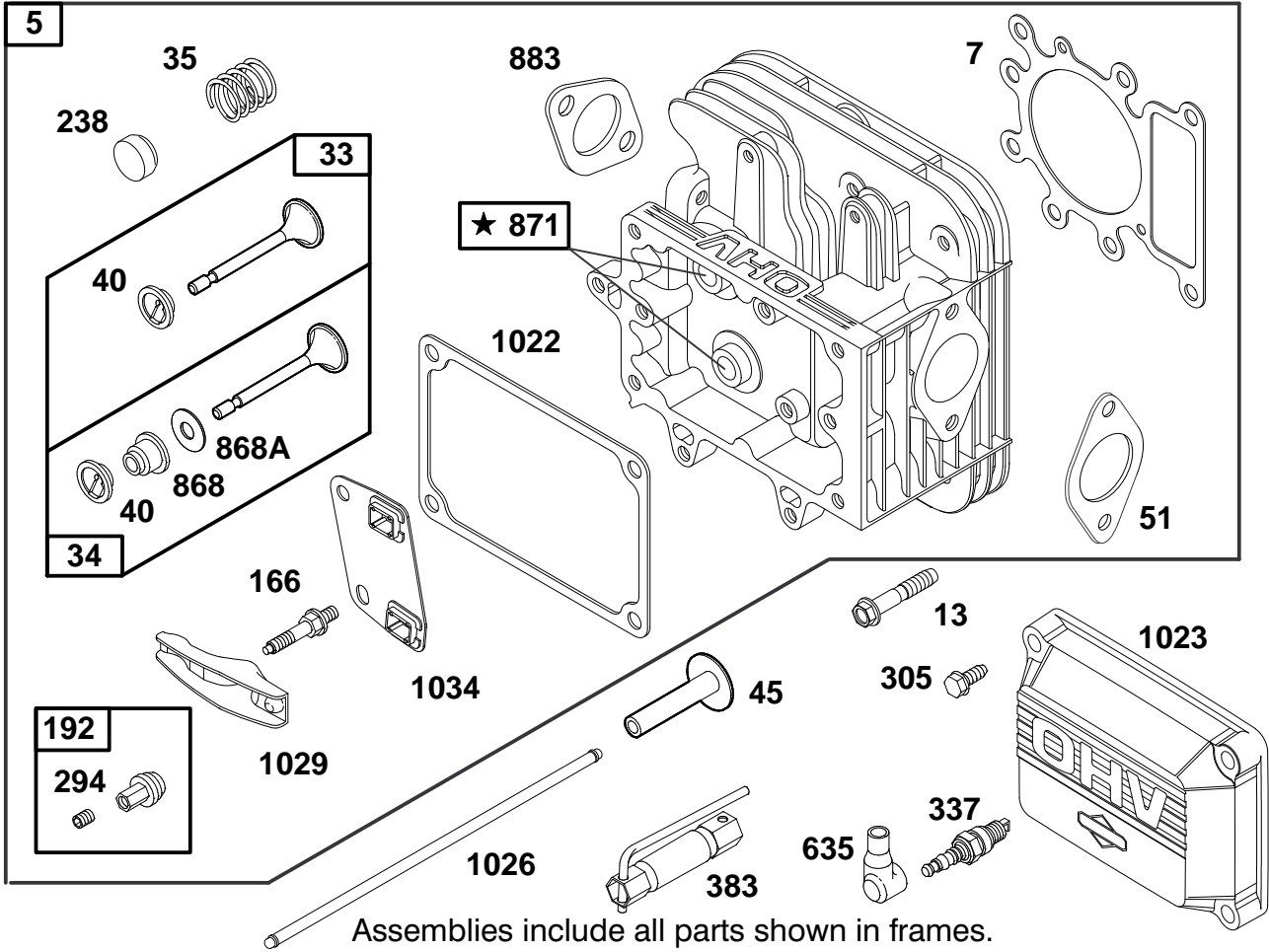
ENGINE BRIGGS & STRATTON MODEL 28N777-1174-E1

Ref. No.	Part No.	Description	No. Used
1	496412	Cylinder Assembly	1
2	399265	Bearing-Cylinder	1
★3	391086	Seal-Oil	1
8	495735	Breather Assembly	1
★9	27803	Gasket-Valve Cover	1
10	94621	Screw-Sem	1
11	281246	Tube-Breather	1
★87	491323	Seal-Governor	1
★116	270920	Seal-Oil Fill Cap	1
230	94927	Washer-Governor Lever	1
284	94903	Screw-Hex. Head	1
306	225020	Shield-Cylinder	1
307	94930	Screw-Self Tap	1
523	495230	Cap-Oil Fill	1

Ref. No.	Part No.	Description	No. Used
★524	281370	Seal-Fill Tube	1
525	496113	Tube-Oil Fill	1
552	491986	Bushing-Gov. Crank	1
		Note: Includes Seal, Ref. No. 87	1
614	93306	Pin-Cotter	1
616	495157	Crank-Governor	1
718	230192	Pin-Dowel	1
847	496415	Fill Group-Oil	1
978	272888	Gasket-Filter Adapter	1
982	94899	Screw-Hex. Head	1
1027	492932	Filter-Oil	1
1028	496744	Adapter-Filter	1

★ Included in Gasket Set-Part No. 495993.
 △ Included in Valve Overhaul Kit-Part No. 495992.

● Included in Carburetor Kit-Part No. 499233.
 ◆ Included in Carburetor Gasket Set-Part No. 494385.



ENGINE BRIGGS & STRATTON MODEL 28N777-1174-E1

Ref. No.	Part No.	Description	No. Used
5	495858	Head-Cylinder	1
Δ*7	273280	Gasket-Cylinder Head	1
13	94728	Screw-Cylinder Head	1
33	495856	Valve-Exhaust	1
34	495857	Valve-Intake	1
35	262811	Spring-Valve	1
40	224641	Retainer-Valve	1
45	262411	Tappet-Valve	1
Δ*51	272569	Gasket-Intake	1
166	94555	Stud-Rocker Arm	1
192	492160	Adjuster-Valve	1
238	262836	Cap-Valve	1
294	810104	Screw-Set	1
305	94786	Screw-Hex. Head	1
337	491055	Plug-Spark	1

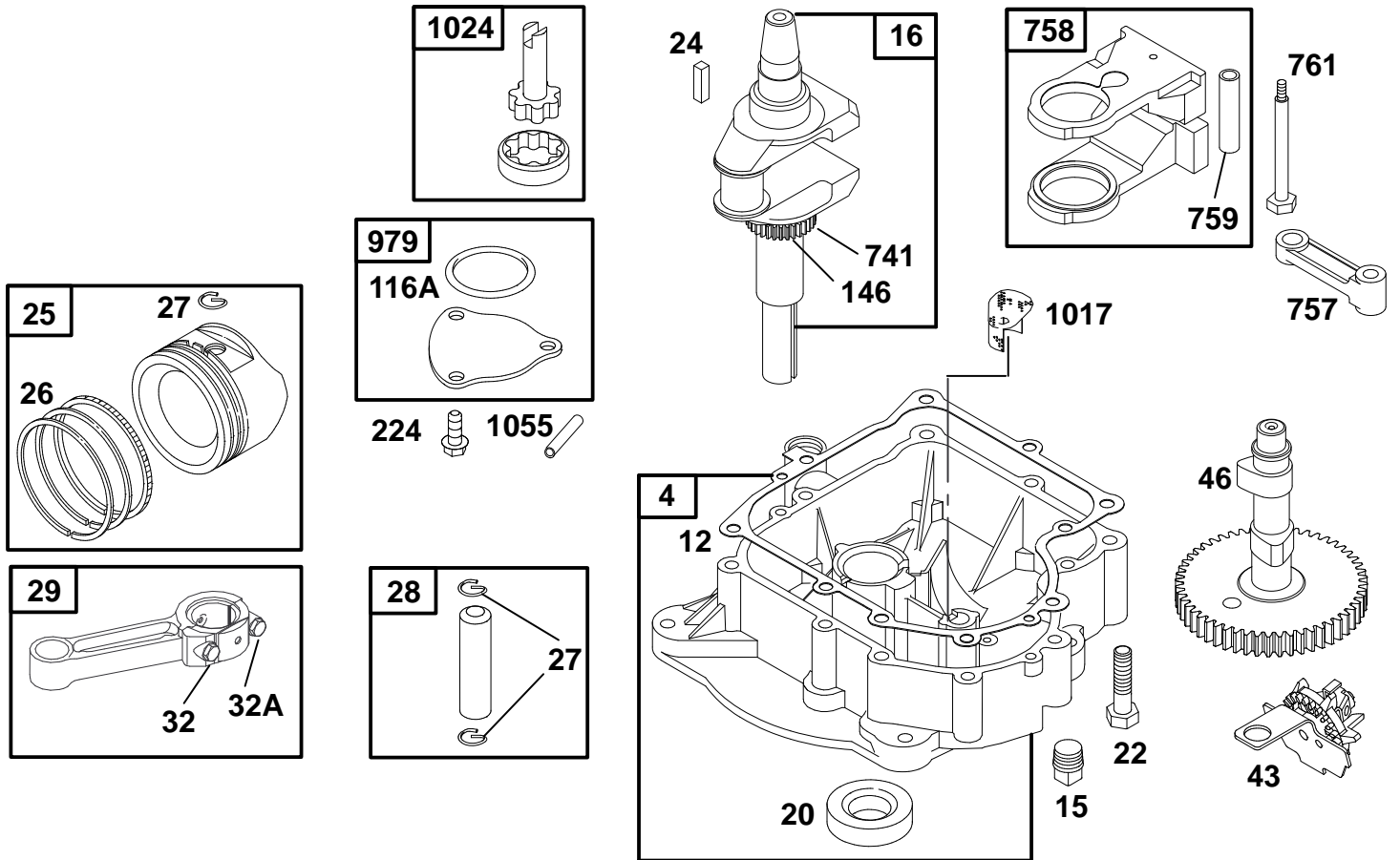
Ref. No.	Part No.	Description	No. Used
383	89838	Wrench-Spark Plug	1
635	280872	Elbow-Spark Plug	1
Δ*868	494435	Seal-Valve	1
Δ*868A	272610	Seal-Valve	1
871	262835	Bushing-Guide (Intake and Exhaust)	1
Δ*883	272293	Gasket-Exhaust	1
Δ*1022	272475	Gasket-Rocker Cover	1
1023	224552	Cover-Rocker	1
1026	494432	Rod-Push (Intake) Note: 495136 Rod-Push (Exhaust)	1
1029	224554	Arm-Rocker	1
1034	495248	Guide-Push Rod	1

★ Included in Gasket Set-Part No. 495993.

Δ Included in Valve Overhaul Kit-Part No. 495992.

● Included in Carburetor Kit-Part No. 499233.

◆ Included in Carburetor Gasket Set-Part No. 494385.



Assemblies include all parts shown in frames.

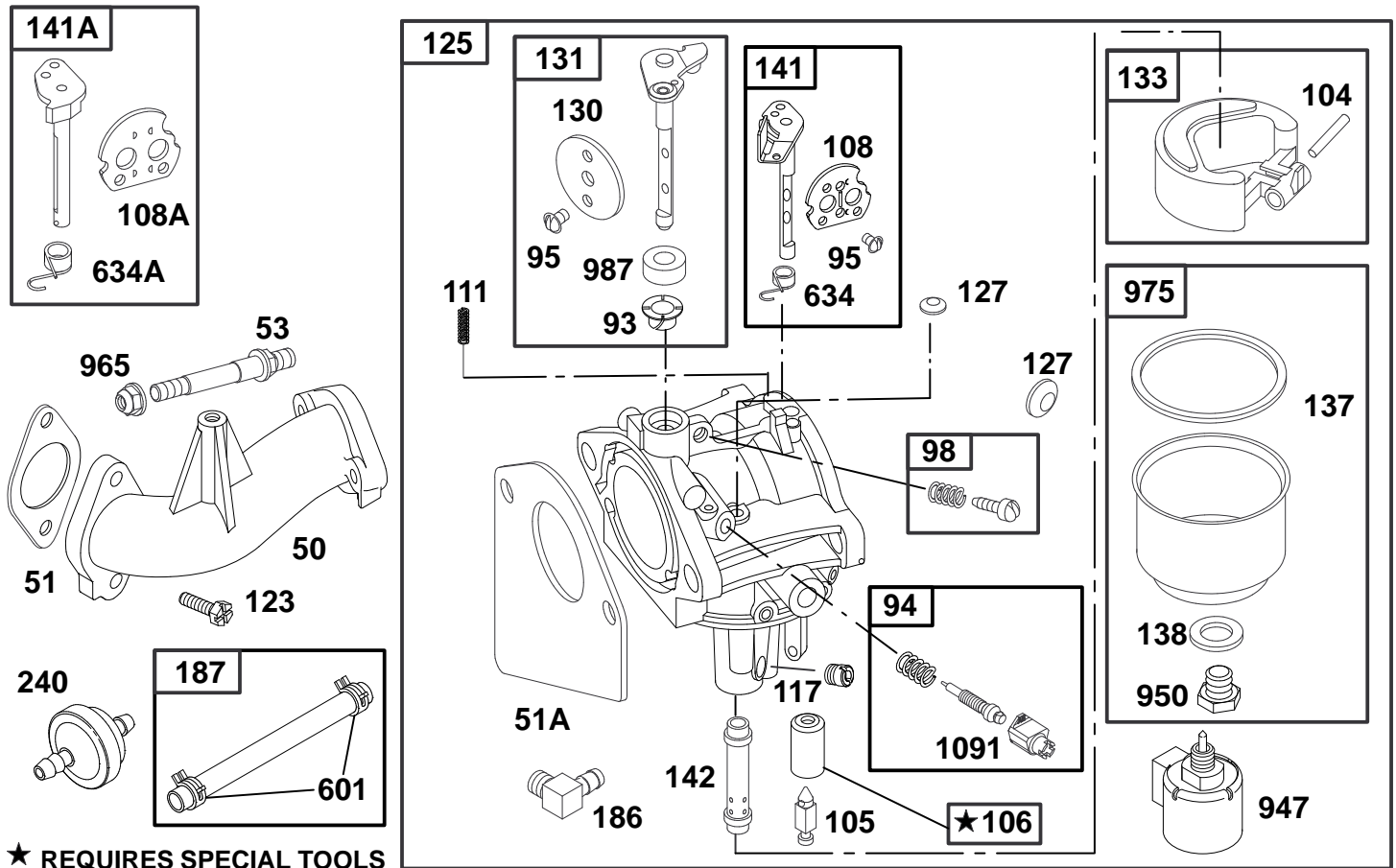
ENGINE BRIGGS & STRATTON MODEL 28N777-1174-E1

Ref. No.	Part No.	Description	No. Used
4	496742	Base-Engine	1
★12	271916	Gasket-Crankcase (.015" Thick, Std.)	1
★	271997	Gasket-Crankcase (.005" Thick)	1
★	271996	Gasket-Crankcase (.009" Thick)	1
15	94239	Plug-Oil Drain	1
16	498971	Crankshaft	1
★20	291675	Seal-Oil	1
22	94624	Screw-Sem	1
24	222698	Key-Flywheel	1
25	495860	Piston Assembly (Standard)	1
	495977	Piston Assy. (.010" O.S.)	1
	495978	Piston Assy. (.020" O.S.)	1
	495979	Piston Assy. (.030" O.S.)	1
26	495854	Ring Set (Standard)	1
	495852	Ring Set (.010" O.S.)	1
	495851	Ring Set (.020" O.S.)	1
	495855	Ring Set (.030" O.S.)	1
27	263129	Lock-Piston Pin	1
28	498319	Pin-Piston (Standard)	1
	498320	Pin-Piston (.005" O.S.)	1

Ref. No.	Part No.	Description	No. Used
29	494504	Rod-Connecting (Standard)	1
	495490	Rod-Conn. (.020" U.S.)	1
32	94695	Screw-Conn. Rod (1 7/8" Long)	1
32A	94648	Screw-Conn. Rod (1 5/8" Long)	1
43	490815	Governor/Oil Slinger	1
46	496884	Gear-Cam	1
★116A	281402	Seal-O-Ring	1
146	94196	Key-Timing Gear	1
224	94905	Screw-Torx® Hex.	1
741	262932	Gear-Timing	1
757	213998	Link-Counterweight	1
758	399891	Counterweight Assy.	1
759	230787	Pin-Counterweight	1
761	94593	Screw-Counterweight	1
979	496745	Cover-Pump	1
1017	225026	Screen-Oil Pump	1
1024	493884	Pump-Oil	1
1055	231931	Tube-Oil Pump	1

★ Included in Gasket Set-Part No. 495993.
 △ Included in Valve Overhaul Kit-Part No. 495992.

● Included in Carburetor Kit-Part No. 499233.
 ◆ Included in Carburetor Gasket Set-Part No. 494385.



★ REQUIRES SPECIAL TOOLS TO INSTALL. SEE REPAIR INSTRUCTION MANUAL. Assemblies include all parts shown in frames.

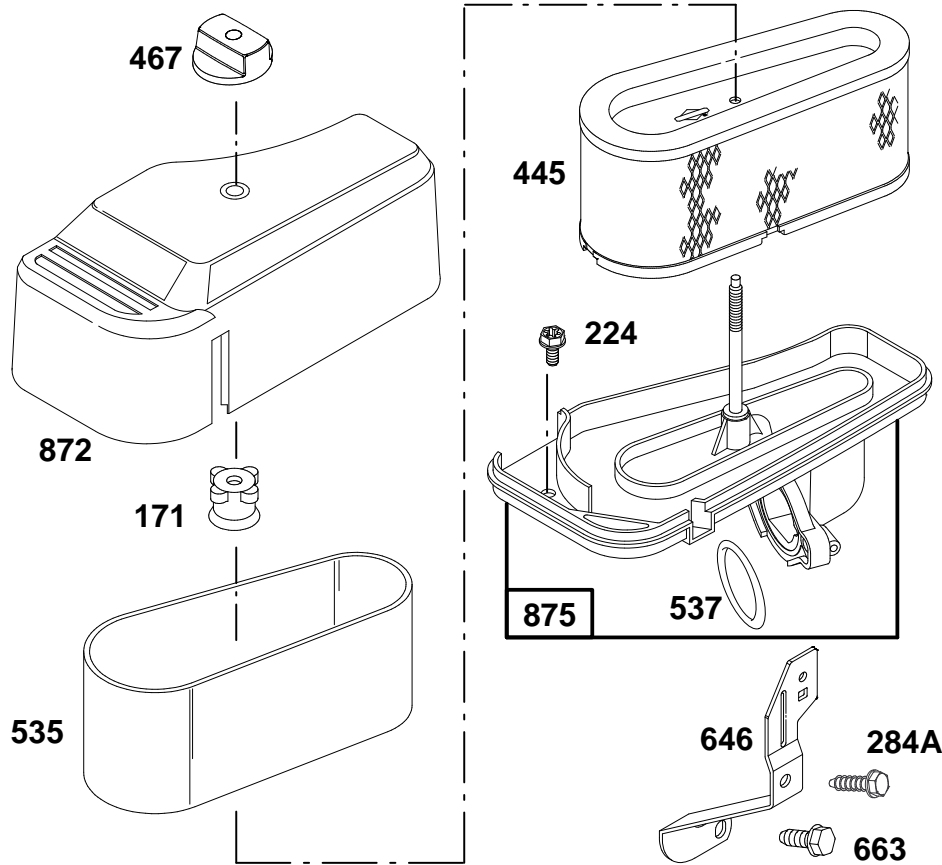
ENGINE BRIGGS & STRATTON MODEL 28N777-1174-E1

Ref. No.	Part No.	Description	No. Used
50	214047	Manifold-Intake	1
Δ★51	272569	Gasket-Carburetor	1
◆51A	272465	Gasket-Carburetor	1
53	94637	Stud-Carb. Mtg.	1
●93	281346	Bushing-Throttle Shaft	1
●95	94098	Screw-Round Head	1
94	498030	Valve-Idle Adjust	1
98	495800	Screw-Idle Adjust	1
●104	231789	Pin-Float Hinge	1
●105	231855	Valve-Inlet Needle	1
●106	231854	Seat-Inlet	1
108	224558	Valve-Choke (Manual)	1
108A	224540	Valve-Choke (Remote)	1
111	262715	Spring-Friction	1
●117	232118	Jet-Main (Standard)	1
	232119	Jet-Main (High Altitude)	1
123	94913	Screw-Elbow Mtg.	1
125	499153	Carburetor	1
●127		Plug-Welch (Sold in Kit Only)	1
130	224539	Valve-Throttle	1

Ref. No.	Part No.	Description	No. Used
131	494379	Shaft-Throttle	1
133	494381	Float-Carburetor	1
◆137	281165	Gasket-Float Bowl	1
◆138	281164	Washer-Float Bowl	1
141	495097	Shaft-Choke (Manual)	1
141A	495931	Shaft-Choke (Remote)	1
●142	232117	Nozzle-Carburetor	1
186	493496	Elbow-Fuel Pipe	1
187	298049	Line-Fuel (Cut to Length)	1
240	394358	Filter-Fuel	1
601	93053	Clamp-Hose	1
●634	494453	Seal-Spring Assembly	1
●634A	494455	Seal-Spring Assembly	1
947	497672	Solenoid	1
950	94642	Screw-Fuel Bowl	1
965	94010	Nut-Hex.	1
975	495933	Bowl-Float	1
●987	281166	Seal-Throttle Shaft	1
1091	281364	Cap-Limiter	1

★ Included in Gasket Set-Part No. 495993.
 Δ Included in Valve Overhaul Kit-Part No. 495992.

● Included in Carburetor Kit-Part No. 499233.
 ◆ Included in Carburetor Gasket Set-Part No. 494385.



Assemblies include all parts shown in frames.

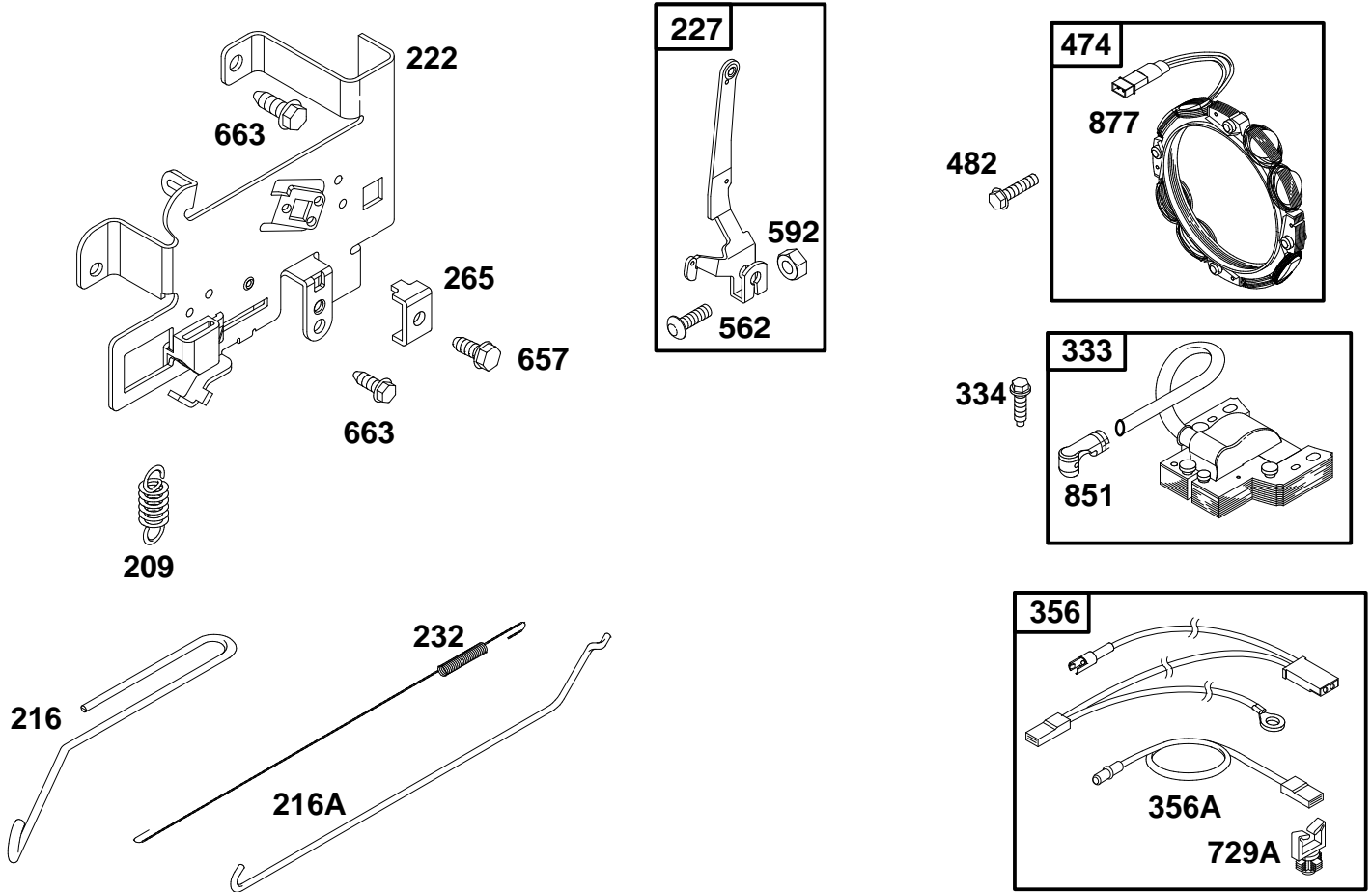
ENGINE BRIGGS & STRATTON MODEL 28N777-1174-E1

Ref. No.	Part No.	Description	No. Used
171	281051	Nut—Air Cleaner Mtg.	1
224	94905	Screw—Torx® Hex.	1
284A	94704	Screw—Air Cleaner	1
445	496894	Filter—Air	1
467	493903	Knob—Air Cleaner	1
535	272403	Filter—Air	1

Ref. No.	Part No.	Description	No. Used
★537	281106	Gasket—Air Cleaner	1
646	224546	Brace—Air Cleaner	1
663	94929	Screw—Hex. Hd.	1
872	281361	Cover—Air Cleaner	1
875	495862	Body—Air Cleaner	1

★ Included in Gasket Set—Part No. 495993.
 Δ Included in Valve Overhaul Kit—Part No. 495992.

● Included in Carburetor Kit—Part No. 499233.
 ◆ Included in Carburetor Gasket Set—Part No. 494385.



Assemblies include all parts shown in frames.

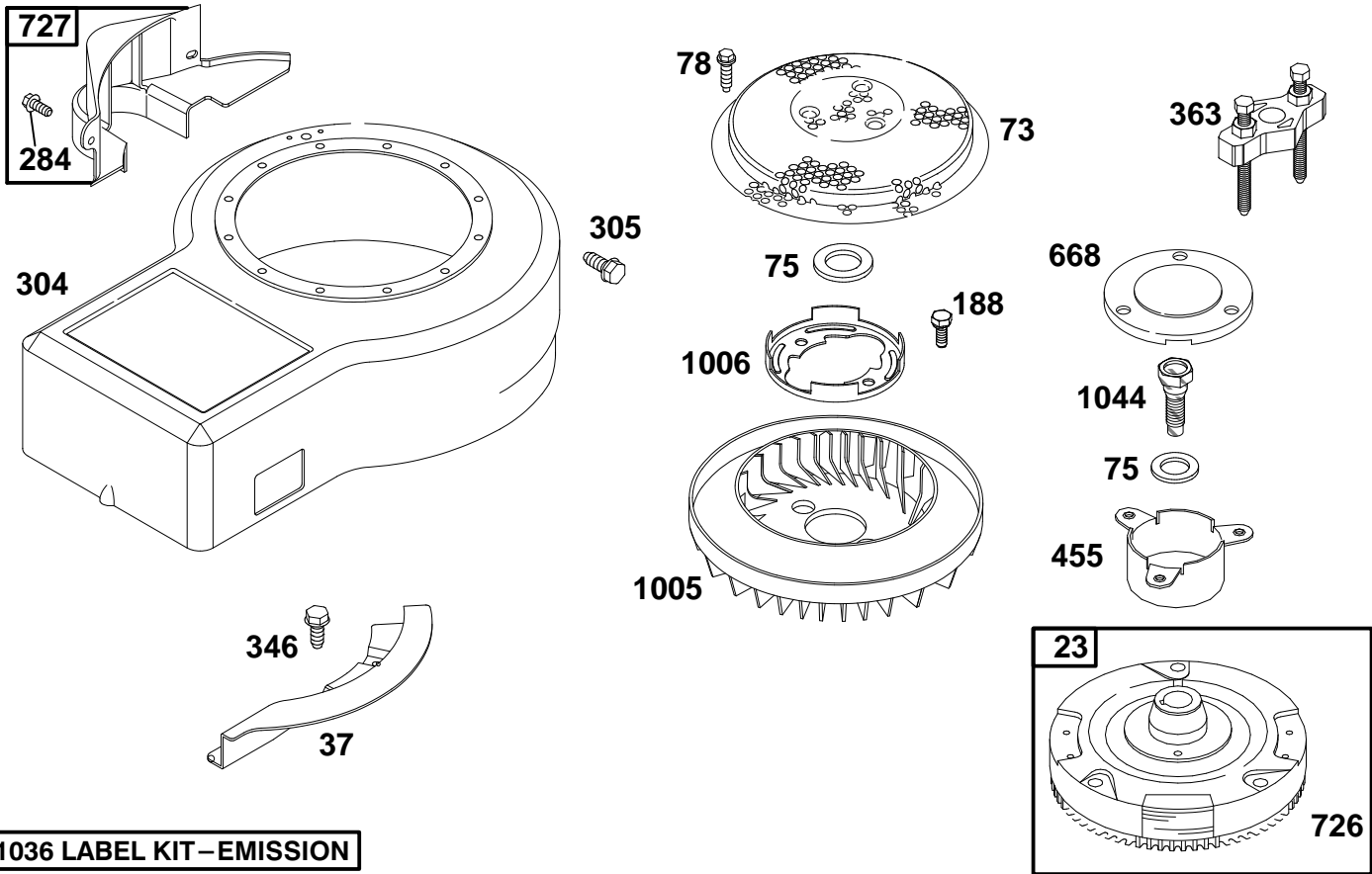
ENGINE BRIGGS & STRATTON MODEL 28N777-1174-E1

Ref. No.	Part No.	Description	No. Used
209	260695	Spring-Governor	1
216	262766	Link-Choke	1
216A	262767	Link-Governor	1
222	495611	Plate-Gov. Control	1
227	493935	Lever Assy.-Governor	1
232	262785	Spring-Governor Link	1
265	221535	Clamp-Casing	1
333	495859	Armature-Magneto	1
334	94731	Screw-Sem	1
356	497708	Wire-Stop	1
356A	494705	Wire-Ground	1

Ref. No.	Part No.	Description	No. Used
474	393474	Alternator	1
482	93621	Screw-Sem	1
562	94907	Bolt-Governor Lever	1
592	231978	Nut-Hex.	1
657	94906	Screw-Sem	1
663	94929	Screw-Hex. Hd.	1
729A	281390	Clip-Lead Wire	1
851	493880	Terminal-Ignition Cable	1
877	393456	Wire-Alternator	1

★ Included in Gasket Set-Part No. 495993.
 Δ Included in Valve Overhaul Kit-Part No. 495992.

● Included in Carburetor Kit-Part No. 499233.
 ◆ Included in Carburetor Gasket Set-Part No. 494385.



Assemblies include all parts shown in frames.

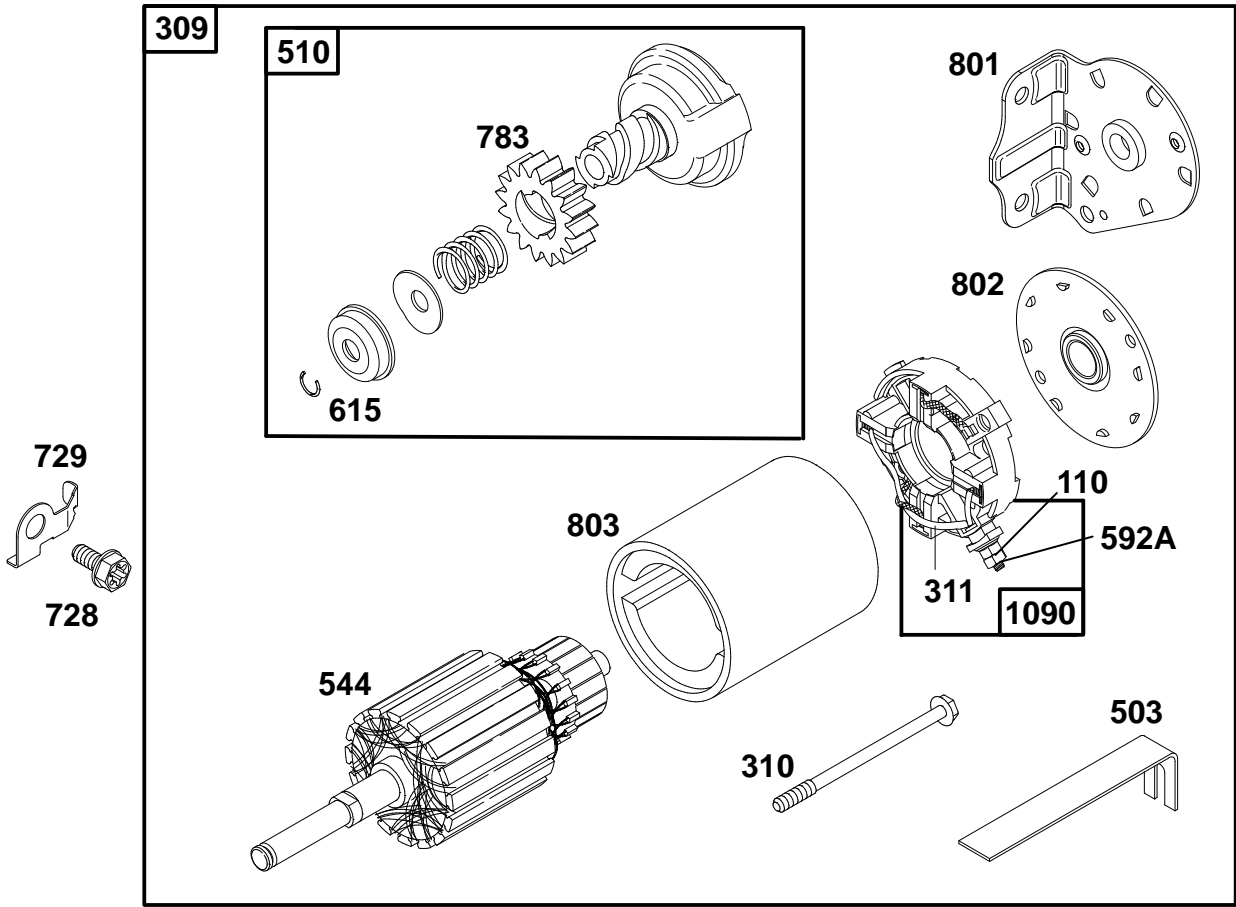
ENGINE BRIGGS & STRATTON MODEL 28N777-1174-E1

Ref. No.	Part No.	Description	No. Used
23	492326	Flywheel	1
37	224502	Guard-Flywheel	1
73	224948	Screen-Rotating	1
75	225136	Washer-Spring	1
78	94626	Screw-Sem	1
188	94627	Screw-Sem	1
284	94903	Screw-Hex. Head	1
304	496431	Housing-Blower	1
305	94786	Screw-Hex. Head	1
346	94896	Screw-Hex. Head	1

Ref. No.	Part No.	Description	No. Used
363	19203	Puller-Flywheel	1
455	222561	Cup-Flywheel	1
668	280848	Spacer	1
726	399676	Gear-Ring (Includes Mtg. Hardware)	1
727	490324	Guard-Flywheel	1
1005	281400	Fan-Flywheel	1
1006	224413	Retainer-Fan	1
1036	499364	Label Kit-Emission	1
1044	94673	Screw-Shoulder	1

★ Included in Gasket Set-Part No. 495993.
 Δ Included in Valve Overhaul Kit-Part No. 495992.

● Included in Carburetor Kit-Part No. 499233.
 ◆ Included in Carburetor Gasket Set-Part No. 494385.



Assemblies include all parts shown in frames.

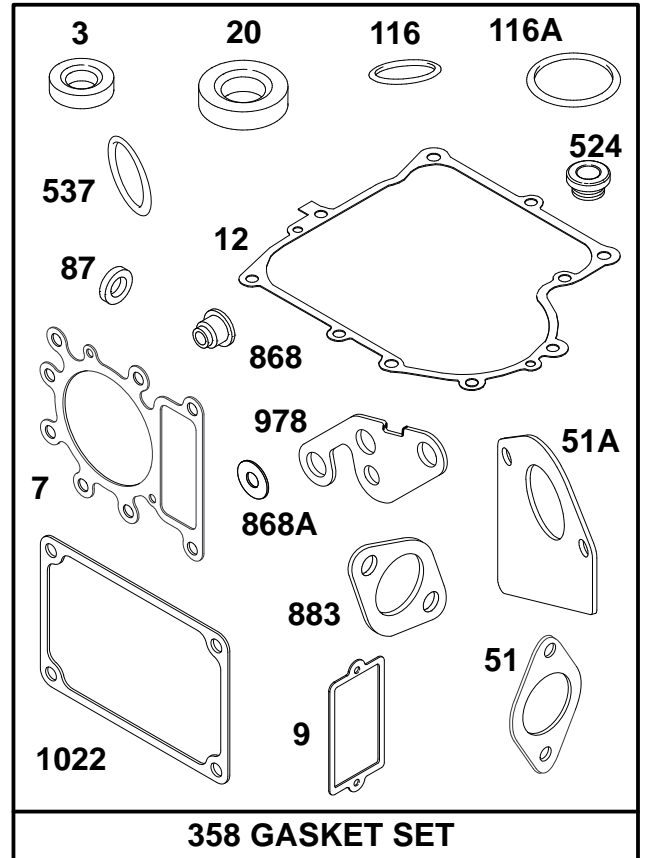
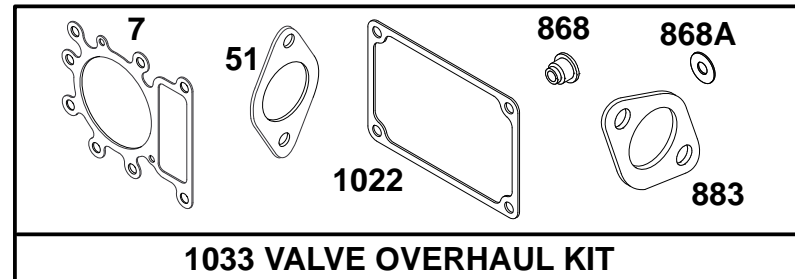
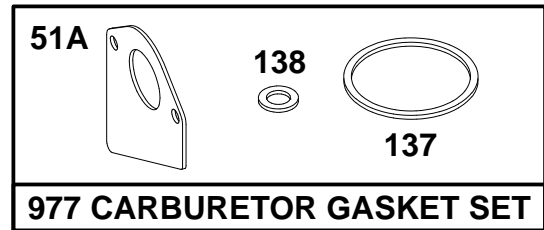
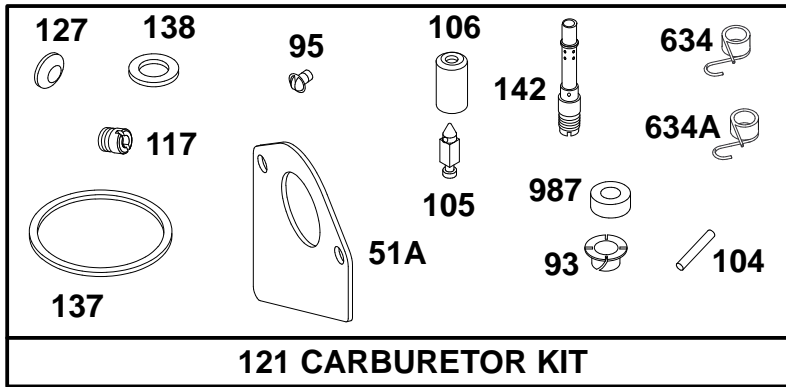
ENGINE BRIGGS & STRATTON MODEL 28N777-1174-E1

Ref. No.	Part No.	Description	No. Used
110	225137	Washer	1
309	497595	Motor-Starter	1
310	94003	Bolt-Thru	1
311	497608	Brush Set	1
503	806000	Strap-Starter	1
510	497606	Drive-Starter	1
544	497603	Armature-Starter	1
592A	92278	Nut-Hex.	1

Ref. No.	Part No.	Description	No. Used
615	263080	Retainer	1
728	94951	Screw-Torx®	1
729	225170	Clip-Wire	1
783	280104	Gear-Starter	1
801	394856	Cap-Drive	1
802	497607	Plate-Cover	1
803	497604	Housing-Starter	1
1090	497605	Cap-End	1

★ Included in Gasket Set-Part No. 495993.
 ▲ Included in Valve Overhaul Kit-Part No. 495992.

● Included in Carburetor Kit-Part No. 499233.
 ◆ Included in Carburetor Gasket Set-Part No. 494385.



Assemblies include all parts shown in frames.

ENGINE BRIGGS & STRATTON MODEL 28N777-1174-E1

Ref. No.	Part No.	Description	No. Used
★3	391086	Seal—Oil	1
△★7	273280	Gasket—Cylinder Head	1
★9	27803	Gasket—Valve Cover	1
★12	271916	Gasket—Crankcase (.015" Thick)	1
★	271997	Gasket—Crankcase (.005" Thick)	1
★	271996	Gasket—Crankcase (.009" Thick)	1
★20	291675	Seal—Oil	1
△★51	272569	Gasket—Carburetor	1
◆★51A	272465	Gasket—Carburetor	1
★87	491323	Seal—Governor	1
●93	281346	Bushing—Throttle Shaft	1
●95	94098	Screw—Throttle	1
●104	231789	Pin—Float Hinge	1
●105	231855	Valve—Inlet Needle	1
●106	231854	Seat—Inlet	1
★116	270920	Seal—O-Ring	1
★116A	281402	Seal—O-Ring	1
●117	232118	Jet—Main	1

Ref. No.	Part No.	Description	No. Used
121	499233	Carburetor Kit	1
●127		Plug—Welch (Sold in Kit Only).	1
◆◆137	281165	Gasket—Float Bowl	1
◆◆138	281164	Washer—Float Bowl	1
●142	232117	Nozzle—Carburetor	1
358	495993	Gasket Set	1
★524	281370	Seal—Fill Tube	1
★537	281106	Gasket—Air Cleaner	1
●634	494453	Seal—Spring Assembly	1
●634A	494555	Seal—Spring Assembly	1
△★868	494435	Seal—Valve	1
△★868A	272610	Seal—Valve	1
△★883	272293	Gasket—Exhaust	1
977	494385	Carburetor Gasket Set	1
★978	272888	Gasket—Filter Adapter	1
●987	281166	Seal—Throttle Shaft	1
△★1022	272475	Gasket—Rocker Cover	1
1033	495992	Kit—Valve Overhaul	1

★ Included in Gasket Set—Part No. 495993.
 △ Included in Valve Overhaul Kit—Part No. 495992.

● Included in Carburetor Kit—Part No. 499233.
 ◆ Included in Carburetor Gasket Set—Part No. 494385.

Toro Part Number Index

Part No.	Page No.	Ref. No.	Qty.	Description
7228	15	11:3	2	Bulb-Light
104047	6	3:1	1	Bushing Sm
104048	6	3:2	1	Valve-Fuel
111419	4	12	1	Bearing-Washer
111686	15	11:2	2	Socket Assembly
614249	2	38	1	Strap-Tie Sm
701178	1	1	2	Cap-Protector
701756	11	41	2	Wheel-Gage (Only On: 71220)
702366	15	6	1	Clip-Wire Retainer
9266714	2	36	2	Screw-HWH
9266714	4	25	2	Screw-HWH
9266714	6	38	1	Screw-HWH
9266714	6	43	2	Screw-HWH
9266714	15	9	3	Screw-HWH
9267154	6	16	1	Screw 3/8-16x3/4
3-6498	4	21	4	Washer-Thrust
3-6498	4	24	2	Washer-Thrust
3-6498	5	17	1	Washer-Thrust
3-6498	9	10	2	Washer-Thrust
5-4460	3	4	1	Washer-Pivot
5-4460	4	17	1	Washer-Pivot
5-4460	6	9	4	Washer-Pivot
5-4460	7	5	1	Washer-Pivot
5-4460	7	35	1	Washer-Pivot
7-0030	12	31	1	Bolt-Shoulder
7-0030	14	11	3	Bolt-Shoulder
7-0036	9	11	2	Key
7-5461	8	12	1	Spacer
26-0671	6	12	1	Screw-Blade
26-0671	10	19	2	Screw-Blade
26-6701	9	20	1	Spring-Brake Return
27-0220	6	2	4	Screw-Special
27-8890	7	1	1	Spring-Return
28-0540	2	6	2	Bolt-Shoulder
28-2480	4	28	2	Washer
28-2480	9	12	2	Washer
28-8080	15	1	1	Boot-Terminal
37-8770	3	1	4	Bolt-Shoulder
37-8770	7	31	1	Bolt-Shoulder
38-1420	15	5	1	Switch-Seat
38-7820	10	6	4	Bearing-Ball
44-8110	15	4	1	Wire ASM
46-5780	3	14	1	Switch-Starter
46-6290	13	21	1	O Ring
46-8090	2	13	7	Screw-Plastite
46-8091	2	3	3	Special-HWH
47-2963	6	4	1	Hose-Gas
52-2891	4	11	2	Bushing-Steering Link
55-4300	11	32	2	Decal (Only On: 71198)
55-9321	8	5	1	Cable-Clutch
56-2540	15	29	1	Tube-Batt Drain/80-2600
56-6591	11	40	2	Wheel Bolt (Only On: 71220)
56-9830	12	2:2	1	Pad-Brake
57-6950	10	27	1	Spring
61-9780	4	26	2	Cap-Hub
61-9780	9	14	2	Cap-Hub
61-9980	13	8	2	Screw-Adjusting
62-3661	10	8	2	Bearing Spacer
63-8360	3	2	1	Key-Ignition w/Shield
63-8360	15	25	1	Key-Ignition w/Shield
65-2920	7	20	1	Pad-Pedal
65-7210	14	23	1	Spacer

*Not Illustrated

Toro Part Number Index (cont.)

Part No.	Page No.	Ref. No.	Qty.	Description
66-0120	6	1:1	1	Knob
67-0710	12	33	2	Ball-Swivel Stop
68-3650	11	33	1	Decal-Deflector Danger (Only On: 71198)
68-3660	11	31	1	Decal -, Shield Danger (Only On: 71198)
76-1340	1	32	1	Decal - USA (Only On: 71198)
76-2160	10	5	4	Kicker Plate
79-1600-03	10	23	1	Baffle Wa
79-1640-03	10	11	1	Baffle Wa
79-3061	10	15	2	Blade-19.32 Rec
79-3140	11	35	1	Decal-Danger (Only On: 71198)
80-0510-03	10	17	2	Blade Stiffener
80-2240	15	31	1	Emblem-Grille Whlhorse
80-2600	15	3	1	Battery
80-4341	10	14	2	Spindle Shaft
80-4360	10	13	2	Shield-Bearing
80-4380	10	12	2	Spacer
80-6990	13	9	4	Washer - Hardened
80-6990	14	8	4	Washer - Hardened
84-5610	7	8	1	Guide-Cable
84-5610	8	25	1	Guide-Cable
88-0890	4	37	1	Grip-Bag Handle
88-3880	6	3	1	Gas Tank ASM
88-3950	3	25	1	Seat - Medium Back V411
88-3960	15	12	1	Lens-Headlight
88-3970	15	11	1	Reflector & Lamp ASM
88-3980	6	31	1	Gas Cap Assembly
88-4020	13	7	1	RH Deck Belt Guide
88-4030	13	2	1	LH Deck Belt Guide
88-4040	15	30	1	Box-Battery
88-4050	2	12	1	Duct-Air
88-4070	4	29:1	2	Tire (Only On: Serial No. 990001-9905000)
88-4090	9	9:1	2	Tire (Only On: Serial No. 9000001-9005000)
88-4140	2	23	2	Nut-Wedge
88-4150	5	24	1	Plug
88-4160	2	24	2	Rod-Clamp Pivot
88-4170	2	20	1	Rod-Tower Pivot
88-4190	5	4	1	Bushing - Sliding
88-4230	14	13	2	Trunnion-HOC
88-4340	6	1	1	Control-Throttle
88-4350	6	30	1	Cable-Throttle
88-4370	4	29:2	2	Rim ASM
88-4390	9	9:2	2	Rim Assembly
88-4400	4	29:2:2	4	Bearing-Wheel
88-4410	6	20	1	Gasket-Muffler
88-4430	10	29	1	Recycler Cover
88-4490	6	48	1	Reducer-Throttle Rpm (Only On: 71220)
88-4510	10	7	2	Diecast Alum Spindle
88-4550	10	30:1	1	38" Deflector-Deck (Only On: 71198)
88-4590	12	1	2	Bolt-Shoulder
88-4620-03	1	11	1	Bracket-Idler Pivot
88-4630-03	1	24	1	Plate-Eng Mtg
88-4670	4	9	1	Bushing - Eccentric
88-4730	14	16	2	Clamp-HOC Pivot
88-4810	7	13	1	Clamp-Shift Pivot
88-4810	8	4	2	Clamp-Shift Pivot
88-4820-03	3	11	2	Bracket-Seat Hinge
88-4830	4	34	1	Link-Drag
88-4840	9	4	1	Pulley - Transmission
88-4870-03	12	32	1	Arm Idler Deck
88-4880	15	17	1	Spacer
88-4980	12	23	1	Bushing Idler Arm
88-5000-03	7	21	1	Pedal-Clutch/Brake

*Not Illustrated

Toro Part Number Index (cont.)

Part No.	Page No.	Ref. No.	Qty.	Description
88-5010	4	7	1	Spacer – Steering Rack
88-5020-03	3	19	1	Plate–Shift Gate
88-5030-03	3	9	1	Gate–HOC
88-5070	12	29	1	Idler Belt Guide
88-5110-03	14	22	1	Pivot Wa
88-5130-03	4	5	1	Bracket–Steering Rack
88-5150	5	16	1	Bearing–Flange
88-5160	3	21	1	Cover–Shift Gate (Only On: 71198)
88-5170	3	7	1	Cover – HOC (Only On: 71198)
88-5190-03	2	25	1	Deck Engage Lev Wa
88-5200	4	10	1	Steering Rack Wa
88-5220	3	17	1	Mat–RH Foot
88-5240	3	16	1	Mat–LH Foot
88-5260-03	1	10	2	Bracket–Transaxle Mtg
88-5270	7	29	1	Rod–Clutch/Brake
88-5330	12	21	2	Pulley Deck 38”
88-5340	8	13	1	Lever–Shift
88-5380	4	32	1	Tie Rod – Steering
88-5450	14	12	2	Rod–Hanger Rear
88-5470	4	23	2	Spacer–Front Axle
88-5500	7	15	1	Rod–Pedal Pivot
88-5510	4	35	1	Rod–Parking Brake
88-5520-03	4	36	1	Bracket–Parking Brake
88-5540	12	26	1	RH Deck Brake Rod
88-5550	12	3	1	LH Deck Brake Rod
88-5560	7	32	1	Guide–Idler Belt
88-5570-03	14	6	2	Link–HOC Adjusting
88-5630	12	30	1	Flat Idler Pulley
88-5680	7	33	1	Pulley–Idler
88-5740-03	11	42	1	RH Whl Deck Brkt (Only On: 71220)
88-5900	14	3	1	Link–HOC
88-5910	12	5	2	Torsion Spring
88-5930	8	16	1	Keeper–Cable
88-5970	12	10	1	Hook Return Spring
88-6040-03	2	18	1	Bracket–RH Hinge
88-6050-03	2	7	1	Bracket–LH Hinge
88-6070	7	30	1	Arm–Idler
88-6100	12	2	2	Brake ASM
88-6130	12	6	1	Deck Engage Spring
88-6220	1	4	2	Spring – Compression
88-6250	12	18	1	V – Belt
88-6270	9	5	1	V – Belt
88-6330	7	7	1	Spring – Extension
88-6380	5	25	1	Long Steering Shaft Wa
88-6460	14	17	1	Spring – Extension
88-9830	15	24	1	Switch–Ignition
88-9932	15	19	2	Switch–Micro
92-2461	2	31	1	Decal – Throttle (Only On: 71198)
92-2462	2	32	1	Decal – Deck Engage (Only On: 71198)
92-5730	2	31	1	Decal – Throttle (Only On: 71220)
92-5782	2	15	1	Foil Tape
92-7889-03	4	30	1	RH Spindle Wa
92-7890-03	4	18	1	LH Spindle Wa (Only On: 71198)
92-8650	2	14	1	Hood–V–Chassis Toro
92-8875	15	26	1	Switch – Rocker
92-8934	12	8	1	Spring – Extension
92-9520	11	36	1	Decal–Recycler Deck 38”
92-9674	3	5	1	Knob
92-9845	15	8	1	Solenoid
93-0231	10	30:4	4	Screw–PPH (Only On: 71220)
93-0317	10	30	1	Deflector ASM – 38” (Only On: 71198)
93-0539	15	15	4	Screw–HH

*Not Illustrated

Toro Part Number Index (cont.)

Part No.	Page No.	Ref. No.	Qty.	Description
93-1122	10	28	1	Decal - Danger (Only On: 71198)
93-1122	10	30:2	1	Decal-Danger (Only On: 71198)
93-3240	15	20	1	Plunger-Seal
93-3809	6	37	1	Bracket- Ground
93-3822-03	14	1	1	Lever Wa
93-3849	2	37	1	Brkt-Upper Cable
93-3854	6	7	3	Guide - Belt Engine
93-3855	6	24	1	Guide - Belt RH
93-3864-03	2	16	1	Shield - Heat
93-3880-03	6	42	1	Shield-Muffler
93-3881-03	13	4	1	Frt Deck Susp Pan
93-3882	6	41	1	Clip - Tinnerman, U
93-3896-03	11	46	1	Brkt,LH Deckwheel (Only On: 71220)
93-6668	15	3:3	1	Decal-Battery
93-6673	2	32	1	Decal - Deck Engage (Only On: 71220)
93-6674	11	32	2	Decal - Warning (Only On: 71220)
93-6675	1	33	1	Decal - Gear Instr. Intl (Only On: 71220)
93-6677	10	31	1	Decal - Shield Danger (Only On: 71220)
93-6679	11	37	1	Decal - Belt Routing, 38"
93-7009	11	33	1	Decal-Deflector Danger (Only On: 71220)
93-7010	10	28	2	Decal - Danger (Only On: 71220)
93-7010	10	30:2	1	Decal-Danger (Only On: 71220)
93-7276	15	3:2	1	Decal-Danger
93-7656	3	21	1	Cover - Shift, Intl (Only On: 71220)
93-7657	3	7	1	Cover - HOC, Intl (Only On: 71220)
93-7695	10	30	1	ASM - 38" Deflector, Intl (Only On: 71220)
93-7696	10	30:3	2	Kicker-Ce (Only On: 71220)
93-8450-03	6	45	1	Wa - Exhaust Shield
93-8495	10	30:1	1	38" Deflector (Only On: 71220)
93-8741	15	11:1	1	Reflector-Headlight
93-9354	15	3:1	1	Decal-Battery
93-9847	13	12	2	Spacer
94-1951	6	39	1	Latch - Hood
94-1952	6	28	1	Rod - Gas Tank
94-1953	6	15	1	Muffler - Exhaust
94-1962-03	4	31	1	Axle Wa-Front
94-1963	6	11	1	ASM - Engine Pulley
94-1968	8	20	1	Lever-Shift Pivot
94-1969	9	19	2	Strap - Torque
94-1970-03	13	14	1	Brkt-RH Deck Susp
94-1971-03	13	6	1	Brkt - LH Deck Susp
94-1980	2	39	2	Foam - Hood
94-1984	2	11	1	Latch - Pin
94-1991-03	8	1	1	Wa-Shift Lever
94-1993-10	8	8	1	Wa-Shift Pivot*
94-1997	8	26	1	Bushing - Shift Lever
94-4294	7	2	1	Spring - Brake
94-4926	7	36	1	Bracket - Belt Guide
94-5362	15	33	1	Boot - Terminal Insulator
94-5431	8	9	1	Link - Shift
94-5433	7	6	1	Bracket - Belt Guide
94-5565	2	2	1	Knob - Shift
94-5565	8	24	1	Knob - Shift
94-5565	14	24	1	Knob - Shift
94-5823	13	5	2	Bolt - Shoulder
94-6022	9	7	1	Transaxle
95-0807	2	34	1	Decal - Hood Right
95-0808	2	33	1	Decal - Hood Left
95-0809	1	35	1	Decal-Rear Body
95-1653	1	9	1	Switch - Single Pole
95-1661	10	26	1	Rod - Pivot
95-2747	13	20	1	Fitting - Washout

*Not Illustrated

Toro Part Number Index (cont.)

Part No.	Page No.	Ref. No.	Qty.	Description
95-3270	13	25	1	Connector – Hose (Only On: 71198)
95-7652	15	34	1	Light – Indicator
98-1459	5	23	1	Decal – Urethane, Toro
98-1467	5	1	1	Wheel – Steering
98-1468	5	1:2	1	Cover – Steering Wheel
98-3575-03	1	21	1	Support – Front Axle
98-7249	15	22	1	Relay – Spdt
99-1935	15	18	1	Harness – Headlight
99-1947	2	1	1	Tower – Steering [Service]
99-2953-03	1	8	1	Plate – Switch
99-2956-03	4	16	1	Bracket – Module
99-2957-03	1	5	1	Panel – Rear Hitch
99-2958-03	1	13	1	Rail – LH Frame
99-2959-03	1	25	1	Rail – RH Frame
99-2971	1	28	1	Body ASM – Rear
99-2978	15	23	1	Harness – Wire
99-2985	3	3:2	1	Decal – Danger (Only On: 71198)
99-2986	3	3:2	1	Decal – Danger Intl (Only On: 71220)
99-2988	4	29:1	2	Tire (Only On: Serial No. 9905001 & Up)
99-2996	9	9:1	2	Tire (Only On: Serial No. 9005001 & Up)
99-3700	4	19	1	Module – Nmir
99-5339	3	3:3	1	Decal – Nmir Switch (Only On: 71198)
99-5340	3	3:3	1	Decal – Nmir Switch Intl (Only On: 71220)
99-5826	2	35	1	Cable ASM – Deck Engage
99-5830	3	3	1	Support ASM – Seat (Only On: 71198)
99-5831	3	3	1	Support ASM – Seat (Only On: 71220)
99-5847	10	3	1	Deck ASM – Service, Intl (Only On: 71220)
99-5912	2	29	2	Decal – 1438 XI
99-6059	15	35	1	Clip – Retainer
99-6094	1	33	1	Decal – Instruction (Only On: 71198)
99-8055	6	35	1	Decal – Engine
99-8139	2	30	1	Decal – Ignition/Lights (Only On: 71198)
99-8141	2	30	1	Decal – Ignition/Lights (Only On: 71220)
218-461	15	24:2	1	Nut – F/W
218-461	3	14:1	1	Nut – F/W And Other
218-560	15	3:5	6	Cap – Battery
218-578	16		3	Fuse – 10a
231-91	9	9:99	2	Tube
232-27	9	9:2:1	2	Stem – Valve
232-39	4	29:99	2	Tube
237-27	4	29:2:1	2	Stem – Valve
2412-98	6	5	2	Clamp
302-5	4	29:2:3	2	Zerk
302-26	4	8	1	Zerk
321-2	2	5	4	Screw – HH
321-4	5	7	2	Screw – HH
321-4	10	9	2	Screw – HH
321-4	15	2	2	Screw – HH
321-15	11	38	2	Screw – HH
322-1	13	23	2	Screw – HH (Only On: 71198)
322-3	1	7	22	Screw – HH
322-3	1	12	2	Screw – HH
322-3	2	28	2	Screw – HH
322-3	3	10	4	Screw – HH
322-3	6	46	1	Screw – HH
322-3	7	3	1	Screw – HH
322-3	7	14	2	Screw – HH
322-3	8	6	3	Screw – HH
322-3	9	21	2	Screw – HH
322-3	14	19	4	Screw – HH
322-3	11	44	6	Screw – HH (Only On: 71220)
322-5	1	2	2	Screw – HH

*Not Illustrated

Toro Part Number Index (cont.)

Part No.	Page No.	Ref. No.	Qty.	Description
322-5	6	10	2	Screw-HH
322-5	12	20	2	Screw-HH
322-6	7	4	1	Screw-HH
322-9	6	6	3	Screw-HH
322-12	9	15	4	Screw-HH
322-12	13	16	2	Screw-HH
322-39	14	2	1	Screw-HH
323-5	10	24	2	Screw-HH
323-9	13	13	2	Screw-HH
323-10	8	2	1	Screw-HH
323-11	7	34	1	Screw-HH
323-12	12	27	1	Screw-HH
323-13	4	2	2	Screw-HH
329-23	8	10	1	Screw-HH
3219-6	12	22	2	Nut-Hex
3229-1	13	22	2	Screw-CARR
3230-1	10	21	1	Screw-CARR
3230-2	4	6	4	Screw-CARR
3230-3	4	4	1	Screw-CARR
3230-3	7	22	1	Screw-CARR
3230-3	8	17	1	Screw-CARR
3231-4	4	3	1	Screw-CARR
3253-3	8	11	1	Washer-Lock/Sp
3253-4	6	21	2	Washer-Lock/Sp
3253-4	6	47	1	Washer-Lock/Sp
3253-22	6	13	1	Washer-Lock/Sp
3254-5	3	14:2	1	Washer-Lock/Int
3254-5	15	24:1	1	Washer-Lock/Int
3255-7	15	14	2	Washer-Lock/Ext
3255-8	6	23	1	Washer-Lock/Ext
3256-1	13	19	2	Washer-Flat
3256-22	5	6	2	Washer-Flat
3256-22	13	10	2	Washer-Flat
3256-23	1	3	4	Washer-Flat
3256-23	2	27	2	Washer-Flat
3256-23	7	9	2	Washer-Flat
3256-23	7	23	1	Washer-Flat
3256-23	8	14	2	Washer-Flat
3256-23	9	16	4	Washer-Flat
3256-23	9	18	4	Washer-Flat
3256-24	2	21	2	Washer-Flat
3256-24	4	20	4	Washer-Flat
3256-24	12	28	2	Washer-Flat
3256-24	14	5	4	Washer-Flat
3256-25	4	13	4	Washer-Flat
3256-25	6	14	1	Washer-Flat
3256-25	8	19	1	Washer-Flat
3256-26	7	18	1	Washer-Flat
3256-68	12	19	1	Washer-Flat
3257-23	9	3	1	Key-Woodruff
3269-26	3	13	2	Washer-Flat
3269-26	3	18	2	Washer-Flat
3272-10	4	14	4	Pin-Cotter
3272-10	7	24	1	Pin-Cotter
3272-12	4	27	2	Pin-Cotter
3274-10	6	22	2	Screw-HSH
3290-282	3	8	2	Rivet-Stl Pop
3290-282	3	20	2	Rivet-Stl Pop
3290-282	12	2:1	2	Rivet-Stl Pop
3290-299	15	32	1	Clip
3290-307	2	19	2	Cotter-Hairpin
3290-307	14	4	7	Cotter-Hairpin

*Not Illustrated

Toro Part Number Index (cont.)

Part No.	Page No.	Ref. No.	Qty.	Description
3290-354	15	16	2	Nut-Speed
3290-392	1	15	2	Screw - Hex Head Slot
3290-465	10	18	2	Washer-Belleville
3290-479	3	6	16	Fastener-Panel
3290-479	3	22	4	Fastener-Panel
3290-496	2	8	2	Nut-Retainer
3296-1	1	14	2	Nut-Lock Ni
3296-3	8	7	2	Nut-Lock Ni
3296-16	13	18	2	Nut-Lock Ni
3296-23	13	17	2	Nut-Lock Ni
3296-29	1	6	24	Nut-Lock Ni
3296-29	1	16	2	Nut-Lock Ni
3296-29	2	26	2	Nut-Lock Ni
3296-29	3	12	6	Nut-Lock Ni
3296-29	4	1	5	Nut-Lock Ni
3296-29	6	29	4	Nut-Lock Ni
3296-29	7	10	2	Nut-Lock Ni
3296-29	7	19	1	Nut-Lock Ni
3296-29	7	26	2	Nut-Lock Ni
3296-29	7	27	1	Nut-Lock Ni
3296-29	8	3	4	Nut-Lock Ni
3296-29	9	1	4	Nut-Lock Ni
3296-29	9	17	2	Nut-Lock Ni
3296-29	10	20	1	Nut-Lock Ni
3296-29	12	25	2	Nut-Lock Ni
3296-29	13	15	2	Nut-Lock Ni
3296-29	14	14	8	Nut-Lock Ni
3296-29	13	24	2	Nut-Lock Ni (Only On: 71198)
3296-29	11	45	6	Nut-Lock Ni (Only On: 71220)
3296-39	4	15	3	Nut-Lock Ni
3296-39	8	18	1	Nut-Lock Ni
3296-39	10	22	3	Nut-Lock Ni
3296-39	12	24	1	Nut-Lock Ni
3296-39	13	3	2	Nut-Lock Ni
3296-39	11	43	2	Nut-Lock Ni (Only On: 71220)
3296-42	2	4	4	Nut-Lock Ni
3296-42	5	9	2	Nut-Lock Ni
3296-42	10	10	2	Nut-Lock Ni
3296-42	12	4	2	Nut-Lock Ni
3296-42	13	11	2	Nut-Lock Ni
3296-58	12	14	3	Nut-Lock Ni
3296-59	7	28	2	Nut-Lock Ni
32103-22	15	28	2	Nut-Wing
32104-76	6	44	2	Screw-Acorn Slot
32104-76	13	1	5	Screw-Acorn Slot
32111-7	11	39	2	Nut-Cap
32120-64	9	2	1	Ring-External Snap
32121-111	5	2	1	Pin-Roll
32128-43	2	22	2	Nut-Lock Whiz
32144-14	9	22	2	Screw-HWH
32144-32	15	10	2	Screw
32144-41	10	2	8	Screw-Taptite
32144-111	10	4	8	Screw-Plask
32144-112	6	40	2	Screw-Thread Forming
32149-1	6	26	2	Nut-Keps
32149-2	15	7	3	Nut-Keps
32151-48	4	33	2	E-Ring
32151-48	5	18	1	E-Ring
32151-48	9	13	2	E-Ring

*Not Illustrated

