



1/3 Area Pressure Washer

For Workman 3000 Series

Model No. 07346 – 200000001 and Up

Parts Catalog

Ordering Replacement Parts

To order replacement parts, please supply: the part number, the quantity, and the description of each part desired.

Understanding Reference Numbers

Each identified part in an illustration has a reference number. The reference number for a part also appears in the parts list, along with other information about the part.

This catalog uses two special reference number formats, one to indicate parts in a service assembly and another to indicate the quantity of a given part in an illustration.

Service Assembly Reference Numbers

Parts in service assemblies have reference numbers in the form **a:b**. The **a** represents the reference number of the entire service assembly and the **b** represents a sequential number unique to each part within the service assembly.

For example, a wheel assembly might be identified by reference number **6**, the tire by **6:1**, the valve by **6:2**, and the wheel by **6:3**. When you order the assembly identified by reference number **6**, you receive all parts identified by reference numbers **6:1**, **6:2**, and **6:3**. However, you may also order any part individually.

Reference numbers of this type appear in illustrations and in part lists.

Reference Numbers Indicating Quantity

In an illustration, if a reference number indicates more than one part, the reference number has the form **nX y**. The **n** represents the quantity of the part, the **X** is the multiplication symbol, and the **y** represents the reference number.

For example, in an illustration, the reference number **2X 37** means that two of the parts identified by reference number **37** are indicated.

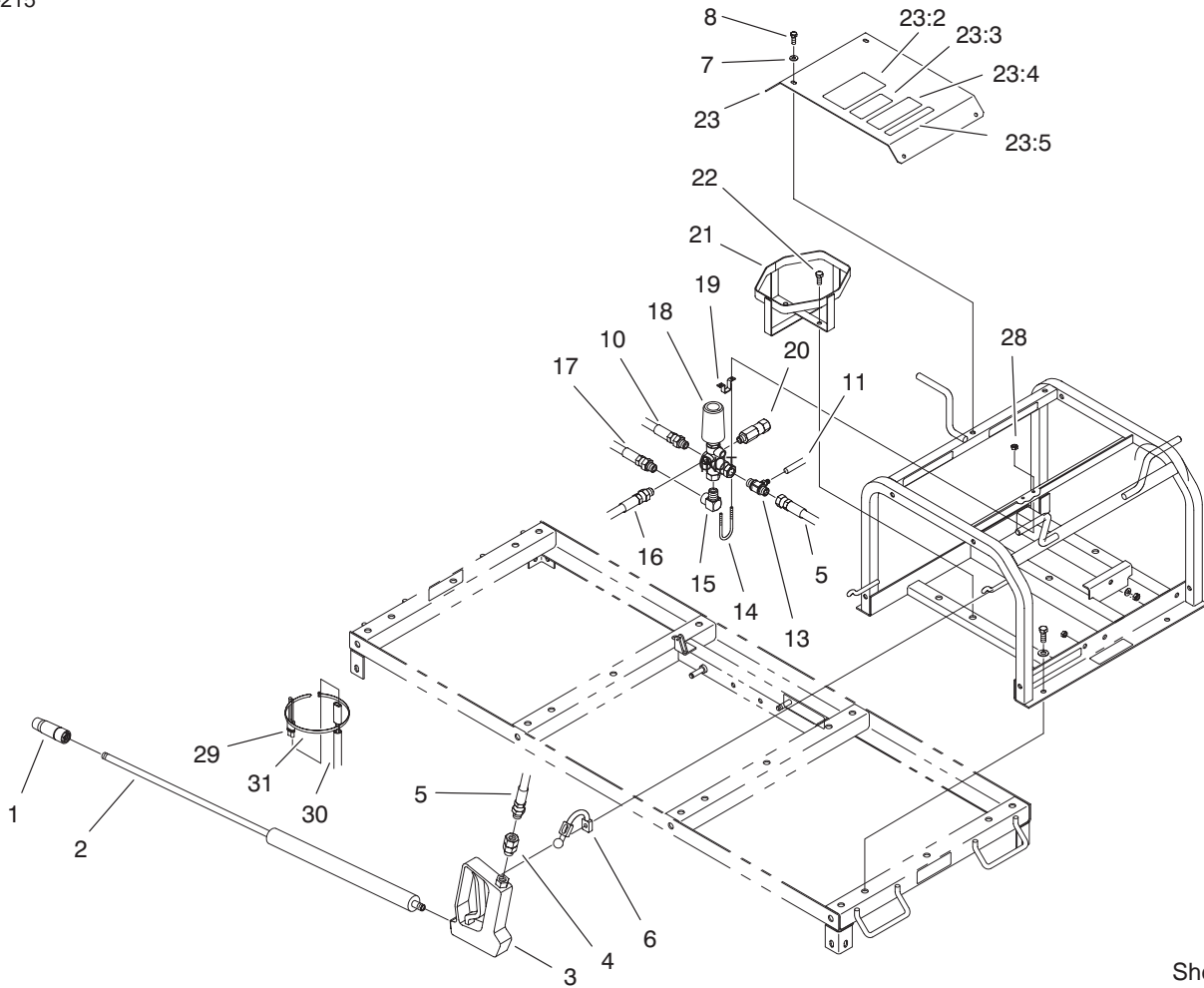
Contents

Description	Page	Description	Page
Water Tank Assembly	3	Pump Drive Assembly	6
High Pressure Lance and Frame Assembly	4	Electrical Schematic	7
Control Panel Assembly	5	Water System Schematic	8

Part Description Abbreviations

Part descriptions in this catalog may include the following abbreviations.

Abbreviation	Meaning	Abbreviation	Meaning
AR	as required	INC	incorporated
ASM	assembly	LH	left hand
CARR	carriage	NI	nylon insert
DEG	degrees	PPH	Phillips pan head
FH	flat head	PTH	Phillips truss head
GA	gauge	PTO	power take off
HF	hex flange	RH	right hand
HH	hex head	SFH	slotted fillister head
HHF	hex head flange	SHH	slotted hex head
HLH	hex lag head	SQH	square head
HJ	hex jam	SHWH	slotted hex washer head
HOC	height-of-cut	SPH	slotted pan head
HS	hex socket	SRH	slotted round head
HSBH	hex socket button head	STD	standard
HSFH	hex socket flat head	TAP	self tapping
HSH	hex socket head	TTH	Torx truss head
HWH	hex washer head	WH	wing head
HWHTF	hex washer head thread forming		

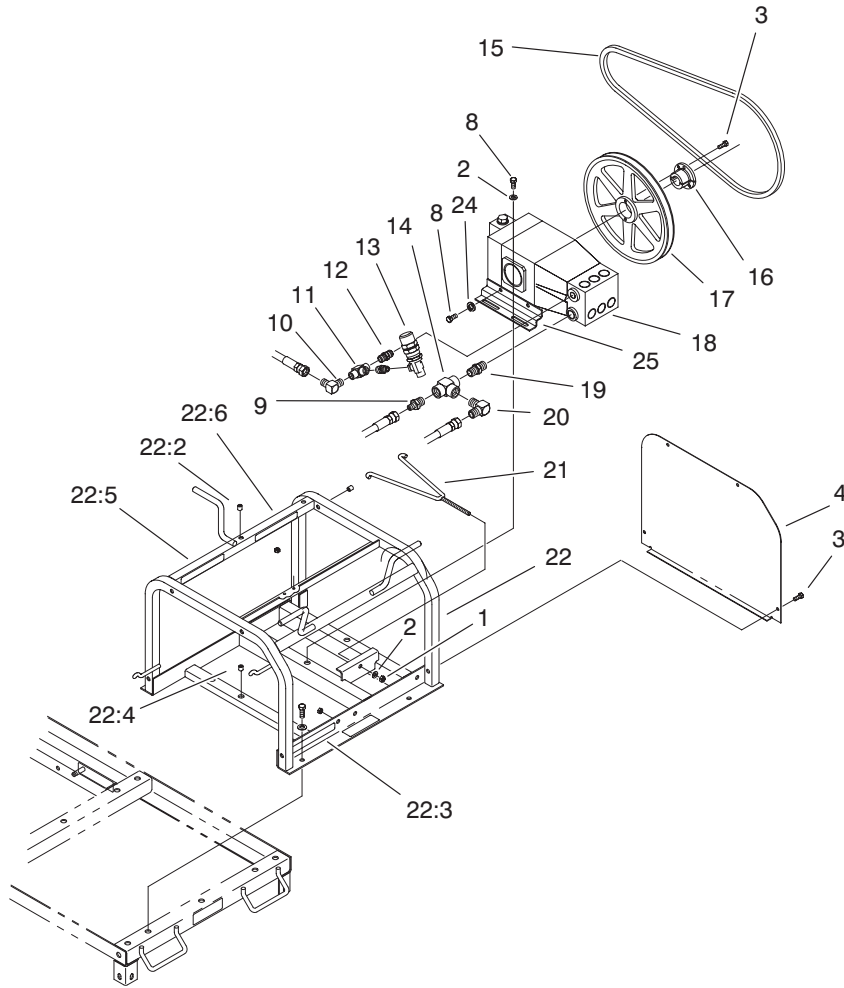


Sheet No.:3

High Pressure Lance and Frame Assembly

Ref. No.	Part No.	Qty.	Description
1	93-1317	1	Nozzle
2	93-1316	1	Lance
3	93-1315	1	Gun - Pressure
4	93-1336	1	Fitting - Swivel
5	93-1326	1	Hose-Pressure, High
6	42198	2	Hold-Down-Rubber
7	3256-22	4	Washer-Flat
8	321-4	4	Screw-HH
10	93-1335	1	Hose ASM
11	93-1337	1	Hose
13	93-1320	1	Injector-Chemical
14	93-3135	1	U-Bolt
15	93-1340	1	Fitting - Pipe
16	93-1331	1	Hose - Bypass
17	93-1332	1	Hose ASM
18	93-1318	1	Valve-Unloader
19	93-3136	1	Bracket-Clamp
20	93-1325	1	Valve-Relief, Thermal
21	93-3120	1	Holder-Chemical
22	322-3	2	Screw-HH
23	92-2810	1	Top Shield ASM-Service
23:2	93-1310	1	Decal-Danger
23:3	93-1311	1	Decal-Warning
23:4	80-8040	1	Warning-Member, Rotating

Ref. No.	Part No.	Qty.	Description
23:5	65-3090	1	Decal - Instruction
28	32146-18	2	Nut-Lock
29	92-9027	1	Wire Harness
30	93-3133	1	Wire Harness
31	3290-379	3	Tie-Cable

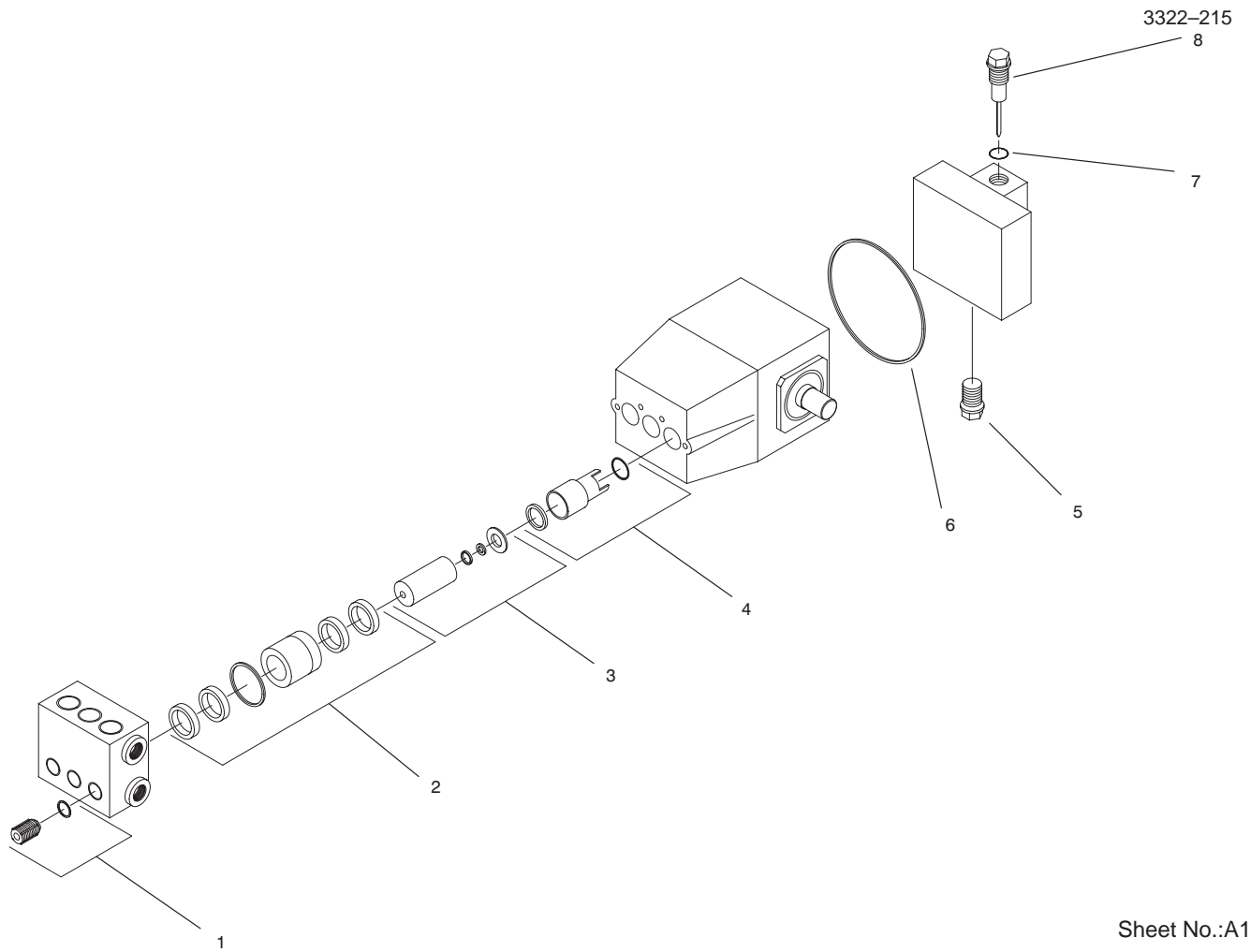


Sheet No.:5

Pump Drive Assembly

Ref. No.	Part No.	Qty.	Description
1	3296-29	1	Nut-Lock,NI
2	3256-23	5	Washer-Flat
3	321-4	6	Screw-HH
4	93-1308	1	Shield - Belt
8	322-3	8	Screw-HH
9	93-1346	1	Coupling-Pipe, Male
10	93-1343	1	Elbow-Male Pipe, 90 DEG
11	93-1349	1	Tee-Pipe, Female
12	93-1348	2	Coupling-Pipe, Male
13	94-5505	1	Valve - Relief
14	92-2802	1	Tee-Female
15	93-1304	1	V-Belt
16	99-9422	1	Bushing-Lock, Taper
17	93-1302	1	Pulley
18	100-4500	1	Pump-Washer, Pressure
19	93-1345	1	Coupling-Pipe, Male
20	93-1341	1	Elbow-Male Pipe, 90 DEG
21	93-1305	1	Tension
22	92-2809	1	Frame ASM- Service
22:2	32148-6	10	Nut-Insert
22:3	92-2826	1	Decal-Important
22:4	32148-7	6	Nut-Insert
22:5	92-2819	1	Decal-Important

Ref. No.	Part No.	Qty.	Description
22:6	85-8880	1	Decal-Missing, Shield
24	3253-4	4	Washer-Lock/Sp
25	99-9420	2	Bracket-Pump



Sheet No.:A1

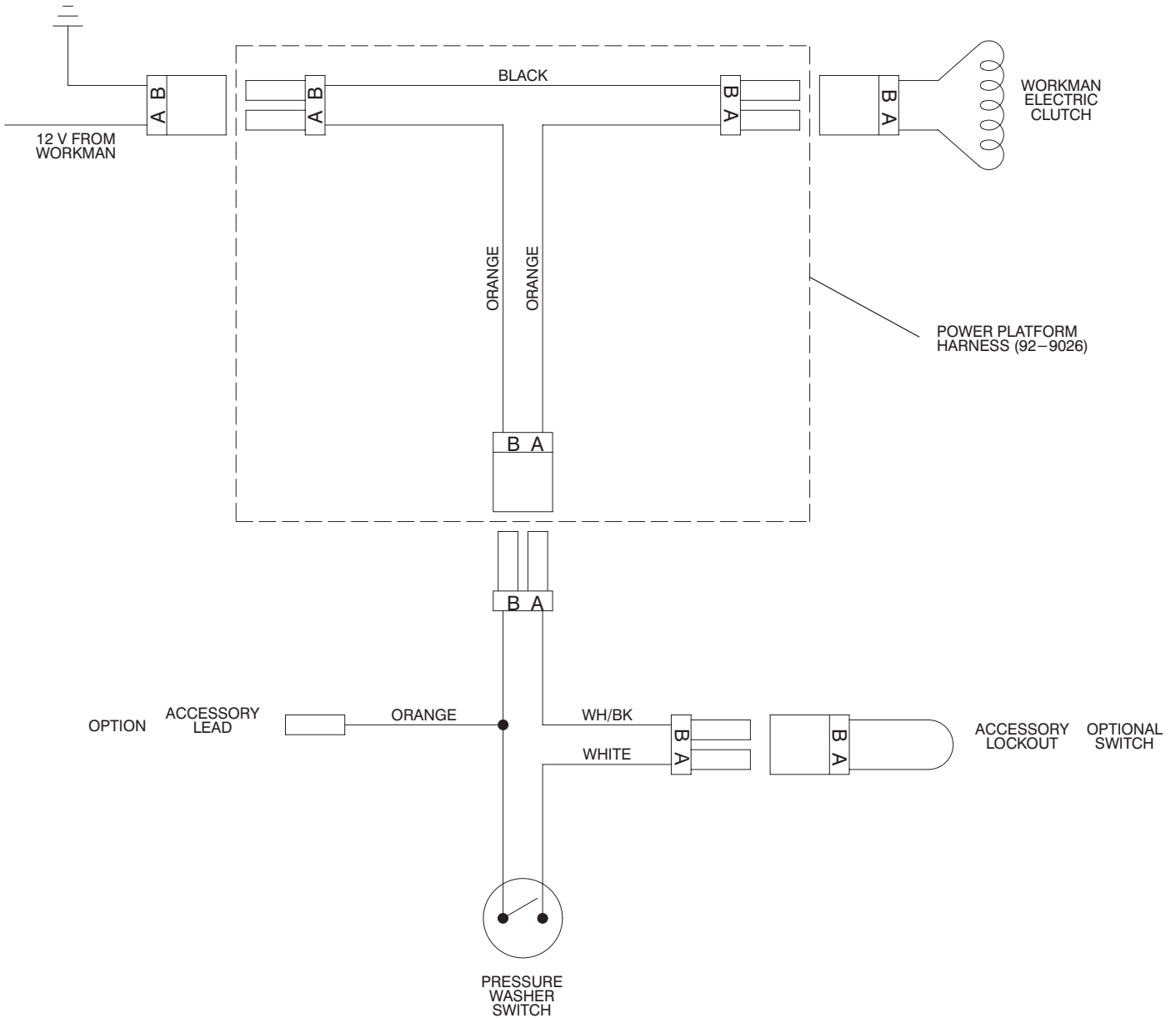
Pressure Washer Pump Assembly No. 100-4500

Ref. No.	Part No.	Qty.	Description
1	100-4531	1	Kit-Valve
2	100-4532	1	Kit-Plunger Seal, Loaded
3	100-4533	3	Kit-Plunger
4	100-4534	1	Kit-Oil Seal Repair
5	100-4535	1	Plug-Drain
6	100-4536	1	O-Ring
7	100-4537	1	O-Ring
8	100-4538	1	Dipstick

Ref. No.	Part No.	Qty.	Description

Electrical Schematic

WIRING DIAGRAM (SCHEMATIC INCLUDING POWER PLATFORM)



Water System Schematic

WATER SYSTEM SCHEMATIC

