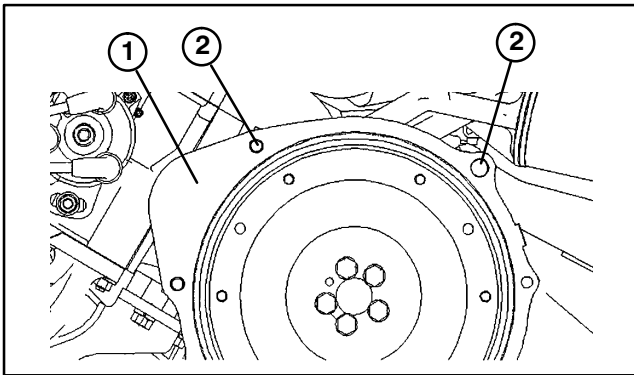




PART NO. 99-1214

**INSTALLATION
INSTRUCTIONS**
**ENGINE COVER KIT
WORKMAN 3200**

1. Raise bed and install safety support on fully extended lift cylinder rod (if so equipped).
2. Stop engine, set parking brake and remove key from ignition switch.
3. Loosen (2) capscrews securing top of clutch housing to rear of engine (Fig. 1).

**Figure 1**

1. Clutch housing
2. Mounting capscrews

4. Insert rear braces, between washers and clutch housing, on capscrews as shown in figure 2. Do not tighten capscrews at this time.

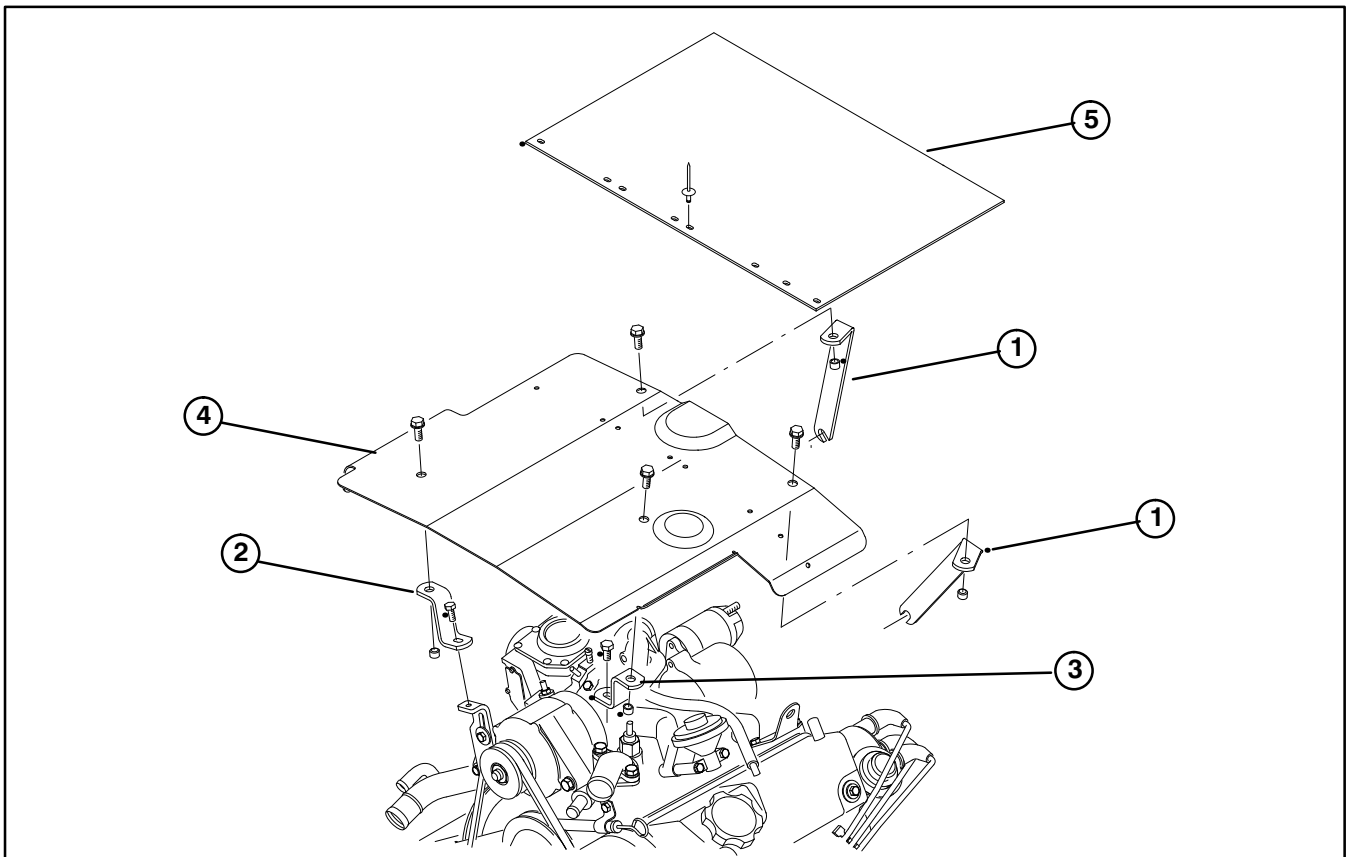
5. Loosely secure slotted end of R.H. front brace (longer brace) to alternator bracket with a M6 – 1.00 x 16 mm lg. capscrew. Position bracket as shown in figure 2.

6. Loosely secure slotted end of L.H. front brace (shorter brace) to boss on engine manifold with a M8 – 1.25 x 16 mm lg. capscrew. Position bracket as shown in figure 2.

7. Position engine cover onto braces aligning mounting holes (Fig. 2).

8. Secure cover to braces with (4) 5/16-18 x 3/4" lg. capscrews. Tighten all screws.

9. Secure rubber engine cover to top of engine cover with (8) rivets, positioning as shown in figure 2.

**Figure 2**

1. Rear brace
2. R.H. front brace
3. L.H. front brace
4. Engine cover
5. Rubber engine cover