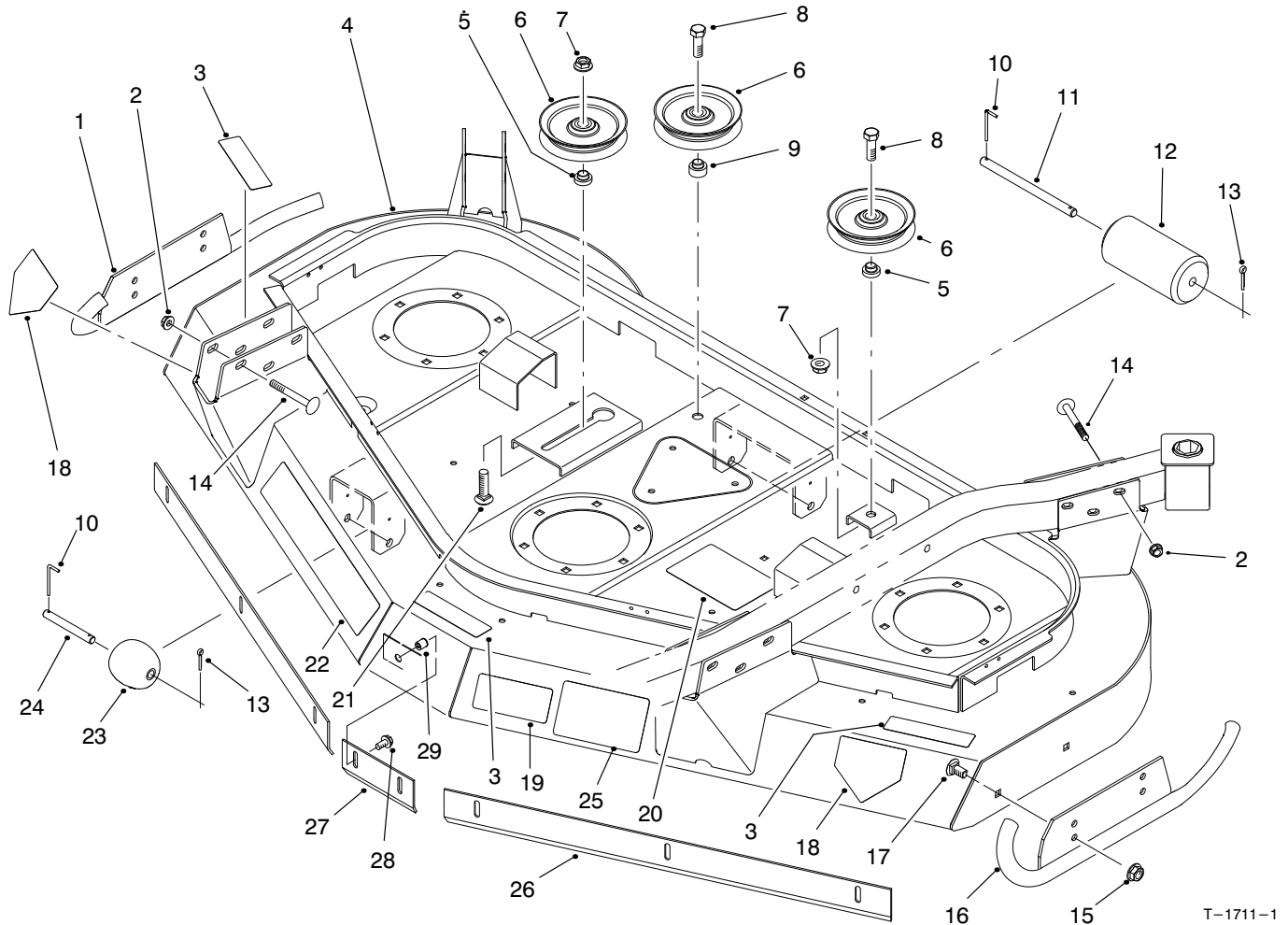


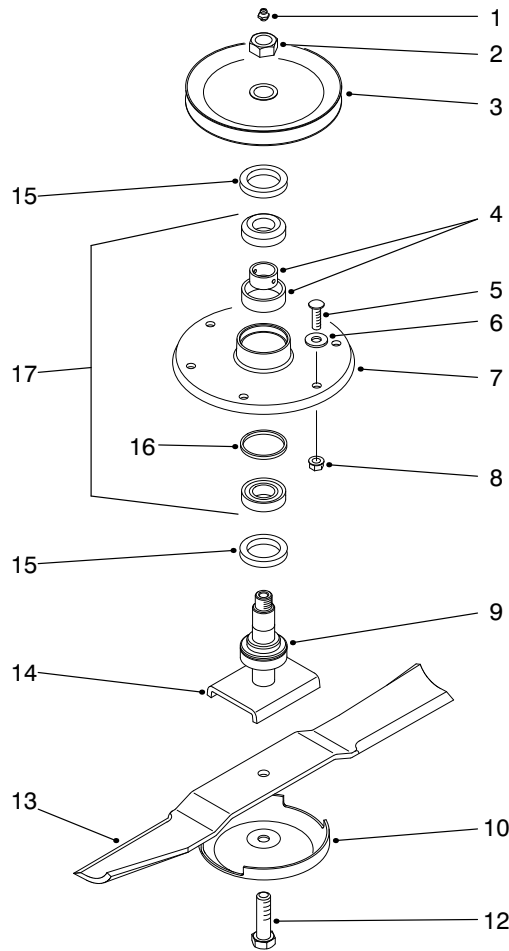

MODEL NO. 30569-90500 & UP
MODEL NO. 30569TE-90500 & UP
PARTS
CATALOG
GUARDIAN® 62" RECYCLER®
CUTTING UNIT


T-1711-1

HOUSING & IDLERS ASSEMBLY

Ref. No.	Part No.	Description	No. Used
1	92-5592-01	Skid - RH	1
2	32128-19	Nut - Flange Lock	12
3	85-6410	Decal - Danger	3
3	93-7814	Decal - Warning (Europe)	3
4	92-5571	Asm. - 62" Deck (Incl. Ref. #3, 18-20, 22 & 25)	1
5	69-6960	Spacer - Idler	2
6	63-1540-03	Pulley - Idler	3
7	3296-25	Nut - Flange Lock	2
8	325-6	Screw - HH	2
9	69-6970	Spacer - Idler	1
10	57-0690	Pin - Special	3
11	40-6400	Shaft - Roller	1
12	36-1740	Roller - Deck	1
13	3272-11	Pin - Cotter	3
14	3231-10	Bolt - Carriage	12
15	32128-21	Nut - Flange Lock	4

Ref. No.	Part No.	Description	No. Used
16	92-5589-01	Skid - LH	1
17	3231-1	Bolt - Carriage	4
18	43-8480	Decal - Danger	2
18	93-7815	Decal - Danger (Europe)	2
19	68-8340	Decal - Torque	1
19	93-7818	Decal - Torque (Europe)	1
20	92-4092	Decal - Belt Routing	1
21	3233-30	Bolt - Carriage	1
22	92-4088	Decal - Guardian	1
23	29-4820	Roller	2
24	57-0680	Shaft - Roller	2
25	92-5647	Decal - Warning	1
25	93-7810	Decal - Warning (Europe)	1
26	93-4388-01	Baffle - Side, (Europe)	2
27	93-4389-01	Baffle - Center (Europe)	1
28	3234-5	Screw - Flange (Europe)	8
29	32148-7	Nut - Clinch (Europe)	8



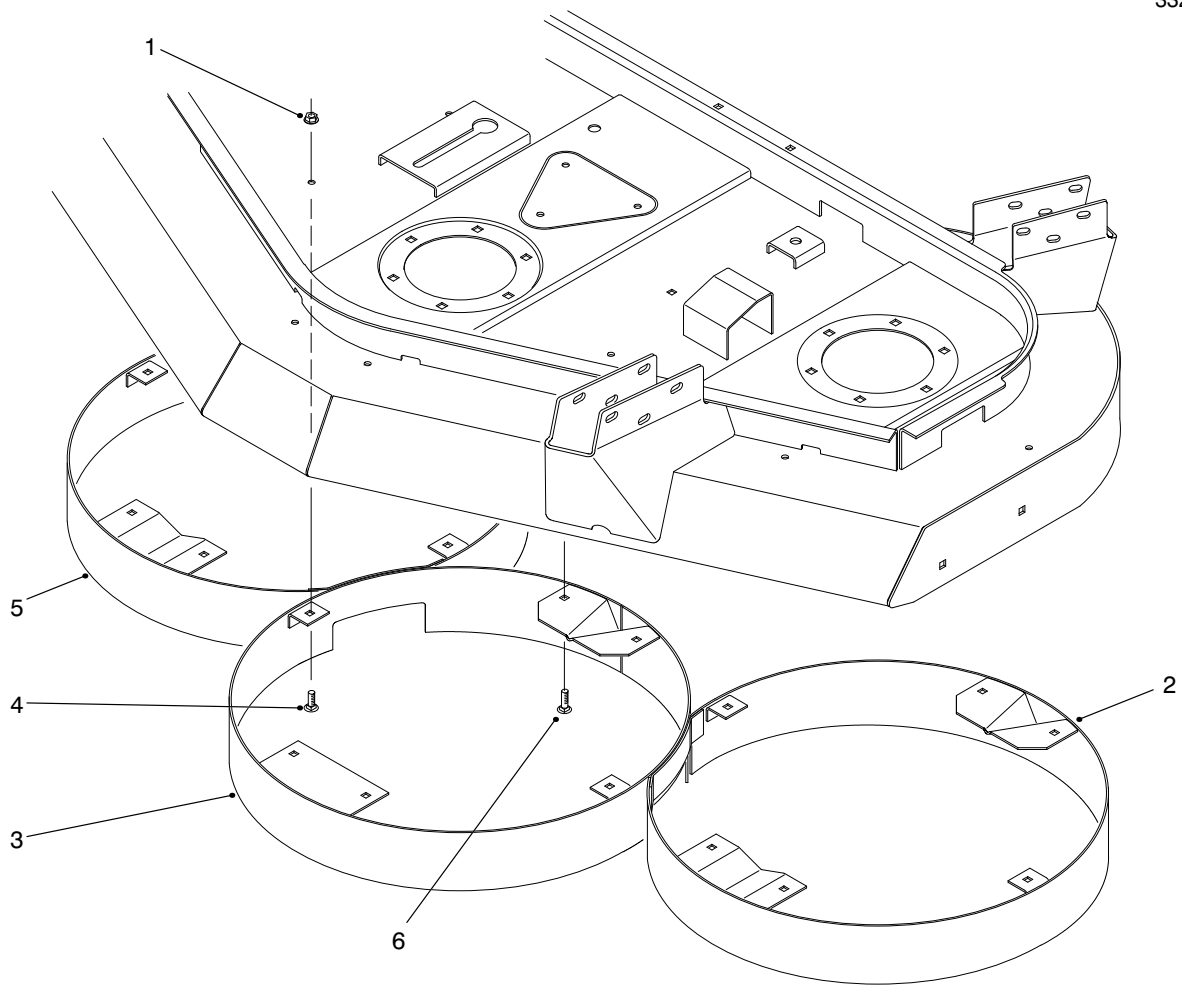
T-1709

SPINDLE ASSEMBLY

Ref. No.	Part No.	Description	No. Used
1	302-2	Fitting - Grease	3
2	32146-20	Nut - Lock	3
3	92-5607-03	Pulley	3
4	27-5970	Spacer Set	3
5	3231-27	Bolt - Carriage	18
6	3256-24	Washer - Flat	A/R
7	61-4160	Housing - Spindle	3
8	32128-21	Nut - Lock	18
9	92-5606	Spacer - Spindle	3
10	72-9361	Cup - Anti-Scalp	3
12	92-5816	Bolt - Blade	3

Ref. No.	Part No.	Description	No. Used
13	92-5608	Blade	3
14	92-5604	Spindle	3
15	253-139	Seal - Oil	6
16		Spacer	3
17	27-0960	Asm. - Bearing (Incl. Ref. #16)	3
*	95-3073	Kit - Blade & Belt (Incl Ref. #13)	1
*	95-3081	Spindle Assembly (Incl. Ref. #1-12 & 14-17)	1

*Not Illustrated

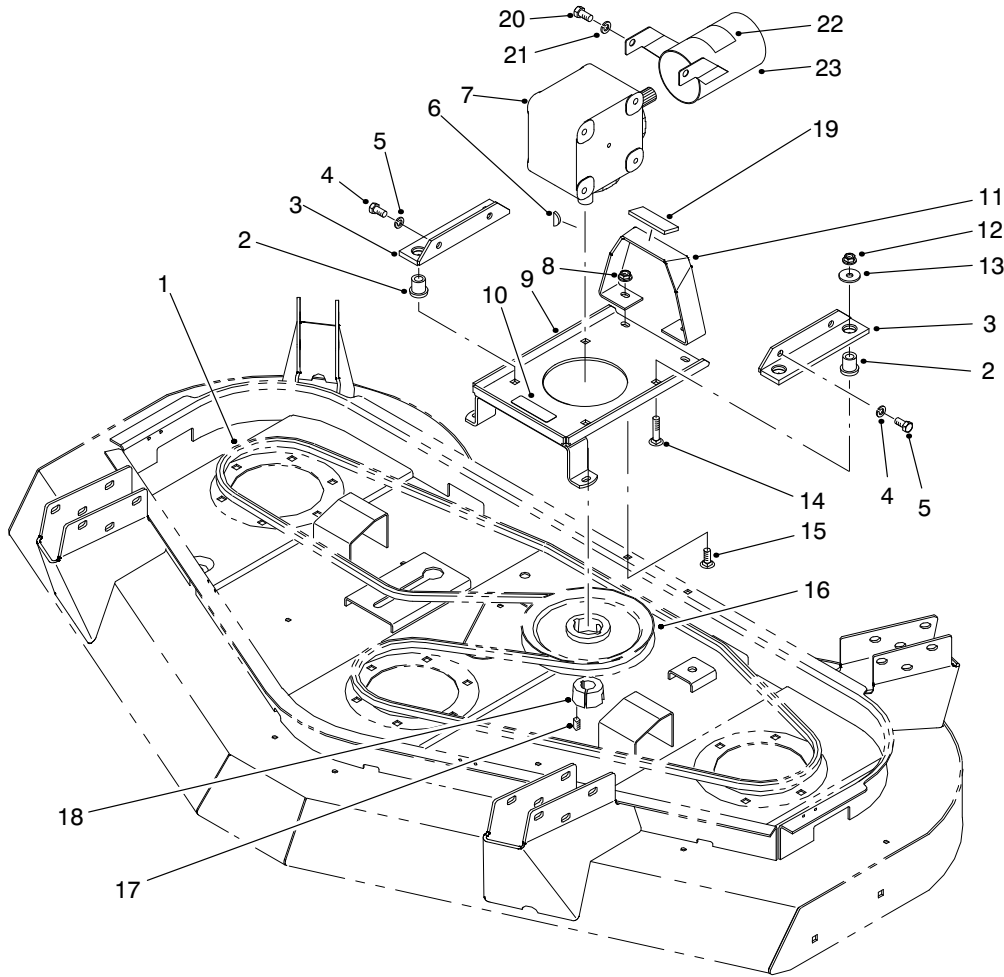


T-1708A

CUTTING CHAMBER INSTALLATION ASSEMBLY

Ref. No.	Part No.	Description	No. Used
1	32128-13	Nut - Flange Lock	18
2	92-5594-01	Chamber - Cutting LH	1
3	92-5600-01	Chamber - Cutting Center	1

Ref. No.	Part No.	Description	No. Used
4	3230-18	Bolt - Carriage	14
5	92-5602-01	Chamber - Cutting RH	1
6	3230-23	Bolt - Carriage	4



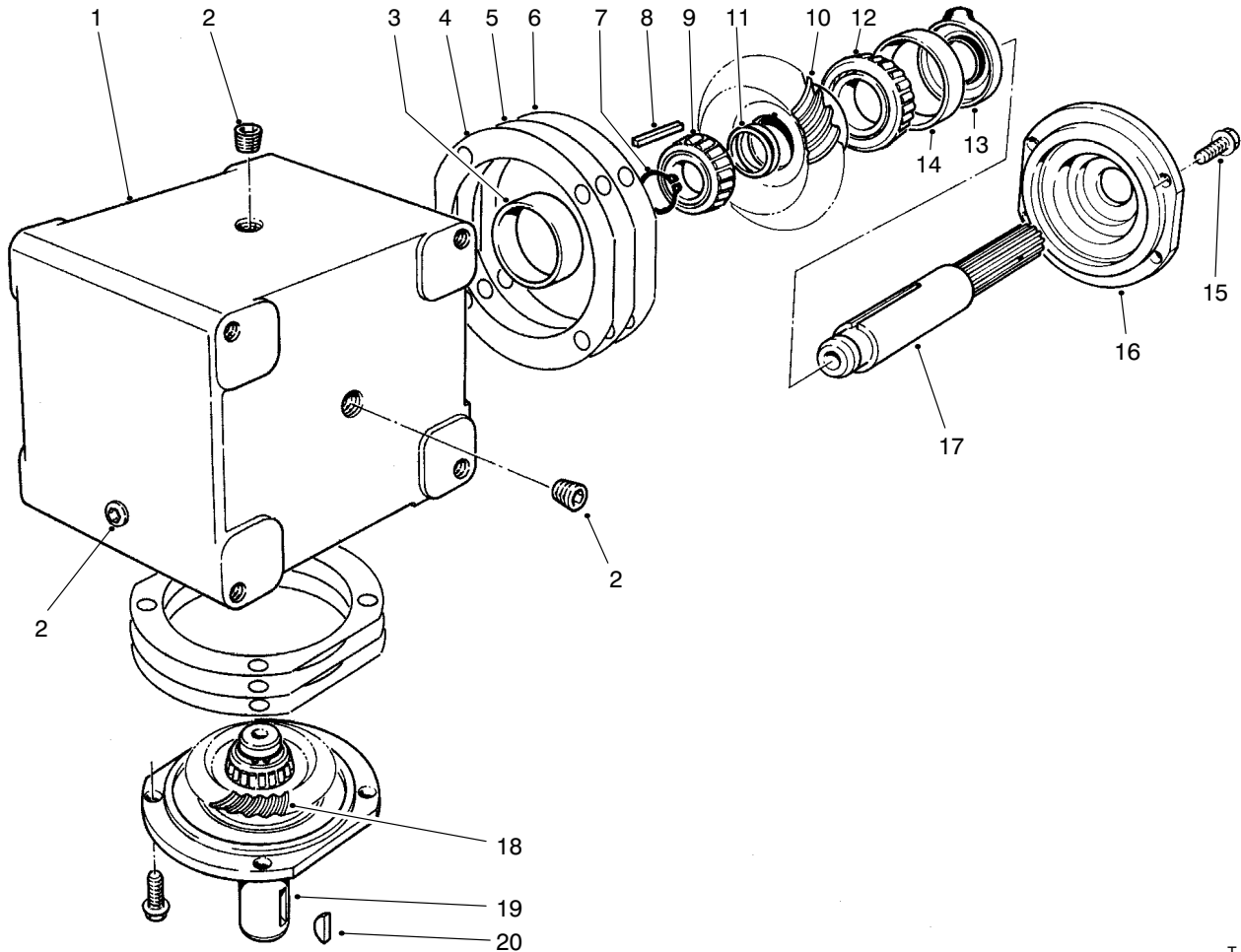
T-1710

GEAR BOX INSTALLATION ASSEMBLY

Ref. No.	Part No.	Description	No. Used
1	92-5588	Belt - V	1
2	63-9750	Mount	4
3	68-8560-03	Bracket - Gear Box	2
4	323-4	Screw - Cap Hex. Hd.	4
5	3253-21	Washer - Lock	4
6	3257-5	Key - Woodruff	1
7	68-6810	Asm. - Gear Box	1
8	32128-13	Nut - Flange Lock	4
9	92-5609	Asm. - Gear Box Plate (Incl. Ref. #10)	1
10	70-2560	Decal - Lube	1
10	93-6697	Decal - Lube (Europe)	1
11	92-5644	Asm. - Gear Box Stand (Incl. Ref. #19)	1
12	32128-21	Nut - Lock	4

Ref. No.	Part No.	Description	No. Used
13	63-8410	Washer	4
14	3231-26	Bolt - Carriage	4
15	3230-22	Bolt - Carriage	4
16	85-5860	Pulley - Gear Box	1
17	3247-4	Screw - Set	2
18	23-1640	Asm. - Taper Lock Bushing (Incl. Ref. #17)	1
19	74-0342	Cushion - Rubber	1
20	323-2	Screw - HH (Europe)	2
21	3253-21	Washer - Lock (Europe)	2
22	93-7283	Decal - Danger (Europe)	1
23	99-8408	Guard - PTO Shaft (Europe) (Incl. Ref. #22)	1
*	95-3073	Kit - Blade & Belt (Incl. Ref. #1)	1

*Not Illustrated

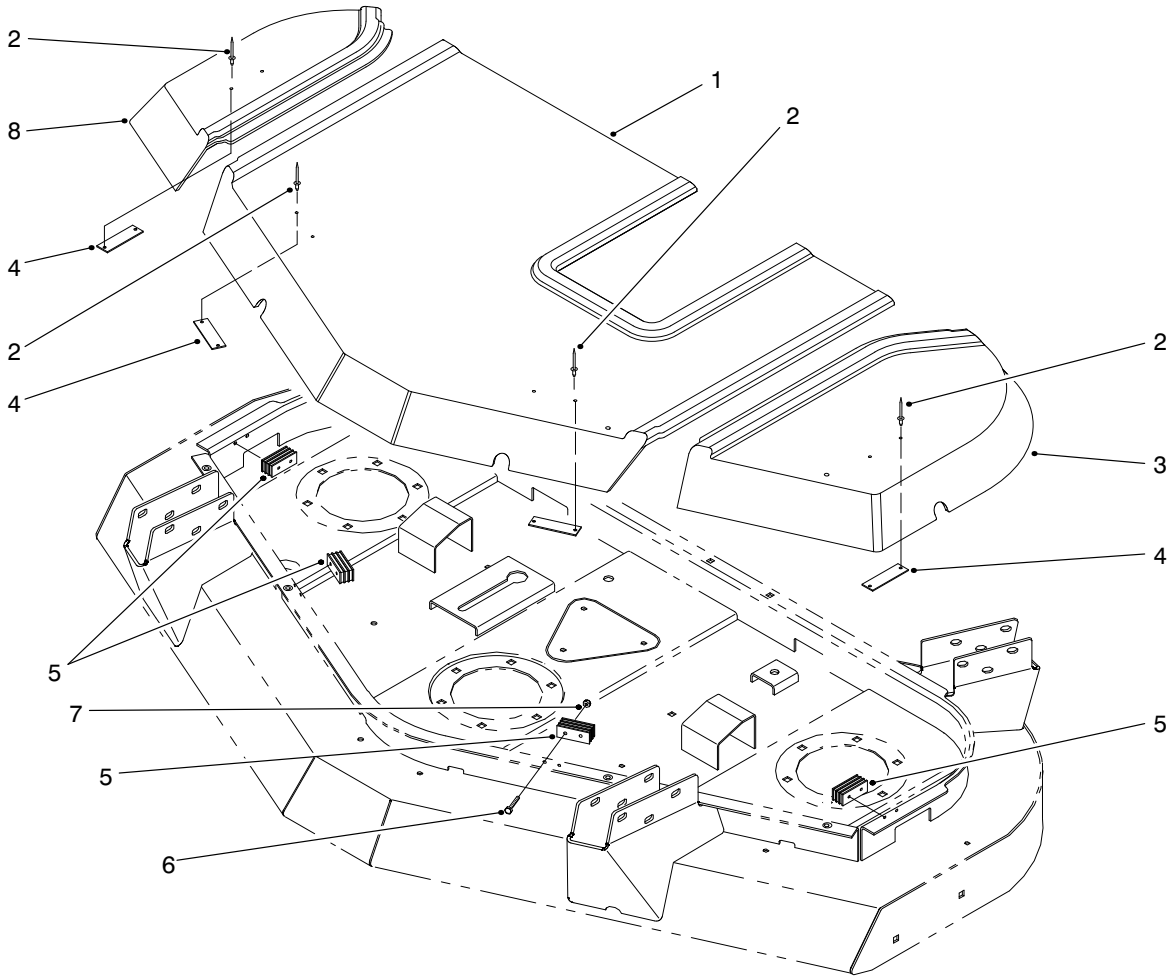


T-0977

GEAR BOX ASSEMBLY NO. 68-6810

Ref. No.	Part No.	Description	No. Used
1	68-7030	Housing	1
2	62-3490	Plug - Pipe (Solid)	4
3	62-3360	Cup - Bearing	2
4	62-3420	Gasket (.015 in.)	A/R
5	62-3430	Gasket (.005 in.)	A/R
6	62-3440	Gasket (.003 in.)	A/R
7	68-7070	Ring - Retaining	2
8	62-3380	Key	2
9	62-3370	Cone - Bearing	2
10	68-7080	Gear	1

Ref. No.	Part No.	Description	No. Used
11	72-9370	Shim (.020 in.)	2
12	62-3330	Cone - Bearing	2
13	62-3400	Seal	2
14	62-3340	Cup - Bearing	2
15	62-3310	Screw - HH	8
16	62-3410	Cap	2
17	68-7040	Shaft	1
18	68-7060	Gear	1
19	68-7050	Shaft	1
20	3257-5	Key	1

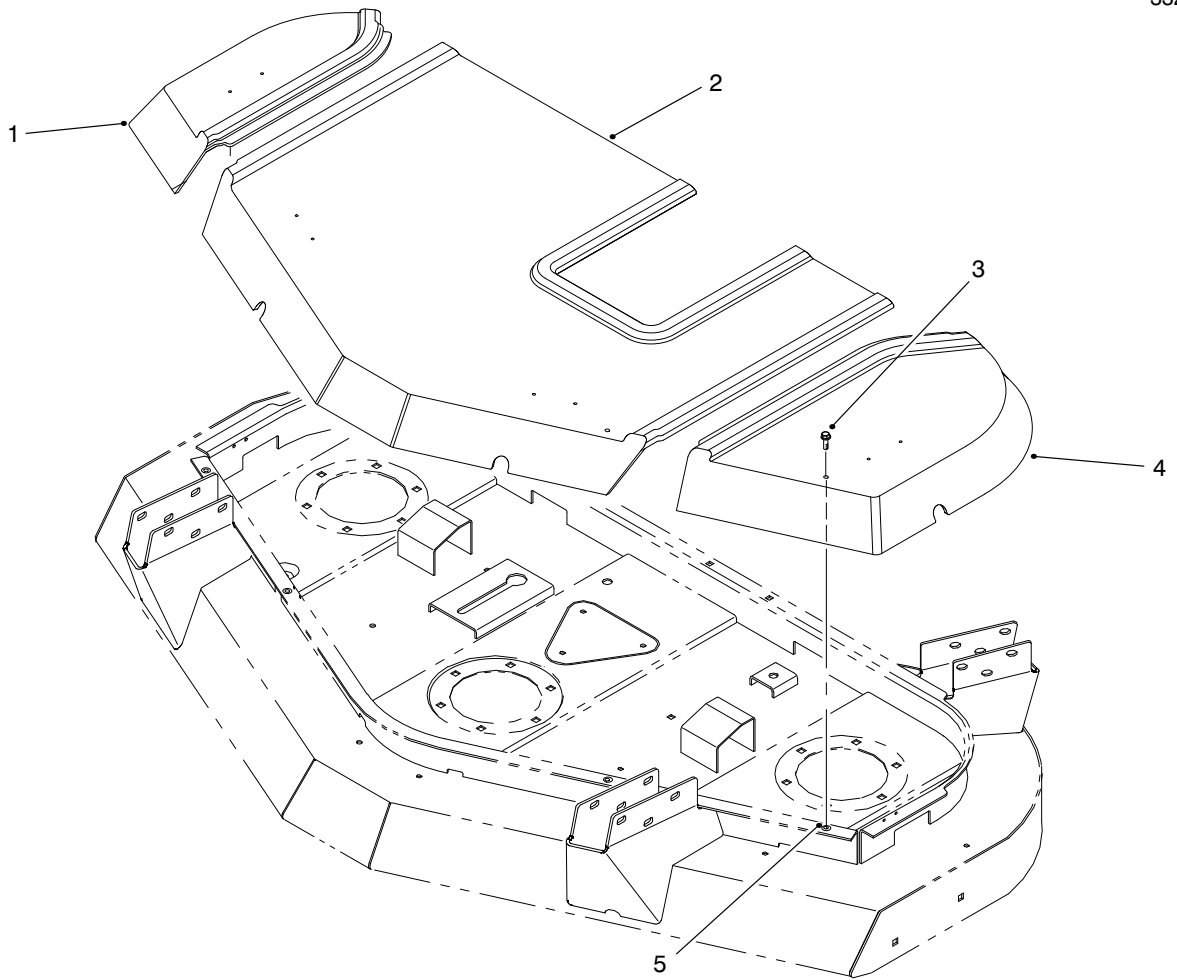


T-1713-3

COVER ASSEMBLY

Ref. No.	Part No.	Description	No. Used
1	92-5620	Cover - Center	1
2	3269-25	Rivet - Pop	8
3	92-5618	Cover - LH	1
4	69-6870	Plate - Magnet	8

Ref. No.	Part No.	Description	No. Used
5	69-6260	Magnet	4
6	32105-1	Screw - HH	8
7	3296-2	Nut - Lock	8
8	92-5619	Cover - RH	1

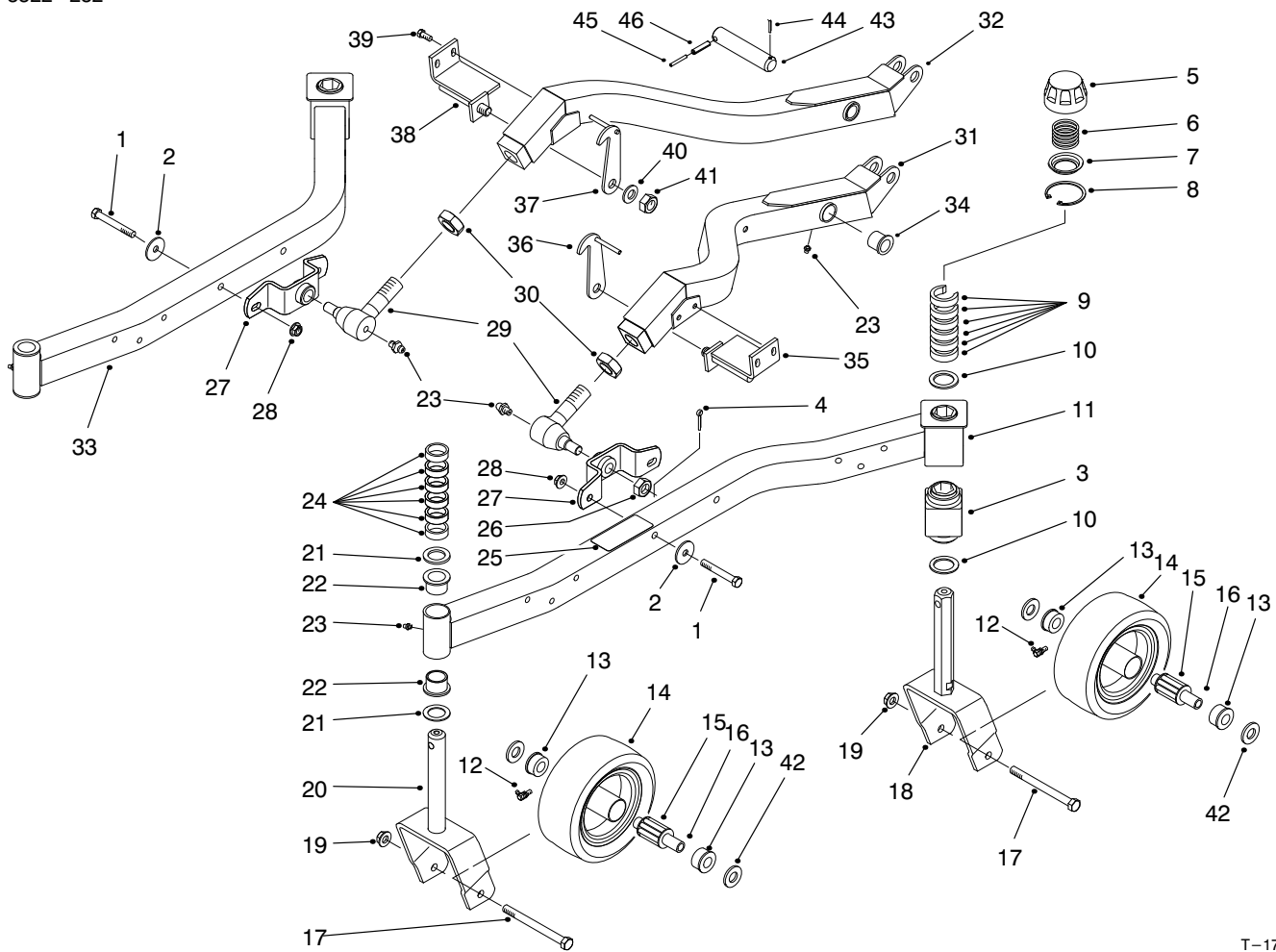


T-2679-1

COVER ASSEMBLY (EUROPE)

Ref. No.	Part No.	Description	No. Used
1	92-5619	Cover - RH	1
2	92-5620	Cover - Center	1
3	3234-5	Screw - Flange	4

Ref. No.	Part No.	Description	No. Used
4	92-5618	Cover - LH	1
5	32148-7	Nut - Clinch	4

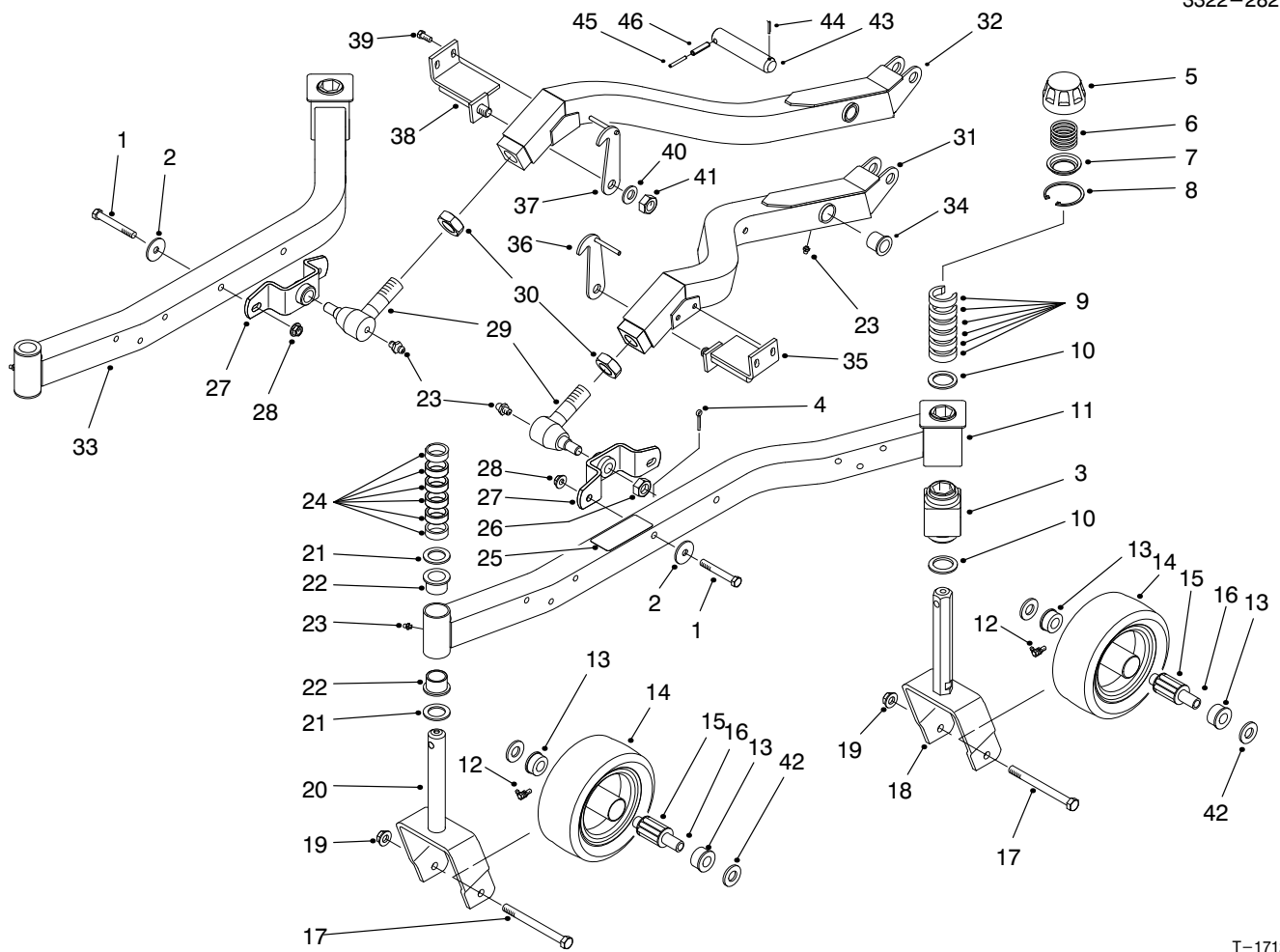


T-1712

CARRIER FRAME ASSEMBLY

Ref. No.	Part No.	Description	No. Used
1	324-12	Screw - HH	4
2	66-6480	Washer	4
3	93-8471	Bushing - Rubber	2
4	3272-12	Pin - Cotter	2
5	92-8861	Cap - H.O.C.	4
6	92-5584	Spring - Compression	4
7	92-5583	Washer - Cap	4
8	92-5581	Ring - Retaining	4
9	92-8866	Spacer	12
10	92-1765	Washer - Thrust	4
11	92-5573	Asm. - Caster Arm, LH (Incl. Ref. #3, 22, 23 & 25)	1
12	302-40	Fitting - Grease	4
13	62-5580	Bearing - Outer	8
14	85-5760	Asm. - Caster Wheel (Incl. Ref. #12, 13 & 15)	4
15	83-4740	Bearing - Roller	4
16	62-4340	Spanner	4
17	325-22	Screw - HH	4
18	92-5578-01	Fork - Caster Rear	2
19	32128-23	Nut - Flange Lock	4
20	98-7068-01	Fork - Castor Front	2
21	3-6781	Washer - Thrust	4
22	94-1291	Bushing - Flange	4
23	302-5	Fitting - Grease	6
24	63-0070	Spacer	12

Ref. No.	Part No.	Description	No. Used
25	92-4089	Decal - H.O.C.	1
25	93-7826	Decal - H.O.C. (Europe)	1
26	32136-2	Nut - Slotted	2
27	98-7944	Mount - Ball Joint	2
28	32128-42	Nut - Flange Lock	4
29	86-8100	Asm. - Ball Joint (Incl. Ref. #23 & 26)	2
30	21-3000	Nut - Jam	2
31	99-1257	Asm. - Lift Arm, LH (Incl. Ref. #23 & 34)	1
32	99-1254	Asm. - Lift Arm, RH (Incl. Ref. #23 & 34)	1
33	92-5623	Asm. - Caster Arm, RH (Incl. Ref. #3, 22 & 23)	1
34	256-268	Bushing - Flange	4
35	93-9326-01	Bracket - Latch, LH (Europe)	1
36	93-8479-03	Retainer - Deck, LH (Europe)	1
37	93-8478-01	Retainer - Deck, RH (Europe)	1
38	93-9325-01	Bracket - Latch, RH (Europe)	1
39	32144-11	Screw - HH (Europe)	4
40	3290-317	Washer - Wave (Europe)	2
41	3296-33	Nut - Lock (Europe)	2

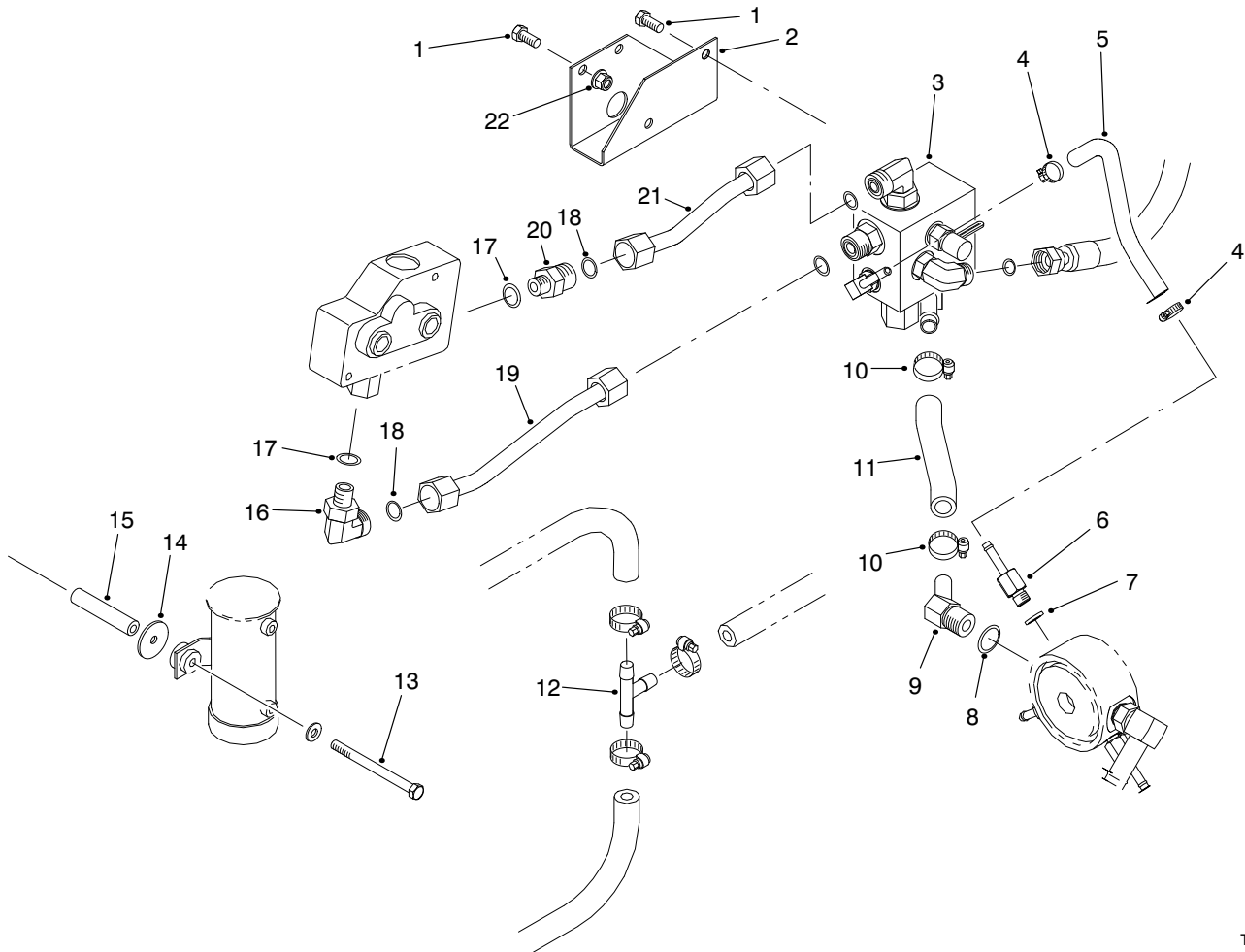


T-1712-1

CARRIER FRAME ASSEMBLY (Continued)

Ref. No.	Part No.	Description	No. Used	Ref. No.	Part No.	Description	No. Used
42	3256-6	Washer - Flat	8	*	92-8862	Asm. - Cap, H.O.C. (Incl. Ref. #5-8)	1
43	98-2330	Pivot Pin Assembly (Incl. Ref. #45 & 46)	2	*	95-3076	Castor Wheel Set (4 Wheels) (Incl. Ref. #12-17, 19 & 42)	1
44	3272-19	Pin-Cotter	2				
45	32121-61	Pin-Roll	2				
46	32121-67	Pin-Roll	2				

*Not Illustrated



T-1723

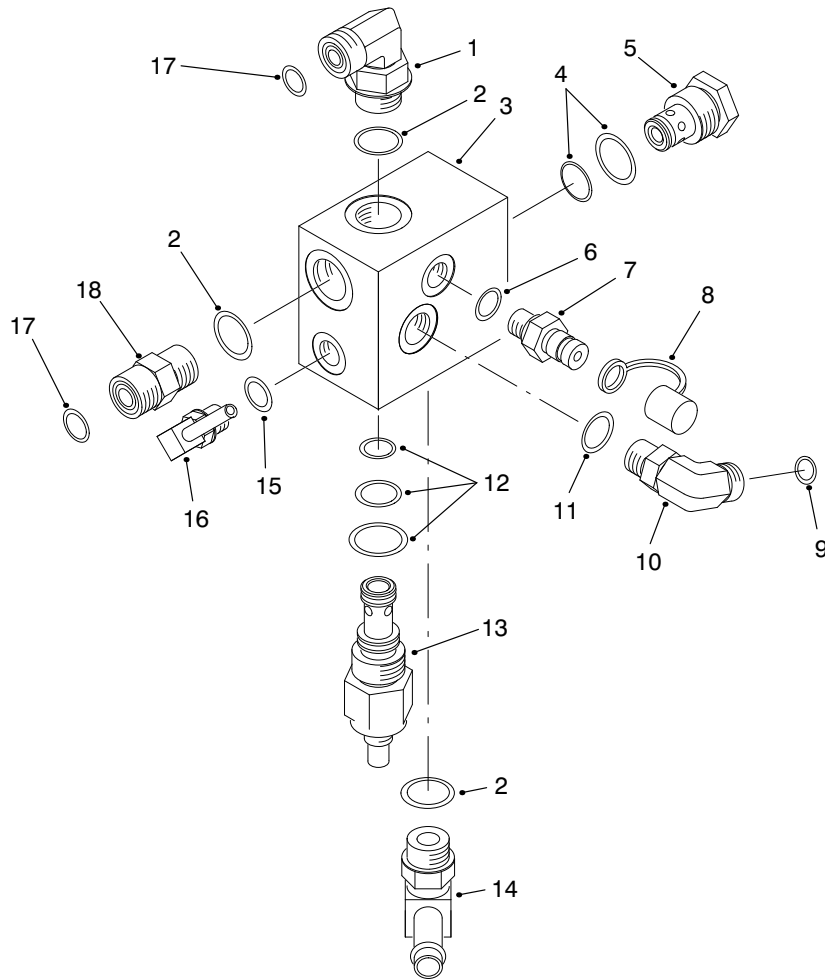
COUNTERBALANCE MANIFOLD INSTALLATION ASSEMBLY

Ref. No.	Part No.	Description	No. Used
1	3234-14	Screw - HH	4
2	92-5635-01	Bracket - Manifold	1
3	92-5638	Asm. - Manifold Block	1
4	2412-108	Clamp - Hose	2
5	65-2970	Hose - Hydraulic	1
6	92-5512	Fitting - Hydraulic Straight (Incl. Ref. #7)	1
7	237-78	O-Ring	1
8	237-79	O-Ring	1
9	354-126	Fitting - Hydraulic 90° (Incl. Ref. #8)	1
10	2412-36	Clamp - Hose	2
11	92-5639	Hose - Hydraulic	1
12	354-107	Fitting - Hydraulic Tee	1
13	321-24	Screw - HH	2

Ref. No.	Part No.	Description	No. Used
14	3256-55	Washer - Flat	2
15	92-5634	Spacer - Fuel Pump	2
16	340-99	Fitting - Hydraulic 90° (Incl. Ref. #17 & 18)	1
17	237-42	O-Ring	2
18	237-30	O-Ring	2
19	92-5637	Tube - Hydraulic	1
20	340-5	Fitting - Hydraulic Straight (Incl. Ref. #17 & 18)	1
21	92-5636	Tube - Hydraulic	1
22	32128-13	Nut - Flange Lock	2
*†	92-5640	Fitting - Hydraulic Cross (Incl. O-Ring No. 237-80) (For use on 2wd units only)	1

*Not Illustrated

†Item not included with cutting unit.



T-1722

COUNTERBALANCE MANIFOLD ASSEMBLY NO. 92-5638

Ref. No.	Part No.	Description	No. Used
1	340-98	Fitting - Hydraulic 90° (Incl. Ref. #2 & 17)	1
2	237-79	O-Ring	3
3		Block - Manifold	1
4	75-2080	Kit - Seal	1
5	92-5645	Asm. - Relief Cartridge (Incl. Ref. #4)	1
6	237-78	O-Ring	1
7	354-77	Fitting - Diagnostic (Incl. Ref. #6)	1
8	353-947	Cap - Dust	1
9	237-22	O-Ring	1
10	340-77	Fitting - Hydraulic 90° (Incl. Ref. #9 & 11)	1

Ref. No.	Part No.	Description	No. Used
11	237-42	O-Ring	1
12	69-4240	Kit - Seal	1
13	92-5646	Asm. - Logic Cartridge (Incl. Ref. #12)	1
14	354-120	Fitting - Hydraulic 90° (Incl. Ref. #2)	1
15	237-78	O-Ring	1
16	304-99	Fitting - Hydraulic 90° (Incl. Ref. #15)	1
17	237-30	O-Ring	2
18	340-4	Fitting - Hydraulic Straight (Incl. Ref. #2 & 17)	1

